

Location of transect A-A' in Greater Green River Basin (GGRB). About 90 drill holes were correlated (black and white circles). Drill holes on cross section are numbered and indicated by white circles. Area underlain by Lewis Shale shown in blue. Lewis Shale outcrops are from Green (1992) and Green and Drouillard (1994).

EXPLANATION

Lithologic and depositional interpretations

- Coarse plain, thin interbedded sandstone, siltstone, carbonaceous shale, and coal
- Upper and middle shonkites; meandering sandstone
- Offshore mudrock, includes lower shonkites sandstone and mudrock
- Deep basin siltstone; contemporarily sandstone

Contacts

- Contact—Dashed where approximate; solid where uncertain
- Contact that rises stratigraphically—Dashed where approximately; solid where uncertain
- Dashed—Asquith bed, interpreted as surface of maximum marine transgression (maximum flooding surface) of third-order cycle (Pyles, 2000)

Abbreviations

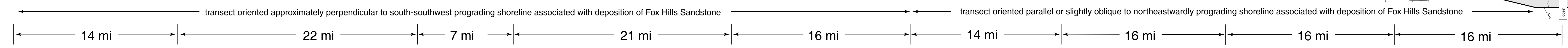
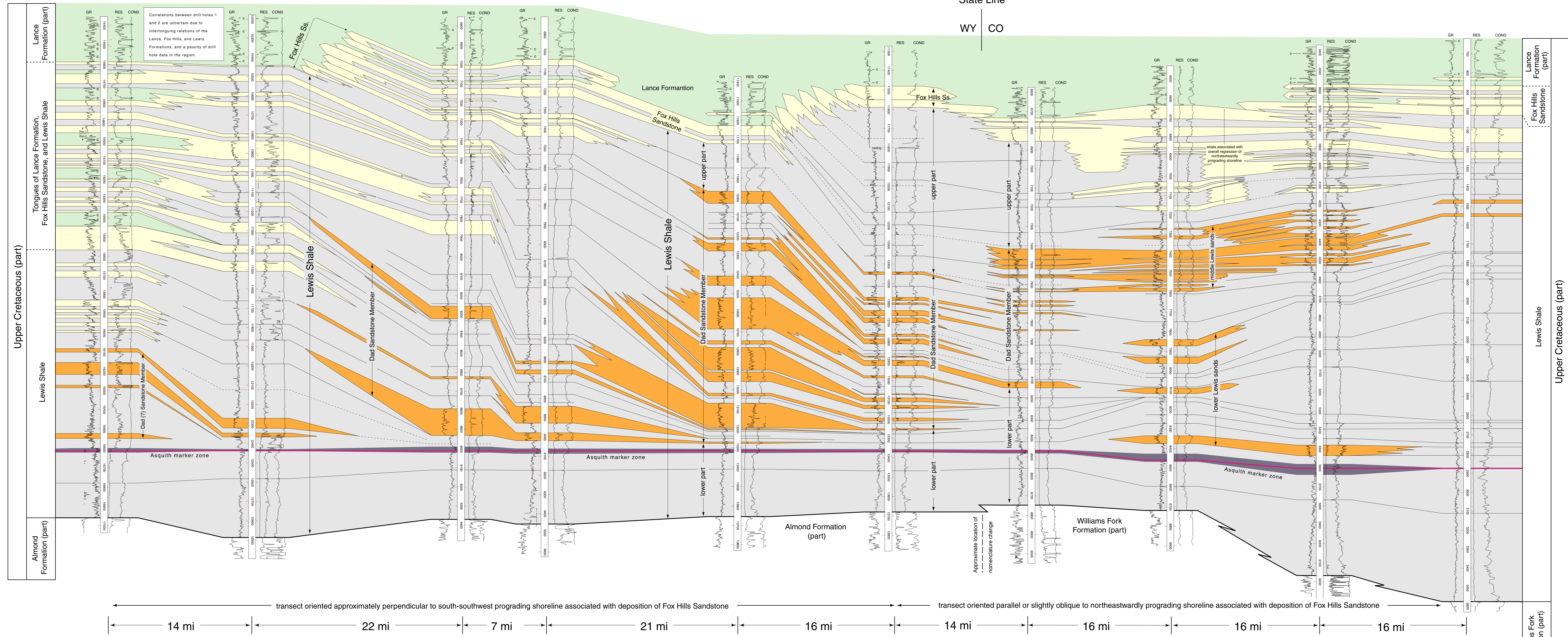
- Fm. Formation
- Mbr. Member
- Ss. Sandstone
- Sh. Shale

Scale

Distance between drill holes

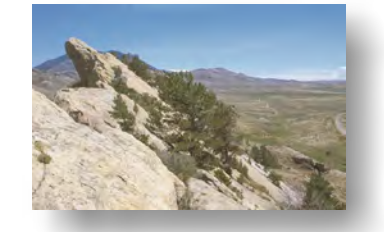
Drill-hole information

- Drill-hole locality number shown on cross section and location map
- Drill-hole name
- Location (Section, Township, Range)
- Elevation of Kelly bearing
- Geophysical logs—Gamma ray (GR) log shown to the left of depth column; resistivity (RES) and conductivity (COND) logs shown to right of depth column. Cooled in Lance Formation designated by arrow
- Depth column; down-hole depths shown in 100-ft intervals



STRATIGRAPHY OF THE UPPER CRETACEOUS LEWIS SHALE IN THE EASTERN PART OF THE GREATER GREEN RIVER BASIN, COLORADO, AND WYOMING

By Robert D. Hettinger and Laura N.R. Roberts 2005



Click here to return to Chapter 9