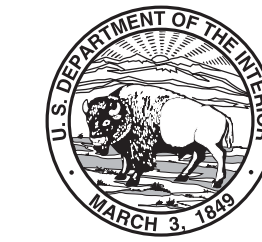
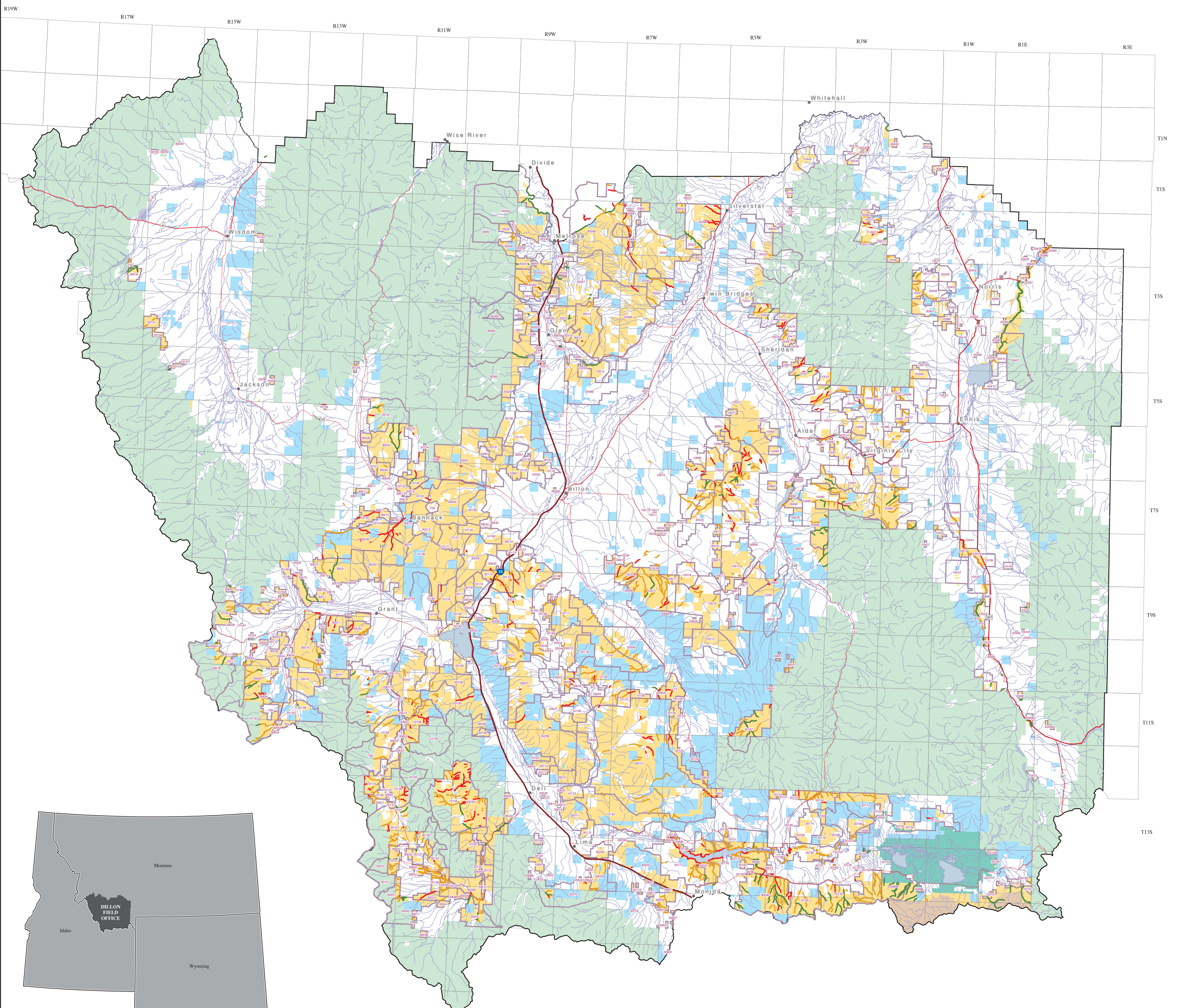


Dillon Field Office
Proposed RMP/Final EIS

Riparian Condition and Grazing Allotments



Dillon, Montana

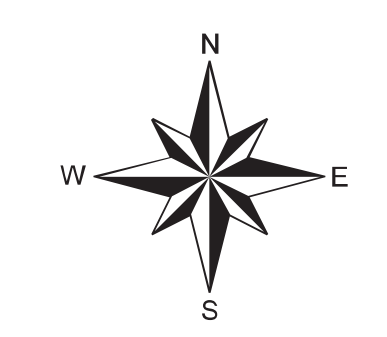


Legend

- Proper Functioning Condition
- Functional - At Risk
- Nonfunctional
- BLM Grazing Allotments and Numbers
- Dillon Field Office
- BUREAU OF LAND MANAGEMENT
- BUREAU OF RECLAMATION
- FISH AND WILDLIFE SERVICE -FWS
- FOREST SERVICE
- STATE OF MONTANA
- NATIONAL PARK SERVICE
- OTHER FEDERAL
- PRIVATE

Map shows riparian condition rating and grazing allotments. Allotment numbers correlate to the allotment list released with the Draft RMP/EIS.

This map is intended for display purposes. No warranty is made by the Bureau of Land Management as to the accuracy, reliability, or completeness of these data for individual or aggregate use with other data, or for purposes not intended by BLM. This map may not meet National Map Accuracy Standards. This product was developed through digital means and information may be updated without notification.



Albers Equal Area, North American Datum 1927

