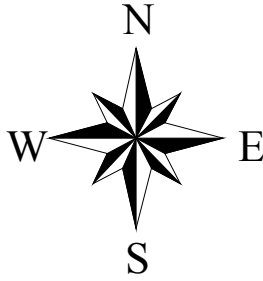


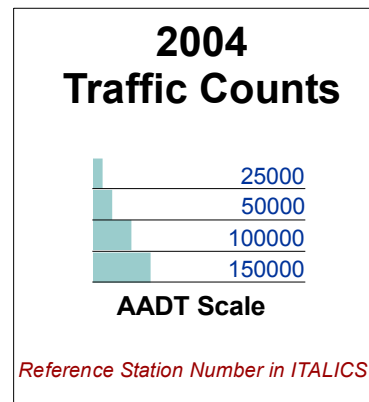
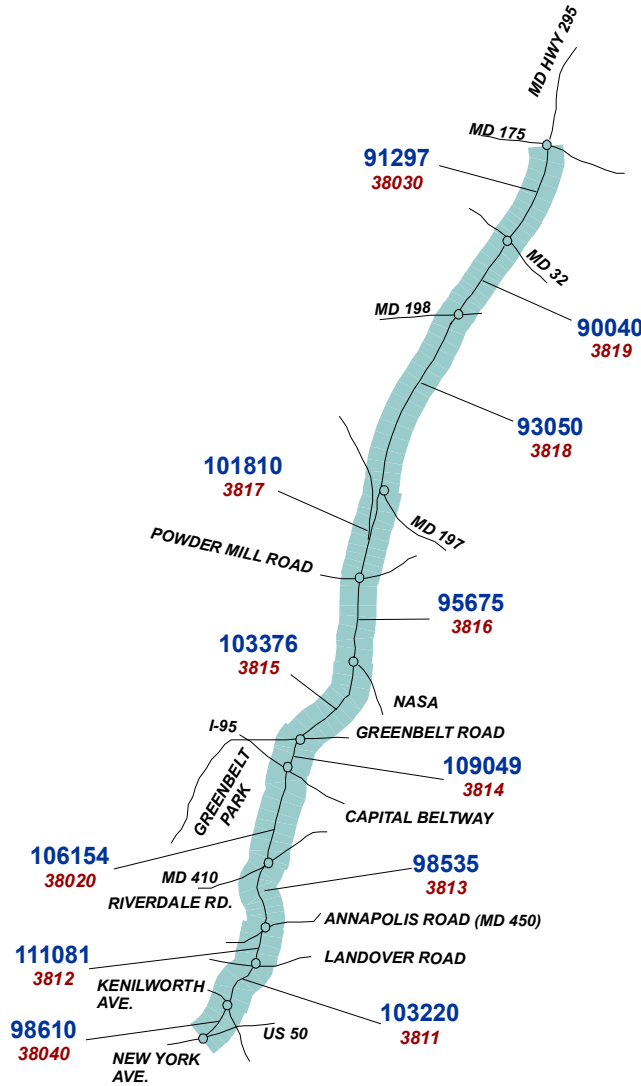
## Baltimore-Washington Memorial Parkway Traffic Package





# Baltimore Washington Memorial Parkway

Maryland  
U.S. Department of Interior  
NATIONAL PARK SERVICE



**BALTIMORE WASHINGTON MEMORIAL PARKWAY TRAFFIC TRENDS SUMMARY**

Rt. No.	Roadway Segment	Sta. ID.	Length	AADT				VMT(1000's)			
				1988	1991	1994	2004	1988	1991	1994	2004
1	B-W Parkway - Md. Hwy. 175 to Md. Hwy. 32	38030	1.25	58213	72715	61485	91297	26560	33176	28053	41654
1	B-W Parkway - Md. Hwy. 32 to Md. Hwy. 198	3819	2.55	69106	72715	61485	90040	64320	67679	57227	83805
1	B-W Parkway - Md. Hwy. 198 to Md. Hwy. 197	3818	3.2	63261	73739	56889	93050	73889	86127	66446	108682
1	B-W Parkway - Md. Hwy. 197 to Powder Mill Road	3817	2	79793	90464	70977	101810	58249	66039	51813	74321
1	B-W Parkway - Powder Mill Road to NASA Entrance	3816	2.36	76781	82042	75701	95675	66139	70671	65209	82414
1	B-W Parkway - NASA Entrance to Greenbelt Road	3815	0.94	79018	83682	73390	103376	27111	28711	25180	35468
1	B-W Parkway - Greenbelt Road to Capital Beltway	3814	0.4	87842	92068	75348	109049	12825	13442	11001	15921
1	B-W Parkway - Capital Beltway to Riverdale Road	38020	3	80763	84544	88516	106154	88435	92576	96925	116239
1	B-W Parkway - Riverdale Road to Annapolis Road	3813	1.3	86690	84544	88516	98535	41134	40116	42001	46755
1	B-W Parkway - Annapolis Road to Landover Road	3812	0.42	98669	94364	93546	111081	15126	14466	14341	17029
1	B-W Parkway - Landover Road to Kenilworth Ave.	3811	0.64	88996	92775	98333	103220	20789	21672	22971	24112
1	B-W Parkway - Kenilworth Ave. To New York Ave.	38040	0.64	82030	92775	98333	98610	19162	21672	22971	23035
VMT SUMMARY								513741	556348	504137	669436

Note: AADT -- Annual Average Daily Traffic  
VMT -- Vehicle Miles of Travel

**BALTIMORE WASHINGTON MEMORIAL PARKWAY 2004 TRAFFIC VOLUME SUMMARY**

Sta. ID.	STATION LOCATION	BEGIN DATE	24 HR. VOL.	SEAS. FACT.	ANN. FACT.	SADT	AADT	REF. STA.
38040	B-W Parkway - Kenilworth Ave. To New York Ave.					100174	98610	Self
3811	B-W Parkway - Landover Road to Kenilworth Ave.	11/1/2004	105055	0.9981	0.9825	104857	103220	38040
3812	B-W Parkway - Annapolis Road to Landover Road	11/1/2004	113055	0.9981	0.9825	112842	111081	38040
3813	B-W Parkway - Riverdale Road to Annapolis Road	11/1/2004	100286	0.9981	0.9825	100097	98535	38040
3814	B-W Parkway - Greenbelt Road to Capital Beltway	11/1/2004	110987	0.9981	0.9825	110778	109049	38040
3815	B-W Parkway - NASA Entrance to Greenbelt Road	11/1/2004	105214	0.9981	0.9825	105016	103376	38040
3816	B-W Parkway - Powder Mill Road to NASA Entranc	11/1/2004	97376	0.9981	0.9825	97193	95675	38040
3817	B-W Parkway - Md. Hwy. 197 to Powder Mill Road	11/1/2004	103620	0.9981	0.9825	103425	101810	38040
3818	B-W Parkway - Md. Hwy. 198 to Md. Hwy. 197	11/1/2004	94704	0.9981	0.9825	94526	93050	38040
3819	B-W Parkway - Md. Hwy. 32 to Md. Hwy. 198	11/1/2004	91640	0.9981	0.9825	91467	90040	38040
38020	B-W Parkway - Capital Beltway to Riverdale Road	11/1/2004	108041	0.9981	0.9825	107838	106154	38040
38030	B-W Parkway - Md. Hwy. 175 to Md. Hwy. 32	11/1/2004	92920	0.9981	0.9825	92745	91297	38040

Note: AADT -- Annual Average Daily Traffic  
 SADT -- Seasonal Average Daily Traffic computed using data for the months containing 80% of annual volume.  
 REF. STA. -- a permanent Automated Traffic Recorder (ATR) reference station used to obtain seasonal and annual adjustment factors for coverage counts.

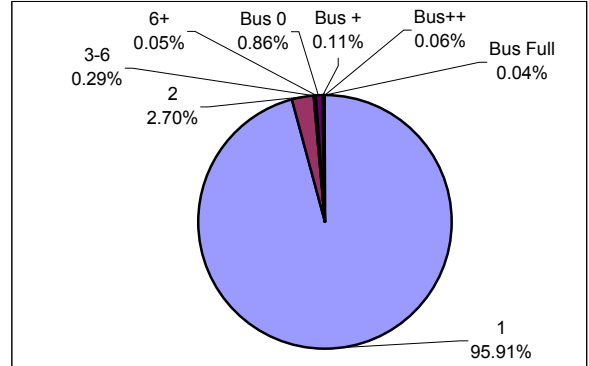
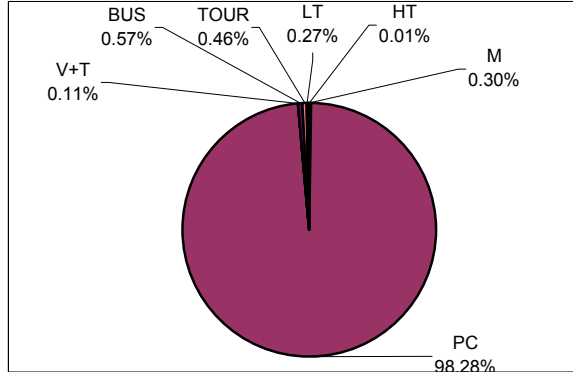
**BALTIMORE WASHINGTON MEMORIAL PARKWAY 2004 TRAFFIC COMPOSITION SUMMARY**

**Vehicle Classification**

**Vehicle Occupancy**

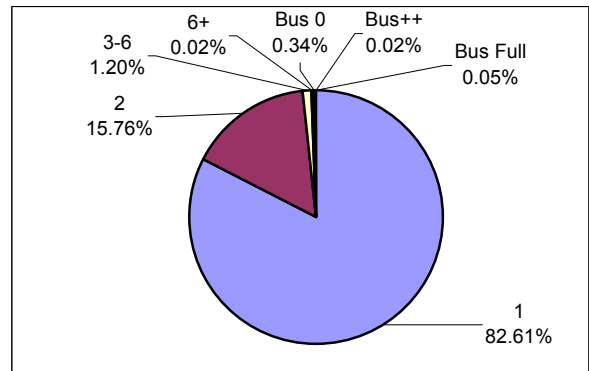
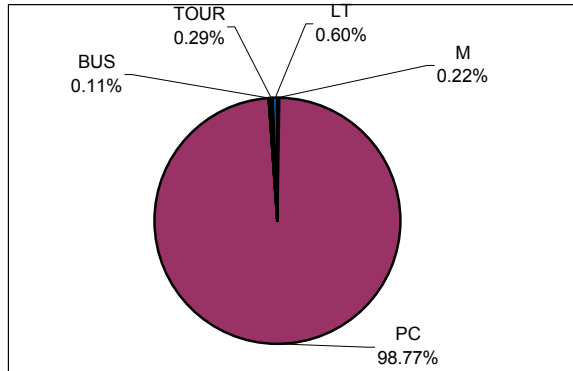
Location: STATION 38030

Location: STATION 38030



Location: STATION 38040

Location: STATION 38040



**CLASSIFICATION LEGEND:**

**OCCUPANCY LEGEND:**

No.	Vehicle Type	FHWA Class
M	Motorcycles	Class 1
PC	Passenger Cars	Class 2
RV	Recreational Vehicles	N/A
V+T	Vehicles/RV pulling Trailer	N/A
BUS	Transit/Shuttle Buses	Class 4
TOUR	Tour Buses	Class 4
LT	Light-duty Trucks	Classes 3, 5
HT	Heavy-duty Trucks	Classes 6 - 13

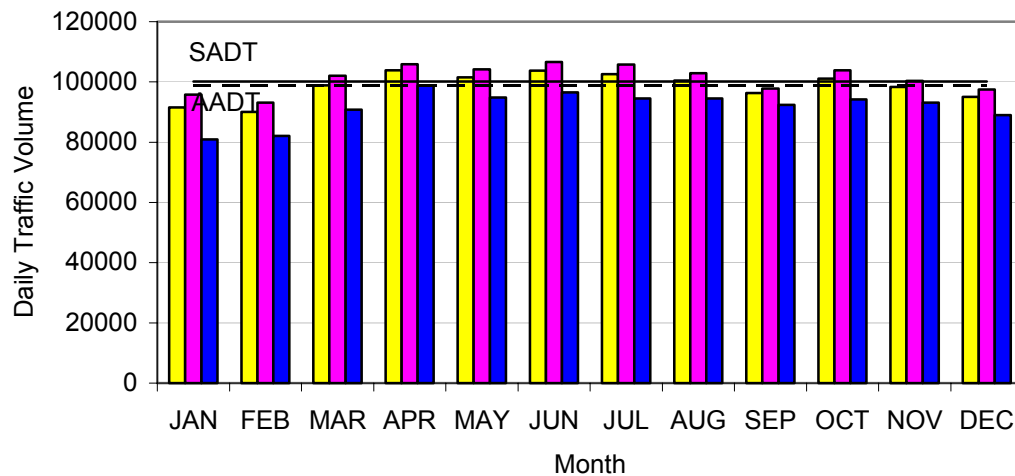
No.	Vehicle Occupancy
1	1 Occupant
2	2 Occupants
3-6	3-6 Occupants (car load)
6+	More than 6 Occupants, (non-Bus)
Bus 0	Bus, No Passengers
Bus +	Bus, Few Passengers
Bus++	Bus, Semi-Loaded
Bus Full	Bus, Fully Loaded

Note: Vehicle Classifications and Vehicle Occupancy values represented by 0% (No Occurrence) are not shown on the charts.

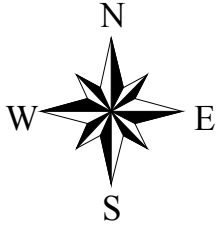
**BALTIMORE WASHINGTON MEMORIAL PARKWAY**

Station: 38040 B-W Parkway - Kenilworth Ave. To New York Ave.

Month	Year	Average Day of Month (MADT)	Average Weekday of Month (MAWDT)	Average Weekend Day of Month (MAWET)	Annual Average Daily Traffic Factor (AADTF)	Seasonal Average Daily Traffic Factor (SADTF)
1	2003	91571	95833	80914	1.0290	1.0453
2	2003	90009	93172	82102	1.0584	1.0752
3	2003	98846	102077	90769	0.9660	0.9814
4	2003	103847	105863	98808	0.9315	0.9463
5	2003	101509	104161	94878	0.9467	0.9617
6	2003	103754	106624	96577	0.9248	0.9395
7	2003	102564	105775	94538	0.9323	0.9470
8	2003	100478	102860	94521	0.9587	0.9739
9	2003	96271	97816	92410	1.0081	1.0241
10	2003	101141	103898	94247	0.9491	0.9642
11	2003	98291	100363	93110	0.9825	0.9981
12	2002	95041	97457	89001	1.0118	1.0279
Annual Average Daily Traffic (AADT)				98610		
Annual Average Weekday Traffic (AAWDT)				101325		
Annual Average Weekend Traffic (AAWET)				91823		
Seasonal Average Daily Traffic (SADT)				100174		

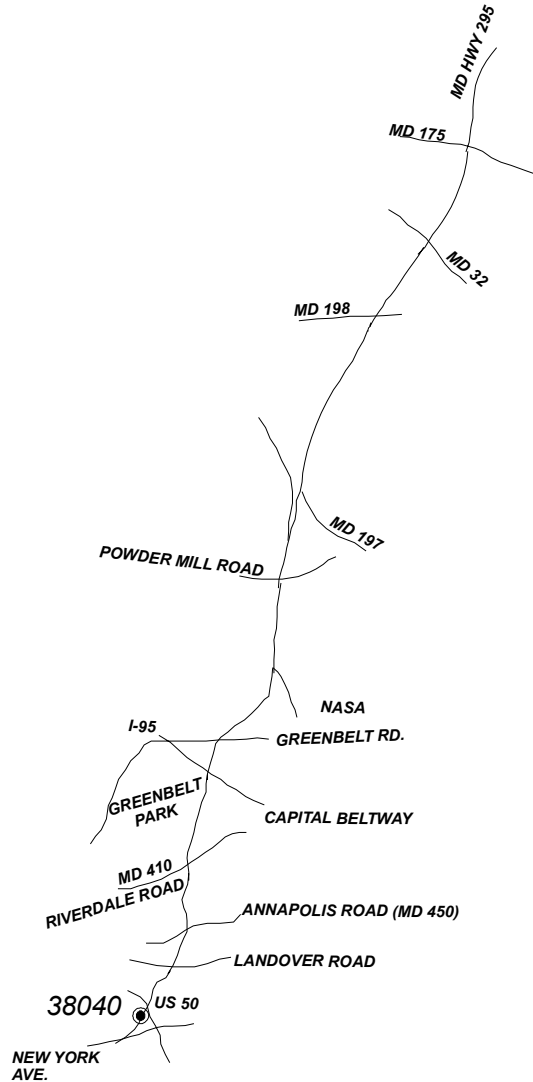


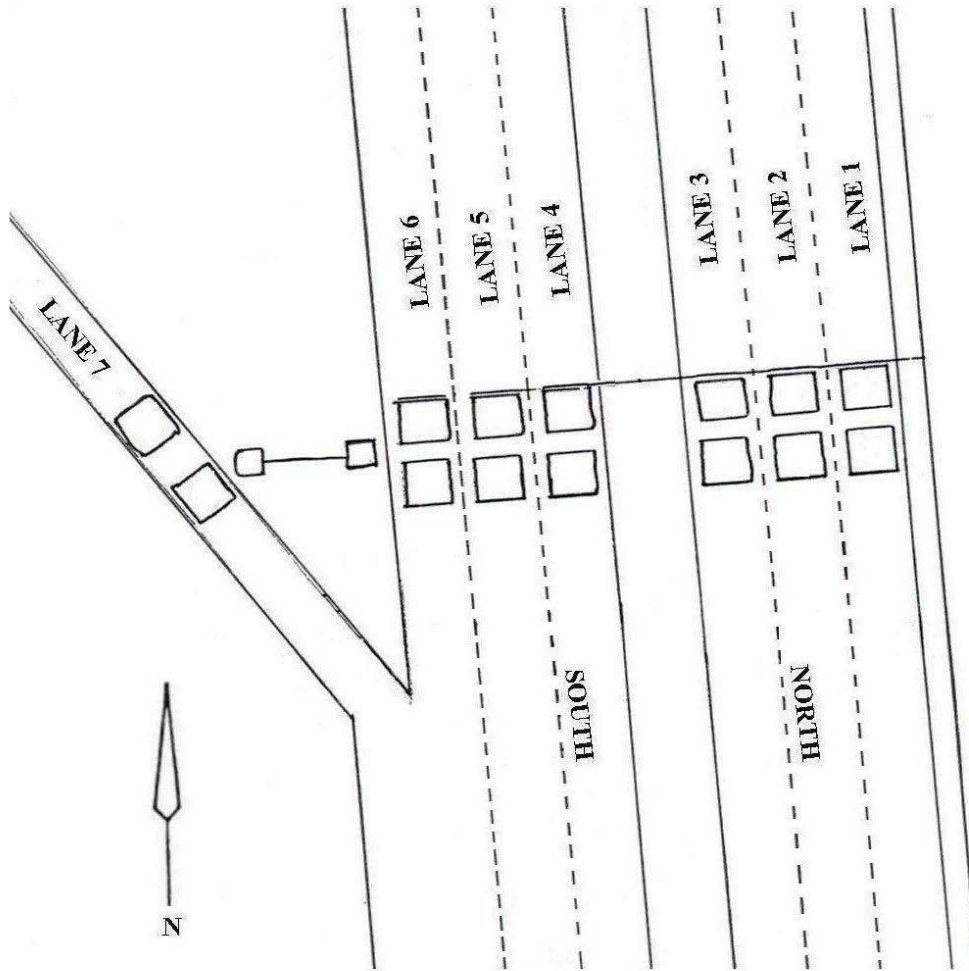
Note: AADTF is used to adjust coverage traffic volumes to AADT volume.  
 SADTF is used to adjust coverage traffic volumes to SADT volume.  
 SADT -- Seasonal Average Daily Traffic for the months containing 80% of annual volume.



# Baltimore Washington Memorial Parkway

Maryland  
U.S. Department of Interior  
NATIONAL PARK SERVICE





BALTIMORE WASHINGTON PARKWAY  
STATION 38040  
KENILWORTH AVENUE

*Devices labeled  
on this sheet  
cannot be verified  
in the field.*