



U.S. Department of Transportation
Federal Highway Administration
Western Federal Lands Highway Division
Vancouver, Washington



"Commitment to Excellence"

SIGNOFF REVIEW

BOOK

for

PROJECT NUMBER

PROJECT NAME

(RETURN TO PS&E LAST)

SIGNOFF PACKAGE TO PS&E CHECKLIST

Project Number: WY PRA-YELL 103(1), 108(1)	Project Name: North Rim and Canyon Area Roads & South Rim Drive (Artist Point Parking Area, Promenade and Overlook)
---	--

Project Manager: Craig Dewey	HDM: Anna Varney
-------------------------------------	-------------------------

Designer: Kevin Parker and Grant Lindsey

CFT Members:

Bridge – Marc Veneroso Environment – Elisa Carlsen Geotechnical – Nathan Jenks Hydraulics – Sven Leon Construction – Howe Crockett	Materials – John Snyder Survey – Jeff Place Programming – Dick Bronder Right of Way/Utilities – N/A
--	--

The following documents and conditions must be met before projects can be forwarded to PS&E for review. Do not forward partially complete project Signoff Packages. The designer provides all documents unless otherwise noted and places them in the project directory on the F drive.

REQUIRED <small>(See footnotes)</small>	INCLUDED <small>(Yes/No)</small>	DOCUMENT	COMMENTS
4	Yes	Data for Synopsis in FEDBizOps <ul style="list-style-type: none"> FP 03 FBO Document FP 96 FBO Document 	See Construction Documents/Memos for more information. If submitted with a preliminary plans posting state as such and provide date of posting. If there was a preliminary plans posting, this form only needs to be resubmitted if there are changes to the concept or philosophy of the project or changes in work. E-mail to Contracts at signoff. Include original signed cover sheet in signoff book. If applicable, approved options memo included as an attachment.
3	Yes	Options Justification	Options Justification and Options Justification Memo provided by PM. See Construction Documents/Memos for more information The approved options memo should be included as an attachment to FEDBizOps.

PS&E CHECKLIST

1. No exceptions.
2. Not required for DOD (including OMAD), BLM, Emergency Relief Federally Owned (ERFO), and Earmarks other than PLD projects.
3. Include when applicable.
4. Required to post the project on FedBizOps site. Include at PS&E signoff or with preliminary plans letter.

SIGNOFF PACKAGE TO PS&E CHECKLIST

REQUIRED (See footnotes)	INCLUDED (Yes/No)	DOCUMENT	COMMENTS
1	Yes	e-Procurement Request Form <ul style="list-style-type: none"> • <i>PM Is "Point of Contact" and PM Branch Chief is "PM/COE".</i> • <i>Dollar amount must match the Letter of Authorization amount (if applicable, see footnote 2).</i> • <i>Dollar amount must be at least as much as the Engineer's Estimate "Total Construction Amount".</i> • <i>Must include the accounting data funding code.</i> 	Form e-Procurement Request Form located in WFL Electronic Form Library The Designer will provide initial information for this form and the PM will complete and send to the Procurement Request preparer. If there are multiple schedules, the amount must be greater than or equal to one of the schedules, at least the smallest schedule.
1	No	Procurement Request (PR) DOT F 4200.1 (for printing) <ul style="list-style-type: none"> • <i>Include estimated printing costs.</i> • <i>Must include the accounting data funding code.</i> • <i>Requisitioner and Funds Certifier must sign the request.</i> 	Form DOT F 4200.1 located in WFL Electronic Form Library The Designer will provide initial information for this form and the PM will complete. Estimate printing costs based on project size: Small: \$5,000; Medium: \$10,000; Large: \$15,000
3	Yes	Waiver From Sealed Bid <ul style="list-style-type: none"> • <i>Provide all pertinent data.</i> • <i>Include in the Procurement Request section of the signoff book.</i> 	After NEPA and before PIH stage, PM should send project information to the Acquisitions Strategy Team. This team will make a decision on the acquisition strategy for that project and the record of this decision will be held in acquisitions. For all projects not advertised under a sealed bid, the Request for Waiver from Sealed Bidding from sealed bid will be provided by the PM at signoff. See Construction Documents/Memos for more information.
2	Yes	Letter of Authorization (LOA) <ul style="list-style-type: none"> • <i>Authorized amount must match the Procurement Request amount.</i> • <i>Authorized amount must be at least as much as the Engineer's Estimate "Total Construction Amount".</i> • <i>The Financial Manager and the Director of Project Delivery must sign LOA.</i> • <i>The LOA must include the accounting data funding code.</i> 	Located with PD Sign-off Forms . The Designer will provide initial information for this form and the PM will complete. If there are multiple schedules, the authorized amount must be greater than or equal to one of the schedules, at least the smallest schedule.

1. No exceptions.
2. Not required for DOD (including OMAD), BLM, Emergency Relief Federally Owned (ERFO), and Earmarks other than PLD projects.
3. Include when applicable.
4. Required to post the project on FedBizOps site. Include at PS&E signoff or with preliminary plans letter.

SIGNOFF PACKAGE TO PS&E CHECKLIST

REQUIRED (See footnotes)	INCLUDED (Yes/No)	DOCUMENT	COMMENTS
1	Yes	Engineer's Estimate (EE) <ul style="list-style-type: none"> • Check with PS&E for current flagger rate. • For A/E designed projects the EE files must be transferred to WFL's computer system and have a file number assigned. • If multiple schedules, file numbers on summary sheet must match (i.e. 06_005A, 06_005B, 06_005C, etc.). • Project number (including state) and name must match Special Contract Requirements project number, and name in footer. • Pay item numbers, descriptions, pay units, quantities, and totals must match the Summary of Quantities and any applicable quantity summary tables. • Accounting data funding code must be filled in on the schedule summary. • Include contingencies and incentives as applicable (Partnering, etc.). • All data fields must be filled in on the summary sheet. • "Construction Engineering Amount" on summary sheet must match Construction Engineering Cost Report. 	<p>Contact IT (Joe Badnin) to accomplish the transfer.</p> <p>Contact IT (Joe Badnin) if the file numbers do not match.</p>
1	Yes	Construction Engineering (CE) Budget <ul style="list-style-type: none"> • Notice to Proceed and Fixed Completion dates must match the date on the Supporting Data for Contract Time document. • Document must be signed by COE. 	<p>The COE provides this form from PRMS.</p>
1	Yes	Contract Time – Use Critical Path Method (CPM) schedule <ul style="list-style-type: none"> • CPM flowchart is signed by the Construction Operations Engineer (COE). Do not make changes to the schedule without the concurrence of the COE (initialed and dated). • Include adequate time to advertise and award the project. Use the PS&E to NTP calculator to determine these dates. (Include a copy in book behind CPM). 	<p>Sample CPM located with PD Sign-off Forms. See cpm_made_easy for more detailed instructions on building CPMs.</p> <p>Project information and signature block is located in the left tab of the header.</p> <p>Include critical submittals such as steel fabrication, fish passage windows, or other items that could affect construction timeline, as well as work restrictions, weather and wildlife, etc.</p> <p>See Construction Documents/Memos for more information.</p>

1. No exceptions.
2. Not required for DOD (including OMAD), BLM, Emergency Relief Federally Owned (ERFO), and Earmarks other than PLD projects.
3. Include when applicable.
4. Required to post the project on FedBizOps site. Include at PS&E signoff or with preliminary plans letter.

SIGNOFF PACKAGE TO PS&E CHECKLIST

REQUIRED (See footnotes)	INCLUDED (Yes/No)	DOCUMENT	COMMENTS
1	Yes	PS&E Assembly and Review (WFLHD-2) <ul style="list-style-type: none"> • All data must be filled in (project number, project name, etc. on first sheet.) • Applicable initials/dates filled in. • Signatures of Project Manager required. • Any remarks must be resolved. Initiator of remarks must state resolution, initial, and date when resolution occurred. • List physical data for this project (hydraulic reports, geotechnical reports & memorandums, bridge data, etc.) • Fill in all applicable permit data. • Include applicable letters of concurrence from agencies. 	<p>WFLHD-2 located with WFLHD Design Forms and Templates.</p> <p>The PM will schedule a Signoff meeting for all projects. If a CFT member cannot attend the meeting, they can either initial prior to the meeting or delegate a representative to attend the meeting in their place. Outstanding issues should be resolved prior to the Signoff meeting. The purpose of Signoff is to ensure that all comments from the Final review have been adequately addressed.</p> <p>Agency concurrence is provided by the PM and can include an e-mail, letter, or signed plan title sheet (for NPS projects).</p>
1	Yes	Highway Design Standards (WFLHD 3) <ul style="list-style-type: none"> • Fill in all pertinent data fields and obtain all signatures 	<p>WFLHD-3 located with WFLHD Design Forms and Templates.</p> <p>To be completed by PIH stage of a project.</p>
3	Yes	Brand Name or Equal Justification Memorandum <ul style="list-style-type: none"> • Provide all pertinent data, obtain approval signatures, and attach all support documentation. 	<p>Request for Name Brand or Equal Approval provided by CFT discipline requesting item.</p> <p>See Construction Documents/Memos for more information.</p>
3	No	Sole Source Justification	<p>Recommendation, Justification & Approval for Sole Source provided by CFT discipline requesting item.</p> <p>See Construction Documents/Memos for more information</p>
1	Yes	Plan/Specification/Award Letter External Distribution List <ul style="list-style-type: none"> • List all external agencies or agency personnel and the number of solicitation copies they are to receive. Include e-mail addresses. • If Award Letter only, specify as such. 	<p>Located with PD Sign-off Forms and in MSWord templates.</p> <p>The designer will provide initial information for this memo and the PM will complete. Contracts may send a final distribution list for a QC check.</p>
1	Yes	Environmental Commitment Summary <ul style="list-style-type: none"> • Completed, signed, and dated. 	<p>Provided by the Environmental Specialist.</p>
1	Yes	Environmental Decision Document <ul style="list-style-type: none"> • CATX, FONSI, or ROD 	

1. No exceptions.
2. Not required for DOD (including OMAD), BLM, Emergency Relief Federally Owned (ERFO), and Earmarks other than PLD projects.
3. Include when applicable.
4. Required to post the project on FedBizOps site. Include at PS&E signoff or with preliminary plans letter.

SIGNOFF PACKAGE TO PS&E CHECKLIST

REQUIRED (See footnotes)	INCLUDED (Yes/No)	DOCUMENT	COMMENTS
3	Yes	Permits <ul style="list-style-type: none"> • <i>Permits must correlate with list in WFLHD –2.</i> • <i>Formatted by Office Automation and Adobe Acrobat (PDF) files created.</i> • <i>PDF documents reside with OA. Originals kept in Environmental Services.</i> • <i>Provide one paper copy to PS&E.</i> 	Environmental Specialist provides this information to the designer who transfers to OA along with the SCRs using the Office Automation Mailbox with a cc to Sharon Craven.
3	Yes	Stormwater Pollution Prevention Plan (AK, ID, WA, WY) Erosion Control Plan (OR) <ul style="list-style-type: none"> • <i>Include plan, with certification if required.</i> • <i>Formatted by Office Automation PDF documents reside with OA.</i> • <i>Provide one paper copy to PS&E.</i> • <i>Include Fire Suppression/Prevention Plan if required.</i> 	Environmental Specialist provides this information to the designer who transfers to OA along with the SCRs using the Office Automation Mailbox with a cc to Sharon Craven.
1	Yes	Notice to Bidders Notice to Offerors (for negotiated projects) <ul style="list-style-type: none"> • <i>Transferred to WFL's computer system through Office Automation.</i> • <i>Formatted by Office Automation.</i> • <i>Provide one paper copy to PS&E.</i> 	Designer or A&E COTR to transfer to OA using the Office Automation Mailbox with a cc to Sharon Craven.
1	Yes	Special Contract Requirements (SCRs) <ul style="list-style-type: none"> • <i>Entered into WFL's computer system through Office Automation.</i> • <i>Table of Contents and SCRs formatted by Office Automation.</i> • <i>Provide one paper copy to PS&E.</i> 	Designer or A&E COTR to transfer to OA using the Office Automation Mailbox with a cc to Sharon Craven.
1	Yes	Plans <ul style="list-style-type: none"> • <i>Title sheet signed and dated.</i> • <i>Project number and name same as footer in SCRs.</i> • <i>Summary of Quantity pay item numbers, pay item descriptions, pay item units, and quantities match Engineer's Estimate and Quantity Tables in plan sheets.</i> • <i>Provide plans in PDF format. Provide one file for each section of the plans (sheets in numeric order).</i> 	<p>Place original signed title sheet ahead of first tab in Signoff Book for delivery to Contracts.</p> <p>PDF file of plans to be placed on I:\Project_Dev\Design\Plan Transfers folder for transfer to contracts. E-mail Contracts when PDF has been posted.</p> <p>See Supplement 9.6.4.4-1 for title sheet instructions.</p>

1. No exceptions.

2. Not required for DOD (including OMAD), BLM, Emergency Relief Federally Owned (ERFO), and Earmarks other than PLD projects.

3. Include when applicable.

4. Required to post the project on FedBizOps site. Include at PS&E signoff or with preliminary plans letter.

SIGNOFF PACKAGE TO PS&E CHECKLIST

REQUIRED (See footnotes)	INCLUDED (Yes/No)	DOCUMENT	COMMENTS
3	Yes	GEOPAK Earthwork Data Listing <ul style="list-style-type: none"> Provide in PDF format with cover sheet. 	Place in a project folder (use a descriptive folder name) under I:\Project_Dev\Design\Plan_Transfer . Use the normal file naming convention for the PDF files: [PRMS#] + "Earthwork" + ".pdf."
3	Yes	GEOPAK Cross-Sections <ul style="list-style-type: none"> Provide in PDF format with cover sheet. 	Place in a project folder (use a descriptive folder name) under I:\Project_Dev\Design\Plan_Transfer . Use the normal file naming convention for the PDF files: [PRMS#] + "XS" + [number] + ".pdf."
3	Yes	Geotechnical Reports/Memorandums <ul style="list-style-type: none"> List name of each Geotech Report and Memo to be distributed to interested bidders. Names and numbers of documents should match those shown on the WFLHD-2 form. 	Provided by the Geotech Specialist.
3	No	Backup Information for Independent Government Estimate (IGE) <ul style="list-style-type: none"> Information used to develop the IGE. 	Required for all negotiated contracts including 8(a) sole source. Place paper copies behind Support Data tab.
3	No	Non-Acquisition WFL web links have been updated <ul style="list-style-type: none"> Remove non-acquisition contact information from project web sites and replace with new contact information. During advertisement all project inquiries should be addressed to Contracts. 	Add the following text to the contact portion of the project web site: NOTICE: This project has been advertised or will soon be advertised. See our Construction Procurement webpage at: http://www.wfl.fhwa.dot.gov/edi/construction.htm for the most current information. All technical questions should be submitted to plans_spec@fhwa.dot.gov . All non-technical questions should be submitted to contracts@mail.wfl.fhwa.dot.gov .
1	Done	Schedule Handoff Meeting with Contracts <ul style="list-style-type: none"> Meeting to discuss project specific information regarding the PS&E package. 	Meeting to be scheduled by Project Manager. Invite Contract Liaison Engineer (LeeAnn Bush) and CO (Mike Johnson or Julee McTaggart – if you don't know which is the CO invite them both)

1. No exceptions.
2. Not required for DOD (including OMAD), BLM, Emergency Relief Federally Owned (ERFO), and Earmarks other than PLD projects.
3. Include when applicable.
4. Required to post the project on FedBizOps site. Include at PS&E signoff or with preliminary plans letter.

DATA FOR SYNOPSIS IN FedBizOpps
FP-03 PROJECTS (all)

All NEPA & 4(f) documentation has been completed with the CE/FONSI/ROD executed on 9/28/06
(date)

Project Manager (signature) (date PM signed) Craig S. Dewey
(printed name of PM)

TYPE OF PROCUREMENT:

SEALED BID

BEST VALUE
 Has the Negotiated Procurement waiver from Chief of Contracting Office (COCO), the Division Engineer, been approved?
 Has the Evaluation Plan been approved?

IDIQ Task Order
 Price only
 Best Value, has the Evaluation Plan been approved?

OTHER: **OPTIONS** (CO approval document attached.) (For Policy & sample CO memo see: WFLNet, under Policies, WFLHD Policies, Acquisition, Construction Contract Options)

IS THIS PROJECT A FULL SCOPE A&E DESIGN? **YES** **NO**

Date: 3/23/07 **Solicitation No.:** DTFH70-
(Contracts use only)
To: CONTRACTS SECTION
From: Kevin Parker (360) 619-7736
Designer
Craig Dewey (360) 619-7702
Project Manager
Howe Crockett (360) 619-7750
Construction Operations Engineer
Anna Varney (360) 619-7776
Highway Design Manager

DESCRIPTION OF PROJECT:

Project Number: WY PRA-YELL 103(1) &
WY PRA-YELL 108(1)
Project Name: North Rim and Canyon Area Roads
South Rim Drive (Artist Point Parking Area, Promenade and Overlook)
Project Length: 4.19 **Kilometers or Miles** (circle one)

Description & type of Work: This work consists of subexcavation, minor grading, retaining walls, stone structures and landscaping, drainage, pavement recycling, base, and paving____
(e.g. grading, drainage, base, paving, structure, etc.) **Please provide detailed info regarding special design features such as bridges, walls, etc.**

LOCATION:

FOREST, PARK, BLM DIST, etc.

Yellowstone National Park

COUNTY

Park

STATE

Wyoming

THIS PROJECT IS LOCATED APPROXIMATELY:

56 Kilometers SW (Direction, i.e., North, NW, etc.)

of Gardiner Montana
(City) (State)

PRICE RANGE:

<input type="checkbox"/>	Under \$500,000	<input checked="" type="checkbox"/>	\$5 million to \$7 million
<input type="checkbox"/>	\$500,000 to \$1 million	<input type="checkbox"/>	\$7 million to \$10 million
<input type="checkbox"/>	\$1 million to \$2 million	<input type="checkbox"/>	\$10 million to \$15 million
<input type="checkbox"/>	\$2 million to \$3 million	<input type="checkbox"/>	\$15 million to \$20 million
<input type="checkbox"/>	\$3 million to \$5 million	<input type="checkbox"/>	Over \$20 million

Note: If the price range is less than \$100,000, has a purchase order been considered?

CONTRACT TIME – The Government Estimate is based on:

FIXED COMPLETION

DATE

SCHEDULE

(indicate # of schedules)

(required information)

One Schedule

Multiple Schedules

A or X

B or Y

C or Z

Options

x

Base

October 15, 2008

x

A

October 15, 2008

B

C

D

E

F

G

PROPOSED PRELIMINARY SOLICITATION SCHEDULE:

1. We will be issuing PRELIMINARY plans? YES NO _____

2. If YES, proposed date electronic Preliminary Plans will be provided to PS&E along with the cover letter to prospective bidders. October 2006
(date)

For a sample Preliminary Plan Cover Letter, see:

<http://wflnet.wfl.fha.dot.gov/departments/acquisition/construction.htm>

DESCRIPTION OF WORK (check one): **METRIC UNITS** **US CUSTOMARY UNITS****PROPOSED SOLICITATION SCHEDULE TIMELINE:**

x **Attach copy of the PS&E to NTP calculation worksheet.** ALL dates filled in.

The worksheet is located at: <http://www.wfl.fhwa.dot.gov/design/resource/schedule.htm>

Then select **PS&E to NTP Calculator**.

**PLEASE INDICATE QUANTITIES & UNITS OF MEASUREMENT IN
METRIC OR ENGLISH UNITS AS IT APPLIES TO THIS PROJECT.**

BREAKOUT QUANTITIES BY SCHEDULE OR OPTION WHERE APPLICABLE.

DIVISION 150 – Project Requirements

152	Construction Survey & Staking	x	YES		NO
153	Contractor Quality Control and Assurance	x	YES		NO
154	Contractor Sampling & Testing	x	YES		NO
155	Schedules for Construction Contracts (<i>construction schedules</i>)	x	YES		NO
157	Soil Erosion Control Devices (<i>erosion control devices</i>) Turbidity monitoring Silt fence			LPSM 1,170 m	
158	Watering for Dust Control			2,730 m3	

DIVISION 200 – Earthwork

201	Clearing & Grubbing			0.76 ha	
202	Additional Clearing & Grubbing (<i>clearing & grubbing</i>) Option A			0.6 ha	
203	Removal of Structures & Obstructions (<i>structures, demolition</i>) Curb and gutter, concrete Handrail Sidewalk, asphalt Wall, timber crib			770 m 60 m 4,523 m2 229 m2	
204	Excavation & Embankment Roadway excavation Option A Subexcavation Select borrow Select borrow, permeable Conserve and place boulders			1,124 m3 3,300 m3 18,810 m3 16,620 t 8,224 t 137 ea	
205	Rock Blasting: Controlled Blast Hole (<i>rock blasting</i>)				

Blasting Consultant (<i>Consultant/Engineering Services</i>)		Yes	No
207	Earthwork Geotextiles (<i>geotextiles</i>)	14,824 m2	
208	Structure Excavation		
211	Roadway Obliteration	50 m2	
212	Linear Grading		
213	Subgrade stabilization	7095 m2	
Other			

DIVISION 250 - Slope Reinforcement and Retaining Walls

251	Riprap	115 m3
	Riprap ditch	144 m
	Boulder, barrier	100 ea
	Boulder, landscape	78 ea
	Remove and reset boulder	22 ea
	Option A	78 ea
252	Rockery	
253	Gabions & Revet Mattresses	
254	Crib Walls (<i>retaining walls</i>)	179 m2
255	Mechanically Stabilized Earth Walls (<i>retaining walls</i>)	50 m2
256	Permanent Ground Anchors (<i>ground anchors</i>)	
257	Alternate Retaining Walls (<i>retaining walls</i>)	
258	Reinforced Concrete Retaining Walls (<i>retaining walls</i>)	
259	Soil Nail Retaining Walls	
260	Rock Bolts	
261	Rock Dowels	
272	Reinforced soil slope	50 m2
Other:		

DIVISION 300 – Aggregate Courses

301	Untreated Aggregate Courses (<i>crushed aggregate</i>)	
302	Treated Aggregate Course	
303	Road Reconditioning, ditch	2,664 m
306	Dust Palliative (<i>crushed aggregate</i>)	
308	Minor Crushed Aggregate (<i>crushed aggregate</i>)	
309	Emulsified Asphalt Treated Base Course (<i>crushed aggregate</i>)	
310	Recycled Aggregate Course (<i>asphalt pavement recycling</i>)	
	Recycled aggregate base	57,634 m2
	Option A	7,924 m2
	Stockpiled aggregate	1737 t
	Option A	328 t
Other		

DIVISION 400 – Asphalt Pavements & Surface Treatments

401	Superpave Hot Asphalt Concrete Pavement	
402	Hot Asphalt Concrete Pavement by Hveem or Marshall Mix Design Method	
403	Hot Asphalt Concrete Pavement (<i>asphalt concrete pavement</i>) Option A	7,855 t 1,768 t
404	Minor Hot Asphalt Concrete (<i>asphalt concrete pavement</i>)	
408	Cold Recycled Asphalt Base Course (<i>asphalt pavement recycling</i>)	
409	Asphalt Surface Treatment	
411	Asphalt Prime Coat (<i>asphalt surface treatment</i>)	5.40 t
412	Asphalt Tack Coat (<i>asphalt surface treatment</i>) Option A	10.70 t 2.7 t
413	Asphalt Pavement Milling	
416	Continuous Cold Recycled Asphalt Base Course (<i>asphalt pavement recycling</i>)	
417	Minor Cold Asphalt Mix	
418	Foamed Asphalt Stabilized Base Course	
428	Flexible Pavement Restoration	
429	Bonded Wearing Course	
	Other	

DIVISION 500 - Rigid Pavement

501	Portland Cement Concrete Pavement	
	Other	

DIVISION 550 – Bridge Construction

551	Driven Piles	
552	Structural Concrete (<i>concrete – major structures</i>)	
553	Prestressed Concrete (<i>concrete prestressed</i>)	
554	Reinforcing Steel	
555	Steel Structures (<i>structures, steel</i>) Soldier piles	91.15 m
557	Timber Structures (<i>structures, timber</i>) Structural timber and lumber, treated	3.5 m ³
559	Waterproofing (<i>concrete – major structures</i>)	
563	Painting (<i>structures, painting</i>)	
565	Drilled Shafts	81 m
566	Shotcrete	
569	Micropiles	
575	Minor Bridge Work	
576	Pile Encapsulation	
	Other	

DIVISION 600 – Incidental Construction

601	Minor Concrete Structures (<i>concrete – minor structures</i>) Concrete Concrete, pad Option A	17.6 m ³ 40 m ² 160 m ²
602	Culverts & Drains (<i>indicate one or both</i>) Small culverts HDPE, perforated culvert Slotted drain	465 m 219 m 220 m
603	Structural Plate Structures (<i>culverts & drains</i>)	
604	Manholes, Inlets, & Catch Basins (<i>culverts & drains</i>) (<i>indicate which</i>) Manhole Inlet	6 ea 13 ea
605	Underdrains, Sheet Drains & Pavement Edge Drains (<i>culverts & drains</i>) (<i>indicate which</i>) Underdrain	230 m
607	Lining pipe culver	33 m
608	Paved Waterways (<i>culverts & drains</i>)	
609	Curb & Gutter (<i>concrete – minor structures</i>) (<i>indicate which</i>) Curb, asphalt Option A Curb and gutter, concrete Option A	1,600 m 162 m 1,200 m 220 m
610	Horizontal Drains	
611	Option A Water system Option A Flexible water tower	LPSM 4 ea
612	Option A Sewer system	LPSM

613	Simulated Stone Masonry Surface (<i>concrete – minor structures</i>)			
615	Sidewalks, Drive Pads & Paved Medians (<i>concrete – minor structures</i>) Sidewalk, concrete Sidewalk, asphalt Option A Drive pad, concrete	33 m2 4,784 m2 50 m2 63 m2		
617	Guardrail			
618	Concrete Barriers & Precast Guardwalls			
619	Fences, Gates & Cattle Guards			
620	Stone masonry, edge wall Stone masonry, boulder barrier Stone masonry headwall Remove and reset stone masonry, boulder barrier Remove and reset stone masonry headwall	40 m2 22 m 4 ea 20 m 2 ea		
621	Monuments & Markers (<i>construction survey & staking</i>)		YES	NO
622	Rental Equipment	x	YES	NO
624	Topsoil (<i>landscaping & related items</i>) Topsoil Option A	1.51 ha 1,894 m2		
625	Turf Establishment (<i>indicate seeding or mulching separately</i>) Mulch Option A	1.51 ha 2,200 m2		
626	Plants, Trees, Shrubs, Vines & Groundcovers			
629	Rolled Erosion Control Products & Cellular Confinement Systems (<i>turf establishment</i>)			
633	Permanent Traffic Control Devices (traffic control devices) Signs Option A Sign systems Option A Snowpole holders Option A	19 ea 6 ea 11.86 m2 4.99 m2 338 ea 97 ea		
634	Permanent Pavement Markings (<i>traffic pavement markings</i>) Pavement markings Option A	12,950 m 1,235 m		
635	Temporary Traffic Control (<i>traffic control – flaggers & pilot cars</i>)			
Flagger:	Hours: 700 Option A 420	Pilot Car:	Hours:	
636	Signal, Lighting, & Electrical Systems Option A System installation Option A Luminaire	LPSM 4 ea		
637	Facilities & Services (<i>field offices, laboratories, & housing</i>)			
645	Locating Utilities			
646	Buildings and Fixtures (<i>use pay item description</i>) Restroom facility, government furnished Trash receptacle Pedestrian railing, timber	2 ea 4 ea 923 m		

Option A	Remove and reset trash receptacle	6 ea
647	Mitigation (<i>use pay item description</i>)	
648	Pipeline Energy Utilities	
650	Temporary Diversions	
651	Rockfall Protection	
	Other	

SAMPLE

WFLHD E-PROCUREMENT REQUEST FORM



* For Construction Contracts, A/E Task Orders, Service Contract Task Orders & Reimbursable Agreements Only

NAME (POINT OF CONTACT/COTR): Karl Gleason TELEPHONE: (360) 619-7823

PROCUREMENT TYPE: A&E TASK ORDER REIMBURSABLE AGREEMENT
 CONSTRUCTION CONTRACT SERVICE CONTRACT TASK ORDER

NEW CONTRACT/RA/TO MODIFICATION TO EXISTING CONTRACT/RA/TO NO. _____
 Contract/Task Order #/Modification No.

NEW PR AMENDMENT TO EXISTING PR _____
 Procurement Request No.

DATE SERVICE IS REQUIRED: 02/05/2009

FOR PROJECT FUNDS ONLY:

PROJECT MANAGER/COE NAME: Ted Wood ZZ NUMBER: _____

PROJECT NUMBER AND NAME: WA FS ERFO 2008(1)-20(1) Mallardy Creek Bridge and Hard Creek Bridge Emergency Repairs

DESCRIPTION OF ITEM OR SERVICE <i>For A/E Task Orders, include information found in the introduction to "Statement of Work" For Reimbursable Agreements, Service Contract Task Orders, or Construction Contracts, briefly describe the services you are requesting.</i>	QTY	UNIT	ESTIMATED COST	
			UNIT	AMOUNT
WA FS ERFO 2008(1)-20(1) Mallardy Creek Bridge and Hard Creek Bridge Emergency Repairs	1	LPSM	\$198,061.50	\$198,061.50

STATEMENT OF ESSENTIAL NEED <i>For A/E Fixed Price Task Orders, list purpose for requesting item or service. For A/E Labor Hour Task Orders, list justification for not using Firm Fixed Price. For Reimbursable Agreements, include reason for entering into an agreement vs. contracting directly with a commercial source. For Service Contract Task Orders, include reason why service cannot be performed by in-house government staff. For Construction Contracts, state construction contract.</i>	TOTAL ESTIMATED COST
Construction contract	\$198,061.50

ACCOUNTING DATA

PROJECT NUMBER	TASK NUMBER	ORG(ANIZATION)	BUDGET OBJECT CODE	AMOUNT
1517537120114	540.00.08X0.53	1753000000	25255 - Construction Contract	\$198,061.50

FOR PREPARER ONLY: PR TRACKING #: DATE RECEIVED:

U.S. DEPARTMENT OF TRANSPORTATION FEDERAL HIGHWAY ADMINISTRATION	LETTER OF AUTHORIZATION AND/OR APPROVAL FOR FEDERAL LANDS HIGHWAY PROGRAM PROJECT ACTIVITY	STATE WYOMING	FLH PROJECT NO. WY PRA-YELL 103(1) WY PRA-YELL 108(1)
		FEDERAL UNIT YELLOWSTONE NATIONAL PARK	
	COUNTY PARK	FEDERAL AGENCY PROJ. NO. 76929, 54345	

PROJECT ROUTE NO., TERMINI, LENGTH, DESCRIPTION OF WORK:

WY PRA-YELL 103(1) NORTH RIM AND CANYON AREA ROADS

Termini: 300+075.99 to 303+511.52

Length: 3.436 kilometers

Description: grading, base, paving, drainage, walls

WY PRA-YELL 108(1) SOUTH RIM DRIVE (ARTIST POINT PARKING AREA, PROMENADE, AND OVERLOOK)

Termini: 45+015 to 45+540, 55+000 to 55+201, & 65+000 to 65+029

Length: 0.755 kilometers

Description: grading, base, paving, drainage, walls

PROJECT CLASSIFICATION OR PHASE OF WORK	FLHP FUNDS AUTHORIZED	OTHER FUNDS (SOURCE*)	DATE
PLANNING AND RESEARCH			
PRELIMINARY ENGINEERING			
RIGHTS-OF-WAY			
CONSTRUCTION: Base Schedule	\$4,800,000	\$1,336,000	4/4/2007
CONSTRUCTION ENGINEERING			
OTHER (SPECIFY)			

SUMMARY of AUTHORIZATION

DTFH7007CN0410301: Account No. 1517560410301 540.00.F170.56 1756001404 25255 \$4,800,000

DTFH7007CN0410801: Account No. 1517560410801 R40.00.15F0.56 1756001404 25255 \$1,336,000*

SECTION 203 POO WFL

*\$386,000 NPS Repair/Rehabilitation funds and \$950,000 Yellowstone National Park Foundation funds

RECOMMENDED FOR APPROVAL

U.S. DEPARTMENT OF TRANSPORTATION
Federal Highway Administration

By: _____
FINANCIAL MANAGER

By: _____
DIRECTOR OF PROJECT DELIVERY

Date: _____

Date: _____

COVER SHEET

SOURCE SELECTION INFORMATION

See FAR 3.104

This document contains source selection information related to the conduct of a Federal agency procurement, the disclosure of which is restricted by Section 27 of the Office of Federal Procurement Policy Act (41 U.S.C. 423). The unauthorized disclosure of such information may subject both discloser and recipient of the information to contractual, civil, and/or criminal penalties as provided by law.

Project No. : MT PFH 59-1(2) WY PRA-YELL 12(5) NPS PKG 78546

Project Name: BEARTOOTH HIGHWAY PHASE 2

State: MT County: PARK

Federal Location: NPS, USFS, MDT

Construction Type: not indicated

File: 07_001A

COMBINED SUMMARY

Account Nos.: 1517300590002 540.00.F150.30 1730000000 25255
 1517560401205 540.00.F170.56 1756001404 25255

Project Termini	Project Length
Beartooth Highway	6.125 Km
Yellowstone National Park	0.660 Km

Total of Bid Items:	10,824,245.00
Incentives:	
Estimate for Quality Material Incentive	139,000.00
Estimate for Pavement Roughness Incentive	76,000.00
Partnering Incentive	5,000.00
Estimate for Asphalt Binder Adjustment	120,000.00
Estimate for Fuel Price Adjustment	130,000.00

Total Construction Amount:	11,294,245.00
Construction Engineering Amount:	867,000.00
Total Estimated Cost:	12,161,245.00

Remarks:

Contract Completion Date: September 25, 2009

Reviewed by/Date: April 19, 2007

The following Items are Contract Quantity:

20101, 41404

**FOR OFFICIAL
USE ONLY**

Project No. : MT PFH 59-1(2) WY PRA-YELL 12(5) NPS PKG 78546

Project Name: BEARTOOTH HIGHWAY PHASE 2

State: MT County: PARK

Federal Location: NPS, USFS, MDT

Construction Type: not indicated

File: 07_001A

ACCOUNT SUMMARY

Account No.: 1517300590002 540.00.F150.30 1730000000 25255

	Total of Bid Items:	10,654,617.50
Incentives:		
		0.00
Estimate for Quality Material Incentive		135,000.00
		0.00
	Total Construction Amount:	10,789,617.50
	Construction Engineering Amount:	853,413.18
	Total Estimated Cost:	11,643,030.68

Remarks:

Contract Completion Date: September 25, 2009

Reviewed by/Date: April 19, 2007

FOR OFFICIAL
USE ONLY

Schedule A

ENGINEER'S ESTIMATE

05/07/07

Project No. : MT PFH 59-1(2) WY PRA-YELL 12(5) NPS PKG 78546

Project Name: BEARTOOTH HIGHWAY PHASE 2

State: MT County: PARK

Federal Location: NPS, USFS, MDT

Construction Type: not indicated

File: 07_001A

A C C O U N T S U M M A R Y

Account No.: 1517560401205 540.00.F170.56 1756001404 25255

	Total of Bid Items:	169,627.50
Incentives:		0.00
	Estimate for Quality Material Incentive	4,000.00
		0.00
	Total Construction Amount:	173,627.50
	Construction Engineering Amount:	13,586.82
	Total Estimated Cost:	187,214.32

Remarks:

Contract Completion Date: September 25, 2009

Reviewed by/Date: April 19, 2007

FOR OFFICIAL
USE ONLY

Project No. : MT PFH 59-1(2) WY PRA-YELL 12(5) NPS PKG 78546

05/07/07

Project Name: BEARTOOTH HIGHWAY PHASE 2

File: 07_001A

Item No.	Quantity	Unit	Unit Price	Amount
15101	Mobilization			
Acc't 1	1073000.00			1,073,000.00
Total	ALL	LPSM	1,073,000.00	1,073,000.00
15201	Construction survey and staking			
Acc't 1	145000.00			145,000.00
Acc't 2	5000.00			5,000.00
Total	ALL	LPSM	150,000.00	150,000.00
15209	Miscellaneous survey and staking			
Acc't 1	160.00			40,000.00
Total	160	hour	250.00	40,000.00
15303	Quality control and assurance system			
Acc't 1	145000.00			145,000.00
Acc't 2	5000.00			5,000.00
Total	ALL	LPSM	150,000.00	150,000.00
	Contractor testing			
Acc't 1	290000.00			290,000.00
Acc't 2	10000.00			10,000.00
Total	ALL	LPSM	300,000.00	300,000.00
15501	Construction schedule			
Acc't 1	14500.00			14,500.00
Acc't 2	500.00			500.00
Total	ALL	LPSM	15,000.00	15,000.00
15703	Silt fence			
Acc't 1	3000.00			45,000.00
Total	3,000	m	15.00	45,000.00

FOR OFFICIAL
USE ONLY

Project No. : MT PFH 59-1(2) WY PRA-YELL 12(5) NPS PKG 78546

05/07/07

Project Name: BEARTOOTH HIGHWAY PHASE 2

File: 07_001A

Item No.	Quantity	Unit	Unit Price	Amount
15718	Diversion channel			
Acc't 1	230.00			46,000.00
Total	230	m	200.00	46,000.00
15724	Wattle			
Acc't 1	2200.00			33,000.00
Acc't 2	100.00			1,500.00
Total	2,300	m	15.00	34,500.00
15729	Soil stabilization			
Acc't 1	50.00			20,000.00
Total	50	slry unit	400.00	20,000.00
15801	Watering for dust control			
Acc't 1	14500.00			217,500.00
Acc't 2	500.00			7,500.00
Total	15,000	m3	15.00	225,000.00
15801	Clearing and grubbing			
Acc't 1	15.09			256,530.00
Total	15.090	ha	17,000.00	256,530.00
20301 A	Removal of sign/marker			
Acc't 1	19.00			3,800.00
Acc't 2	1.00			200.00
Total	20	each	200.00	4,000.00
20301 B	Removal and stockpiling of sign			
Acc't 1	1.00			200.00
Total	1	each	200.00	200.00
20401	Roadway excavation			
Acc't 1	86000.00			1,290,000.00
Total	86,000	m3	15.00	1,290,000.00

FOR OFFICIAL
USE ONLY

Project No. : MT PFH 59-1(2) WY PRA-YELL 12(5) NPS PKG 78546

05/07/07

Project Name: BEARTOOTH HIGHWAY PHASE 2

File: 07_001A

Item No.	Quantity	Unit	Unit Price	Amount
20402	Subexcavation			
Acc't 1	27000.00			297,000.00
Total	27,000	m3	11.00	297,000.00
20406	Select borrow			
Acc't 1	64000.00			960,000.00
Total	64,000	t	15.00	960,000.00
20416	Rock borrow			
Acc't 1	12500.00			150,000.00
Total	12,500.0	t	12.00	150,000.00
20704	Geogrid , Biaxial			
Acc't 1	19800.00			49,500.00
Total	19,800	m2	2.50	49,500.00
21105	Stream channel obliteration			
Acc't 1	220.00			2,200.00
Total	220.0	m	10.00	2,200.00
25101 A	Placed riprap, class 2			
Acc't 1	7800.00			624,000.00
Total	7,800.0	m3	80.00	624,000.00
25101 B	Placed riprap, class 4			
Acc't 1	80.00			9,200.00
Total	80	m3	115.00	9,200.00
25107 A	Riprap lined ditch , type 1			
Acc't 1	500.00			30,000.00
Total	500	m	60.00	30,000.00

FOR OFFICIAL
USE ONLY

Construction Engineering Budget

ID PFH 60-1(1), SALMON RIVER BRIDGE

Internal CE budget

FY	Quarter 1	Quarter 2	Quarter 3	Quarter 4	FY total
Wkcd: C	Account #: F15-17-16-52-0600-001 C		Proj #: 1517160600001	Task #: 520.C0.F150.16	
FY 2007	\$0.00	\$0.00	\$0.00	\$132,400.00	\$132,400.00
FY 2008	\$145,100.00	\$139,300.00	\$87,200.00	\$0.00	\$371,600.00
Past Expend:	\$13,001.59	Future budget:	\$0.00	Wkcd C total	\$517,001.59
Wkcd: M	Account #: F15-17-16-52-0600-001 M		Proj #: 1517160600001	Task #: 520.M0.F150.16	
FY 2007	\$0.00	\$0.00	\$0.00	\$11,000.00	\$11,000.00
FY 2008	\$12,100.00	\$11,600.00	\$7,300.00	\$0.00	\$31,000.00
Past Expend:	\$0.00	Future budget:	\$0.00	Wkcd M total	\$42,000.00
Wkcd: N	Account #: F15-17-16-52-0600-001 N		Proj #: 1517160600001	Task #: 520.N0.F150.16	
FY 2007	\$0.00	\$0.00	\$0.00	\$16,500.00	\$16,500.00
FY 2008	\$18,100.00	\$17,400.00	\$10,900.00	\$0.00	\$46,400.00
Past Expend:	\$0.00	Future budget:	\$0.00	Wkcd N total	\$62,900.00
Wkcd: T	Account #: F15-17-16-52-0600-001 T		Proj #: 1517160600001	Task #: 520.T0.F150.16	
FY 2007	\$0.00	\$0.00	\$0.00	\$0.00	\$0.00
FY 2008	\$0.00	\$0.00	\$0.00	\$0.00	\$0.00
Past Expend:	\$2,386.12	Future budget:	\$0.00	Wkcd T total	\$2,386.12
Total Internal CE					\$ 624,287.71

Total Internal and External CE Budget \$ 624,287.71

CE begins: 07/09/2007

CE ends: 05/23/2008

Notice to proceed: 07/27/2007

Fixed Completion date: 05/01/2008

Construction amount: \$ 4,200,000

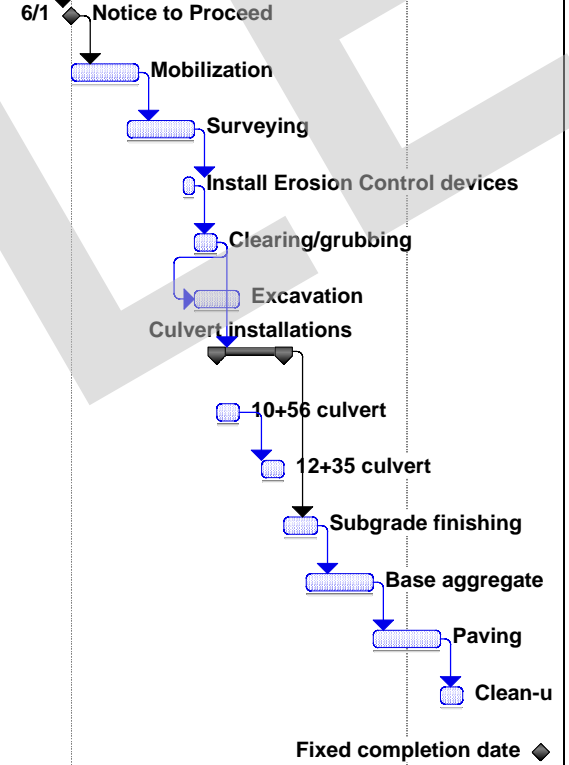
Percent CE: 14.9 %

Prepared by: Jane Traffalis, ID/MT COE

Date: 05/01/2007

Project Number: _____
 Project Name: _____
 Notice to Proceed: _____
 Fixed Completion Date: _____
 COE Approval: _____

ID	Task Name	Duration	Start	Finish	Predecessors	May					June				July	
						4/29	5/6	5/13	5/20	5/27	6/3	6/10	6/17	6/24	7/1	7/8
1	Award	0 days	Tue 5/1/07	Tue 5/1/07												
2	Notice to Proceed	0 days	Fri 6/1/07	Fri 6/1/07	1											
3	Mobilization	4 days	Fri 6/1/07	Wed 6/6/07	2											
4	Surveying	4 days	Wed 6/6/07	Mon 6/11/07	3FS-1 day											
5	Install Erosion Control devices	1 day	Mon 6/11/07	Mon 6/11/07	4FS-1 day											
6	Clearing/grubbing	2 days	Tue 6/12/07	Wed 6/13/07	5											
7	Excavation	4 days	Tue 6/12/07	Fri 6/15/07	6FS-2 days											
8	Culvert installations	4 days	Thu 6/14/07	Tue 6/19/07	6											
9	10+56 culvert	2 days	Thu 6/14/07	Fri 6/15/07												
10	12+35 culvert	2 days	Mon 6/18/07	Tue 6/19/07	9											
11	Subgrade finishing	3 days	Wed 6/20/07	Fri 6/22/07	8											
12	Base aggregate	4 days	Fri 6/22/07	Wed 6/27/07	11FS-1 day											
13	Paving	4 days	Thu 6/28/07	Tue 7/3/07	12											
14	Clean-up	2 days	Wed 7/4/07	Thu 7/5/07	13											
15	Fixed completion date	0 days	Fri 7/13/07	Fri 7/13/07												



Project: Sample CPM.mpp
 Date: Tue 5/15/07

Task		Milestone		External Tasks	
Split		Summary		External MileTask	
Progress		Project Summary		Split	

PS&E ASSEMBLY AND REVIEW

PROJECT:	WY PRA-YELL 103(1) PRA-YELL 108(1)	North Rim and Canyon Area Roads South Rim Drive (Artist Point Parking Area, Promenade and Overlook)		Park
	State Project No.	Name		County

REVIEWS/APPROVALS

Advance Plans to Agencies:	3/19/2007	NPS Approval:	3/23/2007
Sign-off Meeting:	4/2/2007	Forest Service Concurrence:	N/A
Final Plan-In-Hand:	3/15/2007	Agency Concurrence:	N/A
State DOT Concurrence:	N/A	Agency Concurrence:	N/A

PERMITS/CLEARANCES

Environmental: Cat Exc.	9/28/2006	Other:	N/A
Right-of-Way:	N/A	Other:	N/A
Permits:	See page 3	Other:	N/A

Please review the attached documents and initial to indicate your approval of this project for advertisement. On the reverse side, list documents available for Bidder review under the appropriate heading.

Reviewer	BRIDGE	CONSTR	DESIGN	ENV	GEO	HYDR	MAT	R/W-UTIL	SURVEY
Initials									
Date									

Remarks: _____

Recommended for approval by: _____ Date: _____
Project Manager

INFORMATION AVAILABLE FOR REVIEW BY BIDDERS

Hydraulic and Hydrological Data: _____

Bridge Data: _____

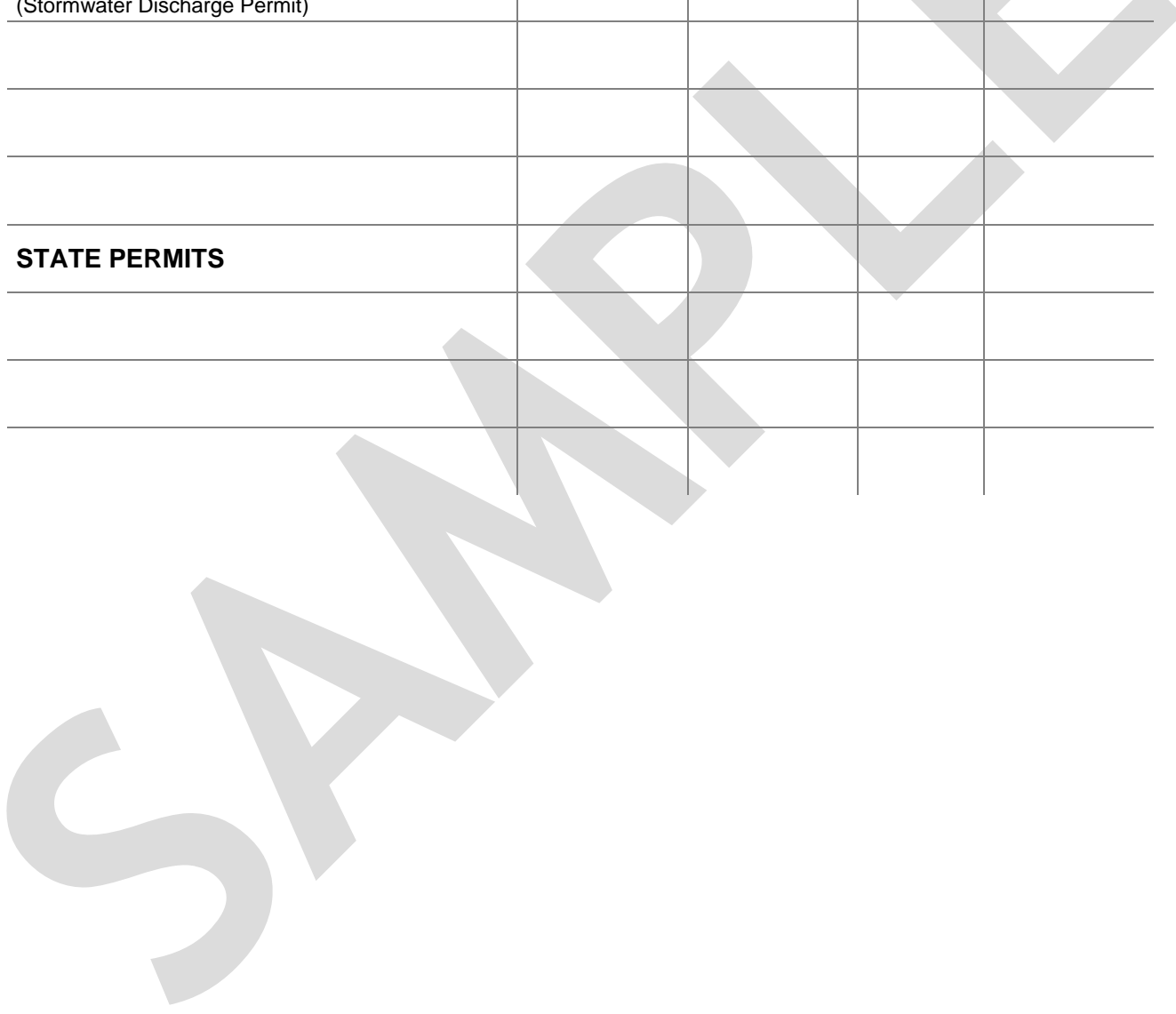
Geotechnical Data: _____

Design Data: _____

Other Data: _____

STATE OF WYOMING

FEDERAL PERMITS	NOT APPLICABLE	APPLICABLE		
		Date	Attached	Expires
COE's Section 404 Permit Clean Water Act of 1977 (P.L. 95-217, Section 404)		1/23/2007	X	Under renewal
U.S. Coast Guard Permit Rivers and Harbors Act	N/A			
National Pollution Discharge Elimination System (NPDES) (Stormwater Discharge Permit)		1/23/2007	X	3/15/2011
STATE PERMITS				



WESTERN FEDERAL LANDS HIGHWAY DIVISION HIGHWAY DESIGN STANDARDS

Project Number and Name: _____
 Location: _____
 Type of Project: New Construction Reconstruction RRR
 Description of Work: _____
 System: Forest Service National Park Service Other (describe) _____
 National Highway System (NHS) Non NHS
 Functional Classification: ...select... _____
 Owner Agency: _____

TRAFFIC	YEAR	ADT			PERCENT TRUCKS		
		AVERAGE	SEASONAL	DHV	DHV	ADT	D
Current							
Future							

Design Standards: AASHTO NPS Other (describe) _____
 Terrain: Level Design Speed: _____
 Posted or Regulatory Speed Limit: ?? MPH [?? km/h] Exception: _____

GEOMETRIC AND BRIDGE CRITERIA	STANDARD	AS DESIGNED	EXCEPTION
Traveled Way Width	?	??	
Shoulder Width	?	??	
Crown	2%	2%	
Horizontal Curvature	?	??	
Superelevation	e(max) = ?% Δ = 0.??%	e(max) = ?% Δ = 0.??%	
Grades	?%	?%	
Vertical Curvature	K(crest) = ? K(sag) = ?	K(crest) = ?? K(sag) = ??	
Stopping Sight Distance			
Horizontal Clearance to Structure (not clear zone)			
Vertical Clearance to Structure			
Bridge Width	?	??	
Bridge Loading			
Bridge Railing	NCHRP-350		

Descriptions of and reasons for exceptions to standards:

Analysis of risks and design considerations proposed to mitigate exceptions:

Describe guidelines used and any variances from recommended Roadside Design (clear zone, guardrail) guidelines:

RECOMMENDED ACTION:

- There are no exceptions to applicable standards, and the project should proceed with the final PS&E.
- There are exceptions to standards as listed on the front sheet and these exceptions have been reviewed with the appropriate client, cooperators, and interested agencies and parties, and are considered acceptable.

PREPARED BY:

Date

Lead Designer

APPROVAL IS RECOMMENDED:

Date

...select...Highway Design Manager

Date

Stephen Chapman, Highway Standards Engineer

I CONCUR WITH THE ABOVE RECOMMENDATIONS:

Date

...Official from maintaining agency...

Date

Edwin (Ted) M. Wood Jr., Project Development Eng.

THE ABOVE RECOMMENDATIONS ARE APPROVED:

Date

Robert B. Lale, Director, Project Delivery

Memorandum

WESTERN FEDERAL LANDS HIGHWAY DIVISION
610 EAST FIFTH STREET
VANCOUVER, WA 98661-3801



U.S. Department
of Transportation
**Federal Highway
Administration**

Subject: Request for Brand Name or Equal Approval
???Item number/description
??Project No/Name

Date: ??

From: ?????
????? Highway Design Manager or Project Manager

To: Elizabeth Firestone, Contracting Officer

We are hereby requesting authorization to use a brand name product(s) for the above referenced project. The requested product(s) will be use according to Section [No.].— [SECTION DESCRIPTION], Item [No.] [Item Description]. A brief narrative describing the history and reasoning behind this request is attached.

Federal Acquisition Regulations (FAR) Subpart *11.104 Use of band name or equal purchase descriptions*, states:

(a) While the use of performance specifications is preferred to encourage offerors to propose innovative solutions, the use of brand name or equal purchase descriptions may be advantageous under certain circumstances.

(b) Brand name or equal purchase descriptions must include, in addition to the brand name, a general description of those salient physical, functional, or performance characteristics of the brand name item that an "equal" item must meet to be acceptable for award. Use brand name or equal descriptions when the salient characteristics are firm requirements

In conformance with FAR Subpart 11.104, I submit the following information:

Product Name:

Manufactured by: [Name/Address }

Phone:

Fax:

Email:

Salient physical, functional, or performance characteristics that an approved equal must meet to be acceptable: See attachment, Subsection [No. & name].

(2) Attachments:

Request for Brand Name or Equal Approval

Proj No.????

Proj Name?????

Page 2

Narrative

Proposed Subsection showing salient characteristics.

cc: Design Book

SIGNATURES

Pursuant to FAR Subpart 11.104:

Requested by:

_____ Date: _____
????insert name???

?? Highway Design Manger or Project Manager

Approved by:

_____ Date: _____
Elizabeth Firestone
Contracting Officer

**NOTE: Include this approved document with the items submitted to PS&E
at time of Project Signoff.**



U.S. Department
of Transportation
**Federal Highway
Administration**

Memorandum

**WESTERN FEDERAL LANDS HIGHWAY DIVISION
610 EAST FIFTH STREET
VANCOUVER, WA 98661-3801**

Subject: Plan/Specification/Award Letter External Distribution List
WY PRA-YELL 103(1) and WY PRA-YELL 108(1)
North Rim and Canyon Area Roads & South Rim Drive (Artist Point
Parking Area, Promenade and Overlook)

Date: March 29, 2007

From: Craig Dewey
Project Manager

In Reply Refer To:
HFL-17

To: Program Planning and Administration Branch
Acquisition Section

Please provide plans and specifications to the following customers:

Nancy Ward
Yellowstone National Park
PO Box 168
Yellowstone, WY 82190-0168
address@nps.gov

(5 copies)

Suzanne Lewis, Superintendent
Yellowstone National Park
PO Box 168
Yellowstone, WY 82190-0168
address@nps.gov

(No copies – send Award Letter only)

**MOVING THE
AMERICAN
ECONOMY**



**Minuteman Missile Base Maintenance Area Road Rehabilitation Project
MT OMAD 18(40)
Environmental Commitment Summary
February 7, 2007**

Listing of Environmental and Cultural Resource Documentation, Permits, and Mitigation Commitments

The PS&E package for the Minuteman Missile Base Access Roads Project, MT OMAD 18(40), has been reviewed for compliance with environmental commitments as recorded in project NEPA documentation and associated project correspondence. The Special Contract Requirements (SCRs) used for this review are attached.

Project NEPA documentation and supporting documentation in which commitments were required is as follows:

- *Categorical Exclusion Minuteman Missile Base Access Roads*, WFLHD, February 7, 2007
- *Project Checklist*, WFLHD, February 7, 2007

The project is below the threshold for federal regulatory permits. The Contractor will be required to obtain all permits and authorizations for contractor selected sources associated with this project.

No mitigation measures were required as a result of the consultations, conferencing, coordination, and the resultant effects determinations, project permits and authorizations and associated requirements. However, best management practices have been incorporated into the project to protect natural resources. Specific commitments and the parties responsible for completing them are identified in the following tables. The WFLHD is ultimately responsible for ensuring that all commitments are met and for recording completed tasks in the tables. Where the WFLHD is listed as the responsible party, then the WFLHD is responsible for completing the task as well as completing the table.

Legend	
Term in Table	Refers to
CE	Categorical Exclusion
CP	Contract Plan Sheets
ECP	Stormwater, Erosion Control, and Sediment Control Best Management Practices
FP-03	Standard Specifications For Construction of Roads and Bridges on Federal Highway Projects FP-03
MAFB	Malmstrom Air Force Base Requirement
SCR	Special Contract Requirements for the project
USFWS	Teleconferencing with the US Fish and Wildlife Service

Commitment	Source	Documented	Responsible	Completed (Date and Initials)
Install and maintain erosion and sediment control measures, including straw bales, at all crossings where water may be present. Retain measures in place and maintain them until the site is revegetated and in a stable condition.	CE	CP N.1 – N.2 ECP (SCR Section I) SCR 157.04 SCR 157.06 SCR 157.08	Contractor	
Thoroughly wash vehicles and equipment to remove weed seeds prior to moving onto the project (including material sources) and when moving from one site to another.	MAFB	SCR 107.10	Contractor	
Store all food, toiletries, and other potential bear attractants in bear-proof containers and make these items unavailable to bears when working in grizzly bear habitat (Routes F8, F9, and F11).	CE	SCR 107.10	Contractor	

Commitment	Source	Documented	Responsible	Completed (Date and Initials)
Remove all trash from the project site each day and dispose of trash in a way that is unavailable to bears when working in grizzly bear habitat (Routes F8, F9, and F11).	CE	SCR 107.10	Contractor	
Do not use seeding mixes or straw bales or other materials that contain vegetation known to attract bears when working in grizzly bear habitat (Routes F8, F9, and F11). Species that attract bears include most <i>Trifolium</i> (clover) species.	CE	SCR 107.10	Contractor	
Do not feed bears.	CE	SCR 107.10	Contractor	
Report grizzly bear sightings or incidents to the CO and MAFB personnel as soon as possible.	CE	SCR 107.10	Contractor	
Modify construction activities any time the potential of compromising the safety of a grizzly bear is identified.	CE	SCR 107.10	Contractor	
Apply dust palliative treatments according to manufacturer's instructions. Obtain the Material Safety Data Sheet for the product, and maintain this information in an accessible location at the project site.	CE	SCR 107.10	Contractor	
Provide a Hazardous Spill Plan or SPCCP	CE	SCR 107.10 ECP (SCR Section I)	Contractor	
Limit construction-caused delays to 30 minutes throughout the project.	CE	SCR 156.06	Contractor	
Photograph the bridge on Route A-6 prior to construction. Take photos from each approach, on each side of the bridge as well as straight on. Photograph details of the structure—existing condition of decking, guardrails, and other details. Provide a CD or prints of the photos to Environment at least 3 days prior to redecking.	MAFB		WFLHD	

CERTIFICATION:

I hereby certify that the above documents and permits are those necessary to construct this project, that they are complete and accurate as of the date of this signature, and that copies of each are on file in the Idaho/Montana Environmental Section and are incorporated into the PS&E for this project:

Cody Jones, S. Brooks and Associates

Date

Terri L. Thomas, Environmental Manager

Date