

**FORT WORTH MEACHAM INTL** (FTW) 5 N UTC-6(-5DT) N32°49.19' W97°21.75'

DALLAS-FT. WORTH

710 B S4 FUEL 100LL, JET A, A1+ OX 1, 3 TPA—(See Remarks) LRA

COPTER

ARFF Index—See Remarks

H-6H, L-17C, A

RWY 16-34: H7501X150 (CONC-GRVD) S-80, D-100, ST-127, DT-190, DDT-350 HIRL 0.5% up N IAP, AD

RWY 16: REIL. MALSR. PAPI(P4R)—GA 3.0° TCH 56'. Pole.

RWY 34: REIL. MALSR. Rgt tfc.

RWY 17-35: H4006X75 (ASPH) S-12.5, D-50 MIRL

RWY 17 PAPI(P2L)—GA 3.75° TCH 51'. Dam. Rgt tfc.

RWY 35 PAPI(P2L)—GA 3.25° TCH 40'.

RWY 09-27: H3677X100 (ASPH) S-30, D-45, DT-60 MIRL

RWY 27: PAPI(P2R)—GA 3.0° TCH 40'. Pole.

**AIRPORT REMARKS:** Attended continuously. Birds on and in/ov arpt.

Class IV, ARFF Index A. ARFF Index B available all users all hrs.

Rwy 17-35 and Rwy 09-27 Twys B, B1, C and D west of Rwy

16-34, Twys C and M east of Twy A, Twys H, J, K South of Rwy

09-27, Twy G SE of Twy K clsd to air carrier acft with more than

30 passenger seats. Rwy 09-27 has ravelling in cracks and block

cracks spaced 5 ft apart or less. Twy K south of Rwy 09-27 clsd

to acft weighing over 12,500 lbs. Tfc pattern altitude for Rwy

17-35 1300(590), all other rwys 1500(790). Landing fee for acft

weighing over 70,000 lbs maximum landing weight.

**WEATHER DATA SOURCES:** ASOS (817) 626-5811. LAWRs.

**COMMUNICATIONS:** ATIS 120.7 UNICOM 122.95

**FORT WORTH FSS** (FTW) 122.6. TF 1-800-WX-BRIEF. NOTAM FILE FTW.

Ⓡ **RGNL APP/DEP CON** 118.1 (North) 135.975 (South)

**MEACHAM TOWER** 118.3 **GND CON** 121.9 **CLNC DEL** 124.65

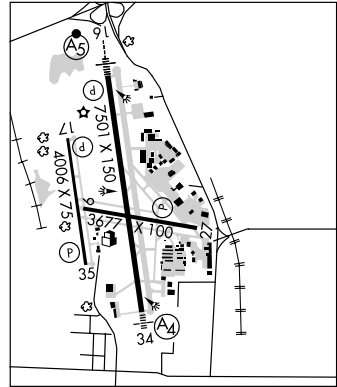
**RADIO AIDS TO NAVIGATION:** NOTAM FILE FTW.

**RANGER (H) VORTACW** 115.7 FUZ Chan 104 N32°53.37' W97°10.77' 240° 10.2 NM to fld. 637/6E.

**MUFIN NDB (LOM)** 365 FT N32°53.58' W97°22.41' 165° 4.4 NM to fld.

**ILS/DME** 109.9 I-FTW Chan 36 Rwy 16. Class IT. LOM MUFIN NDB. Back course unusable.

**ILS/DME** 109.9 I-XT Chan 36 Rwy 34.



**FORT WORTH SPINKS** (FWS) 14 S UTC-6(-5DT) N32°33.91' W97°18.49'

DALLAS-FT. WORTH

700 B S4 FUEL 100LL, JET A TPA-1700(1000)

COPTER

RWY 17R-35L: H6002X100 (ASPH) S-40, D-50, DT-90 MIRL

H-6H, L-17C, A

RWY 17R: PAPI(P4L)—GA 3.0° TCH 40'. P-line. Rgt tfc.

IAP

RWY 35L: MALSR. PAPI(P4L)—GA 3.0° TCH 52'.

RWY 17L-35R: 4000X60 (TURF)

RWY 35R: Ground Rgt tfc.

**AIRPORT REMARKS:** Attended 1400-0000Z. 24 hr FBO. 100LL self

serve 24 hr with major credit card. Birds in/ov arpt. Rotorcraft

opns rstd in self svc fuel areas. Unlgt'd antenna array 212' AGL 5

NM southeast of arpt. Rwy 17L-35R avbl only during dalgt/VFR

and dry weather surface conditions. Rwy 17L-35R reflective

markers 80' apart outline rwy. Noise abatement procedure, avoid

noise sensitive areas all quadrants of arpt, maintain altitudes at

or above 1000' AGL over these areas. ACTIVATE MALSR Rwy

35L—CTAF.

**WEATHER DATA SOURCES:** AWOS-3 120.025 (817) 426-4172.

**COMMUNICATIONS:** CTAF 124.625 UNICOM 122.7

**FORT WORTH FSS** (FTW) TF 1-800-WX-BRIEF. NOTAM FILE FWS.

Ⓡ **RGNL APP/DEP CON** 135.975

**SPINKS TOWER** 124.625 (1400-0300Z+) **GND CON** 119.475

**GCO** 121.725 (FORT WORTH CLNC and FLIGHT SERVICES)

**RADIO AIDS TO NAVIGATION:** NOTAM FILE DFW.

**RANGER (H) VORTACW** 115.7 FUZ Chan 104 N32°53.37' W97°10.77' 193° 20.5 NM to fld. 637/6E.

**ILS** 110.95 I-JZW Rwy 35L. ILS unmonitored.

