



**United States Environmental Protection Agency
Office of Enforcement and Compliance Assurance
Office of Compliance**

July 2005



The Year in Review....



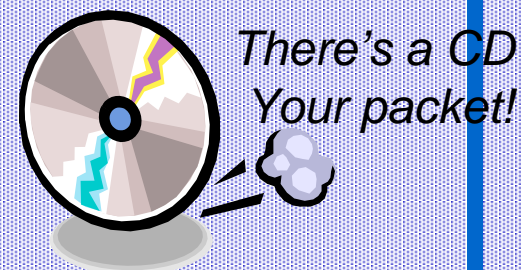
- S



AFS Business Rules Update

The Business Rules have been updated:

- New ICR requirements have been added.
- Clarification on HPV data and use of new fields added.
- Updates to the Subparts tables.





New National Action Types added to AFS....

- Optional Use action types for reporting Partial Compliance Evaluations,
- Optional use action types for starting an FCE Pathway,
- Optional use for reporting State/Local Environmental Projects,
- Federal action types to report non-applicability for MACT and NSR/PSD activities.



Additional PCE Action Types

-Optional Reporting-

- Complaint On-Site PCE: EE-EPA
PC-State
- Permit On-Site PCE: EP-EPA
PP-State
- Process Off-Site PCE: EM-EPA
PR-State
- On-Site PCE Observation: EO-EPA
PO-State



New State/Local Environmental Projects (SLP) Action Types

-Optional Reporting-

- New Action Type **SP**-State/Local Environmental Project and Costs, equivalent of Federal Supplemental Environmental Projects (SEPs).
- SLP costs are not included in the formal enforcement action assessed penalty.
- PAM1 field reflects total costs of the project including capital, direct, and operation/maintenance costs.
- Optional action type SV: SLP Generated Value.



New State/Local Environmental Projects (SLP) Action Types

-Optional Reporting-

- New Action Type **SV**-State/Local Environmental Project Generated Value (SPV).
- Used in conjunction with SP-State/Local Environmental Project and Costs.
- PAM1 field reflects project value mitigation credit as generated from the PROJECT model, or the net present after tax value.
- Date Achieved should reflect the same date of the SP action type.



New Day Zero Action Types for Tracking FCEs

-Optional Reporting-

Users can now generate a new pathway for tracking FCE components by using a series of new Action Types:

- **5E**-EPA On-Site FCE Pathway
- **5F**-EPA Off-Site FCE Pathway
- **5G**-State On-Site FCE Pathway
- **5H**-State Off-Site FCE Pathway

Note: An FCE action type will need to be added in order to report a completed FCE.



New National Action types for Federal use...

- **NA-EPA** MACT FCE/PCE Non-Applicability Determination
- **NM-EPA** MACT Non-Applicability Determination for Investigations
- **NN-EPA** NRS/PSD Non-Applicability Determination for Investigations

These action types will allow for clearer reporting of GPRA activities.

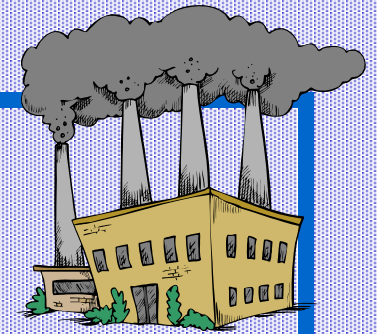


LCON Values in the CAA Extended Management Reports

- OTIS CAA Reports will allow for reporting by Local Control Agency Code.
- New LCONs can be added to the table via a request to your Regional AFS Compliance



A new acronym: SCNC



- This acronym will allow you to extract either the SIC or NAICS code when used in an ad hoc report.
- 4 Digits in the output will result in SIC code searches,
- 6 Digits in the output will result in NAICS code searches.

SCNC CE 4911 or SCNC CE 221111



New utilities...

- Enhanced action compression and renumbering utility. This utility will allow plants with actions numbering close to 999 to remove old actions and then renumber.
- The ability to copy one user's ad hoc criteria sets to another.

If you would like to use one of these utilities, please call the AFS Helpline at 800 367-1044.



New utilities...

- New bubble-up of plant classification and compliance status that excludes shut down air programs.

This utility will provide an accurate picture of operating air programs.

The utility will be run before the August IDEEA refresh of August 12th, lists of affected sources will be available by contacting the AFS Helpline at 800 367-1044.



New enhanced browse feature...

- When searching for a source in AFS using the 000 screen, a user must execute a new search every time a source is selected from the search list. This enhancement will return the user to the list of sources meeting the search criteria, along with providing the SCSC.
- *Also deletes emissions inventory information from the search screen.*

DATE : 06/29/05

AIRS FACILITY SUBSYSTEM
PLANT NAME SEARCH

PGM: AFN00001
MAP: AFM00010

=====

TAB TO SELECTION AND PRESS <ENTER>

SCSC	NAME	ADDRESS	CITY
-----	-----	-----	-----
2200100003	ADM MILLING DORE DIV	WEST MILL ST	CROWLEY
2200100010	CANAL/CHURCHPOINT	FAC/HWY 357	CHURCHPOI
2200100013	BROUSSARD RICE MILL	HWY 90 @	MERMENTAU
2200100016	CANAL/BAY DES CANNES	BARGE TERM/PAR RD41	CHURCHPOI
2200100017	TOTAL MINATOME/LAWSO	FLD/.5M W I-10 @ H1	CROWLEY
2200100022	HENSGENS GRAIN ELEVA	MILL STREET	CROWLEY
2200100028	U S REFINING/EGAN	REFINERY/I10 EXIT 7	EGAN
2200100029	ANR/EUNICE CS	HWY 190 6M WEST OF	IOTA
2200100030	CONOCO/ACADIA GAS PL	1M SOUTH OF I-10 @	EGAN
2200100031	EXXON/BLUE WATER GAS	PLT/OFF HWY 92 2.5M	MORSE
2200100032	WARREN PETROLEUM CO	HWY 92 4M SOUTH OF	MERMENTAU
2200100037	SAFETY KLEEN CROWLEY	HWY 1112 3M NORTH O	CROWLEY
2200100047	CXY/EAST RICHIE FLD	PF/HWY 755 5M SW OF	EUNICE
2200100048	VINTAGE/TEPETATE PF	SEC 28 T28 R2W	BASILE

PF3=END PF5=TERM PF7=PREV PF8=NEXT





New enhancements to the Universal Interface...

- Permit Program Data Elements now available via the UI.
- Continuous Emission Monitoring data elements available via the UI.
- Enhanced stack test reporting.
- Additional support made available to agencies wanting to review the UI.
- Multiple HPV linkages now available.



WHAT'S NEXT FOR AFS?

1. AFS Modernization Workgroup continues
2. New algorithms for generating Automatic Unknown Compliance Status, and a change from updating from daily to monthly.
3. HPV Fixed Report
4. A Utility to identify duplicate actions
5. Work will begin on an XML Schema for AFS reporting.



**Don't forget to
read your
Security
information...**

Security and you...

***A copy is in your
registration
packet!***



Things to think about...

- Next year's workshop—Denver?
San Diego? Albuquerque?
Washington, DC?
- Skip a year workshop?
- XML Workgroup will be starting.
Interested?