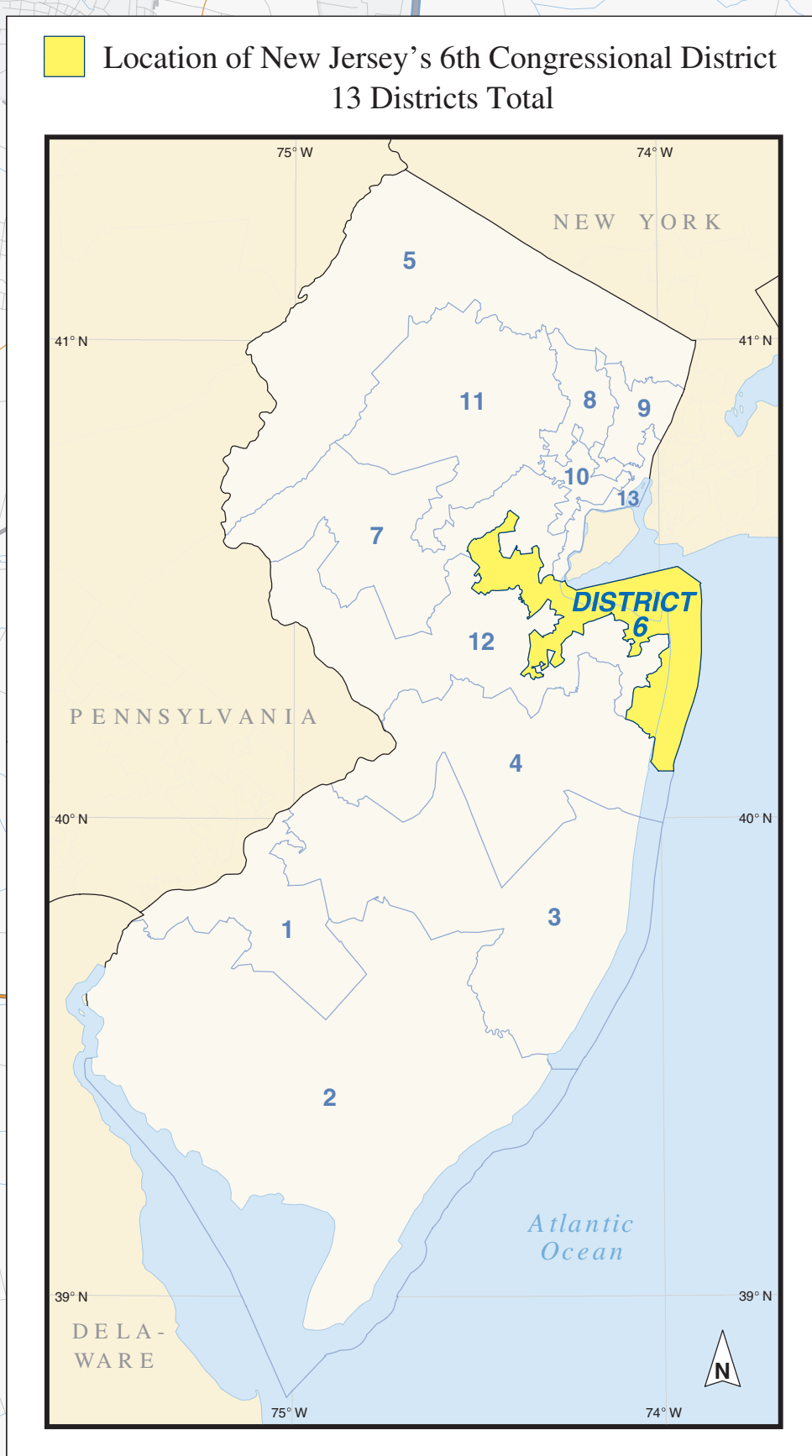
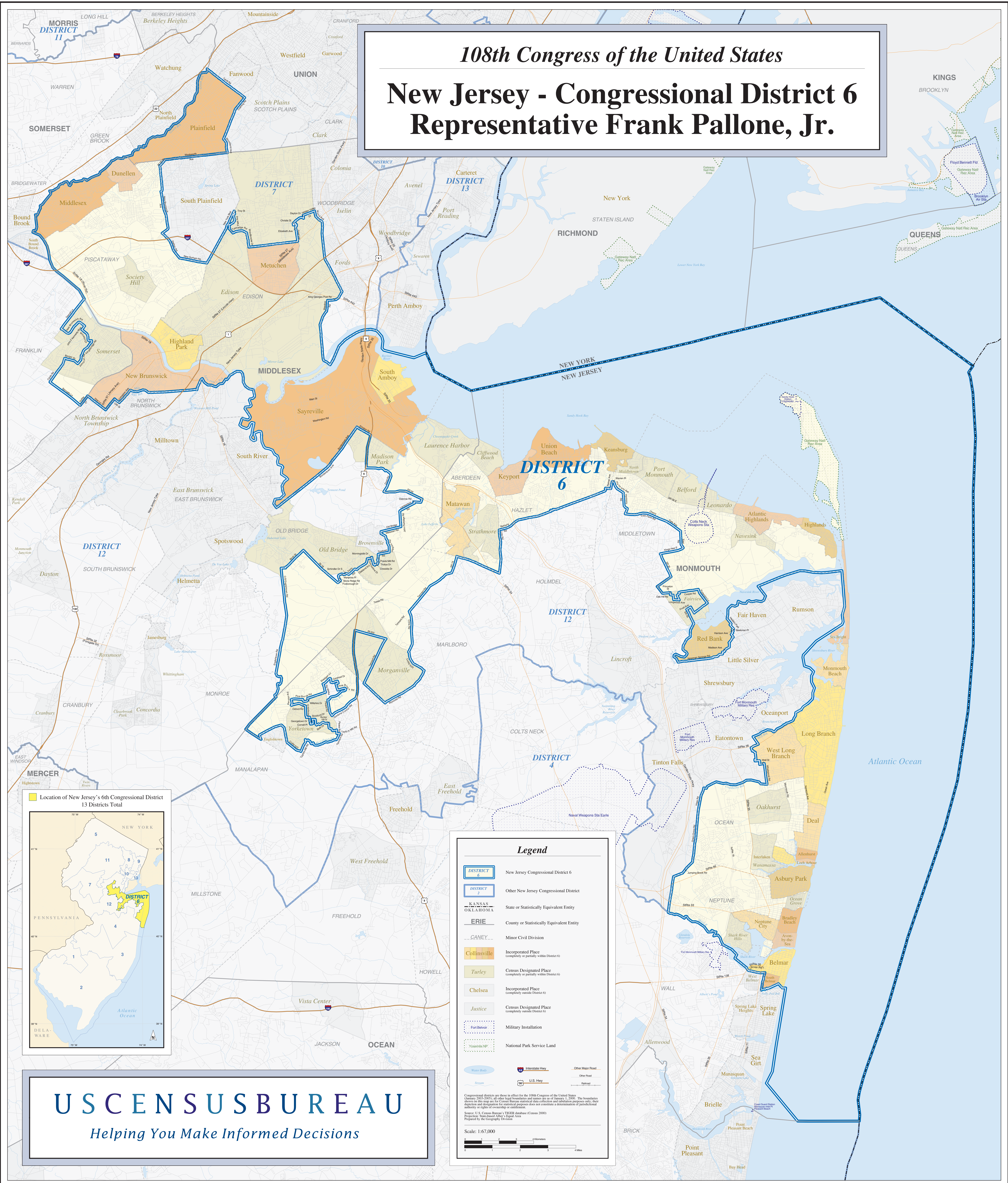


108th Congress of the United States

New Jersey - Congressional District 6

Representative Frank Pallone, Jr.



Legend

- DISTRICT 6 New Jersey Congressional District 6
- DISTRICT 2 Other New Jersey Congressional District
- KANSAS
OKLAHOMA State or Statistically Equivalent Entity
- ERIE County or Statistically Equivalent Entity
- CANEY Minor Civil Division
- Collinsville Incorporated Place (completely or partially within District 6)
- Turley Census Designated Place (completely or partially within District 6)
- Chelsea Incorporated Place (completely outside District 6)
- Justice Census Designated Place (completely outside District 6)
- Fort Belvoir Military Installation
- Yosemite NP National Park Service Land
- Water Body Water Body
- Interstate Hwy Interstate Highway
- U.S. Hwy U.S. Highway
- Other Major Road Other Major Road
- Other Road Other Road
- Railroad Railroad

Congressional districts are those in effect for the 108th Congress of the United States (January 2003-2005); all other legal boundaries and names are as of January 1, 2000. The boundaries shown on this map are for Census Bureau statistical data collection and tabulation purposes only; their depiction and utilization for statistical purposes does not constitute a determination of jurisdictional authority or rights of ownership or confidence.

Source: U.S. Census Bureau's TIGER database (Census 2000) Population, Statistical Area, Equal Area
Prepared by the Geography Division

Scale: 1:67,000

US CENSUS BUREAU
Helping You Make Informed Decisions