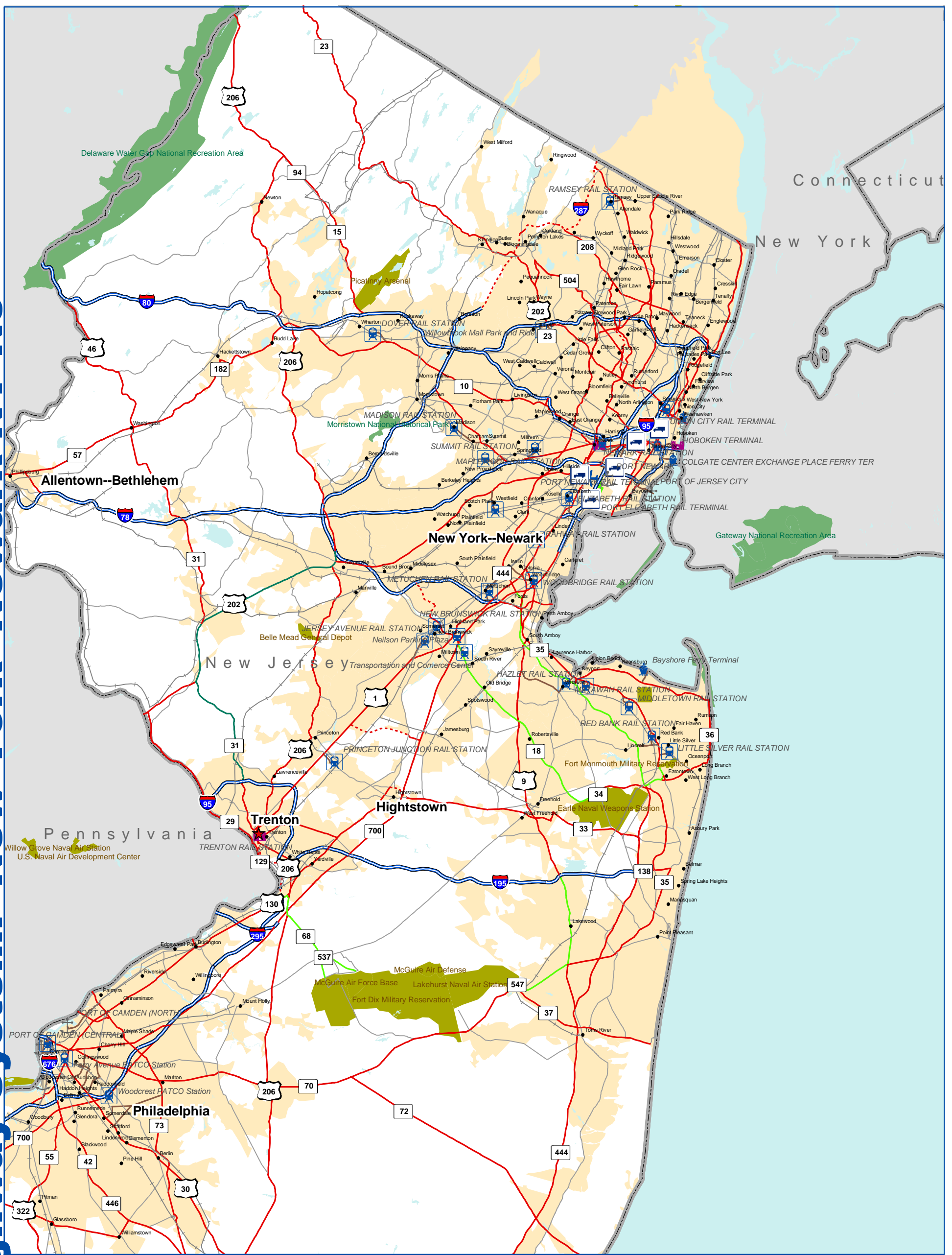


National Highway System: New York--Newark NY-NJ



**U.S. Department of Transportation
Federal Highway Administration**

	Eisenhower Interstate System		Census Urbanized Areas		Airport		Multipurpose Passenger Facility
	Other NHS Routes		Indian Reservation		Intercity Bus Terminal		Port Terminal
	Non-Interstate STRAHNET Route		Department of Defense		Ferry Terminal		Truck/Rail Facility
	Major STRAHNET Connector		National Forest		Truck/Pipeline Terminal		AMTRAK Station
	Intermodal Connector		National Park Service				Public Transit Station
	Unbuilt NHS Routes		Water	 0 10 20 Miles 0 10 20 Kilometers			
	Other Roads (not on NHS)						
	Railroad						