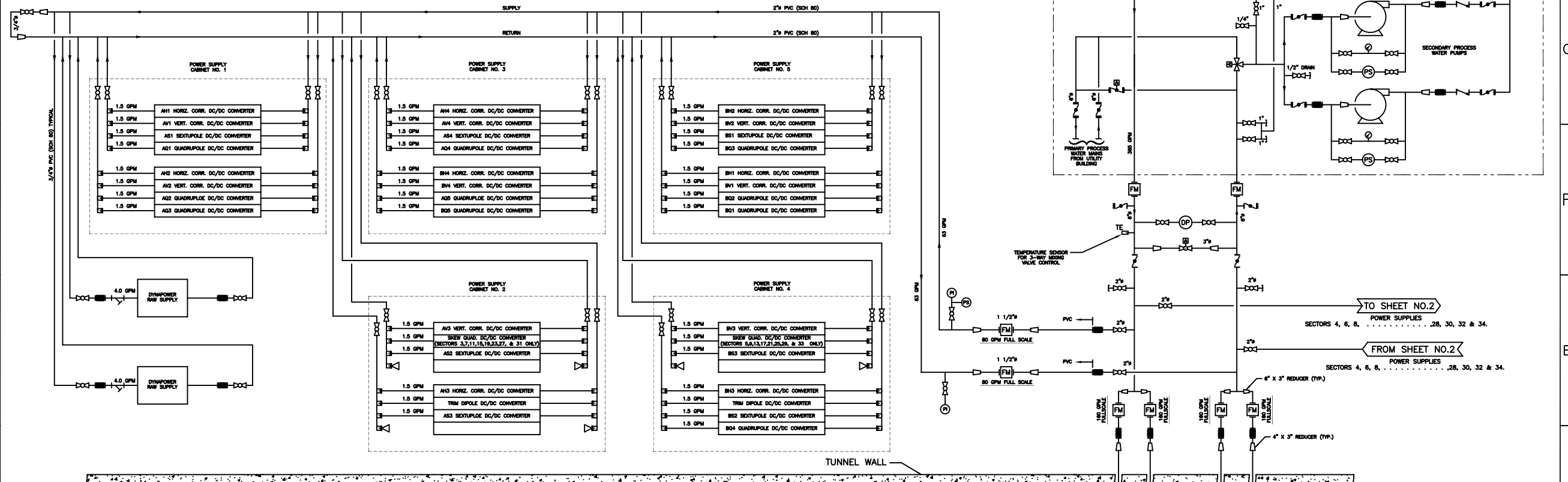


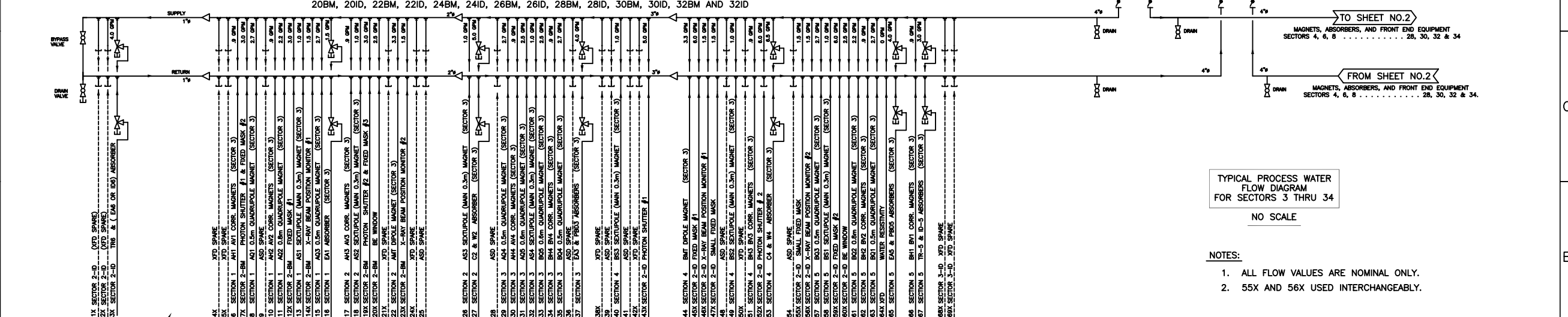
ZONE	REV	DESCRIPTION	BY	APPROVED	DATE

D.I. WATER FOR ASD POWER SUPPLIES
SECTORS 3, 5, 7, 9, 11, 13, 15, 17, 19, 21
23, 25, 27, 29, 31, AND 33

- SEE DRAWINGS
- 31-100200 31-101000
 - 31-100300 31-101100
 - 31-100400 31-101200
 - 31-100500 31-101300
 - 31-100600 31-101400
 - 31-100700 31-101500
 - 31-100800 31-101600
 - 31-100900 31-101700



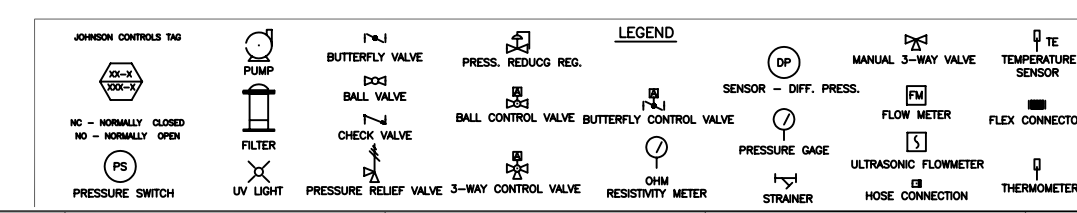
D.I. WATER FOR ASD MAGNETS AND ABSORBERS IN SECTORS
3, 5, 7, 9, 11, 13, 15, 17, 19, 21, 23, 25, 27, 29, 31 & 33
AND FOR XFD BEAM LINES 2BM, 2ID, 4BM, 4ID, 6BM, 6ID, 8BM, 8ID,
10BM, 10ID, 12BM, 12ID, 14BM, 14ID, 16BM, 16ID, 18BM, 18ID,
20BM, 20ID, 22BM, 22ID, 24BM, 24ID, 26BM, 26ID, 28BM, 28ID, 30BM, 30ID, 32BM AND 32ID



TYPICAL PROCESS WATER
FLOW DIAGRAM
FOR SECTORS 3 THRU 34
NO SCALE

- NOTES:
- ALL FLOW VALUES ARE NOMINAL ONLY.
 - 55X AND 56X USED INTERCHANGEABLY.

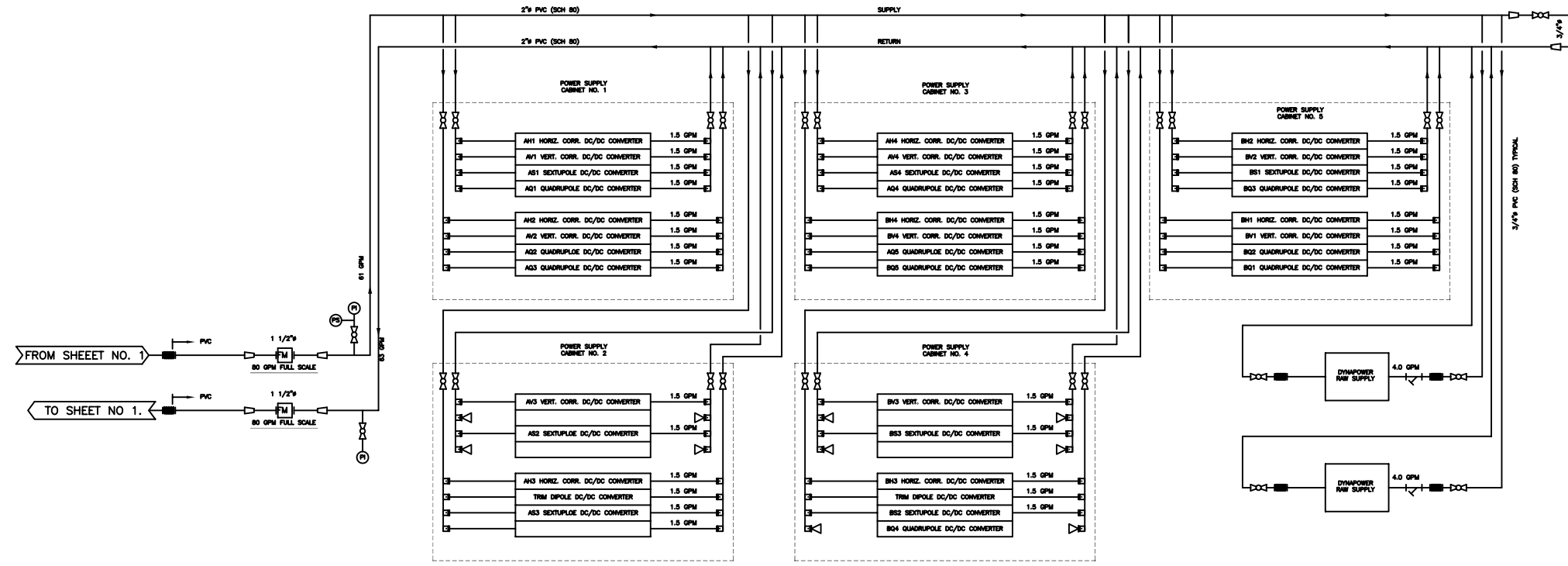
ASD AND XFD CONNECTIONS IN THIS GROUP LABELED "SECTOR 3"
ARE INTENDED TO INDICATE SECTORS 3, 5, 7, 9, 11, 13, 15, 17, 19, 21, 23, 25, 27, 29, 31, OR 33.
XFD CONNECTIONS IN THIS GROUP LABELED "SECTOR 2" ARE
INTENDED TO INDICATE COMPONENTS IN XFD SECTORS
2, 4, 6, 8, 10, 12, 14, 16, 18, 20, 22, 24, 26, 28, 30, OR 32.



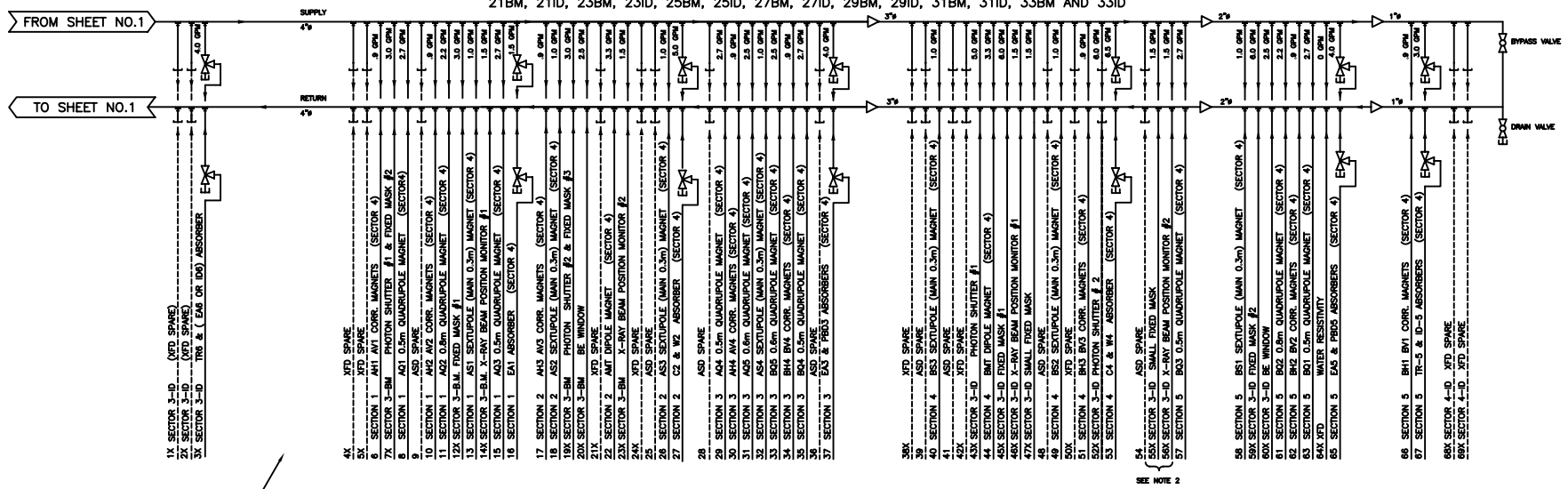
ITEM	DRAWING / PART NUMBER	NOMENCLATURE OR DESCRIPTION	MATERIAL / SPEC	QTY
PARTS LIST / BILL OF MATERIALS				
UNLESS OTHERWISE SPECIFIED, ALL DIMENSIONS ARE IN INCHES. T. GIVENSKI / HPC DATE: 03/21/96 DESIGNED BY: DATE: TITLE: PROCESS WATER FLOW DIAGRAM OF STORAGE RING FOR SECTORS 3 THRU 34 SURFACE ROUGHNESS: R. DORTWEGT DATE: 04/12/96 APPROVED BY: S. SHARMA DATE: 04/17/96 APPROVED BY: DATE: SCALE: 1:1 SHEET: 1 OF 2				
ELECTRICAL FILE NO. A2410100		OHRHS 31-103600 00		DO NOT SCALE DRAWING

REVISIONS			
NO.	REV.	DESCRIPTION	DATE

D.I. WATER FOR ASD POWER SUPPLIES
SECTORS 4, 6, 8, 10, 12, 14, 16, 18, 20, 22
24, 26, 28, 30, 32 AND 34



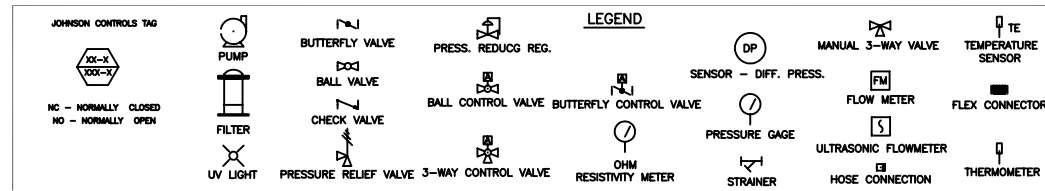
D.I. WATER FOR ASD MAGNETS AND ABSORBERS IN SECTORS
4, 6, 8, 10, 12, 14, 16, 18, 20, 22, 24, 26, 28, 30, 32 & 34
AND FOR XFD BEAM LINES 3BM, 3ID, 5BM, 5ID, 7BM, 7ID, 9BM, 9ID
11BM, 11ID, 13BM, 13ID, 15BM, 15ID, 17BM, 17ID, 19BM, 19ID,
21BM, 21ID, 23BM, 23ID, 25BM, 25ID, 27BM, 27ID, 29BM, 29ID, 31BM, 31ID, 33BM AND 33ID



TYPICAL PROCESS WATER
FLOW DIAGRAM
FOR SECTORS 3 THRU 34
NO SCALE

- NOTES:
1. ALL FLOW VALUES ARE NOMINAL ONLY.
 2. 55X AND 56X USED INTERCHANGEABLY.

ASD AND XFD CONNECTIONS IN THIS GROUP LABELED "SECTOR 4"
ARE INTENDED TO INDICATE SECTORS 4, 6, 8, 30, 32 OR 34.
XFD CONNECTIONS IN THIS GROUP LABELED "SECTOR 3" ARE
INTENDED TO INDICATE COMPONENTS IN XFD SECTORS
3, 5, 7, 29, 31 OR 33.



ITEM	DRAWING / PART NUMBER	NOMENCLATURE OR DESCRIPTION	MATERIAL / SPEC	QTY
PARTS LIST / BILL OF MATERIALS				
<small>ALL DIMENSIONS UNLESS OTHERWISE SPECIFIED ARE IN INCHES UNLESS OTHERWISE SPECIFIED ALL DIMENSIONS ARE IN METERS UNLESS OTHERWISE SPECIFIED</small>				
<small>DESIGNED BY</small> T. GONSKI / IPC <small>CHECKED BY</small> R. DORTWEGT <small>DATE</small> 04/12/96 <small>APPROVED BY</small> S. SHARMA <small>DATE</small> 04/17/96		<small>DATE</small> 03/21/96 <small>SCALE</small> 1:1 <small>PROJECT</small> ARGONNE NATIONAL LABORATORY ADVANCED PHOTON SOURCE <small>TITLE</small> PROCESS WATER FLOW DIAGRAM OF STORAGE RING FOR SECTORS 3 THRU 34 <small>REV. FROM NO.</small> E OHRHS <small>ISSUE NUMBER</small> 31-103600 <small>SCALE</small> 1:1 <small>SHEET</small> 2 OF 2		