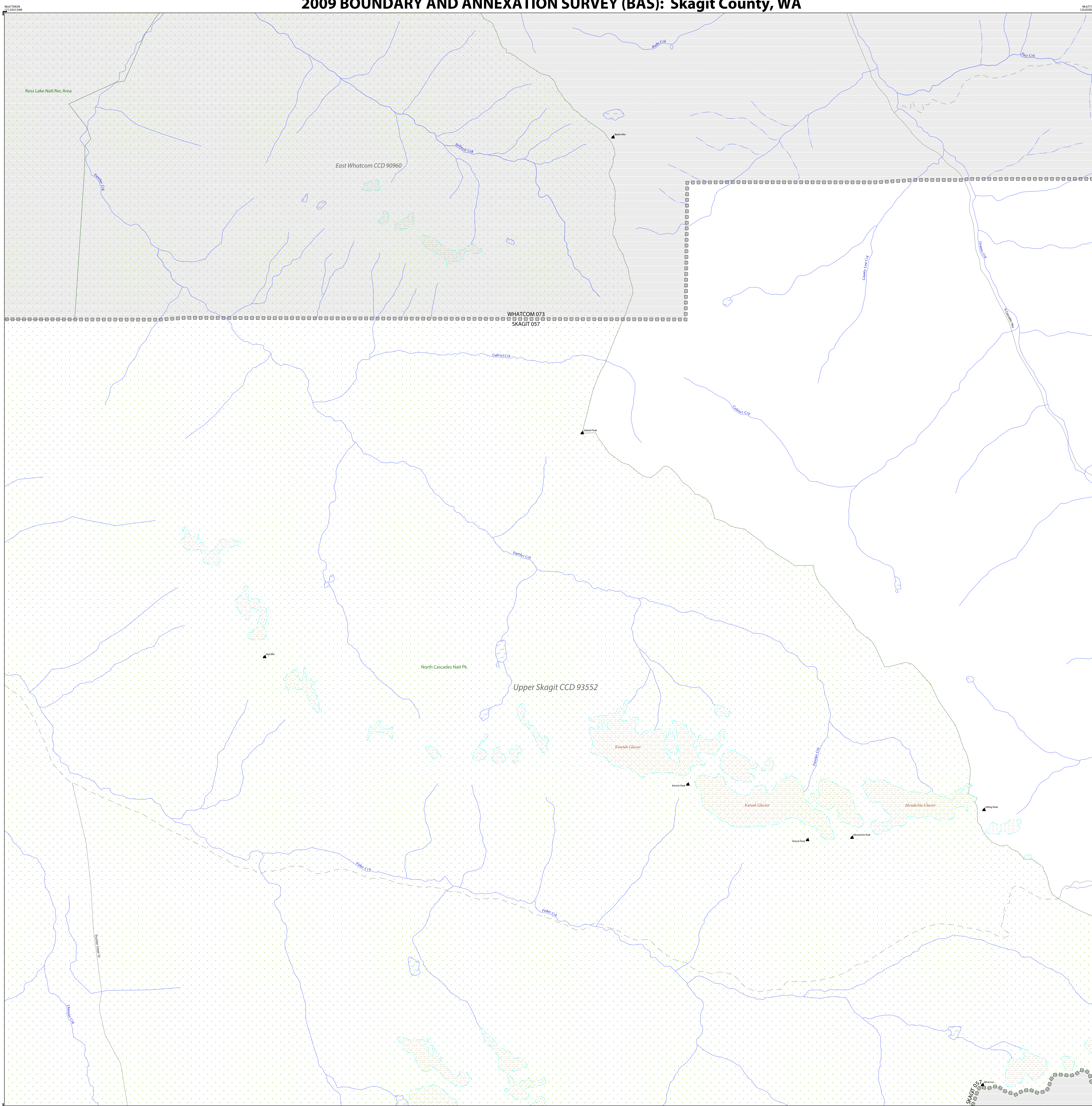


2009 BOUNDARY AND ANNEXATION SURVEY (BAS): Skagit County, WA



2009 BAS MAP LEGEND

SYMBOL DESCRIPTION	SYMBOL	LABEL STYLE
Federal American Indian Reservation	*****	L'ANSE RESERVATION (TA 1880)
Off-Reservation Trust Land	+ + + + +	T1880
American Indian Tribal Subdivision	● ● ● ● ●	SHONTO (620)
Alaska Native Regional Corporation	▼ ▼ ▼ ▼ ▼	NANA ANRC 52120
American Indian Area (Hill)	□ □ □ □ □	
State (or statistically equivalent entity)	▨ ▨ ▨ ▨ ▨	NEW YORK 36
County (or statistically equivalent entity)	▣ ▣ ▣ ▣ ▣	ERIE 029
Minor Civil Division (MCD) ¹	○ ○ ○ ○ ○	Lee town 41460
Census County Division (CCD) ²	○ ○ ○ ○ ○	Jemez CCD 91650
Consolidated City	○ ○ ○ ○ ○	MILFORD 47500
Incorporated Place ³	○ ○ ○ ○ ○	Davis 18100
Census Designated Place (CDP) ²	○ ○ ○ ○ ○	Cochiti 16560

DESCRIPTION	SYMBOL	DESCRIPTION	SYMBOL
Interstate	— 1 —	Geographic Other and Corridor	— 1 —
U.S. Highway	— 2 —	Water Body	— 1 —
State Highway	— 3 —	Swamp or Marsh	— 1 —
Other Road ⁴	— 4 —	Marsh Ln	— 1 —
Cal-de-sec	— 5 —	Glacier	— 1 —
Circle	— 6 —	Airport	— 1 —
Address Range Break ⁵	— 7 —	Cemetery	— 1 —
4WD Trail, Walkway, Stairway, or Ferry	— 8 —	Golf Course	— 1 —
Railroad	— 9 —	Military	— 1 —
Pipeline or Power Line	— 10 —	National Park or Forest	— 1 —
Ridge or Fence	— 11 —	Other Park	— 1 —
Property Line	— 12 —	Mountain Peak	— 1 —
Nonvisible Boundary or Feature Not Elsewhere Classified	— 13 —	Inset Area	— 1 —
Perennial Stream	— 14 —	Outside Subject Area	— 1 —
Intermittent Stream	— 15 —		

Where state, county, and/or MCD/CCD boundaries coincide, the map shows the boundary symbol for only the highest-ranking of these boundaries. Where American Indian reservation and American Indian tribal subdivision boundaries coincide, the map shows only the American Indian reservation boundaries.

1 "MCD" indicates a false MCD. These are for Census use only.
 2 The CCD and CDP boundaries represent statistical entities only. They are not to be updated through the BAS.
 3 Incorporated place name color correlates to the incorporated place fill color.
 4 Due to space limitations, some road names, along with other feature and geography names on the map, may not be shown.
 5 Address range break values represent the last address stored in the MAF/TIGER database for each street that crosses the boundary of your jurisdiction.

SIGNATURE BOX

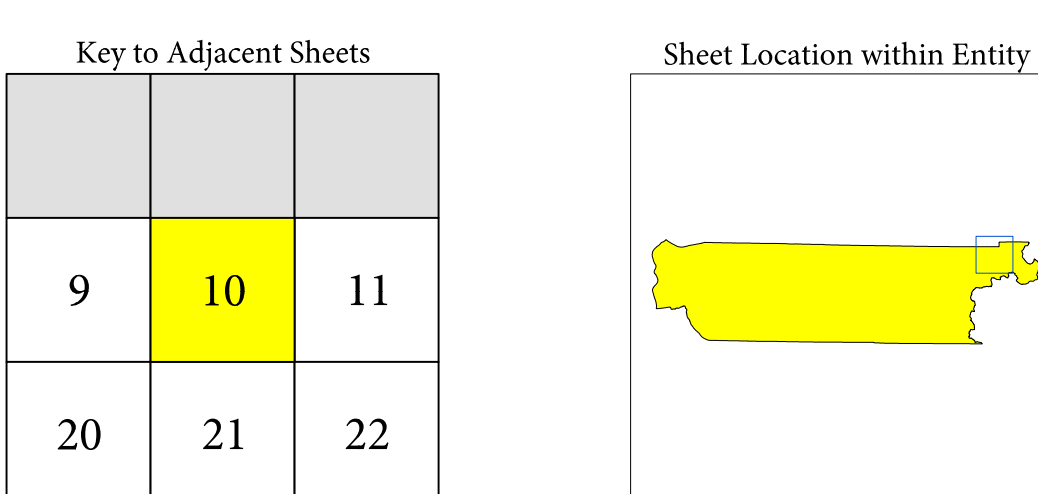
The corrected boundaries shown on the map are accurate as of January 1, 2009.

Print Name: _____

Position: _____

Signature: _____

Telephone: _____ Date: _____

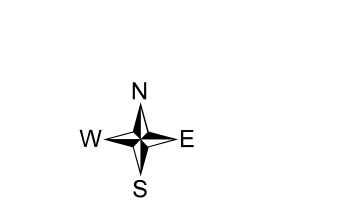
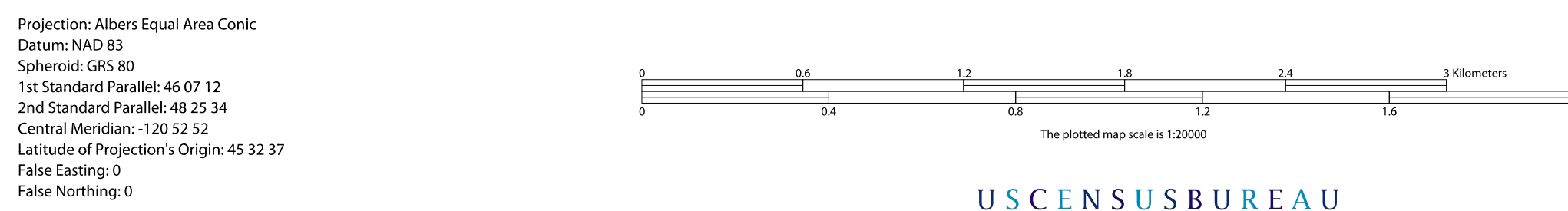


Sheet 10 of 31 PARENT sheets
 Total Sheets: 37 (Index 1; Parent 31; Inset 5)

NAME: Skagit County (057)
 ENTITY TYPE: County or statistically equivalent entity
 ST: Washington (53)

All legal boundaries and names reported through the 2008 BAS. The boundaries shown on this map are for Census Bureau statistical data collection and tabulation purposes only; their depiction and designation for statistical purposes does not constitute a determination of jurisdictional authority or rights of ownership or entitlement.

Source: U.S. Census Bureau's MAF/TIGER database (BAS09E12740)
 Created by Geography Division: 22-OCT-08
 U.S. DEPARTMENT OF COMMERCE Economics and Statistics Administration U.S. Census Bureau



The Census Bureau has completed nationwide spatial enhancements through the MAF/TIGER Accuracy Improvement Project (MTAIP). These enhancements may have inadvertently introduced changes to the shape of your boundary. Please review your maps carefully and make corrections where needed.

If data outside of your entity is not shown on this map, you may request map coverage by calling 1-800-972-3651 or emailing geo.bas@census.gov.

