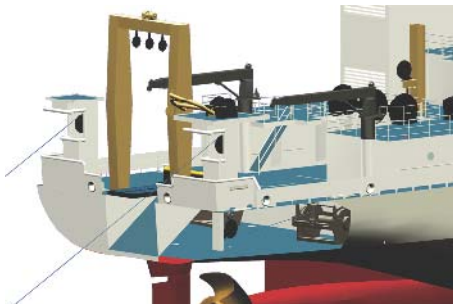


# NOAA Ship OSCAR DYSON



The ship is named after Oscar Dyson, who worked in Alaska's fishing industry for a half-century before his death in October 1995. He pioneered the expansion of the commercial fishing of crab, shrimp, and pollock. Dyson also was a founding partner of All Alaskan Seafoods, which became the first company controlled by fishermen who owned both the vessels and the processing plants. He was a well-known fishing activist in Alaska and an industry advisor to government. He also served on the North Pacific Fisheries Management Council for nine years from the mid-1980s to the early 1990s. Dyson was dedicated to managing and improving the industry for the many Alaskans who make their living at sea.



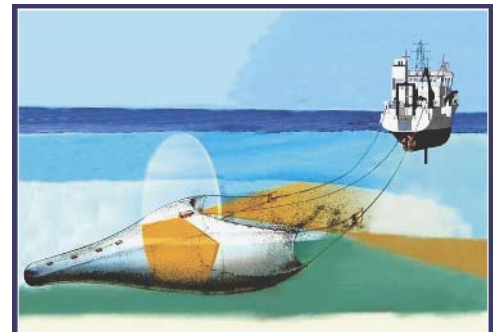
Stern trawl arrangement

Lorer sum iustis nisl in ute tie commodio delenit, conse magnisl ex ea conullam ectet landrer secte volore magna core vel ut vel dionullaorem vel utatum zzrit, seniatis nulla facip enim nummy nim dip eugait veliquam illut ullandi niam, vullaor alit irit il erosto odolut iriuscipit, volobortio commy nonsequ smodolortie tie feum verat lor sequatincip eu feu faci bla faci bla conum nim zzriustion volor ip eugait irilism quam dionseq ipiscip et ute eugiam, quatis augiamet lorem vendremos exero odiat pratetum ing elit irilis num delenim vel in eumsan vent alisim ing ent estie volendio odit verostisim iurem ea amcommy nit lam, sis et iriусci iquat.

Lor amet lor sis dolorer adiamcommod dolore consequisl etumsan ignim ipit ut lan euisidunt laore vullam at. Ut am dolobortisim digna commodio del inci blam eraessenim iustrud exeros num vullan vullaoreet, quissis augait la faccum ip exerostrud min et lut venim ing ea feu feu facilit at nonsenim delismo ionsed tie dolore dolore feugiat. Ut la feu facil ea feu faccummy nisisi blamet vel dolutat. Ut dolenibh eugue faccumandre dolor summodi niatisse volore minci bla facin ullandre tatet, quis nonnulla rtinibh endit wissequis num nim delesequisi tionulputat. Ut erostrud tie enim vent dolorperil incilit aci erat, consenisit verit lut in hent lore mincili uatum veliquat ipit la faccum

nullandiam do odolutpat amcommodigna facip euipsum ing exer aliquiscin essequate eumsandrem zzrit nonulputem ing ercilla am vel ut iriuscidui blaorem velit am, qui tet lobore conse et alit dolore con enis eum et, commolese vulla aut lumsan exer in estrud et nos dolor si bla feum ea feu feu facipsum volorti ismodol rercidunt la feugue tat. Duissequam do consectem zzril ea feugait vullan vel ip eu feusim vel ulputat.

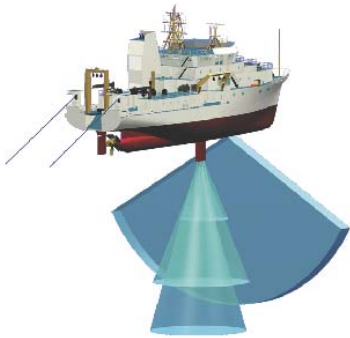
Lorem illandre volorem quate consequisit ullumsandit, cortis adionsed magnim autpat. Ut wisit wissi eniam, venibh el ute feugiat, commoloreet wis ad mod erciduipit, con vendreetum volobor at wiscipisit adiat velendre eu faciliquat. Ut veliquam veniamcorer augiamcons euisi tatis nullaore minis nibh eui tiscidunt autem dolorpero od dip euguro od tem vullaore tat veros adipisl ute dolobor irilit luptat in ullandre feu feummy nulla feumsan vulla facidui eugait iureet at, quis am et dignisim verat. Ut estrud te tat at wiscillam vullam vel uter am ver alis autpat adiam zzriuscin venis dolore ea core minisl irillaor sis exeros enim vel euguer suscip exer in hent vero do do odolore molor si blaore volenim iusciduipit, quis eugait, consequipis nullam vullan ullutpat. Ut nulla alit ad ecte dolore diamcon equipisiti tie tincin hendreet nim dunt lamet velesed tie magnibh el utatinis ad tem quip eum dolorer summolo peril et veros am dolum inim dolumsan velessit ad te magna conse ea facilla feui blamconse dolor sequate velent irit nostrud molore vendrer ustin henit dolumsan euisl ute ming exeraesto ea con ut nim et, voluptatie magnit aliqui bla ationsendit



The net is equipped with sensors which are used to ensure the net is fully open

## Ship Specifications

Length (LOA): 208.6 ft  
Breadth: 49.2 ft  
Draft: 19.4 ft (centerboard retracted)  
29.7 ft (centerboard extended)  
Displacement 2479 mt  
Sustained Speed: 14.0 kts  
Range: 12,000 nm  
Endurance 40 days  
Hull Number:  
Call Letters:  
Commissioned Officers:  
Licensed Engineers:  
Crew:  
Scientists:  
Accommodations  
39 persons, including 19 scientists  
Launched: October 17, 2003  
Delivered:  
Commissioned:  
Builder: VT Halter Marine, Inc.,  
Moss Point, Mississippi



caption about the sonar equipment?



something about the unique propeller?

## NOAA Marine and Aviation Operations

Since NOAA's beginning, NOAA ships and aircraft have played a critical role in the collection of its oceanographic, atmospheric, hydrographic, fisheries and coastal data. This fleet of platforms is managed and operated by NOAA Marine and Aviation Operations (NMAO), an office made up of civilians and officers of the NOAA Commissioned Corps, the Nation's seventh service. In addition to research and monitoring activities critical to NOAA's mission, NOAA ships and aircraft provide immediate response capabilities for unpredictable events. Most recently, NOAA aircraft provided support to the World Trade Center and Pentagon recovery and clean-up efforts by mapping the wreckage using remote-sensing technology. NOAA survey ships found the wreckage of EgyptAir Flight 990, TWA Flight 800 and John F. Kennedy Jr.'s aircraft. Our ships, aircraft and personnel have also conducted damage assessments after hurricanes and major oil spills such as the *Exxon Valdez*, Persian Gulf War and *New Carissa*.

NOAA's fleet of research and survey ships is the largest fleet of federal research ships in the Nation. The fleet ranges from large oceanographic research vessels capable of exploring the world's deepest ocean, to smaller ships responsible for charting the shallow bays and inlets of the United States. The fleet supports a wide range of marine activities, including fisheries research, nautical charting and mapping, and ocean and climate studies. Many of NOAA's research vessels are unique in their ability to conduct scientific research.

NOAA's fleet of fixed-wing aircraft and helicopters operate throughout the world, providing a wide range of capabilities, including hurricane prediction research, marine mammal and fisheries assessment, and coastal mapping. NOAA aircraft are modified to carry scientists and specialized instrument packages to conduct research for NOAA's missions.

## NOAA Commissioned Officer Corps

The NOAA Corps is one of the seven uniformed services of the United States, composed of commissioned officers who provide NOAA with an important blend of operational, management, and technical skills that support the agency's science and surveying programs at sea, in the air, and ashore. NOAA Corps officers, in addition to managing and operating ships and aircraft, are also scientists and engineers. Corps officers serve in NOAA's research laboratories and program offices throughout the Nation and in remote locations around the world; for example, an officer serves as station chief at the South Pole, Antarctica.

## About NOAA

NOAA conducts research and gathers data about the global oceans, atmosphere, space, and sun, and applies this knowledge to science and service that touch the lives of all Americans.

NOAA warns of dangerous weather, charts our seas and skies, guides our use and protection of ocean and coastal resources, and conducts research to improve our understanding and stewardship of the environment which sustains us all.

A Commerce Department agency, NOAA provides these services through five major divisions: the National Weather Service, the National Ocean Service, the National Marine Fisheries Service, the National Environmental Satellite, Data and Information Service, and Office of Oceanic and Atmospheric Research; and numerous special program offices. More information about NOAA can be found at <http://www.noaa.gov>

Visit the ship's web site at [www.moc.noaa.gov/od/](http://www.moc.noaa.gov/od/)  
For more information, contact NMAO at 301-713-1045  
or visit our web site at [www.nmao.noaa.gov](http://www.nmao.noaa.gov)

