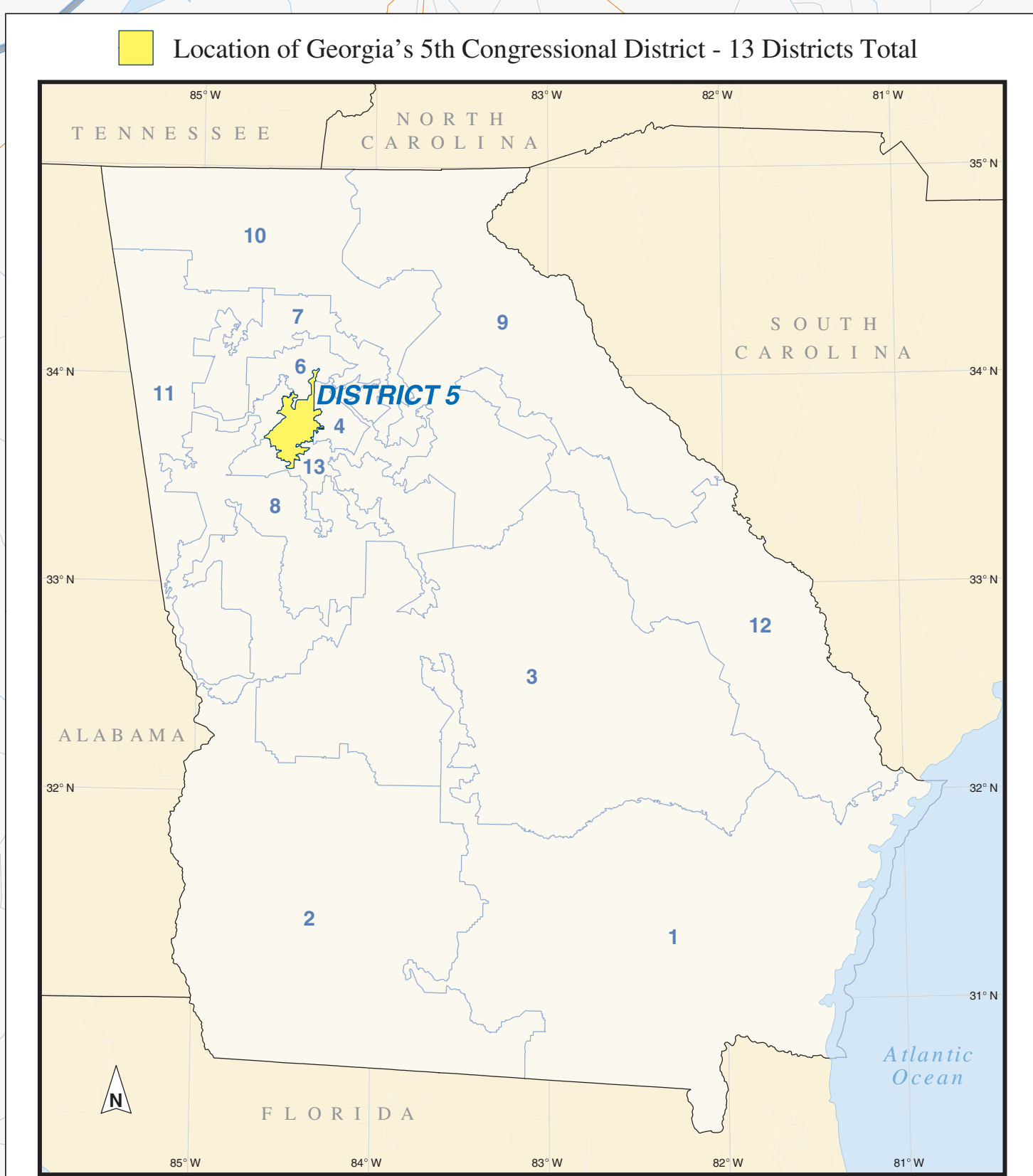
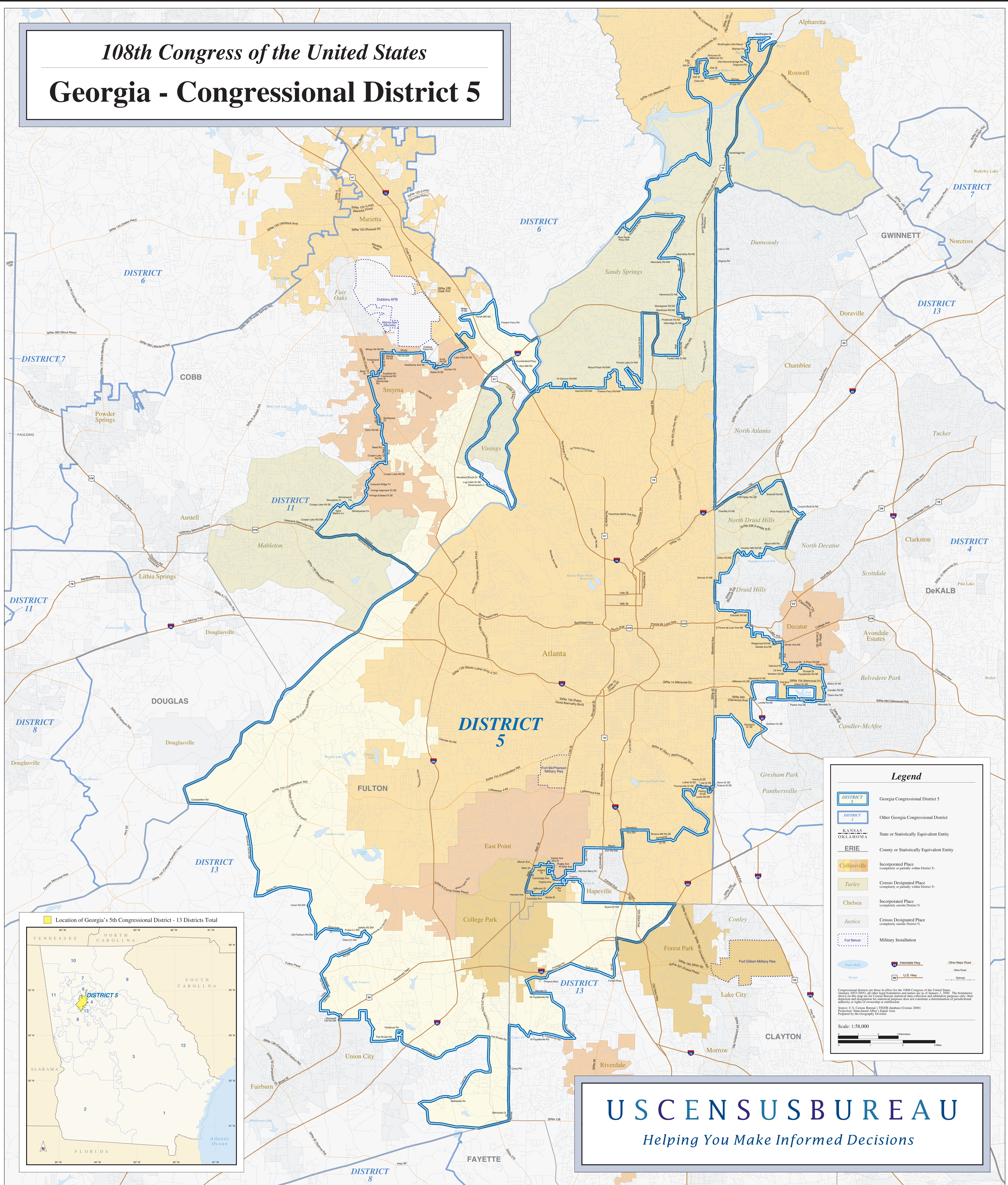


108th Congress of the United States

Georgia - Congressional District 5



Legend

- DISTRICT 5 Georgia Congressional District 5
- DISTRICT 2 Other Georgia Congressional District
- KANSAS OKLAHOMA State or Statistically Equivalent Entity
- ERIE County or Statistically Equivalent Entity
- Collinsville Incorporated Place (completely or partially within District 5)
- Turley Census Designated Place (completely or partially within District 5)
- Chelsea Incorporated Place (completely outside District 5)
- Justice Census Designated Place (completely outside District 5)
- Fort Benning Military Installation
- Water Body Water Body
- Stream Stream
- Interstate Hwy Interstate Hwy
- U.S. Hwy U.S. Hwy
- Other Major Road Other Major Road
- Other Road Other Road
- Railroad Railroad

Congressional districts are those in effect for the 108th Congress of the United States (January 2003-2005); all other legal boundaries and names are as of January 1, 2000. The boundaries shown on this map are for Census Bureau statistical data collection and tabulating purposes only; their authority or rights of ownership or jurisdiction are not guaranteed by the Census Bureau. Source: U.S. Census Bureau's TIGER database (Census 2000) Projection: Statewide Other: Equal Area Prepared by the Geography Division

Scale: 1:58,000

USCENSUSBUREAU
Helping You Make Informed Decisions