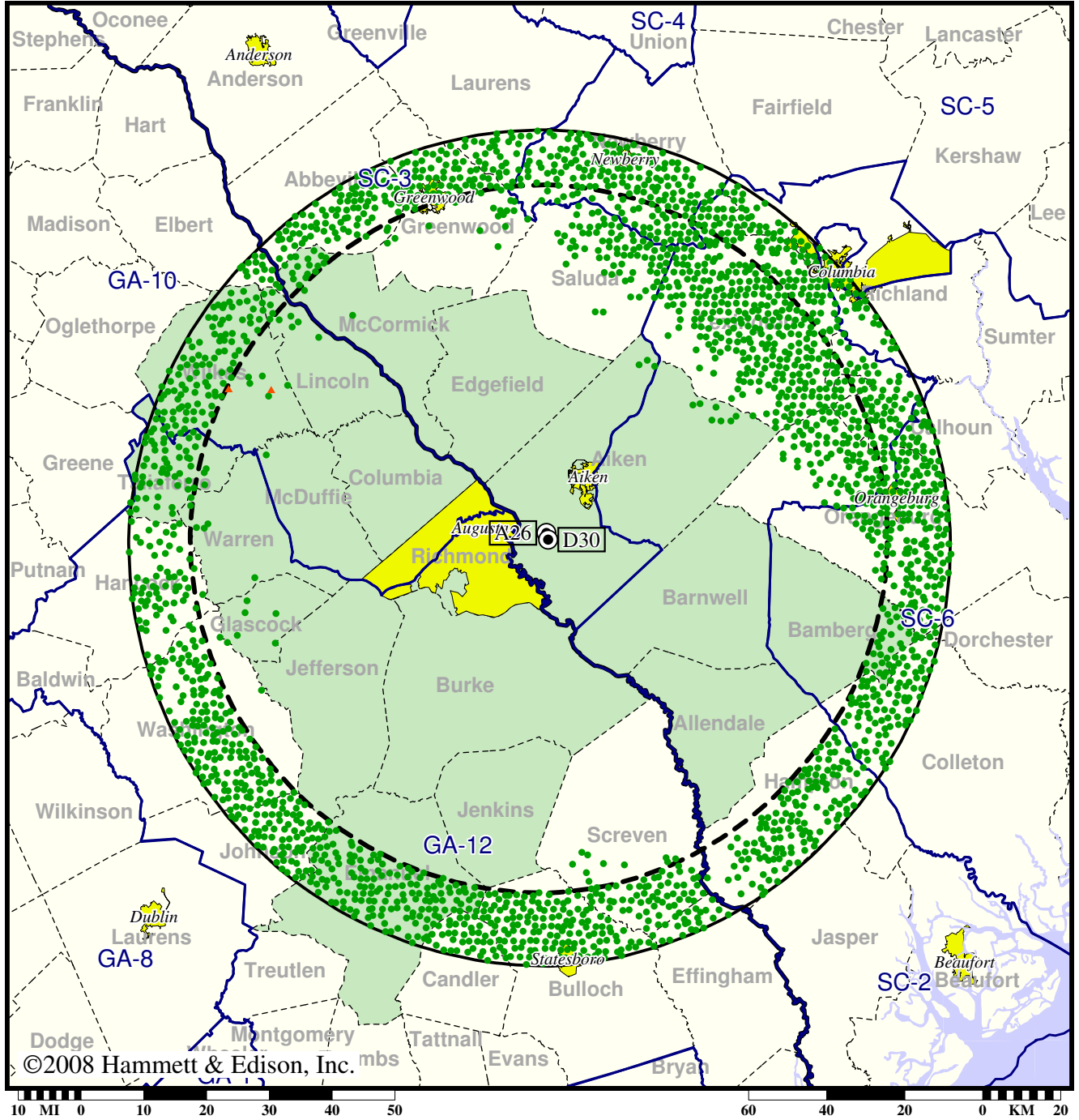


TV Station WAGT • Analog Channel 26, DTV Channel 30 • Augusta, GA

Expected Change In Coverage: Licensed Operation

Licensed (solid): 400 kW ERP at 483 m HAAT, Network: NBC
vs. Analog (dashed): 1700 kW ERP at 485 m HAAT, Network: NBC

Market: Augusta, GA



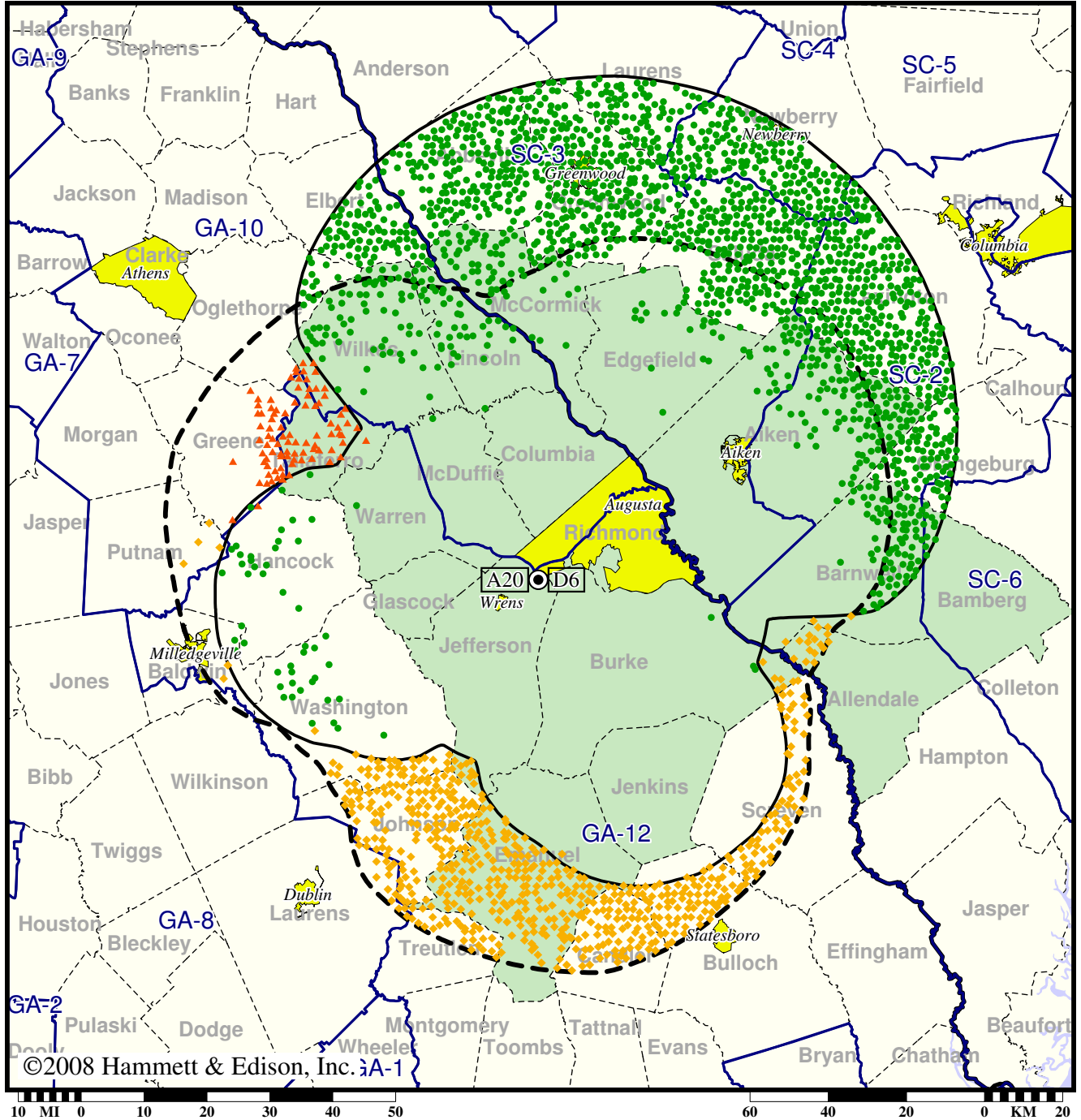
- Coverage gained after DTV transition
- (no symbol) No change in coverage
- ▲ Coverage lost after DTV transition

Station WCES-TV • Analog Channel 20, DTV Channel 6 • Wrens, GA

Expected Change In Coverage: Granted Construction Permit

CP (solid): 45.0 kW ERP at 429 m HAAT, Network: PBS
vs. Analog (dashed): 4790 kW ERP at 452 m HAAT, Network: PBS

Market: Augusta, GA



©2008 Hammett & Edison, Inc. A-1

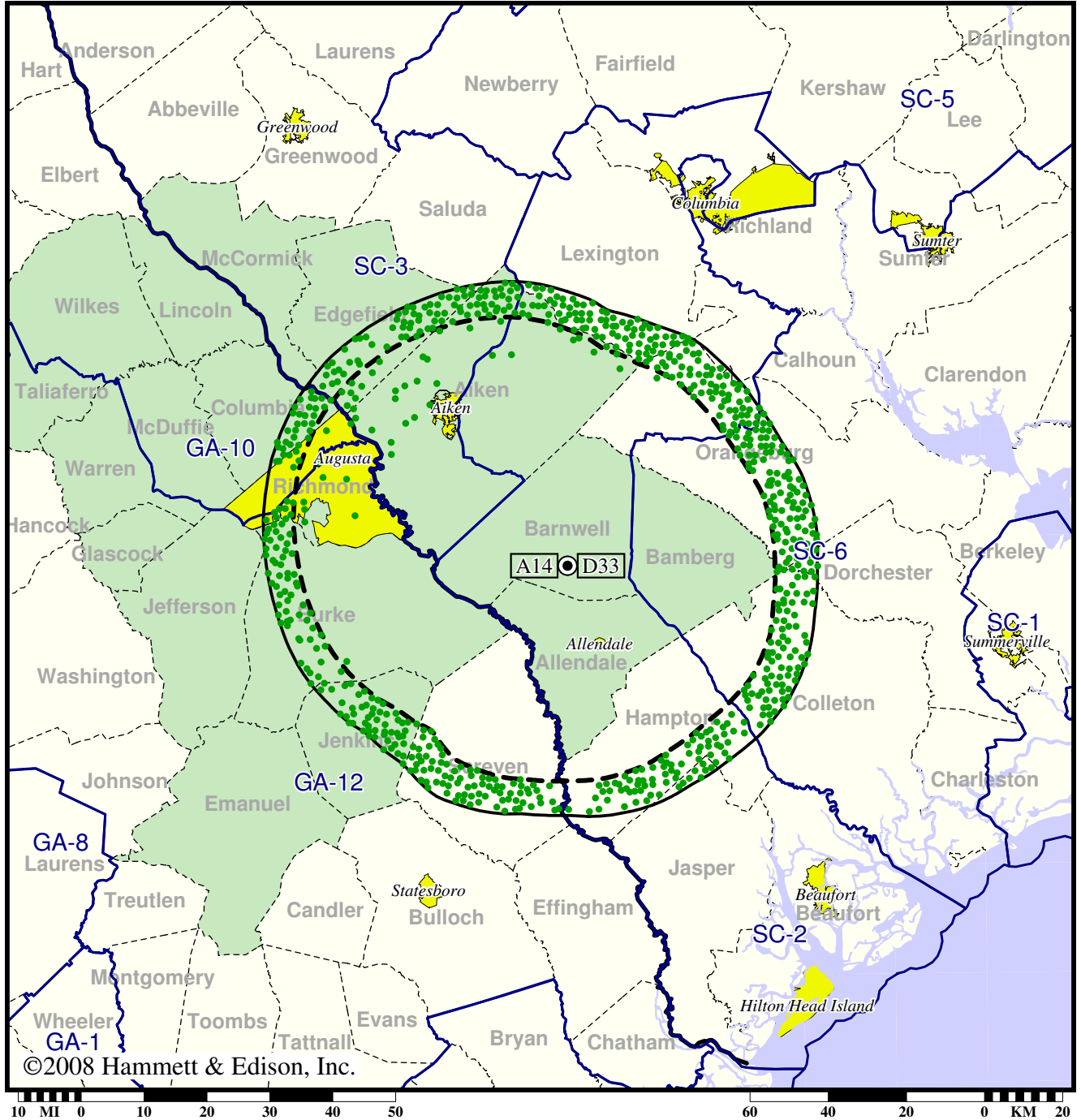
- Coverage gained after DTV transition
- (no symbol) No change in coverage
- ◆ Coverage lost but still served by same network
- ▲ Coverage lost and no other service by same network

Station WEBA-TV • Analog Channel 14, DTV Channel 33 • Allendale, SC

Expected Change In Coverage: Licensed Operation

Licensed (solid): 427 kW ERP at 241 m HAAT, Network: PBS
vs. Analog (dashed): 2307 kW ERP at 241 m HAAT, Network: PBS

Market: Augusta, GA



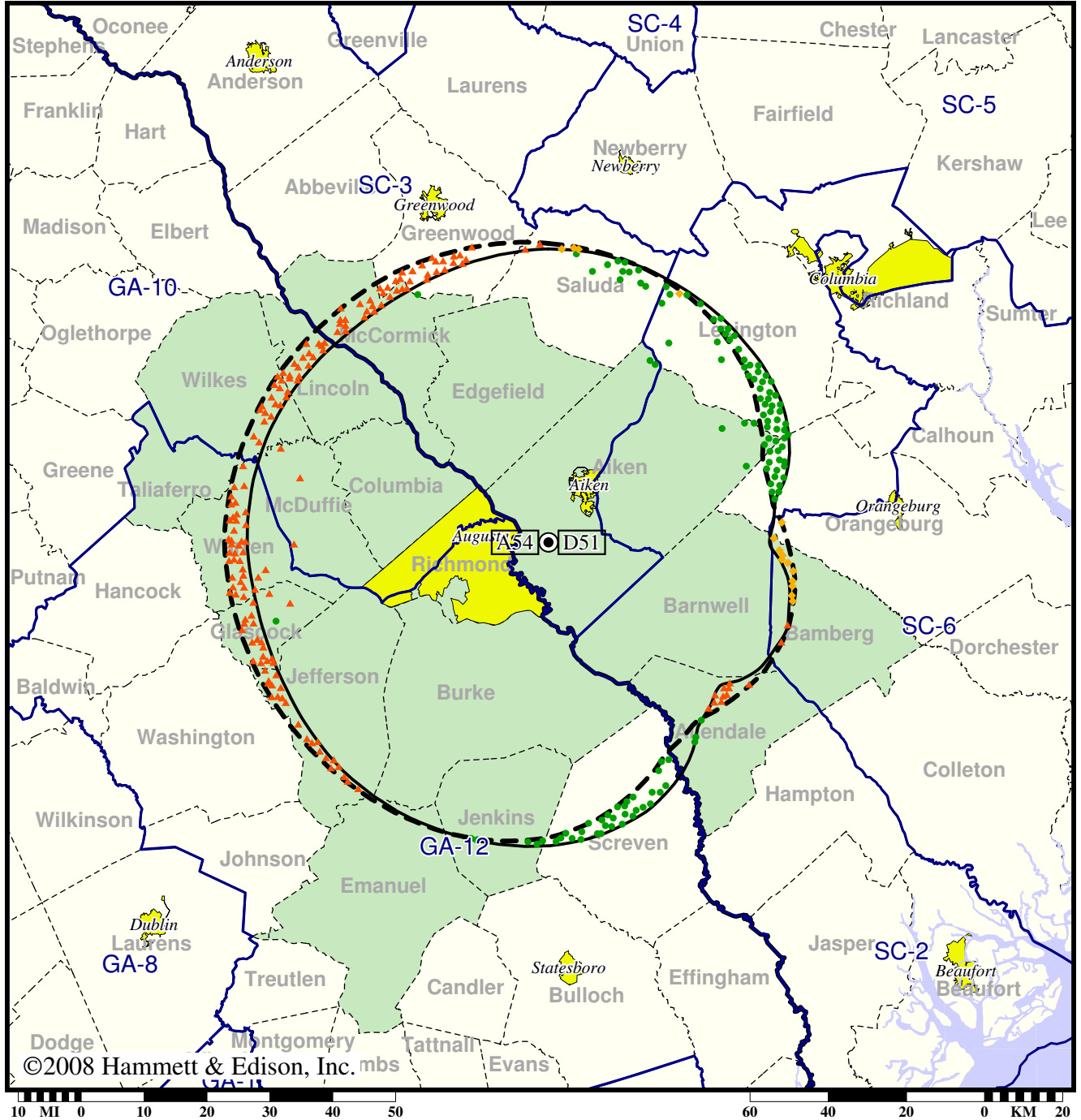
- Coverage gained after DTV transition
- (no symbol) No change in coverage

TV Station WFXG • Analog Channel 54, DTV Channel 51 • Augusta, GA

Expected Change In Coverage: Granted Construction Permit

CP (solid): 37.0 kW ERP at 363 m HAAT, Network: Fox
vs. Analog (dashed): 2510 kW ERP at 385 m HAAT, Network: Fox

Market: Augusta, GA

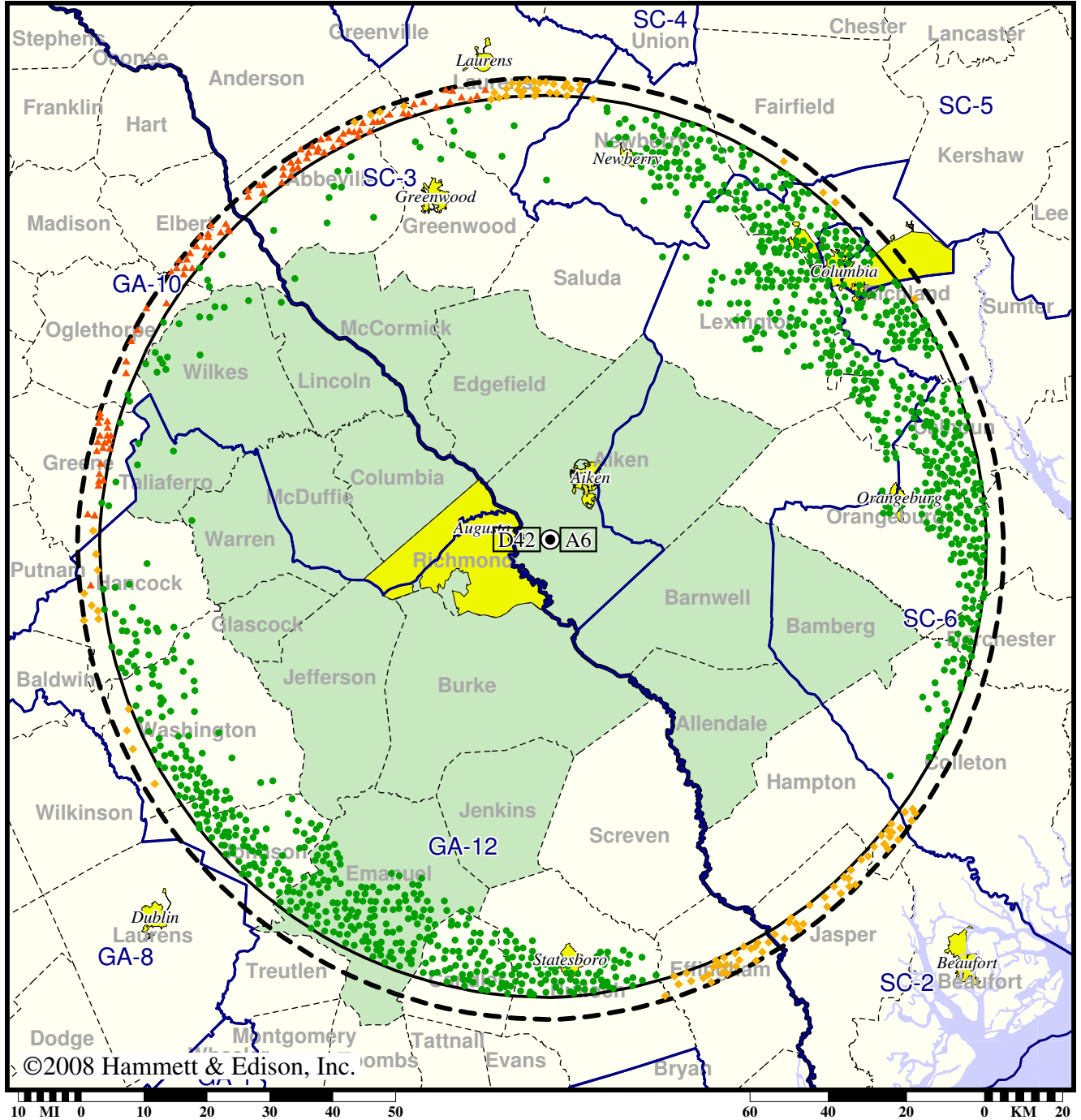


TV Station WJBF • Analog Channel 6, DTV Channel 42 • Augusta, GA

Expected Change In Coverage: Licensed Operation

Licensed (solid): 1000 kW ERP at 507 m HAAT, Network: ABC
vs. Analog (dashed): 100 kW ERP at 495 m HAAT, Network: ABC

Market: Augusta, GA



©2008 Hammett & Edison, Inc.

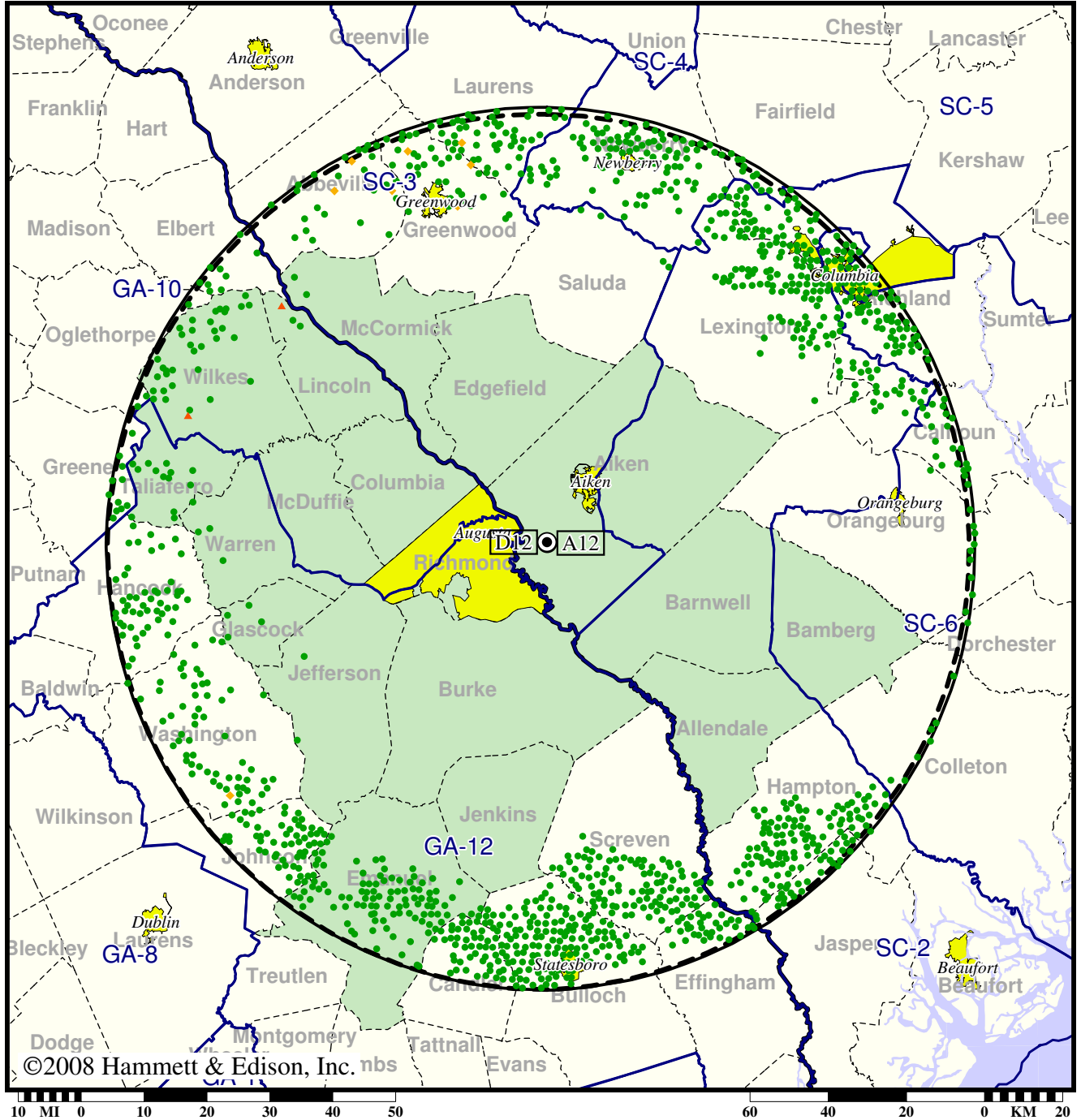
- Coverage gained after DTV transition
- (no symbol) No change in coverage
- ◆ Coverage lost but still served by same network
- ▲ Coverage lost and no other service by same network

Station WRDW-TV • Analog Channel 12, DTV Channel 12 • Augusta, GA

Expected Change In Coverage: Granted Construction Permit

CP (solid): 20.2 kW ERP at 484 m HAAT, Network: CBS
vs. Analog (dashed): 316 kW ERP at 485 m HAAT, Network: CBS

Market: Augusta, GA



©2008 Hammett & Edison, Inc. nbs

- Coverage gained after DTV transition
- (no symbol) No change in coverage
- ◆ Coverage lost but still served by same network
- ▲ Coverage lost and no other service by same network