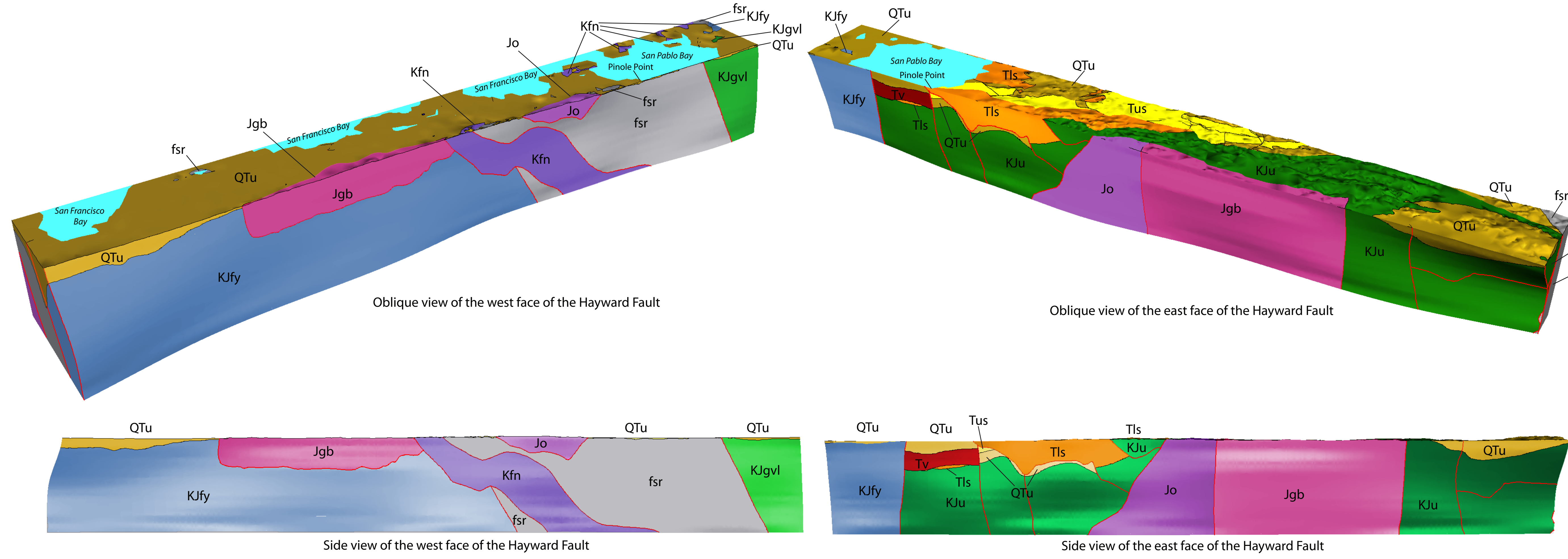
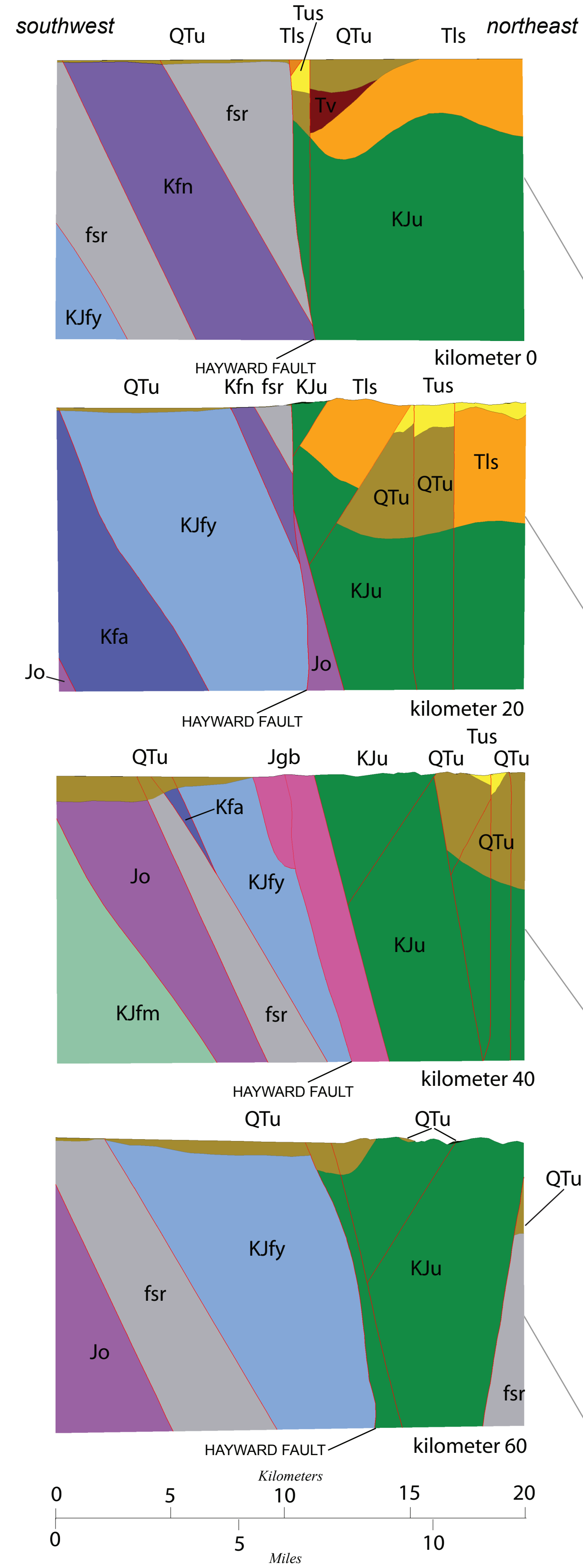
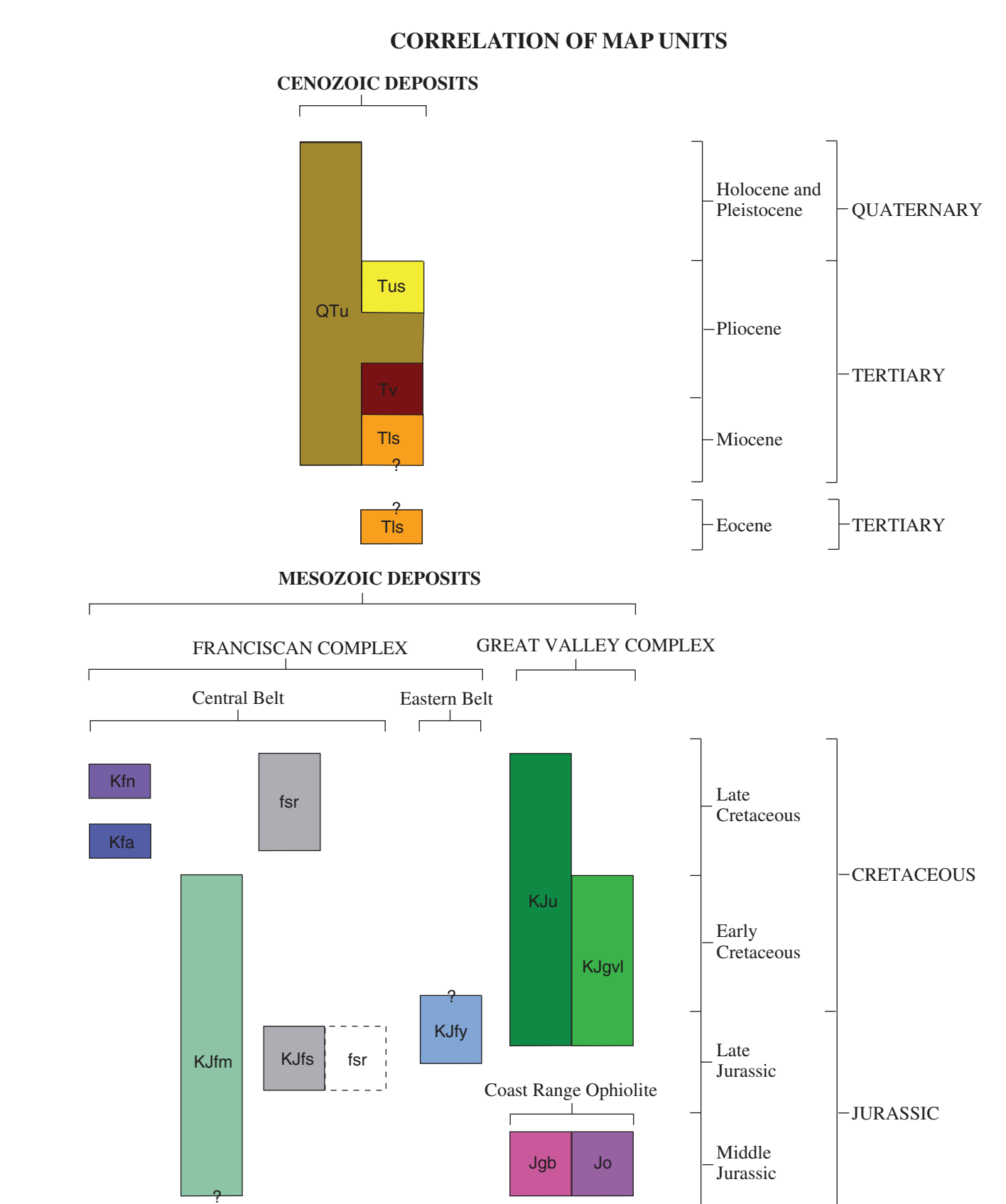
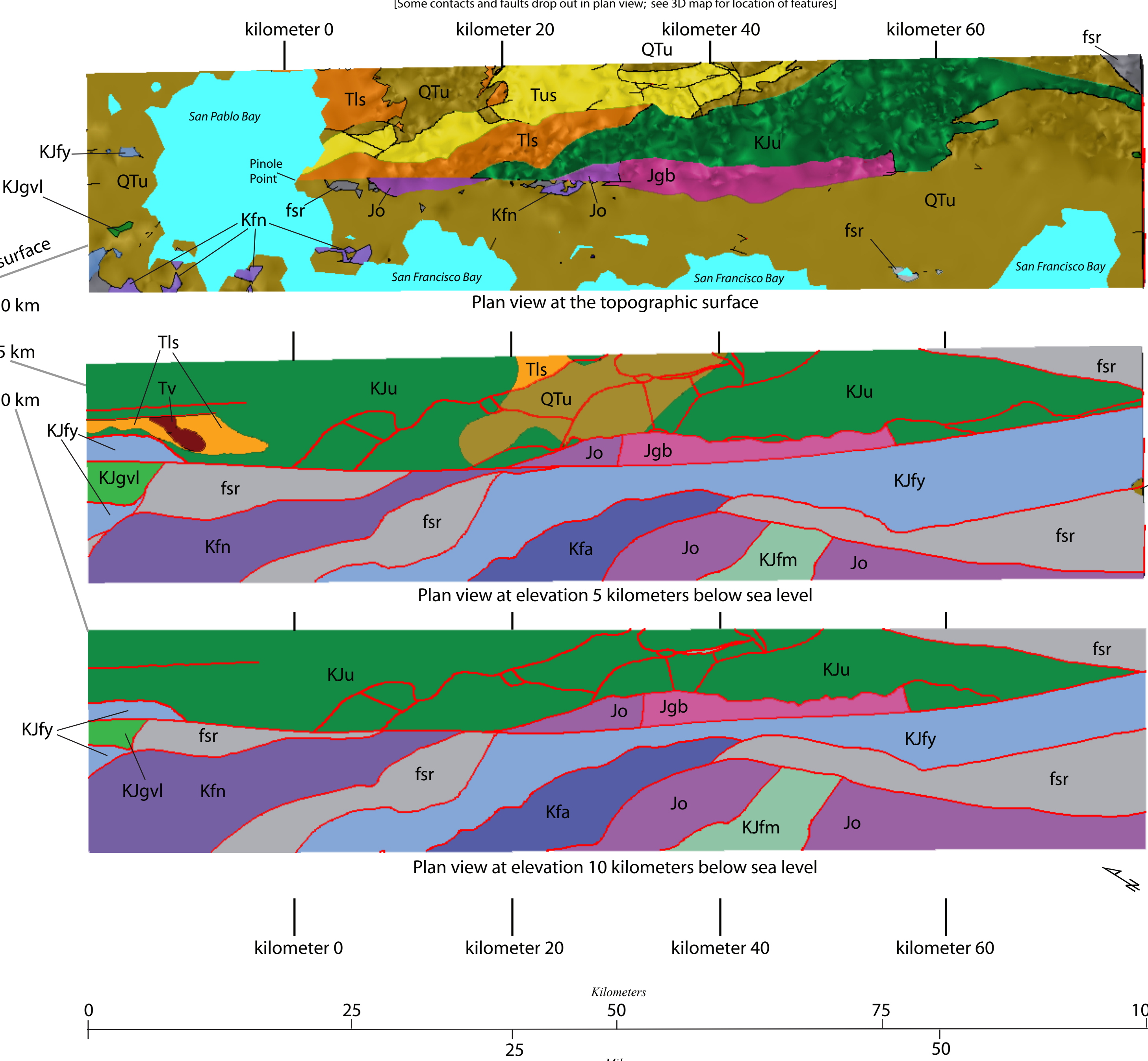


Oblique and side views of the 3D Geologic map
(Shading indicates topography and curvature of the fault surface)

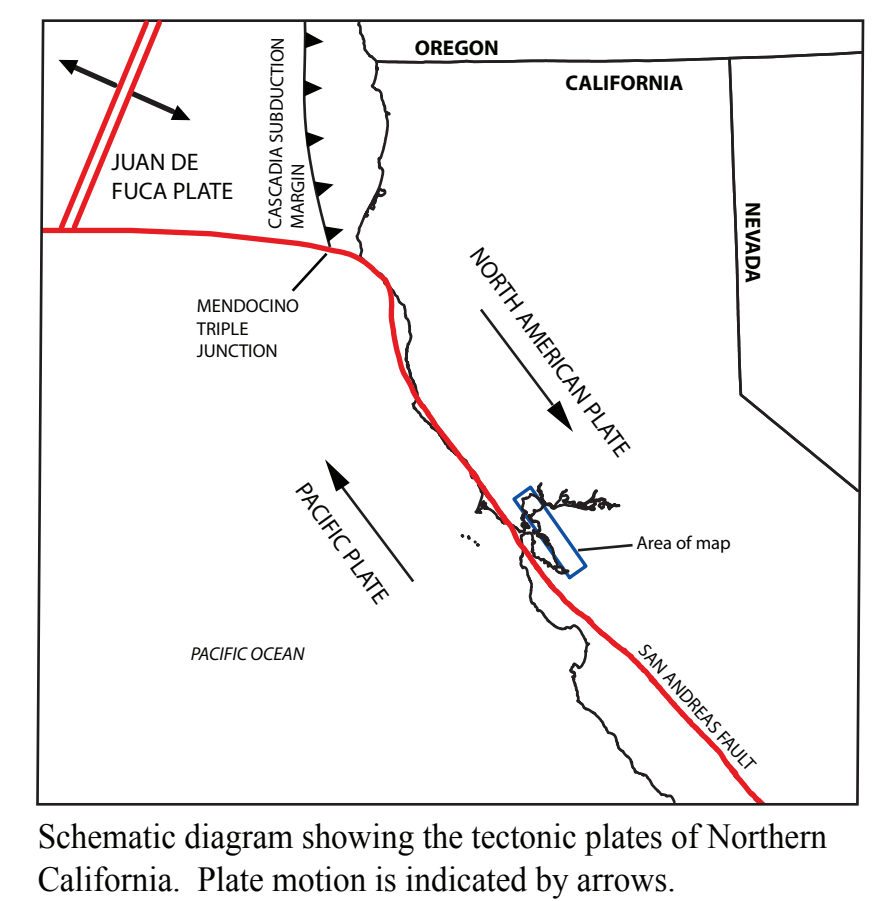
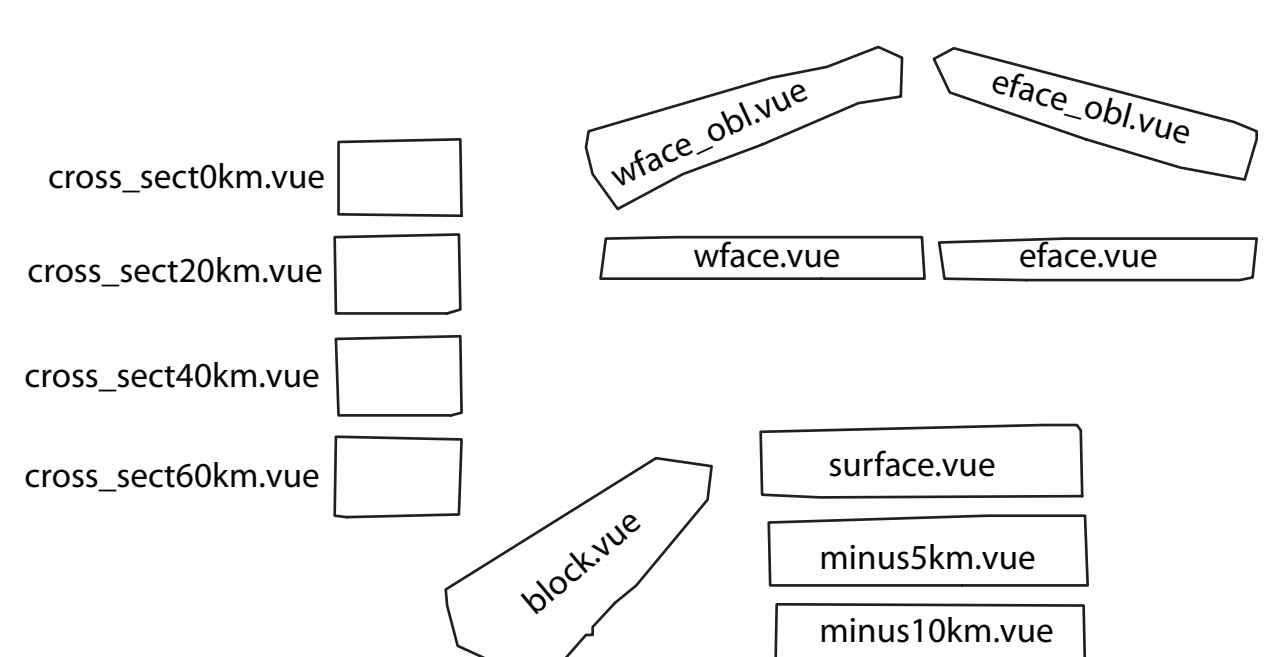
Cross-section views of the 3D geologic map at Pinole Point (kilometer 0), kilometer 20, 40, and 60 along the Hayward Fault



Plan views of the 3D Geologic map
(Some contacts and faults drop out in plan view; see 3D map for location of features)



INDEX OF VIEWS



Three-Dimensional Geologic Map of the Hayward Fault Zone, San Francisco Bay Region, California

By
G.A. Phelps, R.W. Graymer, R.C. Jachens, D.A. Ponce, R.W. Simpson, and C.M. Wentworth
2008

INDEX MAP



The names of the .vue files associated with each view are shown in the key above. To see a given view, open the 3D map and select the appropriate .vue file, which will set the viewing parameters and bring up the desired view. See Appendix II for instructions to query the 3D map.

Any use of trade, firm, or product names in this publication is for descriptive purposes only and does not imply endorsement by the U.S. Government. For more by U.S. Geological Survey, Information Services, Box 25286, Federal Center, Denver, CO 80225-0286. Digital files available at <http://pubs.usgs.gov/si/3045/>