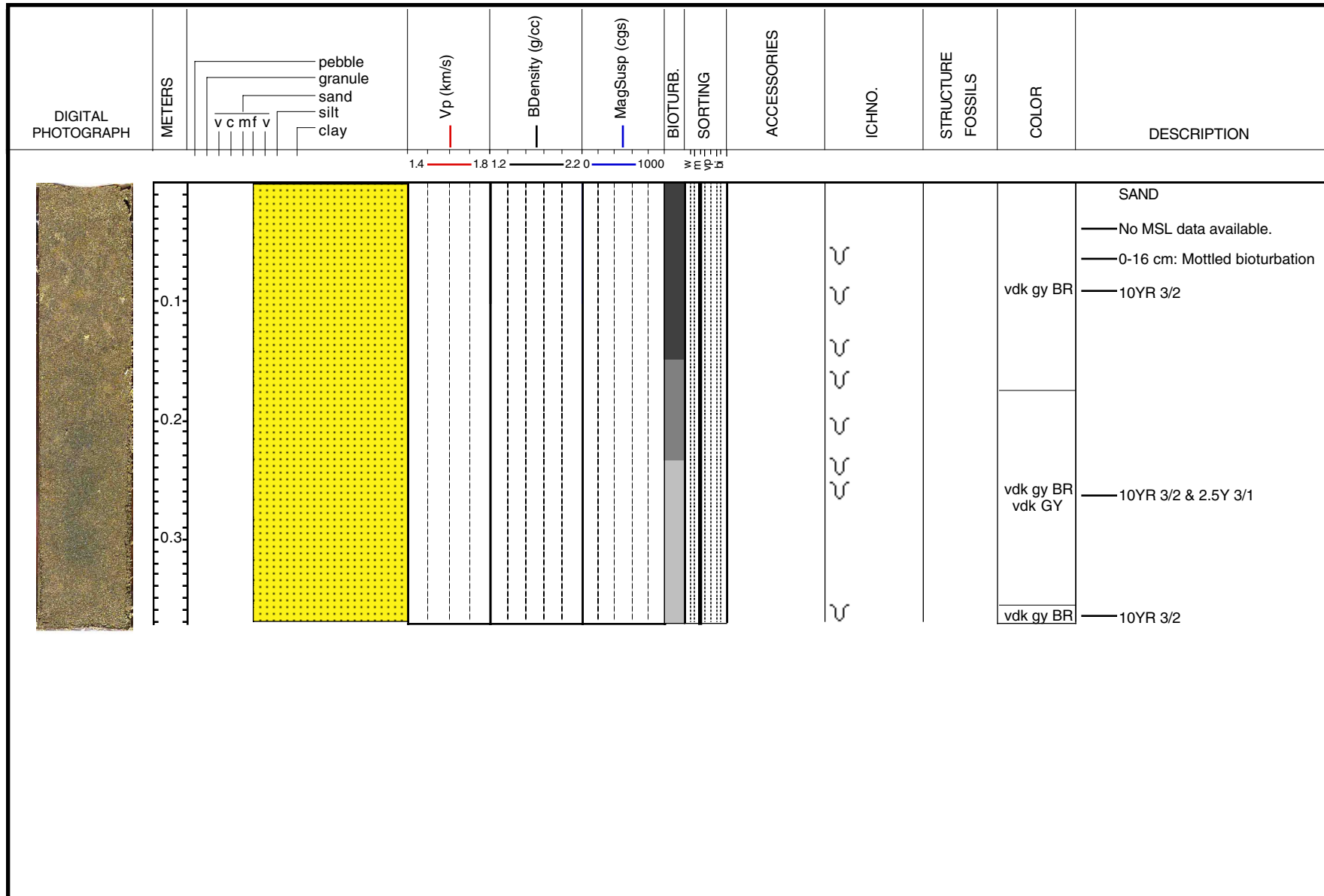


**U.S. Geological Survey  
MONTEREY BAY NATIONAL MARINE SANCTUARY PROJECT**

Water Depth: 30 meters  
Lat/Lon: 37.48935, -122.55344  
Collected: 9/8/1995

**P295MB - B238 SS (0-37 cm)**



Return to Index Map

Return to Legend