

PRINCIPAL TYPES OF SORGHUM DAMAGE

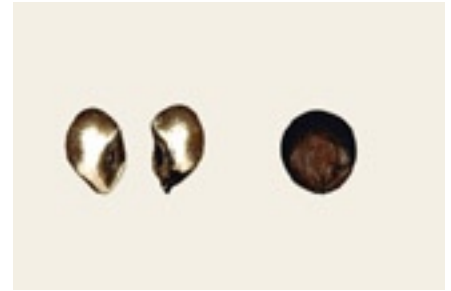
A kernel of sorghum is considered damaged for inspection purposes only when the damage is distinctly apparent and of such character as to be recognized as damaged for commercial purposes.



**Sorghum-1.1 Germ Damage
(bleach method)**



**Sorghum-2.0 Ground and/or
Weather Damage**



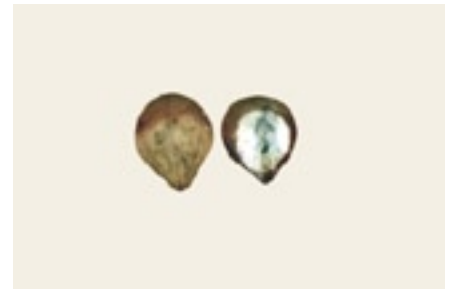
Sorghum-3.0 Heat Damage



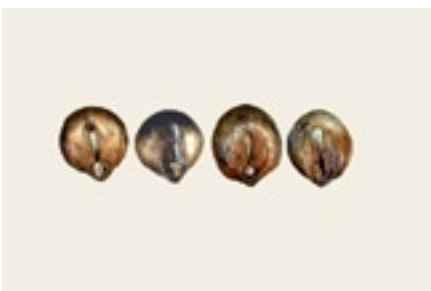
Sorghum-4.0 Insect Bored Damage



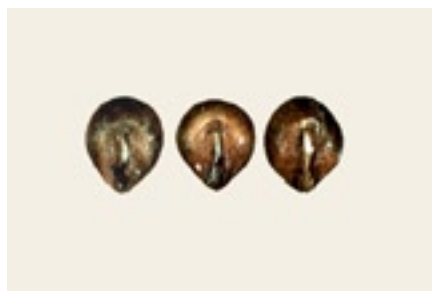
Sorghum-5.0 Mold Damage



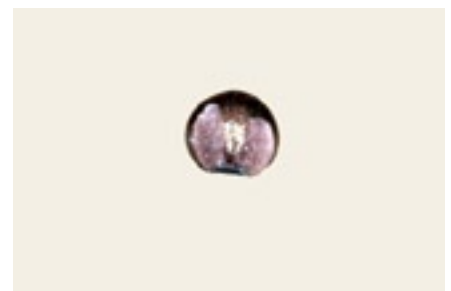
**Sorghum-5.1 Mold Damage
(internal)**



Sorghum-6.0 Sprout Damage



**Sorghum-7.0 Split Germs
(sound kernels)**



**Sorghum-8.0 Purple Pigment
Damage**

Sorghum damage Definitions

In general, a kernel of sorghum is considered damaged for inspection and grading purposes only when the damage is distinctly apparent and of such character as to be recognized as damaged for commercial purposes.

Germ-Damaged Kernels. Kernels and pieces of kernels of sorghum which, after bleaching, contain dark colored germs. Sorghum containing a germ damage or suspected of containing germ damage must be bleached. (Reference: Interpretive Line Slide No. S-1.1.)

Ground and/or Weather-Damaged Kernels. Kernels and pieces of kernels of sorghum which contain dark stains or discolorations and have a rough cake-like appearance caused by ground and/or weather conditions. (Reference: Interpretive Line Slide No. S-2.0.)

Heat-Damaged Kernels. Kernels and pieces of kernels of sorghum which are materially discolored and damaged by heat. (Reference: Interpretive Line Slide No. S-3.0.) It is necessary in most cases to cross section the kernels and make an analysis to determine if the color is creamy.

Insect-Bored Kernels. Kernels and pieces of kernels of sorghum which have been bored or tunneled by insects. (Reference: Interpretive Line Slide No. S-4.0.)

Mold-Damaged Kernels. Kernels and pieces of kernels of sorghum containing surface mold. (Reference: Interpretive Line Slide No. S-5.0.) Do not confuse mold with dark stains or discolorations caused by ground and/or weather conditions.

Mold-Damaged Kernels (Internal Mold). Kernels and pieces of kernels containing mold, usually in the germ area under the bran layer. The bran coat should be removed carefully because scraping too deeply could remove the damage. (Reference: Interpretive Line Slide No. S-5.1.)

Sprout-Damaged Kernels. Kernels and pieces of kernels of sorghum in which the sprout definitely protrudes from the germ (Reference: Interpretive Line Slide No. S-6.0.)

Kernels and pieces of kernels of sorghum which have a split over the germ area, but which have no sprout protruding, are considered sound unless otherwise damaged. (Reference: Interpretive Line Slide No. S-7.0.)

Purple Pigment Damaged Kernels. Kernels and pieces of kernels which are materially discolored by purple pigment. (Reference: Interpretive Line Slide No. S-8.0.)