

*Northeast Ohio Beam Alliance Limited
(NEO Beam)*

Tom Southards - Kent State University

330-672-2892 / 330-672-2894 [fax] / tsouthards@tech.kent.edu

Jack Crews - Kent Regional Business Alliance

330-672-2772 ext. 396 / 330-672-9338 [fax] / jcrews@bsa3.kent.edu

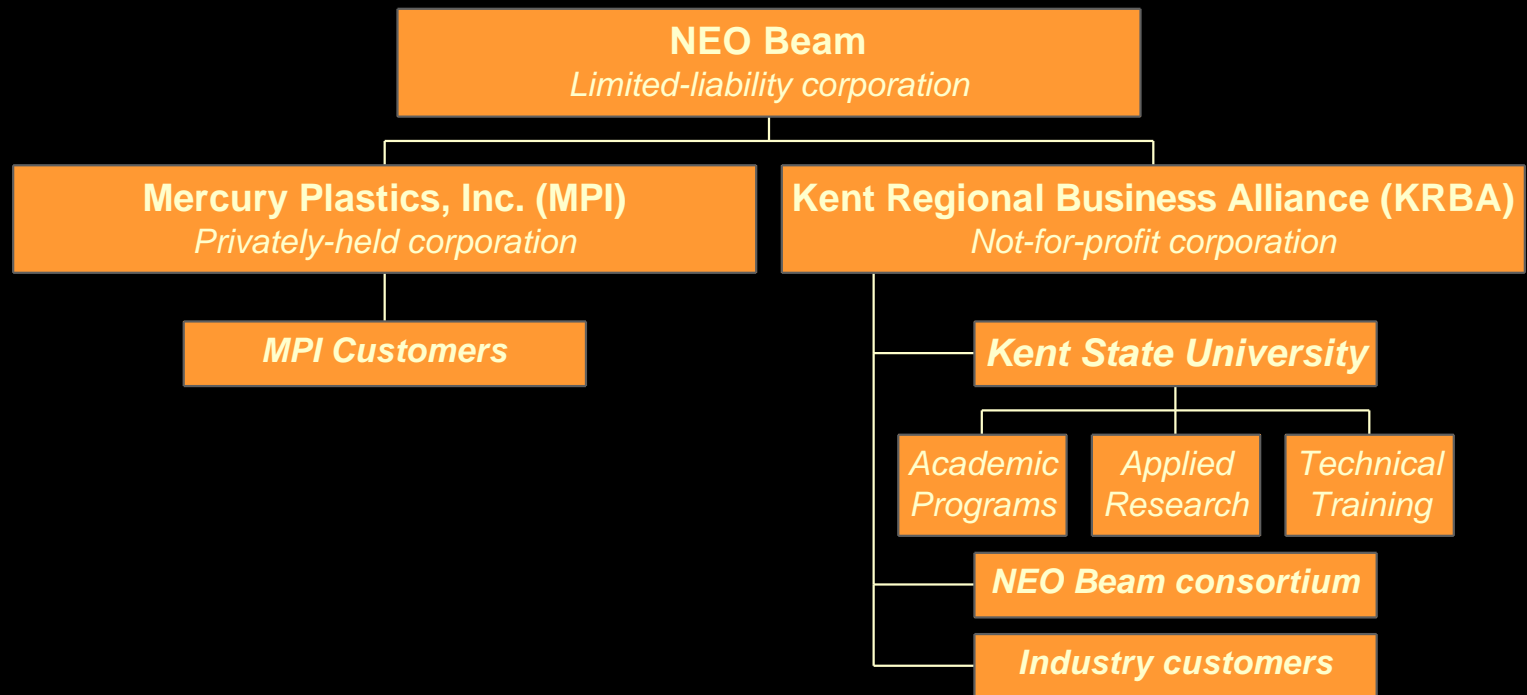
NEO Beam

- Who we are
- What we're about
- Our capabilities and plans
- How we fit your needs

NEO Beam

- Industrial - Academic Partnership
 - *Mercury Plastics, Inc.*
 - *Kent Regional Business Alliance*
 - *Kent State University*

NEO Beam



NEO Beam

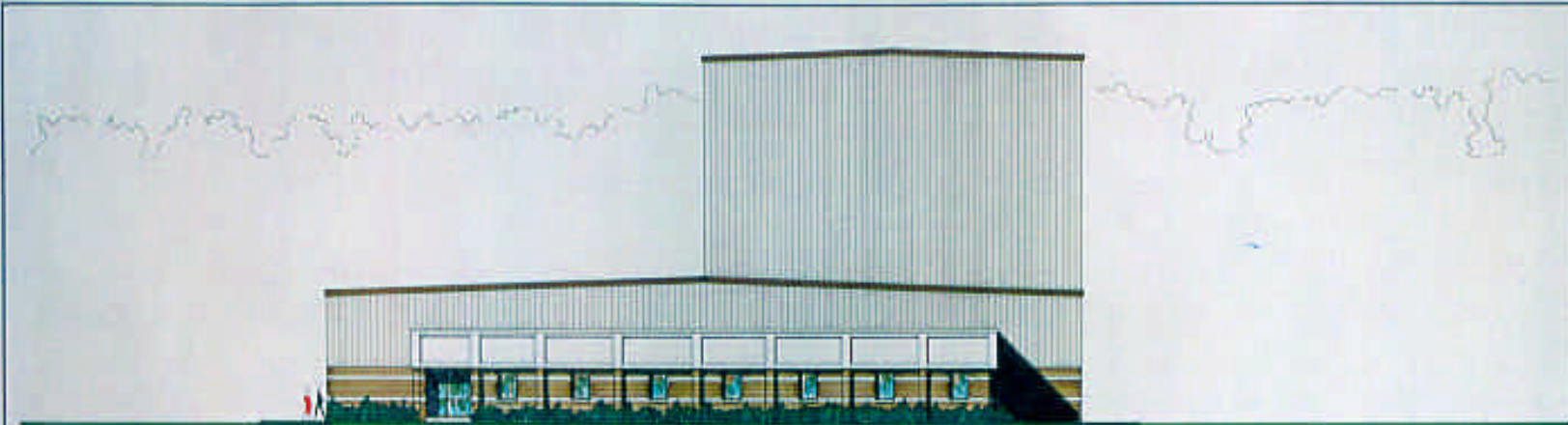
- Kent State University
 - Academic programs
 - Technical training
 - Applied research
- NEO Beam consortium
- Industry customers

NEO Beam

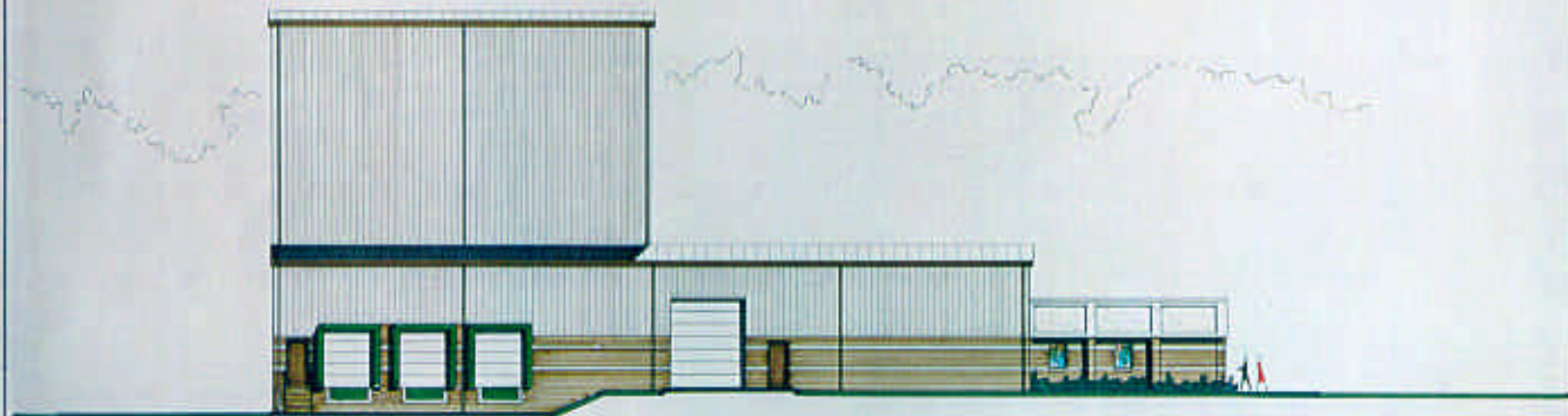
- Facility Targets Mission
 - Economical
 - Flexible
 - Reliable
 - Supports development-to-commercialization



PROPOSED NEW FACILITY FOR
NEOBEAMCO
SOUTH HAVEN, MISSOURI 65403, MO



SOUTH ELEVATION

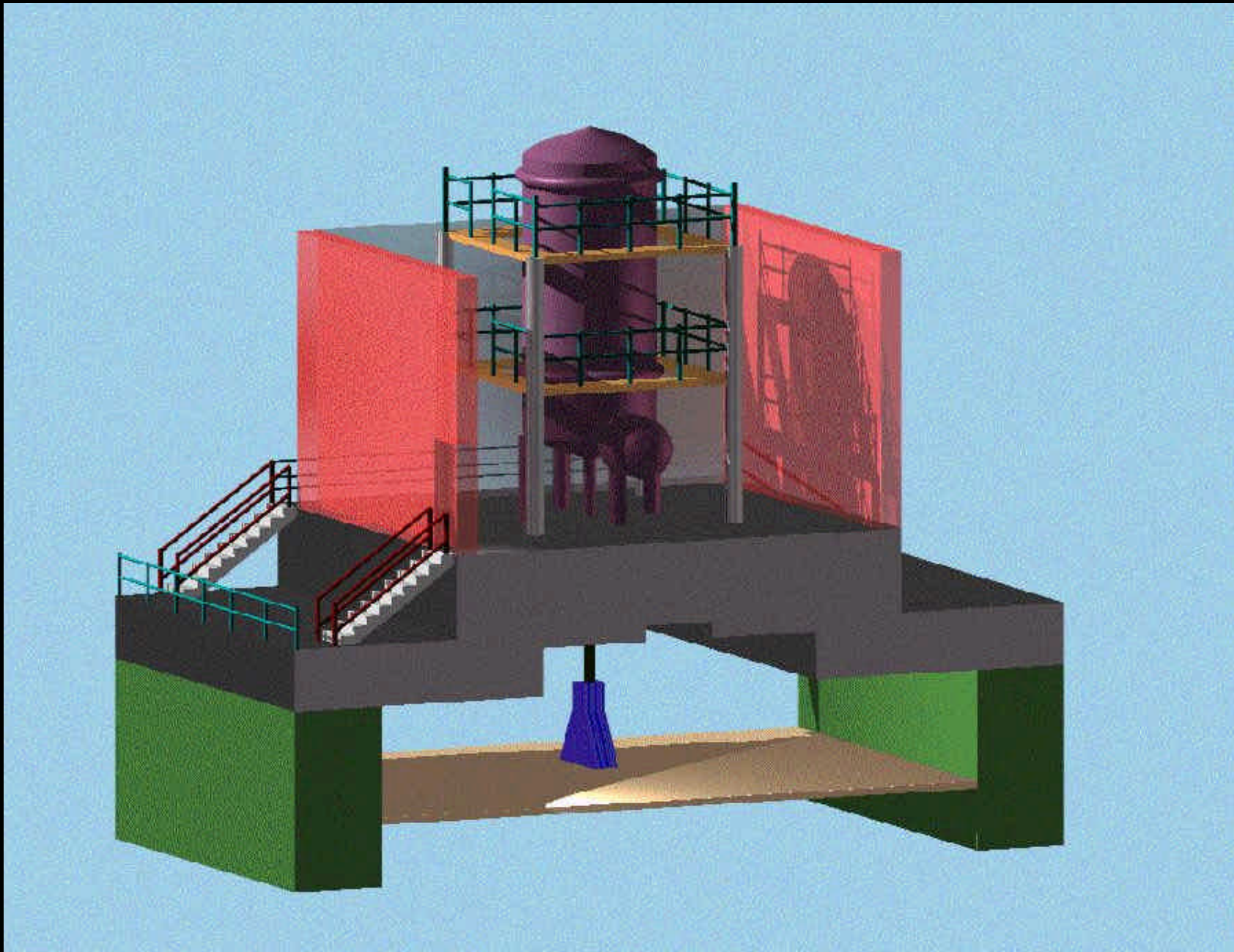


WEST ELEVATION



NOT TO SCALE
ALL DIMENSIONS SHOWN ARE APPROXIMATE
AND SUBJECT TO CHANGE WITHOUT NOTICE
DATE: 10/15/10

A-2



NEO Beam

- Electron Beam: RDI Dynamitron
 - Beam Power: 150 KW
 - Beam Energy: 5 MeV
 - Beam energy turndown to 1 MeV
 - Beam power turndown to 1 KW
 - Flexible control system

NEO Beam

- Vault
 - **Scan horn to floor: 5 ft**
 - **Floor area: 21 ft x 30 ft**
 - **Floor-to-ceiling: 8 ft**
 - **Slots for continuous products**
 - **Conveyor for discrete products**
 - **Ports for bulk products**
 - **Few-of-a-kind run capabilities**

NEO Beam

- Conveyor System - SI Handling Systems
 - Cart size: 48” x 72”, 750 # /cart max. cap.
 - 5 to 55 feet / min. under-beam
 - Control modes
 - Master with beam-following
 - Slave-to-beam
 - Independent

NEO Beam

- Reel - to - Reel Materials Handling
 - Tubing sizes: 0.188 in. to 1.25 in. OD
 - 1200 fpm to 120 fpm (size dependent)
 - Reel size: 48 in. to 96 in. (10,000 # max.)
 - Min. bend radius: 30 in.
 - Race-track and bow-tie under beam options
 - Flexible control modes for product needs

NEO Beam

- On-site support facilities
 - Labs:
 - **Dosimetry**
 - **Polymer physical properties**
 - **Temporary space**
 - Offices and General
 - **Temporary office / general space**
 - **Video conferencing**
 - **Complete freight and materials handling**

NEO Beam

- | | |
|-------------------------------|-------------------|
| • Milestone | • Date |
| – <i>Start Construction</i> | – <i>Dec 1998</i> |
| – <i>Accelerator Delivery</i> | – <i>Jul 1999</i> |
| – <i>Facility Operational</i> | – <i>Oct 1999</i> |
| – <i>Commercial</i> | – <i>Jan 2000</i> |

NEO Beam

- Training and developing your workforce
- Partnering on your development
- Consortium
- Beaming services