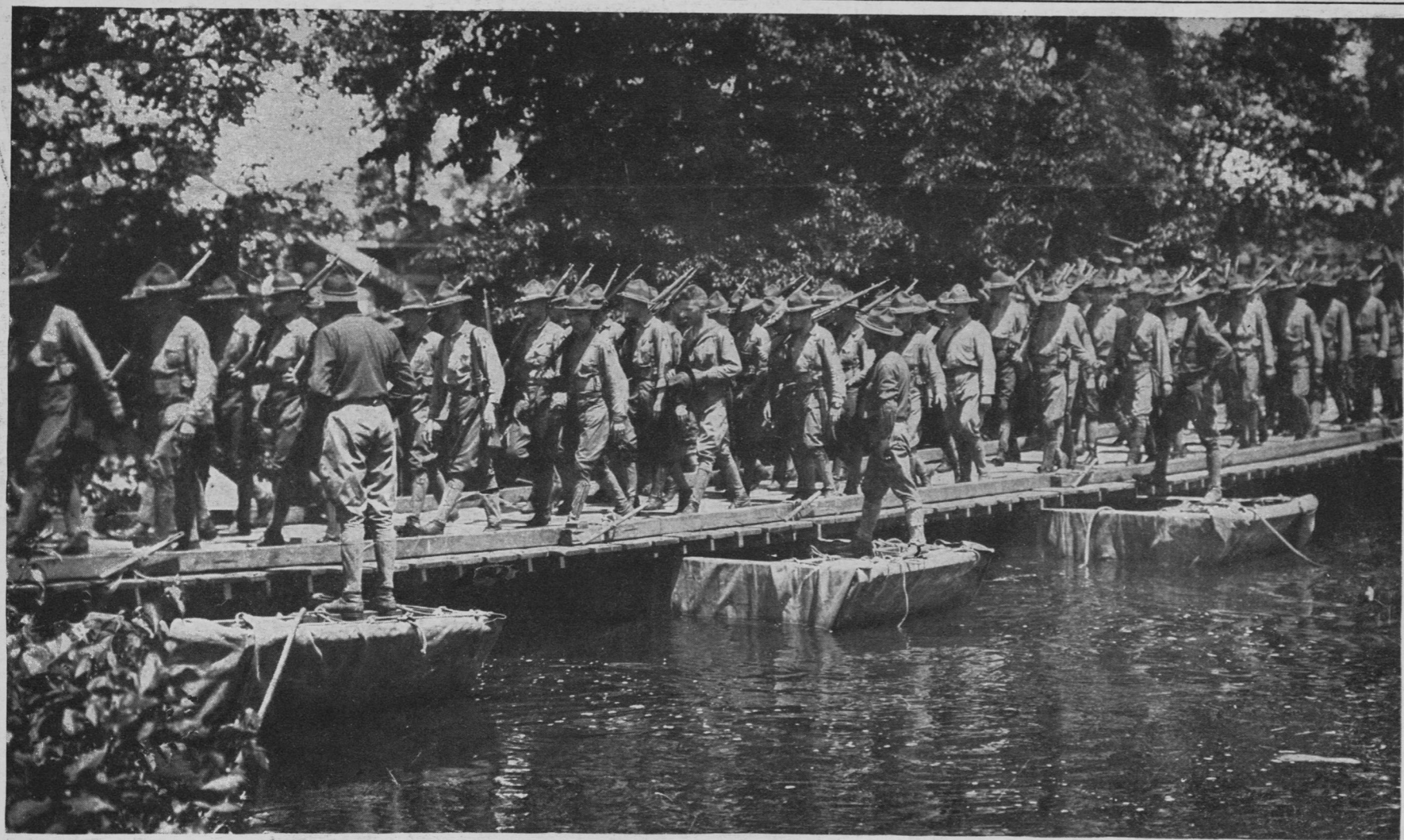
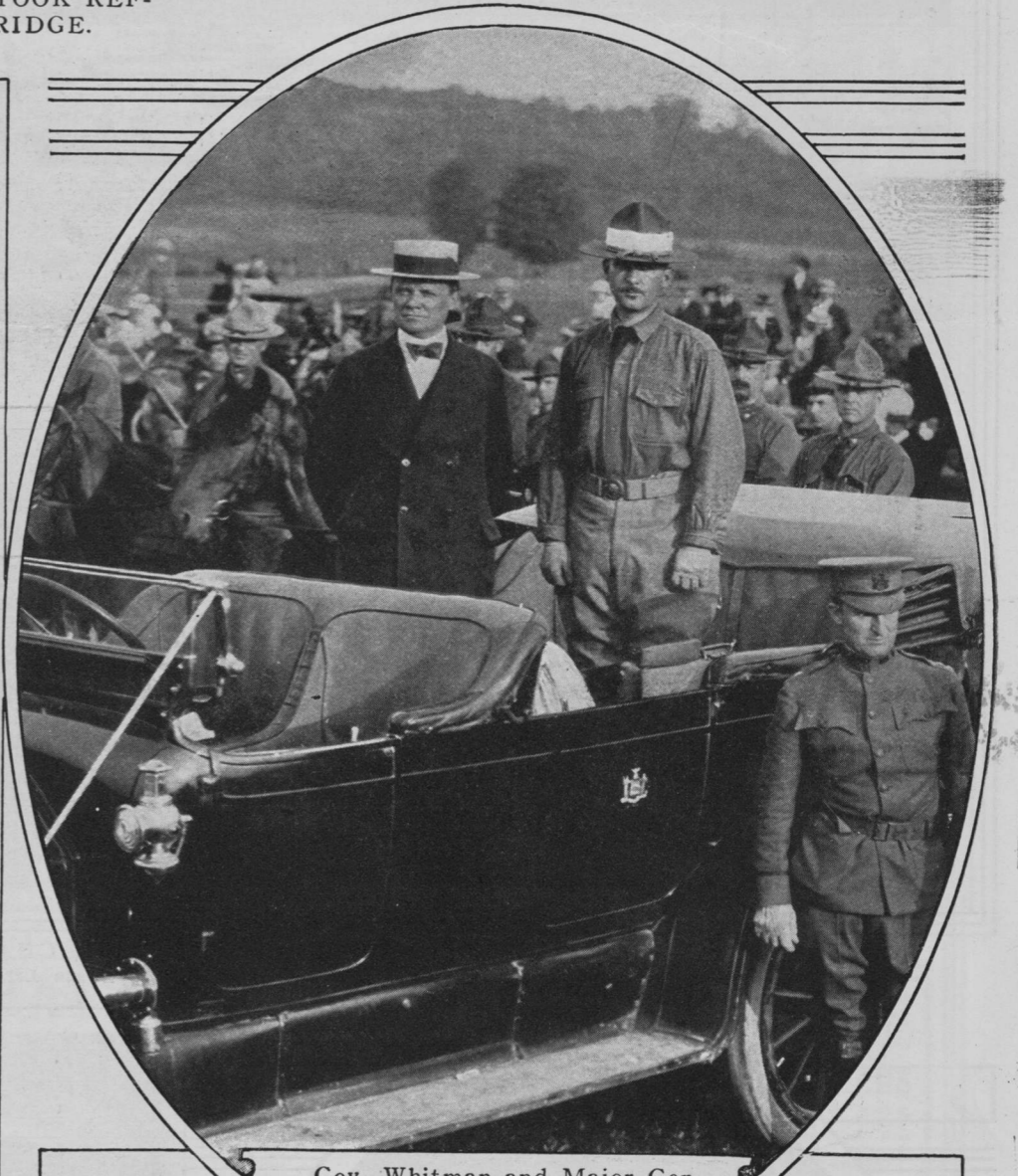


EASTLAND SURVIVORS, WHO CLAMBERED OVER THE RAIL AS THE STEAMER TURNED UNDER THEM AND TOOK REFUGE ON THE UPPER SIDE OF THE BOAT, ESCAPING TO LAND BY USING THE TUG KENOSHA AS A BRIDGE.
(Photo © by International News Service.)



Seventh Regiment, N. G. N. Y., Crossing the First Pontoon Bridge Ever Built by National Guardsmen in the United States, Over Which an Army Was Immediately Afterwards Moved. It Was Thrown Across Sprout Creek, Dutchess County, During the Red and Blue Army Campaigns on Fishkill Plains.
(Photo by Edwin Levick.)



Gov. Whitman and Major Gen. John F. O'Ryan Reviewing the First Brigade, N. G. N. Y., at Camp Whitman.



MAYOR JOHN PURROY MITCHEL ADDRESSING THE FOUR MANHATTAN REGIMENTS, COMPRISING THE FIRST BRIGADE, N. G. N. Y., ON THE LAST DAY OF THEIR WAR GAMES ON FISHKILL PLAINS.
(Photos © Thompson Photo Co.)