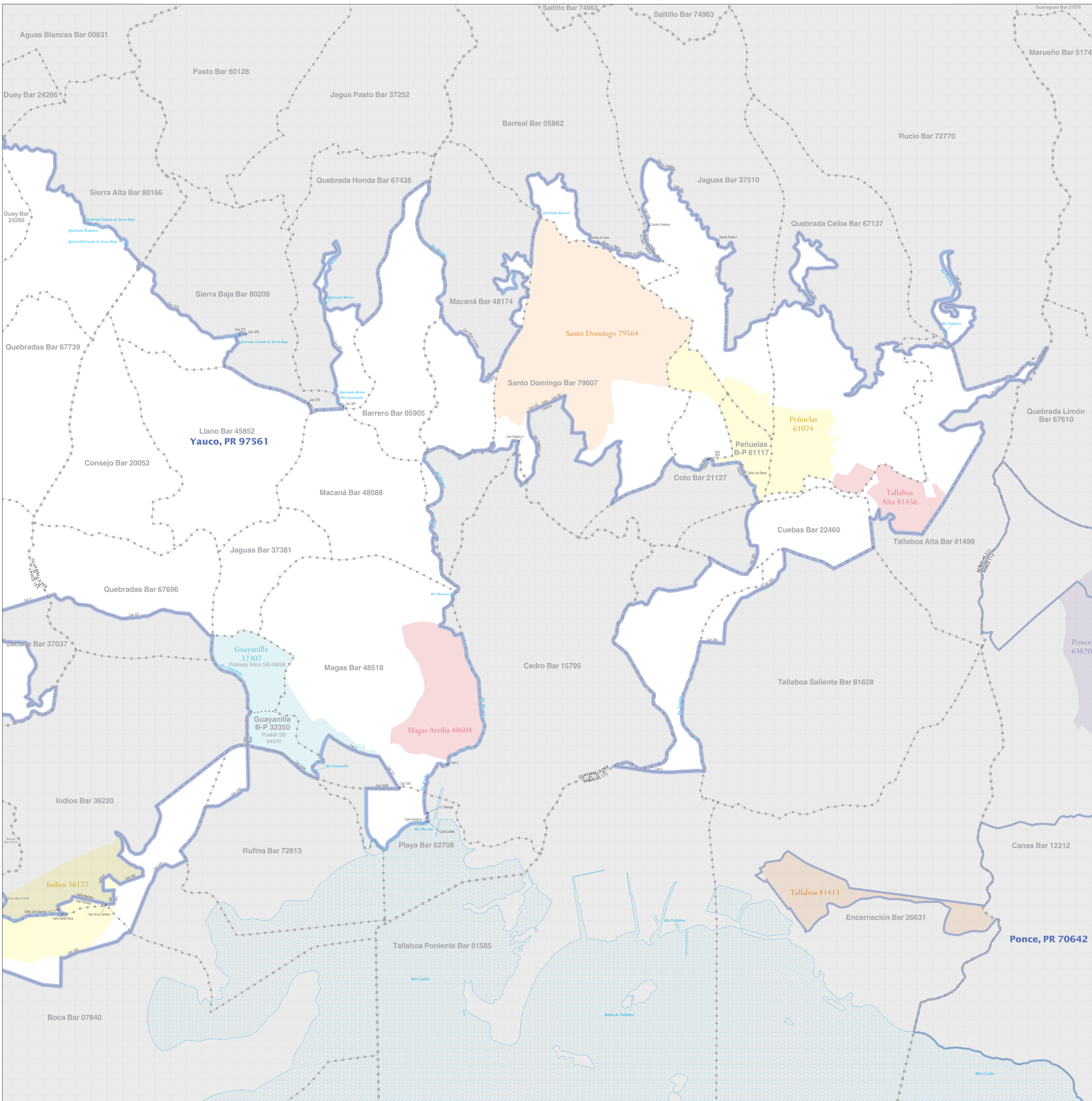


URBANIZED AREA OUTLINE MAP (CENSUS 2000)

Yauco, PR



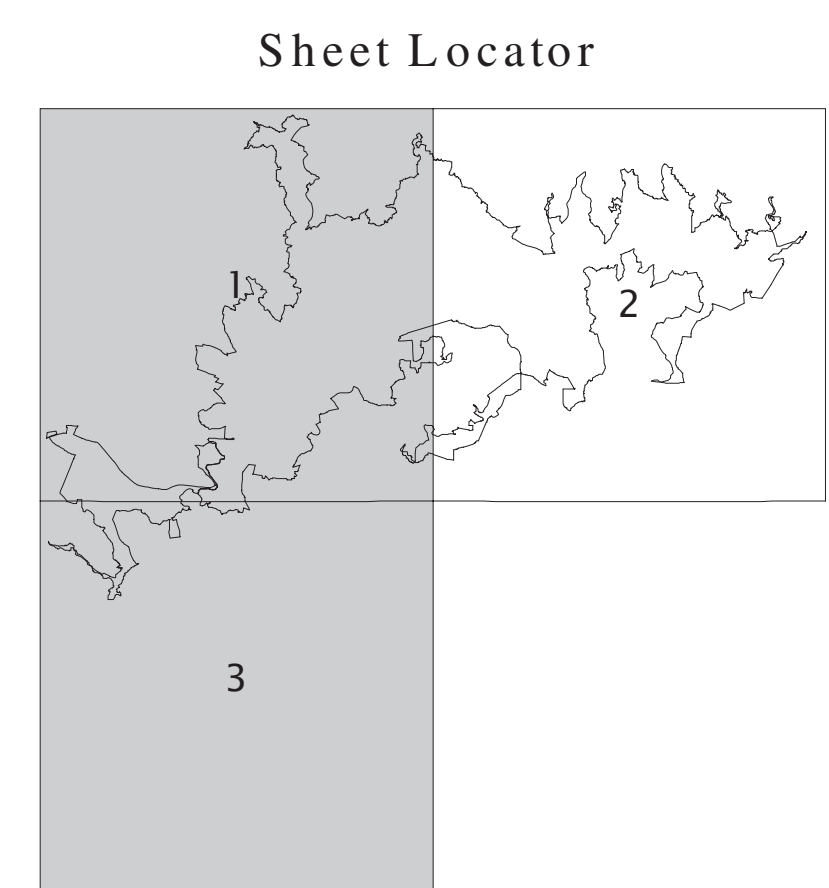
LEGEND

SYMBOL DESCRIPTION / SYMBOL	NAME/STYLE
State or Statistically Equivalent Area	PUERTO RICO 72
Urbanized Area	Arecibo, PR 03034
Urban Cluster	Utado, PR 89812
Municipio	COAMO 043
Barrio or Barrio-Pueblo	Zanja Bar 88508
Subbarrio	La Cruz 40248
Comunidad or Zona Urbana	San Juan 76770

Where state, municipio, barrio, barrio-pueblo, and/or subbarrio boundaries coincide, the map shows the boundary symbol for only the highest ranking of these boundaries.

FEATURE	SYMBOL	FEATURE	SYMBOL
Major Roads		Stream or Shoreline ¹	
Other Roads ¹		Large River or Lake	
Railroad ¹		Military Installation	
Pipeline or Power Line ¹		Outside Subject Area	
Ridge/line of other physical feature ¹		Major Airports	
Nonvisible Boundary ¹			
Other Boundary Feature ¹			

¹ Features shown only when coincident with the subject urbanized area / urban cluster boundary.
² Feature coincident with the boundary of an entity other than the subject urbanized area / urban cluster.



The urban areas (urbanized areas and urban clusters) are defined using Census 2000 blocks and population data for statistical purposes only. The detailed criteria for defining urban areas were published in the Federal Register (67 FR 11661). All legal boundaries and names are as of January 1, 2000. The boundaries shown on this map are for Census Bureau statistical data collection and tabulation purposes only; their depiction and designation for statistical purposes does not constitute a determination of jurisdictional authority or rights of ownership or entitlement.
 Source: U.S. Census Bureau's TIGER database
 Projection: State-based Albers' Equal Area
 U.S. DEPARTMENT OF COMMERCE Economics and Statistics Administration U.S. Census Bureau

