

WEST BRANCH SUSQUEHANNA RIVER BASIN

01544000 FIRST FORK SINNEMAHONING CREEK NEAR SINNEMAHONING, PA

LOCATION.--Lat 41°24'06", long 78°01'28", Cameron County, Hydrologic Unit 02050202, on right bank on Township Route 357, 350 ft downstream from Woodrock Run, 1,500 ft upstream from Roaring Run, 0.8 mi downstream from George B. Stevenson Dam (First Fork Sinnemahoning Creek Reservoir), and 7.5 mi northeast of Sinnemahoning.

DRAINAGE AREA.--245 mi².

PERIOD OF RECORD.--October 1953 to current year.

GAGE.--Water-stage recorder. Datum of gage is 878.71 ft above sea level. Prior to Apr. 1, 1954, nonrecording gage at same site and datum.

REMARKS.--Records good except those for estimated daily discharges, which are poor. Flow regulated since Jan. 31, 1956 by George B. Stevenson Dam (station 01543900). Several measurements of water temperature were made during the year. Satellite telemetry at station.

EXTREMES OUTSIDE PERIOD OF RECORD.--Maximum discharge known, 80,000 ft³/s, July 18, 1942, by slope-area measurement.

DISCHARGE, CUBIC FEET PER SECOND, WATER YEAR OCTOBER 1999 TO SEPTEMBER 2000
DAILY MEAN VALUES

DAY	OCT	NOV	DEC	JAN	FEB	MAR	APR	MAY	JUN	JUL	AUG	SEP
1	338	29	414	189	112	1580	249	326	280	182	32	19
2	103	30	395	161	112	1230	225	321	225	152	105	19
3	75	99	334	164	112	837	404	276	225	135	113	19
4	35	102	253	249	112	743	1780	237	219	141	23	19
5	15	71	215	500	112	691	2730	254	212	123	14	18
6	14	81	215	621	96	566	1770	230	206	99	14	14
7	14	80	262	620	89	405	1120	199	258	90	59	14
8	18	78	231	536	e86	361	1060	179	242	84	229	14
9	24	76	211	444	e66	402	1650	167	189	72	151	14
10	24	74	210	427	67	353	1840	166	175	65	32	14
11	45	72	260	459	111	330	1310	163	156	83	35	16
12	48	56	234	417	112	330	893	161	208	86	66	30
13	31	55	205	400	96	301	717	146	371	62	65	106
14	31	54	298	388	128	253	600	135	575	55	52	84
15	78	55	932	329	199	303	541	148	710	53	40	45
16	125	53	1300	313	223	330	479	138	1070	53	57	44
17	136	45	1010	243	223	514	434	115	1060	75	65	35
18	60	42	817	163	223	790	490	103	900	77	45	30
19	31	39	737	285	223	846	595	755	1420	68	35	30
20	32	35	603	304	218	710	711	1880	1260	63	25	26
21	60	34	558	211	198	621	884	1390	903	44	18	20
22	75	33	488	152	176	624	1190	899	958	30	18	33
23	56	33	467	172	215	624	1680	722	658	43	42	41
24	38	33	420	207	472	624	1590	1420	538	42	55	41
25	30	33	347	188	1630	624	1220	1880	404	38	30	41
26	30	748	319	160	2990	534	798	1460	357	30	16	42
27	29	2890	319	e140	2390	463	749	1020	357	29	16	67
28	29	2360	282	e110	3000	425	620	574	331	30	41	66
29	29	1090	245	e100	2530	379	479	505	221	42	43	44
30	29	593	224	95	---	329	394	394	191	38	19	44
31	29	---	213	128	---	286	---	331	---	32	19	---
TOTAL	1711	9073	13018	8875	16321	17408	29202	16694	14879	2216	1574	1049
MEAN	55.2	302	420	286	563	562	973	539	496	71.5	50.8	35.0
MAX	338	2890	1300	621	3000	1580	2730	1880	1420	182	229	106
MIN	14	29	205	95	66	253	225	103	156	29	14	14

e Estimated.

WEST BRANCH SUSQUEHANNA RIVER BASIN

01544000 FIRST FORK SINNEMAHONING CREEK NEAR SINNEMAHONING, PA--Continued

STATISTICS OF MONTHLY MEAN DATA FOR WATER YEARS 1956 - 2000, BY WATER YEAR (WY) (SINCE REGULATION)

	OCT	NOV	DEC	JAN	FEB	MAR	APR	MAY	JUN	JUL	AUG	SEP
MEAN	214	396	467	385	471	811	885	510	271	162	119	135
MAX (WY)	1033	1162	1051	1131	1452	1820	2300	1037	1334	808	977	837
MIN (WY)	1991	1986	1991	1996	1981	1964	1993	1984	1989	1992	1994	1975
MIN (WY)	9.76	17.6	21.3	16.6	77.9	171	320	103	39.5	14.5	14.2	5.31
(WY)	1964	1965	1961	1961	1963	1960	1976	1985	1999	1966	1962	1964

SUMMARY STATISTICS	FOR 1999 CALENDAR YEAR	FOR 2000 WATER YEAR	WATER YEARS 1956 - 2000	
ANNUAL TOTAL	104396.1	132020		
ANNUAL MEAN	286	361	401	1994
HIGHEST ANNUAL MEAN			640	1999
LOWEST ANNUAL MEAN			236	1999
HIGHEST DAILY MEAN	5120	Jan 26	3000	Feb 28
LOWEST DAILY MEAN	6.3	Aug 30	14	Oct 6 ^b
ANNUAL SEVEN-DAY MINIMUM	a9.7	Jul 12	15	Sep 5
INSTANTANEOUS PEAK FLOW			3320	Feb 28
INSTANTANEOUS PEAK STAGE			3.14	Feb 28
10 PERCENT EXCEEDS	698		912	960
50 PERCENT EXCEEDS	80		178	194
90 PERCENT EXCEEDS	12		30	27

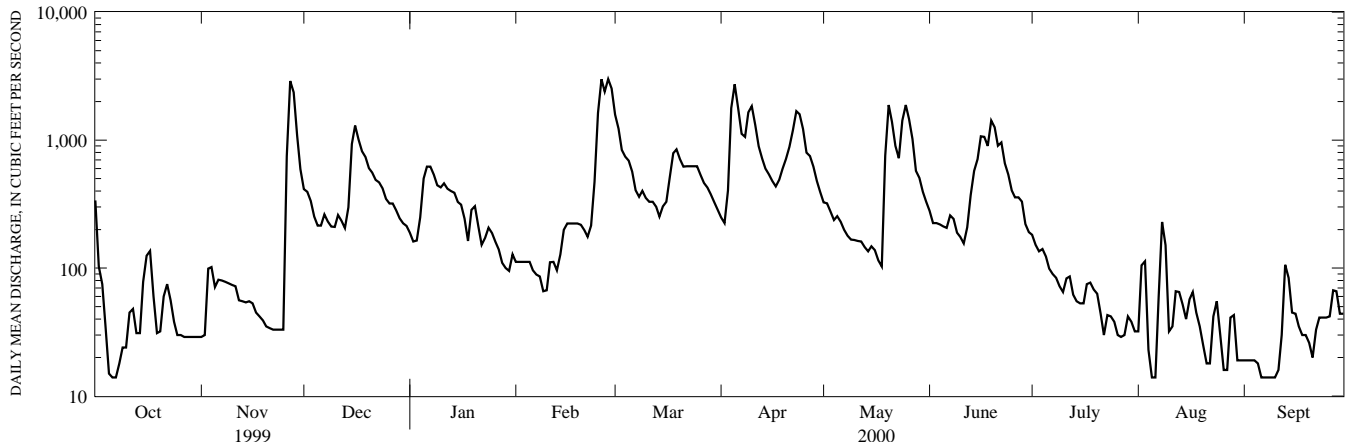
STATISTICS OF MONTHLY MEAN DATA FOR WATER YEARS 1954 - 1955, BY WATER YEAR (WY) (PRIOR TO REGULATION)

	OCT	NOV	DEC	JAN	FEB	MAR	APR	MAY	JUN	JUL	AUG	SEP
MEAN	55.2	101	374	394	467	1277	699	391	177	30.6	44.6	20.4
MAX (WY)	96.7	132	509	503	631	1672	936	626	260	38.9	74.4	23.4
MIN (WY)	1955	1955	1955	1955	1954	1955	1954	1954	1954	1954	1955	1955
MIN (WY)	13.7	70.0	239	285	304	883	462	156	93.4	22.3	14.9	17.4
(WY)	1954	1954	1954	1954	1955	1954	1955	1955	1955	1955	1954	1954

SUMMARY STATISTICS WATER YEARS 1954 - 1955

ANNUAL MEAN	336	
HIGHEST ANNUAL MEAN	339	1955
LOWEST ANNUAL MEAN	332	1954
HIGHEST DAILY MEAN	5020	Mar 2 1954
LOWEST DAILY MEAN	5.6	Sep 22 1955
ANNUAL SEVEN-DAY MINIMUM	8.3	Sep 6 1954
INSTANTANEOUS PEAK FLOW	7000	Mar 1 1954
INSTANTANEOUS PEAK STAGE	5.64	Mar 1 1954
ANNUAL RUNOFF (CFSM)	1.37	
ANNUAL RUNOFF (INCHES)	18.63	
10 PERCENT EXCEEDS	980	
50 PERCENT EXCEEDS	103	
90 PERCENT EXCEEDS	14	

a Computed using estimated daily discharges.
 b Also Oct. 7, Aug. 5, 6, Sept. 6-10.



1-YEAR HYDROGRAPH
 OCTOBER 1, 1999 TO SEPTEMBER 30, 2000