

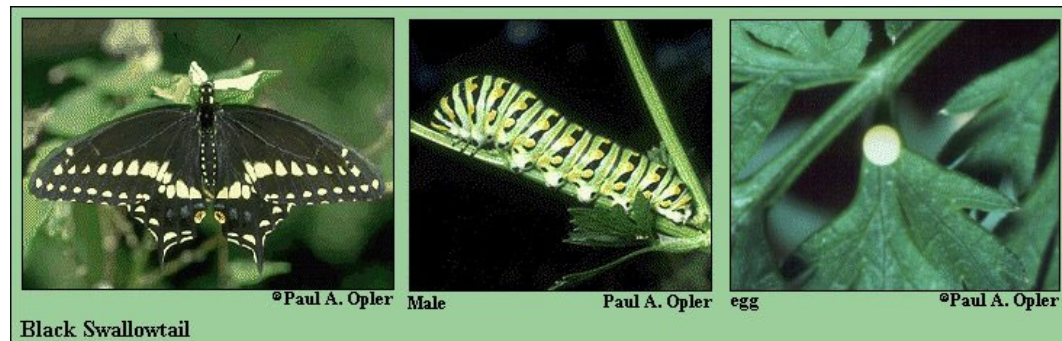
Butterflies of Great Basin National Park Area



Swallowtails (Family Papilionidae)

Swallowtails (Subfamily Papilioninae)

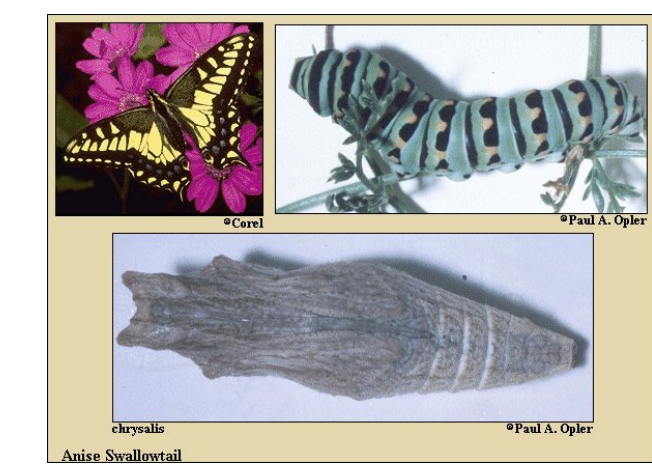
- [Pipevine Swallowtail](#) (*Battus philenor*)
- [Black Swallowtail](#) (*Papilio polyxenes*)
- [Old World Swallowtail](#) (*Papilio machaon*)
- [Anise Swallowtail](#) (*Papilio zelicaon*)
- [Indra Swallowtail](#) (*Papilio indra*)
- [Giant Swallowtail](#) (*Papilio cresphontes*)
- [Western Tiger Swallowtail](#) (*Papilio rutulus*)
- [Two-tailed Swallowtail](#) (*Papilio multicaudata*)
- [Pale Swallowtail](#) (*Papilio eurymedon*)



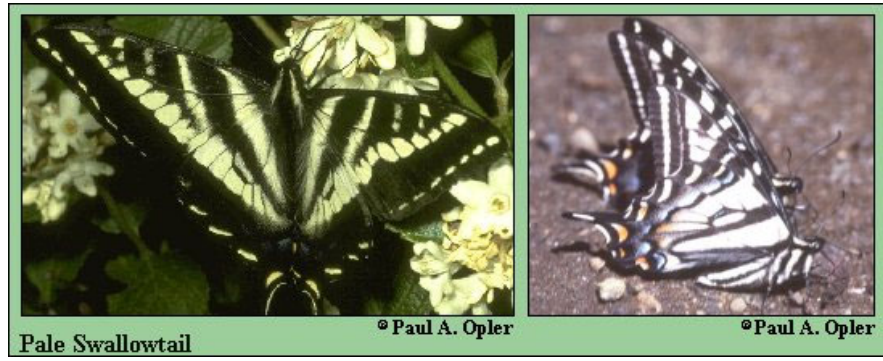
Black Swallowtail

Male

egg



Anise Swallowtail



Pale Swallowtail

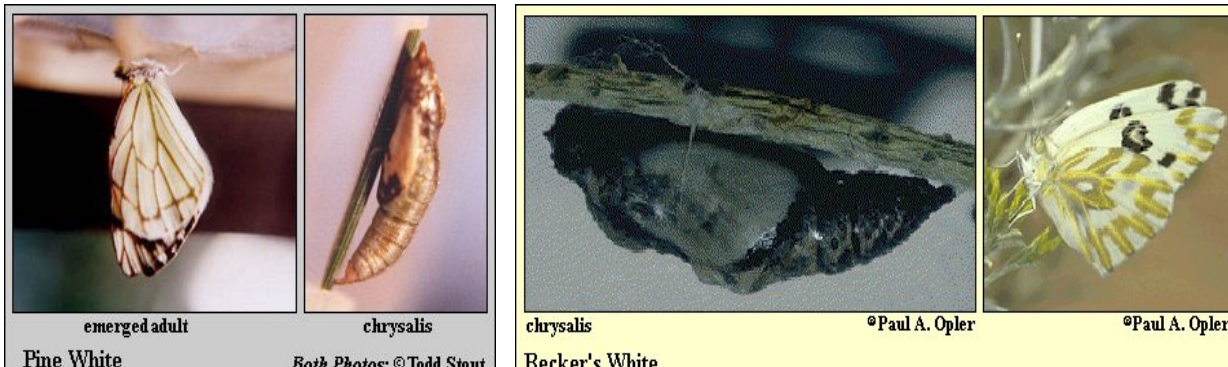
Male

Female

Whites and Sulphurs (Family Pieridae)

Whites (Subfamily Pierinae)

- [Pine White](#) (*Neophasia menapia*)
- [Becker's White](#) (*Pontia beckerii*)
- [Spring White](#) (*Pontia sisymbrii*)
- [Checked White](#) (*Pontia protodice*)
- [Western White](#) (*Pontia occidentalis*)
- [Margined White](#) (*Pieris marginalis*)
- [Cabbage White](#) (*Pieris rapae*)
- [Large Marble](#) (*Euchloe ausonides*)
- [Desert Marble](#) (*Euchloe lotta*)
- [Southwestern Orange-tip](#) (*Anthocharis thoosa*)



emerged adult

chrysalis

chrysalis

Southwestern Orange-tip

Female

Male

Sulphurs (Subfamily Coliadinae)

- [Clouded Sulphur](#) (*Colias philodice*)
- [Orange Sulphur](#) (*Colias eurytheme*)
- [Queen Alexandra's Sulphur](#) (*Colias alexandra*)
- [Southern Dogface](#) (*Zerene cesonia*)
- [Cloudless Sulphur](#) (*Phoebis sennae*)
- [Sleepy Orange](#) (*Eurema nicippe*)
- [Dainty Sulphur](#) (*Nathalis iole*)



Male

Female

Queen Alexandra's Sulphur



Female

Male

Summer Form

Winter Form

Southern Dogface

Male

Sleepy Orange

Dainty Sulphur

Gossamer-wing Butterflies (Family Lycaenidae)

Coppers (Subfamily Lycaeninae)

- [Tailed Copper](#) (*Lycaena arota*)
- [Ruddy Copper](#) (*Lycaena rubidus*)
- [Blue Copper](#) (*Lycaena heteronea*)
- [Purple Copper](#) (*Lycaena helleoides*)
- [Lilac-bordered Copper](#) (*Lycaena nivalis*)



Tailed Copper

Female

Hairstreaks (Subfamily Theclinae)

- [Coral Hairstreak](#) (*Satyrus tinus*)
- [Behr's Hairstreak](#) (*Satyrus behrii*)
- [California Hairstreak](#) (*Satyrus californica*)
- [Sylvan Hairstreak](#) (*Satyrus sylvinus*)
- [Hedgerow Hairstreak](#) (*Satyrus saepium*)
- [Western Green Hairstreak](#) (*Callophrys affinis*)
- [Brown Elf](#) (*Callophrys augustinus*)
- [Desert Elf](#) (*Callophrys fois*)
- [Western Pine Elf](#) (*Callophrys eryphon*)
- [Thicket Hairstreak](#) (*Callophrys spinetorum*)
- [Gray Hairstreak](#) (*Strymon melinus*)



male

female

Desert Elf

Blues (Subfamily Polyommattinae)

- [Western Pygmy-Blue](#) (*Brephidium exile*)
- [Marine Blue](#) (*Leptotes marina*)
- [Ceraunus Blue](#) (*Hemiargus ceraunus*)
- [Reakirt's Blue](#) (*Hemiargus isola*)
- [Western Tailed-Blue](#) (*Everes amyntula*)
- [Spring Azure](#) (*Celastrina "ladon"*)
- [Bernardino Dotted-Blue](#) (*Euphilotes bernardino*)
- [Rocky Mountain Dotted-Blue](#) (*Euphilotes ancilla*)
- [Pallid Dotted-Blue](#) (*Euphilotes pallascens*)
- [Spalding's Dotted-Blue](#) (*Euphilotes spaldingi*)
- [Arrowhead Blue](#) (*Glaucopsyche piusius*)
- [Silvery Blue](#) (*Glaucopsyche lygdamus*)
- [Melissa Blue](#) (*Lycæides melissa*)
- [Greenish Blue](#) (*Plebeius saepiolus*)
- [Boisduval's Blue](#) (*Plebeius icarioides*)
- [Shasta Blue](#) (*Plebeius shasta*)
- [Lupine Blue](#) (*Plebeius lupini*)



Western Pygmy-Blue

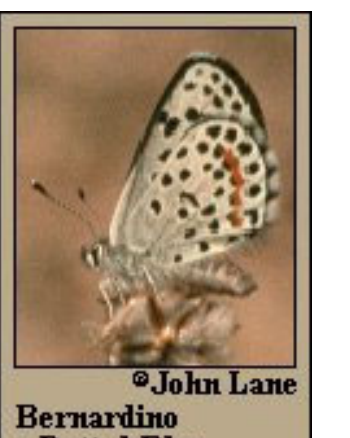
Female



Ceraunus Blue



Western Tailed-Blue



Bernardino Dotted-Blue



female

male

Melissa Blue



Greenish Blue

Female

Metalmarks (Family Riodinidae)

Mormon Metalmark (*Apodemia mormo*)



Mormon Metalmark

Brush-footed Butterflies (Family Nymphalidae)

Heliconians and Fritillaries (Subfamily Heliconiinae)

- [Variegated Fritillary](#) (*Euptoieta claudia*)
- [Great Spangled Fritillary](#) (*Speyeria cybele*)
- [Nokomis Fritillary](#) (*Speyeria nokomis*)
- [Coronis Fritillary](#) (*Speyeria coronis*)
- [Zerene Fritillary](#) (*Speyeria zerene*)
- [Callippe Fritillary](#) (*Speyeria callippe*)
- [Great Basin Fritillary](#) (*Speyeria egleis*)
- [Mormon Fritillary](#) (*Speyeria mormonia*)



Variegated Fritillary

Great Spangled Fritillary

True Brush-foots (Subfamily Nymphalinae)

- [Leanira Checkerspot](#) (*Thessalia leanira*)
- [Bordered Patch](#) (*Chlosyne lacinia*)
- [Sagebrush Checkerspot](#) (*Chlosyne acastus*)
- [Northern Crescent](#) (*Phyciodes coecyta*)
- [Field Crescent](#) (*Phyciodes pratensis*)
- [Pale Crescent](#) (*Phyciodes pallida*)
- [Mylitta](#) (*Phyciodes mylitta*)
- [Variable Checkerspot](#) (*Euphydryas chalcedona*)
- [Edith's Checkerspot](#) (*Euphydryas editha*)
- [Satyr Comma](#) (*Polygonia satyrus*)
- [Hoary Comma](#) (*Polygonia gracilis*)
- [California Tortoiseshell](#) (*Nymphalis californica*)
- [Mourning Cloak](#) (*Nymphalis antiopa*)
- [Milbert's Tortoiseshell](#) (*Nymphalis milberti*)
- [American Lady](#) (*Vanessa virginiensis*)
- [Painted Lady](#) (*Vanessa cardui*)
- [West Coast Lady](#) (*Vanessa annabella*)
- [Red Admiral](#) (*Vanessa atalanta*)
- [Common Buckeye](#) (*Junonia coenia*)
- [Tropical Buckeye](#) (*Junonia genoveva*)

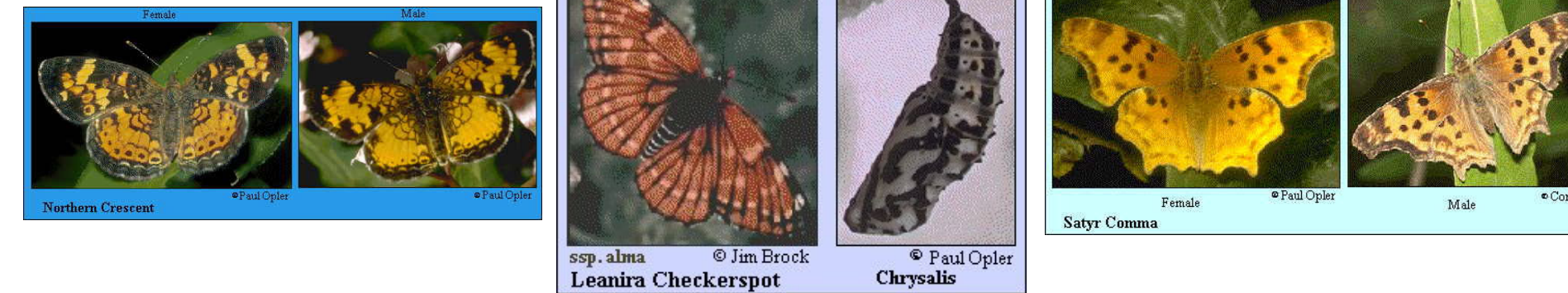


Caterpillar

Chrysalis

Bordered Patch

Top Photo: Upperside
Bottom Photo: Underside



Northern Crescent

Chrysalis



California Tortoiseshell

Tropical Buckeye

Painted Lady

caterpillar

Admirals and Relatives (Subfamily Limentitidinae)

- [Weidemeyer's Admiral](#) (*Limenitis weidemeyerii*)
- [Lorquin's Admiral](#) (*Limenitis lorquini*)
- [California Sister](#) (*Adelpha bredowii*)



Weidemeyer's Admiral

California Sister

Satyr (Subfamily Satyriinae)

- [Common Ringlet](#) (*Coenonympha tullia*)
- [Common Wood Nymph](#) (*Cercyonis pegala*)
- [Great Basin Wood Nymph](#) (*Cercyonis sthenele*)
- [Small Wood Nymph](#) (*Cercyonis oetus*)
- [Ridings' Satyr](#) (*Neominois ridingsii*)
- [Chryxus Arctic](#) (*Oeneis chryxus*)

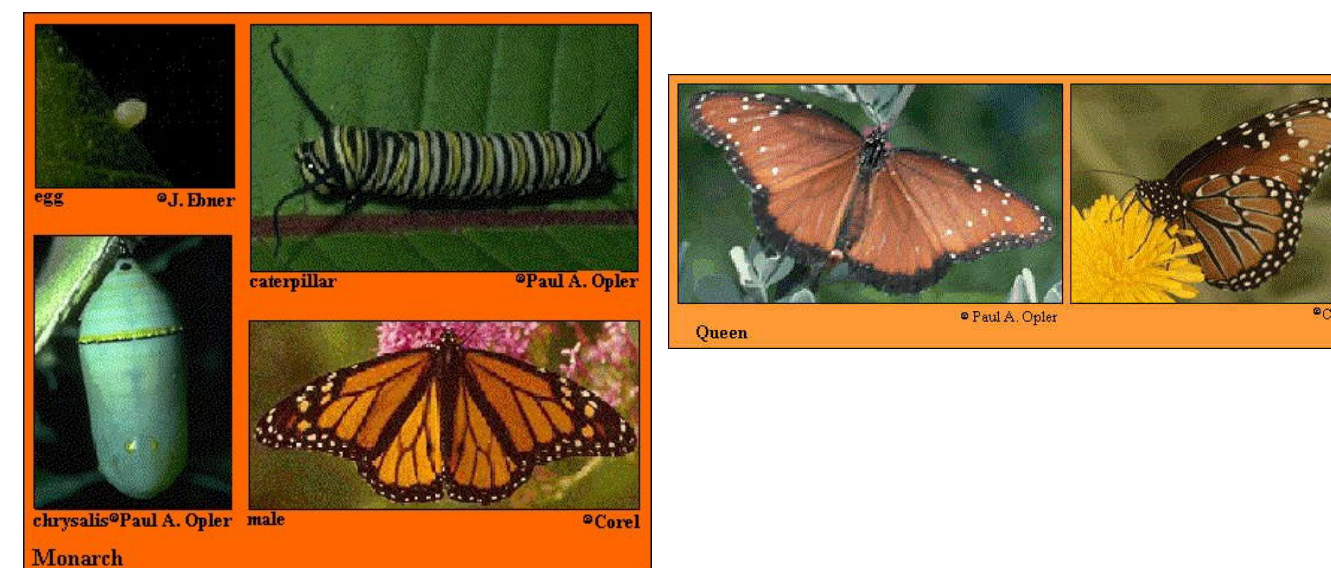


Common Wood Nymph

Ridings' Satyr

Monarchs (Subfamily Danaeinae)

- [Monarch](#) (*Danaus plexippus*)
- [Queen](#) (*Danaus gilippus*)



Monarch

Queen

Skippers (Family Hesperidae)

Spread-wing Skippers (Subfamily Pyrginae)

- [Dreamy Duskywing](#) (*Erynnis icelus*)
- [Rocky Mountain Duskywing](#) (*Erynnis telemachus*)
- [Persius Duskywing](#) (*Erynnis persius*)
- [Small Checkered-Skipper](#) (*Pyrgus scriptura*)
- [Common Checkered-Skipper](#) (*Pyrgus communis*)
- [Northern White-Skipper](#) (*Heliopterus erictorum*)
- [Mohave Sootywing](#) (*Hesperopsis libya*)



Persius Duskywing

Small Checkered-Skipper

Mohave Sootywing

Grass Skippers (Subfamily Hesperinae)

- [Fiery Skipper](#) (*Hylephila phyleus*)
- [Uncas Skipper](#) (*Hesperia uncas*)
- [Juba Skipper](#) (*Hesperia juba*)
- [Western Branded Skipper](#) (*Hesperia colorado*)
- [Pahaska Skipper](#) (*Hesperia pahaska*)
- [Sandhill Skipper](#) (*Polites sabuleti*)
- [Woodland Skipper](#) (*Ochloides sylvanoides*)
- [Yuma Skipper](#) (*Ochloides yuma*)



Uncas Skipper

Juba Skipper

Sandhill Skipper

Giant-Skippers (Subfamily Megathyminae)

- [Yucca Giant-Skipper](#) (*Megathymus yuccae*)



Yucca Giant-Skipper

Caterpillar