

INTEGRATED LOGISTICS SUPPORT PLAN  
FOR THE  
DIGITAL AIRPORT SURVEILLANCE RADAR  
MODEL 11

---

(DASR/ASR-11)



Federal Aviation Administration

*July 26, 2005*

800 Independence Avenue, SW  
Washington, DC 20591

# INTEGRATED LOGISTICS SUPPORT PLAN

## TABLE OF CONTENTS

|  |         |
|--|---------|
| <b>SECTION 1: INTRODUCTION</b>               | Page 3  |
| 1.1 Purpose                                  |         |
| <b>SECTION 2: LOGISTICS MANAGEMENT</b>       | Page 3  |
| 2.1 Points of Contact                        |         |
| <b>SECTION 3: MAINTENANCE PLANNING</b>       | Page 3  |
| 3.1 Maintenance Requirements                 |         |
| 3.2 Quantitative Design Requirements         |         |
| 3.3 Qualitative Design Requirements          |         |
| 3.4 Maintenance Concept                      |         |
| 3.5 Site Level Maintenance                   |         |
| <b>SECTION 4: SUPPLY SUPPORT</b>             | Page 5  |
| 4.1 Site Spares                              |         |
| <b>SECTION 5: SUPPORT EQUIPMENT</b>          | Page 6  |
| 5.1 Contractor Furnished Equipment (CFE)     |         |
| 5.2 Government Furnished Equipment (GFE)     |         |
| 5.3 Calibration of Test Equipment            |         |
| <b>SECTION 6: SCHEDULE A AND B EQUIPMENT</b> | Page 10 |
| 6.1 Overview                                 |         |
| 6.2 Equipment                                |         |
| <b>SECTION 7: TRAINING</b>                   | Page 16 |
| 7.1 Technician Training and Certification    |         |
| <b>SECTION 8: TECHNICAL MANUALS</b>          | Page 17 |
| 8.1 Overview                                 |         |
| APPENDIX A                                   | Page 17 |
| APPENDIX 1                                   | Page 31 |
| APPENDIX 2                                   | Page 32 |
| APPENDIX 3                                   | Page 33 |

**SECTION 1: INTRODUCTION**

1.1 Purpose

This Integrated Logistics Support Plan (ILSP) for the Digital Airport Surveillance Radar Model 11 (DASR/ASR-11) provides guidance for National Airspace Integrated Logistics Support (NAILS) planning and execution. This document is a Federal Aviation Administration (FAA) internal document that addresses various elements of logistics support and defines the Integrated Logistics Support Management Team (ILSMT) and its responsibilities.

**SECTION 2: INTEGRATED LOGISTICS SUPPORT MANAGEMENT**

2.1 Points of Contact

To ensure coordination of the logistics support efforts, an ILSMT has been established for the DASR/ASR-11. The goal of the ILSMT is to ensure that the system, when fielded, is reliable, maintainable, and supportable at the minimum life cycle cost. The ILSMT will provide guidance, coordination, and advice in logistics matters pertaining to all phases of the life cycle.

The ILSMT is comprises the following:

| <u>Function</u>   | <u>Code</u> |
|---|-------------|
| Program Manager, ASR-11: Jim Linney                                   | ATO-T       |
| Associate Program Manager for Logistics (APML): Jo Ellen Kleindienst  | ATO-T       |
| National Airway Systems Engineering Radar Branch Manager: Bob Garnett | ATO-T       |
| FAA Logistics Center Radar Product Branch Manager: Darren Jerome      | ATO-?       |
| Training: Kip Francis   | ATO-?       |

**SECTION 3: MAINTENANCE PLANNING**

This section describes the maintenance concept for the DASR/ASR-11 system. ATO-T/ASR-11 is the primary interface with other organizations regarding maintenance requirements and is responsible for overall ILS planning and implementation to include: review and oversight of maintenance plans; contract evaluation; program status evaluation; ILS management; and participation in

Procurement Readiness Review (PRR), In-Service Review (ISR) and Configuration Control Board (CCB) review processes.

### 3.1 Maintenance Requirements

The DASR/ASR-11 equipment to be provided will meet all performance and availability requirements throughout the indicated service life when the system is operated within the specified environmental, mechanical, and electrical service conditions contained in the latest version of the Digital Airport Surveillance Radar Systems Requirements Document.

### 3.2 Quantitative Design Requirements

The following requirements have been incorporated into the DASR/ASR-11 system per the Digital Airport Surveillance Radar System Specification:

|  |            |
|--|------------|
| Inherent Availability ( $A_i$ ) (PSR)                    | .99984     |
| Inherent Availability ( $A_i$ ) (MSSR)                   | .9998      |
| Mean-Time-Between-Corrective-Maintenance-Action (MTBCMA) | 1070 Hours |
| Mean-Time-To-Repair (MTTR)                               | .5 Hours   |

### 3.3 Qualitative Design Requirements

The DASR/ASR-11 system equipment will incorporate both automatic Built-In Testing (BIT) for on-line performance monitoring and manually initiated Fault Isolation Testing (FIT). Maintenance personnel will have the capability to initiate FIT.

The DASR/ASR-11 system will have the following specific capabilities:

- a. BIT/FIT detection rates must be 90% or greater to an ambiguity group of three Line Replacement Units (LRU) or less using automatic mode.
- b. BIT/FIT detection rates must be 95% or greater to one LRU using automatic and manual modes.
- c. Troubleshooting, using all available means, must achieve 100% fault isolation capability for all failures not detected and fault isolated to a single LRU using BIT/FIT.

### 3.4 Maintenance Concept

The DASR/ASR-11 system will be maintained using a two-level maintenance concept - site and depot. Site maintenance will be performed organically to the LRU level only. Depot-level repair support will be provided by either the FAA's organic repair facility or a contractor. A decision on who will provide depot level support will be made by ATO-T/ASR-11.

### 3.5 Site Level Maintenance

DASR/ASR-11 organizational level maintenance is performed onsite by the FAA maintenance specialists. This level of maintenance will consist of inspecting, testing, adjusting, cleaning, preventive maintenance, and removal/replacement of failed LRUs and designated chassis mounted components, calibration, and verification of correct spares and repair parts, and system recertification. These maintenance actions will be accomplished using BIT, standalone test measuring equipment and Technical Manuals to detect and Fault Isolate (FI), remove and replace failed LRUs and chassis-mounted components. Use of support equipment at this level will be limited. Characteristics of maintenance at this level are:

- a. Preventive maintenance on Prime Mission Equipment (PME) (radar) will be required no more than four times each year. Most preventive maintenance will be done with the DASR/ASR-11 in the operational state and without degrading system performance. Some preventive maintenance, particularly cleaning and lubrication of the rotary joint slip ring and replacement of receiver protectors, will require that the DASR/ASR-11 system be shut down. Preventive maintenance on the power systems (Engine Generator and Uninterruptible Power Supply) and heating, ventilation, and cooling (HVAC) systems will require monthly maintenance.
- b. Failed system elements will be readily identified largely through BIT, with minimum necessity for additional fault diagnosis at the site.
- c. Removal and replacement of failed LRUs.
- d. Rapid verification of operational suitability of the replaced LRUs.
- e. Rapid system certification.
- f. Documenting maintenance actions.

## **SECTION 4: SUPPLY SUPPORT**

#### 4.1 Site Spares

Site spares are limited to items that are authorized to be removed and replaced by site level technicians, and normally consist of LRUs and low-dollar, expendable items. One set of site spares will be provided for each DASR/ASR-11 system delivered. The site spares to be delivered will be based on the contractor's site spares model after verification by the FAA Spares Planning Model (SPM). *Please refer to Appendix A for ordering instructions for failed units, replenishment of site spares or consumables.*

##### **Antenna & Pedestal**

| <b>Part Name</b>               | <b>Part Number</b> |
|--------------------------------|--------------------|
| Power Supply, 70V              | G534061-2          |
| Interface Subassembly, CCA     | G581921-1          |
| PDU Circuit Breakers (one set) | TBD                |
| Compressor/Dehydrator          | 381-8002P3         |

##### **Transmitter Group**

| <b>Part Name</b>                  | <b>Part Number</b>    |
|-----------------------------------|-----------------------|
| Fan Assembly                      | G581682-2/G581682-1   |
| Fan Unit Assembly                 | G533729-1/G533889-1   |
| 1:2 Divider                       | PLG533033-1/G583130-1 |
| RF Transfer Switch                | G533074-1/G581665-1   |
| Termination Assembly (Dummy Load) | G533829-1/G533010-1   |

##### **Microwave Assy**

| <b>Part Name</b>             | <b>Part Number</b> |
|------------------------------|--------------------|
| Harmonic Absorption Filter   | G533830-1          |
| Duplexer Circulator          | G440702-1          |
| W/G Receiver Transfer Switch | G440700-1          |
| High Power Load              | G440704-1          |
| 4-Way Combiner               | G580884-1          |
| Waveguide Termination        | G533181-1          |

**REX/Signal Processor GRP**

| Part Name         | Part Number         |
|-------------------|---------------------|
| Fan Tray Assembly | G581877-1           |
| Battery Pack      | G580933-2/G584026-1 |

**MSSR & Antenna**

| Part Name            | Part Number      |
|----------------------|------------------|
| RF Changeover Switch | LA901-Y-080-000C |
| Fan                  | AU172-8-206-000A |

**SDT (ARTSIII)**

| Part Name     | Part Number     |
|---------------|-----------------|
| PWA, VME NTDS | 130-004632-P001 |

**SECTION 5: SUPPORT EQUIPMENT**

5.1 Contractor Furnished Equipment (CFE)

The following items of common support equipment required for site maintenance will be delivered by Raytheon with the system:

| EQUIPMENT NAME   | NSN              |
|--|------------------|
| Fluke 189 Multimeter                                       | 6625-01-481-8246 |
| Fluke 199C/AN Scopemeter                                   | 6625-01-494-0438 |
| Peak Power Meter, Model 8652A, Gigatronics                 | 6625-01-517-6003 |
| Peak Power Meter Sensor, Model 80350A, Gigatronics         | 6625-01-429-9277 |
| DSP Fiber Test Kit, Model 045X923, Fluke                   | 6625-01-490-1884 |
| One Touch Series II Network Assistant, Model ITS210, Fluke | 6625-01-496-8552 |
| 20dB 50W Attenuator, Various, Various (Raytheon)           | 5985-01-355-4731 |
| 10dB 10W Attenuator, Various, Various                      | 5985-01-136-2372 |

5.2 Government Furnished Equipment (GFE)



The Program Office has identified and will procure the following items of common support equipment required for site maintenance:

| EQUIPMENT NAME  | MFG          | NSN                 |
|---|--------------|---------------------|
| Network Analyzer, E5061A/250/Option 100                               | Agilent      | 6625-01-522-2737-1  |
| 50-ohm Type N Cal Kit 30 KHZ to 9 GHZ                                 | Agilent      | 6625-01-522-2734-1  |
| TVSS Test Set, Mdl 4010-01-B  | Bourns, Inc. | 6625-01-511-8080-1  |
| Red Test Cbl, Mdl 30503-01  | Bourns, Inc. | 6625-01-511-6263-1  |
| Black Test Cbl, Mdl 30503-02  | Bourns, Inc. | 6625-01-511-7645-1  |
| RF Peak Power Meter, Mdl 4400A  | Boonton      | 6625-01-476-6755-1  |
| Dual Channel Front Pnl Input, Option 01                               | Boonton      |                     |
| Peak Power Sensors (2) 56318  | Boonton      | 6625-01-465-0926-1  |
| Three-Year Extended Warranty  | Boonton      |                     |
| Type N Interconnect Kit, P/N 11716A                                   | Agilent      | 5985-01-107-7801    |
| For 8494/5/6 Series Attenuators                                       | Agilent      |                     |
| Manual Step Attenuators, P/N 8494A                                    | Agilent      | 5985-01-138-3578    |
| 0-11 dB, 1dB steps w/N (f) connectors                                 | Agilent      |                     |
| Manual Step Attenuator, P/N 8496A                                     | Agilent      | 5985-01-249-6037    |
| Option 1, 0-110 dB, 10 dB steps w/N (f) connectors                    | Agilent      |                     |
| Type N (male) to Type N (male) Cable, Mdl 11500A                      | Agilent      | 5995-00-686-4683-1  |
| Spectrum Analyzer   | Agilent      | 6625-01-0465-1844-1 |
| Laser Source (Single Mode Laser Source), Mdl LS-1310/1550 (as needed) | Fluke        | 5860-01-473-4291    |

*Please note: GFE equipment will be staged at FAALC (AML-8060) and must be ordered through LIS using the designated Project Control Number (PCN) number assigned to each site. The first sets of PCN numbers for Fiscal Year 2003 thru Fiscal Year 2005 are listed below. PCN numbers are distributed on a yearly basis because the program incrementally funds equipment purchases.*

Fiscal Year 2003:

| SITE                              | PCN NUMBER |
|-----------------------------------|------------|
| Stockton, CA (direct ship)        | ER0X       |
| Willow Grove, PA (direct ship)    | 470P       |
| West Palm Beach, FL (direct ship) | 59AB       |
| Anchorage, AK                     | SNJ3       |
| Boise, ID (direct ship)           | SJ8T       |
| Fresno, CA                        | 81CC       |
| Lincoln, NE                       | SU4Q       |
| Erie, PA                          | 8LYO       |
| Billings, MT (direct ship)        | U1Q4       |
| Merced, CA                        | 5QD1       |
| Bangor, ME                        | AU4Q       |

Fiscal Year 2004:

| SITE            | PCN NUMBER |
|-----------------|------------|
| Fairbanks, AK   | 2QXK       |
| Akron, OH       | XAC1       |
| Burlington, VT  | QF5H       |
| Lafayette, LA   | 24SV       |
| Springfield, MO | KHKH       |
| Muskegon, MI    | 2929       |
| Columbia, MO    | UXAV       |
| Lansing, MI     | 8RSE       |
| Rochester, MN   | FUYH       |
| Flint, MI       | 47DQ       |
| Columbus, GA    | EMYX       |
| 2 Spares        |            |

Fiscal Year 2005:

| SITE                  | PCN NUMBER |
|-----------------------|------------|
| Waco, TX              | 4QS5       |
| Ft. Myers, FL         | WXQV       |
| Beaumont, TX          | 7N8T       |
| Pensacola (South), FL | H60Y       |

|                               |      |
|-------------------------------|------|
| Pensacola (North), FL         | X8K5 |
| Santa Maria, CA               | 5LNR |
| Ft. Smith, AR                 | 8AC1 |
| Santa Barbara, CA             | 5YYX |
| Macon, GA                     | E9FV |
| Melbourne, FL                 | YQU0 |
| Vero Beach, FL                | 0K1J |
| Little Rock, AR               | QAC1 |
| High Desert (Edwards AFB), CA | 1PBB |
| 2 Spares                      | 4TN2 |
|                               |      |

### 5.3 Calibration of Test Equipment

- A. CFE – The initial calibration of Raytheon delivered CFE test equipment is accomplished at the vendor level. The following table details the calibration practices for each CFE unit:

| <b>CFE UNIT</b>  | <b>Calibration Practices</b>  |
|--|---|
| Fluke 189 Multimeter<br>Fluke 199C/AN Scopemeter<br>One Touch Series II Network Assistant, Model ITS210, Fluke | According to the Manufacturer at Fluke, all test equipment is calibrated to NIST (National Institute of Standards and Technology) standards and sold ready for use with no additional calibration recommended. Equipment comes with a Statement of Calibration practices and a calibration date stamped on it. The calibration of this product is not affected by storage prior to its initial receipt by the customer. Therefore the recalibration of this unit should be based on when it was put into service. |
| DSP Fiber Test Kit, Model 045X923, Fluke   | According to the Manufacturer at Fluke, all test equipment is calibrated to NIST (National Institute of Standards and Technology) standards and sold ready for use with no additional calibration recommended.  |
| Peak Power Meter, Model 8652A, Gigatronics<br>Peak Power Meter Sensor, Model 80350A, Gigatronics               | Equipment has a calibration sticker. According to the manufacturer, the equipment is calibrated to NIST standards and is usable as delivered to the site. The calibration is due 12 months after the equipment is put into service, as storage does not   |

|  |   |
|--|---|
|  | affect calibration. When the equipment is put into use, the due date on the sticker should be filled in by the user.  |
| 10dB 10W Attenuator, Various, Various<br>20dB 50W Attenuator, Various, Various | Narda: No calibration markings or paperwork.<br>Aeroflex/Winschel: Certificate of test acknowledges that the equipment has been evaluated and tested and works within its designed specifications. Aeroflex does not perform any other calibration on attenuators and states they are ready for use upon receipt. |

B. GFE – The calibration of GFE test equipment is accomplished via a joint effort between the FAALC (AML-8060) and local site personnel. Upon receipt of the test equipment from the various vendors, the FAALC will perform an on-site calibration. Following the initial GFE test equipment order in LIS, the FAALC will ensure that all GFE equipment has at least 9 months of calibration remaining, prior to the shipment of equipment to the designated site. Local site personnel are responsible for maintaining the calibration cycle after delivery to the site.

## SECTION 6: SCHEDULE A and B EQUIPMENT

### 6.1 Overview

You are requested to procure Schedule A and B equipment for use at your respective ASR-11 sites. Below is the Schedule A and B equipment list. The list specifies the equipment required to successfully perform all of the ASR-11 maintenance tasks as well as the safety equipment required for each ASR-11 location.

The estimated cost of procuring this material is approximately \$12,360. The items may be acquired locally, through the GSA or the other sources noted on the list. However, careful attention is required to ensure **ALL** safety items are purchased. They must be the described items or their equivalent, or the same type of safety item at a higher level than indicated. No safety items may be omitted from procurement or procured at a lesser level. *Please note: safety items are shaded for easier identification.*

A Project Authorization (PA) in the amount of \$12,400 will be issued for the purchase of these items approximately 60 days in advance of Contract

Acceptance Inspection (CAI). PAs are issued to regional POCs for execution.  
Please contact Jo Ellen Kleindienst at 202-385-8646 with any questions.

## 6.2 Equipment

| Item                                 | NSN/Part No./Stock No. | Estimated Cost | Notes  |
|--------------------------------------|------------------------|----------------|--------|
| <b>SCHEDULE B ITEMS</b>              |                        |                |        |
| Rope 600' 1500 lbs Breaking Strength | 4020-00-928-3438       | 23             | Note 1 |
| 5 Shelf Stand (Roll Around)          | Stock No. 798361       | 290            | Note 6 |
| 5 Shelf Stand (Roll Around)          | Stock No. 798341       | 270            | Note 6 |
| Workstation (Roll Around)            | Stock No. 798671       | 300            | Note 6 |
| Bookcase, 1 ea                       | 7110-00-601-9821       | 113            | Note 1 |
| 6' Stepladder, Fiberglass            | Stock No 3W141         | 91             | Note 1 |
| 4' Stepladder, Fiberglass            | Stock No 3W421         | 76             | Note 1 |
| 28' Extension Ladder                 | Stock No 3W140         | 282            | Note1  |
| Roller Cabinet 6 Drawer for Tools    | Stock No 2W025         | 226            | Note 1 |
| Convertible Hand Truck               | Stock No 4W323         | 129            | Note 8 |
| Vacuum, 16 Gal Blower, Wet/Dry       | Stock No 6H005         | 150            | Note 8 |
| Soldering Station                    | Stock No 3MA15         | 195            | Note 8 |
| Oil Filter Wrench (2 13/16-3 5/32)   | Stock No 4F376         | 7              | Note 1 |
| Tool Bag                             | Stock No 5LL47         | 48             | Note 8 |
| Heat Gun                             | Stock No 4A162         | 43             | Note 8 |
| Crimping Tool                        | Stock No 3KH52         | 32             | Note 1 |
| 18V Cordless Drill Kit, ½ Dr         | Stock No 4EB31         | 270            | Note 8 |
| Portable Heater                      | 5H819                  | 42             | Note 8 |

| <b>Item</b>                               | <b>NSN/Part No./Stock No.</b> | <b>Estimated Cost</b> | <b>Notes</b> |
|---|-------------------------------|-----------------------|--------------|
| Two-Way Radio (4 each)                    | 1WC84                         | 169 ea                | Note 8       |
| Marker/Paint                              | 7520-01-207-4167              | 14                    | Note 1       |
| LED Headlamp, for Hard Hat                | Stock No. 96037               | 35                    | Note 2       |
| All Weather Extension Cord<br>50 feet (2) | Stock No. 3UY38               | 60 ea                 | Note 8       |
| MTI Reflector Battery Charger             | Part No. 11095-2              | 175                   | Note 7       |
| Florescent Hand Lamp                      | Stock No. 5X409               | 31                    | Note 8       |
| <b><i>SAFETY ITEMS</i></b>                |                               |                       |              |
| Goggles 3 ea                              | 4240-00-052-3776              | 2 ea                  | Note 1       |
| Face Shield                               | Stock No. 4RF24               | 18                    | Note 1       |
| Helmet Safety (4ea)                       | Stock No. 4T155 (4ea)         | 6 ea                  | Note 8       |
| Face Shield Frame (2 ea)                  | Stock No. 4LN58               | 10 ea                 | Note 8       |
| Visor, Acetate (2 ea)                     | Stock No. 1LN60               | 7 ea                  | Note 8       |
| Positioning Assembly                      | Stock No. 5WG68               | 54                    | Note 1       |
| 5 Gal safety Can, Type 1                  | Stock No. 6AW03               | 31                    | Note 1       |
| Elastic Chin Strap (4ea)                  | Stock No 6AJ29                | 6 ea                  | Note 1       |
| Snake Bite Kit                            | Stock No 5AC32                | 7                     | Note 8       |
| Static Control Kit                        | Stock No 4KK45                | 62                    | Note 1       |
| Lockout Safety Kit                        | Stock No 5U714                | 76                    | Note 1       |
| Square D Breaker Lockout (4ea)            | Item # 74646                  | 18 ea                 | Note 2       |
| 5' Rope Lanyard                           | Stock No 1D851                | 42                    | Note 1       |
| MSDS Large Binder w36" Chain              | Stock No 3ZM63                | 14                    | Note 1       |

| Item  | NSN/Part No./Stock No. | Estimated Cost | Notes  |
|---|------------------------|----------------|--------|
| First Aid Kit (3 ea)                                    | Stock No 5M579         | 29 ea          | Note 1 |
| CPR Kit (3 ea)  | Stock No 5M581         | 28 ea          | Note 1 |
| Emergency Burn Kit                                      | Stock No 3T956         | 49             | Note 1 |
| Emergency Response Kit (3 ea)<br>(Blood Borne/Pathogen) | Stock No 1N734         | 32 ea          | Note 8 |
| Portable Pressurized Eye Wash Unit                      | Stock No 4T004         | 754            | Note 1 |
| Lineman's Gloves (3 pr) Class 1<br>14" Class 1, Size 9  | 5T945                  | 70             | Note 1 |
| 14" Class 1, Size 10                                    | 5T946                  | 70             |        |
| 14" Class 1, Size 11                                    | 5T947                  | 70             |        |
| 14" Glove Bag   | 4T498                  | 26             | Note 1 |
| Leather Protector Gloves, 9"<br>Size 9                  | 4T491                  | 31             | Note 8 |
| Size 10   | 4T557                  | 31             |        |
| Size 11   | 4T558                  | 31             |        |
| Fall Arrest Harness                                     | Stock No 1D814         | 70             | Note 1 |
| Lanyard 5' (2ea)  | Stock No 1D806         | 52 ea          | Note 1 |
| Ear Muffs 2 ea  | Stock No 5FV26         | 22 ea          | Note 8 |
| Neoprene Gloves Size 10 (3ea)                           | Stock No 4T432         | 7 ea           | Note 8 |
| Petroleum Spill Response Kit                            | Stock No 5F834         | 155            | Note 1 |
| Emergency Spill Kit<br>(Oil, Water, Chemical)           | Stock No 3AP01         | 53             | Note 1 |
| Insulated Open End Wrench Set,<br>Standard              | Stock No. 5MK92        | 153            | Note 1 |
| Insulated Open End Wrench Set,<br>Metric                | Stock No. 5MK93        | 168            | Note 1 |

| Item   | NSN/Part No./Stock No. | Estimated Cost | Notes  |
|--|------------------------|----------------|--------|
| Insulated 10-pc Socket Set, Standard, W/ 3/8 Dr Ratchet Handle and Extensions. | Stock No. 5MK88        | 383            | Note 1 |
| Insulated 10-pc Socket Set, Metric, W/ 3/8 Dr Ratchet Handle and Extensions.   | Stock No. 5MK89        | 383            | Note 1 |
| 10" Adjustable Wrench, Insulated   | Stock No. 5MK50        | 34             | Note 1 |
| 6-Piece Insulated Screwdriver Set, Slotted & Phillips                          | Stock No.5LW89         | 33             | Note 1 |
| Battery Safety Kit   | Stock No 3ZM54         | 92             | Note 1 |
| Foam Ear Plugs, Box  | Stock No 6T545         | 29             | Note 1 |
| Steel Oily Waste Can, 6 gal  | Stock No 29193         | 54             | Note 2 |
| Rechargeable Flashlight  | Stock No 4CE85         | 77             | Note 1 |
| Electrical Safety Mat  | Stock No. 5T434        | 194            | Note 1 |
| Insulating Blanket 12X 36"   | No. 87505              | 99             | Note 2 |
| Insulating Blanket 36X36"  | No. 87506              | 128            | Note 2 |
| Orange Safety Cone (4)   | No. 13960OR            | 41 ea          | Note 2 |
| Safety Cone Plastic Chain (2)  | No. 31914              | 29 ea          | Note 2 |
| Portable Emergency Tote Light  | No. 91690              | 192            | Note 2 |
| <b>SCHEDULE A ITEMS</b>  |                        |                |        |
| Electrician Pocket Knife   | 5110-00-240-5943       | 12             | Note 1 |
| Rubber Mallet  | 5120-00-293-3399       | 9              | Note 1 |
| Grease Gun   | Stock No 5JF47         | 27             | Note 1 |



| Item   | NSN/Part No./Stock No. | Estimated Cost | Notes  |
|--|------------------------|----------------|--------|
| Socket Set, 3/8 Dr SAE/Metric<br>(Includes 9 req & deep std sockets,<br>Rev Ratchet, 3" & 6" Ext, Universal<br>Joint, Case)                            | Stock No 5C875         | 123            | Note 1 |
| Metric Socket Set, Deep, 6 Pt ,3/8 Dr<br>(Clips and rail, 12 deep sockets)   | Stock No 4JW20         | 52             | Note 1 |
| Metric Socket Set<br>(Std, Clip and rail, 12 sockets, 8-<br>19mm)  | Stock No 1AC92         | 39             | Note 1 |
| Socket set, 1/2 in Dr SAE<br>(Includes Rev Ratchet, 5" & 10" Ext,<br>Speed & Hinge Handles, Universal<br>Joint, Case)                                  | Stock No 1AF11         | 168            | Note 1 |
| Metric Socket Set, 12 pt, 1/2 Dr<br>(Clips and rail, 15 std sockets)   | Stock No 5C902         | 67             | Note 1 |
| Socket Set, 3/4 Dr<br>(Includes Rev Ratchet, 20 sockets, 7/8<br>thru 2 3/8", 4, 8 and 16" Ext., Sliding<br>T-Handle, Universal Joint, Hinge<br>Handle) | Stock No 6A540         | 660            | Note 1 |
| Speed Handle, 3/8 Dr.  | Stock No 1AH72         | 12             | Note 1 |
| 1/2" Size, Deep, 6 Pt, 1/2 Dr. Socket  | Stock No 1AN93         | 7              | Note 1 |
| 15/16" Size, Deep, 6 Pt, 1/2 Dr. Socket  | Stock No 1AP01         | 9              | Note 1 |
| Hex Bit Set, 3/8 & 1/2 Dr  | Stock No 1AF36         | 65             | Note 1 |
| Combination Wrench Set, Metric<br>(7 thru 21mm)  | Stock No 1AKP0         | 149            | Note 1 |
| Combination Wrench Set, SAE<br>(5/16 thru 1 1/4")  | Stock No 6A541         | 302            | Note 8 |
| Wrench, Open-end, Metric<br>Midget 5.5mm   | Stock No. 5739A1       | 10             | Note 5 |

| Item  | NSN/Part No./Stock No. | Estimated Cost | Notes  |
|---|------------------------|----------------|--------|
| Wrench, Open-end, Metric 24mm   | Stock No 1ALN8         | 19             | Note 1 |
| Wrench, Open-end, Metric 30mm   | Stock No 1ALP4         | 29             | Note 1 |
| Wrench, Open-end, Metric 32mm   | Stock No 1ALP5         | 33             | Note 1 |
| Wrench, Open-end, Metric 36mm   | Stock No 1ALP6         | 44             | Note 1 |
| Adjustable Wrench, 6"   | Stock No 6X314         | 13             | Note 8 |
| Adjustable Wrench, 12"  | Stock No 6X317         | 21             | Note 1 |
| Adjustable Wrench, 18"  | Stock No 2A490         | 66             | Note 1 |
| Extra Thin Open End Wrench 13/16-7/8                                      | Stock No 1ANN2         | 10             | Note 1 |
| Offset Wrench, 12 pt, 2 1/4"  | Stock No 1ALF1         | 116            | Note 1 |
| Torque Wrench, 0-50ft lbs, 3/8" Dr, Dial Indicator w/Cert of Calibration  | Stock No 4JW64         | 112            | Note 1 |
| Torque Wrench, 1/2 Dr, 0-250ft lbs, Dial Indicator w/Cert. Of Calibration | Stock No 4JW66         | 160            | Note 1 |
| Torque Wrench, SMA  | P/N 2098-5065-54       | 265            | Note 4 |
| Combination Screwdriver Set (4 Phillips, 4 Slotted)                       | Stock No 3MM52         | 25             | Note 1 |
| Screwdriver Set, Torx   | Stock No 5LX16         | 30             | Note 8 |
| Screwdriver, 12" Long, Blade  | Stock No. 6C260        | 8              | Note 1 |
| Hex Key Set, 11-Pc, SAE, Std  | Stock No 1A448         | 4              | Note 8 |
| Hex Key Set, 9-pc, Metric, Std  | Stock No 5LM68         | 6              | Note 1 |

| Item  | NSN/Part No./Stock No.                       | Estimated Cost | Notes  |
|---|--|----------------|--------|
| Hex Key Set, 9-Pc, SAE, Long  | Stock No 4NB50                               | 16             | Note 8 |
| Hex Key Set, 9-Pc, Metric, Long   | Stock No 5LM70                               | 8              | Note 1 |
| Ball-Hex Key Set, SAE, Long, 13-Pc  | Stock No 3A594                               | 14             | Note 1 |
| Ball-Hex Key Set, Metric, Long, 9-Pc  | Stock No 1ATF7                               | 12             | Note 1 |
| Locking Pliers Set<br>(5" Curved, 10" Curved, 7" Straight,<br>6" Long Nose) | Stock No 6C667                               | 37             | Note 1 |
| Pliers Set<br>(Linesmen, Diagonal, Needle Nose)                             | Stock No 5MC46                               | 48             | Note 1 |
| Ball Peen Hammer, 16 oz   | Stock No 6R285                               | 15             | Note 1 |
| Rubber Mallet, 16 oz  | Stock No 4A119                               | 18             | Note 8 |
| Punch & Chisel Set, 12-Pc   | Stock No 4BU63                               | 45             | Note 8 |
| Torpedo Level   | Stock No 3KU73                               | 17             | Note 1 |
| Drill Bit Set, 19-Pc  | Stock No 1UG92                               | 28             | Note 8 |
| Crowfoot, 11/6", 3/8" Dr  | Stock No 1AL97                               | 7              | Note 1 |
| Hand Carry Quartz Light   | Stock No 4VM72                               | 20             | Note 8 |
| Extractor Tool  | P/N M81969/19-02<br>NSN 5120-00-133-0098     | 25             | Note 1 |
| Hydraulic Lift Truck  | P/N 260038<br>Model #SPL-60-3032             | 1082           | Note 1 |
| Insertion Tool  | P/N M81969/17-<br>02NSN 5120-01-408-<br>4371 | 45             | Note 1 |
| Stool, Rolling, 500lb   | Stock No. 4KK11                              | 61             | Note 8 |

Note 1:  
GSA

Note 3:  
Agilent Technologies, Inc.

GSA Customer Supply Center  
Boulevard  
National Processing Center  
8400 Tatum Road  
Palmetto, GA 30268  
800-525-8027  
www.fss.gsa.gov

5301 Stevens Creek  
Santa Clara, CA 95052  
GSA Contract # GS-24F-0806A  
www.agilent.com

Note 2:  
Lab Safety Supply  
401 South Wright Road  
Janesville, WI 53546  
Material Handling Catalog  
Orders: 800-0356-0783  
Technical Support: 800-356-2501  
www.labsafety.com

Note 4:  
Microwave Distributors Company  
500 Johnson Avenue, Suite A  
Bohemia, NY 11716-2675  
631-589-8000/800-637-4353  
www.microwavedistributors.com

Note 5:  
McMaster-Carr  
Mechanisms, Inc.  
Various Locations in US  
1-630-600-3600  
www.mcmaster.com

Note 7:  
Rotating Precision  
8750 Shirley Avenue  
Northridge, CA 91324  
818-349-8680  
www.rpm-psi.com

Note 6:  
Local Office Depot/Staples/ etc.

Note 8:  
Grainger  
Please check www.grainger.com for  
nearest location

## SECTION 7: TRAINING

### 7.1 Technician Training and Certification

Technicians are required to complete a two step training process in order to acquire certification authority. The first step is the completion of the Hardware Maintenance Course.

The ASR-11 Hardware Maintenance Course consists of directed study materials (course # 44329) to be completed at the maintainer's facility and a resident laboratory portion (course # 42069) conducted at the FAA Academy in Oklahoma City, OK. The directed study material will include theory of operations as well as Operator Maintenance Terminal (OMT) and Controller Monitoring System (CMS) simulation to learn control, maintenance and troubleshooting functions of the system. The directed study materials will take 2 weeks (80 hours) to complete. The resident laboratory course will test the technician's knowledge of the directed study materials, teach them the maintenance tasks required and evaluate their troubleshooting skills. The resident lab will take 4 weeks (160 hours) to complete. Quota assignments for these courses are determined by the regional training coordinators and ATO-W Training Division during the annual quota review. Completion of the ASR-11 Hardware Maintenance Course should be no earlier than 6 months prior to Initial Operating Capability (IOC). Sites should target having one (1) technician trained by IOC, and a total of three trained by commissioning. Prerequisites for the Hardware Maintenance Course are Common Principles for Radar Technicians (#40392), Secondary Radar Principles Theory (#40320), and UNIX (#40423).

The second step of the personal certification authority process is formal OJT, which will further develop requisite skills, and prepare the Technician for the Performance Exam (PE) required for certification. The OJT module will take 3 weeks (120 hours: 50 study hours, 70 hours of instructional time), and the Performance Exam (RP114) will take 54 hours. The Technician has 120 days upon completing the Resident Course (# 42069), to complete both the OJT and the PE. Sites should target to have at least one certified technician by commissioning, or have a certified technician from the SMO or other site available to certify the radar. Every effort must be made to complete the OJT and PE prior to IOC.

## **SECTION 8: TECHNICAL MANUALS**

### **8.1 Overview**

A complete set of technical instruction books are delivered with each ASR-11 system. *Please see Appendix A for a listing of the manuals.*

APPENDIX A

**NOTICE**

U.S. DEPARTMENT OF TRANSPORTATION  
FEDERAL AVIATION ADMINISTRATION

N 6310.64

Cancellation  
Date:

**SUBJ:** DIGITAL AIRPORT SURVEILLANCE RADAR SYSTEM SUPPLY SUPPORT  
PROCEDURES- Revison 1

---

**1. PURPOSE.** This notice announces the Digital Airport Surveillance Radar System (DASR) site and depot interim maintenance procedures for the removal and replacement of Line Replaceable Units (LRUs).

**2. DISTRIBUTION.** This notice is distributed to Division Level in the Air Traffic Organization, Terminal (ATO-T), FAA Academy, FAA Logistics Center, FAA Technical Center, and all DASR sites, both DoD and FAA, which are installed during the period of effectiveness of this notice.

**3. OPERATIONAL APPROACH.**

The U.S. Air Force is the lead acquisition agency for the DASR while the FAA will provide the life-cycle coordination and support for all users of the system. Users include the FAA, Air Force, Navy and Army. The maintenance concept for the DASR is a two level approach, site and depot. Site maintenance will be performed organically to the Line Replaceable Unit (LRU) level. Life-cycle depot level repair support will be provided by the contractor, Raytheon, on an interim basis until the organic depot capability is established at the Mike Monroney Aeronautical Center in Oklahoma City, OK.

- a. Prior to Contractor Acceptance and Inspection (CAI) at any given site, Raytheon, (the Contractor) will control handling and repair of all DSAR LRU failures in accordance with their own internal operational procedures.
- b. Initially and after CAI, the Prime Contractor will provide Interim Contractor Depot Level support (ICDLS) for all operational sites.

If, for any reason, FAA or Department of Defense (DOD) site personnel encounter problems concerning services with regard to these depot procedures please contact the following individuals via e-mail or by phone:

| Name/Code                                    | Phone        | E-Mail Address   |
|--|--------------|--|
| Jo Ellen Kleindienst/DASR<br>APML<br>ARN-300 | 202-493-4229 | <a href="mailto:jo.e.kleindienst@faa.gov">jo.e.kleindienst@faa.gov</a> |
| George Morrison/MPL<br>Support<br>BAESYSTEMS | 202-548-3749 | <a href="mailto:george.morrison@saic.com">george.morrison@saic.com</a> |
|  |              |  |

**4. SITE SPARES.** Site spares are limited to items that are authorized to be removed and replaced by site level technicians, and normally consist of LRUs and low-dollar expendable items.

- a. Each FAA/DoD site will receive a set of site spares from Raytheon prior to CAI. LRU site configuration is available in Technical Instruction Book (TIB) TI 6310.47, DSAR System Operation and Maintenance Instructions.
- b. The Contractor's Interim Depot will configure each site spare and replacement LRU with the appropriate approved software revision and firmware.

**5. DSAR PROCEDURES FOR REPLACING A FAILED LRU.**

**a. Sites:** FAA/DoD procedures are as follows:

- (1) Fault isolate to the LRU level and replace the failed LRU with a site spare, if available. Save packing material.

- (2) FAA: Order replacement parts via the established Logistics and Inventory System (LIS) procedures
  - DoD: Order replacement parts via established MILSTRIP procedures.

**NOTE: To ensure material is received as required, please contact the FAA Customer Care Center at 405-954-3793 or 1-888-322-9824, if a Priority 1 order is placed after normal duty hours or on week-ends.**

- (3) Upon receipt of the replacement LRU, package the failed LRU in the same shipping container return the failed LRU. **The failed LRU must be returned within 5 working days.**

- (4) Return the failed LRU by any traceable means to the following address:

RAYTHEON SYSTEMS COMPANY  
DSAR PROGRAM  
ATTN: GRADY HATCHETT  
2555 ELLSMERE AVENUE  
NORFOLK, VA 23513  
FAX: 757-852-2114

- (5) Report all maintenance activities in the Maintenance Management System (MMS) to the module level and record the module serial number in the module serial number field of the corrective maintenance log.

If difficulties are incurred during the replacement part ordering process, the following is a list of DASR/ASR-11 Points of Contact at the FAA Logistics Center in Oklahoma City, OK:

|                                      |                      |              |
|--------------------------------------|----------------------|--------------|
| 24 Hour Service<br>or 1-888-322-9824 | Customer Care Center | 405-954-3793 |
|--------------------------------------|----------------------|--------------|

|                              |              |                |                           |
|------------------------------|--------------|----------------|---------------------------|
| Normal Duty Hours<br>Manager | 405-954-5309 | Kim Shepherd   | Item                      |
|                              |              | Kim Hare       | Provisioning 405-954-9014 |
|                              |              | Lynn Garst     | Engineer 405-954-8083     |
|                              |              | Jim VanBuskirk | Terminal Branch           |
| Chief                        | 405-954-7410 |                |                           |

**b. Raytheon.**



Upon receipt of the web based notification, Raytheon will ship a replacement LRU directly to the designated address as provided by the site in accordance with the priority level guidance established in paragraph 6. Raytheon will ship the replacement LRU in a reusable shipping container and the site will be provided a FEDX account number for return shipping of the failed LRU.

**FIELD REPLACEABLE UNITS (FRUs).** The following table lists the DASR/ASR-11 FRUs in National Stock Number (NSN) order. This list is for information only, the parts lists contained within the system maintenance manuals are the most current and should be used when ordering replacement items. This information can also be found at:

<http://www.faa.gov/ats/atb/sectors/surveillance/asr11/restricted/index.c>

**6. DASR/ASR-11 Field Replaceable Units (FRUs)**  
3/30/05

| National Stock Number (NSN) | Item Name                                 | Manufacturer's Part Number | CAGE Code |
|-----------------------------|---|----------------------------|-----------|
| 2910-01-498-4786            | FILTER, OIL                               | PA-223673                  | 67271     |
| 2940-01-446-6150            | FILTER, FUEL                              | PA-223953                  | 67271     |
| 2940-01-527-1047            | FILTER, AIR                               | SK3173100                  | 09PJ2     |
| 3030-01-527-3475            | SET, BELT                                 | 223959                     | 67271     |
| 3030-01-527-3860            | SET, BELT                                 | GM-19306                   | 67271     |
| 3040-01-528-7667            | PINION ASSEMBLY LIP SEAL HOUSING C/W SEAL | 174854-3                   | 35844     |
| 3040-01-528-7683            | PINION ASSEMBLY LIP SEAL HOUSING C/W SEAL | 174854-4                   | 35844     |
| 3040-01-528-7686            | PINION ASSEMBLY LIP SEAL HOUSING C/W SEAL | 174854-2                   | 35844     |
| 3130-01-528-7783            | BEARING/BULLGEAR                          | 174669                     | 35844     |
| 3439-01-528-7980            | SURFACE HEATER                            | 174839                     | 35844     |
| 4020-01-528-7987            | O-RING CORD                               | 174903                     | 35844     |
| 4130-01-512-                | COMPRESSOR DEHYDRATO                      | 53426                      | 3T286     |

| National Stock Number (NSN) | Item Name                   | Manufacturer's Part Number | CAGE Code |
|-----------------------------|-----------------------------|----------------------------|-----------|
| 7560                        |                             |                            |           |
| 4130-01-527-3471            | FILTER, AIR 16" X 20" X 1"  | 1W099                      | 25795     |
| 4130-01-527-3472            | FILTER, AIR, 20" X 25" X 2" | 1W100                      | 25795     |
| 4130-01-527-3473            | FILTER, AIR, 16" X 25" X 2" | 1W102                      | 25795     |
| 4130-01-527-3766            | FILTER, AIR, 20" X 30" X 1" | 5C461                      | 25795     |
| 4130-01-527-3767            | FILTER, INTAKE LOUVER       | 6B937                      | 25795     |
| 4130-01-527-3769            | FILTER, INTAKE LOUVER       | 6B952                      | 25795     |
| 4130-01-527-3770            | FILTER, INTAKE LOUVER       | 6B969                      | 25795     |
| 4130-01-527-3771            | FILTER, INTAKE LOUVER       | 6B977                      | 25795     |
| 4130-01-527-3776            | FILTER, AIR                 | 901930/482                 | K0268     |
| 4130-01-527-4057            | FILTER, AIR                 | PA-253108                  | 67271     |
| 4130-01-527-4118            | FILTER                      | RIF-1                      | 3B196     |
| 4140-01-486-0453            | FAN, CENTRIFUGAL            | AU172-8-206-000A           | K0268     |
| 4140-01-486-0455            | FAN, CENTRIFUGAL            | AU175-8-060-614A           | K0268     |
| 4140-01-512-6049            | FAN TRAY ASSY               | G581878-1                  | 09675     |
| 4140-01-522-4928            | FAN TRAY ASSY               | G581877-1                  | 09675     |
| 4140-01-522-4959            | FAN UNIT ASSY               | G533729-1                  | 09675     |
| 4140-01-522-5193            | FAN ASSY                    | G581682-1                  | 09675     |
| 4140-01-527-1579            | FAN, REAR, 12VDC, 40CF      | 560-001375-P002            | 1EG52     |
| 4140-01-527-1579            | FAN, REAR, 12VDC, 40CF      | 560-001375-P002            | 1EG52     |
| 4140-01-527-3438            | FAN, CIRCULATOR ASSY FAN    | 028423                     | 2S894     |
| 4520-01-528-7745            | CARTRIDGE HEATER            | 174838-1                   | 35844     |

| <b>National Stock Number (NSN)</b> | <b>Item Name</b>                 | <b>Manufacturer's Part Number</b> | <b>CAGE Code</b> |
|------------------------------------|----------------------------------|-----------------------------------|------------------|
| 4520-01-528-7747                   | CARTRIDGE HEATER                 | 174838-2                          | 35844            |
| 4720-01-527-3476                   | HOSE, RADIATOR                   | 336664                            | 67271            |
| 4720-01-527-3479                   | HOSE, RADIATOR                   | 336878                            | 67271            |
| 4720-01-527-4058                   | HOSE, RADIATOR                   | PA-273443                         | 67271            |
| 4720-01-527-4060                   | HOSE, RADIATOR                   | PA-273444                         | 67271            |
| 4730-01-528-7736                   | PLUG, PIPE, 3/8 NPT              | 174881-8                          | 35844            |
| 4730-01-528-7961                   | COUPLING                         | 174890-1                          | 35844            |
| 4730-01-528-7965                   | PLUG                             | 175013                            | 35844            |
| 4920-01-527-1381                   | PANEL, FMAC INTERFAC             | G584166-2                         | 09675            |
| 4920-01-527-1381                   | PANEL, FMAC INTERFAC             | G584166-2                         | 09675            |
| 5210-01-528-769                    | LEVEL                            | 174852                            | 35844            |
| 5305-01-528-7710                   | SCREW, NYLON SOCKET HEAD         | 174983                            | 35844            |
| 5310-01-528-7991                   | SEALING WASHER                   | 174962                            | 35844            |
| 5315-01-528-7716                   | KEY, 5/8 IN SQ, 2.75 IN LG       | 174916-1                          | 35844            |
| 5315-01-528-7725                   | KEY, 3/8, 5/16 IN SQ, 1.31 IN LG | 174916-2                          | 35844            |
| 5315-01-528-7728                   | KEY, 3/8, 5/16 IN SQ, 2.87 IN LG | 174916-3                          | 35844            |
| 5330-01-484-0767                   | GASKET                           | PA-223762                         | 67271            |
| 5330-01-528-7964                   | FELT SEAL                        | 174904                            | 35844            |
| 5330-01-528-7991                   | SPEEDI-SLEEV                     | 174821-2                          | 35844            |
| 5331-01-527-1590                   | O-RING, PINION                   | AS-568A-447-70FS                  | 35844            |
| 5331-01-528-7775                   | O-RING                           | 10683-527                         | 35844            |
| 5331-01-528-7983                   | O-RING                           | 10683-475                         | 35844            |

| <b>National Stock Number (NSN)</b> | <b>Item Name</b>     | <b>Manufacturer's Part Number</b> | <b>CAGE Code</b> |
|------------------------------------|----------------------|-----------------------------------|------------------|
| 5340-01-528-7972                   | HAND CRANK           | 174843                            | 35844            |
| 5820-01-486-0152                   | RECEIVER SUBASSEMBL  | 807891/001                        | K0268            |
| 5820-01-512-6724                   | RF ASSY              | G584050-1                         | 09675            |
| 5840-01-512-6055                   | DRIVER MODULE        | 807888/005                        | K0268            |
| 5840-01-512-6063                   | TX INTERFACE ASSY    | 807890/010                        | K0268            |
| 5840-01-512-6158                   | RX INTERFACE ASSY    | 807899/002/000                    | K0268            |
| 5840-01-512-7505                   | CCA, TX STATUS       | G533041-1                         | 09675            |
| 5840-01-512-7509                   | CCA, TX RF MONITOR   | G584175-3                         | 09675            |
| 5840-01-522-4950                   | PANEL, AC DISTR      | G533027-2                         | 09675            |
| 5840-01-527-1103                   | RECEIVER PROTECTOR   | G581764-1                         | 09675            |
| 5840-01-527-1392                   | DETECTOR ASSY, VIDEO | G584590-1                         | 09675            |
| 5840-01-527-1394                   | VIDEO DETECTOR ASSY  | G584591-1                         | 09675            |
| 5840-01-527-1444                   | SDT A PROCESSOR      | 130-009393-G001                   | 1EG52            |
| 5840-01-527-1450                   | SDT B PROCESSOR      | 130-009393-G002                   | 1EG52            |
| 5840-01-527-1578                   | KIT, MAINTENANCE     | 46789-501                         | 93929            |
| 5841-01-512-6173                   | TRANSPONDER          | 808460/001                        | K0268            |
| 5841-01-512-6181                   | CONTROL PANEL ASSY   | G584241-1                         | 09675            |
| 5841-01-512-6181                   | CONTROL PANEL ASSY   | G584241-3                         | 09675            |
| 5865-01-512-6735                   | CCA, TX CONTROL      | G533040-2                         | 09675            |
| 5865-01-512-6746                   | ENCODER, OPTICAL     | G533616-1                         | 09675            |
| 5895-01-486-0368                   | RF CHANGEOVER UNIT   | 808449/054                        | K0268            |
| 5895-01-512-                       | KEYBOARD             | G584021-11                        | 09675            |

| National Stock Number (NSN) | Item Name                   | Manufacturer's Part Number | CAGE Code |
|-----------------------------|-----------------------------|----------------------------|-----------|
| 6723                        |                             |                            |           |
| 5895-01-512-6755            | DRIVER MODULE, RF           | G584072-3                  | 09675     |
| 5895-01-512-6823            | DOWNCONVERTER MODAS         | G584054-1                  | 09675     |
| 5895-01-512-6886            | UPCONVERTER MODULE          | G584549-1                  | 09675     |
| 5895-01-512-7429            | STABILITY MONITOR           | G533307-101                | 09675     |
| 5895-01-522-5165            | DIVIDER, RF, 4-WAY          | G580884-1                  | 09675     |
| 5895-01-527-0785            | MODEM, DSU/CSU              | DDS/MR64                   | 04713     |
| 5895-01-527-1104            | LIMITER, POWER, RF          | G581766-1                  | 09675     |
| 5895-01-527-1398            | MODEM, 2.4KBPS              | SRM-5A/M/RJ-45/NEW         | 39941     |
| 5895-01-527-1402            | MODEM, 2.4KBPS              | SRM-5A/F/RJ-45/NEW         | 39941     |
| 5895-01-527-1571            | TRANSCEIVER, 10BASE-T       | 321-004565-P002            | 1EG52     |
| 5895-01-527-1571            | TRANSCEIVER, 10BASE-T       | 321-004565-P002            | 1EG52     |
| 5895-01-527-1592            | ROUTER, ETHERNET            | CISCO1602                  | 0GX96     |
| 5915-01-522-5188            | FILTER ASSY, SWITCHI        | G584550-X                  | 09675     |
| 5920-00-177-2148            | FUSE, CARTRIDGE             | 226-8007P33                | 09675     |
| 5920-00-284-9220            | FUSE, CARTRIDGE             | 226-8006P19                | 09675     |
| 5920-00-285-0903            | FUSE, CARTRIDGE             | 226-8007P29                | 09675     |
| 5920-00-735-0783            | FUSE, CARTRIDGE             | 226-8007P32                | 09675     |
| 5920-00-823-0624            | FUSE, CARTRIDGE             | 226-8007P27                | 09675     |
| 5920-01-028-5727            | FUSE, CARTRIDGE             | 226-8006P27                | 09675     |
| 5920-01-318-5923            | FUSE, MAINTENANCE BYPASS SW | FNQ-R-1/4                  | 71400     |
| 5920-01-319-2987            | FUSE, MAINTENANCE BYPASS SW | FNQ-R-1                    | 71400     |

| National Stock Number (NSN) | Item Name                    | Manufacturer's Part Number | CAGE Code |
|-----------------------------|------------------------------|----------------------------|-----------|
| 5920-01-334-7385            | FUSE, MAINTENANCE BYPASS SW  | FNQ-R-1/2                  | 71400     |
| 5920-01-343-0295            | FUSE, MAINTENANCE BYPASS SW  | FNQ-R-2-1/2                | 71400     |
| 5920-01-497-1862            | FUSE, 5A                     | AY282-0-450-000A           | 49956     |
| 5920-01-497-1865            | FUSE, 3A                     | AY282-0-430-000A           | 49956     |
| 5920-01-497-1873            | FUSE, 2A                     | AY282-0-420-000A           | K0268     |
| 5920-01-497-1877            | FUSE, 1A                     | AY282-0-410-000A           | 04995     |
| 5920-01-498-3939            | FUSE, 10A                    | AY282-0-510-000A           | 49956     |
| 5925-01-527-1118            | CIRCUIT BREAKER              | G584029-14                 | 09675     |
| 5925-01-527-1119            | CIRCUIT BREAKER              | G584029-18                 | 09675     |
| 5925-01-527-1188            | CIRCUIT BREAKER              | G584029-2                  | 09675     |
| 5925-01-527-1191            | CIRCUIT BREAKER              | G584029-23                 | 09675     |
| 5925-01-527-1376            | CIRCUIT BREAKER              | G584029-5                  | 09675     |
| 5930-00-020-9332            | SWITCH, THERMOSTATIC         | G533268-1                  | 09675     |
| 5930-01-486-0501            | SWITCH, ELECTRONIC           | LA901-Y-080-000C           | K0268     |
| 5930-01-527-1049            | SWITCH, THERMOSTATIC         | G533268-2                  | 09675     |
| 5930-01-527-1581            | SWITCH ASSY                  | 606-004195-P001            | 1EG52     |
| 5930-01-528-7749            | TEMP SWITCH, +5°C (+41°F)    | 174840-3                   | 35844     |
| 5930-01-528-7751            | TEMP SWITCH, +15°C (+59°F)   | 174840-4                   | 35844     |
| 5930-01-528-7752            | TEMP SWITCH, +185°C (+365°F) | 174969                     | 35844     |
| 5930-01-528-7753            | TEMP SWITCH, ±10°C (+14°F)   | 174840-2                   | 35844     |
| 5930-01-528-7771            | PEDESTAL SAFETY SWITCH       | 174832                     | 35844     |
| 5930-01-528-                | LIMIT/SAFETY SWITCH          | 174844-2                   | 35844     |

| National Stock Number (NSN) | Item Name                | Manufacturer's Part Number | CAGE Code |
|-----------------------------|--------------------------|----------------------------|-----------|
| 7970                        |                          |                            |           |
| 5945-01-174-7950            | RELAY, ELECTROMAGNET     | MY4-DC24                   | 61964     |
| 5945-01-469-9064            | RELAY, MAGNETIC          | MY2K-US-DC24               | 61964     |
| 5945-01-522-5211            | RELAY, ELECTROMAGNET     | G534405-1                  | 09675     |
| 5945-01-527-3827            | RELAY, 9 KW, 24 VDC COIL | DLDC15100A                 | D8855     |
| 5955-01-522-4927            | LOCAL OSCILLATOR         | G533317-1                  | 09675     |
| 5975-01-527-1408            | DVG CHASSIS ASSY         | 100-008421-G001            | 1EG52     |
| 5975-01-527-1413            | CHASSIS, DVG             | 100-008380-P001            | 1EG52     |
| 5975-01-527-3775            | CABLE TIE                | 819-0158-02                | 35844     |
| 5980-01-209-1859            | DIODE, LIGHT EMITTIN     | G582371-1                  | 09675     |
| 5980-01-209-1859            | DIODE, LIGHT EMITTIN     | G582371-1                  | 09675     |
| 5980-01-209-1860            | DIODE, LIGHT EMITTIN     | G582371-2                  | 09675     |
| 5980-01-209-1860            | DIODE, LIGHT EMITTIN     | G582371-2                  | 09675     |
| 5985-01-512-6662            | ROTARY JOINT             | G584005-1                  | 09675     |
| 5985-01-522-5168            | HIGH POWER LOAD          | G440704-1                  | 09675     |
| 5985-01-522-5171            | TERMINATION, WAVEGUI     | G533181-1                  | 09675     |
| 5985-01-522-5175            | DUMMY LOAD, RF           | G533110-1                  | 09675     |
| 5985-01-522-5180            | SWITCH, RF TRANSFER      | G533074-1                  | 09675     |
| 5985-01-522-5186            | CIRCULATOR, RF           | G440702-1                  | 09675     |
| 5985-01-522-5210            | ANTENNA, SITE MON        | ZC0030105000A              | K0268     |
| 5985-01-527-0992            | ATTENUATOR, FIXED        | G172382-1                  | 09675     |
| 5985-01-527-0997            | ATTENUATOR, FIXED        | G172382-2                  | 49956     |

| National Stock Number (NSN) | Item Name                         | Manufacturer's Part Number | CAGE Code |
|-----------------------------|-----------------------------------|----------------------------|-----------|
| 5985-01-527-0998            | SWITCH, WAVEGUIDE                 | G440700-1                  | 09675     |
| 5985-01-527-1007            | COUPLER, DIRECTIONAL              | G440703-1                  | 09675     |
| 5985-01-527-1011            | COUPLER, DIRECTIONAL              | G533008-1                  | 09675     |
| 5985-01-527-1033            | TERMINATION, RF XFER              | G533010-1                  | 09675     |
| 5985-01-527-1096            | SWITCH, RF XFER                   | G581655-1                  | 09675     |
| 5985-01-527-1105            | DIVIDER, RF, 4-WAY                | G583121-1                  | 09675     |
| 5985-01-527-1112            | COMBINER, WAVEGUIDE               | G583247-1                  | 09675     |
| 5985-01-527-3843            | 1:2 DIVIDER                       | G583130-1                  | 09675     |
| 5985-01-528-7969            | REDUCER, CLUTCH, HOUSING ASSEMBLY | 174965                     | 35844     |
| 5985-01-528-7977            | STOW PIN ASSEMBLY                 | 174826                     | 35844     |
| 5985-01-528-7986            | REDUCER BEARING COVER C/W SEALS   | 174920                     | 35844     |
| 5995-01-527-1395            | CABLE ASSY, MODEM, SHORT HAUL     | G710563                    | 49956     |
| 5996-01-512-6170            | AMPLIFIER, LOW DUTY               | 808125/003                 | K0268     |
| 5996-01-522-5191            | AMPLIFIER MODULE, RF              | G584070-4                  | 09675     |
| 5998-01-486-0189            | CIRCUIT CARD ASSEMB               | 808364/002                 | K0268     |
| 5998-01-486-0190            | CIRCUIT CARD ASSY                 | 808365/001/020             | K0268     |
| 5998-01-486-0253            | CCA, SITE SERVICES                | 808366/000/000             | K0268     |
| 5998-01-486-0364            | BACKPLANE ASSY                    | 808412/053                 | K0268     |
| 5998-01-486-0373            | CCA, CONT & MONITOR               | 808459/000                 | K0268     |
| 5998-01-512-6068            | CCA, MODE GENERATOR               | 808163/003/004             | K0268     |
| 5998-01-512-6148            | CCA, CONT & BITE                  | 807893/002/009             | K0268     |
| 5998-01-512-                | CCA, VIDEO & TIMING               | 807894/006/003             | K0268     |



| National Stock Number (NSN) | Item Name               | Manufacturer's Part Number | CAGE Code |
|-----------------------------|-------------------------|----------------------------|-----------|
| 6155                        |                         |                            |           |
| 5998-01-512-6163            | CCA, REPLY DECODER      | 807896/000/010             | K0268     |
| 5998-01-512-6684            | CCA, PEDESTAL INTFC     | G581921-1                  | 09675     |
| 5998-01-522-4932            | CCA, DUAL DSP LOAP      | G504579-1                  | 09675     |
| 5998-01-522-4934            | CCA, PULSE COMPRESSO    | G581978-1                  | 09675     |
| 5998-01-522-4935            | BEAM AND STC/RIS AS     | G584205-1                  | 09675     |
| 5998-01-522-4936            | CCA, ECCM SYNCHRONIZ    | G535661-2                  | 09675     |
| 5998-01-522-4953            | CB PANEL ASSY           | G583102-1                  | 09675     |
| 5998-01-527-1377            | CCA, SDP BACKPLANE      | G584066-1                  | 09675     |
| 5998-01-527-1379            | CCA, I/O INTERFACE      | G584067-1                  | 09675     |
| 5998-01-527-1390            | MODULE, OIL LEVEL SI    | G584416-1                  | 09675     |
| 5998-01-527-1416            | CCA, VME UNIO           | 130-000554-G003            | 1EG52     |
| 5998-01-527-1416            | CCA, VME UNIO           | 130-000554-G003            | 1EG52     |
| 5998-01-527-1423            | CCA, INTERFACE, DSU/CSU | WIC-1DSU-56K4              | 0GX96     |
| 5998-01-527-1425            | CCA, SDT COMMON I/O     | 130-004128-G001            | 1EG52     |
| 5998-01-527-1425            | CCA, SDT COMMON I/O     | 130-004128-G001            | 1EG52     |
| 5998-01-527-1427            | CCA, SDT ARTSII I/O     | 130-004130-G001            | 1EG52     |
| 5998-01-527-1427            | CCA, SDT ARTSII I/O     | 130-004130-G001            | 1EG52     |
| 5998-01-527-1433            | VMEBUS ETHERNET NIC     | 130-008406-P001            | 1EG52     |
| 5998-01-527-1433            | VMEBUS ETHERNET NIC     | 130-008406-P001            | 1EG52     |
| 5998-01-528-0946            | TCMM BACKPLANE          | G533257-1                  | 09675     |
| 6105-01-527-1564            | MOTOR, DRIVE            | 174822                     | 35844     |

| <b>National Stock Number (NSN)</b> | <b>Item Name</b>            | <b>Manufacturer's Part Number</b> | <b>CAGE Code</b> |
|------------------------------------|-----------------------------|-----------------------------------|------------------|
| 6110-01-512-6687                   | CONTROLLER, MOTOR           | G581846-6                         | 09675            |
| 6110-01-527-3478                   | CONTACTOR, AUXILLARY        | 336800202                         | D8855            |
| 6110-01-528-7757                   | BRUSH BLOCK CONTACTOR       | 174870-4                          | 35844            |
| 6110-01-528-7765                   | BRUSH, PEDESTAL CONTACTOR   | 174870-3                          | 35844            |
| 6130-01-486-0360                   | POWER SUPPLY                | 808412/058                        | K0268            |
| 6130-01-486-1042                   | POWER SUPPLY                | 808315/001                        | K0268            |
| 6130-01-512-6039                   | POWER SUPPLY                | G534058-2                         | 09675            |
| 6130-01-512-6043                   | FMAC ASSY                   | G584169-2                         | 09675            |
| 6130-01-512-6651                   | POWER SUPPLY, 70V           | G534061-2                         | 09675            |
| 6130-01-512-6659                   | POWER SUPPLY, 5V            | G534062-2                         | 09675            |
| 6130-01-522-4940                   | POWER SUPPLY, UNINTE        | G580933-3                         | 09675            |
| 6130-01-522-4942                   | POWER SUPPLY                | G440535-1                         | 09675            |
| 6130-01-522-4945                   | POWER SUPPLY                | G440627-1                         | 09675            |
| 6130-01-522-4945                   | POWER SUPPLY                | G533025-1                         | 09675            |
| 6130-01-522-5158                   | POWER SUPPLY                | G533024-2                         | 09675            |
| 6130-01-522-5202                   | POWER SUPPLY, ETHERN        | G584069-8                         | 09675            |
| 6130-01-522-5202                   | POWER SUPPLY, ETHERN        | G584069-10                        | 09675            |
| 6130-01-522-5209                   | POWER SUPPLY                | 808316/001                        | K0268            |
| 6130-01-527-1054                   | BATTERY PACK                | G580933-2                         | 09675            |
| 6130-01-527-1397                   | ADAPTER, POWER SUPPL        | PSA                               | 39941            |
| 6130-01-527-4097                   | POWER SUPPLY                | QP2A1CDV                          | 1EG52            |
| 6135-01-508-                       | BATTERY, PLOT EXTRACTOR PEC | BR2330                            | K0268            |

| National Stock Number (NSN) | Item Name                  | Manufacturer's Part Number | CAGE Code |
|-----------------------------|----------------------------|----------------------------|-----------|
| 3784                        |                            |                            |           |
| 6140-01-343-3092            | BATTERY ASSEMBLY           | 110947                     | 66785     |
| 6150-01-527-4354            | POWER BAR ASSY             | G584480-1                  | 09675     |
| 6210-01-083-4189            | LIGHT, INDICATOR           | 291740                     | 52845     |
| 6210-01-496-4419            | OBSTRUCTION LIGHT BULBS    | G584076                    | 09675     |
| 6210-01-513-5554            | LAMP, AMBER                | BJ310-4-231-250A           | 49956     |
| 6210-01-527-1040            | LED, GREEN                 | G533141-4                  | 09675     |
| 6210-01-527-1046            | LED, AMBER                 | G533141-6                  | 09675     |
| 6210-01-527-3798            | LAMP, GREEN                | BJ310-4-331-250A           | K0268     |
| 6210-01-527-3857            | OBSTRUCTION LIGHT BULBS    | G584076                    | 09675     |
| 6240-01-527-3439            | LAMP, HIGH PRESSURE SODIUM | 11339 70 W<br>LU70/MED     | 0UAH1     |
| 6240-01-527-4088            | LAMP, FLUORESCENT          | PIN 3V477 F40CW            | 25795     |
| 6660-01-512-6251            | MODULE, WIND SPEED         | G534079-3                  | 09675     |
| 6680-01-528-7975            | OIL LEVEL SENSOR           | 174858                     | 35844     |
| 6685-01-458-3106            | INDICATOR, HUMIDITY, PLUG  | 110909-1                   | 66785     |
| 6685-01-484-0939            | THERMOSTAT                 | PA-223676                  | 67271     |
| 6850-00-880-7616            | GREASE, SILICONE           | 1025814                    | 35844     |
| 6850-01-527-1108            | GREASE, SILICONE           | 12225                      | 35844     |
| 6850-01-527-1175            | SPRAY, RUST INHIBITOR      | 78360X                     | 35844     |
| 7010-01-527-1570            | COMPUTER, PENTIUM III      | 190-009045-P001            | 1EG52     |
| 7021-01-522-4931            | CCA, SINGLE BOARD CO       | G534392-2                  | 09675     |
| 7025-01-486-0165            | TERMINAL, DATA PROCE       | 807900/008/009             | K0268     |

| <b>National Stock Number (NSN)</b> | <b>Item Name</b>          | <b>Manufacturer's Part Number</b> | <b>CAGE Code</b> |
|------------------------------------|---------------------------|-----------------------------------|------------------|
| 7025-01-497-9360                   | MONITOR, COLOR            | G584026-1                         | 09675            |
| 7025-01-512-6024                   | MOUSE                     | G584021-12                        | 09675            |
| 7025-01-522-5187                   | INTERFACE UNIT, AUTO      | G534266-1                         | 09675            |
| 7025-01-522-5189                   | PRINTER, DOT MATRIX       | G534790-2                         | 09675            |
| 7025-01-522-5199                   | ETHERNET REPEATER         | G584069-7                         | 09675            |
| 7025-01-522-5199                   | ETHERNET REPEATER         | G584069-9                         | 09675            |
| 7025-01-527-1387                   | LATCHING RELAY BOX        | G584390-1                         | 09675            |
| 7025-01-527-1466                   | ETHERNET HUB              | 170-005034-P001                   | 1EG52            |
| 7025-01-527-1552                   | DISPLAY, VDCU             | 170-005385-P001                   | 1EG52            |
| 7025-01-527-1595                   | INTERFACE UNIT, AUTO      | CISCO1605-R                       | 0GX96            |
| 7025-01-527-3819                   | DSU/CSU, 56 kbps          | DA56                              | 0G546            |
| 7025-01-527-3821                   | DSU/CSU, 9.6 kbps         | DDS/MR1                           | 0G546            |
| 7025-01-527-3840                   | INTERFACE DRIVER ASSEMBLY | G533426-1                         | 09675            |
| 7035-01-522-5208                   | COMPUTER, PROTOCOL        | G584022-1                         | 09675            |
| 7110-01-512-7544                   | COMPUTER, SUN ULTRA       | G584021-1                         | 09675            |
| 8010-01-527-4347                   | PAINT TOUCHUP KIT         | SL26207/00                        | K0268            |
| 8010-01-528-7694                   | PAINT KIT                 | 174499                            | 35844            |
| 8030-01-527-1382                   | SEALANT, POLYSULFIDE      | 174219-1                          | 35844            |
| 8030-01-527-1399                   | COMPOUND, ANTI-SEIZE      | 088938                            | 35844            |
| 8030-01-527-3825                   | LOCTITE, 243              | 36165-34                          | 35844            |
| 8030-01-528-7762                   | SEALANT, BLUE HYLOMAR     | 175155                            | 35844            |
| 8135-01-527-                       | TAPE, TEFLON              | 9905-47                           | 35844            |

| National Stock Number (NSN) | Item Name               | Manufacturer's Part Number | CAGE Code |
|-----------------------------|-------------------------|----------------------------|-----------|
| 1588                        |                         |                            |           |
| 8135-01-527-1589            | TAPE, TEFLON            | 9905-51                    | 35844     |
| 9150-01-149-9166            | OIL, PEDESTAL SUMP      | 175074-2                   | 35844     |
| 9150-01-491-0907            | GREASE                  | AEROSHELL #6               | 056F6     |
| 9150-01-527-1017            | OIL, GEAR REDUCER       | 175074-1                   | 35844     |
| 9150-01-527-1093            | GREASE                  | 1029798                    | 35844     |
| 9150-01-527-1380            | GREASE, CONDUCTIVE      | 203233-2                   | 35844     |
| 9150-01-527-1403            | GREASE, TEXACO          | 175096                     | 35844     |
| 9150-01-527-1566            | GREASE, THERMAL         | 174908                     | 35844     |
| 9150-01-527-3442            | GREASE, MOBILITH        | 174701                     | 35844     |
| 9150-01-527-3797            | LUBE, SWITCH            | BGTUBE                     | 0K977     |
| 9150-01-527-4094            | PLUS 50 OIL, JOHN DEERE | PLUS 50 OIL                | 6G306     |
| 9150-01-527-4120            | GREASE, MOBILITH        | SHC-100                    | 35844     |

**7. STANDARD PROCESSING TIME.** The codes listed in Table 1-1, Priority Table, were established by the FAA to expedite the processing of requisitions, based on the site's required restoration time.

**NOTE:** To insure material is received as required, please contact the FAA Customer Care Center at 405-954-3793 or 1-888-322-9824 if a Priority 1 order is placed after normal duty hours or on weekends.

Table 1-1 Priority Table

| <b>PRIORITY CODE</b> | <b>DEFINITION</b>  | <b>RESPONSE</b>                             |
|----------------------|--|---|
| 1                    | Extreme Emergency. Req'd to restore ops as a result of facility outage or aircraft grounded. | Response/Procurement action within 24 hours |

|   |   |   |
|---|---|---|
| 2 | Emergency. Facility or aircraft is operating with substandard equipment and outage is imminent. No standby equipment available. | Response/Procurement action within 2 days   |
| 5 | Routine. Routine equipment or stock replenishment   | Response/Procurement action within 30 days. |

**8. SOFTWARE, FIRMWARE AND TECHNICAL DOCUMENTATION.**

Questions or comments concerning system software, firmware or DSAR Technical Documentation should be addressed to ATO-W at the Program Support Facility located at the Mike Monroney Aeronautical Center, Oklahoma City, OK, at (405) 954-5181. DASR Operational Site Technical Documentation includes the following manuals:

| <b>Equipment</b>     | <b>Manual Title</b>   | <b>Number</b> |
|----------------------|---|---------------|
| Tower                | Site Technical Manual and Assembly Procedures for the Digital Airport Surveillance Radar (DASR) Tower                             | 6000-004      |
| EE PreFab Shelter    | Equipment Building Technical Manual - Digital Airport Surveillance Radar (DASR)   | None          |
| Load Bank            | AVTRON Model K675A Outdoor Resistive Load Bank Part Number K675D28216, 100KW 480 VAC 5 KW Resolution Load Steps: 5,10,10,25,50 KW | K675AD29216   |
| Auto Transfer Switch | Installation - Automatic Transfer Switches - Models: M340 - Logic: Microprocessor   | TP-5460       |
| Auto Transfer Switch | Operation and Installation Manual - Automatic Transfer Switches - Models: KB-Series - Contractors: 150-4000 Amperes               | TP-5813       |
| Auto Transfer Switch | Control Operation and Setup - Automatic Transfer Switches - Models: M340  | TP-5569       |
| Auto Transfer Switch | Service - Automatic Transfer Switches - Models: M340 - Logic: Microprocessor  | TP-5604       |
| Auto Transfer Switch | Parts Catalog - Microprocessor Logic Automatic and Bypass-Isolation Transfer Switches - Model: M340                               | TP-5503       |
| Auto Transfer Switch | Service Parts - Automatic Transfer Switches - Models: K Series - Contractor Service Parts   | TP-5645       |
| Engine Generator     | Installation Manual - Generator Sets - Models: Industrial   | TP-5700       |
| Engine Generator     | Operation - Industrial Generator Sets - Models: 20-2000KW   | TP-5750       |

| <b>Equipment</b>                         | <b>Manual Title</b>   | <b>Number</b>      |
|--|---|--------------------|
| Engine Generator                         | Wiring Diagrams - Fast-Response II Industrial Generator Sets - Models: 20-180ROZJ, 20-100REOZJ, 40-180ROZJA | TP-5718            |
| Engine Generator                         | Service Parts - Industrial Generator Sets - Models: 135-180ROZJ   | TP-5828            |
| Engine Generator                         | Service Parts - Industrial Generator Sets - Models: Accessories 20-180ROZJ, 20-180ROZP, 200-2000ROZD        | TP-5707            |
| Engine Generator                         | Service - Industrial Generator Sets - Models: 20-300 kW   | TP-5353            |
| Engine Generator                         | Operation and Maintenance Manual - PowerTech 8.1L 6081 OEM Diesel Engines                                   | OMRG24828          |
| Engine Generator                         | Component Technical Manual- PowerTech 8.1L 6081 Diesel Engines  | CTM86              |
| Engine Generator                         | John Deere Engine Service Schedule  | TP-5889            |
| Engine Generator                         | Service Parts - Engine - Engine Model: John Deere 6081 - Generator Set Models: 135-180ROZJ, 125-180ROZJA    | TP-5826            |
| E/G Day Tank                             | Installation Instructions, Day Tank Kits 274602 ... to 354716   | TT-671             |
| E/G Float/Equalizer Battery Charger      | Installation Instructions, Float/Equalize Battery Charger Kits PAA-326766 ... to PAB-325335-SD              | TT-680             |
| E/G Float/Equalizer Battery Charger      | Installation Instructions, Battery Activation (Dry-Charged Batteries)                                       | TT-796             |
| Engine Generator PreFab Housing          | E. G. Building Technical Manual - Digital Airport Surveillance Radar (DASR)                                 | None               |
| Radome                                   |   |                    |
| HVAC Units and controller                | Installation, Operation, and Maintenance Manual for Roof-top AC - Lt. Comm. SZ TC-IOM-4B                    | SV-UN-RT-TC-IOM-4B |
| MRSM PreFab Housing                      |   |                    |
| MRSM PreEng Housing                      |   |                    |
| MRSM Tower and Platform                  |   |                    |
| PreEng Housing                           |   |                    |
| PreEng Housing HVAC Units and Controller |   |                    |
| Engine Generator PreEng Housing          |   |                    |
| Ethernet Hub                             | LMR8TA Mini 10BASE-T Repeater Installation Guide  | 910-189            |

| <b>Equipment</b>           | <b>Manual Title</b>   | <b>Number</b>               |
|----------------------------|---|-----------------------------|
| Ethernet Transceiver       | LTX-FL Ethernet Transceiver Installation Guide  | none                        |
| Ethernet Switch            | LMS8-A Mini Switch Installation Guide   | 900-115A                    |
| Short Range Modem          | SRM-5A, 5D Miniature Short range Modems   | none                        |
| V.35 to EIA-530 cable      | User Manual Model 2014 Interface Powered RS-530 to V.35 Converter   | 070011UC                    |
| DSU/CSU (data access unit) | DA 56 Data Access Unit User's Guide   | 6 456 5248 01 014           |
| Router                     | General - Product Registration Packet   | 83-1190-01                  |
| Router, Model 1602/1605    | Cisco 1600 Series Hardware Installation Guide   | 78-3086-02                  |
| Router, Model 1602/1605    | Cisco WAN Interface cards Hardware Installation Guide   | 78-5046-01                  |
| Router, Model 1602/1605    | Release Notes for the Cisco 1600 Series for Cisco Release 11.2P   | 79-1245-01                  |
| Router, Model 1602/1605    | Regulatory Compliance and Safety Information for Cisco 1600 Series Routers  | 78-3088-03                  |
| Router, Model 1602/1605    | Cisco 1600 Series Software Configuration Guide  | 78-4486-01                  |
| Router, Model 1602         | Quick Start Guide - Installing Your Cisco 1600 Series Router  | 78-5041-01                  |
| Router, Model 1605         | Quick Start Guide - Installing Your Cisco 1605-R  | 78-4234-02                  |
| Fiberoptic Transceiver     | M-EFC Miniature Ethernet Fiber Optic Converter/Transceiver  | none                        |
| FMAC                       | FA-3S Series Programmable Controller User's Manual  | EM 267                      |
| 4-Port Serial I/O          | Multi-port 400S/800S A/Sync Series User's Manual  | 15-00002-00                 |
| Monitor                    | Color Monitor Guide - SUN GDM 17/20 E20   | 3-800-980-22(1)             |
| Keyboard/Mouse             | Keyboard and Mouse Product Notes - SUN Type 5C  | 800-6802-14                 |
| Keyboard                   | Using Your SUN Keyboard   | 800-6654-12                 |
| Floppy Disk                | Diskette Drive Installation and User's Manual   | 801-6397-13                 |
| Printer                    | Printer X-LQ570+/1070+  | 4002064                     |
| UPS                        | Smart-UPS Rack Mount Supplement (Includes 3U Models) User's Manual  | 990-7095                    |
| UPS                        | APC Safety Guide  | 990-7305a                   |
| UPS                        | Smart-UPS XL Supplement   | 990-7022a                   |
| SBC                        | Single Board Computer Installation Guide (Hardware)   | MVME 167IG/D3               |
| Pedestal                   | Digital Airport Surveillance Radar (DASR) ASR-11 Antenna Pedestal System Field Maintenance Manual (With Maintenance Parts List) | None                        |
| MTI/Reflector              | Technical Manual for Moving Target Indicator (MTI) Reflector, S Band PSI Model A-150a   | K:\Manuals\A150a-Manual.Doc |



| <b>Equipment</b>      | <b>Manual Title</b>   | <b>Number</b>                             |
|-----------------------|---|---|
| Adapter Board         | Transition Modules and LCP2 Adapter Board -<br>Motorola MVME 712-12/-13, MVME 712A/AM/B<br>User's Manual  | MVME712A/D2                               |
| Motor Controller      | ACS 601 Frequency Converters 2.2 to 110 KW<br>Installation and Startup Manual   | 3AFY 612001360<br>R0225                   |
| Motor Controller      | ACS 600 AC Drives 3 to 350 HP (2.2 to 315 KW)<br>Programming Manual   | ACS600-US-05<br>3AUA489002B1456<br>RO 101 |
| Workstations          | SPARC Station 5 Installation Guide  | 802-7084-10                               |
| Compressor/Dehydrator | Models 600/850/1200 Series A-D Compressor<br>Dehydrator Installation and Operation Manual   | IB-S 268 Rev. A Part<br>No. 48248         |
| SIU                   | Installation, Operation, and Maintenance Manual for<br>the System Interface Unit of the Airport Surveillance<br>Radar (ASR-11) Data Translator Equipment                | 780-004232                                |
| Rotary Joint          | Rotary Joint RJ 6940/01 Technical Manual  | A1580/00                                  |
| MRSMS                 | Equipment Manual for Dual/Single Channel Site<br>Monitor 808412/000   | EQM 808412/000                            |
| PSR Antenna           | Installation and Maintenance Manual for Model<br>174100 ASR 11 S-Band Antenna   | 79680                                     |
| System                | ASR-11 System Operation and Maintenance Manual  | TI 6310.47 Volume 1                       |
| Interrogator          | Equipment Manual for Condor MSSR Interrogator<br>808136/005   | EQM 808136/005                            |
| LVA Antenna           | Equipment Manual for Condor LVA Antenna<br>807480/00X (2nd Edition)   | EQM 807480/00X                            |
| SDT                   | Installation, Operation and Maintenance Manual for<br>the Surveillance Data Translator (SDT) of the Airport<br>Surveillance Radar (ASR-11) Data Translator<br>Equipment | 780-003729                                |
| MSSR System           | System Manual for MSSR System 808390/000 for the<br>Digital Airport Surveillance Radar (DASR)   | SYM 808390/000                            |
| PSR                   | Equipment Manual, S-Band Airport Surveillance<br>Radar ASR11  | G584380                                   |
| CMC                   | User's Manual for the ASR-11 Radar Data Translator<br>Equipment Control and Maintenance Console   | 780-003727                                |
| DVG and VDCU          | Installation, Operation and Maintenance Manual for<br>the Digital Video Generator (DVG) of the Airport<br>Surveillance Radar (ASR-11) Data Translator<br>Equipment      | 780-003728                                |
| System UPS            | Exide Electronics Powerware Plus International Power<br>Machine (IPM) Balanced Power III 30-160 KVA<br>Uninterruptible Power System Service Manual                      | none                                      |

| <b>Equipment</b> | <b>Manual Title</b>   | <b>Number</b>       |
|------------------|---|---------------------|
| System UPS       | Uninterruptible Power Supply (UPS) Model BPIII 65-4848 (Installation, Operation, and Routine Maintenance) | none                |
| System           | ASR-11 System Field Installation Manual   | TI 6310.47 Volume 2 |

**9. FUTURE SUPPORT.**

a. The Contractor’s Depot support is planned to transition to the FAA Logistics Center by September 30, 2006. Prior to transferring the depot activities to the FAA Logistics Center, the following activities will be successfully completed:

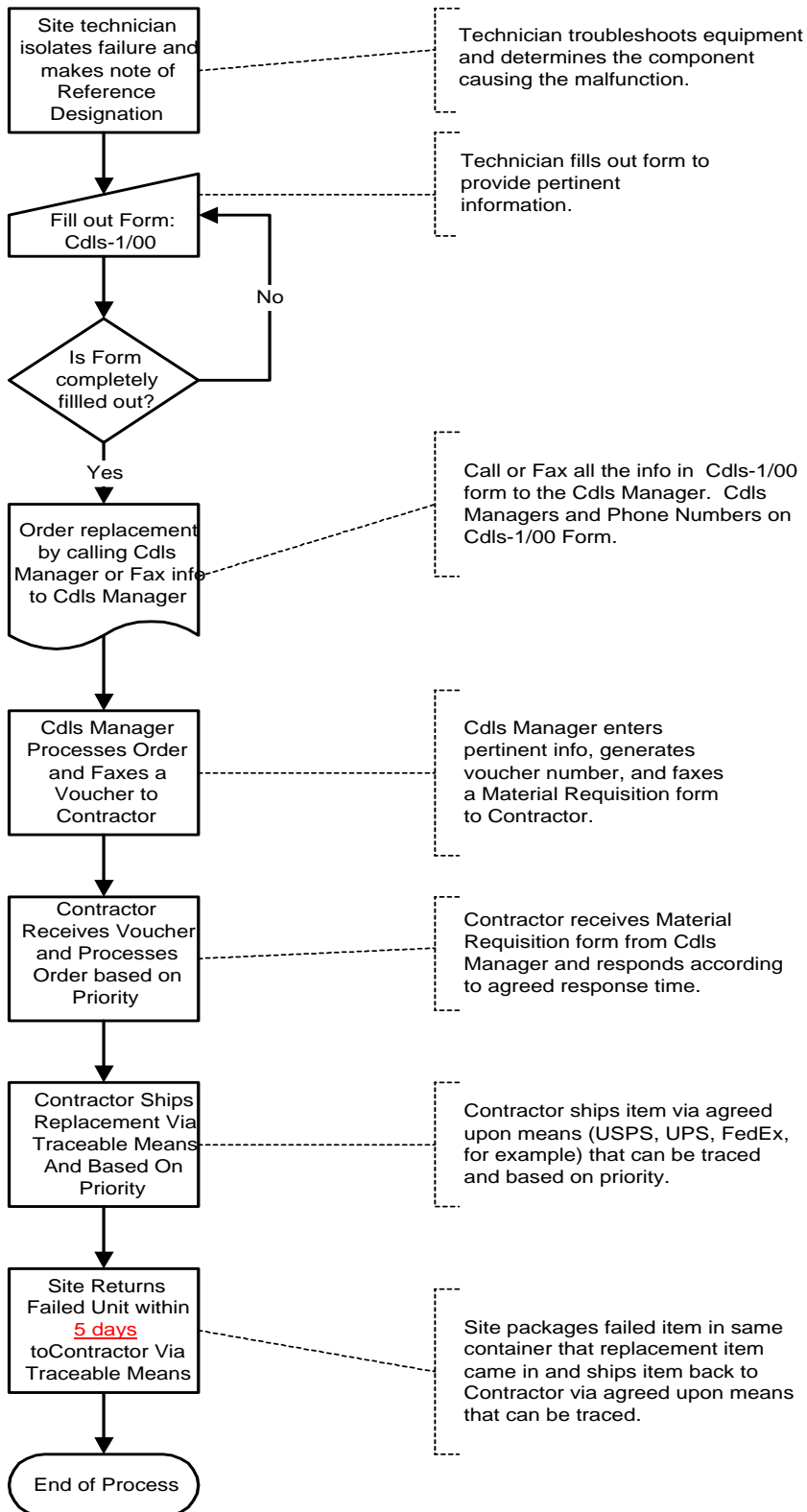
1. System baseline identification
2. Configuration and asset tracking tool selection
3. Completion of provisioning activities, LRU identification, etc.
4. Technician training
5. LRU cataloguing
6. Approved Transition Plan

b. These activities provide the foundation for depot support procedures and have to be completed before full FAA depot logistics procedures can be defined.

# APPENDIX 1

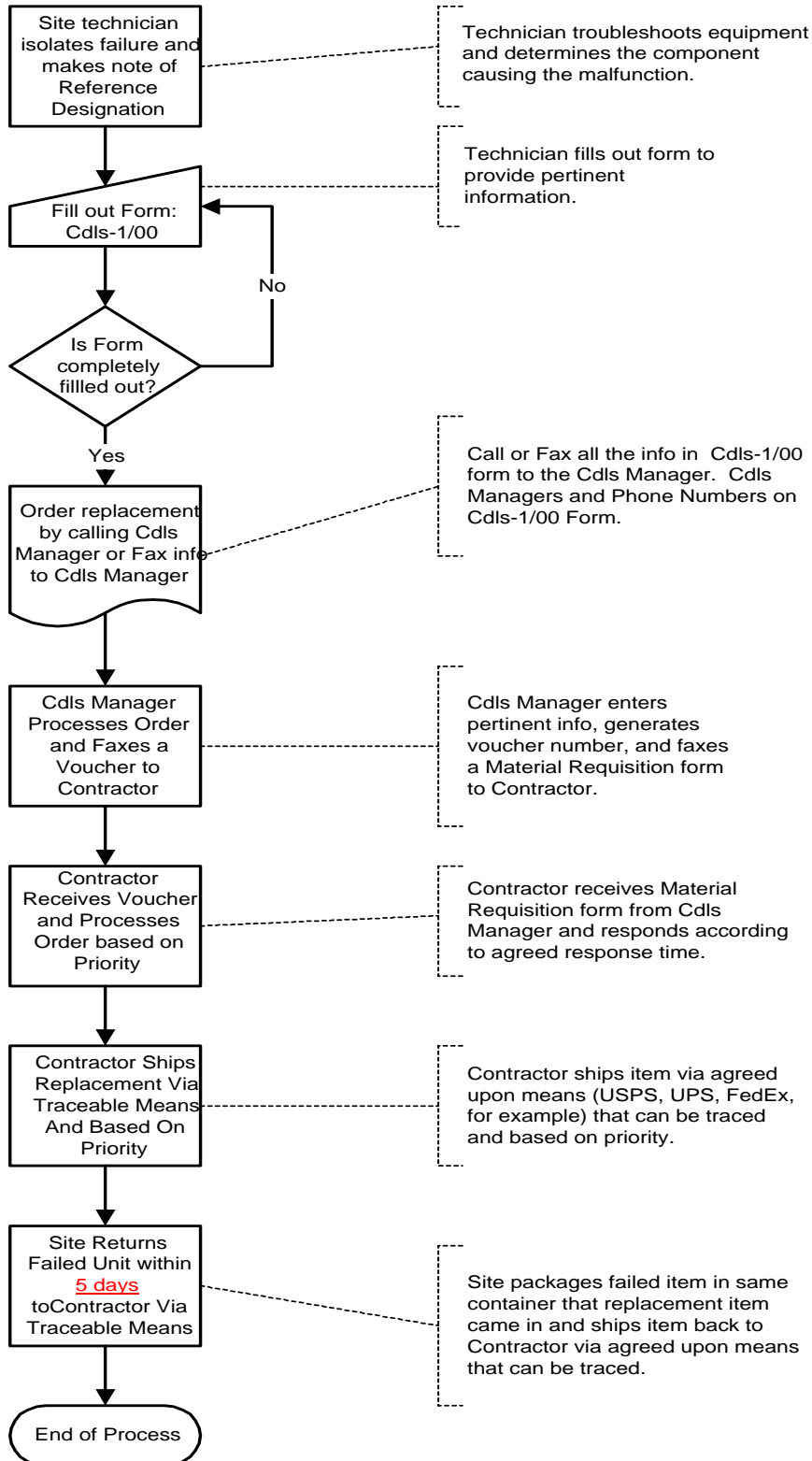
## FAA ORDERING PROCESS FOR

### ASR-11



APPENDIX 2

**DOD ORDERING PROCESS FOR**  
**ASR-11**



APPENDIX 3

| <b>MATERIAL REQUISITION</b>  |  |                                       |               |
|--|--|---------------------------------------|---------------|
| Department Of Defense Activity Address Code (DODAAC)/Supply Support Code(SSC): |  |                                       |               |
| Part Number:   | Item Description:  | Quantity                              | Unit of Issue |
| National Stock Number<br>(If known)  | Reference Designation of<br>Failed Component:  | Serial Number of Failed<br>Component: |               |
| Valid Ship To Address:   |  |                                       |               |
| Priority:  | Reason for Priority:   | Preferred Shipper:                    |               |
| <u>Priority</u>  | <u>Definition</u>  | <u>Reason</u>                         |               |
| 1  | Extreme emergency situation. Required to restore operations as result of facility or equipment outage. | Out of service                        |               |
| 2  | Emergency. Facility or equipment is operating with substandard component and outage is imminent.       | Imminent Failure or No standby        |               |
| 5  | Routine requirement or stock replenishment   | Replenish stock                       |               |
| Point of Contact (POC):  | Phone Number of POC:   | Fax Number of POC                     | Date Ordered  |

Remarks or special instructions:

Call in the above information as follows:

1600 - 0700 Mon thru Fri, weekends & holidays (0000 – 2400) (877) 745-2401

0700 – 1600 Mon thru Fri – (405) 605-4067

Form ICS-1/00 – Revised 4/17/00