



U.S. Department
of Homeland Security
**United States
Coast Guard**

**LOCAL NOTICE TO MARINERS
WEEKLY EDITION**

District: 7

Week: 36/06

Issued by:
Commander, Seventh Coast Guard District
909 SE 1st Avenue, Miami, Florida 33131-3050
Telephone (305) 415-6730 or (305) 415-6751
Fax (305) 415-6757
Office hours 7:30 a.m. - 4:00 p.m., M-F

BROADCAST NOTICE TO MARINERS

Navigation information having been of immediate concern to the Mariner, and promulgated by the following broadcasts, has been incorporated in this notice when still effective:

- CCGD7 (D7) BNM 816 to 854-06
- SECTOR CHARLESTON (CHA) BNM 242-06 to 337-06
- SECTOR JACKSONVILLE (MAY) BNM 270-06 to 275-06
- SECTOR MIAMI (MIA) BNM 387-06 to 395-06
- SECTOR KEY WEST (KEY) BNM 140-06 to 157-06
- SECTOR ST.PETERSBURG (STP) BNM 1068-06 to 1110-06
- SECTOR SAN JUAN (GAN) BNM 171-06 to 190-06

NOTES: (1) Unless otherwise indicated, missing and destroyed structures are presumed to be in the immediate vicinity, mariners should proceed with caution.

(2) The Local Notice to Mariners consists of a Weekly Edition.

(3) Inquiries, Published Articles or Information: (e-mail) Bernard.A.Dukes@uscg.mil or D7LNM@uscg.mil

REFERENCES: Light List, Vol. III, Atlantic and Gulf Coasts, 2005 Edition (COMDTPUB P16502.3).

U.S. Coast Pilot 4, Atlantic Coast: Cape Henry to Key West, 2005 (37th Edition).

U.S. Coast Pilot 5, Atlantic Coast: Gulf of Mexico, Puerto Rico and Virgin Islands 2006 (34rd) Edition.

The Local Notice to Mariners is available online at:

<http://www.navcen.uscg.gov/lnm/d7>

The United States Coast Guard Navigation Information Service (NIS)

The United States Coast Guard Navigation Information Service (NIS), operated by the USCG Navigation Center, is staffed 24 hours a day, 7 days a week. The NIS provides information on the current operational status, effective policies, and general information for GPS, DGPS, and LORAN-C. The NIS also disseminates Safety Broadcasts (BNM), Local Notice to Mariners (LNM), and the latest Notice Advisory to Navstar Users (NANU). NANU notices can be obtained via email subscription through the USCG Navigation Center website: <http://www.navcen.uscg.gov/gps/status/default.htm>.

In addition, the NIS investigates all reports of degradation or loss of GPS, DGPS or LORAN service. Mariners are encouraged to report all degradation or loss of radio navigation services to the NIS via any of the following: Phone: (703) 313-5900, Email: webmaster@smtp.navcen.uscg.mil, or on the World Wide Web at: <http://www.navcen.uscg.gov>

REPORT DISCREPANCIES IN AIDS TO NAVIGATION TO THE NEAREST COAST GUARD UNIT

SAFE BOATING AND SEAMANSHIP PROGRAMS: (See Enclosure Section)

ABBREVIATIONS

A through I

ACOE - Army Corps of Engineers
ADRIFT - Buoy Adrift
AICW - Atlantic Intracoastal Waterway
B - Buoy
BKW - Breakwater
B - Refer to Light List
BNM - Broadcast Notice to Mariner
CG - Refer to Light List
CHAN - Channel
CGD - Coast Guard District
CR - Refer to Light List
C/O - Cut Off
CONT - Contour
CONSTR - Construction
CRK - Creek
CONST - Construction
DBN - Daybeacon
DBD/DAYBD - Dayboard
DBN/DEST - Daybeacon Destroyed
DBN IMCH - Daybeacon Improper
Characteristic
DISCON - Discontinued
DMGD - Daybeacon Damaged
EST - Established Aid
EVAL - Evaluation
EXT - Extinguished
FL - Flashing
FS - Fog Signal
HAZ - Hazard to Navigation
HBR - Harbor
HOR - Horizontal Clearance
HT - Height
ICW - Intracoastal Waterway
IMCH - Improper Characteristic
INL - Inlet
INOP - Not Operating
ISL - Islet
-

K through M

KBG - Refer to Light List
KBG-I - Refer to Light List
KBR - Refer to Light List
KBR-I - Refer to Light List
KBW - Refer to Light List
KGB - Refer to Light List
KGB-I - Refer to Light List
KGR - Refer to Light List
KGR-I - Refer to Light List
KGW - Refer to Light List
KGW-I - Refer to Light List
KRB - Refer to Light List
KRB-I - Refer to Light List
KRG - Refer to Light List
KRG-I - Refer to Light List
KRW - Refer to Light List
KWB - Refer to Light List
KWB-I - Refer to Light List
KWG - Refer to Light List
KWG-I - Refer to Light List
KWR - Refer to Light List
KWR-I - Refer to Light List
LAT - Latitude
LB - Lighted Buoy
LBB - Lighted Bell Buoy
LHB - Lighted Horn Buoy
LGB - Lighted Gong Buoy
LONG - Longitude
LNM - Local Notice to Mariners
LT - Light
LT CONT - Light Continuous
LWB - Lighted Whistle Buoy
LWP - Left Watching Properly
MISS - Missing
MR - Refer to Light List
MR-I - Refer to Light List

N through Z

NB - Refer to Light List
N/C - Not Charted
ND - Refer to Light List
NG - Refer to Light List
NGA - National Geospatial-Intelligence Agency
NL - Refer to Light List
NO - Number
NOS - National Ocean Service
NR - Refer to Light List
NW - Refer to Light List
NW - Notice Writer
NY - Refer to Light List
OBSCU - Obscured
OBST - Obstruction
OBSTR - Obstruction
PRIV - Private Aid
RBN - Radio Beacon
REBUILT - Aid Rebuilt
RECOVERED - Aid Recovered
RED - Red Buoy
REDINT - Reduced Intensity
RRL - Range Rear Light
RELIGHTED - Aid Relighted
RELOC - Relocated
RESET ON STATION - Aid Reset on Station
RFL - Range Front Light
RIV - River
SEC - Section
SG - Green Square
SG-SY - Green Square with Yellow Square
SHL - Shoaling
SND - Sound
TEMP - Temporary Aid Change
St M - Statute Mile
TR - Red Triangle
TRLB - Temporarily Replaced by Lighted Buoy
TRLT - Temporarily Replaced by Light
TR-TY - Red Triangle with Yellow Triangle
TRUB - Temporarily Replaced by Unlighted Buoy

Additional Abbreviations Specific to this LNM Edition: None

SECTION I - SPECIAL NOTICES

This section contains information of special concern to the Mariner.

DGPS ISABELA, PUERTO RICO OFF AIR TIMES

Isabela, Puerto Rico will be off air September 27, 2006 from 1300Z to 1500Z (0900-1100 EDT) for NAVTEX Preventive Maintenance. Alternate date is September 28, 2006 from 1300Z to 1500Z (0900-1100EDT). Users shall address inquiries to the DGPS Eastern Operations Control Officer CWO Thor Banks at (703) 313-5811.

LNM: 35/06

CHANGES TO ATLANTIC OCEAN, GULF OF MEXICO, AND PUERTO RICO NAVTEX BROADCAST SCHEDULE

Effective October 1, 2006, the U.S. Coast Guard, in coordination with the National Weather Service (NWS), will begin broadcasting weather via NAVTEX four times per day, rather than six. Repeat of Notices to Mariners will be broadcast twice a day in time slots where the weather is excluded. See new broadcast schedule below.

STATION	IDENTIFIER	WX BROADCAST SCHEDULE (UTC)
Boston	F	0045, 0445, 0845(1), 1245, 1645, 2045(1)
Portsmouth	N	0130, 0530, 0930(1), 1330, 1730, 2130(1)
Savannah	E	0040, 0440, 0840(1), 1240, 1640, 2040(1)
Miami	A	0000, 0400, 0800(1), 1200, 1600, 2000(1)
San Juan	R	0200(1), 0600, 1000, 1400(1), 1800, 2200
New Orleans	G	0330(1), 0700, 1100, 1500(1), 1900, 2300

(1) Routine weather forecasts are broadcast four times per day with these being the normal times when repeats of Notice to mariners are broadcast in lieu of weather. Weather warning may be broadcast at any time.

LNM: 33/06

DATES OF LATEST EDITIONS, NAUTICALS CHARTS AND MISCELLANEOUS MAPS

The Dates of Latest Editions, Nautical Charts and Miscellaneous Maps, dated July 1, 2006, published by the National Ocean Service, is available for issue. It may be obtained free by mail from the FAA/National Aeronautical Charting Office, Distribution Division AVN-530, 10201, Good Luck Road, Glenn Dale, MD, 20769-9700, by telephone at 1-800-638-8972 or from your local authorized nautical chart sales agent. This is a quarterly publication listing the most recent editions of nautical charts, miscellaneous maps and publications relating to navigation, weather, etc. with brief descriptions and up-to-date prices for most of the publications listed. Much of this information may also be obtained online at: <http://chartmaker.ncd.noaa.gov/mcd/dole.htm>

LNM: 16/06

Hurricane Season

The hurricane season extends from June through November. Hurricanes can cause excessive damage to vessels and loss of life. To minimize these dangers, the following precautions should be taken by all mariners before getting underway during the hurricane season:

- (a) Instruction of crew and passengers in location of emergency equipment and emergency procedures;
- (b) Pre-sailing check of vessel, machinery, and equipment for seaworthiness;
- (c) Installation of strong ground tackle;
- (d) Review of storm center evasion procedures;
- (e) Knowledge of nearest hurricane shelter or port; and
- (f) Constant radio watches on channel 16 VHF-FM and frequent monitoring of weather broadcasts.

HURRICANE INFORMATION

The civilian hurricane warning service for the North Atlantic is provided by the National Hurricane Center, Miami, Florida. The center collates ship, aircraft, radar, and satellite data to produce and issue tropical cyclone warnings and forecasts for the North Atlantic Ocean, including the Caribbean Sea and the Gulf of Mexico. A Tropical Cyclone Advisory message is issued every six hours, with intermediate bulletins provided as needed.

For tropical storms and hurricanes threatening to cross the coast of the U.S., coastal warnings are issued to the public so that precautionary actions, including evacuation, can be initiated to minimize damage and loss of life. Two levels of warnings are employed:

- (a) HURRICANE WATCH - a preliminary alert that a hurricane MAY threaten a specified portion of the coast. It is issued 36 hours before landfall may occur; and

Hurricane Season

(b) HURRICANE WARNING - which indicate that hurricane conditions are EXPECTED along a specified portion of the coast. It is issued 24 hours before landfall. To provide additional information for maritime interests, a Marine Advisory is also issued which provides storm position forecasts for up to 72 hours in advance of a storm, and probabilities of hurricane strikes for coastal locations and offshore coordinates.

Mariners are reminded that aids to navigation, particularly lighted and unlighted buoys, may be moved from charted position, damaged, destroyed, extinguished or otherwise deemed discrepant as a result of hurricane and storms. Mariners should not rely solely upon the position or operation of an aid to navigation, but also employ such other methods of determining position as may be available.

Mariners are further reminded that during the hurricane season drawbridges along the coast may deviate from normal operating procedures. Drawbridges are authorized to remain closed upon approach of gale force winds of 34 knots or greater. Others may be authorized to extend closed periods prior to gale force winds to facilitate evacuation of land traffic or close operations up to 8 hours before expected arrival of gale force winds. Due to the uncertainty of hurricane movements and bridge closures, mariners are urged to seek passage through drawbridges well in advance of the arrival of gale force winds.

LNM: 22/06

FEDERAL REGISTER: MARCH 8, 2006 (VOLUME 71, NUMBER 45), RULES AND REGULATIONS: REGULATED NAVIGATION AREA; SAN CARLOS BAY, FLORIDA

SUMMARY: The Coast Guard is establishing a temporary regulated navigation area on the waters of San Carlos Bay, Florida. The regulated navigation area is needed to minimize the risk of potential bridge allisions by vessels utilizing the main channel under span -A- (bascule portion) of the Sanibel Island Causeway Bridge and enhance the safety of vessels transiting the area and vehicles crossing over the bridge.

DATES: This rule is effective from 8:00 a.m. on January 8, 2006 until 8:00 a.m. on January 7, 2007.

FOR FURTHER INFORMATION CONTACT: Lieutenant Junior Grade Jennifer Andrew at Coast Guard Sector St. Petersburg, Prevention Department, (813) 228-2191, Ext. 8203.

For Complete Text See Local Notice to Mariner (LNM 11/06) Dated 14 March 2006

Chart 11427

LNM: 11/06

SPECIAL WARNING NUMBER 123, SOMALI.

Due to continuing conditions of armed conflict and lawlessness in Somalia and waters off its coast. Mariners are advised to avoid the Port of Mogadishu and to remain at least 200 nautical miles distant from the Somali Coast.

For Complete Text of Message see Enclosure (2).

LNM: 47/05

U.S. COAST PILOT 4, ATLANTIC COAST: CAPE HENRY, VA TO KEY WEST, FL

PUBLICATION - National Ocean Service - U.S. Coast Pilot 4, Atlantic Coast: Cape Henry, VA to Key West, FL, (37th) Edition, is ready for issue and may be obtained from:

Federal Aviation Administration
National Aeronautical Charting Office
Distribution Division, AVN - 530
6303 Ivy Lane, Suite 400
Greenbelt, MD 20770-1479

and authorized agents of the National Ocean Service. Price \$26.00. The 2005 Edition cancels the preceding 2004 Edition. All corrections to the previous edition issued in Notices to Mariners are incorporated in this edition.

Mariners are encouraged to use the convenient -RECORD Of CHANGES- form on Page VI of this book. All Coast Pilot changes published in the U.S. Coast Guard Local Notice to Mariners, National Geospatial-Intelligence Agency Notice to mariners, and on the Internet at: <http://nauticalcharts.noaa.gov/nsd/cpdownload.htm>. are serially numbered (i.e., Changes No. 1, Changes No. 2. etc.) to assist you in tracking the changes.

U.S. COAST PILOT 5, ATLANTIC COAST: GULF OF MEXICO, PUERTO RICO AND VIRGIN ISLAND

PUBLICATION-National Ocean Service-U.S. Coast Pilot 5, Gulf of Mexico, Puerto Rico, and Virgin Islands, 2006, 34th Edition, is ready for issue and may be obtained from

Federal Aviation Administration
National Aeronautical Charting Office
Distribution Division, AVN-530
10201 Good Luck Road
Glenn Dale, MD 20769-9700

and authorized agents of the National Ocean Service. Price \$26.00.

The 2006 Edition cancels the preceding 2005 Edition.

All corrections to the previous edition issued in Notices to Mariners are incorporated in this edition.

Mariners are encouraged to use the convenient -RECORD OF CHANGES- form on Page V of this book. All Coast Pilot changes published in the U.S. Coast Guard Local Notice to Mariners, National Geospatial-Intelligence Agency Notice to Mariners, and on the internet at <http://nauticalcharts.noaa.gov/nsd/cpdownload.htm> are serially numbered (i.e., Change No. 1, Change No. 2, etc.) to assist you in tracking the changes.

(NOS/06)

LNM: 24/06

OPERATION "ON GUARD"

U. S. Coast Guard Marine Safety Office Miami announces Operation "ON GUARD". This operation is designed to employ Coast Guard - active duty, reserve and auxiliary, Federal Bureau of Investigation, US Customs Service, US Immigration and Naturalization Service and the Florida Department of Law Enforcement personnel in response to suspected terrorist activity at the waterfront facilities of the United States.

For Complete Text of Message See Enclosure (2).

INTERNET DELIVERY OF U.S. NOTICE TO MARINERS

The National Geospatial-Intelligence Agency (NGA) has changed the way the U.S. Notice to Mariners are made available to the maritime community. NGA will continue to provide U.S. Notice to Mariners to the public but only in the digital version exclusively via the Internet.

RADIOTELEPHONE SERVICE ON FREQUENCY 2180.0 KHZ

The U.S. Coast Guard international distress and calling radiotelephone service on the frequency 2180.0 may be operating at reduced power and sensitivity due to shore side radio infrastructure problems. Action is underway to correct these problems.

The Coast Guard is operating a medium frequency Digital Selective Calling distress and safety service on a trial operating basis only. A Global Maritime Distress and Safety System (GMDSS) Sea Area A2 will not be declared in U.S. waters until shore side radio infrastructure problems can be corrected.

COAST GUARD SECURITY ZONE

The Captain of the Port of Charleston, SC, has established a temporary security zone for the waters under the Don Holte I-526 Bridges over the Cooper River to Lighted Buoy 73 (LLNR 3050) until further notice. In the interest of national security, all vessels are prohibited from entering, transiting, anchoring, mooring or loitering within this zone, unless specifically authorized by the Captain of the Port.

Mariners should contact the lead Coast Guard vessel on VHF Channel 16 for safety and maneuvering information when operating in the vicinity of this zone.

NAVAL PROTECTION ZONES

The U. S. Coast Guard has established protection zones around U. S. Naval vessels within U. S. navigable waters. Naval vessels protection zones are established within 100 yards of any U. S. Naval vessel. This includes any vessel owned, operated, chartered, or leased by the U. S. Navy or under the operational control of the U. S. Navy.

NAVAL PROTECTION ZONES

Vessels within 500 yards of a U.S. Naval vessel shall operating at the minimum speed necessary to maintain a safe course and proceed as directed by the official patrol. Mariners may contact the U.S. Coast Guard on VHF Channel 16 regarding this message.

SECTION II - DISCREPANCIES

This section lists all reported and corrected discrepancies related to Aids to Navigation in this edition. A discrepancy is a change in the status of an aid to navigation that differs from what is published or charted.

DISCREPANCIES (FEDERAL AIDS)

LLNR	Aid Name	Status	Chart No.	BNM Ref.	LNM St	LNM End
660	Bethel Shoal Lighted Buoy 10	MISSING	11476	385-06 MIA	31/06	
805	Port Everglades Spoil Bank East Daybeacon	TRUB	11470	506-05 MIA	47/05	
810	Port Everglades Spoil Bank West Daybeacon	TRUB	11470	411-05 MIA	32/05	
950	Elbow Reef Light 6	TRLB	11451	301-05 KWT	39/05	
970	Davis Reef Light 14	TRUB	11464	106-06 KWT	39/05	
980	Alligator Reef Light	RBN INOP	11449	1035-05 KWT	29/05	
1005	Big Pine Shoal Light 22	TRLB	11446	567-05 KWT	40/05	
1010	Looe Key Light 24	TRLB	11442	336-05 KWT	39/05	
1080	Twenty-Eight Foot Shoal Light	TRLB	11439	394-05 KWT	40/05	
1085	Halfmoon Shoal Light WR2	TRLB	11439	112-06 KWT	30/05	
1090	Rebecca Shoal Light	TRLT/DBN DMGD/DBD DEST	11439	113-06 KWT	42/05	
1120	Fort Jefferson Lighted Buoy E	MISSING	11438		30/06	
1190	New Ground Rocks Light	DBD DEST	11439	373-05 KWT	42/05	
1230	Cape Romano Shoals Light	TRLB	11430	058-06 STP	47/05	
1590	Homosassa Bay Entrance Light 2	DBD DEST	11409	1084-06 STP	32/06	
1620	Cedar Keys Main Channel Light 1	TRLB	11408	0337-06 STP	12/05	
1625	Cedar Keys Northwest Channel Approach Light 2	TRLB	11408	0673-06 STP	19/06	
1645	Horseshoe Beach Approach Light 2	TRLB/LT EXT/DBN DEST	11407	0859-06 STP	25/06	
1720	Little River Inlet Daybeacon 10	TRUB	11534	398-05 CHA	50/05	
1730	Little River Inlet Daybeacon 12	TRUB	11534	231-06 CHA	30/06	
2085	Winyah Bay Channel Lighted Buoy 26	BUOY DMGD	11532	NA	30/06	
2205	Great Pee Dee River Daybeacon 4	TRUB	11532	147-06 CHA	20/06	
2465	Charleston Harbor Channel Lighted Buoy 23	OFF STA	11523	240-06 CHA	31/06	
2470	Charleston Harbor Channel Lighted Buoy 24	OFF STA	11523	251-06 CHA	33/06	
2635	Charleston Harbor South Channel Lighted Buoy 2	OFF STA	11523	264-06 CHA	35/06	
2650	Battery Point Lighted Buoy BP	TRLT	11524	269-06 CHA	35/06	
3290	Wando River Range A Front Light	LT EXT	11524	276-06 CHA	36/06	
3310	Wando River Terminal Lighted Buoy 4	LT IMCH	11524	277-06 CHA	36/06	
3470	Wando River Range E Rear Daybeacon	DBN DMGD	11524	167-06 CHA	22/06	
3530	Mount Pleasant Channel Daybeacon 6	TRUB	11523	422-05 CHA	52/05	
3815	Stono River Daybeacon 12A	TRUB	11522	255-05 CHA	34/05	
3865	North Edisto River Entrance Lighted Buoy 6	MISSING	11522	272-06 CHA	50/05	
3885	North Edisto River Inner Lighted Buoy 9	LT EXT	11522	273-06 CHA	36/06	
4470	Broad Creek Daybeacon 7	TRUB	11516	194-06 CHA	26/06	
4775	New Channel Range Rear Light	DBD DMGD	11507	043-06 CHA	07/06	
5065	Kings Island Turning Basin Light 16	LT EXT/DBN DEST	11514	NA	35/06	
5795	St Catherines Sound Lighted Buoy 2	LT EXT	11511	279-06 CHA	36/06	

5835	Sapelo Sound Buoy S	TMK MISSING	11510	162-06 CHA	20/06
6350	Blythe Island Range Front Light	LT EXT	11506		30/06
6525	St Marys Entrance Range Front Light	LT IMCH	11503	154-06 JAX	17/06
6530	St Marys Entrance Range Rear Light	REDUCED INT	11503	245-06 JAX	24/06
7120	St Johns Bar Cut Range Rear Light	LT EXT	11491	291-06 JAX	25/06
7185	Mayport Basin Channel Lighted Buoy 4	LT EXT	11489	300-06 JAX	36/06
7360	Fulton Cutoff Light 36	TRLB	11491	275-06 JAX	24/06
8360	Horse Landing Light 37	LT IMCH	11495	222-06 JAX	26/06
8540	Georgetown Light 70	LT EXT	11495	212-06 JAX	24/06
8545	Georgetown Light 72	LT EXT	11495	295-06 JAX	35/06
9210	Butchers Bend Cutoff Daybeacon 111	TRUB	11498	293-06 JAX	35/06
9575	Canaveral Harbor Approach Channel Range Front Light	LT EXT	11478	271-06 JAX	32/06
9615	Canaveral Harbor Approach Channel Lighted Buoy 9	OFF STA	11478	248-06 JAX	27/06
10145	St Lucie Inlet Light 9	MISSING	11472	421-06 MIA	36/06
10155	St Lucie Inlet Daybeacon 12	TRUB	11472	0245-05 MIA	20/05
10330	Port Everglades Light 4	TRLB	11470	129-06 MIA	05/06
10470	Miami Main Channel Lighted Buoy 1	LT EXT	11468	426-06 MIA	36/06
10530	Miami Main Channel Lighted Buoy 11	LT EXT	11468	419-06 MIA	36/06
12655	Big Spanish Channel Daybeacon 52	TRLB	11448	150-06 KWT	32/06
13610	East Turtle Shoal Light 45	TRUB	11449	566-05 KWT	41/05
15365	Calda Channel Daybeacon 11	TRUB	11441	403-05 KWT	45/05
15440	Dry Tortugas Southeast Channel Light 1	LT EXT/DBN DEST	11438	166-04 KWT	34/04
15450	Dry Tortugas Southeast Channel Light 3	TRLB	11438	285-05 KWT	41/05
15455	Dry Tortugas Southeast Channel Daybeacon 4	TRUB	11438	107-06 KWT	37/05
15505	Dry Tortugas Southwest Channel Daybeacon 3	TRLB	11438	517-05 KWT	45/05
15635	Sandy Key Channel Daybeacon 10X	TRUB	11451	571-05 KWT	45/05
15700	Flamingo Channel Daybeacon 13	TRDBN	11433	NA	49/05
15705	Flamingo Channel Daybeacon 14	TRUB	11433	267-04 MIA	24/04
15835	Whitewater Bay Daybeacon 36	DBD DMGD	11433	206-06 MIA	16/06
16970	Capri Pass Light 6	TRLB	11430	1131-06 STP	34/06
16985	Capri Pass Light 9	TRLB	11430	0650-06 STP	10/06
16990	Capri Pass Daybeacon 11	TRLB	11430	0649-06 STP	21/06
17165	Big Marco Pass-Gordon Pass Daybeacon 3	TRUB	11430	1039-06 STP	27/06
17290	Big Marco Pass-Gordon Pass Daybeacon 30A	TRUB	11430	0712-05 STP	38/05
17420	Big Marco Pass-Gordon Pass Daybeacon 66	TRUB	11430	NA	26/06
17420.5	Big Marco Pass-Gordon Pass Daybeacon 67	TRUB	11430	1052-06 STP	31/06
17550	Naples Bay Channel Daybeacon 22	TRUB	11430	1004-06 STP	28/06
17595	Naples Bay Channel Daybeacon 25	TRUB	11430	1038-06	29/06
20480	Peace River Daybeacon 3	TRUB	11426	0127-06 STP	02/06
21190	Peace River Daybeacon 24	TRUB	11426	1221-04 STP	34/04
22045	Manatee River Daybeacon 20	TRLB	11425	1117-06 STP	34/06
22070	Manatee River Daybeacon 24	TRLB	11416	0517-06 STP	17/06
22075	Manatee River Buoy 23	TRUB	11416	167-06 STP	06/06
22275	Egmont Channel Lighted Buoy 10	LT EXT	11412	1155-06 STP	36/06
22355	Mullet Key Channel Range Front Light	DBD DMGD	11415	0899-06 STP	27/06
23595	Port Sutton Channel Light 3	TRLB	11415	1121-06 STP	34/06
23785	Tampa Bay Cut K Channel Upper Range Rear Light	HAZ NAV/LT EXT	11416	0896-06 STP	31/05
23970	South Gandy Channel Daybeacon 3	TRUB	11415	0683-06 STP	16/06
25460	Pass-A-Grille Channel Daybeacon 1	TRUB	11411	1003-06 STP	28/06
25580	Johns Pass Channel Daybeacon 1	TRUB	11411	1006-06 STP	28/06

25585.5	Johns Pass Channel Buoy 3	TRUB	11411	1002-06 STP	24/06
25620	Johns Pass Channel Light 7	TRLB	11411	1057-06 STP	30/06
25685	Clearwater Pass Channel Daybeacon 3	TRUB	11411	1138-06 STP	35/06
26560.5	Pithachascotee River Daybeacon 10A	TRUB	11411	0596-06 STP	18/06
28365	Homosassa Bay Entrance Light 2	DBD DEST	11409	1084-06 STP	32/06
28635	Homosassa River Daybeacon 69A	TRUB	11409	0331-06 STP	10/06
29240	Cross Florida Barge Canal Light 22	TRUB	11408	1072-06 STP	32/06
29755	Cedar Keys Main Channel Light 1	TRLB	11408	0337-06 STP	12/05
29920	Cedar Keys Northwest Channel Approach Light 2	TRLB	11408	0673-06 STP	19/06
30360	Horseshoe Beach Approach Light 2	TRLB/LT EXT/DBN DEST	11407	0859-06 STP	25/06
30370	Horseshoe Beach Approach Daybeacon 5	TRLB	11407	0857-06 STP	25/06
31130	Boca de Cangrejos Lighted Buoy BC	TRLB/BUOY DMGD/REDUCED INT	25668	095-06 SJN	12/06
33345	Southwest Cape Shoal Buoy 2	TRUB	25644	073-06 SJN	13/06
33410	St Nicolas Point Channel Light 6	TRUB	26230	067-05 GAN	11/05
33535	Mud Island Light 1	TRUB	26230	068-05 GAN	11/05
33647	Little River-Winyah Bay Obstruction Daybeacon B	TRUB	11534	103-06 CHA	15/06
33820	Little River-Winyah Bay Daybeacon 31	TRUB	11534	147-06 CHA	20/06
33825	Little River-Winyah Bay Light 32	TRUB	11534	229-06 CHA	20/06
33875	Little River-Winyah Bay Light 47	TRLB	11534	171-06 CHA	23/06
34180	Winyah Bay-Charleston Harbor Daybeacon 19	TRUB	11532	180-06 CHA	17/06
34325	Winyah Bay-Charleston Harbor Daybeacon 64	TRLB	11518	139-06 CHA	18/06
34375	Winyah Bay-Charleston Harbor Daybeacon 78	TRUB	11518	236-06 CHA	31/06
34515	Winyah Bay-Charleston Harbor Light 118	TRLB	11523	079-06 CHA	09/06
34570	Charleston Harbor South Channel Lighted Buoy 2	OFF STA	11523	264-06 CHA	35/06
34575	Battery Point Lighted Buoy BP	TRLT	11524	269-06 CHA	35/06
35070	South Edisto River Range A Front Light	REDUCED INT	11517	415-05 CHA	50/05
35185	Ashepoo-Coosaw Cutoff Range Front Daybeacon	DBN DEST	11517	365-05 CHA	47/05
35205.2	Ashepoo-Coosaw Cutoff Daybeacon 185	TRUB	11517	019-06 CHA	45/05
35310	Coosaw River Daybeacon 206	TRUB	11518	196-06 CHA	25/06
35485	Beaufort River Daybeacon 244	TRUB	11516	266-06 CHA	35/06
35835	New River Daybeacon 41	TRUB	11507	203-06 CHA	26/06
35840	Walls Cut Light 42	TRLB	11507	278-06 CHA	36/06
35850	Walls Cut Light 44	TRLB	11507	174-06 CHA	24/06
35855	Walls Cut Daybeacon 46	DBN DEST	11507	173-05	24/06
35880	Elba Island Cut Light 2	DBD DEST	11507	NA	35/06
36175	Skidaway Narrows Light 74	TRUB	11507	184-06 CHA	25/06
36380	Florida Passage Range Rear Daybeacon	DBN DEST	11507	177-06 CHA	25/06
36705	Creighton Narrows Light 157	MISSING	11507	201-06 CHA	26/06
36765	Old Teakettle Creek Daybeacon 167	TRUB	11507	170-06 CHA	22/06
36830	Rockdedundy River Light 184	TRLB	11507	199-06 CHA	26/06
37010	South Altamaha River Daybeacon 8	TRUB	11508	N/A	41/05
37320	Jekyll Creek Daybeacon 16	TRUB	11506	214-06 CHA	28/06
37355	Jekyll Creek Daybeacon 24	TRUB	11489	271-06 CHA	36/06
38167	Nassua Cutoff Buoy 46A	MISSING	11489	225-06 JAX	26/06
38190	Sawpit Creek Light 49	LT EXT/DBN DEST	11489	272-06 JAX	32/06
38200	Gunnison Cut Light 51	TRLB	11489	287-06 JAX	34/06
38345	Sisters Creek Light 88	LT EXT	11489	298-06 JAX	36/06
39450	Matanzas River Daybeacon 58	TRUB	11485	296-06 JAX	35/06
39470	Matanzas River Daybeacon 66	TRUB	11485	231-06 JAX	26/06

39475	Matanzas River Light 67	TRLB	11485	233-06 JAX	26/06
39480	Matanzas River Daybeacon 68	TRUB	11485	232-06 JAX	26/06
40195	Halifax River Daybeacon 44	TRUB	11485	174-06 JAX	20/06
40240	Halifax River Daybeacon 55	TRUB	11485	247-06 JAX	27/06
40473	Halifax River Daybeacon 68A	TRUB	11485	205/217-06 JAX	24/06
40490	Halifax River Daybeacon 72	TRUB	11485	200-06 Jax	23/06
40615	Ponce de Leon Cut Junction Daybeacon	DBN DEST	11485	493-05 JAX	51/05
41190	Indian River (North Section) Daybeacon 23	TRUB	11485	255-06 JAX	29/06
42550	Banana River Daybeacon 14	DBN DEST	11476	273-06 JAX	33/06
43690	Indian River (South Section) Daybeacon 69	LT EXT	11472	068-06 MIA	05/06
44820	Indian River (South Section) Daybeacon 168A	DBN IMCH/LTR MSNG/DAMGD	11472	NA	15/06
45635	Indian River (South Section) Daybeacon 222	TRUB	11472	387-06 MIA	31/06
45940	Great Pocket Light 4	LT EXT	11472	427-06 MIA	36/06
47135	Lake Wyman Daybeacon 60	TRUB	11467	373-06 MIA	29/06
47170	Hillsboro Drainage Canal Daybeacon 2	TRUB	11467	329-06 MIA	18/06
50640	St Lucie River Buoy 3	OFF STA	11472	399-06 MIA	33/06
50645	St Lucie River Buoy 4	OFF STA	11428	187-06 MIA	15/06
50695	Salerno Daybeacon 4	TRUB	11472	0170-05 MIA	13/05
50710	St Lucie River Daybeacon 8	TRUB	11472	270-06 MIA	21/06
51085	St Lucie River (Sorth Fork) Daybeacon 29	DBN DEST	11428	NA	28/06
51120	St Lucie Canal Daybeacon 38	TRUB	11428	109-06 MIA	09/06
51445	Lake Okeechobee (Rt 2) Daybeacon 13	TRUB	11428	001-06 MIA	45/05
51465	Lake Okeechobee (Rt 2) Daybeacon 19	TRUB	11428	N/A	45/05
51475	Lake Okeechobee (Rt 2) Daybeacon 21	DBD DEST	11428	673-05 MIA	45/05
51500	Lake Okeechobee (Rt 2) Daybeacon 26	TRUB	11428	002-06 MIA	45/05
51510	Lake Okeechobee (Rt 2) Daybeacon 28	TRUB	11428	N/A	45/05
51535	Lake Okeechobee (Rt 2) Daybeacon 34	TRUB	11428	003-06 MIA	45/05
51565	Lake Okeechobee (Rt 2) Daybeacon 41	TRUB	11428	004-06 MIA	45/05
51600	Lake Okeechobee (Rt 2) Daybeacon 53	TRUB	11428	N/A	45/05
51605	Lake Okeechobee (Rt 2) Daybeacon 54	TRUB	11428	N/A	45/05
51730	Bacom Point Channel Daybeacon 2	TRUB	11428	N/A	45/05
51750	Bacom Point Channel Daybeacon 6	TRUB	11428	006-06 MIA	02/06
51770	Lake Okeechobee (Rt 2) Daybeacon 80	TRUB	11428	N/A	45/05
51780	Lake Okeechobee (Rt 2) Daybeacon 84	TRLB	11428	N/A	45/05
51785	Lake Okeechobee (Rt 2) Daybeacon 86	TRUB	11428	005-06 MIA	45/05
51795	Lake Okeechobee (Rt 2) Daybeacon 89	DBD DEST	11428	678-05 MIA	45/05
51800	Lake Okeechobee (Rt 2) Daybeacon 91	TRUB	11428	N/A	45/05
51830	Lake Okeechobee (Rt 2) Daybeacon 98	DBD DEST	11428	NA	45/05
54055	Caloosahatchee River Range Front Light E/F	LT EXT	11427	0513-06 STP	17/06
54255	Caloosahatchee River Daybeacon 80	DBD DEST	11427	1019-06 STP	29/06
54765	Caloosahatchee River Range Front Light H 96	LT EXT	11427	0462-06 STP	15/06
54775	Caloosahatchee River Range Rear Light H/I	DBD DEST	11427	0480-06 STP	16/06
54795	Pine Island Sound Buoy 1	TRUB	11427	1875-05 STP	44/05
55890	Pine Island Sound Daybeacon 43	DBD DEST	11427		27/06
57050	Gasparilla Sound Channel Light 26	TRLB	11425	0344-06 STP	10/06
59120	Siesta Key-Tampa Bay Daybeacon 24	TRUB	11425	1028-06 STP	29/06
59180	Siesta Key-Tampa Bay Daybeacon 32	TRUB	11425	1157-06 STP	36/06
62285	St Joseph Sound Daybeacon 40	TRLB	11411	1108-06 STP	26/06
	AUTEC Site 2 Lighted Buoy 2	MISSING	26312	NA	12/06
	AUTEC Site 4 Light 2	LT EXT	26312	387-04 D7	09/04

Cap Haitien Daybeacon 11	DBD DEST	26147	NA	07/06
Cap Haitien Daybeacon 13	DBN DMGD	26147	NA	07/06

DISCREPANCIES (FEDERAL AIDS) CORRECTED

LLNR	Aid Name	Status	Chart No.	BNM Ref.	LNM St	LNM End
725	Jupiter Inlet Light	WATCHING PROPERLY	11472	NA	36/06	36/06
6345	Colonels Island Outbound Range Rear Light	WATCHING PROPERLY	11506	NA	36/06	36/06
10370	Stranahan River Lighted Buoy 30	WATCHING PROPERLY	11470	NA	36/06	36/06
10495	Miami Main Channel Lighted Buoy 6	WATCHING PROPERLY	11468	NA	35/06	36/06
10680.5	Lummus Island Turning Basin Light D	WATCHING PROPERLY	11468	NA	36/06	36/06
10680.7	Lummus Island Turning Basin Light E	WATCHING PROPERLY	11468	NA	36/06	36/06
10685	Fishermans Channel Light 11	WATCHING PROPERLY	11468	NA	36/06	36/06
10755	Miami T/B Art Light B	WATCHING PROPERLY	11468	NA	36/06	36/06
14985	Garrison Bight Channel Approach Light 2	WATCHING PROPERLY	11441	NA	36/06	36/06
17385	Big Marco Pass-Gordon Pass Daybeacon 56	WATCHING PROPERLY	11430	NA	36/06	36/06
22235	Egmont Channel Lighted Buoy 2	WATCHING PROPERLY	11415	NA	34/06	36/06
22490	Tampa Bay Cut B Channel Lighted Buoy 3B	WATCHING PROPERLY	11415	NA	33/06	36/06
22770	Tampa Bay Cut E Channel Lighted Buoy 3E	WATCHING PROPERLY	11416	NA	35/06	36/06
23450	Hillsborough Cut C Channel Lighted Buoy 26	WATCHING PROPERLY	11416	NA	36/06	36/06
23670	Tampa Bay Cut G Channel Range Rear Light	WATCHING PROPERLY	11416	NA	36/06	36/06
25755	Clearwater Marina Channel Light 6	WATCHING PROPERLY	11411	NA	30/06	36/06
37210	Mackay River Light 249	WATCHING PROPERLY	11489	NA	36/06	36/06
38360	Pablo Creek Light 5	WATCHING PROPERLY	11491	NA	36/06	36/06
38365	Pablo Creek Light 6	WATCHING PROPERLY	11489	NA	36/06	36/06
47475	Stranahan River Lighted Buoy 30	WATCHING PROPERLY	11470	NA	36/06	36/06
60500	Tampa Bay Cut B Channel Lighted Buoy 3B	WATCHING PROPERLY	11415	NA	33/06	36/06
60855	Gulfport Channel Daybeacon 2	WATCHING PROPERLY	11411	NA	36/06	36/06
60870	Boca Ciega Bay Daybeacon 26A	WATCHING PROPERLY	11411	NA	36/06	36/06
60895	Boca Ciega Bay Daybeacon 31	WATCHING PROPERLY	11411	NA	34/06	36/06
61120	Treasure Island Daybeacon 21	WATCHING PROPERLY	11411	NA	36/06	36/06
61790	Clearwater Harbor Light 12	WATCHING PROPERLY	11411	NA	34/06	36/06

DISCREPANCIES (PRIVATE AIDS)

LLNR	Aid Name	Status	Chart No.	BNM Ref.	LNM St	LNM End
295	Fripp Island Fish Haven B	MISSING	11513	N/A	30/03	
300	Fripp Island Drydock Fish Haven B	MISSING	11517	N/A	30/03	
325	Eagles Nest Reef B	BUOYSINK	11513	N/A	03/04	
655	Sebastian Inlet North Jetty Light	LT IMCH	11476	N/A	33/04	
665	Fort Pierce Fish Haven North B	MISSING	11472	N/A	29/04	
670	Fort Pierce Fish Haven South B	MISSING	11472	N/A	29/04	
774	Boca Raton Inlet South Jetty Light 1	LT EXT	11472	337-04 MIA	01/04	
840	NOAA DATA Lighted Buoy 41009	OFF STA	11480	560-04 MAY	37/04	
855	NOAA DATA Lighted Buoy 42036	ADRIFT	11400	1044-05 MIA	29/05	
953	Dry Rocks Buoy A	MISSING	11442	NA	14/06	
963.3	Conch Reef Buoy C	MISSING	11442	NA	14/06	
965.3	NOAA Life Support Lighted Buoy (AQUARIUS)	OFF STA	11463	019-04 KWT	05/04	
973	Davis Reef Buoy A	MISSING	11442	N/A	27/04	
993	Tennessee Reef Buoy A	MISSING	11453	NA	14/06	
1007.4	Looe Key Buoy C	MISSING	11442	NA	03/06	

1430	Redington Shores Fishing Pier North Light	LT EXT	11412	0927-05 STP	28/05
1435	Indian Shores Fish Haven South B	MISSING	11412	0912-06 STP	27/06
1440	Indian Shores Fish Haven Center B	BUOY DMGD	11412	0913-06 STP	27/06
1445	Indian Shores Fish Haven North B	BUOY DMGD	11412	0911-06 STP	27/06
1450	Indian Shores Artificial Reef Obstruction B	MISSING	11412	NA	19/06
2020	Belle Isle Marina Daybeacon 3	DBN IMCH	11532	N/A	21/03
2030	Belle Isle Marina Daybeacon 5	DBN IMCH	11532	N/A	21/03
2665	Cooper River Degaussing Range E PI Light	LT EXT	11524	747-00 GD7	33/00
2670	Cooper River Degaussing Range West PI Light	LT EXT	11524	015-00 CHA	02/00
2675	Charleston Park Pier South Light	LT EXT	11524	NA	51/05
2680	Charleston Park Pier North Light	LT EXT	11524	NA	48/05
2815	U South Navy Pier P Light (1)	LT EXT	11524	N/A	28/05
2865	U.S. Navy Pier B Light	LT EXT	11524	N/A	28/05
3015	Cooper River Ammunition Pier Light	LT EXT	11527	N/A	28/05
3245	Cooper River Mon Sta Obstruction Light E	LT IMCH	11527	N/A	28/05
3260	South Carolina Gas & Elec North Pier Light	LT EXT	11527	N/A	28/05
3265	South Carolina Gas & Elec South Pier Light	LT EXT	11527	N/A	28/05
3270	Cooper River Mon Sta Light C	LT EXT	11527	N/A	28/05
4355	Baynard Cove Creek Daybeacon 4	DBN DEST	11516	N/A	05/05
4360	Baynard Cove Creek Daybeacon 6	DBN IMCH	11516	N/A	05/05
6027	Cloister Hotel North Obstruction Light	LT EXT	11508	N/A	17/05
7210	Navy Fuel Pier Light (Mayport)	LT EXT	11491	254-06 JAX	43/03
7425	Blount Island Wharf Southwest Light	LT IMCH	11491	112-06 JAX	13/06
7430	Blount Island Wharf Northwest Light	LT IMCH	11491	111-06 JAX	13/06
9765	Sebastian Inlet Channel Daybeacon 8	DBN IMCH	11472	N/A	05/05
9770	Sebastian Inlet Channel Daybeacon 9	DBN DEST	11472	NA	09/06
9775	Sebastian Inlet Channel Daybeacon 10	DBN IMCH	11472	N/A	05/05
9880	Banty Saunders Rec Area Daybeacon 8	DBN IMCH	11475	N/A	13/05
10055	Sailfish Point Marina Channel Daybeacon 11	MISSING	11472	402-06 MIA	34/06
10720	MSRC Boundary Daybeacon A	DBN DEST	11468	669-05 MIA	45/05
10725	MSRC Boundary Daybeacon B	DBN DEST	11468	670-05 MIA	45/05
11550	Garden Cove Daybeacon 3	DBD DEST	11463	423-05 KWT	44/05
11560	Garden Cove Daybeacon 5	DBN DEST	11463	161-05 KWT	29/05
11565	Garden Cove Daybeacon 6	DBD DEST	11463	NA	44/05
11570	Garden Cove Daybeacon 7	DBD DEST	11463	NA	44/05
11575	Garden Cove Daybeacon 8	DBD DMGD	11463	NA	19/06
11580	Garden Cove Daybeacon 9	DBD DEST	11463	NA	44/05
11585	Garden Cove Daybeacon 10	DBD DEST	11464	428-05 KWT	38/05
11590	Garden Cove Daybeacon 11	DBD DMGD	11463	429-05 KWT	39/05
11605	Garden Cove Daybeacon 13	DBD DMGD	11464	327-05 KWT	39/05
11615	Garden Cove Daybeacon 15	DBD DMGD	11463	NA	19/06
11695	John Pennekamp Coral Reef Park Buoy F	MISSING	11451	NA	13/06
11705	Carysfort North Reef N Obstruction Daybeacon	DBD DEST	11451	NA	10/06
11730	Grecian Rocks Obstruction Daybeacon	DBN DEST	11451	333 / 553 KWT	39/05
11740	Mosquito Bank Obstruction Daybeacon	DBN DEST	11451	554-05 KWT	47/05
11745	White Bank Obstruction Daybeacon	DBN DEST	11451	332-05 KWT	39/05
11750	French Reef Obstruction Daybeacon	DBN DEST	11451	NA	15/06
11760	Molasses Reef North Obstruction Daybeacon	DBN DEST	11451	N/A	09/06
11765.1	Port Largo Channel Daybeacon 4	DBN DEST	11463	012/329/489 KE	02/05

11765.2	Port Largo Channel Daybeacon 6	DBN DEST	11464	578-05 KWT	52/05
11851	Newport Bay Daybeacon 1	DBN DMGD	11464	488-05 KWT	44/05
11851.4	Newport Bay Daybeacon 5	DBD DEST	11464	484-05 KWT	44/05
11851.5	Newport Bay Daybeacon 6	DBN DEST	11464	485-05 KWT	24/04
11851.6	Newport Bay Daybeacon 7	DBN DMGD	11464	486-05	44/05
11851.8	Newport Bay Daybeacon 9	DBN DEST	11464	487-05 KWT	24/04
11851.9	Newport Bay Daybeacon 10	DBN DEST	11464	N/A	24/04
11852.2	Newport Bay Daybeacon 15	DBN DEST	11464	N/A	24/04
11853.3	Newport Bay Auxiliary Channel Daybeacon 4	MISSING	11464	N/A	09/06
11915	Harborage Yacht Club Entrance Light 2	DBN IMCH/FADED	11451	NA	15/06
11917.5	Mariners Club Marina Daybeacon 8	DBD DEST	11463	328-05 KWT	39/05
11945	Key Largo Ocean Resort Light 2	LT EXT	11451	005-06 KWT	03/06
12501.4	Vaca Cut Daybeacon 8	DBN DEST	11453	140-06 KWT	30/06
12765	Holiday Isle Marina Daybeacon 1	DBD DEST	11451	499-05 KWT	45/05
12775	Holiday Isle Marina Daybeacon 3	DBD DEST	11451	N/A	44/05
12780	Holiday Isle Marina Daybeacon 4	DBD DEST	11451	501-05 KWT	44/05
12785	Holiday Isle Marina Daybeacon 5	DBD DEST	11451	502-05 KWT	44/05
12790	Holiday Isle Marina Daybeacon 6	DBD DEST	11451	503-05 KWT	44/05
13060	Shell Key Channel Daybeacon 18	DBD DEST	11449	315-05 KEY	39/05
13345	Lignumvitae Channel Daybeacon 15	DBD DMGD	11449	NA	31/06
13355	Caloosa Cove Channel Light 2	LT EXT/DBN DEST	11442	050-06 KWT	11/06
13365	Caloosa Cove Channel Daybeacon 6	DBD DEST	11442	496-05 KWT	44/05
13920	Ramrod Key Channel Daybeacon 1	MISSING	11446	NA	03/06
14067	Summerland Key Daybeacon 6	DBN IMCH	11445	N/A	28/05
14230	Upper Sugarloaf Sound Daybeacon 11	MISSING	11446	148-06 KWT	32/06
14310	Cudjoe Key Daybeacon 11	DBD DEST	11446	161-06 KWT	34/06
14665	Key West Oceanside Marina Daybeacon 1	DBN IMCH	11446	N/A	09/05
14705	Key West Oceanside Marina Daybeacon 9	DBN IMCH	11445	N/A	12/03
14980.2	Key West Mooring Field Light B	LT IMCH	11447	N/A	39/04
15270	Lake Passage Channel Daybeacon 4	DBN DEST	11441	NA	40/05
15275	Lake Passage Channel Daybeacon 6	DBD DEST	11441	NA	40/05
15290	Lake Passage Channel Daybeacon 10	DBN DEST	11441	088-06 KWT	39/05
15305	Lake Passage Channel Daybeacon 14	DBN DEST	11441	102-06 KWT	22/06
15320	Lake Passage Channel Daybeacon 17	DBD DEST	11441	N/A	40/05
16110	NPS Boat Basin South Channel Daybeacon 2	DBN IMCH	11429	1303-04 STP	35/04
16120	NPS Boat Basin South Channel Daybeacon 4	DBN IMCH	11429	1304-04 STP	48/03
16135	NPS Boat Basin West Channel Daybeacon 1	DBN IMCH	11430	1302-04 STP	35/04
16145	NPS Boat Basin West Channel Daybeacon 4	DBN IMCH	11429	1301-04 STP	35/04
16150	NPS Boat Basin West Channel Daybeacon 5	DBN IMCH	11429	1300-04 STP	48/03
16160	NPS Boat Basin West Channel Daybeacon 7	DBN DEST	11429	1299-04 STP	48/03
16375	Port of Islands Marina Daybeacon 41	DBN IMCH	11430	1298-04 STP	35/04
16665	Blackwater River Daybeacon 56	DBN DEST	11430	NA	13/06
16905	Caxambas Pass Entrance Light C	DBN DEST	11430	NA	44/05
16910	Caxambas Pass Daybeacon 1	DBD DMGD/DBD DEST	11430	0119-06 STP	05/06
17105	Isles of Capri Daybeacon 2	DBN IMCH	11430	N/A	48/03
17120	Isles of Capri Daybeacon 5	DBN DEST	11430	NA	13/06
17140	Isles of Capri Daybeacon 9	DBN IMCH	11430	0934-05 STP	13/05
17710	Doctors Pass Daybeacon 1A	MISSING	11430	1160-06 STP	36/06
17760	Doctors Pass Daybeacon 12	MISSING	11430	1161-06 STP	36/06
17775	Wiggins Pass Safe Water Light WP	DBD DEST	11427	NA	14/06

18067	Port Sanibel Marina Daybeacon 1	DBD DMGD	11427	0556-06 STP	18/06
18067.8	Port Sanibel Marina Daybeacon 9	DBN IMCH	11472	N/A	51/04
18150	Hurricane Bay Marina West Channel Daybeacon 4	TRUB	11427	713-06 STP	22/06
18995	Alternate Route Channel Daybeacon 3	DBN DEST	11427	N/A	18/03
18995.06	Estero Pointe Channel Daybeacon 12	DBN IMCH	11427	1316-04 STP	35/04
19000	Alternate Route Channel Daybeacon 4	DBN DMGD	11427	NA	13/06
19005	Alternate Route Channel Daybeacon 5	DBN DMGD	11427	NA	13/06
19015	Alternate Route Channel Daybeacon 7	DBN DEST	11427	1319-04 STP	15/04
19025	Alternate Route Channel Daybeacon 9	DBN DEST	11427	N/A	15/04
19030	Alternate Route Channel Daybeacon 10	DBN IMCH	11427	N/A	18/03
19065	Coconut Channel Daybeacon 7	DBN IMCH	11427	N/A	17/04
19080	Coconut Channel Daybeacon 10	DBN DEST	11427	596-04 STP	18/04
19250	Southern Passage Daybeacon 5	DBD DEST	11427	NA	13/06
19270	Southern Passage Daybeacon 9	DBD DEST	11427	NA	13/06
19275	Southern Passage Daybeacon 10	DBN IMCH	11427	N/A	17/04
19280	Southern Passage Daybeacon 11	Status Unreported	11427	NA	13/06
19305	Southern Passage Daybeacon 16	DBN IMCH	11427	1325-04 STP	35/04
19320	Southern Passage Daybeacon 19	DBN IMCH	11427	N/A	35/04
19335	Spring Creek Daybeacon 2	DBD DMGD	11427	NA	13/06
19340	Spring Creek Daybeacon 4	DBN DEST	11427	N/A	28/05
19350	Spring Creek Daybeacon 6	DBN DMGD/DBN IMCH	11427	1001-05 STP	28/05
19360	Spring Creek Daybeacon 8	DBN IMCH/DBD DEST	11427	1002-05 STP	28/05
19365	Spring Creek Daybeacon 9	DBN IMCH	11427	N/A	28/05
19370	Spring Creek Daybeacon 11	DBN DEST	11427	N/A	28/05
19430	Spring Creek Daybeacon 26	DBN IMCH	11427	N/A	28/05
19445	Spring Creek Daybeacon 30	DBN IMCH/DBD DEST	11427	N/A	35/04
19510	Spring Creek Daybeacon 50	DBN DEST	11427	N/A	28/05
20355	Upper Myakka River Daybeacon A	DBN IMCH	11426	N/A	44/04
20450	Ponce De Leon Park Channel Light 2	LT IMCH	11426	N/A	44/04
20460	Ponce De Leon Park Channel Daybeacon 6	DBN DEST	11426	N/A	02/05
20525	Isles Channel Daybeacon 7	DBN IMCH	11426	N/A	02/05
20560	Isles Cross Channel Daybeacon 3	DBN DEST	11426	N/A	02/05
21205	Peace River (North Section) Daybeacon 5	DBN IMCH	11426	0943-05 STP	13/05
21220	Peace River (North Section) Daybeacon 10	DBN IMCH	11426	0941-05 STP	13/05
21245	Charlotte Harbor Yacht Club Daybeacon 1	DBN IMCH	11426	N/A	08/04
21250	Charlotte Harbor Yacht Club Daybeacon 2	DBN IMCH	11426	N/A	02/05
21255	Charlotte Harbor Yacht Club Daybeacon 3	DBN IMCH	11426	N/A	08/04
21260	Charlotte Harbor Yacht Club Daybeacon 4	DBN IMCH	11426	N/A	02/05
21265	Charlotte Harbor Yacht Club Daybeacon 5	DBN IMCH	11426	N/A	08/04
21270	Charlotte Harbor Yacht Club Daybeacon 6	DBN IMCH	11426	N/A	02/05
21275	Charlotte Harbor Yacht Club Daybeacon 7	DBN IMCH	11426	N/A	02/05
21280	Charlotte Harbor Yacht Club Daybeacon 8	DBN IMCH	11426	N/A	02/05
21285	Charlotte Harbor Yacht Club Daybeacon 9	DBN IMCH	11426	N/A	08/04
21345	Stump Pass Light 1	MISSING	11425	722-06 STP	22/06
21355	Stump Pass Daybeacon 4	Status Unreported	11425	722-06 STP	22/06
21360	Stump Pass Daybeacon 5	DBN DEST	11425	N/A	22/06
21370	Stump Pass Daybeacon 6	DBN DEST	11425	720-06 STP	22/06

21375	Stump Pass Daybeacon 7	DBN DEST	11425	719-06 STP	22/06
21395	Stump Pass Marina Daybeacon 3	DBN DEST	11425	1669-05 STP	45/05
21400	Stump Pass Marina Daybeacon 4	OFF STA	11425	1670-05 STP	45/05
21405	Stump Pass Marina Daybeacon 5	OFF STA	11425	1671-05 SEC ST	45/05
21410	Stump Pass Marina Daybeacon 6	OFF STA	11425	1672 / 1697 STP	45/05
21415	Stump Pass Marina Light	LT IMCH	11425	N/A	19/03
21456.03	Dona Bay Channel Daybeacon 13	DBN DEST	11425	0874-05 STP	23/05
21456.12	Dona Bay Channel Daybeacon 21	DBN IMCH	11425	0875-05 STP	23/05
21500.1	Big Sarasota Pass Daybeacon 1	DBD DEST	11425	NA	37/05
21505	Big Sarasota Pass Daybeacon 9	DBN DEST	11425	679-06 STP	22/06
21567.5	Lido Key Channel Daybeacon 16	DBD DMGD	11425		22/06
21570.2	North Siesta Key Daybeacon 3	DBD DEST	11425	0354-06 STP	11/06
21660	Country Club Shores Daybeacon 2	DBN IMCH	11425	N/A	28/05
21665	Country Club Shores Daybeacon 4	DBN IMCH	11425	N/A	28/05
21670	Country Club Shores Daybeacon 6	DBD DEST	11425	0840-05 STP	23/05
21675	Country Club Shores Daybeacon 8	DBD DMGD	11425		22/06
21680	Country Club Shores Daybeacon 10	DBN IMCH	11425	N/A	28/05
21685	Country Club Shores Daybeacon 12	DBD DEST	11425	N/A	28/05
21690	Country Club Shores Daybeacon 14	DBN DEST	11425	N/A	28/05
21950	Fifty-Ninth Street Boat Ramp Daybeacon 3	DBN DEST	11415	N/A	28/05
22815.5	MacDill Air Force Base Prohibited Area Daybeacon (24)	DBN DEST	11416	N/A	24/03
23135	Big Bend Channel East Upper Range Rear Light	LT EXT	11400	1031-06 STP	29/06
23810	Weedon Island Channel Range Rear Light	LT IMCH/REDUCED INT/DBN DEST	11416	1091-06 STP	07/06
23950.5	Old Tampa Bay Pipeline West Light	LT EXT	11416	NA	13/06
23985	Culbreath Cay Daybeacon 1	DBN DEST	11416	0876-05 STP	13/05
23990	Culbreath Cay Daybeacon 2	DBN DEST	11416	0877-05 STP	13/05
23995	Culbreath Cay Daybeacon 4	DBN DEST	11416	N/A	13/05
24000	Culbreath Cay Daybeacon 5	DBN IMCH	11416	856-04 STP	26/04
24005	Culbreath Cay Daybeacon 6	DBN IMCH	11416	856-04 STP	26/04
24010	Culbreath Cay Daybeacon 7	DBN DEST	11416	N/A	13/05
24015	Culbreath Cay Daybeacon 8	DBN DEST	11416	857-04 STP	26/04
24040	Bridgeview Channel Daybeacon 1	DBN DEST	11416	N/A	13/05
24050	Bridgeview Channel Daybeacon 3	DBN DMGD	11416	N/A	14/01
24055	Bridgeview Channel Daybeacon 4	DBN IMCH	11416	390-04 STP	12/04
24615	Apollo Beach Daybeacon 3	DBN DEST	11416	166-06 STP	06/06
24755	Point Pinellas Daybeacon 6	LT EXT	11415	0148-06 STP	05/06
24785	Little Bayou Approachroach Daybeacon 10	DBD DMGD	11416	NA	10/06
24855	Coquina Key Cut Daybeacon 9	DBD DMGD	11415	NA	10/06
24885	Big Bayou Daybeacon 5	DBN DEST	11416	1108-05 STP	28/05
24890	Big Bayou Daybeacon 6	DBN DEST	11415	1152-06 STP	09/06
25025.8	Smacks Bayou Daybeacon 12	DBD DEST	11416	0741-06 STP	22/06
25025.9	Smacks Bayou Daybeacon 13	Status Unreported	11416	NA	51/05
25065	Bayou Grande Channel Daybeacon 9	DBN DEST	11416	0560-05 STP	15/05
25245	Bayou Grande Channel Daybeacon 51	DBD DEST	11416	NA	10/06
25510.1	Dent Channel Daybeacon 2	DBN DEST	11411	0538-06 STP	18/06
25515	Dent's Channel Daybeacon 3	TRLB	11415	1200-05 STP	29/05
25555	South Dent Channel Daybeacon 7	DBN DEST	11411	N/A	24/03
25600.01	Treasure Island North Terminal Groin Obstruction Light	LT EXT	11411	1089-06 STP	33/06
25655	Clearwater Beach Lighted Buoy A	OFF STA	11412	N/A	11/05
25660	Clearwater Beach Lighted Buoy B	OFF STA	11412	N/A	11/05
25665	Clearwater Beach Lighted Buoy C	OFF STA	11412	0936-05 STP	11/05
25670	Clearwater Beach Lighted Buoy D	OFF STA	11412	0935-05 STP	11/05

25675	Clearwater Beach Lighted Buoy E	OFF STA	11412	N/A	11/05
26675	American Marina Channel Daybeacon 9	DBN IMCH/DBD DEST	11412	N/A	02/05
26685	American Marina Channel Daybeacon 11	DBN IMCH/DBD DEST	11412	N/A	02/05
26765	Pithlachascottee River Daybeacon 43	DBD DEST		NA	13/06
27080	Hudson Creek Daybeacon 18	DBN DEST	11409	NA	18/06
27190	Sea Pines Channel Daybeacon 14	DBN DEST	11409	NA	13/06
27345	Aripeka Daybeacon 18	DBN DMGD	11409	0927-06 STP	27/06
27910	Hernando Beach Channel Daybeacon 102	DBN DEST	11409	NA	36/06
28330	Chassahowitzka Daybeacon 23	DBN IMCH	11409	1099-05 STP	28/05
28345	Chassahowitzka Daybeacon 27	DBN DEST	11409	1098-05 STP	28/05
28773	Crystal Bay Scallop Platform Light	LT IMCH	11409	061-04 STP	02/04
28911.6	Crystal River Daybeacon 4	LT EXT	11409	0671-06 STP	21/06
28915	Salt River Daybeacon 2	DBN IMCH	11409	NA	13/06
28920	Salt River Daybeacon 3	DBN IMCH	11409	NA	13/06
28925	Salt River Daybeacon 5	DBN IMCH	11409	NA	13/06
28930	Salt River Daybeacon 6	DBN IMCH	11409	NA	13/06
28935	Salt River Daybeacon 7	DBN IMCH	11409	NA	13/06
28940	Salt River Daybeacon 8	DBN DMGD/DBN IMCH	11409	0418-06 STP	13/06
28945	Salt River Daybeacon 9	DBN IMCH	11409	NA	13/06
28950	Salt River Daybeacon 10A	DBN IMCH	11409	NA	13/06
28953.2	Crystal River Daybeacon 28	DBN DEST	11409	0892-05 STP	24/05
28953.4	Crystal River Daybeacon 29	DBD DMGD	11409	0204-06 STP	24/05
28980	Florida Power Corporation Channel Light 7	LT EXT	11408	NA	13/06
29010	Florida Power Corporation Channel Light 14	LT EXT	11408	NA	13/06
29030	Florida Power Corporation Channel Light 20	LT EXT	11408	NA	13/06
29035	Florida Power Corporation Channel Light 21	LT EXT	11408	NA	13/06
29075	Florida Power Corporation Channel Light 32	LT EXT	11408	NA	13/06
29080	Florida Power Corporation Channel Light 33	LT EXT	11408	NA	13/06
29130	Florida Power Corporation Channel Light 43	LT EXT	11408	NA	13/06
30085	Suwannee River Alligator Pass Light 2	DBD DEST	11408	NA	17/06
30170	Suwannee River McGriff Pass Daybeacon 1	LT EXT	11408	NA	13/06
30270	Salt Creek Daybeacon 2	HAZ NAV/DBN DEST	11408	NA	13/06
30280	Salt Creek Daybeacon 5	DBD DMGD	11408	NA	13/06
30315	Salt Creek Daybeacon 17	HAZ NAV/DBN DEST	11408	1373-05 STP	35/05
30330	Salt Creek Daybeacon 21	DBN DMGD	11408	NA	13/06
30690	Cedar Island Daybeacon 1	DBN DMGD	11407	506-01 STP	28/01
30695	Cedar Island Daybeacon 2	DBN DMGD	11407	507-01 STP	28/01
30825	TMT Outer Dolphin Obstruction Light	LT EXT	25670	319-05 SJN	47/05
30830	TMT Middle Dolphin Obstruction Light	LT EXT	25670	320-05 SJN	47/05
31120	Caballo Channel Range Front Light (1)	LT IMCH/DBD DEST	25668	NA	14/06
31125	Caballo Channel Range Rear Light (1)	LT IMCH	25668	NA	14/06
31230	Sea Lovers Pier Buoy West Light	LT EXT	25667	N/A	41/04
31535	Sonda de Vieques Obstruction Lighted Buoy LAE	MISSING	25664	N/A	16/97
31915	Aguirre Power Plant Lighted Buoy 6	LT EXT	25687	096-06 SJN	16/06
32420	Redhook Bay Buoy 1	BUOY DMGD	25647	365-02 GAN	45/02
32425	Redhook Bay Buoy 2	OFF STA	25647	N/A	45/04
32430	Redhook Bay Buoy 3	DBN DMGD	25647	NA	19/06
32440	Redhook Bay Junction Buoy P	OFF STA	25647	N/A	45/04
32450	Redhook Bay South Channel Buoy 2	OFF STA	25647	N/A	45/04

32455	Redhook Bay Buoy 5	MISSING	25647	NA	19/06
32460	Redhook Bay Buoy 6	MISSING	25647	N/A	45/04
32780	Cruz Bay Buoy 1	MISSING	25647	359-02 GAN	45/02
32805	Cruz Creek Channel Buoy 1C	MISSING	25647	360-02 GAN	45/02
32810	Cruz Creek Channel Buoy 2C	MISSING	25647	NA	19/06
32965	Christiansted Schooner Channel Lighted Buoy 7	LT EXT	25645	211-04 GAN	30/04
32975	Christiansted Schooner Channel Lighted Buoy 9	LT EXT	25645	030-05 GAN	06/05
32985	Christiansted Schooner Lighted Buoy 11	LT IMCH	25645	031-05 GAN	06/05
33200	Lime Tree Bay Port Basin Light 15	LT EXT	25641	067-06 SJN	13/06
33315	Krause Lagoon Cross Channel Lighted Buoy 1	MISSING	25641	065-06 SJN	13/06
33365	Frederiksted Pier South Light	LT EXT	25644	233-04 GAN	35/04
34745	Johns Island Dock Obstruction Light	LT EXT/DBN DEST	11518	N/A	27/04
35015	Whooping Island Pier Obstruction Light	LT EXT	11518	NA	51/05
35425	Marsh Harbor Marina Daybeacon 4	DBD DMGD	11518	N/A	51/04
35585	Trenchards Inlet Tide Gauge Daybeacon	DBN IMCH	11516	N/A	03/04
35590	Station Creek West Tide Gauge Daybeacon	DBN DEST	11516	N/A	03/04
35630	Ribaut Island Dock Light G	LT EXT	11507	N/A	04/05
35815.5	Braddock Cove Creek Jetty Light	LT IMCH	11516	N/A	05/05
36232	Delegal Creek Channel Buoy 3	MISSING	11507	N/A	28/05
36233	Delegal Creek Channel Buoy 4	MISSING	11507	N/A	28/05
36235	Delegal Creek Channel Buoy 5	BUOYDMGD	11507	N/A	28/05
38390	Queens Harbour Channel Daybeacon 1	DBD DEST		107-06 JAX	13/06
38400	Queens Harbour Channel Daybeacon 3	DBD DEST	11489	108-06 JAX	13/06
38405	Queens Harbour Channel Daybeacon 4	DBD DEST	11489	109-06 JAX	13/06
38410	Queens Harbour Channel Daybeacon 5	DBD DEST	11489	110-06 JAX	13/06
38550	Jacksonville Yacht Basin Channel Daybeacon 12	DBD DEST	11489	113-06 JAX	13/06
38843.6	Vilano Marina North Channel Daybeacon 4	DBN IMCH	11485	N/A	06/04
38915	Salt Run Daybeacon 1	DBN DEST	11485	226-02 MAY	18/02
38975	Salt Run Daybeacon 13	DBN DEST	11485	362-05 JAX	37/05
39915	Ormond Beach Daybeacon 3	DBN IMCH	11485	N/A	44/04
41575	Sykes Creek Daybeacon 5	DBD DMGD	11485	NA	14/06
41620	Sykes Creek Daybeacon 19	DBN DMGD	11485	NA	20/06
42120	Whitley Marine Daybeacon 3	DBN DEST	11485	NA	10/06
42130	Indian Cove Marina Daybeacon 1	DBN DEST	11485	N/A	17/04
42135	Indian Cove Marina Daybeacon 2	DBN IMCH	11485	N/A	17/04
42290	Diamond 99 Marina Daybeacon 1	DBD DEST	11485	NA	14/06
42300	Diamond 99 Marina Daybeacon 3	DBD DEST	11472	NA	14/06
42310	Diamond 99 Marina Daybeacon 5	DBD DEST	11472	NA	14/06
42490.1	Manatee Cove Marina Daybeacon 1	DBN DEST	11476	N/A	31/04
42490.3	Manatee Cove Marina Daybeacon 3	DBN IMCH	11476	N/A	02/05
42491	Manatee Cove Marina Range Front Light	LT EXT	11476	N/A	19/04
42492	Manatee Cove Marina Range Rear Light	LT EXT/DBN DEST	11476	N/A	44/04
42830	Central Avenue Entrance Channel Light 2	LT EXT	11476	480-05 JAX	49/05
43030	Kelly Park Channel Light 1	LT EXT	11476	N/A	16/04
43045	Kelly Park Channel Daybeacon 4	DBN DEST	11476	NA	13/06
43055	Kelly Park Channel Daybeacon 7	DBN DEST	11476	NA	13/06
43115	Intracoastal Marina Channel Daybeacon 1	DBN IMCH	11476	N/A	07/05
43120	Intracoastal Marina Channel Daybeacon 2	DBN IMCH	11476	N/A	07/05
43125	Intracoastal Marina Channel Daybeacon 3	DBN DEST	11476	N/A	14/05

43135	Intracoastal Marina Channel Daybeacon 5	DBN IMCH	11476	N/A	14/05
43140	Intracoastal Marina Channel Daybeacon 6	DBN IMCH	11476	N/A	14/05
43145	Intracoastal Marina Channel Daybeacon 7	DBN IMCH	11476	N/A	14/05
43160	Intracoastal Marina Channel Daybeacon 10	DBN IMCH	11476	N/A	14/05
43180	Front Street Channel Daybeacon 2	DBD DEST	11472	NA	15/06
43185	Front Street Channel Daybeacon 3	DBD DEST	11472	NA	15/06
43190	Front Street Channel Daybeacon 4	DBD DEST	11472	NA	15/06
43195	Front Street Channel Daybeacon 5	DBD DEST	11472	NA	15/06
43200	Front Street Channel Daybeacon 6	DBD DEST	11472	NA	15/06
43300	Rhum Cove Marina Daybeacon 1	DBD DEST	11476	NA	15/06
43305	Rhum Cove Marina Daybeacon 2	DBD DEST	11476	NA	15/06
43310	Rhum Cove Marina Daybeacon 3	DBD DEST	11476	NA	15/06
43315	Rhum Cove Marina Daybeacon 4	DBD DEST	11476	NA	15/06
43350	Tucker Channel Daybeacon 1	DBN DMGD	11472	N/A	19/04
43355	Tucker Channel Daybeacon 2	DBN DMGD	11472	N/A	19/04
43575	Coconut Point Daybeacon 1	DBN IMCH	11472	N/A	44/04
43580	Coconut Point Daybeacon 2	DBN IMCH	11472	N/A	44/04
43585	Coconut Point Daybeacon 3	DBN IMCH	11472	N/A	11/05
43590	Coconut Point Daybeacon 4	DBN IMCH	11472	N/A	11/05
43595	Coconut Point Daybeacon 5	DBN IMCH	11472	N/A	11/05
43600	Coconut Point Daybeacon 6	DBN IMCH	11472	N/A	44/04
43615	Inlet Marina Daybeacon 1	DBN DEST	11476	N/A	28/05
43620	Inlet Marina Daybeacon 2	DBD DMGD/DBN IMCH	11476	N/A	15/01
43625	Inlet Marina Daybeacon 3	DBD DEST	11476	N/A	11/05
43630	Inlet Marina Daybeacon 4	DBD DEST	11476	N/A	28/05
43630.3	Sembler Marina North Channel Daybeacon 4	DBD DEST	11472	NA	09/06
43630.4	Sembler Marina North Channel Daybeacon 5	DBD DEST	11472	NA	09/06
43630.5	Sembler Marina North Channel Daybeacon 6	DBD DEST	11472	NA	09/06
43630.6	Sembler Marina North Channel Daybeacon 7	DBD DEST	11472	NA	09/06
43630.7	Sembler Marina North Channel Daybeacon 8	DBN DMGD/DBD DEST	11472	NA	09/06
43630.8	Sembler Marina North Channel Daybeacon 9	DBN IMCH/DBD DEST	11472	N/A	10/03
43640	Sembler Daybeacon 2	DBN IMCH/DBD DEST	11476	N/A	11/05
43655	Sembler Daybeacon 5	DBN IMCH/DBD DEST	11476	N/A	11/05
43660	Sembler Daybeacon 6	DBD DEST	11476	N/A	11/05
43685.2	Channel 68 Marina Daybeacon 2	DBN DEST	11472	N/A	10/03
43700	River Run Daybeacon 1	DBN IMCH/DBD DEST	11472	N/A	17/05
43710	River Run Daybeacon 3	DBN IMCH/DBD DEST	11472	N/A	17/05
43720	River Run Daybeacon 5	DBN IMCH	11472	N/A	21/05
44005	Grand Harbor Marina Daybeacon 8	DBN IMCH	11472	N/A	28/05
44025	Grand Harbor Marina Daybeacon 12	DBN IMCH	11472	N/A	28/05
44035	Grand Harbor Marina Daybeacon 14	DBN DEST	11472	N/A	28/05
44045	Grand Harbor Marina Daybeacon 16	DBN IMCH	11472	N/A	28/05
44065	Bermuda Bay Daybeacon 1	DBN DEST/DBN IMCH	11472	N/A	08/04
44070	Bermuda Bay Daybeacon 2	DBN IMCH	11472	N/A	28/05
44075	Bermuda Bay Daybeacon 3	DBN IMCH	11472	N/A	28/05
44080	Bermuda Bay Daybeacon 4	DBN DEST	11472	N/A	29/05
44085	Bermuda Bay Daybeacon 5	DBN IMCH	11472	N/A	10/03
44090	Bermuda Bay Daybeacon 6	DBN DEST	11472	N/A	28/05
44095	Bermuda Bay Daybeacon 7	DBN IMCH	11472	N/A	28/05

44105	Bermuda Bay Daybeacon 9	DBN IMCH	11472	N/A	28/05
44110	Bermuda Bay Daybeacon 10	DBN DEST/DBN IMCH	11472	N/A	08/04
44115	Bermuda Bay Daybeacon 11	DBN IMCH	11472	N/A	10/03
44120	Bermuda Bay Daybeacon 12	DBN IMCH	11472	N/A	08/04
44235	Vero Marine Center Daybeacon 6	DBD DEST	11476	NA	13/06
44240	Vero Marine Center Buoy 8	Status Unreported	11476	NA	13/06
44245	Vero Marine Center Buoy 8A	MISSING	11476	NA	13/06
44250	Vero Marine Center Buoy 8B	MISSING	11476	NA	13/06
44255	Vero Marine Center Buoy 10	MISSING	11476	NA	13/06
44280	Riomar Daybeacon 2	DBN IMCH	11476	NA	13/06
44285	Riomar Daybeacon 3	DBD DEST	11476	NA	13/06
44310	Riomar Daybeacon 8	DBN IMCH	11476	NA	13/06
44355	Memorial Island Park Buoy 2	MISSING	11476	NA	13/06
44370	Memorial Island Park Buoy 5	OFF STA	11476	NA	21/06
44375	Memorial Island Park Buoy 6	MISSING	11476	N/A	08/04
44425	Vero Isles Daybeacon 8	DBN IMCH: EXTRA SIGN	11476	NA	13/06
44430	Vero Isles Daybeacon 10	DBN DEST	11476	NA	13/06
44435	Vero Isles Daybeacon 12	DBN DEST	11476	NA	13/06
44450	Vero Isles Daybeacon 18	DBN DEST	11476	NA	13/06
44540	Indian River Boat Ramp Daybeacon 2	DBN IMCH	11476	NA	13/06
44570	Indian River Boat Ramp Daybeacon 8	DBN IMCH	11476	NA	13/06
44845	Linkport Channel Daybeacon 1	DBN DEST	11472	NA	36/06
44848	Linkport Channel Daybeacon 2	DBD DEST	11472	NA	36/06
44850	Linkport Channel Daybeacon 3	DBD DEST	11472	NA	36/06
44980	Village Marina Daybeacon 1	DBN DEST	11476	N/A	27/04
45200	Ft Pierce City Marina Channel Daybeacon 1	DBN DEST	11475	N/A	13/05
45205	Ft Pierce City Marina Channel Daybeacon 2	DBN IMCH	11475	N/A	13/05
45210	Ft Pierce City Marina Channel Daybeacon 3	DBN DEST	11475	N/A	13/05
45215	Ft Pierce City Marina Channel Daybeacon 4	DBN DEST	11475	N/A	13/05
45220	Ft Pierce City Marina Channel Daybeacon 5	DBN DEST	11475	N/A	13/05
45225	Ft Pierce City Marina Channel Daybeacon 6	DBN DEST	11475	N/A	13/05
45230	Ft Pierce City Marina Channel Daybeacon 7	DBN IMCH	11475	N/A	27/04
45235	Ft Pierce City Marina Channel Daybeacon 8	DBN DEST	11475	N/A	13/05
45240	Ft Pierce City Marina Channel Daybeacon 9	DBN DEST	11475	N/A	13/05
45245	Ft Pierce City Marina Channel Daybeacon 10	DBN DEST	11475	N/A	27/04
45250	Ft Pierce City Marina Channel Daybeacon 11	DBN DEST	11475	N/A	27/04
45540	Fairwinds Cove Daybeacon 7	DBN IMCH	11476	N/A	15/04
45560	Fairwinds Cove Daybeacon 12	DBN IMCH	11476	N/A	15/04
45585	Rigels Cove Channel Daybeacon 1	DBN IMCH	11472	N/A	15/04
45590	Rigels Cove Channel Daybeacon 2	DBN IMCH	11472	N/A	15/04
45595	Rigels Cove Channel Daybeacon 3	DBN IMCH	11472	N/A	15/04
45600	Rigels Cove Channel Daybeacon 4	DBN IMCH	11472	N/A	15/04
45605	Rigels Cove Channel Daybeacon 5	DBN IMCH	11472	N/A	15/04
45610	Rigels Cove Channel Daybeacon 6	DBN IMCH	11472	N/A	15/04
45615	Rigels Cove Channel Daybeacon 7	DBN DEST	11472	N/A	15/04
45620	Rigels Cove Channel Daybeacon 8	DBN IMCH	11472	N/A	15/04
45625	Rigels Cove Channel Daybeacon 9	DBN IMCH	11472	N/A	15/04
45630	Rigels Cove Channel Daybeacon 10	DBN IMCH	11472	N/A	15/04
45790	Anglers Cove Daybeacon 1	DBN DEST	11476	N/A	19/04

45795	Anglers Cove Daybeacon 2	DBN DEST	11476	N/A	19/04
45800	Anglers Cove Daybeacon 3	DBN DEST	11476	N/A	19/04
45805	Anglers Cove Daybeacon 4	DBN DEST	11476	N/A	19/04
45810	Anglers Cove Daybeacon 6	DBN DEST	11476	N/A	19/04
45885	Sewalls Point Daybeacon 1	DBN IMCH	11472	N/A	15/04
45890	Sewalls Point Daybeacon 2	DBN IMCH	11472	277-03 MIA	21/03
45895	Sewalls Point Daybeacon 3	DBN IMCH	11472	N/A	13/04
45900	Sewalls Point Daybeacon 4	DBN IMCH	11472	N/A	13/04
45980	Miles Grant Daybeacon 2	DBN IMCH	11476	N/A	21/04
46005	St Lucie Inlet State Park Channel Daybeacon 1	DBD DEST	11476	646-05 MIA	45/05
46010	St Lucie Inlet State Park Channel Daybeacon 2	DBD DEST	11476	647-05 MIA	45/05
46325	Loxahatchee River Light 16	LT EXT/DBN DEST	11472	314-06 MIA	25/06
46625	New Port Cove Marine Ctr Daybeacon 3	DBN DEST	11472	N/A	28/05
46630	New Port Cove Marine Ctr Daybeacon 4	DBN DEST	11472	N/A	28/05
46640	New Port Cove Marine Ctr Daybeacon 6	DBN DEST	11472	N/A	28/05
46650	New Port Cove Marine Ctr Daybeacon 8	DBN DEST	11472	NA	51/05
46770	Rybovich Spencer North Channel Daybeacon 5	DBD DEST	11472	NA	51/05
46785	Rybovich Spencer Ctr Channel Daybeacon 2	DBD DMGD	11472	NA	13/06
46790	Rybovich Spencer Ctr Channel Daybeacon 3	DBD DEST	11472	NA	51/05
46800	Rybovich Spencer South Channel Daybeacon 1	DBN IMCH	11472	NA	13/06
46805	Rybovich Spencer South Channel Daybeacon 2	DBD DMGD	11472	NA	51/05
46855	West Palm Beach Daybeacon 1	DBN IMCH	11476	N/A	28/05
46865	West Palm Beach Daybeacon 3	DBN DEST	11476	N/A	28/05
47640	Golden Gates Marina South Obstruction Light	DBN DEST	11467	499-05 MIA	37/05
47645	Williams Island Daybeacon 1	DBN DEST	11467	286-03 MIA	22/03
47850	Keystone Point Channel Daybeacon 4	DBN DEST	11467	307-06 MIA	24/06
47880	Keystone Point Channel Daybeacon 16	DBN DEST	11467	308-06	24/06
48130	Sunset Harbour Channel Daybeacon 13	DBN IMCH	11468	0271-05 MIA	22/05
48250	Miami Shores Channel Daybeacon 8	MISSING	11467	075-06	05/06
48500	Claughton Island North Obstruction Daybeacon	DBN DMGD	11465	330-06 MIA	27/06
48505	Claughton Island Middle Obstruction Daybeacon	DBN DEST	11465	637-04 MIA	51/04
48570	Villa Regina Daybeacon 5	DBN DEST	11465	587-03 MIA	49/03
48610	Deering Channel Daybeacon 1	DBN IMCH	11465	N/A	24/04
48615	Deering Channel Light 2	LT EXT/DBN DEST	11465	774-05 MIA	50/05
48700	Grove Island Channel Daybeacon 8	DBN IMCH	11465	N/A	24/04
48705	Grove Island Channel Light 9	LT EXT	11465	N/A	24/04
48730	Grove Island Channel Daybeacon 14	DBN IMCH	11465	N/A	24/04
48750	L'hermitage Light 1	LT EXT	11465	N/A	42/05
48755	L'hermitage Light 2	LT EXT	11465	643-04 MIA	52/04
48775	L'hermitage Daybeacon 6	DBN DEST	11465	237-01 MIA	21/01
48780	Crandon Park Marina Channel Light 1	LT EXT	11465	563-05	41/05
48845	Crandon Park Marina Channel Light 14	MISSING	11467	687/802-05 MIA	46/05
49005	Dinner Key Marina South Channel Daybeacon 6	DBN DEST	11467	446-05 MIA	35/05
49030	Dinner Key Marina South Channel Daybeacon 11	DBN DEST	11465	447-05 MIA	35/05
49035	Dinner Key Marina South Channel Daybeacon 12	DBN DEST	11465	448-05 MIA	35/05
49040	Dinner Key Marina South Channel Light 13	LT EXT	11465	406-06 MIA	35/06
49085	Key Biscayne Yacht Club Light 4	LT IMCH	11465	597-02 MIA	49/02

49160	Four Way Channel Directional Daybeacon	DBN DEST	11465	N/A	39/97
49190	Four Way Channel Daybeacon 8	DBN DEST	11465	065-03 MIA	05/03
49225	Hughes Cove East Obstruction Daybeacon	DBN DMGD	11465	N/A	24/98
49245	Entrada Channel Daybeacon 3	DBN DEST	11465	340-04 MIA	29/04
49295	Coral Gables Waterway Daybeacon 3	DBD DMGD/DBD DEST	11465	NA	13/06
49310	Coral Gables Waterway Daybeacon 6	DBD DEST	11465	NA	13/06
49340	Gables Estates Light 2	DBD DEST	11465	NA	17/06
49345	Gables Estates Daybeacon 2A	DBD DEST	11465	NA	17/06
49350	Gables Estates Daybeacon 3	DBD DEST	11465	NA	17/06
49360	Gables Estates Daybeacon 5	DBD DEST	11465	NA	17/06
49440	Matheson Hammock South Channel Daybeacon 1	DBD DMGD	11465	NA	49/05
49445	Matheson Hammock South Channel Range Front Light	LT EXT	11465	NA	49/05
49450	Matheson Hammock South Channel Range Rear Light	LT EXT	11465	NA	17/06
49455	Matheson Hammock South Channel Light 2	LT EXT	11465	NA	49/05
49495	Matheson Hammock South Channel Daybeacon 11	DBD DMGD	11465	NA	17/06
49575	Deering Bay Channel Light 2	LT EXT/DBD DEST	11465	N/A	15/04
49580	Deering Bay Channel Daybeacon 3	DBD DMGD	11465	NA	10/06
49585	Deering Bay Channel Daybeacon 4	DBD DEST	11465	NA	10/06
49635	Deering Bay Channel Daybeacon 15	DBD DEST	11465	445-05 MIA	35/05
49677.5	Boca Chita Channel Buoy 2	LT EXT	11465	132-06 MIA	10/06
49735	Black Point Channel Daybeacon 1	DBN DEST	11464	560-05 MIA	41/05
49740	Black Point Channel Light 2	LT EXT	11464	103-06 MIA	08/06
49785	Black Point Channel Daybeacon 11	DBN DEST	11464	295-06 MIA	24/06
49845	Black Point Channel Daybeacon 25	DBD DEST	11464	449-05 MIA	35/05
49865	Convoy Point Light 1	LT IMCH/DBN DEST	11467	462-05 MIA	41/03
49870	Convoy Point Light 2	LT IMCH	11467	648-04 MIA	41/03
49955	Turkey Point Channel Light 2	LT EXT/DBD DEST	11464	182-06 MIA	15/06
49955	Turkey Point Channel Light 2	LT EXT/DBN DEST	11464	182-06 MIA	35/05
49975	Turkey Point Channel Buoy 4A	MISSING	11464	461-05 MIA	38/05
50160	Grayvik Daybeacon 1	DBN IMCH	11451	N/A	28/05
50170	Grayvik Daybeacon 3	DBN IMCH/FADED	11451	NA	17/06
50175	Grayvik Daybeacon 4	DBN DEST	11451	NA	17/06
50295	The Moorings Daybeacon 2	DBN DEST	11451	NA	19/06
50300	The Moorings Daybeacon 3	DBD DEST	11451	NA	19/06
50305	The Moorings Daybeacon 4	DBD DEST	11451		19/06
50310	Manatee Bay Daybeacon 2	DBN DEST	11464	NA	19/06
50315	Manatee Bay Daybeacon 3	DBN DEST	11464	NA	19/06
50320	Manatee Bay Daybeacon 4	DBN DEST	11464	NA	19/06
50325	Manatee Bay Daybeacon 5	DBD DEST	11464	NA	13/06
50505.05	Hammer Point Harbor Obstruction Daybeacon C	MISSING	11463	NA	09/06
50505.06	Hammer Point Harbor Obstruction Daybeacon D	MISSING	11463	NA	09/06
50506.02	Hammer Point Harbor Obstruction Daybeacon J	DBN DMGD	11463	NA	09/06
50506.08	Hammer Point Harbor Obstruction Daybeacon P	MISSING	11463	N/A	09/06
50506.09	Hammer Point Harbor Obstruction Daybeacon Q	MISSING	11463	NA	09/06
50905	St. Lucie River (North Fork) Daybeacon 11	DBN IMCH	11428	N/A	04/03
50915	St. Lucie River (North Fork) Daybeacon 13	DBN DMGD/DBD DEST	11428	723-05 MIA	47/05

50955	St. Lucie River (North Fork) Daybeacon 25	DBD DEST	11428	NA	13/06
51975	Buckhead Ridge Canal Light BR	LT IMCH	11428	N/A	53/02
52385	Admiralty Yacht Club Daybeacon 8	DBN IMCH	11428	1716-04 STP	43/04
52420	Indian Creek Daybeacon 1	DBN IMCH	11428	1717-04 STP	43/04
52435	Indian Creek Daybeacon 4	DBN IMCH	11428	N/A	39/04
52440	Indian Creek Daybeacon 5	DBN IMCH	11428	N/A	39/04
52445	Indian Creek Daybeacon 6	DBN IMCH	11428	N/A	39/04
52450	Indian Creek Daybeacon 7	DBN IMCH	11428	1718-04 STP	39/04
52455	Indian Creek Daybeacon 8	DBN IMCH	11428	N/A	39/04
52460	Indian Creek Daybeacon 9	DBN IMCH	11428	N/A	39/04
52465	Indian Creek Daybeacon 10	DBN IMCH	11428	N/A	39/04
52655	Marinatown Daybeacon 1	DBD DEST	11428	0558-06 STP	13/06
52660	Marinatown Daybeacon 2	DBN DEST	11428	0559-06 STP	42/04
52675	Marinatown Daybeacon 5	DBN IMCH	11428	0560-06 STP	39/04
52685	Marinatown Daybeacon 7	DBN IMCH	11428	N/A	39/04
52695	Marinatown Daybeacon 9	DBD DEST	11428	0561-06 STP	13/06
52700	Marinatown Daybeacon 10	DBN IMCH	11428	N/A	39/04
52705	Marinatown Daybeacon 11	DBD DEST	11428	0562-06 STP	13/06
52715	Marinatown Daybeacon 13	DBN DEST	11428	0563-06 STP	18/06
52720	Marinatown Daybeacon 14	DBD DEST	11428	0565-06 STP	18/06
52725	Marinatown Daybeacon 15	DBN IMCH/DBD DEST	11428	N/A	39/04
52740	Marinatown Daybeacon 18	DBN IMCH/NUM MSNG/DAMGD	11428	0567-06 STP	18/06
52745	Marinatown Daybeacon 19	DBN IMCH/DBD DEST	11428	0564-06 STP	39/04
52755	Marinatown Daybeacon 21	DBN DEST	11427	N/A	39/04
52765	Marinatown Daybeacon 23	DBD DEST	11428	0568-06 STP	13/06
52775	Marinatown Daybeacon 25	DBN DEST	11428	0566-06 STP	39/04
52821	Caloosa Isle Marina Daybeacon 1	DBN DEST	11427	NA	14/06
53020	Cape Coral Rim Channel Daybeacon 5	DBN IMCH	11427	N/A	24/04
53060	Cape Coral Rim Channel Daybeacon 19	DBN DEST	11427	1018-05 STP	25/05
53230	Cape Coral Rim Channel Daybeacon 77	DBD DEST	11427	1880-05 STP	51/05
53295	Moody Canal Daybeacon 2	DBD DMGD	11427	0544-06 STP	18/06
53435	Plato Canal Daybeacon 5	DBN IMCH/DBD DEST	11427	N/A	39/04
53515	McGregor Isles Daybeacon 5	MISSING	11427	0569-06 STP	18/06
53565	Harney Point Rim Channel Daybeacon 8	DBN DEST	11427	N/A	27/04
53590	Harney Point Rim Channel Daybeacon 14	DBD DMGD	11427	NA	14/06
53740	Landings Marina Daybeacon 3	DBN DEST	11428	0557-06 STP	18/06
53770	Bikini Basin Entrance Channel Daybeacon 1	DBD DEST	11427	NA	14/06
54135	Redfish Point Rim Channel Light 20	LT EXT	11427	NA	14/06
54195	Peppertree Pointe E Obstruction Daybeacon	DBD DMGD	11427	0926-06 STP	27/06
54210	Peppertree Pointe Daybeacon 3	DBD DEST	11427	0925-06 STP	14/06
54220	Peppertree Pointe Daybeacon 5	DBD DEST	11427	0924-06 STP	14/06
54225	Peppertree Pointe Daybeacon 6	DBD DMGD	11427	0923-06 STP	27/06
54230	Peppertree Pointe Daybeacon 7	DBD DMGD	11427	0922-06 STP	27/06
54235	Peppertree Pointe Daybeacon 8	DBD DMGD	11427	0921-06 STP	27/06
54240	Peppertree Pointe Daybeacon 9	DBD DMGD	11427	0920-06 STP	27/06
54298	Van Riper Channel Daybeacon 10	DBN DEST	11427	NA	14/06
54298.5	Van Riper Channel Daybeacon 12	DBN DEST	11427	NA	14/06
54560	Saint Charles Harbour Daybeacon 15	DBD DMGD	11427	0939-06 STP	27/06
54590	Saint Charles Harbour Daybeacon 21	DBD DMGD	11427	0937-06 STP	27/06
54640	Cape Coral Southwest Channel Daybeacon 1	DBN DEST	11427	NA	36/06
54690	Cape Coral Southwest Channel Daybeacon 15	DBD DEST	11427	0555-06 STP	51/05
54730	Shell Point Village Daybeacon 5	DBN IMCH	11427	N/A	28/05

54930	Manatee Bay Property Channel Daybeacon 1	DBN IMCH/STRUCT DEFAC	11427	0940-06 STP	27/06
55035	Matlacha Pass Daybeacon 30	DBD DEST	11426	1030-06 STP	29/06
55315	Paradise Canal Daybeacon 2	DBD DEST	11427	0929-06 STP	14/06
55320	Paradise Canal Daybeacon 3	DBD DEST	11427	0930-06 STP	14/06
55325	Paradise Canal Daybeacon 4	DBD DEST	11427	0931-06 STP	14/06
55815	South Seas Plantation Daybeacon 8	DBD DEST	11427	0935-06 STP	27/06
55880	South Seas Plantation Daybeacon 21	DBD DEST	11427	0936-06 STP	10/06
56220	Useppa Island Club Channel Daybeacon 11	DBN DEST	11426	N/A	45/04
56225	Useppa Island Club Channel Daybeacon 12	DBN DMGD	11426	N/A	45/04
56230	Wilson Cut Channel Daybeacon 1	TRUB	11427	N/A	43/04
56235	Wilson Cut Channel Daybeacon 2	TRUB	11427	N/A	43/04
56245	Wilson Cut Channel Daybeacon 4	TRUB	11427	N/A	43/04
56250	Wilson Cut Channel Daybeacon 5	TRUB	11427	N/A	43/04
56255	Wilson Cut Channel Daybeacon 6	DBN IMCH	11427	N/A	43/04
56265	Wilson Cut Channel Daybeacon 8	TRUB	11427	N/A	43/04
56290	Wilson Cut Channel Daybeacon 13	TRUB	11427	N/A	43/04
56310	Wilson Cut Channel Daybeacon 17	DBN IMCH	11427	N/A	43/04
56778	Placida Pier Northeast Obstruction Light	LT EXT	11425	990-02 STP	33/02
56778.5	Placida Pier Southeast Obstruction Light	LT EXT	11425	990-02 STP	33/02
57295	Daughtrey Landing Daybeacon 3	DBN DEST	11425	724-06 STP	21/05
57358.3	Gottfried Creek Daybeacon 22	DBN DEST	11425	0968-06 STP	17/04
57359.7	Englewood Channel Daybeacon 12	DBN IMCH	11425	N/A	21/03
57370	Bayview Channel Daybeacon 1	DBN IMCH	11425	0959-06 STP	18/05
57375	Bayview Channel Daybeacon 2	DBN DEST	11425	0958-06 STP	17/04
57380	Bayview Channel Daybeacon 3	DBN DEST	11425	0957-06 STP	18/04
57385	Bayview Channel Daybeacon 4	DBN DMGD	11425	0956-06 STP	18/04
57390	Bayview Channel Daybeacon 5	DBN DEST	11425	0955-06 STP	18/04
57395	Bayview Channel Daybeacon 6	DBN IMCH	11425	0954-06 STP	17/04
57400	Bayview Channel Daybeacon 7	DBN DMGD	11425	0953-06 STP	18/04
57405	Bayview Channel Daybeacon 8	DBN DMGD	11425	0952-06 STP	18/04
57410	Bayview Channel Daybeacon 9	DBN DMGD	11425	0951-06 STP	18/04
57415	Bayview Channel Daybeacon 10	DBN DMGD	11425	0950-06 STP	18/04
57440	Indian Mound Pk Daybeacon 2	DBN DEST	11425	0969-06 STP	28/05
57470	Royal Palm Marina Buoy 1	BUOYDMGD	11425	0943-06 STP	21/04
57475	Royal Palm Marina Buoy 2	MISSING	11425	0949-06 STP	28/05
57480	Royal Palm Marina Buoy 4	MISSING	11425	0948-06 STP	28/05
57485	Royal Palm Marina Buoy 5	MISSING	11425	N/A	28/05
57490	Royal Palm Marina Buoy 6	BUOYDMGD	11425	0945-06 STP	28/05
57495	Royal Palm Marina Buoy 8	MISSING	11425	0944-06 STP	28/05
57500	Royal Palm Marina Buoy 10	ADRIFT	11425	0967-06 STP	28/05
57505	Royal Palm Marina Buoy 11	MISSING	11425	0966-06 STP	28/05
57510	Royal Palm Marina Buoy 12	BUOYDMGD	11425	0965-06 STP	28/05
57515	Royal Palm Marina Buoy 13	BUOYDMGD	11425	0964-06 STP	28/05
57520	Royal Palm Marina Buoy 14	BUOYDMGD	11425	0963-06 STP	28/05
57525	Royal Palm Marina Buoy 15	MISSING	11425	0962-06 STP	28/05
57530	Royal Palm Marina Buoy 16	MISSING	11425	0960-06 STP	28/05
57535	Royal Palm Marina Buoy 18	BUOYDMGD	11425	0961-06 STP	28/05
57570	Lemon Bay Daybeacon 3	DBD DMGD	11425	714-06 STP	22/06
57619.5	Forked Creek Southeast Obstruction Daybeacon	DBN DEST	11425	715-06 STP	28/05
58175	Midnight Pass Lagoon Daybeacon 2	DBN IMCH	11425	N/A	13/05
58205.4	Midnight Pass Daybeacon 15	DBN DEST	11425	1893-05 STP	51/05
58510	Bird Key Channel Daybeacon 2	DBN DEST	11425	831-06 STP	25/06

58530	Sarasota Bay Artificial Reef Daybeacon E	DBN DEST	11425	N/A	10/04
58540	Tony Saprito Fishing Pier South Light	LT EXT	11425	N/A	28/05
58545	Tony Saprito Fishing Pier North Light	LT EXT	11425	N/A	28/05
58610	Sarasota Sail Squad RC Buoy G	BUOYDMGD	11425	0846-05 STP	28/05
58620	Sarasota Sail Squad RC Buoy I	MISSING	11425	0845-05 STP	23/05
58630	Sarasota Sail Squad RC Buoy K	MISSING	11425	N/A	28/05
58645	Bay Isles South Channel Daybeacon 2	DBN IMCH	11425	NA	22/06
58655	Bay Isles South Channel Daybeacon 6	DBN IMCH	11425	0847-05 STP	23/05
58665	Bay Isles South Channel Daybeacon 10	DBN IMCH	11425	NA	22/06
58667.35	Bay Isles Perimeter Channel Daybeacon 12	DBN DMGD	11425	699-06 STP	28/05
58667.6	Bay Isles Perimeter Channel Daybeacon 20	DBN IMCH/STRUCT DEFAC	11425	697-06 STP	22/06
58667.65	Bay Isles Perimeter Channel Daybeacon 22	DBN IMCH/STRUCT DEFAC	11425	698-06	22/06
58680	Longboat Key Moorings Light 1	LT EXT	11425	0576-06 STP	18/06
58685	Longboat Key Moorings Light 2	MISSING	11425	0578 / 706-06	28/05
58690	Longboat Key Moorings Daybeacon 3	DBN DEST	11425	N/A	17/04
58710	Longboat Key Moorings Daybeacon 7	DBD DEST	11425	705-06 STP	22/06
58715	Longboat Key Moorings Daybeacon 8	DBD DEST	11425	704-06 STP	22/06
58725	Longboat Key Moorings Daybeacon 10	DBN IMCH	11425	N/A	18/05
58730	Longboat Key Moorings Daybeacon 11	DBN IMCH	11425	N/A	18/05
58740	Sarasota Bay Obstruction Daybeacon	DBN IMCH	11425	703-06 STP	39/04
58855	Buttonwood Harbor Light 2	LT EXT	11425	0578-06 STP	18/05
58935	Buttonwood Harbor Channel Daybeacon 20	DBD DMGD	11425	693-06 STP	22/06
58945	Buttonwood Harbor Channel Daybeacon 23	DBD DMGD	11425	694-06 STP	18/05
58975	Buttonwood Harbor West Channel Daybeacon 6	DBD DMGD	11425	691 / 728-06	18/05
58990	Dock On The Bay Daybeacon 2	DBN IMCH	11425	N/A	19/05
59030	Longboat Harbor Channel Daybeacon 11	DBD DMGD	11425	696-06 STP	22/06
59145	Longboat Harbor North Marina Daybeacon 6	DBD DEST	11425	729-06 STP	22/06
59195	Cannons Marina DBN 2	DBN IMCH/STRUCT DEFAC	11425	690-06 STP	22/06
59245	Buccaneer Inn Daybeacon 10	DBN DEST	11425	698-06 STP	22/06
59265	Buccaneer Inn Daybeacon 14	DBD DMGD	11425	688-06 STP	22/06
59270	Buccaneer Inn Daybeacon 16	DBD DMGD	11425	687-06 STP	22/06
59280	Buccaneer Inn Daybeacon 18	DBN IMCH	11425	0982-06 STP	21/05
59305	Buccaneer Inn Daybeacon 26	DBN DMGD	11425	0981-06 STP	23/05
59405	Coral Shores Channel Daybeacon 9	DBN DEST	11425	0980-06 STP	17/04
59410	Coral Shores Channel Daybeacon 10	DBD DEST	11425	0547-06 STP	18/06
59420	Coral Shores Channel Daybeacon 12	DBN DEST	11425	0979-06 STP	28/05
59425	Coral Shores Channel Daybeacon 13	DBN IMCH/FADED	11425	0548-06 STP	18/06
59435	Coral Shores Channel Daybeacon 15	DBD DEST	11425	0978-06 STP	18/06
59450	Coral Shores Channel Daybeacon 18	DBN DEST	11425	0977-06 STP	19/06
59465	Coral Shores Channel Daybeacon 21	DBN DEST	11425	0976-06 STP	28/05
59485	Coral Shores Channel Daybeacon 25	DBN IMCH	11425	0546-06 STP	28/05
59510	Coral Shores Channel Daybeacon 30	DBN IMCH	11425	0975-06 STP	27/06
59540	Mt Vernon & Coral Shores Daybeacon 2N	DBN IMCH	11425	N/A	28/05
59585	Bradenton Beach Marina Channel Daybeacon 3	DBN DEST	11425	1107-05 STP	28/05
59650	Cove Sound Moorings Daybeacon 1	DBD DEST	11425	0915-06 STP	27/06
59655	Cove Sound Moorings Daybeacon 2	DBD DEST	11425	0916-06 STP	27/06
59657	Cove Sound Moorings Channel Daybeacon 3	DBD DEST	11425	0941-06 STP	27/06
59657.5	Cove Sound Moorings Channel Daybeacon 4	DBD DEST	11425	0942-06 STP	27/06

59660	Palma Sola Bay Channel Daybeacon 7	DBN IMCH	11425	N/A	18/03
59730	Perico Bayou Channel Daybeacon 12	DBN IMCH	11415	N/A	19/04
59745	Perico Bayou Channel Daybeacon 14A	DBN DMGD	11415	N/A	19/04
59785	San Remo Shore Channel Daybeacon 8	DBN DEST	11425	678-06 STP	22/06
59815	Palma Sola Bay Channel Daybeacon 9	DBN DEST	11425	0283-06 STP	09/06
59860	Palma Sola Bay Channel Daybeacon 18	DBD DEST	11425	0914-06 STP	27/06
59935	Bradenton Beach City Channel Daybeacon 1	DBN DEST	11425	N/A	21/03
59940	Bradenton Beach City Channel Daybeacon 2	DBN IMCH	11425	N/A	22/02
59945	Bradenton Beach City Channel Daybeacon 3	DBN DEST	11425	N/A	21/03
59950	Bradenton Beach City Channel Daybeacon 4	DBN IMCH	11425	N/A	21/03
59955	Bradenton Beach City Channel Daybeacon 5	DBN IMCH	11425	N/A	22/02
59975	Bradenton Beach City Channel Daybeacon 6	DBN IMCH	11425	N/A	21/03
59985	Bradenton Beach City Channel Daybeacon 8	DBN DEST	11425	N/A	21/03
59990	Bradenton Beach City Channel Daybeacon 10	DBN DMGD	11425	N/A	22/02
60010	Kingfish Boat Ramp Daybeacon 2	DBD DMGD	11415	0416-06 STP	14/06
60020	Kingfish Boat Ramp Daybeacon 5	DBN DMGD	11415	0599-06 STP	14/06
60025	Kingfish Boat Ramp Daybeacon 6	DBD DEST	11415	1562-04 834-06	39/04
60030	Kingfish Boat Ramp Daybeacon 7	DBD DMGD	11415	0598-06 STP	14/06
60035	Kingfish Boat Ramp Daybeacon 8	DBD DEST	11425	0412-06 STP	14/06
60045	Kingfish Boat Ramp Daybeacon 10	DBD DEST	11415	0413-06 STP	14/06
60050	Kingfish Boat Ramp Daybeacon 11	DBD DEST	11415	0414-06 STP	14/06
60055	Kingfish Boat Ramp Daybeacon 12	DBN IMCH	11415	N/A	21/03
60065	Perico Harbor Marina Daybeacon 2	Status Unreported	11415	0551-06 STP	18/06
60070	Perico Harbor Marina Daybeacon 3	DBN IMCH	11415	0553-06 STP	18/06
60095	Perico Harbor Marina Daybeacon 8	DBN DEST	11415	0552-06 STP	04/03
60125	Perico Harbor Marina Daybeacon 14	DBD DEST	11415	0554-06 STP	18/06
60190	Anna Maria Channel Daybeacon 1	DBD DMGD	11415	0539-06 STP	17/06
60245	Anna Maria Channel Daybeacon 12	DBN IMCH	11415	0910-06 STP	05/05
60250	Anna Maria Channel Shoal Daybeacon A	DBN IMCH	11415	N/A	05/05
60640	Bayway Isles Channel Daybeacon 5	DBN IMCH	11411	0940-05 STP	13/05
60670	Bayway Isles Channel Daybeacon 14	DBN IMCH	11411	N/A	13/05
60705	Gulfport Yacht Basin Channel Range Rear Light	LT EXT	11411	1228-05 STP	31/05
60755	Pasadena Yacht Club Channel Daybeacon 1	DBD DMGD	11411	NA	13/06
61995	Marker 1 Marina Channel Daybeacon 5	DBN IMCH	11412	0794-05 STP	21/05
62245	Tarpon Cove Daybeacon 20	DBD DMGD	11411	NA	17/06
	Ribaut Island Dock Light A	LT EXT	11507	N/A	04/05
	Ribaut Island Dock Light C	LT EXT	11507	N/A	04/05
	Upper Cooper River Daybeacon 19	DBN DEST	11527	186-05 CHA	23/05

DISCREPANCIES (PRIVATE AIDS) CORRECTED

LLNR	Aid Name	Status	Chart No.	BNM Ref.	LNM St	LNM End
4070	Hunting Island Pier Light	WATCHING PROPERLY	11517	N/A	02/05	36/06
21070	Punta Gorda Marina Daybeacon 2	WATCHING PROPERLY	11426	N/A	02/05	36/06
21085	Punta Gorda Marina Daybeacon 5	WATCHING PROPERLY	11426	N/A	02/05	36/06
21095	Punta Gorda Marina Daybeacon 7	WATCHING PROPERLY	11426	N/A	02/05	36/06
21500.3	Big Sarasota Pass Daybeacon 3	WATCHING PROPERLY	11425	N/A	37/05	36/06
21500.8	Big Sarasota Pass Daybeacon 8	WATCHING PROPERLY	11425	N/A	02/06	36/06
21575	Big Sarasota Pass Daybeacon 17	WATCHING PROPERLY	11425	N/A	51/05	36/06
21701	Anglers Club Reef Daybeacon AC	WATCHING PROPERLY	11425	N/A	22/06	36/06

24125	Culbreath Bayou South Daybeacon 2	WATCHING PROPERLY	11416	N/A	17/04	36/06
26425	Gulf Harbors South Channel Daybeacon 5	WATCHING PROPERLY		N/A	43/05	36/06
26455	Gulf Harbors North Channel Daybeacon 1	WATCHING PROPERLY		N/A	45/05	36/06
26460	Gulf Harbors North Channel Light 2	WATCHING PROPERLY	11411	N/A	45/05	36/06
26470	Gulf Harbors North Channel Daybeacon 4	WATCHING PROPERLY		N/A	10/06	36/06
33150	Lime Tree Bay Channel Lighted Buoy 3	WATCHING PROPERLY	25641	N/A	13/06	36/06
42370	Samsons Park South Channel Daybeacon 1	WATCHING PROPERLY	11472	N/A	28/05	36/06
42375	Samsons Park South Channel Daybeacon 2	WATCHING PROPERLY	11472	N/A	28/05	36/06
42385	Samsons Park South Channel Daybeacon 4	WATCHING PROPERLY	11472	N/A	28/05	36/06
42390	Samsons Park South Channel Daybeacon 5	WATCHING PROPERLY	11472	N/A	28/05	36/06
42395	Samsons Park South Channel Daybeacon 6	WATCHING PROPERLY	11472	N/A	28/05	36/06
42400	Samsons Park North Channel Daybeacon 1	WATCHING PROPERLY	11472	N/A	28/05	36/06
42405	Samsons Park North Channel Daybeacon 2	WATCHING PROPERLY	11472	N/A	28/05	36/06
42410	Samsons Park North Channel Daybeacon 3	WATCHING PROPERLY	11472	N/A	28/05	36/06
42415	Samsons Park North Channel Daybeacon 4	WATCHING PROPERLY	11472	N/A	28/05	36/06
49570	Biscayne Nat Park Boundary Light C	WATCHING PROPERLY	11465	NA	36/06	36/06
57385	Bayview Channel Daybeacon 4	WATCHING PROPERLY	11425		19/03	99/09
57777.1	Higel Park Boat Ramp Daybeacon 1	WATCHING PROPERLY	11425	N/A	49/03	36/06
58485.1	Hudson Bayou Daybeacon 1	WATCHING PROPERLY	11425	N/A	48/04	36/06
58485.2	Hudson Bayou Daybeacon 2	WATCHING PROPERLY	11425	N/A	01/06	36/06

PLATFORM DISCREPANCIES

Name	Status	Position	BNM Ref.	LNM St	LNM End
None					

PLATFORM DISCREPANCIES CORRECTED

Name	Status	Position	BNM Ref.	LNM St	LNM End
None					

SECTION III - TEMPORARY CHANGES and TEMPORARY CHANGES CORRECTED

This section contains temporary changes and corrections to Aids to Navigation for this edition. When charted aids are temporarily relocated for dredging, testing, evaluation, or marking an obstruction, a temporary correction shall be listed in Section IV giving the new position.

TEMPORARY CHANGES

LLNR	Aid Name	Status	Chart No.	BNM Ref.	LNM St	LNM End
625	Cape Canaveral Light	DISCONTINUED	11481	015-06 Jax	03/06	
6220	Brunswick Point Cut Lighted Buoy 26	RELOCATED FOR DREDGING	11489	N/A	12/06	
6225	Brunswick Point Cut Lighted Buoy 27	RELOCATED FOR DREDGING	11489	N/A	12/06	
22295	Egmont Channel Lighted Buoy 11	RELOCATED FOR DREDGING	11415	N/A	33/06	
22300	Egmont Channel Lighted Buoy 12	RELOCATED FOR DREDGING	11415	N/A	33/06	
22500	Tampa Bay Cut B Channel Lighted Buoy 6B	RELOCATED FOR DREDGING	11416	1801-04 STP	44/04	
22515	Port Manatee Channel Lighted Buoy 1	RELOCATED FOR DREDGING	11415	N/A	02/06	
22520	Port Manatee Channel Lighted Buoy 2	RELOCATED FOR DREDGING	11415	016-06 STP	02/06	

22530	Port Manatee Channel Lighted Buoy 3	RELOCATED FOR DREDGING	11415	1977-04 STP	48/04
22550	Port Manatee Channel Light 7	RELOCATED FOR DREDGING	11415	021-06 STP	02/06
30720	Arecibo Light	DISCONTINUED	25668	185-06 GAN	28/06
38167	Nassua Cutoff Buoy 46A	DISCONTINUED FOR DREDGING	11489	226-06	26/06

TEMPORARY CHANGES CORRECTED

LLNR	Aid Name	Status	Chart No.	BNM Ref.	LNM St	LNM End
None						

PLATFORM TEMPORARY CHANGES

Name	Status	Position	BNM Ref.	LNM St	LNM End
None					

PLATFORM TEMPORARY CHANGES CORRECTED

Name	Status	Position	BNM Ref.	LNM St	LNM End
None					

SECTION IV - CHART CORRECTIONS

This section contains corrections to federally and privately maintained Aids to Navigation, as well as NOS corrections.

This section contains corrective actions affecting chart(s). Corrections appear numerically by chart number, and pertain to that chart only. **It is up to the mariner to decide which chart(s) are to be corrected.** The following example explains individual elements of a typical chart correction.

Chart Number	Chart Edition	Edition Date	Last Local Notice to Mariners	Horizontal Datum Reference	Source of Correction	Current Local Notice to Mariners
12327	91st Ed.	19-APR-97	Last LNM: 26/97	NAD 83		27/97
<i>Chart Title:</i> NY-NJ-NEW YORK HARBOR - RARITAN RIVER						
Main Panel 2245 NEW YORK HARBOR					CGD01	
(Temp) ADD	NATIONAL DOCK CHANNEL BUOY 3				at 40-41-09.001N	074-02-48.001W
	Green can					
Corrective Action	Object of Corrective Action				Position	

(Temp) indicates that the chart correction action is temporary in nature. Courses and bearings are given in degrees clockwise from 000 true. Bearings of light sectors are toward the light from seaward. The nominal range of lights is expressed in nautical miles (NM) unless otherwise noted.

11411	16th Ed.	01-JUL-06	Last LNM: 31/06	NAD 83	36/06
<i>Chart Title:</i> Intracoastal Waterway Tampa Bay to Port Richey					
CHART FL - ICW -TAMPA BAY TO PORT RICHEY. Page/Side: N/A					
RELOCATE	Clearwater Marina Channel Light 6			CGD07 from 27-57-59.268N to 27-57-59.414N	082-49-02.254W 082-49-01.642W

11427	34th Ed.	01-MAY-05	Last LNM: 31/06	NAD 83	36/06
<i>ChartTitle: Intracoastal Waterway Fort Myers to Charlotte Harbor and Wiggins Pass</i>					
CHART FL-ICW-FORT MYERS TO CHARLOTTE HARBOR & WIGGINS PASS. Page/Side: N/A					
DELETE	Jug Creek Channel Daybeacon 31 at			CGD07 26-42-04.860N	062-09-29.840W
DELETE	Old Bridge Park E Channel Daybeacon 11at			CGD07 26-40-32.200N	081-51-32.900W
Main Panel 366 FORT MYERS TO CHARLOTTE HARBOR AND WIGGINS PASS SIDE A - SAN CARLOS BAY. Page/Side: A					
DELETE	Jug Creek Channel Daybeacon 19 at			CGD07 26-41-42.770N	082-09-52.500W
DELETE	Jug Creek Channel Daybeacon 33 at			CGD07 26-42-05.860N	082-09-28.200W
DELETE	Jug Creek Channel Daybeacon 9 at			CGD07 26-41-49.260N	082-10-23.320W
11428	34th Ed.	01-JUL-06	Last LNM: 31/06	NAD 83	36/06
<i>ChartTitle: Okeechobee Waterway St. Lucie Inlet to Fort Myers; Lake Okeechobee</i>					
Extension 305 FORT MYERS EXTENSION. Page/Side: B					
DELETE	Old Bridge Park E Channel Daybeacon 11at			CGD07 26-40-32.200N	081-51-32.900W
11445	30th Ed.	31-MAR-01	Last LNM: 23/06	NAD 83	36/06
<i>ChartTitle: Intracoastal Waterway Bahia Honda Key to Sugarloaf Key</i>					
Main Panel 329 BAHIA HONDA KEY TO SUGARLOAF KEY. Page/Side: N/A					
CHANGE	Newfound Harbor Obstruction Lighted Buoy A, FI W 4s to Newfound Harbor Obstruction Buoy A, can at			CGD07 24-36-54.000N	081-23-26.400W
CHANGE	Newfound Harbor Obstruction Lighted Buoy B, FI W 4s to Newfound Harbor Obstruction Buoy B, can at			CGD07 24-36-51.000N	081-23-34.200W
CHANGE	Newfound Harbor Obstruction Lighted Buoy C, FI W 4s to Newfound Harbor Obstruction Buoy C, can at			CGD07 24-36-51.600N	081-23-42.000W
CHANGE	Newfound Harbor Obstruction Lighted Buoy D, FI W 4s to Newfound Harbor Obstruction Buoy D, can at			CGD07 24-36-52.800N	081-23-29.400W
11505	3rd Ed.	01-AUG-06	Last LNM: 34/06	NAD 83	36/06
<i>ChartTitle: Savannah River Approach</i>					
Main Panel 2900 SAVANNAH RIVER APPROACH. Page/Side: N/A					
ADD	Pilot Boarding Area PT 1 OF 4; Pilot Boarding Area (NOS NW-13109)			NOS 31-57-49.200N	080-40-30.000W
ADD	Pilot Boarding Area PT 2 OF 4; Pilot Boarding Area (NOS NW-13109)			NOS 31-56-54.000N	080-38-24.000W
ADD	Pilot Boarding Area PT 3 OF 4; Pilot Boarding Area (NOS NW-13109)			NOS 31-55-07.800N	080-39-31.800W
ADD	Pilot Boarding Area PT 4 OF 4; Pilot Boarding Area (NOS NW-13109)			NOS 31-56-04.800N	080-41-36.000W
11509	29th Ed.	01-AUG-05	Last LNM: 31/06	NAD 83	36/06
<i>ChartTitle: Tybee Island to Dobby Sound</i>					
Main Panel 254 TYBEE ISLAND TO DOBOY SOUND. Page/Side: N/A					
ADD	Pilot Boarding Area PT 1 OF 3; Pilot Boarding Area (NOS NW-13109)			NOS 31-57-04.000N	080-40-59.100W
ADD	Pilot Boarding Area PT 2 OF 3; Pilot Boarding Area (NOS NW-13109)			NOS 31-56-04.800N	080-41-36.000W
ADD	Pilot Boarding Area PT 3 OF 3; Pilot Boarding Area (NOS NW-13109)			NOS 31-55-47.660N	080-40-59.500W
11512	60th Ed.	01-DEC-04	Last LNM: 31/06	NAD 83	36/06
<i>ChartTitle: Savannah River and Wassaw Sound</i>					
Main Panel 231 SAVANNAH RIVER AND WASSAW SOUND. Page/Side: N/A					
ADD	Pilot Boarding Area PT 1 OF 3; Pilot Boarding Area (NOS NW-13109)			NOS 31-55-50.060N	080-41-04.530W

ADD	Pilot Boarding Area PT 2 OF 3; Pilot Boarding Area (NOS NW-13109)	NOS 31-56-04.800N	080-41-36.000W
ADD	Pilot Boarding Area PT 3 OF 3; Pilot Boarding Area (NOS NW-13109)	NOS 31-56-54.370N	080-41-04.530W

SECTION V - ADVANCE NOTICES

This section contains advance notice of approved projects, changes to aids to navigation, or upcoming temporary changes such as dredging, etc.
Mariners are advised to use caution while transiting these areas.

SUMMARY OF ADVANCED APPROVED PROJECTS

<u>Approved Project(s)</u>	<u>Project Date</u>	<u>Ref. LNM</u>
None		

SOUTH CAROLINA - WINYAH BAY ENTRANCE TO ISLE OF PALMS: Aids to be Changed.

The following change will be made to the aids to navigation system.

Hector Wreck Lighted Bell Buoy WR4 (LLNR 145) will be changed to Lighted Buoy WR 4. The bell will be removed. The aid will display all other published characteristic.

This project will be completed the week of 25 September 2006.

Ref: LNM 31/06 and 35/06

Chart 11531

LNM: 31/06

SOUTH CAROLINA - WINYAH BAY CHANNEL: Aids to be Changed.

The following changes will be made to the aids to navigation system.

WINYAH BAY CHANNEL LIGHTED BUOY 11 (LLNR 1930) will be relocated to position 33-11-51.453N/079-10-38.783W displaying published characteristic.

WINYAH BAY CHANNEL LIGHTED BUOY 12 (LLNR 1935) will be relocated to position 33-11-56.611N/079-10-34.379W displaying published characteristic.

This project will be completed the week of 11 September 2006.

Ref: LNM 31/06 and 35/06

Chart 11532

LNM: 31/06

SOUTH CAROLINA - CHARLESTON HARBOR - HOG ISLAND REACH:

The following change will be made to the aids to navigation system.

HOG ISLAND REACH CHANNEL LIGHTED BUOY 42 (LLNR 2620) will be relocated to position 32-48-15.000N/079-54-50.000W displaying Flashing Red 2.5-s characteristic.

This project will be completed the week of 11 September 2006.

Ref: LNM 33/06 and 35/06

Chart 11524

LNM: 33/06

SOUTH CAROLINA - CHARLESTON HARBOR - COOPER RIVER:

The following changes will be made to the aids to navigation system.

COOPER RIVER LIGHTED BUOY 63 (LLNR 2945) will be discontinued.

COOPER RIVER LIGHTED BUOY 64 (LLNR 2945) will be established in position 32-54-29.000N/079-56-22.000W displaying Flashing Red 2.5-s characteristic.

This project will be completed the week of 11 September 2006.

Ref: LNM 33/06 and 35/06

Chart 11524

LNM: 33/06

SECTION VI - PROPOSED CHANGES

Periodically, the Coast Guard evaluates its system of aids to navigation to determine whether the conditions for which the aids to navigation were established have changed. When changes occur, the feasibility of improving, relocating, replacing, or discontinuing aids are considered. This section contains notice(s) of non-approved, proposed projects open for comment. SPECIAL NOTE: Mariners are requested to respond in writing to the District office unless otherwise noted (see banner page for address).

PROPOSED WATERWAY PROJECTS OPEN FOR PUBLIC COMMENT

<u>Proposed Project(s)</u>	<u>Closing</u>	<u>Docket No.</u>	<u>Ref. LNM</u>
None			

SECTION VII - GENERAL

This section contains information of general concern to the Mariners. Mariners are advised to use caution while transiting these areas.

WEST INDIES-PUERTO RICO-ISLA de VIEQUES-NORTH/EAST/SOUTH COAST: Unexploded Ordnance Disposal Operations.

Unexploded Ordnance Disposal Operations are being conducted with estimated completion date of 2010. Daily operations will take place from 0600 to 1800 at the north, east, and southern positions of Isla de Vieques. Vessels are cautioned not to enter an area encompassed by the following coordinates: Starting north of Vieques from shore at Point 1 (one) in approximate position 18-08'42N 065-19'W, then north approximately 1NM at Point 2 (two) in approximate position 18-09'N 065-19'W, then east approximately 4NM to Point 3 (three) at approximate position 18-09'N 065-14'54"W, then south approximately 4NM at Point 4 (four) at approximate position 18-06'18"N 065-14'54"W, then west approximately 4NM to Point 5 (five) in approximate position 18-06'18N 065-19'W and end north on shore at approximate position 18-07'30"N 065-19'00W. Vessels are cautioned not to enter above mentioned area during ongoing operations. For further information contact U.S. Navy, Roosevelt roads, Ceiba, PR at (787) 865-4152 ext 460.

Ref: LNM 07/06 through 35/06
Charts: 25663 25664 25667

LNM: 07/06

WEST INDIES-PUERTO RICO-SAN JUAN HARBOR: Dredging Operations.

The U.S. Army Corps of Engineers has advised that maintenance dredging will commence in San Juan Harbor, San Juan, Puerto Rico, on or about September 18, 2006.

This project will be on going twenty-four (24) hours per day, seven (7) days per week until completion on or about November 17, 2006. The dredge will monitor VFH Channel 13 and 16. All mariners are advised to use extreme caution while transit the area.

WEST INDIES-PUERTO RICO-SAN JUAN HARBOR: Dredging Operations.

Chart 25670

LNM: 36/06

BAHAMAS-TONGUE OF THE OCEAN-AUTEC: Aid Changed.

All mariners are advised that AUTEC Site 4 Light 2 (LLNR 80000.97) is extinguished.

Ref: LNM 14/05 through 35/06

LNM: 14/05

SOUTH CAROLINA-WINYAH BAY: Dredging Operations.

Cottrell Contracting Corporation has advised that the dredge LEXINGTON and associated equipment has commenced dredging operations in the vicinity of Winyah Bay Range E between Winyah Bay Channel Lighted Buoy 23 (LLNR 2065) and Winyah Bay Channel Light 28 (LLNR 2095), Georgetown, South Carolina.

All mariners are requested to stay clear of the dredge, pipeline, barge, derricks, and operating wires about the dredge. All operators should be aware that the dredge and pontoon lines are held in place by cables, which are attached to the anchors some distance from the dredge and pontoons. Buoys are attached to the anchors so that they may be moved as the dredge moves. Submerged lines should be avoided. Mariners are requested to exercise extreme caution when approaching, passing, and leaving the dredge plant. The dredge LEXINGTON will monitor VFH Channel 13 and 16.

This project will be ongoing twenty-four (24) hours per day, seven (7) days per week until October 1, 2006.

Chart 11532

LNM: 36/06

SOUTH CAROLINA-COOPER RIVER-DRUM ISLAND: Submerged Hazards.

U.S. Coast Guard Sector Charleston, SC has advised that possible submerged hazards/demolition debris in Cooper River for duration of Grace and Pearman bridge demolition.

Boaters are advised to stay in the main channel when transiting under the new Ravenel Bridge on the Cooper River. For complete text and chartlet of MSI Bulletin see enclosure number (7).

Ref: LNM 20/06 through 34/06

Chart 11524

LNM: 20/06

SOUTH CAROLINA-CHARLESTON-COOPER RIVER: Temporary Safety Zone.

The Coast Guard is establishing a temporary safety zone on the navigable waters of Hog Island Reach on the Cooper River, for the demolition and recovery operations of the Grace Memorial and Silas Pearmen Bridges. This rule prohibits entry, anchoring, mooring, or transiting within the temporary safety zone without the permission of the Captain of the Port Charleston or his designated representative. This regulation is necessary to protect life and property on the navigable waters of the Cooper River from the danger associated with the demolition and recovery operations of these bridges. This rule is effective until 8:01 a.m. on December 31, 2006.

For further information contact LTJG Calvin Summers, Sector Charleston Office of Waterways Management at (843) 724-7647.

Ref: LNM 07/06 through 34/06 Docket Number (COTP Charleston 06-003)

Chart 11524

LNM: 07/06

GEORGIA - INTRACOASTAL WATERWAY - ST SIMONS SOUND TO TOLOMATO RIVER - CUMBERLAND SOUND: Notice of Interest to Mariners.

Due to the limited commercial use of the Atlantic Intracoastal Waterway between Port Royal Sound, South Carolina (Mile 552) and Cumberland Sound, Georgia (Mile 713), the Savannah District will not receive funds to maintain the waterway to the authorized depths. The District will monitor the conditions of the waterway and publish quarterly condition reports.

Mariners are to use extreme caution when transiting the waterway until further notice.

Ref: LNM 48/03 through 35/06

Chart 11489

LNM: 48/03

FLORIDA-SEACOAST-CAPE CANAVERAL TO BETHEL SHOALS: Shuttle Launch/Landing. (Updated)

The National Aeronautic and Space Administration (NASA) has requested that all mariners unless otherwise authorized by NASA please refrain from RADAR tracking of the STS-115 launch and landing. STS-115 is scheduled for a nominal eleven (11) day mission. The possible launch period is between September 6, 2006 to September 8, 2006. The possible landing period is September 17, 2006 with on-time launch of 9/06/2006 to September 19, 2006.

For further information please contact Ms. Cathy Sham at (281) 483-0124.

FLORIDA-SEACOAST-CAPE CANAVERAL TO BETHEL SHOALS: Shuttle Launch/Landing. (Updated)

Ref: LNM 34/06 through 35/06

Chart 11476

LNM: 36/06

FLORIDA-SEACOAST-BETHEL SHOALS TO JUPITER INLET: Offshore Testing of Semi-Submersible Vehicle.

Lockheed Martin - Perry Technologies in conjunction with the United States Navy will be conducting offshore testing of an unmanned, remotely piloted, semi-submersible vehicle 1 to 10 miles offshore from Jupiter Inlet to Boynton Beach Inlet. Operations will take place beginning 5-31-2006 and ending 10-15-2006. The Lockheed Martin - Perry Technologies RHIB vessel will support the semi-submersible and will be in constant radio contact with the operations crew and equipped with a remote kill switch. The C/V Wes Bordelon and Sea Tow will also be utilized in the offshore testing along with the Lockheed Martin-Perry Technologies RHIB support vessel and all will be monitoring channel 16. Boaters are asked to stay clear.

Ref: LNM 20/06 through 35/06

Chart 11474

LNM: 20/06

FLORIDA-SOMBERO KEY TO SAND KEY- WHALE HARBOR: Hazard to Navigation.

The Coast Guard has received a report of a metal pile sticking out of the water approximately one and a half feet between Whale Harbor Daybeacon 3 (LLNR 12700) and Whale Harbor Daybeacon 4 (LLNR 12705).

All mariners are advised to transit the area with caution.

Ref: LNM 30/05 through 35/06

Chart 11442

LNM: 30/05

FLORIDA-LOSTMAN RIVER TO WIGGINS PASS-COLLIER BAY: Hazard to Navigation. (Updated)

The U.S.Coast Guard has received a report of a ¼ NM long dredge pipe partially submerged in the vicinity of Capri Pass Daybeacon 12 (LLNR 16995). All mariners are advised to exercise caution while transiting the area.

Ref: LNM 20/05 through 35/06

Chart 11430

LNM: 20/05

FLORIDA-CHARLOTTE HARBOR TO TAMPA BAY-NEW PASS ENTRANCE CHANNEL: Uncharted Buoys.

The New Pass Entrance Channel is subject to continual change. Buoys are not charted because they are frequently shifted in position. The controlling depth was 8 feet for a width of 100 feet from LIGHT 7 (LLNR 21620) to the S R Bridge; thence 6 feet for a width of 100 feet to the Intracoastal Waterway and 8 feet to the basin; 7 feet in the basin except for shoaling to 3 ½ feet in the southeast section of the basin.

BUOYS NOT CHARTED IN NEW PASS ENTRANCE CHANNEL

- Buoy 1 (LLNR 21590), - Buoy 2 (LLNR 21595), - Buoy 3A (LLNR 21600), - Buoy 5 (LLNR 21605) and - Buoy 5A (LLNR 21610)

Mariners are advised to use caution while transiting this area and view Local Notice to Mariners editions for shoaling information and repositioning of aids to navigation.

Ref: LNM 52/04 through 35/06

Chart 11425

LNM: 52/04

FLORIDA- TAMPA BAY ENTRANCE- TAMPA BAY: Marine Advisory.

In order to minimize the risk of collision with deep draft vessels and improve the safe transit of shallow draft vessels within the Tampa Bay and its approaches, the Coast Guard Captain of Port Tampa, Florida issues the following advisory: A NOAA survey number H-11344 conducted in July, 2004 reported that a water depth of 10 feet extends approximately 500 feet outward from both sides of the main ship channel in the waters west of the Sunshine Skyway Bridge adjacent to Egmont Channel, Mullet Key Channel, and Tampa Bay Cut "A" except in the vicinity of the Sunshine Skyway Bridge where existing security zones prohibit navigation closer than 100 feet around all bridge supports, dolphins, and rocky outcroppings from piers 88 to 135. Continuing east of the Sunshine Skyway Bridge, the advisory includes the waters adjacent to Point Pinellas Channel, Tampa Bay Cuts -A-, "B", "C", "D", "E", "F", "G", "J", "J-2", West of "K" Cut, Gadsen Point Cut, and Hillsborough Bay Cuts "A", and "C". All vessels drafting less than 10 feet may consider utilizing waters that have been identified by the 2004 NOAA survey parallel to, and within 500 feet of, the main ship channel when identifying the safest navigational course for transiting Tampa Bay and its approaches.

Ref: LNM 14/05 through 35/06

Chart 11415

LNM: 14/05

FLORIDA-ANCLOTE KEYS TO CRYSTAL RIVER: Hazard to Navigation.

The Hernando County Waterways Maintenance Department has advised that submerged rock has been reported in the Bonita Canal in the Hernando Beach area. The rock is not in the main channel but still considered a safety hazard.

The approximate position is 28-29-50.839N 082-39-29.280W. This area after permitted will be marked with a DANGER ROCK sign.

FLORIDA-ANCLOTE KEYS TO CRYSTAL RIVER: Hazard to Navigation.

Ref: LNM 06/06 through 35/06
Chart 11409

LNM: 06/06

FLORIDA-CHARLOTTE HARBOR TO TAMPA BAY-MYAKKA RIVER: Lock Closure.

The South Gulf Cove Lock located off the Myakka River, Charlotte County, Florida will be closing on September 13, 2006 for a refurbishment and automation project. No vessel traffic will be permitted to enter or exit the South Cove waterway system during this time. The completion date for this project will be on or about October 13, 2006.

For further information please contact Ms. Tara L. Musselman at (941) 575-3656.

Ref: LNM 35/06
Chart 11425

LNM: 35/06

FLORIDA - CRYSTAL RIVER TO HORSESHOE POINT - CROSS FLORIDA BARGE CANAL - OKLAWAHA RIVER: Lock Closure.

Mariners are hereby notified that the H.H.Buckman Lock is closed indefinitely at the direction of the Florida Department of Environmental Protection. Construction operations and re-engineering work on the damaged manatee protection grates has commenced. This operation will continue until further notice. All inquires concerning this closure should be directed to: Ms. Bonita Pintard at (352) 236-7143.

Ref: LNM 48/03 through 35/06
Chart 11408

LNM: 48/03

FLORIDA - INTRACOASTAL WATERWAY - CHARLOTTE HARBOR TO TAMPA BAY: Hazard to Navigation. (Updated)

The Coast Guard has received a report of a possible submerged object in the vicinity of the center span of the Ringling Bridge.

On February 10, 2006 three (3) temporary buoys were deployed south of the new Ringling Causeway Bridge, in Sarasota Bay to mark submerged rocks that could pose a hazard to navigation during high tides. All three (3) buoys are east of the Gulf Intracoastal Waterway outside of the marked channel. The buoys are a standard, white, cylindrical information buoy. The buoys are anchored in place either on or in close proximity to the submerged rocks.

The buoys are one (1) foot in diameter and approximately 5 1/2 feet tall, marked with a orange diamond shape and worded HAZARD. The approximate positions of the buoys are:

1. 27-19-52.620N 082-33-24.060W
2. 27-19-52.920N 082-33-23.220W
3. 27-19-53.940N 082-33-22.080W

It is requested that all mariners exercise caution when transiting this area.

Ref: LNM 08/06 through 35/06
Chart 11425

LNM: 06/06

FLORIDA-INTRACOASTAL WATERWAY-ST LUCIE INLET TO FORT MYERS AND LAKE OKEECHOBEE (ROUTE 2): Hurricane Wilma Debris Removal.

Mariners are hereby notified that the Okeechobee Waterway Route #2 remains closed until further notice, from Clewiston (S-310) to Port Mayaca (S-308) due to debris from Hurricane Wilma.

For complete text of this Notice to Navigation Interest concerning this lock closure see LNM 32/06 enclosure number 10.

Ref: LNM 32/06 and 35/06
Chart 11428

LNM: 32/06

SECTION VIII - LIGHT LIST CORRECTIONS

An Asterisk *, indicates the column in which a correction has been made to new information

(1) No.	(2) Name and Location	(3) Position	(4) Characteristic	(5) Height	(6) Range	(7) Structure	(8) Remarks
13886	Newfound Harbor Obstruction Buoy A	24-36-54.000N 081-23-26.000W				White and orange banded worded DANGER CORAL, can.	Private aid. 36/06
	*	*	*				

SECTION VIII - LIGHT LIST CORRECTIONS (Continued)

(1) No.	(2) Name and Location	(3) Position	(4) Characteristic	(5) Height	(6) Range	(7) Structure	(8) Remarks
13887	Newfound Harbor Obstruction Buoy B	24-36-51.000N 081-23-34.000W				White and orange banded worded DANGER CORAL, can.	Private aid. 36/06
	*		*				
13888	Newfound Harbor Obstruction Buoy C	24-36-51.600N 081-23-42.000W				White and orange banded worded DANGER CORAL, can.	Private aid. 36/06
	*		*				
13889	Newfound Harbor Obstruction Buoy D	24-36-52.800N 081-23-29.400W				White and orange banded worded DANGER CORAL, can.	Private aid. 36/06
	*		*				
22395 60290	Mullet Key Channel Lighted Buoy 26	27-36-45.312N 082-40-14.947W	Q R		5		36/06
					*		
22400 60440	Tampa Bay Cut A Channel Lighted Bell Buoy 1A	27-36-57.161N 082-40-01.057W	FI G 2.5s		5		36/06
					*		
22445 60455	Tampa Bay Cut A Channel Lighted Buoy 3A	27-37-39.055N 082-38-30.617W	FI G 2.5s		5	Green with yellow square.	36/06
					*		
22450 60460	Tampa Bay Cut A Channel Lighted Buoy 4A	27-37-34.054N 082-38-28.449W	FI R 2.5s		4	Red with yellow triangle.	36/06
					*		
22530	Port Manatee Channel Lighted Buoy 3	27-39-04.201N 082-35-15.201W	FI G 2.5s		4	Green.	36/06
					*		
22535	Port Manatee Channel Lighted Buoy 4	27-39-00.727N 082-35-17.961W	FI R 2.5s		4	Red.	36/06
					*		
23445	Hillsborough Cut C Channel Lighted Buoy 25	27-52-49.764N 082-26-30.715W	FI G 2.5s		4	Green.	36/06
					*		
23450	Hillsborough Cut C Channel Lighted Buoy 26	27-52-49.176N 082-26-24.664W	FI R 2.5s		4	Red.	36/06
					*		
23485	Hillsborough Cut C Channel Lighted Buoy 28	27-53-50.885N 082-26-18.839W	Q R		4	Red.	36/06
					*		
38168	Amelia Island Danger Shoal Daybeacon 1	30-31-35.590N 081-26-04.530W				NW on pile worded DANGER ROCKS.	Private aid. 36/06
	*						
52530	Old Bridge Park E Channel Daybeacon 11						Remove from list. *
56405.5	Jug Creek Channel Daybeacon 9						Remove from list. *
56440.5	Jug Creek Channel Daybeacon 19						Remove from list. *
56475.5	Jug Creek Channel Daybeacon 31						Remove from list. *
56480.5	Jug Creek Channel Daybeacon 33						Remove from list. *
60290 22395	Mullet Key Channel Lighted Buoy 26	27-36-45.312N 082-40-14.947W	Q R		5	Red with yellow square.	36/06
					*		
60440 22400	Tampa Bay Cut A Channel Lighted Bell Buoy 1A	27-36-57.161N 082-40-01.057W	FI G 2.5s		5	Green with yellow square.	36/06
					*		

SECTION VIII - LIGHT LIST CORRECTIONS (Continued)

(1) No.	(2) Name and Location	(3) Position	(4) Characteristic	(5) Height	(6) Range	(7) Structure	(8) Remarks
60455 22445	Tampa Bay Cut A Channel Lighted Buoy 3A	27-37-39.055N 082-38-30.617W	FI G 2.5s		5	Green with yellow square.	36/06
					*		
60460 22450	Tampa Bay Cut A Channel Lighted Buoy 4A	27-37-34.054N 082-38-28.449W	FI R 2.5s		4	Red with yellow triangle.	36/06
					*		

ENCLOSURES

1. Special Warning Number 123, Somali.

Due to continuing conditions of armed conflict and lawlessness in Somali and waters off its coast, mariners are advised to avoid the Port of Mogadishu and remain at least 200 nautical miles distant from the Somali Coast.

2. Operation On Guard

On Guard Announcement

3. Dredging and Marine Construction

Dredging and Marine Construction List

4. Shoaling and Hazardous Situations

Shoaling and Hazardous Situation List

5. Bridge Construction and Repair/Drawbridge Status

Weekly Updated Status

LNM: 42/05

6. Safe Boating Programs

Auxiliary Programs and Classes

7. Marine Safety Information Bulletin

Possible Submerged Hazards/Demolition Debris in Cooper River.

Chart 11524

LNM: 20/06

8. U.S. Coast Pilot Number 5

Change Number 9

LNM: 36/06

D.W. Kunkel
Rear Admiral, U.S. Coast Guard
Commander, Seventh Coast Guard District

SUBJ: REBROADCAST OF SPECIAL WARNING 123.
UNCLASSIFIED//
MSGID/GENADMIN/NGA NAVSAFETY BETHESDA MD//
RMKS/

SPECIAL WARNING NUMBER 123. SOMALI.

1. DUE TO CONTINUING CONDITIONS OF ARMED CONFLICT AND LAWLESSNESS IN SOMALIA AND WATERS OFF ITS COAST, MARINERS ARE ADVISED TO AVOID THE PORT OF MUQDISHO (MOGADISHU) AND TO REMAIN AT LEAST 200 NAUTICAL MILES DISTANT FROM THE SOMALI COAST. THE U.S. GOVERNMENT DOES NOT HAVE AN EMBASSY IN SOMALIA AND CANNOT PROVIDE SERVICES TO US CITIZENS.
2. RECENT VESSEL HIJACKINGS OFF THE EAST COAST OF SOMALIA DEMONSTRATE THAT PIRATES ARE ABLE TO CONDUCT AT SEA HIJACKINGS FROM AS FAR SOUTH AS KISMAAYO (CHISIMAYU) (00-22S), THOUGH VESSELS ARE ADVISED TO TRANSIT NO CLOSER THAN 02-00S, TO AS FAR NORTH AS EYL (08-00N), AND OUT TO A DISTANCE OF 170 MILES. THE FIRST KNOWN ATTEMPT TO HIJACK A CRUISE VESSEL OCCURRED IN NOVEMBER 2005. ALL MERCHANT VESSELS TRANSITING THE COAST OF SOMALIA, NO MATTER HOW FAR OFFSHORE, SHOULD INCREASE ANTI-PIRACY PRECAUTIONS AND MAINTAIN A HEIGHTENED STATE OF VIGILANCE. PIRATES ARE REPORTED TO HAVE USED PREVIOUSLY HIJACKED SHIPS AS BASES FOR FURTHER ATTACKS.
3. ANOTHER REPORTED PIRATE TACTIC HAS BEEN TO ISSUE A FALSE DISTRESS CALL TO LURE A SHIP CLOSE INSHORE. THEREFORE, CAUTION SHOULD BE TAKEN WHEN RESPONDING TO DISTRESS CALLS KEEPING IN MIND IT MAY BE TAKEN WHEN RESPONDING TO DISTRESS CALLS KEEPING IN MIND IT MAY BE A TACTIC TO LURE A VESSEL INTO A TRAP.
4. VICTIMIZED VESSELS HAVE REPORTED TWO TO THREE (2-3) SPEEDBOATS MEASURING SIX TO NINE METERS (6-9M) IN LENGTH. EACH VESSEL HAS A CREW OF THREE TO SIX (3-6) ARMED MEN WITH AK-47S AND SHOULDER LAUNCHED ROCKETS, WHICH ARE OPENING FIRE ON VESSELS IN BROAD DAYLIGHT IN ORDER TO INTIMIDATE THEM INTO STOPPING.
5. TO DATE, VESSELS THAT INCREASE SPEED AND TAKE EVASIVE MANEUVERS AVOID BOARDING WHILE THOSE THAT SLOW DOWN ARE BOARDED, TAKEN TO THE SOMALI COASTLINE, AND RELEASED AFTER SUCCESSFUL RANSOM PAYMENT, OFTEN AFTER PROTRACTED NEGOTIATIONS OF AS MUCH AS 11 WEEKS.
6. CANCEL SPECIAL WARNING NUMBER 111.//

#5827

BT

NNNN

OPERATION "ON GUARD"

U. S. Coast Guard Marine Safety Office Miami announces Operation "ON GUARD". This operation is designed to employ Coast Guard - active duty, reserve and auxiliary, Federal Bureau of Investigation, US Customs Service, US Immigration and Naturalization Service and the Florida Department of Law Enforcement personnel in response to suspected terrorist activity at the waterfront facilities of the United States. South Florida is extremely vulnerable because it is the terminus of illegal alien and narcotics smuggling routes from the Bahamas, the Caribbean and South America. These routes are well established and are readily available for use by terrorist organizations. An urgent need existed to make the American Public equal partners in the fight on terrorism. Operation "ON GUARD" creates an effective deterrent measure that employs the eyes and ears of the marine industry and the boating public, people that know every inch of the coastline because it is where they work and play. Potential terrorists are put on notice that their activities will be seen and reported.

Operation "ON GUARD" takes a two pronged approach consisting of face to face visits by Coast Guard, FBI, USCS, INS and FDLE personnel combined with a coordinated joint agency media campaign to reach Marina Operators, Marine Dealers, Bridge Tenders, Commercial Fishermen, and the Boating Public. This operation relies on Coast Guard Auxiliary programs already in place like the "Clean Marina" program, Vessel Safety Checks, Marine Dealer Visits and the Commercial Fishing Vessel Safety Program to reach their normal customers, the waterfront users. The public is provided with the toll free number (1.800.424.8802) for reporting suspected terrorist activity to the National Response Center and the 1.800.BE ALERT number for US Customs along with a list of reporting criteria.

Report:

- Suspicious persons conducting unusual activities
- Individuals establishing businesses or roadside food stands in proximity to marina or bridge
- Unknown persons photographing or creating diagrams
- Unknown or suspicious persons loitering for extended periods of time
- Unknown or suspicious persons renting watercraft
- Suspicious vendors attempting to sell/deliver merchandise or drop off packages

For additional information contact: LCDR Armin Cate (305) 535-8735

D. DREDGING AND MARINE CONSTRUCTION OPERATIONS

Location	Type of Work	EST Comp Date	Dredge	Ref LNM
Bahamas	Above Water Cable Ops	UNK	UNKNOWN	10/03
WI-PR-San Juan Harbor	Dredging Ops	NOV06	ACOE	36/06
WI-PR-Ponce Harbor	Dredging Ops	SEP06	WEEKS #12	25/05-11/06
SC-Winyah Bay	Dredging Ops	SEP06	LEXINGTON	29/06
SC-Charleston Harbor-Cooper River	Marine Construction Ops	UNK	Tug LAURA	38/02
SC-Charleston Harbor-Cooper River	Dredging Ops	OCT06	HAMPTON ROADS	35/06
SC-Cooper River	Drilling Ops	UNK	Spud Barges	04/02
SC-Hilton Head	Beach Renourishment	DEC06	ILLINOIS	35/96
GA-Cumberland Sound	Dredging Ops	UNK	UNKNOWN	26/03
FL-Kings Bay	Dredging Ops	SEP06	ACOE	21/06
FL-Jacksonville Harbor	Dredging Ops	SEP07	ACOE	35/06
FL-Port Canaveral T/B-Ent Channel South Jetty	Dredging Ops	NOV06	BUCKET DREDGE # 551	34/06
FL-Miami River	Dredging Ops	DEC06	BEAN 7	40/04
FL-Miami River/27 TH Avenue-Salinity Dam	Dredging Ops	2006	BARREDOR DEL RIO	20/05
FL-ICW-Nassau Snd-Sawpit Creek	Dredging Ops	OCT06	WILCO	18/06
FL-Tampa Bay Entrance-Egmont Channel	Dredging Ops	OCT06	ATLANTIC/VIRGINIAN	40/05-12/06
FL-Tampa Bay-Sparkman Channel	Dredging Ops	MAR07	Misener Marine Construction Inc	45/05
FL-Tampa Bay-Egmont Channel/Mullet Key	Dredging Ops	NOV06	EAGLE 1	31/06
FL-Charlotte Harbor-Myakka River	Marine Construction	OCT06	Charlotte County	35/06

E. SHOALING AND HAZARDOUS SITUATIONS

Location	Waterway	Significant Information	Chart	Ref LNM
SC	Seacoast	Charleston Harbor Ocean Dredged Material Disposal Site (ODMDS) higher than charted depths, minimum depth may be 18 feet.	11521	09-01
SC	Murrells Inlet	Shoaling continues to be reported between Murrells Inlet Buoy 4 (LLNR 1775)	11534	10-06
SC	Murrells Inlet	Murrells Inlet LB 6 (LLNR 1780) and Murrells Inlet Buoy 7 (LLNR 1795) Ref LNM 37-04	11534	31-06
SC	Little River Inlet	Shoaling has been reported in the vicinity of Murrells Inlet Buoy 25 (LLNR 1850)	11535	29-03
SC	Winyah Bay	A 47 ft tug sank in approx position 33-50.1N 078-32.8W and is marked with a lighted buoy	11535	50-01
SC	Folly River	Shoaling has been reported in position 33-13-00N 079-11-50W in the vicinity of Georgetown Lighthouse (LLNR 20) the depth of the water was reported at 27 feet.	11522	19-04
SC	Folly River	Shoaling has been observed between Folly River Buoy 14A (LLNR 3750.6) and Folly River Buoy 19 (LLNR 3750.7)	11522	19-04
SC	Shem Creek	Shoaling in the vicinity of SHEM CREEK RANGE LIGHT 16 (LLNR 3555)	11524	29-03
SC	Charleston Hbr	SHEM CREEK RANGE FRONT LIGHT (LLNR 3560) is not properly marking the center of the channel and has been changed to a quick flashing green light (QG) and is displaying square green (SG) dayboards.	11524	44-02
SC	Charleston Hbr	Severe shoaling in center of channel datum at depth of 5.5 MLW between Mt. Pleasant Channel DB 1 (LLNR 3510) and Mt. Pleasant Channel DB 2 (LLNR 3515).	11523	31-03
SC	Cooper River	A midstream transfer facility is conducting continued operations in the vicinity of Naval Weapons Station near the TC dock. Operations are outside the marked navigation channel and should not impede navigation.	11524	36-03
SC	Cooper River	Concrete and rock reported at the 40 foot depth on both sides of the navigation channel adjacent to the manmade islands directly under the I-526 Bridge.	11524	49-02
SC	Cooper River	A conveyor extends approx 20 ft into Town Creek beneath Cooper River bridges.	11524	13-02
SC	Stono Inlet	Shoaling to 7 feet at MLLW between Stono Inlet Channel Buoy 3 (LLNR 3710) and Buoy 4 (LLNR 3715).	11522	31-03
SC	Folly River	Obstruction (steel H beam) reported 50-70 yds outside marked channel and outheast of FOLLY RIVER LB 2 (LLNR 3735) at low tide	11522	06-02
SC	Folly River	Shoaling to 5 ft at MLW reported in the Folly River from Folly River LB 2 (LLNR 3735) to Folly River LB 7 (LLNR 3740) and to 5 ft at MLW from Folly River Buoy 18 (LLNR 3755 to Folly River Buoy 19 (LLNR 3760) within the confines of the marked channel.	11522	06-03
SC	Beaufort River	A 10"x10"x10" beam with pilings reported snagged on a private dock between Stono River DBN 57A (LLNR 34800) on the Stono River.	11518	06-02
SC	Beaufort River	Continued shoaling to depths of 6.5 feet in the vicinity from WHITE POINT LT 110 (LLNR 34945) through Dawho River Buoy113 (LLNR 34960)	11518	30-01
SC	Cooper River	Submerged Obstruction reported in the vicinity of the Cooper River Bridge in approximate position 32-48-12.600N 079-55-03.400W	11524	10-01
SC	Cooper River	Shoaling to depths of 8 feet above charted datum reported in the vicinity of Cooper River Range "D" at the Naval Weapons Station.	11524	19-01
SC-ICW	Ashepool Riv	Shoaling has been reported between Fenwick Cut Daybeacon 161A (LLNR 35140.5) And Ashepool River LT 164 (LLNR 35145). Water depth reported 5 feet at low tide.	11518	17-04
SC-ICW	Little River	Little River Swing Bridge is missing a section of the dolphin fendering system.	11534	40-02
SC-ICW	Winyah Bay	Shoaling has been reported along Range E, Entrance Channel to Georgetown, SC	11534	06-06
SC-ICW	Winyah Bay	Shoaling has been reported between Winyah Bay-Charleston Harbor Daybeacon 37 (LLNR 34240) and Winyah Bay-Charleston Harbor Daybeacon 38 (LLNR 34240)	11518	51-03
SC-ICW	Brickyard Creek	A new shoal extends out of channel on green side between Brickyard Creek Daybeacon 209 (LLNR 35325) and Brickyard Creek Daybeacon 211(LLNR 35335). Water depth at low tide is reported at 2.6 feet.	11507	17-04
SC-ICW		Severe reported shoaling between Hell's Gate Daybeacon 89 (LLNR 36279) and Hell's Gate Light 92 (LLNR 36290).	11507	17-06
SC-ICW	Port Royal Sound	Severe shoaling has been reported in various located in the ICW between Port Royal Sound, SC and Fernandina, FL. (See LNM 31/05 for Channel Conditions).		31-05
GA-ICW	Vernon River	Shoaling has been reported in the middle of channel from Raccoon Key LB 78 (LLNR 36265) and Hells gate LT 91 (LLNR 36285)	11507	17-04
GA	St Catherinres Snd	Shoaling reported in vicinity of St Catherines Snd LB 2 (LLNR 5795)	11511	33-06
GA	Darien River	Shoaling has been reported between Darien River Buoy 12 (LLNR 36826.3) and Darien River Buoy 14 (LLNR 36826.4). Water depth reported 5 feet low tide.	11507	06-04
GA	Beaufort River	Shoaling as been observed between Little Mud river LT 190 (LLNR 36865) and Little Mud River (LLNR 36870). Water depth reported 9 feet at low tide.	11510	35-00
GA	Doboy Sound	Shoal 500 yards WNW of DOBOY SOUND LT 8 (LLNR 5945).	11510	35-00
GA	Mackay River	Piling marked by white strobe light is protruding one foot above waterline in center of channel	11510	17-02
GA	Altamaha Sound	Shoal between ALTAMAHA SOUND LT 2 (LLNR 5950) & LT 5 (LLNR 5965)	11508	06-00
GA	Hampton River	Shoaling reported between Hampton River Daybeacon 15 (LLNR 5985) and Hampton River Daybeacon 17 (LLNR 5990).	11508	23-04
GA	ST Andrew Sound	Shoaling reported in vicinity of St Andrew Sound Buoy 2 (LLNR 6410). Depth reported 4 feet.	11508	23-04

GA	Jekyll Creek	Shoaling to a depth of 7 feet at the centerline has been reported throughout Jekyll Creek	11489 31-01
GA ICW	Savannah River	Shoaling reported in the area between Elba Island Cut LT 2 (LLNR 35880) and Elba Island Cut LT 4 (LLNR 35885), Soundings shows the depth between two and four feet, approx 20 yards into the channel between the aids.	11507 01-05
GA ICW	Jekyll Creek	Shoaling has been observed between Jekyll Creek LT 20 (LLNR 37345) and Jekyll Creek LT 20A (LLNR 37346). Water depth reported 5 feet at low tide.	11489 06-04
FL East Coast	Amelia River	Extensive shoaling reported in the vicinity of South Amelia River DBN 34 (LLNR 38100)	11489 34-01
FL East Coast	Amelia Island	An unlit pier extends into the South Amelia River at LIGHT 29 (LLNR 38080) in approx position 30-35-09N 081-27-18W	11489 04-03
FL East Coast	St Johns River	Shoaling has been reported in the channel south of Mt Royal Light 63 (LLNR 8510) to Fort Gates Light 65 (LLNR 8520). Depth reported at low water is 4 feet.	11495 24-06
FL East Coast	Ortega River	Submerged pilings on west bank of upper Ortega River extending out approx 150 ft.	11492 17-02
FL East Coast	St. Augustine	5 foot in diameter unlighted buoy anchored in 27-38-20N 080-13-15W.	11474 04-01
FL East Coast	St Lucie Inlet	St Lucie River (North Fork) DBN 2 (LLNR 50845), previously reported as destroyed, has been marked with a temporary red lighted buoy "2WR" with a Q W flash characteristic in position 27-12-08.940N, 080-15-45.585W, in 10 feet of water. A single concrete pile remains on scene, approximately 3 feet below the surface at low tide.	11428 06-03
FL East Coast	Lake George	Obstructions reported 100 yards west and 100 yds NW of Lake George South End Range Front Light (LLNR 8775).	11495 05-03
FL East Coast	Halifax River	Shoaling to an unknown depth has been reported in the vicinity of Halifax River Daybeacon 68 (LLNR 40470) and Halifax River Daybeacon 70 (LLNR 40480). The shoaling is reported to extend 40 yards from the west bank of the channel.	11485 19-01
FL East Coast	Halifax River	Shoaling to a depth of 3 feet in the vicinity of Halifax River DBN 30 (LLNR 40000) increasing to a depth of 8 feet, 20 yards to the east of the DBN	11485 28-01
FL East Coast	Matanzas Coast	66 F/V sunk in position 29-03-09N 080-52-06W.	11484 43-00
FL East Coast	Matanzas River	Shoaling reported in Mantanzas River, north of Mantanzas bridge on west side of channel approx 20 feet into channel.	11485 09-05
FL East Coast	Matanzas River	Shoaling reported with soundings of 9 feet at low tide trying to close itself in between <u>MATANZAS RIVER LIGHT 1</u> (LLNR 39035) and Matanzas River B 2 (LLNR 39040).	11485 37-03
FL East Coast	Matanzas River	Shoaling constant near Matanzas River B 2 (LLNR 39040), and Tolomato River B 60 (LLNR 38910). Dredging operations continuous.	11485 31-00
FL East Coast	Matanzas River	Shoaling has been reported in the vicinity Matanzas River DBN 3 (LLNR 18090) Reported depths are 9.3 feet approx 300 feet WNW of DBN.	11427 29-01
FL East Coast	Matanzas River	Shoaling has been reported in the vicinity Matanzas River DBN 4A (LLNR 18100) And DBN 4B (LLNR 18105), approx 20 yds into channel	11427 42-01
FL East Coast	Matanzas River	Shoaling has been reported in the vicinity Matanzas River Buoy 81A (LLNR 39535) in approximate position 29-43-05N 081-14-45W. Shoaling to depths of 3 to 4 feet has been reported in the marked channel.	11485 07-01
FL East Coast	Ponce de Leon	Shoaling has been reported in the vicinity of Ponce de Leon Inlet. The following temporary buoys have been established to mark best water. Ponce de Leon Inlet Buoys 5A, 7A, and 10A.	11485 09-06
FL East Coast	Sebastian Inlet	A 207ft coastal freighter sank in approx position 26-0610N 080-01-15W.	11451 24-03
FL East Coast	Kissimee River	A Submerged piling has been reported in position 28-13-00.00N 081-23-00.000W in Lake Tohopekaliga, Osceola County, FL.	XXXX 35-04
FL East Coast	ST Lucie Inlet	Shoaling reported in the vicinity of St Lucie Inlet Buoy 4 (LLNR 10000), - Buoy 5 (LLNR 10125) - Buoy 6 (LLNR 10130) and - Buoy 7 (LLNR 10125)	11472 12-06
FL East Coast	St Lucie Inlet	Shoaling found in St. Lucie Inlet between Daybeacon 14 (LLNR 10160) and 16 (LLNR 10165) has been marked with a red temporary buoy 14A in position 27-09-54N 080-10-17.955W	11428 05-03
FL East Coast	Stuart	A tug and barge have sunk on east side of north/south jetty of St. Lucie Inlet. in approximate location 27-10-06N 080-08-58W.	11472 50-02
FL East Coast	Jupiter Inlet	An unlit mooring ball with letters "PBSC" in approx position 26-42.12N 080-01.54W	11466 29-03
FL East Coast	Singer Island	Shoaling has been reported in the vicinity of Singer Island Daybeacon 1 (LLNR 10211) A temporary unlighted buoy has been placed in AP 26-46-28.544N 080-02-24.413W	11472 08-06
FL East Coast	Lake Worth Inlet	Shoaling has been reported in Lake Worth Inlet in approximately position 26-46-21.064N 080-01-46.260W.	11472 39-02
FL East Coast	Boca Raton Inlet	Report of 5 ft steel mooring buoy anchored approx 220 yds southeast of Boca Inlet.	11467 17-02
FL East Coast	Boca Raton Inlet	Severe shoaling reported at the entrance to Boca Raton inlet.	11466 20-05
FL East Coast	Malloy Channel	Report of 80-100 ft black pipe obstructing channel 100 yds north of Miami Yacht Club	11467 21-02
FL East Coast	Miami River	Shoaling to an unknown depth has been reported NW of the 5th Street Bridge.	11467 11-01
FL East Coast	Biscayne Bay	Shoaling reported between Biscayne Bay Daybeacon 6A (LLNR 47820) and Biscayne Bay Daybeacon 9 (LLNR 47835).	11467 51-01
FL West Coast	Collier Bay	Dredge Pile reported near entrance to Collier Bay.	11431 20-05
FL West Coast	Capri Pass	Shoaling has been reported in vicinity of Capri Pass Light 2 (LLNR 16945) and between Capri Pass Light 3 (LLNR 16955) and Capri Pass Light 4 (LLNR 16960).	11430 24-05
FL West Coast	Lake Okeechobee	A palm tree was reported obstructing the channel 200 yards south of Lake Okeechobee (Rt2) DBN (LLNR 51550).	11428 45-02
FL West Coast	South Seas	Shoaling between South Seas Plantation Daybeacon 5 (LLNR 55730 Plantation and South Seas Plantation Daybeacon 21 (LLNR 55880).	11427 12-01
FL West Coast	Fort Myers	A partially submerged piling only visible at low tide approximately 5 ft away from Cape Coral Rim Channel DBN 65 (LLNR 53190) located in 26-33-49.773N 081-55-59.117W.	11427 50-02

FL West Coast	Matanzas Pass	Shoaling at Matanzas Pass DBN 3 (LLNR 18090) extending to – LIGHT 7 (LLNR 18120)	11427 03-03
FL West Coast	New Pass	Extensive shoaling exist from New Pass LT NP (LLNR 1345/21585 to New Pass Channel LT 7 (LLNR 21620), water depths are constantly changing and surf breaking.	11425 36-05
FL West Coast	Venice Inlet	Shoaling reported to 8 feet between VENICE INL-SIESTA KEY LT 3 (LLNR 57840) and – LT 5 (LLNR 57860).	11425 31-00
FL West Coast	Cortez Bay	Shoaling reported encroaching into the channel in the vicinity of Siesta Key-Tampa Bay Buoy 39 (LLNR 59345).	11425 03-03
FL West Coast	Siesta Key-TB	Shoaling reported in vicinity of Siesta Key-Tampa Bay Buoy 43. Shoaling extends Channel ward approximate 15yds. A depth of 5 Feet has been reported at mean-low water.	11425 07-06
FL West Coast	Charlotte Harbor	Severe shoaling has been reported in the vicinity of Charlotte Harbor Buoy 3A (LLNR 19915)	11425 31-06
FL West Coast	Tampa Bay	Shoaling reported in position 27-27.55.800N 082-41-30.137W, 145 yards from Siesta Key-Tampa Bay DBN 49 (LLNR 59570).	11425 44-01
FL West Coast	Tampa Bay	Shoaling reported in position 26-48.677N 082-15.825W between Gasparilla Snd DBN 1 (LLNR 21420) and Gasparilla Sound DBN 3 (LLNR 21425).	11425 41-02
FL West Coast	Tampa Bay	Shoaling reported between New Pass Buoy 3A (LLNR 21595) and New Pass Light (LLNR 21620), extending 20 yards channel ward.	11425 40-04
FL West Coast	Tampa Bay	Shoaling in vicinity of Sunshine Skyway Channel between DBN 2 (LLNR 60320), and Sunshine Skyway Channel DBN 3 (LLNR 60325). Also in vicinity of Sunshine Skyway Channel near DBN 2 (LLNR 60320). At low tide, best-marked water depth is only 4.5 ft.	11416 05-02
FL West Coast	Boca Ciega Bay	No Wake sign reported destroyed 100 yards south of Pinellas Bayway Structure "C" Bridge located below the waterline in approximate position 27-42.5N, 82-43.3W.	11411 03-03
FL West Coast	Pass-A-Grille	Partially submerged piling reported 50 yds off east side of Mud Key in north Pass-A-Grille.	11411 24-03
FL West Coast	Tampa Bay	195FT sunken barge approximately 11NM NW of Egmont Key	11412 52-05
FL West Coast	Tampa Bay	Shoaling reported in the vicinity of Pithlachascotee River Light 16 (LLNR 26585)	11409 20-06
FL West Coast	New Port Richey	Sunken 50FT fishing vessel approximately 312 degrees T at 2,700 yards from Cotee River Light 1 (LLNR 26505) Charts: 11409 and 11411.	11411 52-05
FL West Coast	Tampa Bay	Report of shoaling encroaching southward from Anclote Key past Anclote Anchorage South Entrance Daybeacon 3X. Depth less than published depth of 9 feet	11411 07-06
FL West Coast	Tampa Bay	A submerged 15 foot plastic piling reported approximately 80 yards bearing 225 degrees from Tampa Bay Cut F Channel Lighted Buoy 10F (LLNR 22845).	11416 30-02
FL Okeechobee	Route 1	Obstruction/Shoaling in vicinity DBN 4 (LLNR 51200)	11428 46-00
SC AICW	Winyah Bay	Shoaling near (STM 363), 1.0 miles N (Town Creek) in McClellanville, SC.	11534 31-00
SC AICW	Elliott Cut	Shoaling between Stono Riv DBN 19 (LLNR 3845) at the intersection of Elliott Cut.	11522 31-00
SC AICW	Dawho River	Continued shoaling to less than 6.5 feet in the Dawho River, near (STM 497). Encroaching 9 foot Shoal extends 20 yards into the channel from LT 110 through B 113.	11518 17-01
SC AICW	Little River	Shoaling near (STM 363), 1.0 miles N of Little Riv-Winyah Bay DBN 24B (LLNR 33725.5).	11518 31-00
SC AICW	Ashepoo River	Heavy shoaling near (STM 511) FENWICK CUT LT 162 (LLNR 35140).	11518 31-00
SC AICW	Ashepoo River	Shoaling between Ashepoo/Coosaw Cutoff Temporary Buoys 184A & - B 185 And starting in the channel near Ashepoo/Coosaw Cutoff Light 184	11518 18-01
SC AICW	Winyah Bay	Shoaling near Winyah Bay-Charleston Harbor DBN 118 (LLNR 34515), and DBN 119 (LLNR 34520) (STM 511) to 8.5 feet.	11518 31-00
SC	AICW	Shoaling to a depth of 8 feet has been reported in the vicinity of Winyah Bay-Charleston Harbor Daybeacon 37 (LLNR 34240).	11518 02-01
SC	AICW	Shoaling has been reported in the vicinity of Little River-Winyah Bay DBN 22A (LLNR 33710.5), the following temporary Buoys have been established to mark the shoal; Little River-Winyah Bay B 24A (LLNR None) Little River-Winyah Bay B 24B (LLNR None) and Little River-Winyah Bay DBN 25 (LLNR 33735) in approximate position 33-44.1N 078-52.9W.	11534 02-01
FL AICW	St Johns River	Shoaling has been observed between Gunnison Cut DBN 73 (LLNR 38270) and Sister Creek (LLNR 38300). Water depth reported 7 feet.	11489 06-04
FL AICW	Matanzas River	Shoaling has been reported north of Matanzas River Bridge, west side. Depth of 5 feet reported in position 29-33-45.571N 081-11-06.481W	11485 09-05
FL AICW	Matanzas Inlet	Shoaling has been reported in the vicinity of Matanzas River Buoy 80A (LLNR 39525.5) to a depth of 4 feet at low tide.	11485 10-06
FL AICW	Mantanzas Inlet	Shoaling has been reported in the vicinity of Mantanzas River Buoy 81A (LLNR 39535) in Position 29-43-10.198N 081-14-44.717W	11485 20-06
FL AICW	Ponce de Leon Cut	Shoaling has been reported in the vicinity of Ponce de Leon Cut Junction DBN (40615) to Ponce de Leon Cut DBN 18 (LLNR 40610). Water depth in marked channel is 6 feet at low tide.	11485 10-06
FL AICW	Tolomato River	USACE survey has reported shoaling from PABLO CREEK LT 46 (LLNR 38610) to TOLOMATO RIVER LT 3 (LLNR 38625).	11489 31-01
FL-AICW	Indian River (SS)	Shoaling reported between Indian River (SS) Daybeacon 128 (LLNR 44135) and –Daybeacon 130 (LLNR 44145).	11472 16-06
FL-AICW	Indian River (SS)	Shoaling exist across entire channel between Indian River (SS) Daybeacon 184 (LLNR 45085) and Daybeacon 186 (LLNR 45110). Reported depths of 5 feet at low tide.	11485 31-00
FL AICW	Ponce de Leon	Shoaling between Ponce de Leon Cut DBN 2 (LLNR 40500) and DBN 3 (LLNR 40505).	11485 31-00
FL AICW	Ponce de Leon	Ponce de Leon Cut Daybeacon 6 (LLNR 40530) relocated due to shoaling.	11485 10-06
FL AICW	Boynton Inlet	Heavy shoaling near Lake Worth DBN 46 (LLNR 47015).	11467 31-00
FL-AICW	Hillsboro Inlet	Shoaling has reported in Ocean Park Channel between Daybeacon 1 (LLNR 47040) and Daybeacon 8 (LLNR 47075).	11467 08-06

FL-AICW	Lake Worth inlet	Shoaling has been reported along the north side of Entrance Channel	11474 35-04
FL-AICW	Bakers Haulover	Extensive shoaling has been reported in between Biscayne Bay Daybeacon 6 (LLNR 47815) and Biscayne Bay Daybeacon 11 (LLNR 47840)	11467 50-04
FL AICW-	Biscayne Bay	The slow speed sign 50 yds south of the east span of Venetian Causeway is damaged and partially submerged.	11468 32-03
FL AICW	Venice Inlet	Shoaling 600 yards North and 200 yards South of the Albee Bridge.	11425 31-00
PR	Vieques Snd Culebra	A submerged offshore mariculture site has been established 2 miles southeast of Culebra Island and is outlined by coordinates 18-16.67N 065-20W, 18-16.4N 065-19.72W	25650 32-02
PR-	Bahia de San Juan	Due to proximity to shoal water and to better mark controlled channel depth relocated Bahia de San Juan Lighted Buoy 10 (LLNR 30800).	25670 09-06

A. BRIDGE CONSTRUCTION/REPAIR

Location	Type of Work	EST Comp Date	Bridge	Ref LNM
SC-Charleston Hbr-Cooper Riv	Bridge Construction	NOV 07	Grace Memorial Bridge	48-02
SC-Charleston Hbr-Cooper Riv-Town Cr	Bridge Construction	NOV 07	Silas N. Pearman Bridge	48-02/34-06
SC-Charleston Hbr-Cooper Riv Bridges	Demolition	NOV 07	Grace Memorial/Pearman	34-05/34-06
FL-St. Johns Riv-Trout River	Bridge Construction	MAR 08	I-95 Bridge	12-05
FL-ICW-St. Johns Riv	Bridge Construction	OCT 06	Wonderwood Dr/Girvin Rd	01-03
FL-ICW-Jacksonville Bch	Bridge Construction	FEB 09	McCormick (Beach Blvd)	34-06
FL-ICW-St. Augustine	Bridge Construction	JAN 07	Bridge of Lions Bridge	08-05/21-05
FL-ICW-Indian Riv-Pineda	Bridge Repairs	APR 07	Pineda Cswy Bridge A	34-06
FL-ICW-Indian Riv-Banana Riv	Bridge Repairs	NOV 06	SR 520 Bridge	33-06/35-06
FL-ICW-Banana Riv-Grand Canal	Bridge Repairs	NOV 06	Tortoise Island Bridge	34-06
FL-ICW-Indian Riv (S Sec)	Bridge Demolition	NOV 06	Ernest F. Lyons Bridge	34-06
FL-ICW-W Palm Bch	Bridge Repairs	JUL 08	PGA Blvd Bridge	23-05
FL-ICW-Hollywood	Bridge Repairs	JUL 07	Hollywood Blvd Bridge	15-06/34-06
FL-ICW-Biscayne Bay-Indian Ck	Bridge Repairs	SEP 06	E 79 th St Cswy Bridge	26-06/34-06
FL-ICW-Biscayne Bay-Indian Ck	Bridge Repairs	JAN 07	E 63 rd St Bridge	27-06/34-06
FL-ICW-Biscayne Bay-Indian Ck Canal	Bridge Repairs	JAN 07	W 63 rd St Fixed Bridge	36-06
FL-ICW-Okeechobee-Sanibel	Bridge Construction	JAN 07	Sanibel Cswy Bridge	27-05
FL-ICW-Lemon Bay	Bridge Repairs	OCT 06	Tom Adams Bridge	23-06/33-06
FL-Anna Maria Sound-Bimini Bay	Bridge Construction	APR 07	Key Royale Dr Bridge	23-06
FL-ICW-Treasure Island	Bridge Construction	NOV 06	Treasure Isl Bridge	14-06
FL-Johns Pass	Bridge Construction	JAN 09	Johns Pass Bridge	07-06/08-06
FL-ICW-Boca Ciega Bay	Bridge Repairs	OCT 06	Welch/Tom Stuart Cswy	23-06

B. DRAWBRIDGE STATUS SUMMARY

The following is a list of known drawbridge discrepancies, restrictions, and closures in navigable waters of the Seventh Coast Guard District. Additional information regarding bridges can be found in Volume 4 (Cape Henry to Key West) or volume 5 (Gulf of Mexico, Puerto Rico and Virgin Islands) of the U.S. Coast Pilot, 33 CFR 117, or by calling (305) 415-6743. Unless otherwise noted in the date column, the described status will be in effect until further notice. Mariners knowing of bridge activities not listed below are urged to notify the nearest Coast Guard unit.

BRIDGE	LOCATION	DATE	STATUS	REF
Causton Bluff	ICW, Chatham County, GA	Until Aug 30, 06	Minor delays	23-06/33-06
Tortoise Isl	Grand Canal, Satellite Bch	Until Nov 30, 06	Single-leaf Ops	34-06
PGA	ICW, W Palm Bch, FL	Until Sep 18, 06	Single-leaf Ops	23-05/34-06
N.E. 14 th St	ICW, Hillsboro, FL	Until Sep 30, 06	Single-leaf Ops/Special Regs	08-06/26-06
Oakland Park	ICW, Ft Lauderdale, FL	Until Nov 26, 06	Single-leaf Ops/Special Regs	35-06
Hollywood Blvd	ICW, Hollywood, FL	Until Jul 27, 07	Single-leaf Ops/Double-leaf available	15-06
E 79 th St	Indian Cr, Miami, FL	Until Sep 30, 06	Closed to navigation	26-06/35-06
63 rd St	Indian Cr, Miami, FL	Until Jan 10, 07	Hourly Openings/Special Regs	27-06/34-06
Tom Adams	ICW, Lemon Bay, FL	Until Oct 30, 06	Single-leaf Ops/Double-leaf available	26-06
Treasure Isl	ICW, Treasure Isl, FL	Until Nov 1, 06	Twenty minute schedule	20-05
Welch Cswy	ICW, Madeira Bch, FL	Until Oct 29, 06	Special Regs	26-06
Pinellas Bayway Struc E	ICW, St Pete Bch, FL	Until Oct 29, 06	Special Regs	33-06

C. BRIDGE INFORMATION.

SOUTH CAROLINA – CHARLESTON HARBOR – COOPER RIVER: Temporary Safety Zone.

The Coast Guard is establishing a temporary safety zone on the navigable waters of Hog Island Reach on the Cooper River, for the demolition and recovery operations of the Grace Memorial and Silas Pearman Bridges. This rule prohibits entry, anchoring, mooring, or transiting within the temporary safety zone without the permission of the Captain of the Port Charleston or his designated representative. This regulation is necessary to protect life and property on the navigable waters of the Cooper River from the danger associated with the demolition and recovery operations of these bridges. This rule is effective until 8:01 a.m. on December 31, 2006.

For further information contact Chief Warrant Officer James J. McHugh, Sector Charleston office of Waterways Management at 843-724-7647.

Ref: LNM 08 through 35-06 and Docket Number (COTP Charleston 06-003) Chart: 11524

FLORIDA – ST JOHNS RIVER – ORTEGA RIVER – ORTEGA RIVER DRAWBRIDGE: Fender Repairs.

The Coast Guard has been advised that the Ortega River Drawbridge, Ortega River mile 0.3, Jacksonville, Florida will be undergoing fender system repairs from September 5, 2006 through January 15, 2007. These repairs should have no impact on navigation.

Chart: 11491

CG File: 2376

FLORIDA – ST JOHNS RIVER – ORTEGA RIVER – ORTEGA RIVER BRIDGE: Fender Repairs.

The Coast Guard has been advised that the Ortega River Bridge, Ortega River mile 1.04, Jacksonville, Florida will be undergoing fender system repairs from September 5, 2006 through January 15, 2007. These repairs should have no impact on navigation.

Chart: 11491

CG File: 2367

FLORIDA – ATLANTIC INTRACOASTAL WATERWAY – PALM SHORES TO WEST PALM BEACH – INDIAN RIVER (SOUTH SECTION) – ERNEST F. LYONS BRIDGE: Bridge Construction/Demolition.

The demolition of the Ernest F. Lyons (Ocean Boulevard) Bridge, Atlantic Intracoastal Waterway mile 984.9, Martin County, Florida is scheduled to begin on September 27, 2006 and will continue until November 8, 2006. During this time period there will be periodic waterway closures. Updates will be provided via future Broadcasts and Local Notice to Mariners.

Ref: LNM 34 through 35-06
Chart: 11472

CG File: 3839

FLORIDA – ATLANTIC INTRACOASTAL WATERWAY – LAKE WORTH INLET TO JUPITER INLET – PGA BOULEVARD BRIDGE: Bridge Repairs.

The PGA Boulevard Bridge (SR 786), Intracoastal Waterway mile 1012.6, West Palm Beach, Florida is on single-leaf operations only until September 18, 2006.

Ref: LNM 23 through 35-06 and BNM 276-05-MIA
Chart: 11467

CG File: 3132

FLORIDA – ATLANTIC INTRACOASTAL WATERWAY – LAKE WORTH INLET TO JUPITER INLET – SOUTHERN BOULEVARD BRIDGE: Notice of Proposed Rulemaking.

The Coast Guard proposes to change the regulation governing the operation of the Southern Boulevard (SR 700/80) Bridge across the Atlantic Intracoastal Waterway mile 1024.7, Palm Beach, Florida. The proposed rule would require the drawbridge to open twice an hour. The proposed schedule is based on requests from vessel operators along the Atlantic Intracoastal Waterway. The proposed schedule would require the bridge to open on the quarter and three quarter-hour and would meet the reasonable needs of navigation while not impacting vehicular traffic. Comments and related material must reach the Coast Guard on or before October 16, 2006.

You may mail comments and related material to Commander (dpb), Seventh Coast Guard District, 909 S.E. 1st Avenue, Room 432, Miami, Florida 33131-3050. You may also email your comments to Michael.b.lieberum@uscg.mil. Please include your name and address on all correspondence.

Ref: Federal Register Docket #CGD07-06-130

Chart: 11467

FLORIDA – ATLANTIC INTRACOASTAL WATERWAY – WEST PALM BEACH TO MIAMI – NE 14TH STREET BRIDGE: Bridge Repairs/Restrictions.

The Coast Guard is temporarily changing the regulations governing the operation of the N.E. 14th Street Bridge, Atlantic Intracoastal Waterway mile 1055.0, Pompano, Florida. This temporary rule provides for solely single-leaf operations twice an hour between July 5, 2006 and September 30, 2006.

Ref: LNM 08-06 through 35-06 and Federal Register Docket #CGD07-05-162
Chart: 11467

CG File: 3154

FLORIDA – ATLANTIC INTRACOASTAL WATERWAY – WEST PALM BEACH TO MIAMI – OAKLAND PARK BOULEVARD BRIDGE: Bridge Painting.

The Oakland Park Boulevard Bridge, Intracoastal Waterway mile 1060.5, Fort Lauderdale, Broward County, Florida is on single-leaf operations until November 22, 2006. A double-leaf opening is available with a three hour notice to the bridge tender.

Ref: LNM 35-06
Chart: 11467

CG File: 2947

FLORIDA – ATLANTIC INTRACOASTAL WATERWAY – WEST PALM BEACH TO MIAMI – HOLLYWOOD BOULEVARD BRIDGE: Bridge Construction.

The Hollywood Boulevard Bridge, Intracoastal Waterway mile 1072.2, Hollywood, Broward County, Florida will be on single-leaf operations on the hour and half-hour from April 17 to July 27, 2007, due to construction. A double-leaf opening will be available with a two-hour

notice to the bridge tender. The horizontal clearance will be reduced to 50 feet during this time period. From October 26 through November 26, 2006, the bridge will open a single-leaf only on the hour and half-hour.

LNM 15-06 through 35-06
Chart: 11467

CG File: 2899

FLORIDA – ATLANTIC INTRACOASTAL WATERWAY – WEST PALM BEACH TO MIAMI – BISCAYNE BAY – INDIAN CREEK – 63rd STREET BRIDGE: Bridge Repairs.

The 63rd Street Bridge, Indian Creek mile 4.0, Miami Beach, FL will open a double-leaf on the top of the hour between 8 am and 12:10 am until January 10, 2007.

Ref: LNM 27 through 35-06 and BNM 367-06-MIA
Chart: 11467

CG File: 2362

FLORIDA – ATLANTIC INTRACOASTAL WATERWAY – WEST PALM BEACH TO MIAMI – BISCAYNE BAY – INDIAN CREEK CANAL – WEST 63rd STREET BRIDGE: Bridge Repairs.

The West 63rd Street Fixed Bridge, Indian Creek Canal mile 4.0, Miami Beach, FL vertical and horizontal clearances will be reduced due to repairs from September 7 to January 31, 2007.

Chart: 11467

CG File 2362

FLORIDA – GULF INTRACOASTAL WATERWAY – SAN CARLOS BAY TO CHARLOTTE HARBOR – SANIBEL ISLAND BRIDGE: Safety Zone.

The Coast Guard is establishing a temporary safety zone on the waters of San Carlos Bay, Florida in the vicinity of the Sanibel Island Bridge span "A" while bridge construction is conducted. This rule is necessary to ensure the safety of the construction workers and mariners on the navigable water of the United States. This rule is effective from 6 am on May 30, 2006 through 9 pm on September 30, 2006.

Ref: LNM 33 through 35-06 and Federal Register Docket #COTP St. Petersburg 06-115 Chart: 11426

SAFE BOATING AND SEAMANSHIP PROGRAMS

For addition information on CG Auxiliary Public Education Boating Programs, contact 1-800-336-2628 or <http://www.cgaux7.org/>

HOST	DATES	TIME	LOCATION
U.S. Coast Guard Auxiliary Flotilla 42 (321) 773-7599	Continuous Boating Skills and Seamanship	7:30 p.m.– 9:30 p.m. (Tuesdays & Thursdays) 6 Weeks, 12 Lessons	Palm Bay Community Ctr 1502 Port Malabar Blvd Palm Bay, FL
U.S. Coast Guard Auxiliary Flotilla 78 (727) 360-7496	Continuous Boating Skills and Seamanship	7:30 p.m.– 9:30 p.m. (Mondays) 13 Weeks	Webster Community Ctr 1500 Passe Grille Blvd St Petersburg, FL
U.S. Coast Guard Auxiliary Flotilla 79 (813) 855-6997	Continuous Boating Skills and Seamanship	7:30 p.m.– 9:30 p.m. (Wednesdays) 13 Weeks	5108 Gandy Blvd Salty Sol Boat Ramp Tampa, FL
U.S. Coast Guard Auxiliary Flotilla 7-16 (727) 323-5950	Continuous Boating Skills and Seamanship	7:30 p.m.– 9:30 p.m. (Tuesdays) 13 Weeks	USCG Auxiliary Bldg 3120 Miriam St South Gulfport, FL
U.S. Coast Guard Auxiliary Flotilla 51 (561) 844-3114	Continuous Boating Skills and Seamanship	7:30 p.m.– 9:30 p.m. (Tuesdays & Thursdays) 6 Weeks, 12 Lessons	CG Aux Bldg, P Foster Park 900 E. Blue Heron Blvd Riviera Beach, FL
U.S. Coast Guard Auxiliary Flotilla 55 (561) 585-8918	Continuous Boating Skills and Seamanship	7:00 p.m.– 9:00 p.m. (Mondays & Wednesdays) 6 Weeks, 12 Lessons	Santaluces High School Lawrence Road Lantana, FL
U.S. Coast Guard Auxiliary Flotilla 52 (772) 744-3876	Continuous Boating Safety Program	9:00 a.m.– 5:00 p.m. (Last Saturday of Each Month)	CG Aux Building Jupiter Lighthouse Park Jupiter, FL
U.S. Coast Guard Auxiliary Flotilla 81 (941) 761-4303/761-7393	Continuous Boating Skills and Seamanship	7:00 p.m.– 9:00 p.m. (Tuesdays & Thursdays) 4 Weeks	CG Aux Bldg, G.T.Bray Park 5801 53 rd Ave Court W Bradenton, FL
U.S. Coast Guard Auxiliary Flotilla 14-08 (904) 721-1346	Continuous Boating Safety Program	7:30 a.m.– 5:00 p.m. (Saturdays)	Stellar Building 2900 Hartley Road Jacksonville, FL
U.S. Power Squadron Fort Lauderdale (954) 523-3577	Continuous Basic Safe Boating Course	7:00 p.m. – 9:00 p.m. (1 st Monday of each month)	Lauderdale Marine Ctr 2029 SW 20 th Street Fort Lauderdale, FL
U.S. Coast Guard Auxiliary Flotilla 11-1 (727) 469-8895	Continuous America's Boating Course	7:30 p.m. – 9:30 p.m. (Mondays and Thursdays)	Clearwater Comm Sailing Ctr 1001 Gulf Blvd Sand Key (Clearwater), FL
U.S. Coast Guard Auxiliary Flotilla 09-06 (239) 594-8009	September 7 to October 19, 2006 Boating Skills and Seamanship	7:00 p.m. – 9:00 p.m. (Mondays and Thursdays)	Public Education Facility Wiggins Pass Naples, FL
U.S. Power Squadron Cutler Cove (395) 238-4807	September 12 to October 10, 2006 Safe Boating Course	7:00 p.m. – 9:30 p.m. (Tuesdays) 5 Weeks	Palmetto Middle School 7351 SW 128 th Street Miami, FL
U.S. Coast Guard Auxiliary Flotilla 38 (954) 915-0667	September 14, 2006 Boating Skills and Seamanship	7:30 p.m. – 9:30 p.m. (Tuesdays and Thursdays)	Plantation Comm Center 5555 Palm Tree Road Plantation, FL
U.S. Coast Guard Auxiliary Flotilla 14-4	September 16, 2006 America's Boating Course	7:30 a.m. – 5:00 p.m. (Saturday)	Captains Club 13363 Beach Blvd

(904) 821-9692

Jacksonville, FL

U.S. Coast Guard Auxiliary Flotilla 09-06 (239) 594-8009	October 7, 2006 GPS for Mariners	9:00 a.m. – 12:00 p.m. (Saturday)	Public Education Facility Wiggins Pass Naples, FL
U.S. Coast Guard Auxiliary Flotilla 09-06 (239) 594-8009	October 21, 2006 Local Knowledge	9:00 a.m. – 11:00 p.m. (Saturday)	Public Education Facility Wiggins Pass Naples, FL
U.S. Coast Guard Auxiliary Flotilla 09-06 (239) 594-8009	October 23 to December 7, 2006 Boating Skills & Seamanship	7:00 p.m. – 9:00 p.m. (Mondays and Thursdays)	Public Education Facility Wiggins Pass Naples, FL
U.S. Coast Guard Auxiliary Flotilla 09-06 (239) 594-8009	November 4, 2006 GPS for Mariners	9:00 a.m. – 12:00 p.m. (Saturday)	Public Education Facility Wiggins Pass Naples, FL
U.S. Coast Guard Auxiliary Flotilla 09-06 (239) 594-8009	November 18, 2006 Local Knowledge	9:00 a.m. – 12:00 p.m. (Saturday)	Public Education Facility Wiggins Pass Naples, FL
U.S. Coast Guard Auxiliary Flotilla 09-06 (239) 594-8009	December 2, 2006 GPS for Mariners	9:00 a.m. – 12:00 p.m. (Saturday)	Public Education Facility Wiggins Pass Naples, FL
U.S. Coast Guard Auxiliary Flotilla 09-06 (239) 594-8009	December 16, 2006 Local Knowledge	9:00 a.m. – 12:00 p.m. (Saturday)	Public Education Facility Wiggins Pass Naples, FL

Programs are free; there is a nominal fee for text workbooks, etc.



U. S. Department of Homeland Security
U. S. Coast Guard Sector Charleston
Marine Safety Information Bulletin



MSIB 049-06

10 MAY 2006

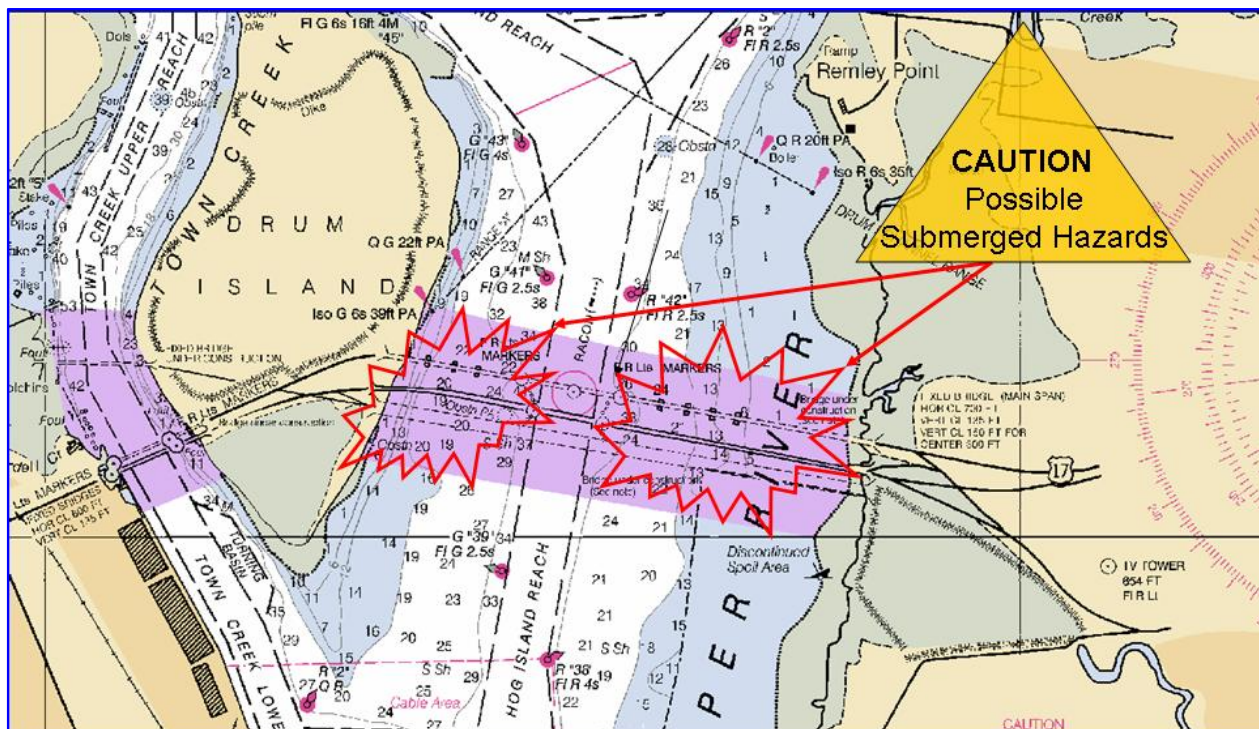
**POSSIBLE SUBMERGED HAZARDS/DEMOLITION DEBRIS IN COOPER RIVER
SHALLOWS FOR DURATION OF GRACE AND PEARMAN BRIDGE DEMOLITION**

Boaters are advised to stay in the main channel when transiting under the new Ravenel Bridge on the Cooper River. The South Carolina Department of Transportation and their demolition contractor are in the process of removing the remaining foundations for the Grace and Pearman bridges. This project will continue into 2007. During this period, there is the possibility of both partially submerged hazards and demolition debris in the areas outside the main channel. The contractor's work area will be marked with temporary buoys, but these buoys may not be visible at night. To avoid hazards boaters should transit only through the main Cooper River channel (HOG ISLAND REACH) or should consider using Town Creek channel as an alternate route.

Boaters are also reminded to obey Navigation Rule 9 and give large ships the right of way while in or planning to cross the main channel. Vessels less than 20 meters long, and sailing vessels, shall not impede the passage of a vessel that can safely navigate only within a narrow channel.

The U.S. Coast Guard has designated the waters under the old and new bridges as a Regulated Navigation Area (shown below in purple). All vessels are prohibited from anchoring, mooring, or loitering within the regulated area, unless specifically authorized by the U.S. Coast Guard.

Boaters should contact Coast Guard Sector Charleston's 24x7 operations center on VHF channel 16 or via phone at (843) 724-7616 to report any concerns or ask any questions about this notice.



“You’re in Command. Please Boat Responsibly!”

Publication—National Ocean Service—U.S. Coast Pilot 5, Atlantic Coast: Gulf of Mexico, Puerto Rico, and Virgin Islands, 2006 (34th) Edition. Change No. 09.

Coast Pilot 5 34th Ed 2006

Corrections

Page 290-Paragraph 75, lines 6-7;
read:
protected by twin jetties. In
March-May 2006, the controlling
depth was 6.8 feet (9.4 feet at
midchannel). The channel is marked
by ...

(CL 832/06)

Page 299-Paragraph 196, lines 7-10;
read:
channel running parallel to the
highway bridge, In April-June 2006,
the controlling depth was 7.1 feet
(8.0 feet at midchannel). The
channel is marked by lights and ...

(CL 905/06)

Page 312-Paragraph 43, line 12;
read:
Horn Buoy M (30°07'30"N.,
88°04'07"W.). For boarding, ...
(33/06 CG8; LL/06)

Page 314-Paragraph 67, lines 4-6;
read:
part of Garrows Bend. (See Notice
to Mariners and latest edition of
charts for controlling depths.) The
channel is ...

(NOS 11376; CL 885/06)

Page 328-Paragraph 237, lines 12-
14; read:
U.S. Route 90 highway bridge. In
May 2006, the controlling depth was
7.7 feet to Light 18, thence 8.5
feet (9.0 feet at midchannel) to
...

(CL 826/06; BPs 189327-32)

Page 507-Paragraph 405, line 3;
read:
waterway at **Mile 440.0W** has berths,
electricity, gasoline, ...

(NOS 11319; CL 120/03)