



Prepared in cooperation with the Virginia Department of Transportation and the Virginia Department of Environmental Quality

Drainage Areas of Selected Streams in Virginia

Open-File Report 2006–1308

**U.S. Department of the Interior
U.S. Geological Survey**

Drainage Areas of Selected Streams in Virginia

By Donald C. Hayes and Ute Wiegand

Prepared in cooperation with the
Virginia Department of Transportation and the
Virginia Department of Environmental Quality

Open-File Report 2006–1308

U.S. Department of the Interior
U.S. Geological Survey

U.S. Department of the Interior
Dirk A. Kempthorne, Secretary

U.S. Geological Survey
Mark D. Myers, Director

U.S. Geological Survey, Reston, Virginia: 2006

For product and ordering information:

World Wide Web: <http://www.usgs.gov/pubprod>

Telephone: 1-888-ASK-USGS

For more information on the USGS—the Federal source for science about the Earth, its natural and living resources, natural hazards, and the environment:

World Wide Web: <http://www.usgs.gov>

Telephone: 1-888-ASK-USGS

Any use of trade, product, or firm names is for descriptive purposes only and does not imply endorsement by the U.S. Government.

Although this report is in the public domain, permission must be secured from the individual copyright owners to reproduce any copyrighted materials contained within this report.

Suggested citation:

Hayes, D.C., and Wiegand, Ute, 2006, Drainage areas of selected streams in Virginia: U.S. Geological Survey Open-File Report 2006–1308, 51 p., available online at <http://pubs.water.usgs.gov/ofr2006-1308>

Contents

Abstract.....	1
Introduction.....	1
Methods.....	1
Quality Assurance.....	2
Drainage Areas	3
Summary.....	4
Acknowledgments	4
References Cited.....	4

Figures

1. Map showing locations of digitized drainage basins in and around Virginia.....2

Tables

1. Three test-area sizes generated by three area-computation methods3
2. Drainage areas of streams tributary to the North Atlantic Slope, South Atlantic Slope, and Ohio River Basins in and around Virginia5

Conversion Factors

Inch/Pound to SI

Multiply	By	To obtain
	Length	
mile (mi)	1.609	kilometer (km)
	Area	
square mile (mi ²)	2.590	square kilometer (km ²)

Horizontal coordinate information is referenced to the North American Datum of 1983 (NAD83).

Acronyms used in this report:

DEM	digital elevation model
ESRI	Environmental Systems Research Institute, Inc.
GIS	geographical information system
NAD27	North American Datum of 1927
USGS	U.S. Geological Survey
UTM	Universal Transverse Mercator
VDCR	Virginia Department of Conservation and Recreation
VDEQ	Virginia Department of Environmental Quality

Drainage Areas of Selected Streams in Virginia

By Donald C. Hayes and Ute Wiegand¹

Abstract

Drainage areas were determined for more than 1,600 basins in the three major river basins of Virginia—the North Atlantic Slope, South Atlantic Slope, and Ohio River Basins. Drainage areas range from 0.004 square mile to 7,866 square miles. A geographic information system was used to digitize and store data associated with the drainage basins. Drainage divides were digitized from digital U.S. Geological Survey 7.5-minute, 1:24,000-scale, topographic quadrangles using procedures recommended by the Subcommittee on Hydrology, Federal Interagency River Basin Committee. Digital drainage basins were quality assured, polygons of the closed drainage basins were generated, and drainage areas were computed.

Introduction

Drainage area is one of the most important factors used in planning, designing, and regulating water-related projects and resources. Drainage area is usually the dominant independent variable used to define the available water resource for regulating effluents, designing transportation structures, determining flood magnitude and extent, and planning for water supply.

As a result of cooperative agreements among the U.S. Geological Survey (USGS), Virginia Department of Transportation, and Virginia Department of Environmental Quality (VDEQ), this report presents consistently determined drainage-area data for more than 1,600 drainage basins in and around Virginia (fig. 1). These drainage basins are associated with active and discontinued streamflow-gaging stations of the USGS and VDEQ, locations where miscellaneous hydrologic data are or have been collected, locations of special investigations, and river confluences. Drainage divides were digitized from digital maps of uniform scale and quality. A polygon was generated from the closed boundaries of each basin and drainage area was calculated. The calculated drainage areas range from 0.004 square mile (mi^2) to 7,866 mi^2 . The digital data are available for research and water-management applications (Krstolic, 2006).

Methods

A geographical information system (GIS) was used to digitize and store data as lines representing drainage divides and polygons representing closed drainage basins in and around Virginia. Published guidelines (Dupree and Litke, 2005) were followed for developing the GIS database and for digitizing and verifying of the data. The Albers Equal-Area (Albers) projection was chosen as the reference projection for the database so that all mapped areas would have the same proportional relation to representative areas on Earth (Snyder, 1982), and to eliminate potential problems associated with using multiple State Plane or Universal Transverse Mercator (UTM) zones that cover the State. North American Datum of 1983 (NAD83) was chosen as the reference horizontal datum for the database. Digital data and images were transformed to the same projection and datum when necessary.

Drainage basins were delineated along drainage divides, which are indicated by elevation contours, using digital USGS 7.5-minute, 1:24,000-scale topographic quadrangles. The maps used were published in the UTM projection and North American Datum of 1927 (NAD27). Delineation was performed using published guidelines (U.S. Geological Survey, 1951). For very small basins (generally basins less than 0.1 mi^2), field surveys and observations, construction drawings, and aerial photographs were used to define the drainage divide.

Drainage divides delineated by the Virginia Department of Conservation and Recreation (VDCR) were used when the divides coincided with the drainage basin being determined (Karl Huber, VDCR, unpub. data, 2006). Delineation and digitization of drainage divides determined by VDCR personnel were consistent with procedures and methods used in this study.

In the past, conventional delineation methods were used to compute and adjust drainage-area computations so that mechanical and human bias were reduced. After a drainage basin was delineated, all areas and subareas within the selected quadrangles were planimetered, including areas outside the delineated drainage basin. All subareas measured within selected quadrangles were “adjusted on the basis of proportion to the total area measured so that the summation of the adjusted partial areas matches the total geographic area within the quadrilateral as determined from the Smithsonian

¹U.S. Geological Survey volunteer from September through December 2005; U.S. Geological Survey contractor from January through June 2006.

2 Drainage Areas of Selected Streams in Virginia

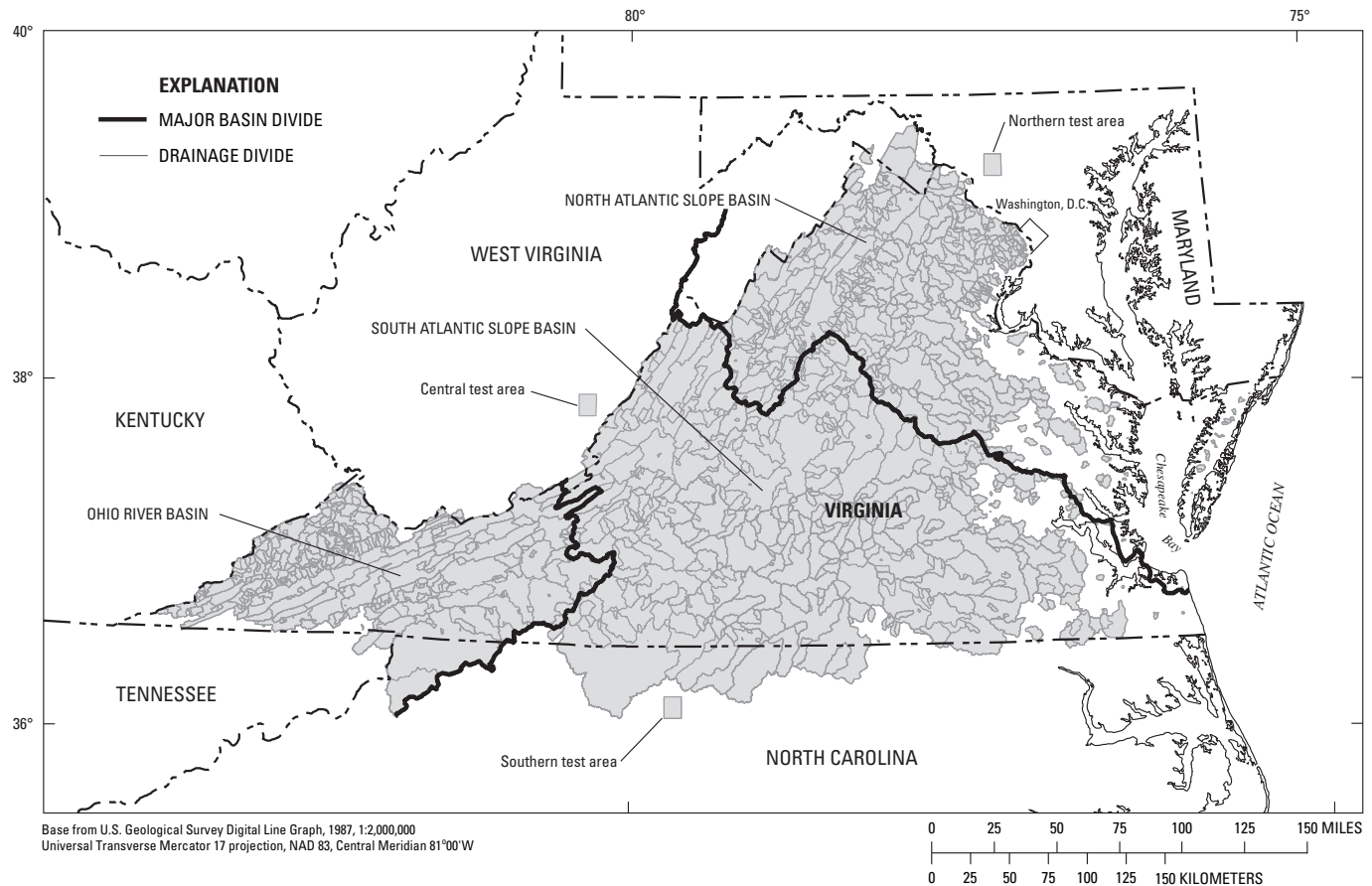


Figure 1. Locations of digitized basin boundaries in and around Virginia.

Geographic Tables” (Woodward, 1929; U.S. Geological Survey, 1951).

For this study, drainage divides for each drainage basin were digitized and stored in a GIS. A polygon was generated from the closed boundaries of each basin and also stored in the GIS. Drainage area of the polygon was computed in square meters and converted to square miles. The GIS calculated area was based on a Gaussian algorithm (Environmental Systems Research Institute, Inc., 2003).

Quality Assurance

Quality assurance was conducted on four aspects of the drainage-area determination process: GIS spatial alignment, GIS spatial integrity, drainage basin delineation and digitization, and area computations.

GIS spatial alignment was quality assured by locating reference points (ticks) for every 2.5 minutes of latitude and longitude between 36° N. 75° W. and 40° N. 84° W. and comparing these locations to the geographic reference points on the digital topographic quadrangles. The tick areas covered the maximum areal extents expected during delineation or digitization. GIS layers containing the tick locations

were built in the Albers projection with both NAD83 and NAD27 horizontal datums. Several of the digital 7.5-minute topographic quadrangle geographic reference marks did not align with the ticks and were found to have incorrect datum information. After the datum information was corrected, the geographic reference marks coincided with the ticks.

Spatial integrity was quality assured by defining topology or spatial rules in the GIS database to control the spatial relation of digitized drainage divides and polygon features. Digitized drainage divides were not allowed to have dead ends or to intersect another drainage divide without a junction node present. In addition, digitized drainage divides and polygon boundaries were required to remain coincident (Dupree and Litke, 2005).

Drainage basin delineation and digitization were quality assured by a second review of the digital drainage divide either imported from the VDCR data or generated by digitizing. Each digital drainage divide can be checked multiple times because the divides often are shared by several basin polygons. Also, the drainage basins were reviewed by comparing the polygons to digital stream networks and to polygons of drainage basins computed by using a digital elevation model (DEM).

Area computations were quality assured to verify the GIS area-computation method, to test for spatial or computational bias in the GIS-generated polygons, and to confirm location of the basin outlet and inclusion of all tributary areas. First, the GIS area-computation method was verified by digitizing the four corner ticks of three 7.5-minute test areas in the north, central, and south regions of the GIS extent (fig. 1); generating polygons of the test areas; and comparing the size of the GIS-generated polygons to the size of the polygons computed by using two other area-computation methods. GIS-computed polygons defined by the Albers projection and NAD83 were compared to (1) areas determined from Smithsonian Geographical Tables (Woodward, 1929; U.S. Geological Survey, 1951), and (2) grid-coordinate areas mathematically computed from the area-by-coordinates technique (Lindeburg, 1989) defined by the UTM projection and NAD83 (table 1). The area values were within 0.04 mi² or about 0.07 percent. A portion of the difference in area values is a result of the distortion of each map projection (Snyder, 1982).

Second, to test for spatial or computational bias in the GIS-generated areas, the central 7.5-minute test area was divided into three subareas consisting of three rows of three 2.5-minute quadrangles. The first subarea consists of all three 2.5-minute quadrangles of the top row. The second subarea consists of the center 2.5-minute quadrangle of the middle row. The third subarea consists of the remaining five 2.5-minute quadrangles (two in the middle row and three in the bottom row). All three subareas were digitized using the corner ticks, and polygons of the closed areas were generated. The sum of the areas of the three-subarea polygons was compared to the area of the polygon generated from the 7.5-minute test area. The values of the areas were equivalent.

Third, the location of the basin outlet and inclusion of all tributary areas were assured by comparing the drainage areas computed from the digitized topographic quadrangles to the previously published drainage areas. Digitized drainage basins were reviewed if the drainage areas differed by 1 percent or greater from the previously published drainage areas. Of the 1,164 digitized drainage basins for which previously published drainage areas are available, 549 drainage areas differed by 1 percent or greater from the previously published values. Of these 549 drainage areas, 283 were less than the previously

published drainage areas, and the remaining 266 were greater than the previously published drainage areas. Many of the paper maps containing the previously delineated divides are lost, and the tabulation of subareas for each map and drainage basin are not readily available; therefore, previously delineated divides and current delineated divides cannot be compared. Because the earlier and current delineation methods are the same and because the planimetered areas and subareas were balanced to maintain the total area of the topographic quadrangle for the previously published drainage areas, it is suspected that the current drainage areas and previously published drainage areas differ because of differences in basin outlet locations and errors in tabulating subareas from individual maps for the previously published drainage areas.

Drainage Areas

Drainage areas were computed for parts of three major river basins in Virginia—the North Atlantic Slope, South Atlantic Slope, and Ohio River Basins. Streams and locations within these basins are listed in downstream order in table 2 at the end of this report. Included in the table are more than 1,600 sites with station-identification numbers, stream names and locations, and current and previously published drainage areas.

Station-identification number—The station-identification number is unique and consists of 8–15 digits. For station numbers that were assigned using the downstream order system, the first two digits, or part number, identify the major river basin. For example, part 01 is assigned to basins in the North Atlantic Slope Basin, part 02 is assigned to basins in the South Atlantic Slope Basin, and part 03 is assigned to basins in the Ohio River Basin. The remaining digits are assigned in downstream order, numerically increasing from the headwaters toward the mouth of the stream.

Stream name and site location—Stream names are the names shown on the most current USGS topographic maps. The site location describes the relation of the basin outlet to a nearby city or town and may include a secondary landmark. The secondary landmark may be a road, dam, or confluence with another stream and is needed to distinguish sites that have

Table 1. Three test-area sizes generated by three area-computation methods.

[dd, degrees; mm, minutes; ss, seconds; mi², square miles]

Test-area location	Boundary				Area-computation method		
	Northern latitude (ddmmss)	Southern latitude (ddmmss)	Western longitude (ddmmss)	Eastern longitude (ddmmss)	Geographical information system (mi ²)	Smithsonian geographical tables (mi ²)	Method of coordinates (mi ²)
North	392230	391500	0772230	0771500	57.76	57.77	57.77
Central	380000	375230	0802230	0801500	58.86	58.86	58.82
South	361500	360730	0794500	0793730	60.21	60.22	60.19

4 Drainage Areas of Selected Streams in Virginia

the same stream name and to locate the site more precisely. The names are not the official names assigned to the related station number by the USGS because of the additional location information given.

Latitude and longitude—Latitude and longitude coordinates are relative to the NAD83, in degrees, minutes, and seconds. The location coordinates are assigned to the data-collection site and represent the most downstream point of the basin. The location coordinates generally do not indicate the exact location of the basin outlet, however, because of map scale, uncertain accuracy when the coordinates were determined, precision limitations, and other operational aspects.

Current drainage area—The current drainage area of a stream is the area that was determined during this study. Drainage area at a specific location is the area measured in a horizontal plane that is enclosed by a topographic divide (U.S. Geological Survey, 1951). Drainage areas were computed in the Albers projection and are presented in square miles. Drainage area values less than 100 mi² are rounded to three significant figures except for areas between 0.10 mi² and 0.99 mi², which are rounded to two significant figures. Drainage areas 100 mi² and greater are rounded to the closest 1 mi². The drainage areas presented in this report for locations in Virginia supersede all previously published drainage areas.

Previously published drainage area—The most recently published drainage areas are listed for comparison. These drainage areas were computed from variously scaled maps (mostly 7.5-minute, 1:24,000 and 1:32,000 scales, and 15-minute, 1:62,500 scale) in the Polyconic projection using published planimetry methods (U.S. Geological Survey, 1951).

Summary

Drainage area is one of the most important factors used in planning, designing, and regulating water-related projects and resources. Consistently determined drainage-area data for more than 1,600 drainage basins in Virginia and surrounding areas are presented. These drainage basins are associated with active and discontinued streamflow-gaging stations, locations where miscellaneous hydrologic data are or have been collected, locations of special investigations, and river confluences. The calculated drainage areas range from 0.004 mi² to 7,866 mi².

A GIS was used to digitize and store data as lines representing drainage divides and as polygons representing the closed drainage basins. Drainage basins were delineated along drainage divides, which are indicated by elevation contours, using digital USGS 7.5-minute, 1:24,000-scale topographic quadrangles. A polygon was generated from the closed boundaries of each basin. Drainage area was computed in square meters and converted to square miles.

Quality assurance was conducted on four aspects of the drainage-area determination process: GIS spatial alignment, GIS spatial integrity, drainage basin delineation and digitiza-

tion, and area computations. GIS spatial alignment was quality assured by locating reference points for every 2.5 minutes of latitude and longitude and comparing these locations to the geographic reference points on the digital topographic quadrangles. Spatial integrity was quality assured by defining topology or spatial rules in the GIS database to control the spatial relation of digitized drainage divides and polygon features. Drainage basin delineation and digitization were quality assured by a second review of the digitized drainage divide. Area computations were quality assured to verify the GIS area-computation method, to test for spatial or computational bias in the GIS-generated polygons, and to confirm location of the basin outlet and inclusion of all tributary areas.

Acknowledgments

The authors thank Karl Huber and the staff at the Virginia Department of Conservation and Recreation for their efforts to delineate and digitize drainage divides throughout Virginia, which served as the basis for this work.

References Cited

- Dupree, J.A., and Litke, D.C., 2005, Drainage area determination using ArcGIS8 and the geodatabase, *in* Char, S.J., and Sieverling, J.B., eds., 2005, Proceedings of the U.S. Geological Survey Fifth Biennial Geographic Information Science Workshop, March 1–5, 2004, Denver, CO: U.S. Geological Survey Scientific Investigations Report 2005–5236, p. 14.
- Environmental Systems Research Institute (ESRI), Inc., 2003, Frequently asked questions—What algorithm is used by ArcGIS to determine a polygon's area?: accessed February 22, 2006, at <http://support.esri.com/index.cfm?fa=knowledgebase.techarticles.articleShow&d=24650>
- Krstolic, J.L., 2006, Drainage basins for Virginia and surrounding areas: U.S. Geological Survey Digital Spatial Data Set, accessed December 18, 2006, at http://water.usgs.gov/lookup/getspatial?OFR2006-1308_Drainage_Basin
- Lindeburg, M.R., 1989 Civil engineering reference manual (5th ed.): Belmont, CA, Professional Publications, variously paged.
- Snyder, J.P., 1982, Map projections used by the U.S. Geological Survey (2d ed.): U.S. Geological Survey Bulletin 1532, 313 p.
- U.S. Geological Survey, 1951, Interagency coordination of drainage area data—Notes on hydrologic activities: U.S. Geological Survey Bulletin 4, 48 p.
- Woodward, R.S., 1929, Smithsonian geographical tables (3d ed.): Washington, DC, Smithsonian Institution, 182 p.

Table 2. Drainage areas of streams tributary to the North Atlantic Slope, South Atlantic Slope, and Ohio River Basins in and around Virginia.

[dd, degrees; mm, minutes; ss, seconds; mi², square miles; --, not determined; *, previous site location]

Station identification number	Stream name and location	Latitude (ddmmss)	Longitude (ddmmss)	Drainage area	
				Current (mi ²)	Previous (mi ²)
01484740	Little Mosquito Creek tributary below wastewater outfall near Wattsville, Va.	375642	0752841	0.15	--
01484750	Assawoman Creek at Route 695 near Temperanceville, Va.	375338	0753144	2.85	2.80
01484755	Whites Creek at Route 679 at Mutton Hunk near Modest Town, Va.	374707	0753526	1.46	1.80
01484760	Ross Branch at Route 605 near Accomac, Va.	374150	0754005	1.21	1.20
01484765	Nickawampus Creek at Route 600 near Melfa, Va.	373811	0754327	1.16	1.20
01484780	Mattawoman Creek tributary at Route 13 near Eastville, Va.	372240	0755518	.16	.30
01484790	Nassawadox Creek at Route 606 near Nassawadox, Va.	373131	0755236	5.21	4.20
01484800	Guy Creek at Route 606 near Nassawadox, Va.	373013	0755221	1.90	1.72
01484820	Taylor Branch (Occohannock Creek) near Painter, Va.	373425	0754826	2.57	2.60
01484830	Pungoteague Creek at Route 178 near Onancock, Va.	374023	0754556	1.07	1.10
01484840	Taylor Creek at Route 180 at Pungoteague, Va.	373720	0754828	2.35	2.60
01484855	North Branch Onancock Creek at Pine Street at Onancock, Va.	374256	0754409	.76	--
01484880	Lee Mont Branch at Route 658 near Lee Mont, Va.	374633	0754056	1.93	2.10
01484885	Katy Young Branch at Route 658 near Parksley, Va.	374751	0754001	3.16	2.70
01484900	Bethel Branch at Route 687 near Bloxom, Va.	375053	0753612	2.05	2.70
01605200	West Strait Creek at wastewater outfall at Monterey, Va.	382457	0793423	1.31	--
01613570	Back Creek at old Route 522 at Gainesboro, Va.	391709	0781550	34.9	34.40
01613590	Isaacs Creek at Route 522 at Gainesboro, Va.	391805	0781649	16.1	15.80
01613900	Hogue Creek at Route 614 near Hayfield, Va.	391252	0781717	15.9	15.00
01613941	Brush Creek at mouth near De Haven, Va.	391951	0781217	23.0	20.80
01614805	Opequon Creek at Route 622 at Opequon, Va.	390926	0781448	2.47	2.47
01614820	Opequon Creek at old Route 628 near Opequon, Va.	390747	0781332	10.6	10.6
01614830	Opequon Creek at Route 11 near Stephens City, Va.	390632	0781218	15.2	15.2
01615000	Opequon Creek above Route 7 near Berryville, Va.	391029	0780442	58.2	57.3
01615000*	Opequon Creek at Route 7 near Berryville, Va.	391042	0780424	58.6	57.4
01615500	Abrams Creek at railroad at Winchester, Va.	390950	0781014	5.89	5.60
01616000	Abrams Creek above Route 659 near Winchester, Va.	391040	0780509	17.0	16.50
01616074	Redbud Run above Fay Spring near Winchester, Va.	391218	0780750	6.13	--
01616100	Dry Marsh Run at Route 645 near Berryville, Va.	391133	0780407	11.0	11.40
01616150	Lick Run at Jordan Springs near Stephenson, Va.	391257	0780455	10.7	--
01616188	Hot Run tributary at Route 11 at Stephenson, Va.	391421	0780629	.50	--
01616190	Hot Run above Clearbrook Run at Stephenson, Va.	391431	0780614	2.24	.14
--	Clearbrook Run at Route 11 at Clearbrook, Va.	391517	0780548	.61	--
01616200	Clearbrook Run above wastewater outfall at Clearbrook, Va.	391506	0780530	.78	1.4
01616300	Opequon Creek at Route 667 near Brucetown, Va.	391553	0780158	143	--

Table 2. Drainage areas of streams tributary to the North Atlantic Slope, South Atlantic Slope, and Ohio River Basins in and around Virginia. — Continued[dd, degrees; mm, minutes; ss, seconds; mi², square miles; --, not determined; *, previous site location]

Station identification number	Stream name and location	Latitude (ddmmss)	Longitude (ddmmss)	Drainage area	
				Current (mi ²)	Previous (mi ²)
01616500	Opequon Creek at Route 9 near Martinsburg, W. Va.	392527	0775616	273	273
--	Opequon Creek at mouth near Falling Waters, W. Va.	393058	0775154	344	--
01620500*	North River above Forest Road near Stokesville, Va.	382015	0791424	--	17.20
01620500	North River above Forest Road near Stokesville, Va.	382006	0791421	17.3	--
01620500*	North River at Forest Road near Stokesville, Va.	382003	0791420	17.3	--
01620690	North River at Route 727 near Bridgewater, Va.	382342	0790154	102	102.
01620800	Briery Branch tributary at Route 257 near Spring Creek, Va.	382645	0790614	.082	--
01620812	Union Springs Run below Union Springs Dam near Rawley Springs, Va.	382815	0790337	5.23	--
01620815	Beaver Creek above tributary near Clover Hill, Va.	382627	0790247	10.5	--
01620820	Beaver Creek tributary at Route 742 near Clover Hill, Va.	382627	0790246	.99	--
01620830	Briery Branch at Route 748 at Spring Creek, Va.	382357	0790123	49.4	--
--	Briery Branch at mouth near Spring Creek, Va.	382342	0790118	49.4	53.01
01620836	Mossy Creek at Route 731 at Mount Solon, Va.	382029	0790501	4.87	--
01620837	Big Spring at Route 731 at Mount Solon, Va.	382039	0790507	.28	--
01620842	Mossy Creek at Route 613 near Mount Solon, Va.	382107	0790256	11.1	--
01620850	Mossy Creek near Spring Creek, Va.	382312	0790051	15.3	--
--	Mossy Creek at mouth near Spring Creek, Va.	382324	0790041	15.6	15.29
01621000	Dry River at Route 847 at Rawley Springs, Va.	383010	0790313	73.0	72.60
01621050	Muddy Creek at Route 726 at Mount Clinton, Va.	382912	0785737	14.3	14.2
01621100*	Muddy Creek at Route 33 at Hinton, Va.	382802	0785830	16.5	--
01621100	Muddy Creek below Route 33 at Hinton, Va.	382758	0785832	16.5	--
01621200	War Branch at Route 33 near Hinton, Va.	382828	0785913	9.73	9.45
01621210	War Branch above mouth at Hinton, Va.	382758	0785836	12.3	--
--	War Branch at mouth at Hinton, Va.	382757	0785832	12.3	--
01621280	Muddy Creek at Route 737 near Hinton, Va.	382555	0785849	31.3	--
--	Muddy Creek at mouth near Dayton, Va.	382537	0785853	31.4	32.85
01621300	Dry River at Route 257 at Bridgewater, Va.	382427	0785832	119	120.
01621305	Dry River at mouth at Bridgewater, Va.	382333	0785850	120	--
01621315	North River at Route 42 at Bridgewater, Va.	382245	0785846	295	300.00
01621320	Long Glade Creek at Route 613 near Moscow, Va.	381743	0790243	3.86	--
01621340	Long Glade Creek at Route 42 at Bridgewater, Va.	382238	0785858	17.8	--
01621360	North River at Route 11 near Mount Crawford, Va.	382043	0785628	323	320.00
01621390	Cooks Creek at Route 11 near Mount Crawford, Va.	382223	0785605	22.4	--
01621400	Blacks Run at Harrisonburg, Va.	382552	0785301	5.44	5.52
01621410	Blacks Run at Route 726 at Harrisonburg, Va.	382519	0785314	10.9	11.2

Table 2. Drainage areas of streams tributary to the North Atlantic Slope, South Atlantic Slope, and Ohio River Basins in and around Virginia. — Continued

[dd, degrees; mm, minutes; ss, seconds; mi², square miles; --, not determined; *, previous site location]

Station identification number	Stream name and location	Latitude (ddmmss)	Longitude (ddmmss)	Drainage area	
				Current (mi ²)	Previous (mi ²)
01621450	Blacks Run tributary 1 at Route 11 near Harrisonburg, Va.	382330	0785504	0.67	0.72
01621470	Blacks Run at Route 704 near Mount Crawford, Va.	382243	0785541	18.8	19.4
--	Blacks Run at mouth near Mount Crawford, Va.	382231	0785600	19.2	19.87
01621500	Cooks Creek at Route 257 at Mount Crawford, Va.	382138	0785602	43.0	42.00
01621600	Pleasant Run near Route 867 at Mount Crawford, Va.	382048	0785531	8.03	--
--	Pleasant Run at mouth near Mount Crawford, Va.	382041	0785530	8.07	8.41
01622000	North River along Route 693 near Burketown, Va.	382025	0785449	375	379.00
01622100	North River tributary at Route 11 near Mount Crawford, Va.	381955	0785619	1.56	1.55
01622220	Middle River tributary near Middlebrook, Va.	380423	0791456	.013	--
0162222990	Middle River tributary 2 near Swoope, Va.	380758	0791329	1.37	1.397
01622230	Middle River below Trimbles Mill near Swoope, Va.	380810	0791305	20.5	20.60
01622300	Buffalo Branch tributary 1 at Route 42 near Augusta Springs, Va.	380942	0791607	.54	.55
01622400	Buffalo Branch tributary 2 at Route 42 near Christian, Va.	381155	0791309	.46	.49
01622468	Jennings Branch at Whites Store above Stoutameyer Branch near Lone Fountain, Va.	381657	0791346	9.35	--
01622470	Jennings Branch at Route 250 at Jennings Gap near Churchville, Va.	381630	0791158	12.7	24.00
01623000	Bell Creek at St. Pauls Chapel near Staunton, Va.	381000	0790734	.67	.61
01623500	Bell Creek along Route 612 near Staunton, Va.	381100	0790704	3.85	3.80
01624000	Bell Creek at Route 732 at Franks Mill near Staunton, Va.	381310	0790634	9.81	9.60
01624155	Moffett Creek at Route 835 near Parnassus, Va.	381543	0790604	13.3	--
01624175	Elk Run at Route 835 near Parnassus, Va.	381545	0790621	8.38	--
--	Elk Run at mouth near Parnassus, Va.	381538	0790609	8.49	8.33
01624225	Moffett Creek at mouth near Staunton, Va.	381440	0790504	26.9	26.73
01624300	Middle River at Route 742 near Verona, Va.	381436	0790207	179	178.00
01624350	Middle River above wastewater outfall above Lewis Creek near Verona, Va.	381125	0785826	196	--
01624500	Lewis Creek above I-81 near Staunton, Va.	380930	0790134	19.2	18.00
01624550	Lewis Creek at Route 612 above mouth near Verona, Va.	381058	0785832	27.3	--
01624800	Christians Creek at Route 794 near Fishersville, Va.	380742	0785940	73.0	70.10
01624880	Meadow Run at wastewater outfall near Hermitage, Va.	380917	0785523	11.9	--
--	Christians Creek at mouth near New Hope, Va.	381138	0785604	107	107.31
01624940	Middle River tributary 3 at Mount Sidney, Va.	381453	0785736	1.45	1.8
01624960	Polecat Draft at Route 608 near Piedmont, Va.	381342	0785301	5.49	--
--	Polecat Draft at mouth near Piedmont, Va.	381345	0785306	5.51	5.61
01625000	Middle River at Route 769 near Grottoes, Va.	381542	0785143	373	375.00
--	Middle River at mouth near Grottoes, Va.	381641	0785115	374	376.50
01625200	Mill Creek at Route 671 near Port Republic, Va.	381859	0784906	14.4	--

Table 2. Drainage areas of streams tributary to the North Atlantic Slope, South Atlantic Slope, and Ohio River Basins in and around Virginia. — Continued[dd, degrees; mm, minutes; ss, seconds; mi², square miles; --, not determined; *, previous site location]

Station identification number	Stream name and location	Latitude (ddmmss)	Longitude (ddmmss)	Drainage area	
				Current (mi ²)	Previous (mi ²)
01625500	North River at Route 659 at Port Republic, Va.	381750	0784836	819	804.00
--	North River at mouth at Port Republic, Va.	381747	0784828	819	823.05
01625700	Poor Creek near Greenville, Va.	375922	0790902	3.31	--
01625847	South River at wastewater outfall at Stuarts Draft, Va.	380107	0790107	52.1	52.47
01625900	Back Creek at Route 624 at Lyndhurst, Va.	380144	0785557	40.8	41.20
--	Back Creek at mouth near Lyndhurst, Va.	380221	0785606	41.6	41.96
01626000	South River at Route 664 near Waynesboro, Va.	380327	0785429	127	127.00
01626500	South River at Lyndhurst Road at Waynesboro, Va.	380340	0785349	133	133.00
01626575	Jones Hollow Run at Hunter Street at Waynesboro, Va.	380345	0785223	5.20	--
01626850	South River at Hopeman Parkway near Dooms, Va.	380519	0785237	148	149.00
01626900	Sawmill Run at Route 611 near Dooms, Va.	380546	0784837	3.62	3.62
01626952	Porterfield Run near Crimora, Va.	380804	0785159	4.87	4.79
01627000	Mine Branch at Route 612 near Crimora, Va.	380836	0784853	1.25	1.26
01627100	Meadow Run at Fire Road near Crimora, Va.	380929	0784837	3.44	3.45
01627300	South River tributary at Route 340 near Harriston, Va.	381210	0785009	2.22	2.41
01627400	Paine Run below Route 614 near Harriston, Va.	381154	0784732	4.88	4.92
01627500	South River at Route 778 at Harriston, Va.	381307	0785012	212	212.00
01628000	South River at Route 659 at Port Republic, Va.	381742	0784835	234	248.00
--	South River at mouth at Port Republic, Va.	381745	0784829	234	234.37
01628050	Madison Run above White Oak Run near Grottoes, Va.	381505	0784449	1.98	2.00
01628060	White Oak Run above mouth near Grottoes, Va.	381501	0784456	1.95	1.94
01628080	Madison Run along Madison Run Road near Grottoes, Va.	381524	0784605	5.77	5.78
01628150	Deep Run above Route 708 near Grottoes, Va.	381623	0784535	1.18	1.17
01628250	South Fork Shenandoah River at Route 708 at Lynnwood, Va.	381846	0784612	1069	1070.00
01628300	Lower Lewis Run at Fire Road near Lynnwood, Va.	381806	0784401	1.12	1.19
01628320	Lower Lewis Run tributary at Fire Road near Lynnwood, Va.	381803	0784419	.096	.18
01628350	Upper Lewis Run at Fire Road near Lynnwood, Va.	381735	0784454	1.57	1.58
01628500	South Fork Shenandoah River below Lower Lewis Run near Lynnwood, Va.	381921	0784517	1079	1084.00
01628530	Hangman Run at Fire Road near Rocky Bar, Va.	381842	0784331	.45	.44
01628585	Cub Run at Route 33 at Penn Laird, Va.	382317	0784817	14.2	--
01628590	Cub Run tributary 2 above wastewater outfall at Penn Laird, Va.	382243	0784820	.73	--
01628600	Cub Run tributary at Route 33 at Montevideo, Va.	382215	0784659	.49	.42
01628630	Cub Run at Route 650 at Rocky Bar near Island Ford, Va.	382021	0784325	26.8	26.84
01628700	Twomile Run at Park Road near McGaheysville, Va.	382004	0784019	2.17	2.17
01628750	Walls Run above Route 754 near Rocky Bar, Va.	382123	0783946	.60	.60

Table 2. Drainage areas of streams tributary to the North Atlantic Slope, South Atlantic Slope, and Ohio River Basins in and around Virginia. — Continued

[dd, degrees; mm, minutes; ss, seconds; mi², square miles; --, not determined; *, previous site location]

Station identification number	Stream name and location	Latitude (ddmmss)	Longitude (ddmmss)	Drainage area	
				Current (mi ²)	Previous (mi ²)
01628900	Hawksbill Creek tributary at Route 626 near Swift Run, Va.	382047	0783434	1.32	1.32
01628910	West Swift Run at Route 628 at Swift Run, Va.	382155	0783446	.95	.96
01629000	Elk Run below railroad at Elkton, Va.	382422	0783731	15.2	17.00
01629070	Quail Run at Route 602 near Elkton, Va.	382427	0784042	3.78	--
01629120	East Branch Naked Creek along East Branch Naked Creek Trail near Jollett, Va.	382807	0782949	4.63	4.58
01629130	Big Creek at Route 759 near Jollett, Va.	382737	0782934	2.34	2.43
01629150	South Branch Naked Creek below Big Ugly Branch near Furnace, Va.	382534	0783250	8.73	8.72
01629400	South Fork Shenandoah River tributary near Luray, Va.	383835	0783319	.66	.54
01629500	South Fork Shenandoah River at Route 211 near Luray, Va.	383846	0783205	1372	1377.00
01629920	Little Hawksbill Creek tributary at Big Fill Hollow near Ida, Va.	383323	0782554	.80	.78
01629935	Little Hawksbill Creek at Route 626 near Stanley, Va.	383409	0782812	5.63	--
01629945	Chub Run near Stanley, Va.	383431	0782731	3.00	3.16
0162994750	Hawksbill Creek at Route 629 near Luray, Va.	383740	0782806	29.0	--
01629950	East Hawksbill Creek along Route 629 at Ida, Va.	383453	0782451	4.06	4.03
01629975	East Hawksbill Creek at Route 642 near Luray, Va.	383840	0782707	14.3	--
01629980	East Hawksbill Creek near Luray, Va.	383855	0782713	16.0	--
01630000	Hawksbill Creek along Route 340 near Luray, Va.	384111	0782719	51.6	52.00
01630100	South Fork Dry Run at Route 696 near Fairview, Va.	383737	0782322	1.50	1.53
01630200	North Fork Dry Run at Route 669 near Thornton Gap, Va.	383841	0782208	2.16	2.15
01630540	Hawksbill Creek at Route 648 at Springfield, Va.	384229	0782723	68.2	--
01630542	Pass Run at Route 669 near Thornton Gap, Va.	383905	0782113	2.05	2.00
01630543	Rocky Branch at Route 612 near Thornton Gap, Va.	384106	0782109	2.75	2.76
01630544	Pass Run at mouth near Springfield, Va.	384230	0782721	20.7	--
01630585	Jeremys Run at Route 611 near Oak Hill, Va.	384318	0782314	9.73	9.72
01630620	Overall Run off Overall Run Trail near Bentonville, Va.	384818	0782033	4.40	4.41
01630649	Phils Arm Run above Route 631 near Browntown, Va.	384734	0781428	.97	.98
01630650	Phils Arm Run tributary at mouth near Browntown, Va.	384733	0781425	.74	.38
01630652	Phils Arm Run at Route 631 near Browntown, Va.	384745	0781422	1.76	1.76
01630660	Smith Creek above Route 634 near Browntown, Va.	384823	0781154	.78	.78
01630670	Greasy Run along Route 631 near Browntown, Va.	384717	0781602	1.80	1.70
01630680	Lands Run at Lands Run Road near Browntown, Va.	384920	0781221	1.60	1.38
01630700	Gooney Run at Route 622 near Glen Echo, Va.	385006	0781355	20.5	20.60
01631000	South Fork Shenandoah River below Route 619 at Front Royal, Va.	385450	0781239	1634	1642.00
--	South Fork Shenandoah River at mouth at Front Royal, Va.	385638	0781119	1650	1676.80
01631500	North Fork Shenandoah River at Route 917 at Fulks Run, Va.	384018	0785546	106	106.00

Table 2. Drainage areas of streams tributary to the North Atlantic Slope, South Atlantic Slope, and Ohio River Basins in and around Virginia. — Continued[dd, degrees; mm, minutes; ss, seconds; mi², square miles; --, not determined; *, previous site location]

Station identification number	Stream name and location	Latitude (ddmmss)	Longitude (ddmmss)	Drainage area	
				Current (mi ²)	Previous (mi ²)
--	North Fork Shenandoah River above Little Dry River at Fulks Run, Va.	383943	0785522	108	--
01632000	North Fork Shenandoah River above Route 259 at Cootes Store, Va.	383813	0785110	210	210.00
01632080	Linville Creek at Route 786 at Broadway, Va.	383622	0784812	45.7	42.30
01632082	Linville Creek below Route 786 at Broadway, Va.	383624	0784812	45.7	45.50
01632300	Long Meadow (Long Glade) at Route 259 near Broadway, Va.	383443	0784539	7.94	8.15
01632700	Holmans Creek below Lake Wunder near Forestville, Va.	384257	0784536	5.38	--
01632800	North Fork Shenandoah River at Route 11 near Mount Jackson, Va.	384350	0783841	355	360
01632815	Smith Creek near Harrisonburg, Va.	382848	0784632	6.04	6.06
01632825	Fridley Run at Fridley Gap near Lacy Spring, Va.	382937	0784209	1.44	--
01632833	Mountain Run at Route 620 near Lacy Spring, Va.	382958	0784422	4.93	--
01632840	Smith Creek at Route 717 near Lacey Spring, Va.	383218	0784502	21.3	21.30
01632870	War Branch at Athlone near Tenth Legion, Va.	383208	0784221	3.11	3.75
01632890	Smith Creek at Route 794 near Lacey Spring, Va.	383651	0784020	74.2	72.7
01632900	Smith Creek at Route 616 near New Market, Va.	384136	0783834	93.6	93.20
--	Smith Creek at mouth near Mount Jackson, Va.	384341	0783759	105	104.92
01632950	Crooked Run tributary at Route 42 near Conicville, Va.	384755	0784324	.34	.31
01632970	Crooked Run at Route 263 near Mount Jackson, Va.	384544	0784105	6.60	6.49
01633000	North Fork Shenandoah River at Route 698 at Mount Jackson, Va.	384444	0783820	508	506.00
01633100	Stony Creek tributary at Route 263 at Orkney Springs, Va.	384747	0784842	1.01	--
--	Riles Run above Mikes Run near Conicville, Va.	385039	0784228	5.25	--
01633475	Riles Run at Route 703 near Conicville, Va.	385039	0784228	6.13	5.65
01633485	Stony Creek along Route 675 near Liberty Furnace, Va.	385341	0783956	56.5	57.00
01633487	Stony Creek tributary at Route 675 near Liberty Furnace, Va.	385344	0784002	.79	.79
01633500	Stony Creek along Route 675 at Columbia Furnace, Va.	385155	0783744	77.5	79.40
01633510	Swover Creek at Route 42 near Conicville, Va.	385029	0784038	3.21	3.26
01633540	Stony Creek at Route 11 at Edinburg, Va.	384915	0783403	108	104.
01633570	North Fork Shenandoah River below Stony Creek near Edinburg, Va.	384934	0783202	649	--
01633650	Pughs Run at Route 623 near Woodstock, Va.	385548	0783242	3.43	3.66
01633700	Pughs Run tributary at Route 623 near Columbia Furnace, Va.	385617	0783121	.41	.56
01633730	Toms Brook at Route 11 at Toms Brook, Va.	385642	0782631	9.43	9.35
01633731	Toms Brook at Route 653 at Toms Brook, Va.	385636	0782612	9.94	--
01633735	Toms Brook below Route 645 near Toms Brook, Va.	385543	0782536	10.7	--
01633744	Jordon Run at Route 645 near Toms Brook, Va.	385542	0782552	5.32	--
01633745	Toms Brook at Route 747 near Toms Brook, Va.	385535	0782529	16.3	16.2
01634000	North Fork Shenandoah River at Route 55 near Strasburg, Va.	385836	0782010	770	768.00

Table 2. Drainage areas of streams tributary to the North Atlantic Slope, South Atlantic Slope, and Ohio River Basins in and around Virginia. — Continued

[dd, degrees; mm, minutes; ss, seconds; mi², square miles; --, not determined; *, previous site location]

Station identification number	Stream name and location	Latitude (ddmmss)	Longitude (ddmmss)	Drainage area	
				Current (mi ²)	Previous (mi ²)
01634340	Cedar Creek near Lebanon Church, Va.	390453	0782529	55.9	50.10
01634500	Cedar Creek above Route 628 near Winchester, Va.	390452	0781946	102	103
01635005	Fawcett Run below Marlboro Spring at Marlboro, Va.	390458	0781921	7.27	7.24
01635008	Fawcett Run above mouth at Marlboro, Va.	390444	0781935	7.39	7.38
01635045	Buffalo Marsh Run at Route 627 near Middletown, Va.	390334	0781816	6.79	5.27
01635090	Cedar Creek above Route 11 near Middletown, Va.	390024	0781859	154	153
01635100	Cedar Creek at Route 635 near Strasburg, Va.	385927	0781941	156	157.00
01635200	North Fork Shenandoah River tributary 1 at Route 55 near Waterlick, Va.	385825	0781829	.38	.48
01635250	Passage Creek at Route 776 near Detrick, Va.	384749	0782741	31.6	31.70
01635300	Peters Mill Run along Route 758 near Detrick, Va.	385148	0782624	4.21	4.22
01635360	Mill Run near Detrick, Va.	385216	0782133	1.17	1.17
01635365	Shelter Run near Detrick, Va.	385213	0782136	.16	.14
01635500	Passage Creek above Route 55 near Buckton, Va.	385729	0781600	86.5	87.80
--	Passage Creek at mouth near Waterlick, Va.	385836	0781613	87.8	88.83
01636000	North Fork Shenandoah River along railroad near Riverton, Va.	385730	0781324	1032	1040.00
--	North Fork Shenandoah River at mouth at Riverton, Va.	385641	0781120	1034	1033.09
01636200	Shenandoah River at Riverton, Va.	385638	0781118	2684	2694.00
01636202	Happy Creek tributary at Route 604 near Glen Echo, Va.	385117	0781048	1.41	1.51
01636210	Happy Creek at Kerfoot Avenue at Front Royal, Va.	385420	0781109	14.0	14.00
--	Happy Creek at mouth at Front Royal, Va.	385637	0781118	22.1	21.72
01636220	Crooked Run near Nineveh, Va.	390215	0780929	3.30	--
01636225	Crooked Run tributary at Route 636 near Nineveh, Va.	390256	0781028	2.22	--
01636228	Crooked Run above Route 627 at Cedarville, Va.	385914	0781059	23.0	--
01636240	Crooked Run at Route 340 at Riverton, Va.	385722	0781152	46.9	--
01636242	Crooked Run below Route 340 at Riverton, Va.	385718	0781150	46.9	--
--	Crooked Run at mouth near Front Royal, Va.	385725	0781058	47.2	47.55
01636266	Manassas Run at Route 79 near Linden, Va.	385448	0780557	5.54	--
0163626650	Manassas Run at Route 645 near Front Royal, Va.	385603	0780741	11.2	11.2
01636270	Borden Marsh Run at Route 624 near Boyce, Va.	390009	0780550	8.56	8.71
01636295	Roseville Run at wastewater outfall below Route 340 at Boyce, Va.	390518	0780350	2.38	--
01636300	Westbrook Run at Route 340 near Boyce, Va.	390422	0780529	1.52	1.40
01636316	Spout Run at Route 621 near Millwood, Va.	390401	0780013	21.4	21.3
01636345	Wheat Spring Branch tributary 1 near Berryville, Va.	390726	0775453	.63	.61
--	Shenandoah River at Va.-W. Va. state line near Berryville, Va.	391112	0775139	2940	--
01636500	Shenandoah River at Millville, W. Va.	391655	0774721	3041	--

Table 2. Drainage areas of streams tributary to the North Atlantic Slope, South Atlantic Slope, and Ohio River Basins in and around Virginia. — Continued[dd, degrees; mm, minutes; ss, seconds; mi², square miles; --, not determined; *, previous site location]

Station identification number	Stream name and location	Latitude (ddmmss)	Longitude (ddmmss)	Drainage area	
				Current (mi ²)	Previous (mi ²)
--	Shenandoah River at mouth at Harpers Ferry, W. Va.	391921	0774340	3058	--
01636690	Piney Run at Route 671 near Lovettsville, Va.	391839	0774306	13.5	13.70
--	Piney Run at mouth near Lovettsville, Va.	391916	0774249	14.8	14.98
01638350	South Fork Catoctin Creek at Route 698 near Waterford, Va.	391128	0773655	31.6	31.6
01638400	North Fork Catoctin Creek at Route 9 near Hillsboro, Va.	391114	0774050	17.9	17.8
01638420	North Fork Catoctin Creek at Route 681 near Waterford, Va.	391218	0773726	23.1	23.1
01638480	Catoctin Creek at Route 663 at Taylorstown, Va.	391516	0773435	89.5	89.60
01643585	Potomac River tributary 1 above mouth near Lucketts, Va.	391232	0772848	2.89	2.95
01643590	Limestone Branch at Route 15 near Leesburg, Va.	391003	0773209	7.88	7.86
01643600	Limestone Branch tributary 1 at Route 661 near Leesburg, Va.	391027	0773147	6.98	6.82
01643643	Goose Creek at Route 17 at Delaplane, Va.	385451	0775519	44.6	45.60
01643700	Goose Creek at Route 611 near Middleburg, Va.	385911	0774748	122	123.00
01643715	Cromwells Run at Route 50 near Middleburg, Va.	385820	0774726	16.7	--
01643720	Rocky Creek at Route 50 near Middleburg, Va.	385825	0774742	1.68	--
01643800	North Fork Goose Creek at Route 722 near Lincoln, Va.	390438	0774151	24.0	24.00
01643805	North Fork Goose Creek at Route 729 near Lincoln, Va.	390420	0774102	38.1	38.2
01643880	Beaverdam Creek at Route 734 near Mountville, Va.	390215	0774320	47.2	47.2
01643950	Goose Creek at Route 15 at Oatlands, Va.	390138	0773716	271	276.00
01643988	Little River at Route 15 near Oatlands, Va.	390025	0773652	47.7	47.70
01643990	Howsers Branch at private road near Oatlands, Va.	390012	0773629	6.09	5.98
01644000	Goose Creek above Route 621 near Leesburg, Va.	390110	0773439	332	332.00
01644010	Black Branch tributary 1 at mouth near Watson, Va.	390027	0773440	.16	.15
01644015	Black Branch below tributary 1 near Watson, Va.	390028	0773440	.83	.86
01644020	Black Branch tributary 2 near Watson, Va.	390044	0773444	.17	.17
01644025	Black Branch below Route 860 near Watson, Va.	390104	0773438	1.26	1.25
01644090	Goose Creek above Sycolin Creek near Leesburg, Va.	390410	0773111	348	--
01644100	South Fork Sycolin Creek at Route 15 near Leesburg, Va.	390415	0773634	2.06	2.05
01644110	Sycolin Creek above mouth near Leesburg, Va.	390420	0773108	17.0	--
--	Sycolin Creek at mouth near Leesburg, Va.	390412	0773107	17.1	17.30
01644120	Tuscarora Creek above wastewater outfall near Leesburg, Va.	390528	0773207	12.1	--
01644133	Goose Creek at Route 7 near Ashburn, Va.	390508	0773041	381	--
01644200	Lenah Run (Broad Run) at Route 50 at Lenah, Va.	385706	0773436	1.11	1.09
01644250	South Fork Broad Run at Route 50 near Arcola, Va.	385630	0773304	3.88	4.12
01644255	South Fork Broad Run at Route 621 at Arcola, Va.	385710	0773208	5.28	5.31
01644277	Beaverdam Run at Route 607 near Ashburn, Va.	390223	0772658	11.3	11.20

Table 2. Drainage areas of streams tributary to the North Atlantic Slope, South Atlantic Slope, and Ohio River Basins in and around Virginia. — Continued[dd, degrees; mm, minutes; ss, seconds; mi², square miles; --, not determined; *, previous site location]

Station identification number	Stream name and location	Latitude (ddmmss)	Longitude (ddmmss)	Drainage area	
				Current (mi ²)	Previous (mi ²)
01644280	Broad Run at Route 7 near Leesburg, Va.	390247	0772556	76.1	76.10
01644283	Potomac River tributary 2 above mouth near Sterling, Va.	390343	0772406	3.42	3.47
01644290	Stave Run at parking lot road at Reston, Va.	385657	0772217	.069	.05
01644291	Stave Run below parking lot road near Reston, Va.	385656	0772215	.085	.08
01644295	Smilax Branch at Dulles Airport Road at Reston, Va.	385710	0772203	.33	.32
01644300	Sugarland Run at Route 606 at Herndon, Va.	385800	0772216	3.39	3.36
01644370	Sugarland Run at Route 7 near Dranesville, Va.	390047	0772211	13.4	13.40
01645700	Difficult Run at Route 665 near Fairfax, Va.	385229	0772017	4.36	4.29
01645725	Difficult Run at Vale Road near Vienna, Va.	385411	0771907	10.1	10.40
01645750	South Fork Little Difficult Run at Fox Mill Road near Fairfax, Va.	385352	0772111	1.58	1.59
01645784	Snakeden Branch at Soapstone Drive at Reston, Va.	385548	0772042	.79	.79
01645800	Piney Branch above railroad at Vienna, Va.	385406	0771556	.27	.29
01645900	Colvin Run at Hunter Mill Road at Reston, Va.	385756	0771835	5.04	5.09
01645950	Piney Run at Leesburg Pike at Reston, Va.	385849	0771908	2.05	2.06
01645975	Rocky Run at Towlston Road near Great Falls, Va.	385816	0771448	3.19	3.22
01646000	Difficult Run below Route 193 near Great Falls, Va.	385833	0771445	57.8	57.90
01646200	Scott Run at Old Georgetown Pike near McLean, Va.	385732	0771220	4.67	4.69
01646300	Dead Run at Benjamin Street near McLean, Va.	385719	0771050	1.89	1.94
01646600	Pimmit Run at Great Falls Road near Falls Church, Va.	385441	0771104	2.88	2.87
01646700	Pimmit Run below Kirby Road at Arlington, Va.	385610	0770821	8.26	8.12
01646750	Little Pimmit Run tributary above Little Falls Road at Arlington, Va.	385418	0770816	.43	.41
01646755	Little Pimmit Run tributary at Little Falls Road at Arlington, Va.	385425	0770819	.54	.49
01646800	Little Pimmit Run at Route 689 at Arlington, Va.	385522	0770842	2.31	2.31
01652400	Long Branch at South Carlyn Springs Road at Arlington, Va.	385131	0770736	.94	.94
01652430	Doctors Run at 8th Street at Arlington, Va.	385142	0770608	.93	.90
01652470	Lucky Run at Dinwiddie Street at Arlington, Va.	385033	0770615	1.30	1.22
01652500	Fourmile Run at Shirlington Road at Alexandria, Va.	385035	0770508	12.6	13.80
01652500*	Fourmile Run below railroad at Alexandria, Va.	385037	0770445	13.7	14.4
01652507	Fourmile Run at East Glebe Road at Alexandria, Va.	385037	0770438	14.1	--
01652600	Holmes Run at Route 50 at Merrifield, Va.	385157	0771244	2.73	2.70
01652610	Holmes Run at Sleepy Hollow Road near Annandale, Va.	385047	0771027	7.13	7.10
01652620	Tripps Run above South Washington Street at Falls Church, Va.	385246	0771044	1.92	1.78
01652645	Tripps Run tributary at Holmes Run Road near Falls Church, Va.	385154	0771015	.51	.50
01652650	Tripps Run at Sleepy Hollow Road near Falls Church, Va.	385137	0770956	4.63	4.55
01652670	Holmes Run below Lake Barcroft near Alexandria, Va.	385027	0770838	14.8	14.70

Table 2. Drainage areas of streams tributary to the North Atlantic Slope, South Atlantic Slope, and Ohio River Basins in and around Virginia. — Continued[dd, degrees; mm, minutes; ss, seconds; mi², square miles; --, not determined; *, previous site location]

Station identification number	Stream name and location	Latitude (ddmmss)	Longitude (ddmmss)	Drainage area	
				Current (mi ²)	Previous (mi ²)
01652688	Holmes Run along Holmes Run Parkway at Alexandria, Va.	384855	0770712	18.4	--
01652690	Holmes Run above Route 236 at Alexandria, Va.	384844	0770650	18.8	18.90
01652710	Backlick Run at Leesville Boulevard at Springfield, Va.	384805	0771113	2.08	2.02
01652810	Turkeycock Run at Shirley Route at Alexandria, Va.	384836	0770905	2.29	2.26
01652900	Backlick Run at Van Dorn Street at Alexandria, Va.	384812	0770802	12.6	--
01652910	Backlick Run below South Van Dorn Street at Alexandria, Va.	384811	0770740	13.5	13.40
01653000	Cameron Run below railroad at Alexandria, Va.	384823	0770635	33.9	33.70
01653000*	Cameron Run above Oak Park at Alexandria, Va.	384814	0770608	34.1	--
01653007	Pike Branch at Telegraph Road at Alexandria, Va.	384709	0770534	1.67	1.64
01653210	Pike Branch at Route 611 at Alexandria, Va.	384735	0770501	2.59	2.65
01653410	Taylor Run above Route 236 at Alexandria, Va.	384830	0770430	1.00	1.02
01653447	Penn Daw outfall at Huntington Avenue at Alexandria, Va.	384719	0770353	.79	.82
01653700	Little Hunting Creek at Route 1 at Gum Springs, Va.	384421	0770519	1.97	1.78
01653800	Dogue Creek at Route 1 near Accotink, Va.	384308	0770743	10.8	10.60
01653840	Dogue Creek East tributary at Route 1 near Accotink, Va.	384320	0770719	1.83	1.47
01653900	Accotink Creek at Pickett Street at Fairfax, Va.	385139	0771616	6.87	6.80
01653925	Bear Branch at Arlington Boulevard near Vienna, Va.	385154	0771519	2.07	2.04
01653950	Long Branch at Lee Route at Vienna, Va.	385223	0771433	1.21	1.18
01654000	Accotink Creek above Route 620 near Annandale, Va.	384846	0771342	23.9	23.50
01654000*	Accotink Creek at Route 620 near Annandale, Va.	384841	0771348	23.9	23.6
01654500	Long Branch (Little Run) at Route 620 near Annandale, Va.	384839	0771406	3.72	3.71
01654700	Calamo Branch (Creek) tributary at Tanager Street at Springfield, Va.	384628	0771123	.28	.31
01655000	Accotink Creek at Army Engineer Road near Accotink Station, Va.	384515	0771208	37.1	37.00
01655140	Accotink Creek at Telegraph Road near Accotink, Va.	384313	0771127	40.5	--
01655162	Long Branch at Route 611 at Pohick Estates, Va.	384323	0771108	4.65	--
01655170	Accotink Creek at Route 1 at Accotink, Va.	384228	0771008	48.5	--
01655310	Rabbit Branch at Guinea Road near Burke, Va.	384806	0771718	4.18	3.81
01655320	Sideburn Branch at Guinea Road at Fairfax Station, Va.	384754	0771814	1.63	1.63
01655330	Sideburn Branch at Poburn Road near Fairfax, Va.	384746	0771806	2.79	2.79
01655340	Pohick Creek tributary at Keene Mill Road near Burke, Va.	384624	0771506	.33	.34
01655350	Pohick Creek at Hooes Road near Springfield, Va.	384526	0771336	15.2	15.00
01655360	Sangster Branch at Lee Chapel Road near Burke, Va.	384531	0771624	.14	.15
01655370	Middle Run at Route 640 near Lorton, Va.	384501	0771402	3.64	3.56
01655380	South Run at Hooes Road near Lorton, Va.	384411	0771509	6.30	6.54
01655390	Pohick Creek at Lorton Road at Lorton, Va.	384214	0771251	31.3	31.00

Table 2. Drainage areas of streams tributary to the North Atlantic Slope, South Atlantic Slope, and Ohio River Basins in and around Virginia. — Continued

[dd, degrees; mm, minutes; ss, seconds; mi², square miles; --, not determined; *, previous site location]

Station identification number	Stream name and location	Latitude (ddmmss)	Longitude (ddmmss)	Drainage area	
				Current (mi ²)	Previous (mi ²)
01655395	Pohick Creek at Route 1 at Pohick, Va.	384204	0771235	31.7	--
01655500	Cedar Run at Route 672 near Warrenton, Va.	384425	0774715	13.1	12.30
01655925	Licking Run at Route 616 near Calverton, Va.	383715	0773929	23.5	--
01656000	Cedar Run at Route 806 near Catlett, Va.	383812	0773730	93.4	93.40
01656100	Cedar Run at Route 611 near Aden, Va.	383658	0773315	155	155.00
01656102	Goslin Run at Marine Road near Aden, Va.	383640	0773303	4.82	4.64
01656120	Cedar Run at Route 646 near Aden, Va.	383829	0773045	175	--
01656200	Broad Run at Route 17 near Warrenton, Va.	384825	0774846	2.55	2.94
01656500	Broad Run at Route 29 at Buckland, Va.	384650	0774021	50.2	50.50
01656600	Broad Run tributary 1 at Route 29 at Buckland, Va.	384650	0774014	.83	.79
01656645	Rocky Branch tributary at Route 619 near Gainesville, Va.	384543	0773456	2.32	2.32
01656650	Broad Run at Route 619 near Bristow, Va.	384456	0773349	89.6	89.60
01656655	Kettle Run at Route 708 near Nokesville, Va.	384328	0773631	12.5	11.90
01656659	Kettle Run at Route 619 at Brentsville, Va.	384158	0773041	25.2	25.00
01656670	Broad Run at Route 692 at Brentsville, Va.	384132	0772941	137	137.00
01656700	Occoquan River (Creek) below Route 234 near Manassas, Va.	384219	0772645	343	343.00
01656701	Purcell Branch at wastewater outfall near Canova, Va.	384002	0772608	.24	--
01656705	Black Branch at Route 15 near Haymarket, Va.	385446	0773742	2.81	3.05
01656715	Chestnut Lick at Route 701 near Catharpin, Va.	385317	0773536	11.1	11.10
01656725	Bull Run at Route 705 near Catharpin, Va.	385321	0773413	25.7	25.80
01656735	Bull Run at Route 659 near Catharpin, Va.	385057	0773246	36.7	36.90
01656743	Lick Branch at Route 705 at Catharpin, Va.	385058	0773423	3.04	3.06
01656750	Little Bull Run at Route 234 near Bull Run, Va.	385032	0773221	27.3	27.20
01656768	Flat Branch at Route 234 near Manassas, Va.	384622	0772956	1.02	1.10
01656800	Cub Run at Route 50 near Chantilly, Va.	385430	0772800	7.75	7.13
01656850	Cain Branch at Route 50 near Chantilly, Va.	385408	0772705	1.51	1.67
01656920	Flatlick Branch at Braddock Road near Chantilly, Va.	385203	0772750	7.48	7.41
01656930	Elklick Run at Route 609 near Chantilly, Va.	385216	0772939	10.8	10.90
01656940	Cub Run at Route 29 near Centreville, Va.	384959	0772749	39.6	39.60
01656960	Cub Run at Route 658 near Bull Run, Va.	384916	0772756	49.7	49.90
01657000	Bull Run at Route 616 near Manassas, Va.	384752	0772729	146	148.00
01657000*	Bull Run at old Route 616 near Manassas, Va.	384750	0772727	147	148.
01657020	Bull Run at Route 28 near Manassas Park, Va.	384812	0772658	147	148.00
01657245	Russia Branch at Route 616 at Manassas, Va.	384542	0772636	1.47	1.47
01657300	Popes Head Creek at Route 654 near Fairfax Station, Va.	384857	0772015	3.59	3.64

Table 2. Drainage areas of streams tributary to the North Atlantic Slope, South Atlantic Slope, and Ohio River Basins in and around Virginia. — Continued[dd, degrees; mm, minutes; ss, seconds; mi², square miles; --, not determined; *, previous site location]

Station identification number	Stream name and location	Latitude (ddmmss)	Longitude (ddmmss)	Drainage area	
				Current (mi ²)	Previous (mi ²)
01657400	Popes Head Creek at Route 645 at Clifton, Va.	384654	0772317	17.2	17.20
01657415	Bull Run above Yates Ford near Clifton, Va.	384559	0772451	185	185.00
0165741650	Bull Run above Occoquan Reservoir near Clifton, Va.	384501	0772400	190	185.00
01657435	Wolf Run at Route 643 near Clifton, Va.	384409	0772150	5.39	5.39
01657500	Occoquan River (Creek) near Occoquan, Va.	384220	0771934	570	570.00
01657600	Sandy Run at Henderson Road near Fairfax Station, Va.	384453	0771922	2.35	2.35
01657655	Hooes Run above Route 641 near Occoquan, Va.	384048	0771724	3.92	3.97
01657800	Giles Run at Route 1 near Woodbridge, Va.	384048	0771335	4.52	4.54
01657850	Neabsco Creek at Delaney Road at Dale City, Va.	383843	0772049	6.07	6.11
01657859	Neabsco Creek at Route 1 near Dumfries, Va.	383639	0771725	15.6	--
01657885	Neabsco Creek tributary at Telegraph Road near Dale City, Va.	383841	0771714	.96	.91
01657890	Neabsco Creek tributary at Route 638 near Dale City, Va.	383713	0771634	3.38	3.33
01657895	Powells Creek at Route 643 near Dale City, Va.	383700	0772218	7.92	7.93
01658425	Quantico Creek tributary 3 along Farms Trail near Independent Hill, Va.	383627	0772358	.66	.65
01658430	Quantico Creek along Farms Trail near Independent Hill, Va.	383626	0772356	2.93	2.92
01658450	Quantico Creek at Burma Fire Road near Independent Hill, Va.	383609	0772208	4.71	4.86
01658460	Quantico Creek at Camp 4 near Dumfries, Va.	383523	0772125	5.91	5.92
01658475	Quantico Creek above pyrite mine near Dumfries, Va.	383435	0772104	6.78	6.80
01658480	Quantico Creek at pyrite mine road at Dumfries, Va.	383422	0772050	6.89	6.90
01658500	South Fork Quantico Creek at Route 619 near Independent Hill, Va.	383514	0772543	7.62	7.64
01658530	South Fork Quantico Creek at Mawavi Road near Joplin, Va.	383507	0772445	8.99	9.01
01658540	South Fork Quantico Creek tributary 8 at Camp 2 near Joplin, Va.	383447	0772446	.25	.27
01658550	South Fork Quantico Creek below Camp 5 Lake near Joplin, Va.	383438	0772435	9.57	9.61
01658601	South Fork Quantico Creek tributary 1 at High Meadows Trail near Joplin, Va.	383500	0772312	1.09	1.07
01658602	South Fork Quantico Creek tributary 1 at mouth near Joplin, Va.	383435	0772252	1.33	1.30
01658603	South Fork Quantico Creek below tributary 1 near Joplin, Va.	383434	0772246	12.9	12.90
01658605	South Fork Quantico Creek tributary 2 at mouth near Joplin, Va.	383431	0772230	.47	.45
01658608	South Fork Quantico Creek tributary 4 at mouth near Joplin, Va.	383359	0772151	.14	.11
01658610	South Fork Quantico Creek at Park Road near Joplin, Va.	383403	0772153	14.4	14.50
01658612	South Fork Quantico Creek tributary 3 at mouth near Joplin, Va.	383359	0772151	.17	.18
01658615	Mary Bird Branch at Taylor Farm Road near Joplin, Va.	383536	0772235	.092	.09
01658618	Mary Bird Branch at mouth near Dumfries, Va.	383404	0772138	.80	.79
01658625	South Fork Quantico Creek tributary 5 at Orenda Fire Road near Dumfries, Va.	383349	0772127	.20	.19
01658635	South Fork Quantico Creek tributary 6 at mouth near Dumfries, Va.	383400	0772110	.23	.21
01658650	South Fork Quantico Creek above mouth near Dumfries, Va.	383418	0772056	16.7	16.60

Table 2. Drainage areas of streams tributary to the North Atlantic Slope, South Atlantic Slope, and Ohio River Basins in and around Virginia. — Continued[dd, degrees; mm, minutes; ss, seconds; mi², square miles; --, not determined; *, previous site location]

Station identification number	Stream name and location	Latitude (ddmmss)	Longitude (ddmmss)	Drainage area	
				Current (mi ²)	Previous (mi ²)
01658653	Quantico Creek tributary 1 at private road near Dumfries, Va.	383448	0772036	1.22	1.18
01658698	Little Creek at Mocking Bird Road at Triangle, Va.	383159	0771918	2.06	--
01658705	Little Creek at Geiger Road at Quantico, Va.	383141	0771745	3.28	--
01659000	North Branch Chopawamsic Creek above Marine Road 1 near Independent Hill, Va.	383354	0772533	5.69	5.79
01659500	Middle Branch Chopawamsic Creek above Marine Road near Garrisonville, Va.	383326	0772531	4.46	4.51
01660000	South Branch Chopawamsic Creek below Marine Road 1 near Garrisonville, Va.	383222	0772529	2.46	2.56
01660100	Chopawamsic Creek at Russell Road near Joplin, Va.	383123	0772225	22.1	--
01660110	Chopawamsic Creek at I-95 near Joplin, Va.	383113	0772215	22.6	--
01660360	Cannon Creek near county line near Somerville, Va.	383218	0773256	.90	.831
01660365	Cannon Creek near R6 Pond near Garrisonville Estates, Va.	383058	0773131	4.80	4.83
01660370	Cannon Creek tributary near Garrisonville Estates, Va.	383052	0773026	1.35	1.35
01660375	Cannon Creek below Route 644 near Garrisonville Estates, Va.	383045	0773012	7.94	7.96
01660380	Cannon Creek above mouth near Garrisonville, Va.	382923	0772911	10.2	10.2
01660400	Aquia Creek at Route 641 near Garrisonville, Va.	382925	0772601	35.0	34.90
01660490	Lunga Reservoir at spillway near Garrisonville, Va.	383122	0772749	10.8	--
01660500	Beaverdam Run at Marine Road 2 near Garrisonville, Va.	383025	0772538	13.2	--
01660500*	Beaverdam Run above Marine Road near Garrisonville, Va.	383025	0772545	13.2	12.70
01660670	Accokeek Creek at Route 609 near Brooke, Va.	382238	0772125	17.5	18.00
01660808	Upper Machodoc Creek at Route 616 near Dahlgren, Va.	381857	0770519	25.7	26.20
01660870	Fox Hall Swamp at Route 639 near Potomac Mills, Va.	380924	0765742	2.29	2.28
01661160	Nomini Creek at Route 600 near Neenah, Va.	380228	0764221	10.2	9.99
01661600	Great Wicomico River at Route 604 near Horse Head, Va.	375315	0762659	7.03	6.98
01661800	Bush Mill Stream at Route 601 near Heathsville, Va.	375236	0762941	6.77	6.82
01661820	Indian Creek tributary at Kilmarnock, Va.	374231	0762159	.11	--
01661835	Hickman Run tributary above wastewater outfall at Flint Hill, Va.	384514	0780623	.20	--
01661839	Jordan River at Route 637 near Flint Hill, Va.	384545	0780204	34.1	--
01661840	Rappahannock River at Route 647 near Flint Hill, Va.	384532	0780141	73.9	65.90
01661900	Carter Run off Route 691 near Marshall, Va.	384758	0775208	20.4	19.50
01661995	Carter Run at Route 688 near Jeffersonton, Va.	384157	0775425	55.2	--
01662000	Rappahannock River at Route 211 near Warrenton, Va.	384105	0775414	195	195.00
01662010	Rappahannock River tributary 8 to tributary near Jeffersonton, Va.	383950	0775449	1.20	--
01662050	Great Run tributary to tributary above wastewater outfall at Warrenton, Va.	384300	0774856	.35	--
01662065	Great Run at Route 687 near Turnbull, Va.	383834	0775134	25.1	--
01662100	Hazel River along Hazel River Trail near Nethers, Va.	383654	0781543	5.15	5.15
01662110	Hazel River at Route 231 near Woodville, Va.	383627	0781414	9.85	5.54

Table 2. Drainage areas of streams tributary to the North Atlantic Slope, South Atlantic Slope, and Ohio River Basins in and around Virginia. — Continued[dd, degrees; mm, minutes; ss, seconds; mi², square miles; --, not determined; *, previous site location]

Station identification number	Stream name and location	Latitude (ddmmss)	Longitude (ddmmss)	Drainage area	
				Current (mi ²)	Previous (mi ²)
01662150	Hughes River at Nicholson Hollow Trail near Nethers, Va.	383427	0781748	10.1	9.92
01662156	South Fork Brokenback Run near Nethers, Va.	383400	0781901	1.03	1.02
01662160	Brokenback Run above Hughes River near Nethers, Va.	383416	0781800	4.42	4.30
01662170	Rocky Run at Route 707 at Nethers, Va.	383439	0781656	1.19	1.09
01662190	Ragged Run along Route 645 near Etlan, Va.	383156	0781743	1.23	1.14
01662200	Rosson Hollow Run tributary at Route 646 near Etlan, Va.	383233	0781623	1.06	1.05
01662225	Hughes River at Route 644 near Boston, Va.	383120	0781017	47.8	--
01662235	Hazel River at Route 522 near Boston, Va.	383156	0780713	77.8	--
01662270	Hazel River at Route 729 near Castleton, Va.	383553	0780342	115	--
01662300	Thornton River tributary at Route 211 near Thornton Gap, Va.	384008	0781729	1.37	1.38
01662310	Thornton River above Beech Spring Hollow near Sperryville, Va.	383912	0781622	6.41	6.40
01662320	Thornton River above wastewater outfall at Sperryville, Va.	383929	0781312	10.3	--
01662350	North Fork Thornton River along Forest Road near Sperryville, Va.	384136	0781632	7.31	7.21
01662370	Piney River along Forest Road near Sperryville, Va.	384146	0781529	5.59	5.58
01662400	Thornton River at wastewater outfall at Sperryville, Va.	383925	0781253	31.3	--
01662410	Thornton River at Route 620 at Fletcher Mill near Sperryville, Va.	383848	0781223	32.1	--
01662480	Rush River at Route 622 near Washington, Va.	384429	0781307	2.33	2.34
01662490	Rush River at Route 624 at Washington, Va.	384337	0781012	11.1	11.10
01662500	Rush River at Route 683 (old Route 211) at Washington, Va.	384250	0780904	14.6	14.70
01662600	Rush River tributary at Route 211 near Washington, Va.	384140	0781009	.057	.09
01662800	Battle Run at Route 729 near Laurel Mills, Va.	383920	0780426	25.8	27.60
01663000	Thornton River at Route 729 near Laurel Mills, Va.	383741	0780346	139	142.00
01663500	Hazel River at Route 229 at Rixeyville, Va.	383530	0775754	285	287.00
01663750	Muddy Run at Route 729 near Norman, Va.	383234	0780234	6.33	--
01663830	Muddy Run at Route 625 near Rixeyville, Va.	383343	0775529	28.9	--
01664000	Rappahannock River at Route 29 (Alternate) at Remington, Va.	383150	0774849	619	620.00
01664100	Tinpot Run at Route 15 (Business) at Remington, Va.	383225	0774818	9.63	9.70
01664190	Tinpot Run at Route 651 at Remington, Va.	383142	0774822	12.0	--
--	Tinpot Run at mouth near Remington, Va.	383136	0774841	12.4	12.16
01664500	Rappahannock River at Route 620 at Kellys Ford near Remington, Va.	382838	0774652	641	1092.0
01664690	Browns Run off Route 644 near Elk Run, Va.	383251	0774311	2.51	2.55
01664700	Browns Run at Route 17 near Bealeton, Va.	383237	0774351	7.75	7.54
01664750	Marsh Run at Route 668 near Remington, Va.	383029	0774552	35.9	37.30
01664800	Harpers Run at Route 17 near Morrisville, Va.	383100	0774304	2.32	2.28
01665000	Mountain Run at Route 641 near Culpeper, Va.	382841	0780255	16.1	15.90

Table 2. Drainage areas of streams tributary to the North Atlantic Slope, South Atlantic Slope, and Ohio River Basins in and around Virginia. — Continued[dd, degrees; mm, minutes; ss, seconds; mi², square miles; --, not determined; *, previous site location]

Station identification number	Stream name and location	Latitude (ddmmss)	Longitude (ddmmss)	Drainage area	
				Current (mi ²)	Previous (mi ²)
0166504850	Mountain Run at wastewater outfall near Culpeper, Va.	382745	0775808	39.2	--
01665050	Pony Mountain Branch at Route 3 near Culpeper, Va.	382704	0775723	.28	.30
01665100	Jonas Run at Route 684 near Brandy Station, Va.	382920	0775407	11.5	11.40
01665150	Mountain Run at Route 672 near Kellys Ford near Sumerduck, Va.	382737	0774849	84.0	118.00
01665200	Rock Run tributary 2 at Route 17 near Goldvein, Va.	382745	0774009	1.02	1.00
01665220	Deep Run at Route 615 near Goldvein, Va.	382707	0773745	15.5	15.40
01665228	Deep Run at Route 17 near Goldvein, Va.	382549	0773746	25.7	--
01665260	Rapidan River at Forest Trail near Graves Mill, Va.	382638	0782210	9.74	9.74
01665270	Staunton River at mouth near Graves Mill, Va.	382638	0782211	4.11	4.21
01665285	Rapidan River at Route 662 near Wolftown, Va.	382212	0782152	25.8	--
01665300	Rapidan River at Route 230 near Stanardsville, Va.	382113	0782228	37.6	37.60
01665340	Conway River at Route 667 near Kinderhook, Va.	382459	0782616	9.68	9.66
01665343	Conway River tributary at Route 667 near Kinderhook, Va.	382416	0782621	3.61	3.62
01665400	Conway River at Route 230 near Stanardsville, Va.	381958	0782352	26.0	25.80
01665440	South River at Route 642 above Entry Run near McMullen, Va.	382201	0782737	4.93	4.94
01665450	South River at Route 230 near Stanardsville, Va.	381850	0782544	19.0	18.80
01665500	Rapidan River below Route 29 near Ruckersville, Va.	381650	0782024	115	114.00
01665545	Marsh Run at Route 644 near Eheart, Va.	381400	0781631	9.12	--
01665557	Rapidan River at Route 231 near Somerset, Va.	381353	0781312	162	--
01665577	Blue Run at Route 20 near Somerset, Va.	381324	0781252	26.6	--
01665580	Blue Run at Route 641 near Somerset, Va.	381415	0781156	32.2	--
01665600	Poplar Run at Route 633 near Madison Mills, Va.	381553	0780924	8.81	--
01665630	Rapidan River at Route 15 at Madison Mills, Va.	381648	0780824	238	--
01665650	Rapidan River tributary at Route 634 near Madison Mills, Va.	381644	0780715	2.41	--
01665710	White Oak Canyon tributary at White Oak Canyon Trail near Syria, Va.	383223	0782052	5.50	5.41
01665720	Berry Hollow tributary off Route 600 near Nethers, Va.	383245	0782036	.95	1.01
01665730	Cedar Run at Forest Trail near Syria, Va.	383222	0782100	2.28	2.32
01665740	Robinson River below Cedar Run near Syria, Va.	383214	0782048	9.81	9.53
01665800	Rose River along Rose River Trail near Syria, Va.	383055	0782158	9.17	9.15
01665850	Robinson River at Route 231 near Criglersville, Va.	382654	0781643	47.7	47.80
01666000	Robinson River at Route 15 at Locust Dale, Va.	382041	0780708	148	148.00
01666500	Robinson (Robertson) River at Route 614 near Locust Dale, Va.	381930	0780544	179	179.00
01666990	Rapidan River at Route 615 at Rapidan, Va.	381837	0780358	445	--
01667000	Rapidan River below Route 615 at Rapidan, Va.	381847	0780349	445	446.00
01667500	Rapidan River above Route 522 near Culpeper, Va.	382101	0775830	468	472.00

Table 2. Drainage areas of streams tributary to the North Atlantic Slope, South Atlantic Slope, and Ohio River Basins in and around Virginia. — Continued[dd, degrees; mm, minutes; ss, seconds; mi², square miles; --, not determined; *, previous site location]

Station identification number	Stream name and location	Latitude (ddmmss)	Longitude (ddmmss)	Drainage area	
				Current (mi ²)	Previous (mi ²)
01667600	Cedar Run tributary at Route 522 near Culpeper, Va.	382350	0780024	0.67	0.58
01667650	Cedar Run at Route 522 near Culpeper, Va.	382148	0775831	28.0	28.07
01667700	Sumerduck Run at Route 647 near Culpeper, Va.	382219	0775626	11.0	11.00
01667750	Potato Run at Route 661 near Stevensburg, Va.	382455	0775459	6.51	6.67
01667848	Black Walnut Run at mouth at Burr Hill, Va.	382036	0775133	12.1	11.90
01667850	Mine Run at Route 611 at Burr Hill, Va.	382036	0775132	32.7	31.8
01667870	Mountain Run at Route 611 near Burr Hill, Va.	382113	0775337	28.8	28.8
--	Rapidian River at mouth near Chancellorsville, Va.	382203	0773707	695	693.26
01668000	Rappahannock River below Motts Run near Fredericksburg, Va.	381830	0773145	1595	--
01668000*	Rappahannock River above I-95 near Fredericksburg, Va.	381830	0773146	1596	1596.00
01668035	Clairborne Run at Route 623 near Falmouth, Va.	381945	0772657	3.30	--
01668038	Clairborne Run below Route 3 at Fredericksburg, Va.	381810	0772652	6.51	--
01668045	Hazel Run at Route 1 (Bypass) at Fredericksburg, Va.	381716	0772913	9.50	--
01668048	Hazel Run at Route 17 at Fredericksburg, Va.	381730	0772726	12.8	--
01668064	Massaponax Creek at Route 208 near Four Mile Fork, Va.	381431	0773208	8.04	--
01668067	Massaponax Creek at Route 1 near Massaponax, Va.	381406	0773007	19.5	--
01668075	Massaponax Creek at Route 609 near New Post, Va.	381344	0772538	31.5	--
01668100	White Oak Run at Route 603 near Passapatanzy, Va.	381535	0772140	6.33	8.29
01668200	Gingoteague Run at Route 623 near Port Royal, Va.	381240	0770909	2.80	2.82
0166828230	Occupacia Creek at Route 17 near Chance, Va.	380239	0770020	29.3	--
01668300	Farmers Hall Creek at Route 17 near Champlain, Va.	380005	0765839	2.18	2.18
01668305	Farmers Hall Creek at Route 631 near Champlain, Va.	380058	0765747	3.65	3.65
01668450	Ruin Branch tributary at Montross, Va.	380521	0765001	.10	--
01668500	Cat Point Creek below Route 637 near Montross, Va.	380223	0764937	45.6	45.60
01668700	Mount Landing Creek at Route 716 near Mount Landing, Va.	375744	0765610	21.8	--
01668800	Hoskins Creek at Route 717 near Tappahannock, Va.	375538	0765715	15.4	15.50
01669000	Piscataway Creek at Route 691 near Tappahannock, Va.	375237	0765402	27.9	28.00
01669100	Totuskey Creek at Route 619 near Emmerton, Va.	375447	0763928	26.8	28.40
01669120	Garlands Millpond tributary near Haynesville, Va.	375719	0764030	.32	--
01669150	Belwood Swamp at Route 201 near Lancaster, Va.	374647	0762946	8.07	8.23
01669300	Yorkers Swamp at Route 17 near Center Cross, Va.	374711	0764554	1.42	1.37
01669400	Timber Branch Swamp tributary at Route 610 at Dragonville, Va.	374126	0764624	.63	.61
01669500	Dragon Swamp at Route 602 near Church View, Va.	374106	0764336	86.0	84.90
01669520	Dragon Swamp at Route 603 at Mascot, Va.	373802	0764147	109	108.00
01669800	My Ladys Swamp at Route 629 near Saluda, Va.	373435	0763129	4.92	4.81

Table 2. Drainage areas of streams tributary to the North Atlantic Slope, South Atlantic Slope, and Ohio River Basins in and around Virginia. — Continued

[dd, degrees; mm, minutes; ss, seconds; mi², square miles; --, not determined; *, previous site location]

Station identification number	Stream name and location	Latitude (ddmmss)	Longitude (ddmmss)	Drainage area	
				Current (mi ²)	Previous (mi ²)
01669810	Healys Pond tributary at Route 620 near Harmony Village, Va.	373454	0763023	0.76	0.72
01669850	Queens Creek at Route 626 near Blakes, Va.	372926	0762254	1.51	1.56
01669885	North End Branch (North River) tributary at Route 657 near North, Va.	372817	0762514	.97	1.04
01670000	Beaverdam Swamp above Route 606 near Ark, Va.	372815	0763347	7.14	6.63
01670010	Beaverdam Swamp tributary 2 at Route 606 at Ark, Va.	372636	0763426	1.20	1.29
01670020	Beaverdam Swamp at Route 616 at Gloucester, Va.	372535	0763147	21.7	22.10
01670100	Mountain Run tributary near Gordonsville, Va.	380945	0780944	.53	.50
01670120	Mountain Run at Route 643 near Gordonsville, Va.	380939	0780605	14.1	14.10
01670130	Negro Run above Mountain Run near Gordonsville, Va.	380905	0780535	13.4	13.32
01670145	Gold Mine Creek tributary to tributary 1 to tributary at Louisa, Va.	380201	0780008	.39	--
01670180	Pamunkey Creek at Route 669 at Lahore, Va.	381133	0775808	41.8	40.5
01670250	Plentiful Creek at Route 653 at Belmont, Va.	380934	0775133	10.1	--
01670300	Contrary Creek below Route 522 near Mineral, Va.	380353	0775244	5.58	5.53
01670320	Freshwater Creek above wastewater outfall at Mineral, Va.	380034	0775355	.51	--
01670400	North Anna River at Route 601 near Partlow, Va.	380046	0774204	342	344.00
01670435	Northeast Creek at Route 622 near Partlow, Va.	380236	0774135	34.8	--
01670500	North Anna River at Route 603 near Hewlett, Va.	375700	0773505	421	424.00
01671000	North Anna River near Doswell, Va.	375316	0772914	440	441.00
01671020	North Anna River at Route 30 at Hart Corner near Doswell, Va.	375101	0772540	462	463.00
01671025	North Anna River above Little River near Doswell, Va.	374933	0772534	467	466.59
01671040	Long Creek at Route 655 near Buckner, Va.	375539	0774743	8.00	8.01
01671100	Little River at Route 685 near Doswell, Va.	375222	0773047	107	107.00
01671200	South Anna River above wastewater outfall near Gordonsville, Va.	380725	0781219	5.01	--
01671210	South Anna River at Route 603 near Boswells Tavern, Va.	380531	0781124	8.84	--
01671230	Bowler Creek at Route 660 near Lindsay, Va.	380522	0781322	2.43	--
01671270	Licking Hole Creek below Izac Lake near Boswells Tavern, Va.	380433	0780854	2.82	2.73
01671300	South Anna River at Route 695 near Poindexter, Va.	380150	0780817	47.6	47.00
01671500	Bunch (Hudson) Creek at Route 15 near Boswells Tavern, Va.	380155	0781129	4.34	4.37
--	Hudson Creek above Camp Creek near Boswells Tavern, Va.	380031	0780835	13.7	13.74
--	Camp Creek above Wheeler Creek near Boswells Tavern, Va.	380028	0780850	9.42	9.42
--	Wheeler Creek at mouth at Poindexter, Va.	380029	0780850	6.94	--
01671600	Camp Creek at Route 640 at Poindexter, Va.	380029	0780850	16.4	16.40
--	Hudson Creek at mouth near Boswells Tavern, Va.	380030	0780833	30.1	29.89
01671615	Fosters Creek at Route 250 near Ferncliff, Va.	375736	0781119	.61	.61
01671650	Waldrop (Waldrops) Creek at Route 632 near Louisa, Va.	380009	0780421	3.03	2.85

Table 2. Drainage areas of streams tributary to the North Atlantic Slope, South Atlantic Slope, and Ohio River Basins in and around Virginia. — Continued[dd, degrees; mm, minutes; ss, seconds; mi², square miles; --, not determined; *, previous site location]

Station identification number	Stream name and location	Latitude (ddmmss)	Longitude (ddmmss)	Drainage area	
				Current (mi ²)	Previous (mi ²)
01671700	South Anna River at Route 604 near Louisa, Va.	375735	0780128	131	123.00
01671750	Harris Creek at Route 632 near Trevilians, Va.	380103	0780305	3.43	3.31
01671800	Harris Creek at Route 208 near Louisa, Va.	375945	0780113	7.43	7.38
01671925	Northeast Creek at Route 33 near Mineral, Va.	375840	0775621	9.32	--
01671950	Deep Creek at Route 640 near Apple Grove, Va.	375158	0775452	10.2	10.1
01672000	South Anna River at Route 617 at Vontay, Va.	374621	0774457	297	332.00
01672400	South Anna River tributary 6 at Route 54 near Ashland, Va.	374841	0773419	.33	.33
01672500	South Anna River at Route 54 near Ashland, Va.	374749	0773256	395	394.00
01672820	Newfound River at Route 667 near Ashland, Va.	374918	0773046	39.3	--
--	Pamunkey River at Route 301 near Hanover, Va.	374720	0772214	1069	--
01672900	Pamunkey River tributary 1 at Route 301 near Hanover, Va.	374801	0772219	.82	.71
01673000	Pamunkey River at Route 614 near Hanover, Va.	374604	0771956	1078	1081.00
01673010	Mechumps Creek at Route 301 at Hanover, Va.	374531	0772152	18.9	--
01673500	Totopotomoy Creek at Route 301 near Atlee, Va.	374010	0772257	5.77	5.89
01673550	Totopotomoy Creek at Route 606 near Studley, Va.	373946	0771528	25.5	26.20
01673560	Totopotomoy Creek at Route 605 near Manquin, Va.	374046	0771307	30.2	30.90
01673600	Matadequin Creek at Route 606 near Tunstall, Va.	373703	0770816	28.6	29.10
01673610	Clopton Swamp tributary above wastewater outfall near Quinton, Va.	373306	0770621	.24	--
01673620	Acquinton Creek at Route 629 near King William, Va.	374105	0770243	9.28	8.93
01673638	Cohokey Mill Creek near Lester Manor, Va.	373737	0765745	8.81	9.07
01673700	Catharpin Run at Route 608 near Brokenburg, Va.	381322	0774329	7.49	7.52
01673800	Po River at Route 208 near Spotsylvania, Va.	381017	0773541	77.6	77.40
01673900	Poni River tributary 1 at Route 607 near Guinea, Va.	380907	0772715	6.18	6.15
01673960	Mat River at Route 647 near Marye, Va.	380623	0773606	14.6	14.50
01674000	Mattaponi River above Route 605 near Bowling Green, Va.	380342	0772309	256	257.00
01674100	Motto River tributary at Route 605 near Cedon, Va.	380524	0773110	1.62	1.64
01674160	Polecat Creek at Route 601 at Cedar Fork, Va.	375809	0773219	1.16	--
01674171	Polecat Creek tributary near Golansville, Va.	375756	0772916	4.06	--
01674172	Polecat Creek at Route 652 near Ladysmith, Va.	375813	0772912	10.8	10.80
01674174	Stevens Mill Run at Route 601 at Golansville, Va.	375920	0772949	10.1	--
01674180	Polecat Creek at Route 601 at Penola, Va.	375720	0772207	47.6	--
01674200	Reedy Creek at Route 301 near Dawn, Va.	375256	0772134	17.5	16.80
01674250	Maracossic Creek at Route 721 at Sparta, Va.	375923	0771429	37.6	37.60
01674300	Maracossic Creek at Route 646 above Beverly Run near Gether, Va.	375515	0771128	72.4	72.40
01674350	Beverly Run at Route 630 near Alps, Va.	375929	0770909	26.7	26.50

Table 2. Drainage areas of streams tributary to the North Atlantic Slope, South Atlantic Slope, and Ohio River Basins in and around Virginia. — Continued[dd, degrees; mm, minutes; ss, seconds; mi², square miles; --, not determined; *, previous site location]

Station identification number	Stream name and location	Latitude (ddmmss)	Longitude (ddmmss)	Drainage area	
				Current (mi ²)	Previous (mi ²)
01674400	Beverly Run at Route 721 near Alps, Va.	375708	0771047	47.2	46.90
01674500	Mattaponi River above Route 628 near Beulahville, Va.	375316	0770947	602	601.00
01674580	Herring Creek above wastewater outfall near Dawn, Va.	375018	0771935	3.68	--
01674600	Herring Creek at Route 609 near Aylett, Va.	375013	0771002	28.4	28.90
01674700	Aylett Creek at Route 360 at Aylett, Va.	374706	0770622	6.55	6.17
01674805	Dickeys Swamp at Route 620 near Stevensville, Va.	374404	0765755	19.8	19.80
01675550	Glebe Swamp at Route 608 near Shackelfords, Va.	373322	0764237	4.63	4.57
01677000	Ware Creek at Route 600 near Toano, Va.	372618	0764711	6.29	6.29
01677100	France Swamp at Route 606 near Toano, Va.	372516	0764705	6.88	6.70
01677200	Skimino Creek below Barlows Pond at Route 646 near Lightfoot, Va.	372159	0764256	8.19	8.19
01677900	Moores Creek at Route 171 near Poquoson, Va.	370729	0762514	.94	1.03
02002000	Jackson River at Route 220 at Vanderpool, Va.	382205	0793734	12.9	13.00
02009500	Cattail Run at Route 220 near Bolar, Va.	381600	0794019	.68	.74
02011010	Warm Springs Run above wastewater outfall at Warm Springs, Va.	380257	0794742	3.05	--
02011400	Jackson River along Route 603 near Bacova, Va.	380232	0795253	157	158.00
02011405	Jackson River near Bacova Junction, Va.	380150	0795336	158	159.00
02011460	Back Creek above Route 600 near Sunrise, Va.	381443	0794607	60.9	60.10
02011470	Back Creek at Route 600 at Sunrise, Va.	381125	0794842	75.6	76.1
02011480	Back Creek on Route 600 near Mountain Grove, Va.	380805	0795156	88.6	88.40
02011490	Little Back Creek near Sunrise, Va.	381252	0795015	4.90	4.91
02011500	Back Creek along Route 39 near Mountain Grove, Va.	380410	0795349	134	134.00
02011510	Back Creek near Bacova Junction, Va.	380210	0795422	140	140.00
02011795	Lake Moomaw near Hot Springs, Va.	375704	0795728	345	344.00
02011800	Jackson River below Gathright Dam near Hot Springs, Va.	375654	0795657	345	345.00
02011830	Hot Springs Run at Bacova Junction, Va.	380033	0795146	4.62	--
--	Jackson River tributary at Natural Well Road at Natural Well, Va.	375455	0795822	.13	--
02012000	Falling Spring Creek at Route 220 near Falling Spring, Va.	375205	0795644	11.2	11.50
02012500	Jackson River at Route 687 at Falling Spring, Va.	375236	0795838	410	411.00
02012900	Jackson River above Dunlap Creek at Covington, Va.	374745	0795939	443	440.00
02012950	Sweet Springs Creek tributary at Route 311 at Sweet Chalybeate, Va.	373925	0801409	.86	.66
02012980	Jerrys Run at I-64 near Alleghany, Va.	374837	0801124	1.73	--
02012993	Ogle Creek at Tanglewood outfall near Callaghan, Va.	374848	0800527	25.5	25.63
02013000	Dunlap Creek at Route 60 near Covington, Va.	374810	0800249	162	164.00
02013100	Jackson River below Dunlap Creek, at Covington, Va.	374719	0800002	612	614.00
02014000	Potts Creek at Route 18 near Covington, Va.	374344	0800232	153	153.00

Table 2. Drainage areas of streams tributary to the North Atlantic Slope, South Atlantic Slope, and Ohio River Basins in and around Virginia. — Continued[dd, degrees; mm, minutes; ss, seconds; mi², square miles; --, not determined; *, previous site location]

Station identification number	Stream name and location	Latitude (ddmmss)	Longitude (ddmmss)	Drainage area	
				Current (mi ²)	Previous (mi ²)
02014500	Smith Creek above old dam near Clifton Forge, Va.	375105	0795047	12.3	12.40
02015000	Smith Creek near Clifton Forge, Va.	375103	0795032	12.4	12.50
02015300	Wilson Creek at wastewater outfall near Longdale, Va.	375037	0794800	28.5	--
02015600	Cowpasture River at Route 250 near Head Waters, Va.	381930	0792613	11.2	11.30
02015700	Bullpasture River at Route 614 at Williamsville, Va.	381143	0793413	110	110.00
02015900	Jerry Branch at Route 42 near Clifton Forge, Va.	375223	0794435	.56	.55
02015930	Pads Creek at Griffith near Longdale Furnace, Va.	375154	0794355	26.3	26.30
02016000	Cowpasture River below Route 633 near Clifton Forge, Va.	374730	0794534	461	461.00
02016500	James River below Route 220 at Lick Run, Va.	374625	0794704	1371	1373.00
02017000	Meadow Creek above Route 311 at New Castle, Va.	372935	0800634	13.3	13.80
02017300	Craig Creek at Route 616 at New Castle, Va.	373006	0800617	112	112.00
02017400	Johns Creek tributary at Route 311 near New Castle, Va.	373030	0801129	1.46	1.57
02017500	Johns Creek at Route 615 at New Castle, Va.	373022	0800624	105	104.00
02017700	Craig Creek tributary at Route 606 near New Castle, Va.	373321	0795951	2.05	2.05
02018000	Craig Creek at railroad at Parr, Va.	373957	0795441	329	329.00
02018310	James River tributary 3 at Eagle Rock, Va.	373817	0794751	.87	.87
02018500	Catawba Creek at Route 600 near Catawba, Va.	372805	0800019	34.3	34.30
02018700	Campbell Branch at Route 606 near Fincastle, Va.	373237	0795727	1.50	1.51
02018800	North Fork at Route 606 near Fincastle, Va.	373207	0795602	5.63	4.17
02018810	Crooked Run at Fincastle Lake Outfall near Fincastle, Va.	373044	0795539	1.08	--
02018850	Borden Creek near Flatwoods, Va.	373217	0795423	2.30	--
02019000	Catawba Creek near Fincastle, Va.	373300	0795004	104	104.00
02019100	Spreading Spring Branch at Route 632 at Springwood, Va.	373257	0794441	6.58	6.76
02019400	Mill (Looney Mill) Creek at Route 636 near Buchanan, Va.	372948	0794527	29.3	29.60
02019480	Looney Creek above Long Run at Route 625 near Buchanan, Va.	373058	0794233	59.4	--
02019485	Long Run above Looney Creek at Route 625 near Buchanan, Va.	373102	0794234	3.01	--
02019500	James River at Route 11 at Buchanan, Va.	373150	0794044	2073	2075.00
02020100	Renick Run at Frontage Road near Buchanan, Va.	373527	0793803	2.08	2.06
02020200	Calfpasture River near Route 250 near West Augusta, Va.	381624	0791801	12.5	12.80
02020500	Calfpasture River at Route 42 above Mill Creek, at Goshen, Va.	375916	0792937	141	144.00
02021000	Calfpasture River below Mill Creek at Goshen, Va.	375910	0792937	186	190.00
02021080	Alum Creek below Rockbridge Alum Springs near Millboro, Va.	375436	0793626	3.02	--
02021100	Brattons Run tributary at Route 780 near Goshen, Va.	375555	0793439	.92	1.62
02021110	Brattons Run at Route 39 near Goshen, Va.	375807	0793016	28.8	28.86
--	Brattons Run at mouth near Goshen, Va.	375810	0793014	28.8	--

Table 2. Drainage areas of streams tributary to the North Atlantic Slope, South Atlantic Slope, and Ohio River Basins in and around Virginia. — Continued

[dd, degrees; mm, minutes; ss, seconds; mi², square miles; --, not determined; *, previous site location]

Station identification number	Stream name and location	Latitude (ddmmss)	Longitude (ddmmss)	Drainage area	
				Current (mi ²)	Previous (mi ²)
02021400	Byrd Spring Creek tributary above Route 683 near Craigsville, Va.	380226	0792311	0.40	--
02021500	Maury River above Route 39 at Rockbridge Baths, Va.	375426	0792519	329	329.00
02021653	Hays Creek at Route 602 near Rockbridge Baths, Va.	375441	0792401	79.4	--
02021670	Cedar Creek near Fairfield, Va.	375332	0791848	1.77	1.75
02021685	Cedar Grove Branch at Route 712 at Bustleburg, Va.	375336	0792154	8.00	--
02021700	Cedar Grove Branch at Route 39 near Rockbridge Baths, Va.	375300	0792307	12.0	12.30
02022500	Kerrs Creek at I-64 near Lexington, Va.	374932	0792635	35.1	35.00
02023000	Maury (North) River above Route 631 near Lexington, Va.	374849	0792641	481	487.00
02023100	Chimney Branch near Vesuvius, Va.	375607	0790440	.79	.78
02023150	Saint Marys River tributary near Vesuvius, Va.	375548	0790844	.92	.84
02023300	South (Saint Marys) River at Route 608 near Steeles Tavern, Va.	375550	0790954	15.8	15.70
02023390	Moores Creek above wastewater outfall at Raphine, Va.	375557	0791351	.62	--
02023395	Moores Creek above wastewater outfall near Raphine, Va.	375457	0791409	2.50	--
02023400	South River tributary near Marlbrook, Va.	375136	0791334	1.30	1.30
02023410	Marlbrook Creek at Fairfield, Va.	375259	0791656	1.39	1.38
02023500	South River at Route 631 near Riverside, Va.	374700	0792134	112	111.00
02024000	Maury River near Buena Vista, Va.	374545	0792329	647	646.00
02024200	Maury River at Route 60 at Buena Vista, Va.	374446	0792217	650	670.00
02024208	Indian Gap Run at Modine Factory at Buena Vista, Va.	374338	0792137	4.10	--
02024240	South Buffalo Creek at Route 611 near Lexington, Va.	374414	0793417	21.2	21.10
02024300	Buffalo Creek at Route 608 near Glasgow, Va.	374110	0792602	123	123.00
02024500	Maury (North) River at Route 130 at Glasgow, Va.	373752	0792637	837	831.00
--	Maury River at mouth at Glasgow, Va.	373726	0792640	838	839.3
02024750	James River at Bedford Dam near Major, Va.	373440	0792235	3070	3070.
02024752	James River at Blue Ridge Parkway near Big Island, Va.	373319	0792202	3076	--
02024760	Reed Creek at Route 637 near Big Island, Va.	373010	0792406	7.44	--
02024765	Meadow Creek at Route 637 near Big Island, Va.	373013	0792409	5.48	--
02024915	Pedlar River at Forest Road 39 near Buena Vista, Va.	374151	0791642	27.1	27.1
02025000	Pedlar River at Route 635 near Pedlar Mills, Va.	373236	0791509	94.6	91.00
02025500	James River at Holcomb(s) Rock, Va.	373005	0791545	3256	3259.00
02025610	Harris Creek at Old Dominion Job Corps diversion near Faulconerville, Va.	373254	0790829	11.4	--
02025680	Harris Creek tributary near Monroe, Va.	372844	0790810	.43	--
02025800	Burton Creek tributary at Route 29 at Lynchburg, Va.	372111	0791104	2.36	2.36
02025850	Ivy Creek below Ivy Hill Lake near Norwood, Va.	372337	0791834	9.74	--
02025863	Ivy Creek at Route 501 at Lynchburg, Va.	372501	0791118	37.4	--

Table 2. Drainage areas of streams tributary to the North Atlantic Slope, South Atlantic Slope, and Ohio River Basins in and around Virginia. — Continued[dd, degrees; mm, minutes; ss, seconds; mi², square miles; --, not determined; *, previous site location]

Station identification number	Stream name and location	Latitude (ddmmss)	Longitude (ddmmss)	Drainage area	
				Current (mi ²)	Previous (mi ²)
02025868	Blackwater Creek at Route 501 (Alternate) at Lynchburg, Va.	372511	0790849	65.3	--
0202587150	Fishing Creek at Winchester Road at Lynchburg, Va.	372353	0790741	7.03	--
02025890	Tussocky Creek tributary at wastewater outfall near City Farm, Va.	371756	0790903	.19	--
02025900	Beaver Creek at Route 660 near Bocoock, Va.	372117	0790426	24.0	24.0
02025967	Wreck Island Creek near Concord, Va.	372655	0785459	39.6	40
02025970	Wreck Island Creek above quarries near Riverville, Va.	372853	0785342	55.8	--
02026000	James River above Route 60 at Bent Creek, Va.	373211	0784946	3649	3683.00
02026400	South Fork Tye River at Nash, Va.	375124	0790246	14.1	14.20
02026500	Tye River at Roseland, Va.	374514	0785911	69.0	68.00
02027000	Tye River at Route 158 near Lovingston, Va.	374256	0785854	93.0	92.80
02027100	Greasy Spring Branch near Alhambra, Va.	374715	0790914	1.03	1.04
02027200	Shoe Creek at Alhambra, Va.	374723	0790611	4.91	4.88
02027500	Piney River at Route 151 at Piney River, Va.	374209	0790139	47.7	47.60
02027600	Buffalo River at Route 610 at Forks of Buffalo, Va.	374047	0791319	15.8	15.90
02027700	Buffalo River tributary at Route 60 near Amherst, Va.	373346	0785734	.45	.46
02027800	Buffalo River at Route 657 near Tye River, Va.	373621	0785524	148	147.00
02028000	Tye River near Norwood, Va.	373741	0785249	355	360.00
02028460	Mill Creek near Avon, Va.	375839	0785207	1.91	1.89
02028465	Meriwether Creek near Greenfield, Va.	375724	0785206	.97	.99
02028480	South Fork Rockfish River tributary near Love, Va.	375417	0785750	.39	--
02028500	Rockfish River at Route 634 near Greenfield, Va.	375211	0784924	94.8	94.60
02028700	Cove Creek at Route 29 near Covessville, Va.	375207	0784331	3.85	4.00
02028750	Cove Creek at Route 632 at Faber, Va.	374951	0784405	16.9	19.7
02028800	Ballinger Creek at Route 6 at Esmont, Va.	374934	0783634	5.56	5.42
02028823	Ballinger Creek at Route 626 near Warren, Va.	374648	0783516	15.0	--
02028850	Rock Island Creek at Route 723 near Centenary, Va.	374405	0783319	9.05	--
02028900	Miller Creek at Route 6 near Scottsville, Va.	374831	0783045	6.39	6.60
02028930	Totier Creek above Rock Castle Creek near Scottsville, Va.	374737	0783113	17.8	--
02028940	Rock Castle Creek tributary at mouth near Scottsville, Va.	374736	0783117	3.00	--
02028960	Rock Castle Creek at mouth near Scottsville, Va.	374736	0783115	10.6	10.54
02029000	James River below Route 20 at Scottsville, Va.	374751	0782929	4581	4584.00
02029050	Little Georgia Creek at Route 679 near Scottsville, Va.	374505	0782800	5.21	--
02029190	North Fork Hardware River at Route 708 near Red Hill, Va.	375818	0783707	4.03	--
02029200	North Fork Hardware River at Route 29 at Red Hill, Va.	375804	0783703	11.2	11.00
02029400	South Branch of North Fork Hardware River at Route 29 near North Garden, Va.	375722	0783934	6.58	6.59

Table 2. Drainage areas of streams tributary to the North Atlantic Slope, South Atlantic Slope, and Ohio River Basins in and around Virginia. — Continued

[dd, degrees; mm, minutes; ss, seconds; mi², square miles; --, not determined; *, previous site location]

Station identification number	Stream name and location	Latitude (ddmmss)	Longitude (ddmmss)	Drainage area	
				Current (mi ²)	Previous (mi ²)
02029410	Sowell Branch at Route 20 near Charlottesville, Va.	375631	0783215	1.46	1.55
02029430	Harris Creek at Route 20 near Keene, Va.	375306	0783256	1.68	1.71
02029450	Thomas Creek at Route 20 at Keene, Va.	375226	0783309	.28	.28
02029500	Hardware River at Route 618 near Scottsville, Va.	375025	0782827	104	104.00
02030000	Hardware River at Route 637 below Briery Creek (Run) near Scottsville, Va.	374846	0782719	116	116.00
02030030	Hardware River at Route 646 at Hardware, Va.	374429	0782425	138	--
02030100	Frisby Branch at Route 24 near Buckingham, Va.	373114	0783703	4.33	4.35
02030180	Austin Creek at Route 607 near Buckingham, Va.	373232	0783928	6.33	--
02030195	North River at Route 648 near Buckingham, Va.	373349	0783412	33.0	--
02030215	Troublesome Creek at Route 631 near Buckingham, Va.	373413	0783155	6.40	--
02030400	Turpin Creek near Dillwyn, Va.	373420	0782849	1.54	--
02030500	Slate River above Route 676 near Arvonnia, Va.	374211	0782239	226	226.00
02030755	North Creek tributary above wastewater outfall at Fork Union, Va.	374529	0781537	.11	--
02030760	North Creek at Route 652 at Fork Union, Va.	374528	0781501	1.77	--
02030800	Stockton Creek at Route 6 near Afton, Va.	380148	0784829	2.70	2.80
02030850	Stockton Creek at Route 635 near Crozet, Va.	380237	0784153	20.4	20.40
02030900	Powells Creek at Route 684 near Crozet, Va.	380450	0784306	2.40	2.32
02031000	Mechums River at Route 614 near White Hall, Va.	380609	0783534	95.3	95.40
02031400	North Fork Moormans River near Browns Cove, Va.	381142	0784356	2.61	2.60
02031410	North Fork Moormans River tributary at Skyline Drive near Harriston, Va.	381233	0784451	.21	.21
02031420	North Fork Moormans River tributary near Browns Cove, Va.	381150	0784431	.71	.70
02031430	North Fork Moormans River above Big Branch near Browns Cove, Va.	381012	0784429	6.17	6.19
02031440	North Fork Moormans River below Big Branch near White Hall, Va.	380923	0784455	9.06	9.12
02031500	North Fork Moormans River above Charlottesville Reservoir near White Hall, Va.	380825	0784504	11.2	11.40
02031800	South Fork Moormans River near White Hall, Va.	380813	0784458	5.56	5.56
02032000	Moormans River below Charlottesville Reservoir near White Hall, Va.	380805	0784409	17.8	18.00
02032100	Moormans River at Route 614 near White Hall, Va.	380745	0784326	20.8	20.80
02032110	Doyles River at Route 629 at Browns Cove, Va.	381228	0784029	6.63	6.44
02032200	Doyles River at Route 810 near White Hall, Va.	381210	0784016	6.76	6.70
02032250	Moormans River at Route 601 near Free Union, Va.	380826	0783321	77.0	74.60
02032300	Muddy Run at Route 810 near Stanardsville, Va.	381405	0783701	3.21	3.36
02032310	Muddy Run tributary at Route 810 near Boonesville, Va.	381402	0783707	2.57	2.59
02032400	Buck Mountain Creek at Route 665 near Free Union, Va.	380916	0783221	34.5	37.00
02032500	South Fork Rivanna River at Route 660 near Earlysville, Va.	380727	0783102	215	216.00
02032515	South Fork Rivanna River at Route 29 near Charlottesville, Va.	380606	0782738	259	260.00

Table 2. Drainage areas of streams tributary to the North Atlantic Slope, South Atlantic Slope, and Ohio River Basins in and around Virginia. — Continued[dd, degrees; mm, minutes; ss, seconds; mi², square miles; --, not determined; *, previous site location]

Station identification number	Stream name and location	Latitude (ddmmss)	Longitude (ddmmss)	Drainage area	
				Current (mi ²)	Previous (mi ²)
02032530	Parker Branch at Route 810 near Stanardsville, Va.	381707	0783049	3.21	3.24
02032540	Haneytown Creek at Route 810 near Stanardsville, Va.	381648	0783049	4.02	4.45
02032545	Ivy Creek at Route 601 near Boonesville, Va.	381607	0783644	6.06	6.11
--	Ivy Creek below Route 601 near Boonesville, Va.	381605	0783642	6.78	--
02032550	Lynch River at Route 810 at Nortonsville, Va.	381412	0783233	13.6	13.60
02032580	Swift Run below Route 33 near Swift Run, Va.	382124	0783212	.45	.47
02032583	Swift Run along Route 33 near Bacon Hollow, Va.	382057	0783204	1.40	1.41
02032586	Swift Run along Route 33 near Lydia, Va.	382047	0783131	2.85	2.86
02032589	Swift Run along Route 33 at Lydia, Va.	382031	0783039	4.78	4.80
02032600	Swift Run tributary at Route 33 near Stanardsville, Va.	382033	0783036	.31	.35
02032640	North Fork Rivanna River at Route 606 near Earlysville, Va.	380948	0782529	108	108.16
02032680	North Fork Rivanna River at Route 649 near Proffit, Va.	380516	0782443	174	176.00
--	North Fork Rivanna River at mouth near Charlottesville, Va.	380427	0782623	177	177.75
02032700	Schenks Branch above Route 250 at Charlottesville, Va.	380232	0782829	1.39	1.34
02033000	Rivanna River at Route 250 near Charlottesville, Va.	380206	0782729	467	473.00
02033300	Moore's Creek along Route 29 near Charlottesville, Va.	380026	0783424	3.37	3.52
02033390	Biscuit Run at wastewater outfall near Charlottesville, Va.	375958	0783108	11.6	--
02033495	Moore's Creek above wastewater outfall near Charlottesville, Va.	380108	0782738	34.9	34.64
02033500	Rivanna River below Moore's Creek near Charlottesville, Va.	380110	0782712	503	507.00
02033570	Shadwell Creek near Shadwell, Va.	380114	0782526	.59	.624
02033670	Rivanna River at Route 729 near Shadwell, Va.	380025	0782401	512	--
02033700	Henderson Creek at Route 729 near Shadwell, Va.	375906	0782404	1.75	1.76
02033710	Carroll Creek above I-64 near Keswick, Va.	380018	0782131	3.82	2.06
02033750	Buck Island Creek below Route 729 below Houchins Creek near Simeon, Va.	375714	0782414	30.9	31.00
02033800	Mechunk Creek at Route 250 near Boyd Tavern near Zion Crossroads, Va.	375904	0781843	49.0	--
02034000	Rivanna River at Route 15 at Palmyra, Va.	375129	0781557	663	664.00
02034050	Hunters Branch at Route 15 near Palmyra, Va.	375649	0781429	1.59	1.63
02034100	James River at Route 669 at Columbia, Va.	374501	0780939	5843	5744.00
02034200	Willis River at Route 15 at Curdsville, Va.	372545	0782717	40.7	42.3
02034250	Whispering Creek at Route 60 at Sprouses Corner, Va.	373132	0782859	.37	.43
02034300	Little Willis River at Route 15 at Curdsville, Va.	372439	0782734	6.85	7.07
02034500	Willis River at Route 690 at Lakeside Village (Flanagan Mills), Va.	374001	0780959	262	262.00
02035000	James River at Route 45 at Cartersville, Va.	374016	0780509	6252	6257.00
02035400	Big Lickinghole Creek tributary at Route 250 near Ferncliff, Va.	374935	0775822	.54	.55
02035450	Rocketts Creek tributary at Route 250 near Gum Springs, Va.	374714	0775449	.31	.34

Table 2. Drainage areas of streams tributary to the North Atlantic Slope, South Atlantic Slope, and Ohio River Basins in and around Virginia. — Continued

[dd, degrees; mm, minutes; ss, seconds; mi², square miles; --, not determined; *, previous site location]

Station identification number	Stream name and location	Latitude (ddmmss)	Longitude (ddmmss)	Drainage area	
				Current (mi ²)	Previous (mi ²)
02035500	Big Lickinghole Creek at Route 600 near Goochland, Va.	374132	0775721	68.4	70.00
02036000	Beaverdam Creek at Route 6 at State Farm, Va.	373851	0774933	39.8	42.00
02036500	Fine Creek at Route 711 at Fine Creek Mills, Va.	373553	0774911	22.4	22.10
0203667510	Tuckahoe Creek tributary 1 at Route 288 near Centerville, Va.	373923	0773946	.004	--
0203667525	Tuckahoe Creek tributary 2 at Route 288 near Centerville, Va.	373854	0773957	.010	--
0203667530	Tuckahoe Creek tributary to tributary 3 at Route 288 near Centerville, Va.	373845	0773956	.036	--
0203668010	Stony Run tributary to tributary at Short Pump, Va.	373858	0773602	.006	--
0203668775	Tuckahoe Creek at railroad bridge near Tuckahoe Village, Va.	373409	0773810	62.7	--
02036700	Bernards Creek at Route 711 near Manakin, Va.	373326	0774032	15.7	15.40
02037500	James River above Route 147 near Richmond, Va.	373348	0773249	6753	6758.00
02037550	Little Westham Creek at College Avenue at Richmond, Va.	373451	0773229	1.81	1.79
02037618	James River at Boulevard Bridge at Richmond, Va.	373154	0772900	6776	--
02037800	Falling Creek at Route 653 near Midlothian, Va.	372716	0773519	18.2	18.10
02038000	Falling Creek at Route 651 near Chesterfield, Va.	372638	0773120	33.1	32.80
02038500	Falling Creek at Hopkins Road near Drewrys Bluff, Va.	372741	0772759	53.3	54.00
0203856510	Reedy Creek Industrial Drainage near Chesterfield, Va.	372404	0773143	.016	--
02038600	Proctors Creek below I-95 near Centralia, Va.	372254	0772429	14.8	--
--	James River tributary at Kingsland Road near Centralia, Va.	372358	0772241	.77	--
02038670	James River tributary below Kingsland Road near Centralia, Va.	372349	0772235	.79	.77
02038730	Fourmile Creek at Doran Road near Richmond Heights, Va.	372717	0771952	3.99	4.01
0203873100	Fourmile Creek at Route 5 near Richmond Heights, Va.	372558	0771932	10.2	--
0203873175	Fourmile Creek at Kingsland Road near Richmond Heights, Va.	372521	0771831	13.1	--
02038780	Johnson Creek at Route 746 near Rivermont, Va.	371959	0771936	7.34	6.22
02038800	Appomattox River (North Branch Appomattox) at Route 24 near Appomattox, Va.	372256	0784723	5.67	5.79
02038810	South Fork Appomattox River above wastewater outfall at Appomattox, Va.	372114	0784849	.12	--
02038830	Fishpond Creek at Route 617 near Hixburg, Va.	372210	0783844	13.9	--
02038840	Holiday Creek near Toga, Va.	372559	0784111	1.67	1.68
02038845	North Holiday Creek near Toga, Va.	372610	0784003	1.35	1.31
02038850	Holiday Creek above Route 614 near Andersonville, Va.	372456	0783809	8.54	8.53
02038880	Vaughans Creek at Route 626 near Hixburg, Va.	372109	0783556	23.2	23.20
02038892	Horsepen Creek at Route 683 near Sheppards, Va.	372039	0782927	5.44	--
02038900	Dry Creek at Route 635 near Farmville, Va.	372046	0782444	3.60	3.64
02038945	Spring Creek at Route 659 near Darlington Heights, Va.	371308	0783525	16.7	--
02038955	Mud Creek at Route 659 near Darlington Heights, Va.	371348	0783552	7.02	--
02038970	Spring Creek at Route 700 near Hampden Sydney, Va.	371358	0783113	32.1	--

Table 2. Drainage areas of streams tributary to the North Atlantic Slope, South Atlantic Slope, and Ohio River Basins in and around Virginia. — Continued[dd, degrees; mm, minutes; ss, seconds; mi², square miles; --, not determined; *, previous site location]

Station identification number	Stream name and location	Latitude (ddmmss)	Longitude (ddmmss)	Drainage area	
				Current (mi ²)	Previous (mi ²)
02039000	Buffalo Creek at Route 658 near Hampden Sydney, Va.	371526	0782911	69.6	69.70
02039500	Appomattox River at Route 45 at Farmville, Va.	371826	0782319	302	303.00
02039525	Bush River at Route 630 near Worsham, Va.	370850	0782423	20.9	--
02039580	Tanyard Branch at Route 646 near Hampden Sydney, Va.	371427	0782513	2.49	--
02039600	Briery Creek at Route 460 (Business) near Rice, Va.	371650	0782147	41.7	41.5
02039700	Sandy River at Route 460 near Rice, Va.	371632	0781916	39.6	39.7
02039760	Saylers Creek above Little Saylers Creek near Rice, Va.	371936	0781532	10.8	--
02039780	Little Saylers Creek above mouth near Rice, Va.	371936	0781533	12.1	--
02039781	Saylers Creek below Little Saylers Creek at Route 619 near Rice, Va.	371937	0781534	22.9	--
02039800	Angola Creek at Route 664 near Angola, Va.	372217	0781749	6.65	6.74
02039817	Dawsons Creek at Route 619 near Angola, Va.	372248	0781320	4.43	--
02039825	Sandy Creek at Route 650 near Angola, Va.	372241	0781230	9.59	--
02039850	Horsepen Creek at Route 660 near Angola, Va.	372503	0781648	3.94	--
02039865	Big Guinea Creek at Route 600 at Stony Point Mills, Va.	372633	0781225	36.6	--
02040000	Appomattox River at railroad at Mattoax, Va.	372518	0775132	725	726.00
02040500	Flat Creek at Route 681 near Amelia, Va.	372328	0780344	73.7	73.00
02040590	Nibbs Creek above Courthouse Branch near Amelia Court House, Va.	372203	0775932	15.4	15.5
02040600	Nibbs Creek tributary at Route 609 near Amelia, Va.	372346	0775819	.42	.35
02040610	Nibbs Creek at Route 636 near Winterham, Va.	372354	0775718	24.6	--
02040685	Flat Creek at Route 632 at Chula, Va.	372359	0775427	136	--
02040900	Little Creek at Route 611 near Denaro, Va.	371333	0780109	3.92	3.93
02040965	West Creek at Route 614 near Denaro, Va.	371521	0775854	41.1	--
02041000	Deep Creek above Route 153 near Mannboro, Va.	371700	0775211	158	158.00
02041125	Long Branch at Route 600 near Ammon, Va.	371259	0774727	2.57	--
02041130	Winticomack Creek at Route 622 near Winterpock, Va.	371514	0774419	25.9	--
02041160	Winterpock Creek at Route 602 near Winterpock, Va.	371951	0774339	10.4	--
02041500	Appomattox River near Petersburg, Va.	371334	0773219	1333	1334.00
02041500*	Appomattox River above Wallace Creek near Petersburg, Va.	371312	0773129	1334	--
02041650	Appomattox River at Route 600 at Matoaca, Va.	371331	0772831	1342	1344.00
02041700	Cattail Run above Route 1 at Petersburg, Va.	371259	0772638	9.35	--
02041790	Harrison Branch near Colonial Heights, Va.	371546	0772121	1.59	--
02041810	Swift Creek at Route 667 near Hallsboro, Va.	372719	0774210	21.5	21.4
02041820	Blackman Creek at Route 667 near Hallsboro, Va.	372455	0774337	5.89	5.80
02041830	Horsepen Creek at Route 667 near Hallsboro, Va.	372525	0774332	3.75	3.72
02041840	Otterdale Branch at Route 667 near Hallsboro, Va.	372629	0774239	3.60	3.59

Table 2. Drainage areas of streams tributary to the North Atlantic Slope, South Atlantic Slope, and Ohio River Basins in and around Virginia. — Continued

[dd, degrees; mm, minutes; ss, seconds; mi², square miles; --, not determined; *, previous site location]

Station identification number	Stream name and location	Latitude (ddmmss)	Longitude (ddmmss)	Drainage area	
				Current (mi ²)	Previous (mi ²)
02041850	Tomahawk Creek at Route 652 near Hallsboro, Va.	372809	0774053	4.12	4.20
02041860	Little Tomahawk Creek at Route 652 near Hallsboro, Va.	372754	0774020	2.35	2.31
02041870	Dry Creek above Route 360 near Winterpock, Va.	372356	0774126	2.99	2.96
02041880	Ashbrook Creek near Winterpock, Va.	372357	0774105	2.39	2.37
02041890	West Branch near Swift Creek Reservoir near Hallsboro, Va.	372440	0774115	2.72	2.75
02041900	Swift Creek Reservoir near Hallsboro, Va.	372501	0773856	64.5	64.4
02042000	Swift Creek at Bradley Bridge Road near Chester, Va.	371856	0772939	140	143.00
02042060	Swift Creek at Route 1 at Colonial Heights, Va.	371659	0772443	170	--
0204206210	Swift Creek tributary industrial drainage near Walthall, Va.	371809	0772305	.087	--
02042075	Bailey Creek at Fort Lee near Jefferson Park, Va.	371444	0771933	2.38	--
02042080	Bailey Creek at Route 156 at Hopewell, Va.	371627	0771723	13.8	--
02042140	Powell Creek at Route 10 at Garysville, Va.	371455	0770908	14.7	14.60
02042155	East Run at Route 609 at Barnettts, Va.	372213	0770928	10.1	--
02042160	West Run at Route 625 at Barnettts, Va.	372131	0770955	21.2	20.30
02042190	Courthouse Creek above Glebe Creek at Charles City, Va.	372037	0770435	4.90	--
02042200	Glebe Creek tributary at Route 155 near Charles City, Va.	372206	0770414	.99	.70
02042210	Courthouse Creek at Route 5 at Charles City, Va.	372038	0770413	9.78	9.79
02042250	Bailey Branch tributary at Route 10 at Spring Grove, Va.	371030	0765912	.55	.71
02042272	Chickahominy River tributary 13 near Glen Allen, Va.	374146	0773255	.27	--
02042280	Chickahominy River at Route 626 near Elmont, Va.	374139	0772927	32.2	56.00
--	Chickahominy River below I-95 near Greenwood, Va.	374058	0772702	34.9	--
02042284	Stony Run at Route 656 near Greenwood, Va.	374106	0772657	18.0	17.90
02042287	Chickahominy River at Route 301 near Atlee, Va.	373831	0772518	62.2	62.2
0204228775	Chickahominy River tributary to tributary at Ellerson, Va.	373717	0772330	.041	--
02042300	Horsepen Branch at Route 250 at Richmond, Va.	373546	0773039	1.06	1.27
02042400	Jordans Branch at Route 250 at Richmond, Va.	373511	0772954	2.52	2.53
02042426	Upham Brook at Wilkinson Road near Richmond, Va.	373648	0772527	37.4	38.6
0204243150	Beaverdam Creek tributary at Ellerson, Va.	373736	0772312	.008	--
02042443	Chickahominy River at I-64 near White Oak Swamp, Va.	373104	0771233	171	164
02042450	White Oak Swamp at Poplar Springs Road near White Oak Swamp, Va.	372904	0771604	11.4	12.0
02042455	White Oak Swamp at Route 156 at Elko, Va.	372806	0771231	22.8	--
02042500	Chickahominy River at Route 618 near Providence Forge, Va.	372611	0770339	252	252.00
02042600	Rumley Marsh near Providence Forge, Va.	372833	0770248	11.9	11.90
02042700	Collins Run at Route 155 near Providence Forge, Va.	372400	0770253	2.83	2.94
02042710	Collins Run tributary at Route 155 near Providence Forge, Va.	372416	0770249	.32	.28

Table 2. Drainage areas of streams tributary to the North Atlantic Slope, South Atlantic Slope, and Ohio River Basins in and around Virginia. — Continued[dd, degrees; mm, minutes; ss, seconds; mi², square miles; --, not determined; *, previous site location]

Station identification number	Stream name and location	Latitude (ddmmss)	Longitude (ddmmss)	Drainage area	
				Current (mi ²)	Previous (mi ²)
02042726	Diascund Creek at Route 628 near New Kent, Va.	372853	0765820	9.40	9.25
02042736	Beaverdam Creek at Route 632 near Barhamsville, Va.	372859	0765422	5.02	4.82
02042742	Wahrani Swamp at Route 632 near Barhamsville, Va.	372731	0765156	4.07	4.02
02042752	Mill Creek at Route 603 at Diascund, Va.	372324	0765204	8.60	8.59
02042754	Yarmouth Creek below Cranstons Pond at Route 632 near Toano, Va.	372049	0764855	6.99	6.93
02042756	Gordon Creek below Jolly Pond at Route 633 near Lightfoot, Va.	371749	0764909	4.85	4.89
02042765	James River tributary at Route 5 near Five Forks, Va.	371519	0764845	.91	.91
02042780	West Branch Long Hill Swamp at Route 612 near Lightfoot, Va.	371851	0764601	2.47	2.47
02042782	Powhatan Creek at Route 5 at Five Forks, Va.	371458	0764622	19.4	19.70
02042784	Grays Creek at Route 618 near Surry, Va.	371007	0765124	8.06	8.09
02042787	Skiffes Creek at Plantation Road near Lee Hall, Va.	371249	0763649	1.39	1.32
0204278995	Baptist Run at Route 637 near Yorktown, Va.	371248	0763145	2.02	2.02
02042790	Beaverdam Creek at Tour Drive near Yorktown, Va.	371210	0763115	5.29	5.46
02042794	Cypress Creek at Route 620 near Benns Church, Va.	365523	0763614	5.21	5.23
02042830	Shingle Creek at Route 642 at Suffolk, Va.	364317	0763401	3.51	3.56
02042890	Drum Point Creek at Boone, Va.	365045	0762602	.85	.61
02042950	Great Neck Creek tributary at Ocean Boulevard at Oceana, Va.	365004	0760046	.88	.90
02043000	Beggars Bridge Creek at Dawley Road near Pleasant Ridge, Va.	364058	0760036	.71	.76
--	Albemarle and Chesapeake Canal tributary near Great Bridge, Va.	364108	0761316	2.37	--
02043100	Albemarle and Chesapeake Canal tributary at Etheridge Road near Great Bridge, Va.	364138	0761314	3.46	3.80
02043500	Cypress Swamp at Route 32 at Cypress Chapel, Va.	363725	0763606	23.5	23.80
02043550	Washington Ditch along canal access road near Cypress Chapel, Va.	363822	0763135	41.3	41.00
02043600	Lake Drummond in Great Dismal Swamp, Va.	363543	0762622	119	--
02043975	Nottoway River at Route 625 near Green Bay, Va.	370658	0781406	18.0	--
02044000	Nottoway River at Route 723 near Burkeville, Va.	370441	0781149	38.7	38.70
02044200	Falls Creek tributary at Route 49 near Victoria, Va.	370205	0781025	.37	.34
02044225	Big Hounds Creek at Route 653 near Kenbridge, Va.	365947	0780735	13.5	--
02044290	Little Nottoway River at Route 626 near Blackstone, Va.	370348	0780301	58.5	--
02044300	Little Nottoway River at Route 40 near Blackstone, Va.	370226	0780206	72.5	72.6
02044400	Hurricane Branch at Route 40 at Blackstone, Va.	370448	0775854	1.61	1.61
02044405	Hurricane Branch near Blackstone, Va.	370339	0775847	4.63	5.61
02044410	Hurricane Branch tributary at wastewater outfall near Blackstone, Va.	370228	0775718	2.47	--
02044500	Nottoway River at Route 612 near Rawlings, Va.	365901	0774759	317	309.00
02044550	Beaver Pond Creek at Route 612 near Rawlings, Va.	365908	0774801	9.28	--
02044900	Great Creek above wastewater outfall near McKinney, Va.	365852	0774427	3.52	--

Table 2. Drainage areas of streams tributary to the North Atlantic Slope, South Atlantic Slope, and Ohio River Basins in and around Virginia. — Continued[dd, degrees; mm, minutes; ss, seconds; mi², square miles; --, not determined; *, previous site location]

Station identification number	Stream name and location	Latitude (ddmmss)	Longitude (ddmmss)	Drainage area	
				Current (mi ²)	Previous (mi ²)
02045000	Nottoway River at Route 1 near McKenney, Va.	365646	0774354	356	362.00
02045200	Waqua Creek at Route 606 near Alberta, Va.	365508	0775310	15.2	15.00
02045275	Sturgeon Creek tributary 1 near Alberta, Va.	365136	0775004	1.54	1.68
02045500	Nottoway River at Route 301 near Stony Creek, Va.	365401	0772359	577	579.00
02045800	White Oak Creek at Route 620 near Hebron, Va.	370741	0774853	6.10	5.94
02046000	Stony Creek at Route 1 near Dinwiddie, Va.	370402	0773609	113	112.00
02046200	Millrun Branch at Route 40 near McKenney, Va.	365648	0773440	2.23	2.29
02046250	Stony Creek above wastewater outfall at Stony Creek, Va.	365654	0772323	237	236
02046400	Jones Hole Swamp tributary at Route 35 near Carson, Va.	370414	0772029	3.08	3.02
02046480	Hunting Quarter Swamp at Route 735 near Sussex, Va.	365325	0771723	9.48	9.25
02046500	Anderson Branch at Route 40 at Sussex, Va.	365511	0771544	4.99	5.35
02046700	Raccoon Creek at Route 608 near Sebrell, Va.	364812	0771227	62.4	65.00
02046750	Three Creek at Route 616 near Emporia, Va.	364326	0773112	67.1	67.20
02046800	Three Creek tributary at Route 58 at Drewryville, Va.	364137	0772057	1.06	1.25
02046830	Applewhite Swamp at Route 612 near Drewryville, Va.	364337	0772102	5.18	5.96
02046900	Musgrave Branch at Route 58 near Drewryville, Va.	364214	0771628	1.96	1.99
02047000	Nottoway River above Route 653 near Sebrell, Va.	364614	0770958	1441	1421.00
02047050	Assamoosick Swamp at Route 40 near Homeville, Va.	365831	0770910	21.7	22.00
02047100	Assamoosick Swamp at Route 35 near Sebrell, Va.	364623	0770556	86.0	86.40
02047300	Nottoway Swamp at Route 611 near Story, Va.	364323	0765942	12.1	12.20
02047360	Mill Creek at Route 684 near Sunbeam, Va.	363413	0770218	23.9	23.70
02047400	Blackwater Swamp (River) at Route 625 near Disputanta, Va.	370803	0771229	72.0	75.60
02047420	Warwick Swamp at Route 613 near Disputanta, Va.	370535	0770907	38.0	38.20
02047440	Otterdam Swamp at Route 40 near Waverly, Va.	370458	0770318	21.6	22.40
02047460	Pigeonroost Swamp at Route 618 near Elberon, Va.	370636	0765341	5.84	5.98
02047480	Cypress Swamp at Route 31 near Dendron, Va.	370319	0765514	54.2	54.40
02047500	Blackwater River at Route 617 near Dendron, Va.	370131	0765229	290	294.00
02047520	Rattlesnake Swamp at Route 625 at Raynor, Va.	365731	0764624	40.1	40.30
02048000	Blackwater River at Route 460 at Zuni, Va.	365206	0765006	451	456.00
02048400	Seacock Creek (Swamp) at Route 618 near Ivor, Va.	365529	0765547	28.0	27.40
02048460	Round Hill Swamp at Route 614 near Berlin, Va.	365103	0765620	25.2	25.60
02048500	Seacock Swamp (Creek) at Route 635 near Berlin, Va.	364916	0765259	102	102.00
02049000	Blackwater River at Route 603 near Burdette, Va.	364816	0765144	578	576.00
02049500	Blackwater River near Franklin, Va.	364546	0765354	613	617.00
02049700	Cypress Swamp at Route 635 near Burdette, Va.	364430	0765617	8.43	8.55

Table 2. Drainage areas of streams tributary to the North Atlantic Slope, South Atlantic Slope, and Ohio River Basins in and around Virginia. — Continued[dd, degrees; mm, minutes; ss, seconds; mi², square miles; --, not determined; *, previous site location]

Station identification number	Stream name and location	Latitude (ddmmss)	Longitude (ddmmss)	Drainage area	
				Current (mi ²)	Previous (mi ²)
02050050	Blackwater River tributary 1 at Route 189 near Holland, Va.	363845	0765128	2.72	2.76
02050113	Quaker Swamp at Route 58 near Lummis, Va.	364143	0764334	3.47	4.02
02050115	Chapel Swamp at Route 664 near Somerton, Va.	363435	0764827	19.4	17.90
02050130	Beaverdam Creek at Route 668 near Factory Hill near Cleopus, Va.	363307	0765030	8.77	9.17
0205013280	Somerton Creek at Va.-N.C. State line near Riverdale, Va.	363307	0765353	115	96.26
02050400	North Meherrin River at Route 360 near Briery, Va.	370421	0782744	1.22	1.19
02050500	North Meherrin River at Route 687 near Keysville, Va.	370306	0782519	9.06	9.20
02051000	North Meherrin River at Route 40 near Lunenburg, Va.	365951	0782059	56.0	55.60
02051100	South Meherrin River at Route 49 near Chase City, Va.	365135	0782521	27.8	27.6
02051175	Meherrin River at Route 636 near North View, Va.	364804	0781003	306	305.
02051200	Flat Rock Creek at Route 647 near Kenbridge, Va.	365359	0780721	21.5	21.5
02051218	Flat Rock Creek at Route 612 near Bagleys Mills, Va.	364941	0780627	41.0	--
02051300	Evans Creek at Route 623 near Brodnax, Va.	364408	0775733	14.7	14.60
02051400	Saddletree Creek at Route 58 near Lawrenceville, Va.	364352	0775438	.87	.87
02051500	Meherrin River at Route 715 near Lawrenceville, Va.	364301	0774954	552	552.00
02051600	Great Creek at Route 763 (old Route 618) near Cochran, Va.	364847	0775518	30.8	30.70
02051625	Roses Creek at Route 646 near Alberta, Va.	364844	0775256	5.25	--
02051650	Rocky Run at Route 641 near Dolphin, Va.	364736	0774934	1.42	1.41
02051700	Rocky Run at Route 642 at Lawrenceville, Va.	364615	0775027	6.13	6.16
02051715	Roses Creek at Route 58 at Lawrenceville, Va.	364457	0775015	27.3	--
02052000	Meherrin River at Route 301 at Emporia, Va.	364125	0773226	744	747.00
02052100	Rattlesnake Creek at Route 46 near Ankum, Va.	363649	0775224	5.48	6.55
02052500	Fountains (Fontaine) Creek at Route 603 near Brink, Va.	363656	0774159	68.7	65.20
02053000	Fountains (Fontaine) Creek at Route 639 near Emporia, Va.	363811	0773509	95.9	96.00
02053030	Mill Swamp at Route 660 near Claesville, Va.	363633	0772909	10.5	10.40
02053056	Meherrin River at Route 195 near Margarettsville, N.C.	363241	0771759	1093	1074.00
02053074	Tarrara Creek at Route 35 at Boykins, Va.	363521	0771202	58.4	57.50
02053800	South Fork Roanoke River at Route 637 near Shawsville, Va.	370824	0801559	109	110.00
02054120	North Fork Roanoke River along Route 723 near Lusters Gate, Va.	371318	0802155	44.2	44.60
02054190	Wilson Creek at Route 603 at Ellett, Va.	371122	0802130	13.0	--
02054195	North Fork Roanoke River at Route 603 at Ellett, Va.	371112	0802109	64.4	51.1
02054500	Roanoke River at Route 603 at Lafayette, Va.	371411	0801233	254	257.00
02054510	Roanoke River near Wabun, Va.	371448	0800954	270	273
02054530	Roanoke River at Route 1154 at Glenvar, Va.	371604	0800822	281	284
02054660	Mason Creek along Route 311 below dam near Bennett Springs, Va.	372155	0800304	15.3	--

Table 2. Drainage areas of streams tributary to the North Atlantic Slope, South Atlantic Slope, and Ohio River Basins in and around Virginia. — Continued

[dd, degrees; mm, minutes; ss, seconds; mi², square miles; --, not determined; *, previous site location]

Station identification number	Stream name and location	Latitude (ddmmss)	Longitude (ddmmss)	Drainage area	
				Current (mi ²)	Previous (mi ²)
02054750	Roanoke River at Route 117 at Roanoke, Va.	371617	0800028	352	--
02055000	Roanoke River at Walnut Street at Roanoke, Va.	371530	0795619	384	395.00
02055080	Roanoke River at Thirteenth Street Bridge at Roanoke, Va.	371551	0795455	390	--
02055100	Tinker Creek below railroad near Daleville, Va.	372503	0795607	11.7	11.70
02055370	Carvin Creek at Route 115 at Roanoke, Va.	371916	0795603	28.8	--
--	Carvin Creek mouth near Hollins, Va.	371911	0795546	28.9	28.53
02055500	Tinker Creek at Roanoke, Va.	371702	0795511	66.8	70.00
02055510	Tinker Creek at Walnut Street near Vinton, Va.	371643	0795501	66.9	--
02055515	Lick Run above wastewater outfall at Roanoke, Va.	371620	0795607	7.59	--
0205551610	Tinker Creek at Wise Avenue near Vinton, Va.	371643	0795445	77.9	--
0205551810	Laymantown Creek at Route 460 near Bonsack, Va.	372023	0795108	4.70	--
02055520	Glade Creek above mouth at Vinton, Va.	371646	0795424	33.0	--
--	Tinker Creek at mouth at Roanoke, Va.	371559	0795417	112	103.85
02056000	Roanoke River below powerplant at Niagara, Va.	371518	0795217	509	512.00
02056500	Back Creek at Route 220 near Roanoke, Va.	371045	0795609	40.7	43.00
02056650	Back Creek at Route 660 near Dundee, Va.	371340	0795205	55.8	56.80
02056700	Beaverdam Creek at Route 757 near Hardy, Va.	371329	0794522	26.5	24.8
02056800	South Fork Blackwater River above wastewater outfall at Callaway, Va.	370039	0800252	21.9	--
02056900	Blackwater River at Route 122 near Rocky Mount, Va.	370243	0795039	115	115.00
02056950	Maggodee Creek along Route 220 near Boones Mill, Va.	370757	0795819	11.1	11.0
02057000	Blackwater River near Union Hall, Va.	370236	0794106	208	208.00
02057050	Gills Creek at Route 122 near Burnt Chimney, Va.	370732	0794657	21.8	21.8
02057500	Roanoke River near Toshes, Va.	370204	0793117	1017	1020.00
02057600	Pigg River at Route 40 near Rocky Mount, Va.	365835	0795531	40.5	40.5
02057620	Stony Creek below Route 864 at Ferrum, Va.	365535	0800035	2.42	--
02057650	Pigg River above wastewater outfall at Rocky Mount, Va.	365902	0795252	68.9	--
02057695	Powder Mill Creek tributary 1 at Rocky Mount, Va.	370033	0795328	.053	--
02057700	Powder Mill Creek at Route 220 at Rocky Mount, Va.	370027	0795224	.78	.64
02057750	Little Chestnut Creek near Sydnorsville, Va.	365420	0795054	15.4	15.5
02058000	Snow Creek at Route 969 at Sago, Va.	365351	0793904	59.6	60.00
02058100	Turkeycock Creek at Route 969 at Sago, Va.	365254	0793751	29.6	29.5
02058400	Pigg River above Route 40 near Sandy Level, Va.	365646	0793129	351	350.00
02058500	Pigg River along Route 605 near Toshes, Va.	365902	0793051	382	394.00
02059000	Roanoke River at Route 1109 near Gretna, Va.	370047	0792823	1418	1430.00
02059400	Leesville Lake at dam near Leesville, Va.	370536	0792408	1474	1505.

Table 2. Drainage areas of streams tributary to the North Atlantic Slope, South Atlantic Slope, and Ohio River Basins in and around Virginia. — Continued[dd, degrees; mm, minutes; ss, seconds; mi², square miles; --, not determined; *, previous site location]

Station identification number	Stream name and location	Latitude (ddmmss)	Longitude (ddmmss)	Drainage area	
				Current (mi ²)	Previous (mi ²)
02059420	North Fork Goose Creek at Route 460 near Montvale (Thaxton), Va.	372214	0794154	31.5	31.50
02059440	South Fork Goose Creek tributary 1 near Villamont, Va.	372352	0794507	.30	--
02059450	South Fork Goose Creek at Route 607 at Montvale, Va.	372247	0794349	11.0	7.56
02059460	Shockoe Creek at Route 755 near Irving, Va.	371847	0794033	4.03	4.02
02059485	Goose Creek at Route 747 near Bunker Hill, Va.	371559	0793516	125	--
02059500	Goose Creek above Route 732 near Huddleston, Va.	371024	0793113	188	188.00
02060000	Goose Creek at Route 626 at Huddleston, Va.	370926	0792832	213	218.00
02060400	Sycamore Creek at Route 643 at Sycamore, Va.	370126	0792123	5.27	5.30
02060500	Roanoke (Staunton) River at Route 29 (Alternate) at Altavista, Va.	370617	0791743	1782	1789.00
02060900	Roaring Run above Gunnoe Sausage at Cifax, Va.	372429	0792410	.70	--
02061000	Big Otter River (Otter River) at Route 221 near Bedford, Va.	372151	0792509	114	116.00
02061150	Chestnut Branch near Forest at Goode, Va.	372211	0792315	1.54	1.65
02061200	Little Otter River at Route 122 near Bedford, Va.	372142	0793002	18.3	18.3
02061300	Nininger Creek at Route 43 near Forest, Va.	371627	0792930	4.87	4.77
02061460	Buffalo Creek above Route 460 at New London, Va.	371819	0791723	5.93	--
--	Buffalo Creek at mouth near Evington, Va.	371409	0791935	25.1	26.86
02061500	Big Otter River (Otter River) at Route 682 near Evington, Va.	371231	0791813	315	320.00
02062000	Big Otter River above Tardy Branch near Altavista, Va.	371106	0791644	362	372.00
02062300	Seneca Creek at Route 633 near Long Island, Va.	370624	0790721	52.3	52.0
02062500	Roanoke (Staunton) River above Route 501 at Brookneal, Va.	370229	0785701	2404	2415.00
02063000	Caldwells Creek (East Fork Falling River) at Route 719 near Appomattox, Va.	371941	0785119	3.85	5.10
02063400	Reddy Creek at Route 679 near Spring Mills, Va.	371655	0785413	12.7	12.6
02063460*	Falling River at Route 650 near Spring Mills, Va.	371546	0785400	42.1	--
02063460	Falling River at Route 650 near Spring Mills, Va.	371550	0785356	42.2	--
02063500	Falling River (East Fork Falling River) above Route 646 at Spring Mills, Va.	371441	0785506	49.3	52.20
02063600	Button Creek at Route 24 near Rustburg, Va.	371726	0790409	.57	.59
02063700	Button Creek tributary at Route 24 near Rustburg, Va.	371706	0790426	.15	.16
02063780	Mollys Creek at wastewater outfall at Rustburg, Va.	371625	0790557	.14	.16
02063800	Mollys Creek above wastewater outfall near Winfall, Va.	371206	0790317	13.2	--
02064000	Falling River at Route 643 near Naruna, Va.	370737	0785735	165	173.00
02064500	Little Falling River at Route 618 at Hat Creek, Va.	370751	0785449	39.2	43.00
02065000	Falling River below Hat Creek near Brookneal, Va.	370455	0785606	222	228.00
02065010	Phelps Creek at Brookneal diversion near Brookneal, Va.	370407	0785705	3.92	--
02065100	Snake Creek at Route 501 near Brookneal, Va.	370043	0785751	1.65	1.68
02065200	Roanoke (Staunton) River at Route 620 at Clarkton, Va.	365839	0785349	2682	2691.00

Table 2. Drainage areas of streams tributary to the North Atlantic Slope, South Atlantic Slope, and Ohio River Basins in and around Virginia. — Continued

[dd, degrees; mm, minutes; ss, seconds; mi², square miles; --, not determined; *, previous site location]

Station identification number	Stream name and location	Latitude (ddmmss)	Longitude (ddmmss)	Drainage area	
				Current (mi ²)	Previous (mi ²)
02065260	Turnip Creek at Route 619 near Aspen, Va.	370053	0785104	31.5	--
02065300	Right Hand Fork at Route 727 near Appomattox, Va.	371613	0784913	2.20	2.08
02065400	Big Cub Creek at Route 701 near Madisonville, Va.	371214	0784404	37.2	37.20
02065500	Cub Creek at Route 40 at Phenix, Va.	370446	0784549	97.6	98.00
02066000	Roanoke (Staunton) River at Route 746 at Randolph, Va.	365455	0784427	2966	2977.00
02066450	Roanoke Creek (Little Roanoke Creek) at Route 40 near Charlotte Court House, Va.	370328	0783502	42.7	42.7
02066455	Ash Camp Creek at Route 654 near Eureka, Va.	370158	0783350	6.91	--
02066500	Roanoke Creek at Route 612 at Saxe, Va.	365550	0783955	135	135.00
02066520	Twittys Creek above wastewater outfall at Drakes Branch, Va.	365923	0783612	23.2	--
02066525	Twittys Creek at Route 637 at Saxe, Va.	365543	0783941	33.1	--
02066600	Sandy Creek at Route 608 near Wylliesburg, Va.	365036	0783829	8.97	8.84
02067000	Roanoke (Staunton) River at Route 360 near Clover, Va.	365018	0784001	3227	3230.00
02067020	Buffalo Creek at Route 608 near Red Oak, Va.	364804	0783833	5.62	--
02067250	Difficult Creek at Route 716 near Dryburg, Va.	364514	0784227	68.8	--
--	Difficult Creek at mouth near Dryburg, Va.	364443	0784117	71.2	71.12
02067810	Maple Swamp Branch at Route 58 near Meadows of Dan, Va.	364410	0802627	.46	.49
02067820	Townes Reservoir near Kibler, Va.	364110	0802549	33.5	33.
02069550	North Fork South Mayo River at Route 58 at Stuart, Va.	363903	0801707	10.1	10.0
02069600	Anglin Branch at Route 58 near Stuart, Va.	363815	0801254	3.39	3.10
02069700	South Mayo River at Route 700 near Nettleridge, Va.	363415	0800746	85.5	84.60
02069800	Grassy Branch at Route 721 near Sanville, Va.	364203	0800547	3.24	3.29
02070000	North Mayo River below Route 629 near Spencer, Va.	363405	0795914	108	108.00
02071530	Smith River at Smith River Church (Route 798) near Woolwine, Va.	364642	0801457	26.3	26.7
02071600	Smith River at Route 704 near Charity, Va.	364818	0801203	80.0	79.7
02071800	Nicholas Creek at Route 605 near Ferrum, Va.	365211	0800309	12.1	12.20
02072000	Smith River below Philpott Dam near Philpott, Va.	364650	0800129	215	216.00
02072500	Smith River at Route 666 at Bassett, Va.	364612	0800003	259	259.00
02072530	Blackberry Creek near Sanville, Va.	364442	0800447	3.98	--
02072600	Reed Creek at Route 609 near Collinsville, Va.	364517	0795447	12.5	12.4
02072950	Grassy Creek near Fieldale, Va.	364007	0795547	4.11	--
02072998	Smith River at Martinsville Dam at Martinsville, Va.	363955	0795300	379	374.
02073000	Smith River below Route 58 at Martinsville, Va.	363940	0795250	379	380.00
02073200	Marrowbone Creek tributary at Ridgeway, Va.	363429	0795203	.020	--
02073420	Mill Creek near Axton, Va.	364122	0794434	4.52	4.5
02073500	Leatherwood Creek at Route 650 near Martinsville, Va.	363810	0794729	68.4	68.00

Table 2. Drainage areas of streams tributary to the North Atlantic Slope, South Atlantic Slope, and Ohio River Basins in and around Virginia. — Continued[dd, degrees; mm, minutes; ss, seconds; mi², square miles; --, not determined; *, previous site location]

Station identification number	Stream name and location	Latitude (ddmmss)	Longitude (ddmmss)	Drainage area	
				Current (mi ²)	Previous (mi ²)
02074083	Dan River above Cascade Creek near Eden, N.C.	363114	0793844	1729	1712
02074450	Sandy River at Route 612 near Swansonville, Va.	364423	0793653	24.2	24.1
02074500	Sandy River above Route 863 near Danville, Va.	363710	0793015	111	112.00
02074600	Dry Fork at Route 866 above mouth near Mount Hermon, Va.	363955	0792747	2.74	2.64
02074680	Sandy Creek at Route 746 near Danville, Va.	363803	0792743	18.8	--
02075000	Dan River at railroad at Danville, Va.	363515	0792254	2060	2050.00
02075020	Fall Creek at Route 719 near Danville, Va.	364042	0792412	5.37	5.39
02075029	Fall Creek along Route 730 at Danville, Va.	363544	0792158	35.9	--
02075045	Dan River at wastewater outfall near Danville, Va.	363346	0792211	2116	2105
0207509125	Hogans Creek tributary above Goodyear Plant near Danville, Va.	363231	0792221	.89	--
02075191	Cane Creek at Lorillard Tobacco outfall near Ringgold, Va.	363600	0791933	3.86	3.94
02075198	Dan River at Route 62 at Milton, N.C.	363228	0791252	2339	2322.00
02075275	Sandy Creek (River) at Route 58 near Ringgold, Va.	363451	0791330	18.3	18.2
02075350	Powells Creek at Route 58 near Turbeville, Va.	363451	0791119	.29	.28
02075390	Double Creek at Route 688 near Sutherlin, Va.	363755	0791034	12.2	--
02075450	Little Winns Creek at Route 58 near Turbeville, Va.	363521	0790519	2.23	2.30
02075475	Byrds Branch at Route 810 near Paces, Va.	363715	0790704	2.08	--
02075500	Dan River at Route 658 at Paces, Va.	363832	0790522	2587	2550.00
02075600	Birch Creek at Route 729 near Birch, Va.	364212	0791302	19.8	19.8
02075690	Birch Creek tributary 1 at Route 683 near Elmo, Va.	364144	0790413	7.12	--
02075700	Birch Creek at Route 659 near Paces, Va.	364020	0790339	62.3	--
02075900	Lawsons Creek at Route 658 at Turbeville, Va.	363640	0790127	8.64	8.70
02076000	Dan River at railroad at South Boston, Va.	364137	0785408	2762	2730.00
02076100	Wet Sleeve Creek at Banister near Swansonville, Va.	364618	0793251	3.76	--
02076200	Bearskin Creek at Route 57 near Chatham, Va.	365031	0792904	3.99	4.06
02076280	Dry Fork above Vulcan Materials at Dry Fork, Va.	364440	0792347	2.56	--
02076300	Banister River at Route 29 near Chatham, Va.	364641	0792332	84.8	84.8
02076340	Cherrystone Creek above Tanyard Branch near Chatham, Va.	364821	0792243	34.3	--
02076350	Tanyard Branch at mouth at Chatham, Va.	364823	0792243	2.14	--
02076353	Cherrystone Creek at Route 703 near Chatham, Va.	364851	0792103	39.0	--
02076400	Whitethorn Creek tributary at Route 29 at Gretna, Va.	365601	0792209	2.02	1.93
02076430	Whitehorn Creek at Route 685 near Sonans, Va.	365330	0791759	25.3	--
02076500	Georges Creek at Route 40 near Gretna, Va.	365612	0791841	9.18	9.24
02076610	Stinking River at Route 927 near Mount Airy, Va.	365528	0791352	22.2	--
02076650	Banister River at Route 640 near Mount Airy, Va.	365440	0791059	269	269.

Table 2. Drainage areas of streams tributary to the North Atlantic Slope, South Atlantic Slope, and Ohio River Basins in and around Virginia. — Continued

[dd, degrees; mm, minutes; ss, seconds; mi², square miles; --, not determined; *, previous site location]

Station identification number	Stream name and location	Latitude (ddmmss)	Longitude (ddmmss)	Drainage area	
				Current (mi ²)	Previous (mi ²)
02076700	Blacks Creek at Route 40 near Mount Airy, Va.	365641	0790955	3.54	3.44
02076770	Sandy Creek at Route 832 at Meadville, Va.	364932	0790138	99.1	99.0
--	Sandy Creek at mouth near Meadville, Va.	364937	0790126	99.3	98.16
02077000	Banister River at Route 360 (Business) at Halifax, Va.	364635	0785457	547	547.00
02077500	Hyco River at Route 501 near Denniston, Va.	363517	0785355	288	289.00
02078000	Hyco River at Route 738 near Omega, Va.	363810	0784819	412	413.00
--	Hyco River at mouth near Midway, Va.	364103	0784351	428	--
02078300	Aarons Creek at Route 604 near Nelson, Va.	363513	0784259	41.2	41.50
02078400	Bluestone Creek at Route 699 near Orgainville, Va.	364349	0783657	47.8	47.8
02079000	Roanoke River at Route 58 at Clarksville, Va.	363741	0783303	7393	7320.00
02079241	Island Creek Reservoir at Island Creek Dam near Clarksville, Va.	363257	0782759	67.7	--
02079500	Roanoke River below Kerr Dam at Buggs Island, Va.	363612	0781752	7866	7780.00
02079640	Allen Creek at Route 58 near Boydton, Va.	364047	0781936	53.5	53.40
02079660	Jolly Hollow Branch at Route 92 at Boydton, Va.	364039	0782312	3.64	3.60
02079665	Cox Creek at Route 669 at Baskerville, Va.	364059	0781614	11.7	11.5
02079666	Flat Creek above wastewater outfall above Route 642 near South Hill, Va.	364204	0780755	1.30	--
0207966605	Flat Creek at Route 642 near South Hill, Va.	364148	0780754	1.75	--
0207966620	Flat Creek at Route 631 near Smiths Crossroads, Va.	363929	0780922	9.88	--
0207966625	Flat Creek at Route 630 near Smiths Crossroads, Va.	363756	0781016	15.3	--
0207966630	Parham Creek at Route 629 near Smiths Crossroads, Va.	363850	0780852	3.00	--
02079720	Smith Creek tributary at Route 1 near South Hill, Va.	363351	0781209	.47	.39
02079740	Great Creek at Route 620 near Marengo, Va.	363623	0780504	7.73	7.79
0207974250	Great Creek at Route 619 near Bracey, Va.	363536	0780526	17.0	--
02113540	Birds Branch tributary 1 at wastewater outfall near Ararat, Va.	363818	0803204	.045	--
02113541	Birds Branch tributary 2 at wastewater outfall near Ararat, Va.	363816	0803229	.054	--
02113550	Ararat River at Route 749 near Ararat, Va.	363407	0803302	21.8	21.7
02113715	Pauls Creek at Fancy Gap, Va.	363952	0804132	.050	--
03161000	South Fork New River below Route 16 near Jefferson, N.C.	362335	0812425	205	205.00
03162700	Wallen Creek at Route 16 near Trout Dale, Va.	363800	0812409	2.29	2.23
03162705	Peggies Branch at wastewater outfall near Oak Hill, Va.	363608	0812021	1.52	--
03162750	Fox Creek above Route 16 at Trout Dale, Va.	364122	0812551	14.1	--
03162800	Mill Creek at Route 16 near Trout Dale, Va.	364006	0812423	4.70	5.32
03162810	Saddle Creek tributary at Route 58 near Independence, Va.	363711	0811254	.37	.39
03162852	Peach Bottom Creek at Route 697 near Independence, Va.	363601	0810640	20.8	--
03163000	New River above Kings Branch near Baywood, Va.	363630	0810239	1004	1000.00

Table 2. Drainage areas of streams tributary to the North Atlantic Slope, South Atlantic Slope, and Ohio River Basins in and around Virginia. — Continued[dd, degrees; mm, minutes; ss, seconds; mi², square miles; --, not determined; *, previous site location]

Station identification number	Stream name and location	Latitude (ddmmss)	Longitude (ddmmss)	Drainage area	
				Current (mi ²)	Previous (mi ²)
03163480	Stone Creek above Route 659 at Elk Creek, Va.	364327	0811044	2.33	--
03164000	New River at Route 94 near Galax, Va.	363850	0805844	1141	1131.00
03164100	Bull Run at wastewater outfall near Stevens Creek, Va.	364228	0810210	.39	--
03164150	Eagle Bottom Creek at Fries diversion at Fries, Va.	364308	0805904	3.04	--
03164500	New River at railroad near Grayson, Va.	364535	0805722	1174	1160.00
03165000	Chestnut Creek above Route 89 at Galax, Va.	363845	0805509	39.4	39.40
03165200	Mill Creek tributary at Route 58 at Galax, Va.	364038	0805401	1.07	1.05
03165360	Pine Branch below Route 683 near Woodlawn, Va.	364433	0804814	1.10	--
03165500	New River at Ivanhoe, Va.	365005	0805709	1350	1340.00
03165700	Cripple Creek at Route 749 at Cedar Springs, Va.	364931	0811644	11.2	11.30
03165800	Sugar Run at Route 684 near Speedwell, Va.	364945	0811009	3.73	3.57
03166000	Cripple Creek at Route 94 near Ivanhoe, Va.	365135	0805849	136	148.00
03166100	Buddle Branch along Route 636 at Austinville, Va.	365017	0805459	.87	--
03166120	Buddle Branch above wastewater outfall at Austinville, Va.	365107	0805428	2.25	--
0316612010	Bunddle Branch tributary 1 near Austinville, Va.	365121	0805417	2.21	--
03166400	Stony Fork at Route 52 near Favonia, Va.	370030	0811126	7.78	7.77
03166550	South Fork Reed Creek tributary at wastewater outfall near Rural Retreat, Va.	365330	0811514	1.83	--
03166765	Reed Creek tributary above wastewater outfall near Max Meadows, Va.	365627	0805821	1.34	--
03166770	Reed Creek tributary to tributary near Max Meadows, Va.	365620	0805702	.78	--
03166775	Reed Creek tributary to tributary above wastewater outfall near Max Meadows, Va.	365647	0805554	2.59	--
03166800	Glade Creek at Route 629 at Grahams Forge, Va.	365551	0805401	7.15	7.15
03167000	Reed Creek at Route 619 at Grahams Forge, Va.	365622	0805312	258	247.00
03167100	McGavock Creek at wastewater outfall near Grahams Forge, Va.	365758	0805106	.11	--
03167125	Pine Run above mouth near Allisonia, Va.	365617	0804734	17.0	--
03167150	Big Reed Island Creek at Olde Mill Golf Resort near Laurel Fork, Va.	364120	0803141	20.1	--
03167200	Laurel Fork at Route 738 near Laurel Fork, Va.	364434	0803148	28.3	28.3
03167300	Mira Fork tributary at Route 221 near Dugspur, Va.	365016	0803443	.66	.62
03167500	Big Reed Island Creek below Route 693 near Allisonia, Va.	365320	0804339	267	278.00
03167600	East Fork Little Reed Island Creek tributary 1 at Fancy Gap, Va.	364000	0804142	.079	--
03167608	East Fork Little Reed Island Creek above I-77 near Fancy Gap, Va.	364027	0804241	3.24	3.21
03167610	East Fork Little Reed Island Creek tributary 2 at campground near Fancy Gap, Va.	364026	0804141	.20	--
03167700	Beaverdam Creek at Route 1009 at Hillsville, Va.	364605	0804332	4.47	4.75
03168000	New River along Route 653 at Allisonia, Va.	365615	0804444	2212	2202.00
03168450	Peak Creek at Pulaski, Va.	370250	0804731	32.9	--
03168480	Tract Fork at mouth at Pulaski, Va.	370250	0804713	25.5	--

Table 2. Drainage areas of streams tributary to the North Atlantic Slope, South Atlantic Slope, and Ohio River Basins in and around Virginia. — Continued

[dd, degrees; mm, minutes; ss, seconds; mi², square miles; --, not determined; *, previous site location]

Station identification number	Stream name and location	Latitude (ddmmss)	Longitude (ddmmss)	Drainage area	
				Current (mi ²)	Previous (mi ²)
03168500*	Peak Creek below Route 11 at Pulaski, Va.	370249	0804647	60.6	58.3
03168500	Peak Creek below Route 11 at Pulaski, Va.	370250	0804634	60.8	60.90
03168600	Peak Creek tributary at Route 636 near Pulaski, Va.	370419	0804624	.55	.61
03168750	Thorne Springs Branch at Route 11 near Dublin, Va.	370530	0804433	4.70	4.77
03168874	Goose Creek above mouth near Wurno, Va.	370300	0804241	3.54	--
03169150	Pine Creek at Route 682 near Floyd, Va.	365703	0801702	10.8	10.700
03169200	West Fork Dodd Creek tributary at Route 8 near Floyd, Va.	365221	0801959	1.48	.96
03169220	Dodd Creek at wastewater outfall at Floyd, Va.	365438	0802019	19.2	19.25
03169350	Brush Creek at Route 615 at Terrys Fork, Va.	370244	0801644	1.40	1.40
03169500	Little River at Route 787 near Copper Valley, Va.	370000	0803109	250	239.00
03170000	Little River at Route 693 at Graysontown (Graysonton), Va.	370215	0803324	309	300.00
03170100	Mill Creek below Route 8 at Riner, Va.	370323	0802638	2.17	--
03170500	Little River Reservoir near Radford, Va.	370439	0803421	351	337.00
03171000	New River below Route 11 at Radford, Va.	370830	0803409	2767	2748.00
03171150	Crab Creek tributary at Route 11 near Christiansburg, Va.	370756	0802731	1.18	1.23
03171170	Crab Creek at wastewater outfall near Christiansburg, Va.	370926	0802814	13.7	--
03171215	Stroubles Creek at Route 657 near Prices Fork, Va.	371158	0802700	7.18	--
03171220	Stroubles Creek at Route 705 (old Route 659) near Radford, Va.	371102	0803003	12.0	--
03171225	Slate Branch at Route 705 (old Route 659) near Christiansburg, Va.	371045	0802952	9.16	--
03171350	Back Creek at Route 100 near Highland, Va.	371001	0804207	21.2	--
03171405	Back Creek at Route 600 at Parrott, Va.	371210	0803641	40.2	--
03171500	New River at Route 730 at Eggleston, Va.	371722	0803700	2961	2941.00
03171600	Little Stony Creek at Route 460 at Pembroke, Va.	371910	0803824	23.8	24.00
03171690	Crab Orchard Creek tributary at Bland, Va.	370608	0810644	1.62	--
03171700	Crab Orchard Creek at Route 605 near Bland, Va.	370536	0810636	15.7	--
03171800	Helveys Mill Creek tributary 1 at Route 42 at Point Pleasant, Va.	370724	0810115	.39	.38
03171900	Kimberling Creek at Route 612 near Holly Brook, Va.	371038	0805853	27.2	--
03171950	Kimberling Creek at Route 42 near Mechanicsburg, Va.	370955	0805359	90.0	--
03172500	Walker Creek at Route 660 at Staffordsville, Va.	371430	0804239	275	277.00
03173000	Walker Creek below Route 100 at Bane, Va.	371605	0804234	299	305.00
03173800	Stony Creek at Kimballton, Va.	372203	0804032	45.8	--
03174500	Wolf Creek near Shawver Mill, Va.	370805	0812126	35.2	36.00
03174600	Wolf Creek above wastewater outfall near Bastian, Va.	371038	0810909	61.4	--
03174680	Hunting Camp Creek at wastewater outfall at Bastian, Va.	370925	0810854	29.9	--
03175000	West Fork Cove Creek below Oneida Branch near Bluefield, Va.	371103	0811947	4.68	5.50

Table 2. Drainage areas of streams tributary to the North Atlantic Slope, South Atlantic Slope, and Ohio River Basins in and around Virginia. — Continued[dd, degrees; mm, minutes; ss, seconds; mi², square miles; --, not determined; *, previous site location]

Station identification number	Stream name and location	Latitude (ddmmss)	Longitude (ddmmss)	Drainage area	
				Current (mi ²)	Previous (mi ²)
03175100	Cox Branch above Tazewell Reservoir near Gratton, Va.	370912	0812450	1.90	2.06
03175500	Wolf Creek at Route 724 near Narrows, Va.	371820	0805059	223	223.00
03176500	New River at Route 460 at Glen Lyn, Va.	372222	0805138	3783	3768.00
03177575	Bluestone River at Shannandale near Springville, Va.	371249	0812142	10.5	--
03177620	Bluestone River at Parkview Avenue at Bluefield, Va.	371422	0811641	20.4	--
03177680	Wrights Valley Creek at mouth at Bluefield, Va.	371458	0811716	8.42	--
03177695	Beaverpond Creek at mouth at Bluefield, Va.	371518	0811633	10.1	--
03177700	Bluestone River above wastewater outfall at Bluefield, Va.	371521	0811654	39.7	39.80
03177705	Neal Hollow Fork at Route 843 near Bluefield, Va.	371605	0811654	1.42	--
03177710	Bluestone River at Route 717 at Falls Mills, Va.	371617	0811817	44.3	44.20
03177715	Brush Fork at Route 717 at Falls Mill, Va.	371633	0811820	11.2	--
03177725	Mud Fork at Route 102 at Falls Mills, Va.	371631	0811841	18.3	--
03177733	Bluestone River below railroad bridge at ford at Falls Mill, Va.	371723	0811844	75.8	--
03177750	Laurel Fork at Pocahontas, Va.	371827	0812002	14.7	--
03207223	Levisa Fork at Route 460 at Oakwood, Va.	371243	0820019	28.9	29.00
0320722390	Garden Creek above Walker Branch near Page, Va.	370913	0815840	4.52	--
03207225	Garden Creek at Route 632 at Mount Heron, Va.	371117	0820007	11.3	11.30
0320722510	Garden Creek above Right Fork at Mount Herson, Va.	371120	0820015	11.3	--
03207226	Right Fork at Trivett Road at Rowe, Va.	370840	0820200	6.69	--
03207227	Right Fork at wastewater outfall near Mount Heron, Va.	371002	0820052	12.0	--
0320722750	Right Fork above Youngs Branch at Mount Heron, Va.	371056	0820029	13.9	--
--	Right Fork below Youngs Branch at Mount Heron, Va.	371056	0820029	15.5	--
03207228	Right Fork along Route 624 at Mount Heron, Va.	371116	0820017	15.6	15.70
0320722810	Right Fork at mouth at Mount Heron, Va.	371120	0820016	15.7	--
--	Garden Creek below Right Fork at Oakwood, Va.	371121	0820016	27.0	--
03207230	Garden Creek at Route 669 at Oakwood, Va.	371242	0820023	30.2	--
03207250	Dismal Creek at Route 638 at Whitewood, Va.	371408	0815126	27.8	27.80
03207280	Laurel Fork at railroad bridge at Whitewood, Va.	371401	0815144	16.6	16.60
03207289	Dismal Creek at Route 628 near Patterson, Va.	371432	0815419	54.0	--
03207295	Lower Big Branch at Route 685 near Patterson, Va.	371603	0815948	2.73	2.76
03207299	Dismal Creek above Mill Branch near Oakwood, Va.	371434	0820139	86.1	86.1
03207390	Big Prater Creek along Route 620 near Vansant, Va.	371301	0820614	10.3	10.20
03207398	Trace Fork Branch along Route 83 near Vansant, Va.	371305	0820622	9.63	9.33
03207400	Big Prater (Prater) Creek at Route 620 at Vansant, Va.	371309	0820609	20.0	19.80
03207407	Dry Fork at Route 627 at Vansant, Va.	371325	0820541	4.31	4.32

Table 2. Drainage areas of streams tributary to the North Atlantic Slope, South Atlantic Slope, and Ohio River Basins in and around Virginia. — Continued[dd, degrees; mm, minutes; ss, seconds; mi², square miles; --, not determined; *, previous site location]

Station identification number	Stream name and location	Latitude (ddmmss)	Longitude (ddmmss)	Drainage area	
				Current (mi ²)	Previous (mi ²)
03207438	Slate Creek above wastewater outfall near Stacy, Va.	371845	0815835	15.3	--
03207440	Slate Creek below Twin Branch near Stacy, Va.	371845	0815842	15.3	16.10
03207450	Slate Creek at Route 1003 at Grundy, Va.	371639	0820547	40.9	41.00
03207500	Levisa Fork along Route 460 near Grundy, Va.	371752	0820733	239	235.00
03207505	Looney Creek at Route 460 near Grundy, Va.	371836	0820745	6.03	2.34
03207520	Poplar Creek at railroad near Harman Junction, Va.	371821	0820920	6.17	6.18
03207530	Bull Creek near Harman Junction, Va.	371841	0820956	12.1	9.13
03207550	Lynn Camp Creek at Route 460 near Harman Junction, Va.	371930	0820950	4.05	4.06
03207600	Home Creek at Route 700 near Big Rock, Va.	372042	0821029	12.0	12.10
03207792	Rocklick Creek at railroad at Big Rock, Va.	372121	0821121	7.82	7.73
03207800	Levisa Fork below Route 645 at Big Rock, Va.	372113	0821144	297	297.00
03207805	Conaway Creek at Route 610 at Conaway, Va.	372045	0821228	7.36	7.40
0320803170	Ball Creek above Nance White Branch near Council, Va.	370512	0820204	.92	.91
0320803180	Nance White Branch at mouth near Council, Va.	370513	0820206	1.13	1.13
03208032	Grissom Creek near Fletcher Ridge near Council, Va.	370614	0820302	.57	.56
03208033	Grissom Creek tributary near Council, Va.	370618	0820259	.87	.88
0320803350	Grissom Creek above Venia near Council, Va.	370612	0820301	1.48	1.44
03208034	Grissom Creek at Route 626 near Council, Va.	370443	0820224	2.82	2.82
032080351	Barton Fork above Jackson Fork near Council, Va.	370438	0820140	.31	.31
032080352	Jackson Fork above Barton Fork near Council, Va.	370435	0820140	.33	.33
032080353	Coon Flat Branch near Council, Va.	370441	0820148	.22	.22
0320803570	Barton Fork tributary near Council, Va.	370432	0820207	.16	.17
03208036	Barton Fork above mouth near Council, Va.	370437	0820220	1.24	1.23
03208040	Russell Fork at Route 80 at Council, Va.	370441	0820355	10.2	10.20
03208042	Big Branch below Route 672 near Council, Va.	370504	0820500	.98	.97
03208043	Russell Fork along Route 80 at Davenport, Va.	370557	0820809	16.8	16.80
03208044	Hurricane Creek above Left Fork near Davenport, Va.	370758	0820424	1.82	1.76
0320804480	Left Fork above Route 600 above Hurricane Creek near Davenport, Va.	370801	0820430	.89	.89
03208045	Parett Fletcher Branch at Route 600 near Davenport, Va.	370729	0820448	.49	.48
03208046	Hurricane Creek along Route 600 at Davenport, Va.	370637	0820741	8.89	8.84
0320804630	Left Fork Hurricane Creek above New Camp Branch near Davenport, Va.	370846	0820628	1.19	1.18
0320804670	Boyd Branch above mouth near Davenport, Va.	370754	0820659	.62	.68
0320804780	Ivy Lick Branch at Route 657 near Davenport, Va.	370716	0820724	.74	.74
03208048	Left Fork Hurricane Creek at Route 600 near Davenport, Va.	370639	0820742	6.73	6.76
0320806100	Little Indian Creek at Route 602 near Council, Va.	370255	0820502	.94	1.01

Table 2. Drainage areas of streams tributary to the North Atlantic Slope, South Atlantic Slope, and Ohio River Basins in and around Virginia. — Continued[dd, degrees; mm, minutes; ss, seconds; mi², square miles; --, not determined; *, previous site location]

Station identification number	Stream name and location	Latitude (ddmmss)	Longitude (ddmmss)	Drainage area	
				Current (mi ²)	Previous (mi ²)
0320806200	Puncheon Camp Branch at mouth near Council, Va.	370414	0820647	0.81	0.78
0320806390	Indian Creek tributary 2 at Route 602 near Duty, Va.	370455	0820831	.39	.39
03208064	Indian Creek at Route 602 at Duty, Va.	370457	0820900	10.8	11.30
0320806460	Cane Creek above tributary 2 near Duty, Va.	370316	0821040	1.73	1.73
0320806470	Cane Creek tributary 2 at mouth near Duty, Va.	370318	0821042	.46	.46
0320806600	Tiller Fork above Left Fork near Duty, Va.	370400	0820922	1.72	1.73
0320806640	Left Fork above Tiller Fork near Duty, Va.	370401	0820919	1.03	1.02
0320806680	Cane Creek tributary 3 at Route 601 at Duty, Va.	370418	0820942	.65	.64
03208067	Cane Creek along Route 601 at Duty, Va.	370450	0820912	6.85	6.95
0320807050	Big Branch at Route 80 near Murphy, Va.	370646	0821002	1.09	1.10
0320807200	Abner Branch at mouth near Murphy, Va.	370654	0821019	2.02	2.01
0320807750	Dick Branch near Murphy, Va.	371000	0820731	.13	.13
03208078	Dick Branch above Fox Creek near Murphy, Va.	370953	0820828	.66	.66
03208079	Fox Creek above Left Fork near Murphy, Va.	370943	0821020	3.63	3.68
0320807950	Left Fork at Route 619 near Murphy, Va.	370946	0821022	1.72	1.69
03208087	Pawpaw Creek above Hackney Hollow near Prater, Va.	371005	0821157	4.15	4.12
03208088	Pawpaw Creek tributary above mouth near Colley, Va.	371006	0821201	1.43	1.44
03208089	Little Pawpaw Creek at Route 605 near Colley, Va.	370957	0821218	1.38	1.39
03208090	Pawpaw Creek along Route 605 near Colley, Va.	370956	0821223	7.07	7.07
0320809400	Russell Fork at Viers near Colley, Va.	371013	0821411	85.3	85.40
03208096	Laurel Branch at Route 605 at Viers, Va.	371016	0821411	1.44	1.43
03208100	Russell Fork at Route 80 near Birchleaf, Va.	370950	0821520	87.7	87.40
03208110	Fryingpan Creek at mouth near Birchleaf, Va.	370947	0821519	26.3	26.40
03208150	Lick Creek along Route 670 at Birchleaf, Va.	371027	0821614	31.8	31.70
03208220	Russell Prater Creek at Route 83 at Prater, Va.	371251	0821202	3.11	3.11
03208240	War Fork along Route 83 at Prater, Va.	371248	0821158	5.45	5.48
03208280	Greenbrier Creek at Route 83 at Vicey, Va.	371243	0821411	9.17	9.13
03208300	Russell Prater Creek at school bridge at Haysi, Va.	371228	0821716	25.4	--
03208340	McClure Creek below Trammel Branch at Trammel, Va.	370059	0821745	3.92	--
03208364	McClure Creek above wastewater outfall at Nora, Va.	370404	0822040	21.6	--
03208365	McClure Creek (River) above Open Fork at Nora, Va.	370408	0822040	21.6	22.10
03208367	Cowan Rose Creek tributary near Nora, Va.	370126	0822239	1.25	--
03208368	Spring Fork at Ervinton High School near Nora, Va.	370255	0822136	5.11	--
03208370	Open Fork along Route 652 at Nora, Va.	370409	0822049	21.4	21.40
03208400	McClure River above Buffalo Creek at Nora, Va.	370412	0822050	43.2	46.09

Table 2. Drainage areas of streams tributary to the North Atlantic Slope, South Atlantic Slope, and Ohio River Basins in and around Virginia. — Continued

[dd, degrees; mm, minutes; ss, seconds; mi², square miles; --, not determined; *, previous site location]

Station identification number	Stream name and location	Latitude (ddmmss)	Longitude (ddmmss)	Drainage area	
				Current (mi ²)	Previous (mi ²)
03208410	Buffalo Creek at Route 63 near Nora, Va.	370447	0822059	3.06	3.06
03208420	Caney Creek at mouth at McClure, Va.	370622	0822247	28.9	28.90
03208472	McClure River at Route 63 at Clinchco, Va.	371006	0822140	96.9	--
03208500	Russell Fork below Route 63 at Haysi, Va.	371225	0821745	286	286.00
03208550	Barts Lick Creek at Route 611 at Bartlick, Va.	371434	0821911	12.2	12.10
03208670	North Fork Pound River along Route 671 at Gilley near Flat Gap, Va.	370615	0824010	11.6	11.60
03208680	North Fork of Pound (River) Lake at Pound, Va.	370727	0823752	17.3	17.20
03208700	North Fork Pound River below dam at Pound, Va.	370732	0823736	18.5	18.50
03208795	South Fork Pound River at Route 700 at Pound, Va.	370722	0823649	17.5	17.40
03208800	Pound River above Indian Creek, at Pound, Va.	370726	0823629	36.7	36.70
03208810	Indian Creek above Route 23 at Pound, Va.	370707	0823555	11.0	11.10
03208850	Pound River below Bold Camp Creek, at Pound, Va.	370719	0823555	61.2	61.20
03208865	Bad Creek along Route 23 at Pound, Va.	370837	0823716	2.01	1.98
03208870	Bad Creek tributary at Route 23 at Pound, Va.	370830	0823721	.56	.55
03208874	Right Fork Bearpen Creek at Route 630 near Pound, Va.	370950	0823442	.72	.72
03208876	Left Fork Bearpen Creek at Route 630 near Pound, Va.	370950	0823445	.65	.65
03208880	White Oak Creek tributary at Route 630 near Pound, Va.	371042	0823355	.67	.67
03208900	Pound River at Route 624 near Georges Fork, Va.	370951	0823130	80.4	82.50
03208903	Pine Creek at Route 630 near Georges Fork, Va.	371127	0823206	.67	.67
0320890450	Georges Fork at Ken-Mac near Georges Fork, Va.	370806	0823137	.98	--
0320890475	Laurel Creek near Stanley Cemetery at Georges Fork, Va.	370802	0822925	.22	.189
0320890485	Georges Fork below Laurel Creek at Georges Fork, Va.	370901	0822925	5.69	--
03208905	Georges Fork at Route 621 near Isom, Va.	371045	0822858	8.05	7.99
03208922	Cane Creek along Route 611 near Blowing Rock, Va.	371313	0822702	2.82	2.73
03208935	Cranes Nest River at Route 72 near Duncan Gap, Va.	370334	0822940	18.2	18.10
03208937	Birchfield Creek at Route 636 near Duncan Gap, Va.	370315	0823315	5.28	5.29
03208938	Dotson Creek at Route 636 near Duncan Gap, Va.	370314	0823310	9.02	9.07
03208950	Cranes Nest River below railroad near Clintwood, Va.	370726	0822620	66.5	66.50
03208990	John W. Flannagan Reservoir near Haysi, Va.	371400	0822056	221	221.00
03209000	Pound River near Haysi, Va.	371413	0822036	221	221.00
03209200	Russell Fork at Route 611 at Bartlick, Va.	371445	0821925	526	526.00
03213570	Right Fork below Straight Fork at Blackey, Va.	372253	0820000	8.76	--
03213572	Knox Creek at Route 650 at Hurley, Va.	372511	0820113	27.8	27.80
03213575	Lester Fork at Route 650 at Hurley, Va.	372508	0820117	12.0	13.7
0321357550*	Knox Creek below Pounding Mill Creek and above Halls Branch at Hurley, Va.	372534	0820127	41.4	--

Table 2. Drainage areas of streams tributary to the North Atlantic Slope, South Atlantic Slope, and Ohio River Basins in and around Virginia. — Continued[dd, degrees; mm, minutes; ss, seconds; mi², square miles; --, not determined; *, previous site location]

Station identification number	Stream name and location	Latitude (ddmmss)	Longitude (ddmmss)	Drainage area	
				Current (mi ²)	Previous (mi ²)
0321357550	Knox Creek below Pounding Mill Creek at Hurley, Va.	372539	0820127	41.6	41.6
--	Guess Fork tributary near Hurley, Va.	372653	0820007	.069	--
03213577	Kershaw Branch near Hurley, Va.	372701	0820039	.60	.60
03213578	Guess Fork at railroad near Hurley, Va.	372605	0820157	13.7	13.70
03213581	Race Fork at Route 643 near Kelsa, Va.	372618	0820244	7.32	7.32
03213584	Pawpaw Creek along Route 643 at Kelsa, Va.	372607	0820501	7.53	7.49
03213587	Left Fork along Route 645 at Kelsa, Va.	372602	0820501	9.27	9.16
0321358775	Pawpaw Creek at Route 697 at Kelsa, Va.	372649	0820329	18.3	18.19
03213590	Knox Creek at Route 697 at Kelsa, Va.	372702	0820333	84.5	84.30
03470900	Slemp Creek tributary at Route 16 near Sugar Grove, Va.	364830	0812414	.62	.36
03471100	Dickey Creek at Route 16 at Sugar Grove, Va.	364622	0812509	7.18	7.28
03471200	South Fork Holston River at Route 601 at Teas, Va.	364622	0812704	31.1	31.10
03471500	South Fork Holston River above Route 645 at Riverside near Chilhowie, Va.	364537	0813752	76.6	76.10
03472000	South Fork Holston River above Grosses Creek near Chilhowie, Va.	364435	0814119	98.1	89.50
03472150	South Fork Holston River above Damascus, Va.	364002	0814803	136	81.0
03472200	Big Laurel Creek above wastewater outfall near Mt Rogers, Va.	364115	0813253	.69	--
03472500	Beaverdam Creek above railroad at Damascus, Va.	363740	0814727	55.6	56.00
03472700	Laurel Creek at Route 718 at Vail Mills, Va.	363829	0814852	158	158
03473000	South Fork Holston River above Route 58 near Damascus, Va.	363906	0815038	303	301.00
03473500	Middle Fork Holston River at Route 679 at Groseclose, Va.	365319	0812050	7.40	7.39
03473600	Middle Fork Holston River at Route 11 near Groseclose, Va.	365310	0812224	13.3	13.30
03473650	Nicks Creek at Route 11 near Marion, Va.	365152	0812608	6.02	6.00
03473660	Bear Creek at Route 622 near Marion, Va.	365208	0812632	14.6	14.66
--	Bear Creek at mouth near Atkins, Va.	365208	0812639	14.7	14.69
03473800	Staley Creek at Route 688 near Marion, Va.	364925	0812824	8.27	8.33
03473820	Staley Creek at Lee Street at Marion, Va.	365010	0813102	14.8	14.74
03473830	Hungry Mother Creek at Route 703 near Marion, Va.	365327	0813106	7.67	--
03473840	Hungry Mother Creek tributary near Marion, Va.	365220	0813041	2.11	--
03473850	Hungry Mother Creek above wastewater outfall near Marion, Va.	365207	0813129	13.1	--
03473900	Walker Creek at Route 645 at Seven Mile Ford, Va.	365006	0813550	15.2	15.50
03474000	Middle Fork Holston River at Route 11 at Seven Mile Ford, Va.	364826	0813719	132	132.00
03474050	Middle Fork Holston River tributary 20 at Seven Mile Ford, Va.	364812	0813707	.94	--
03474450	Carlock Creek at Route 774 at Chilhowie, Va.	364829	0814020	7.15	7.25
03474500	Middle Fork Holston River at Route 762 at Chilhowie, Va.	364745	0814049	153	155.00
03474700	Hutton Creek at Route 11 near Chilhowie, Va.	364700	0814404	8.20	8.32

Table 2. Drainage areas of streams tributary to the North Atlantic Slope, South Atlantic Slope, and Ohio River Basins in and around Virginia. — Continued

[dd, degrees; mm, minutes; ss, seconds; mi², square miles; --, not determined; *, previous site location]

Station identification number	Stream name and location	Latitude (ddmmss)	Longitude (ddmmss)	Drainage area	
				Current (mi ²)	Previous (mi ²)
03474705	Hutton Creek tributary 2 near Chilhowie, Va.	364702	0814403	1.44	--
03474720	Hutton Creek at Huff Airport Road near Chilhowie, Va.	364621	0814348	11.2	10.97
03474740	Hall Creek near Emory, Va.	364623	0814853	3.40	--
03474800	Hall Creek at Route 11 near Glade Spring, Va.	364547	0814814	7.83	7.90
03474860	Tattle Branch above mouth near Old Glade Spring, Va.	364440	0814747	3.21	--
03474900	Byers Creek at Route 735 near Glade Spring, Va.	364422	0814756	15.4	15.06
03474905	Byers Creek along Route 736 at Bramblewood Farm near Old Glade Spring, Va.	364416	0814750	15.4	--
03475000	Middle Fork Holston River at Route 803 near Meadowview, Va.	364247	0814907	206	211.00
03475500	Cedarville Spring at Cedarville, Va.	364506	0815124	.78	--
03475595	East Fork Cedar Creek above wastewater outfall at Cedarville, Va.	364458	0815125	.80	--
03475600	Cedar Creek at Route 11 near Meadowview, Va.	364450	0815119	3.42	3.38
03475602	Cedar Creek at Route 706 near Cedarville, Va.	364253	0814950	7.19	7.15
03475605	Greenway Creek at Route 694 near Abingdon, Va.	364451	0815312	1.76	--
03475610	Middle Fork Holston River at Route 58 near Osceola, Va.	364134	0815337	236	238.00
03475615	Bowman Branch near Watauga, Va.	363828	0815526	.77	--
03475630	Wolf Creek at Route 670 above wastewater outfall at Vance Mill near Abingdon, Va.	364111	0815855	15.2	--
03475700	Spring Creek at Route 11 near Abingdon, Va.	364043	0820228	2.78	2.99
034765085	Sinking Creek near Hilander Park, Va.	363944	0820355	.96	--
03477500	Beaver Creek below Beaver Creek Lake near Wallace, Va.	363825	0820641	13.7	13.70
03478400	Beaver Creek at Route 1405 at Bristol, Va.	363754	0820801	26.9	27.70
03487800	Lick Creek above Route 42 near Chatham Hill, Va.	365744	0812820	25.8	25.50
03487850	Possum Jaw Creek at Route 42 near Chatham Hill, Va.	365741	0812751	4.31	4.36
03487900	Sprouts Creek at Route 42 near Chatham Hill, Va.	365810	0813031	7.60	7.64
03488000	North Fork Holston River along Route 91 near Saltville, Va.	365348	0814446	221	222.00
03488100	North Fork Holston River at Route 611 near Plasterco, Va.	365152	0815016	259	259.00
03488445	Brumley Creek near Hansonville, Va.	365121	0820242	4.14	4.29
03488450	Brumley Creek at Route 611 at Brumley Gap, Va.	364730	0820109	21.4	21.10
03488490	Canoe Branch at Greendale Elementary School at Holston, Va.	364512	0820241	.057	--
03488500	North Fork Holston River at Route 19 at Holston, Va.	364629	0820421	401	402.00
03489500	North Fork Holston River at Route 615 at Mendota, Va.	364205	0821826	493	493.00
03489700	Fleenor Branch at Route 58 near Bristol, Va.	363810	0821519	.60	.59
03489800	Cove Creek at Route 58 near Shelleys, Va.	363913	0822116	17.2	17.30
03489850	Cove Creek at Route 803 near Hilton, Va.	363908	0822153	18.1	17.60
03489855	Blue Springs Branch tributary above wastewater outfall at Maces Spring, Va.	364019	0822444	.28	--
03489860	Hilton Creek at Hilton, Va.	363914	0822753	1.34	--

Table 2. Drainage areas of streams tributary to the North Atlantic Slope, South Atlantic Slope, and Ohio River Basins in and around Virginia. — Continued[dd, degrees; mm, minutes; ss, seconds; mi², square miles; --, not determined; *, previous site location]

Station identification number	Stream name and location	Latitude (ddmmss)	Longitude (ddmmss)	Drainage area	
				Current (mi ²)	Previous (mi ²)
03489865	North Fork Holston River tributary 8 to tributary near Hilton, Va.	363847	0822906	1.03	--
03489867	North Fork Holston River tributary 8 at Brickyard Gap near Hilton, Va.	363824	0822933	3.32	2.95
03489870	Big Moccasin Creek at Route 612 at Collinwood near Hansonville, Va.	364416	0821925	42.1	41.90
03489900	Big Moccasin Creek at Route 71 near Gate City, Va.	363847	0823312	79.6	79.60
03489950	Little Moccasin Creek tributary 1 near Kermit, Va.	363813	0824000	.20	--
03490000	North Fork Holston River at Route 23 near Gate City, Va.	363631	0823405	671	672.00
03490020	Cate Branch above Route 713 near Yuma, Va.	363658	0823747	.35	--
03520375	Clinch River at Route 16 (Alternate) at Tazewell, Va.	370744	0813259	35.9	--
03520700	Indian Creek at Route 612 at Harman, Va.	370927	0814229	11.1	11.10
03520800	Greasy Creek at Route 612 at Harman, Va.	370923	0814229	4.73	4.72
03520967	Indian Creek along railroad near Cedar Bluff, Va.	370547	0814426	32.0	--
03520968	Indian Creek above Route 631 near Cedar Bluff, Va.	370542	0814427	32.0	--
03520980	Indian Creek tributary along Route 631 near Cedar Bluff, Va.	370535	0814412	.88	--
03520981	Indian Creek tributary above mouth near Cedar Bluff, Va.	370532	0814418	.91	--
03520985	Indian Creek at Route 1206 at Cedar Bluff, Va.	370528	0814437	33.1	--
03521000	Clinch River at Route 631 at Cedar Bluff, Va.	370520	0814559	124	125.00
03521100	Middle Creek at Route 460 (Business) at Cedar Bluff, Va.	370519	0814604	11.3	11.20
03521500	Clinch River along Route 707 at Richlands, Va.	370510	0814651	137	137.00
03521550	Big Creek at wastewater outfall at Coaldan, Va.	370914	0814701	3.90	--
03521600	Big Creek at Allegheny Street at Richlands, Va.	370549	0814802	15.0	15.00
03521650	Town Hill Creek at Hillcreek Road at Doran, Va.	370544	0814926	5.67	5.91
03521700	Mudlick Creek above Route 460 at Doran, Va.	370533	0815003	7.38	7.35
03521800	Mill Creek at Route 722 (old 629) at Raven, Va.	370458	0815127	5.50	5.60
03521850	Swords Creek at Route 622 at Dye, Va.	370329	0815543	11.9	11.90
03521900	Hess Creek at Route 622 at Dye, Va.	370329	0815545	9.61	9.79
03521950	Maiden Spring Creek at Route 16 near Thompson Valley, Va.	370327	0813138	17.4	17.80
03522000	Little River at Route 19 at Wardell, Va.	370216	0814751	102	103.00
03522525	Grassy Creek at Route 624 near Drill, Va.	370359	0815947	1.79	1.74
03522550	Flatrock Creek at Route 624 near Drill, Va.	370314	0815858	1.91	1.94
03522595	Lewis Creek above wastewater outfall at Honaker, Va.	370028	0815808	21.1	--
03522600	Lewis Creek at Route 653 at Honaker, Va.	370022	0815819	21.2	20.60
03523000	Big Cedar (Cedar) Creek above Route 19 near Lebanon, Va.	365429	0820219	51.6	51.50
03523500	Thompson Creek at Route 646 near Coulwood, Va.	365921	0820343	14.1	14.00
03523650	Thompson Creek at footbridge at Artrip, Va.	365801	0820641	19.4	19.50
03523700	Weaver Creek at Route 663 at Artrip, Va.	365733	0820747	18.0	18.10

Table 2. Drainage areas of streams tributary to the North Atlantic Slope, South Atlantic Slope, and Ohio River Basins in and around Virginia. — Continued

[dd, degrees; mm, minutes; ss, seconds; mi², square miles; --, not determined; *, previous site location]

Station identification number	Stream name and location	Latitude (ddmmss)	Longitude (ddmmss)	Drainage area	
				Current (mi ²)	Previous (mi ²)
03524000	Clinch River above Route 82 at Cleveland, Va.	365641	0820917	533	528.00
03524010	Dumps Creek at Route 600 near South Clinchfield, Va.	365816	0821134	7.04	6.99
03524018	Hurricane Creek at wastewater outfall near South Clinchfield, Va.	365906	0821057	10.3	--
03524020	Hurricane Fork at Route 600 near South Clinchfield, Va.	365819	0821124	11.3	11.30
03524025	Dumps Creek at wastewater outfall near South Clinchfield, Va.	365723	0821045	21.1	--
03524030	Chaney Creek at Route 615 near South Clinchfield, Va.	365708	0821244	6.13	6.05
0352403950	Seven Spring Creek tributary near Dickensonville, Va.	365146	0821517	.26	.27
0352404110	Mill Creek tributary near Banners Corner, Va.	365106	0821702	.17	.19
0352404348	Laurel Branch above mouth at Dante, Va.	365857	0821825	1.20	--
0352404398	Left Fork at Route 627 at Dante, Va.	365846	0821752	4.20	--
0352404460	Straight Hollow Branch at Route 608 at Dante, Va.	365844	0821752	1.60	--
0352404540	Cigarette Hollow Branch at Route 63 at Dante, Va.	365836	0821658	.52	--
0352404550	Right Fork at mouth above Left Fork at Dante, Va.	365838	0821752	2.20	--
0352404560	Lick Creek at Route 608 at Dante, Va.	365828	0821754	8.61	--
03524047	Gravel Lick Creek at wastewater outfall near Hamlin, Va.	365608	0821542	2.04	--
03524048	Lick Creek at Hamlin, Va.	365533	0821708	20.1	--
03524050	Lick Creek at Route 628 at St. Paul, Va.	365428	0821759	27.2	28.50
03524055	Clinch River at Route 58 (Alternate) at St. Paul, Va.	365408	0821829	629	631
03524060	Russell Creek at railroad near St. Paul, Va.	365417	0822048	8.09	8.02
03524070	Bull Run at Route 657 near St. Paul, Va.	365329	0822237	10.0	9.98
03524300	Guest River at Route 625 near Stephens, Va.	365835	0823716	13.5	--
0352430750	Sepulcher Creek at mouth near Stephens, Va.	365858	0823652	1.70	--
03524308	Rocky Fork at Route 625 near Stephens, Va.	365849	0823651	8.12	--
03524340	Guest River at Route 58 (Alternate) at Norton, Va.	365613	0823611	29.3	29.20
03524342	Clear Creek along National Forest Road near Norton, Va.	365524	0823531	2.78	--
03524346	Bear Creek above Yellow Creek near Wise, Va.	365720	0823444	7.43	7.45
03524348	Yellow Creek along Route 681 near Wise, Va.	365728	0823450	4.93	4.95
03524415	Guest River at Route 706 at Tacoma, Va.	365603	0823157	58.3	--
03524445	Toms Creek above Little Toms Creek at Coeburn, Va.	365633	0822809	10.6	--
03524449	Little Toms Creek at mouth at Coeburn, Va.	365632	0822808	5.51	--
03524500	Guest River at Route 72 at Coeburn, Va.	365545	0822723	87.2	87.30
03524520	Crab Orchard Branch near Coeburn, Va.	365452	0822606	2.65	--
03524550	Guest River near Miller Yard, Va.	365243	0822422	100	100.00
0352455450	Sinking Creek near Mew, Va.	365012	0822314	4.51	--
03524560	Davy Land Branch at Forest Road 700 near Dungannon, Va.	365207	0823053	1.02	1.02

Table 2. Drainage areas of streams tributary to the North Atlantic Slope, South Atlantic Slope, and Ohio River Basins in and around Virginia. — Continued[dd, degrees; mm, minutes; ss, seconds; mi², square miles; --, not determined; *, previous site location]

Station identification number	Stream name and location	Latitude (ddmmss)	Longitude (ddmmss)	Drainage area	
				Current (mi ²)	Previous (mi ²)
03524570	Joel Branch at Forest Road 700 near Dungannon, Va.	365202	0823008	0.63	0.63
03524580	Corder Branch at Forest Road 700 near Dungannon, Va.	365310	0822832	1.89	1.89
03524590	Ramey Branch at Route 664 near Coeburn, Va.	365333	0822833	1.06	1.05
03524596	Corder Branch above wastewater outfall near Coeburn, Va.	365304	0822751	3.55	--
03524600	Laurel Branch at Forest Road 701 near Dungannon, Va.	365242	0822800	.96	.96
03524700	Little Stony Creek at railroad near Dungannon, Va.	365048	0822707	16.3	16.20
03524850	Chimney Rock Fork near Route 657 near Ka, Va.	365020	0823542	4.31	4.29
03524860	Coalpit Branch above Route 657 near Ka, Va.	364932	0823649	1.35	1.35
03524870	Stony Creek at Route 619 near Ka, Va.	364908	0823708	18.1	18.20
03524880	Straight Fork above Devil Fork near Ka, Va.	364915	0823745	6.17	6.03
03524890	Devil Fork near Route 619 above mouth near Ka, Va.	364909	0823749	6.03	6.03
03524900	Stony Creek at Route 619 at Ka, Va.	364857	0823702	30.8	30.90
03525000	Stony Creek above Route 66 at Fort Blackmore, Va.	364630	0823450	41.5	41.40
03525050	Cove Creek along Route 722 near Stanleytown, Va.	364742	0824149	4.57	4.56
03525060	Stinking Creek at Route 722 near Stanleytown, Va.	364737	0824143	1.04	1.05
03525070	Dry Creek near Route 602 near Stanleytown, Va.	364657	0824223	.97	.97
03525100	Cove Creek at Route 65 near Stanleytown, Va.	364500	0823725	24.3	23.50
03525150	Stock Creek off Forest Road 239 near Mabe, Va.	364728	0824458	2.46	2.45
03525170	Shupe Branch at Forest Road 239 near Mabe, Va.	364715	0824426	1.42	1.43
03525190	Laurel Fork at Route 653 at Mabe, Va.	364537	0824405	3.59	3.61
03525210	Dry Fork at Route 653 near Mabe, Va.	364509	0824439	1.90	1.89
03525300	Stock Creek at Route 650 near Natural Tunnel, Va.	364306	0824501	17.4	--
03525490	Stock Creek at Route 65 at Clinchport, Va.	364032	0824444	29.0	31.20
03525500	Clinch River at Clinchport, Va.	364025	0824450	987	986.00
--	Copper Creek tributary 3 above Route 58 (Alternate) near Dickensonville, Va.	364953	0821235	.86	--
03525800	Copper Creek tributary 1 at Route 58 (Alternate) near Dickensonville, Va.	364950	0821239	.68	.99
03525935	Culbertson Branch at Twin Springs near Dungannon, Va.	364641	0822747	1.57	1.59
03526000	Copper Creek at Route 619 near Gate City, Va.	364026	0823357	106	106.00
03527000	Clinch River below Route 58 at Speers Ferry, Va.	363855	0824502	1123	1126.00
03527480	North Fork Clinch River at Route 23 near Duffield, Va.	364402	0824751	16.1	16.10
03527490	Dry Branch at Route 23 near Duffield, Va.	364354	0824749	4.29	4.24
03527500	North Fork Clinch River at Route 58 at Duffield, Va.	364240	0824745	23.1	23.10
03527505	North Fork Clinch River tributary 7 at wastewater outfall at Duffield, Va.	364240	0824715	2.20	--
03527510	North Fork Clinch River above wastewater outfall at Pattons ville, Va.	364115	0825036	33.0	--
03529290	Black Creek near Norton, Va.	365607	0824117	3.32	--

Table 2. Drainage areas of streams tributary to the North Atlantic Slope, South Atlantic Slope, and Ohio River Basins in and around Virginia. — Continued[dd, degrees; mm, minutes; ss, seconds; mi², square miles; --, not determined; *, previous site location]

Station identification number	Stream name and location	Latitude (ddmmss)	Longitude (ddmmss)	Drainage area	
				Current (mi ²)	Previous (mi ²)
03529300	Powell River along Route 23 (Alternate) near Norton, Va.	365509	0824217	25.3	27.50
03529310	Roaring Fork above Route 603 at Dunbar, Va.	365822	0824405	8.70	8.70
03529315	Potcamp Fork at Route 603 at Dunbar, Va.	365808	0824422	7.17	7.21
03529335	Mill Branch near Appalachia, Va.	365529	0824444	2.77	2.70
03529400	Callahan Creek at Route 78 near Stonega, Va.	365634	0824750	9.43	9.59
03529410	Mud Lick Creek along Route 685 near Stonega, Va.	365627	0824759	10.6	10.70
03529420	Callahan Creek at wastewater outfall at Andover, Va.	365503	0824729	27.7	--
03529430	Lick Branch at mouth near Imboden, Va.	365255	0825000	1.65	--
03529450	Looney Creek at Route 68 at Appalachia, Va.	365350	0824730	6.26	5.97
03529475	Roaring Branch at Route 23 near Big Stone Gap, Va.	365301	0824718	1.59	1.58
03529500	Powell River at Route 23 at Big Stone Gap, Va.	365208	0824632	112	112.00
03529800	South Fork Powell River at Route 613 at East Stone Gap, Va.	365205	0824448	27.1	27.20
03529900	Butcher Fork at Route 683 at East Stone Gap, Va.	365224	0824414	8.17	8.15
03530000	South Fork Powell River at Route 23 at Big Stone Gap, Va.	365154	0824616	39.7	40.00
03530400	North Fork Powell River above Straight Creek at Pocket, Va.	364640	0830302	42.9	42.30
03530440	Straight Creek along Route 636 at St. Charles, Va.	364821	0830321	6.80	6.84
03530460	Baileys Trace at Route 636 at St. Charles, Va.	364816	0830326	4.23	4.23
03530465	Straight Creek below Big Branch at St. Charles, Va.	364754	0830328	12.2	--
03530467	Straight Creek above wastewater outfall near St. Charles, Va.	364738	0830344	12.6	--
03530470	Puckett Creek at Route 352 at Maness, Va.	364656	0830328	2.93	2.93
03530485	Bergen Branch at Route 421 near Stone Creek, Va.	364553	0830639	2.70	2.65
03530490	Ely Creek above mouth near Stone Creek, Va.	364609	0830601	2.84	2.79
03530495	Stone Creek at Route 421 at Stone Creek, Va.	364636	0830323	11.1	11.00
03530500	North Fork Powell River at Route 621 at Pennington Gap, Va.	364626	0830159	71.2	71.40
03530550	North Fork Powell River above wastewater outfall at Pennington Gap, Va.	364527	0830038	84.1	--
03531000	Powell River at Route 421 near Pennington Gap, Va.	364404	0825956	290	290.00
03531190	Station Creek above wastewater outfall at Dot, Va.	364234	0825733	3.23	--
03531200	Station Creek above wastewater outfall near Dot, Va.	364158	0830002	7.51	--
03531500	Powell River at Route 70 near Jonesville, Va.	363943	0830542	319	319.00
03531502	Batie Creek at Route 662 near Jonesville, Va.	363959	0830920	2.38	--
03531505	Batie Creek along Route 662 near Jonesville, Va.	363934	0830908	16.0	17.40
03531520	Wallen Creek at Route 616 near Jonesville, Va.	363758	0831019	47.6	47.40
03531530	Hardy Creek at Route 660 near Smiley, Va.	363901	0831450	16.5	17.30
03531535	Dry Creek above mouth near Smiley, Va.	363908	0831448	26.5	23.60
03531620	Martin Creek near Rose Hill, Va.	364003	0832116	7.66	--

Prepared by:

USGS Enterprise Publishing Network
Publishing Service Center (PSC) 5
3916 Sunset Ridge Road
Raleigh, NC 27607

For additional information regarding this publication, contact:

Director
USGS Virginia Water Science Center
1730 East Parham Road
Richmond, VA 23228
phone: 1-804-261-2600
email: dc_va@usgs.gov

Or visit the Virginia Water Science Center website at:

<http://va.water.usgs.gov>

This publication is available online at:

<http://pubs.water.usgs.gov/ofr2006-1308>

