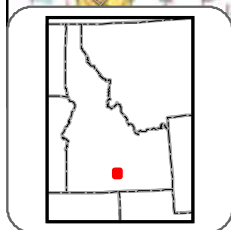
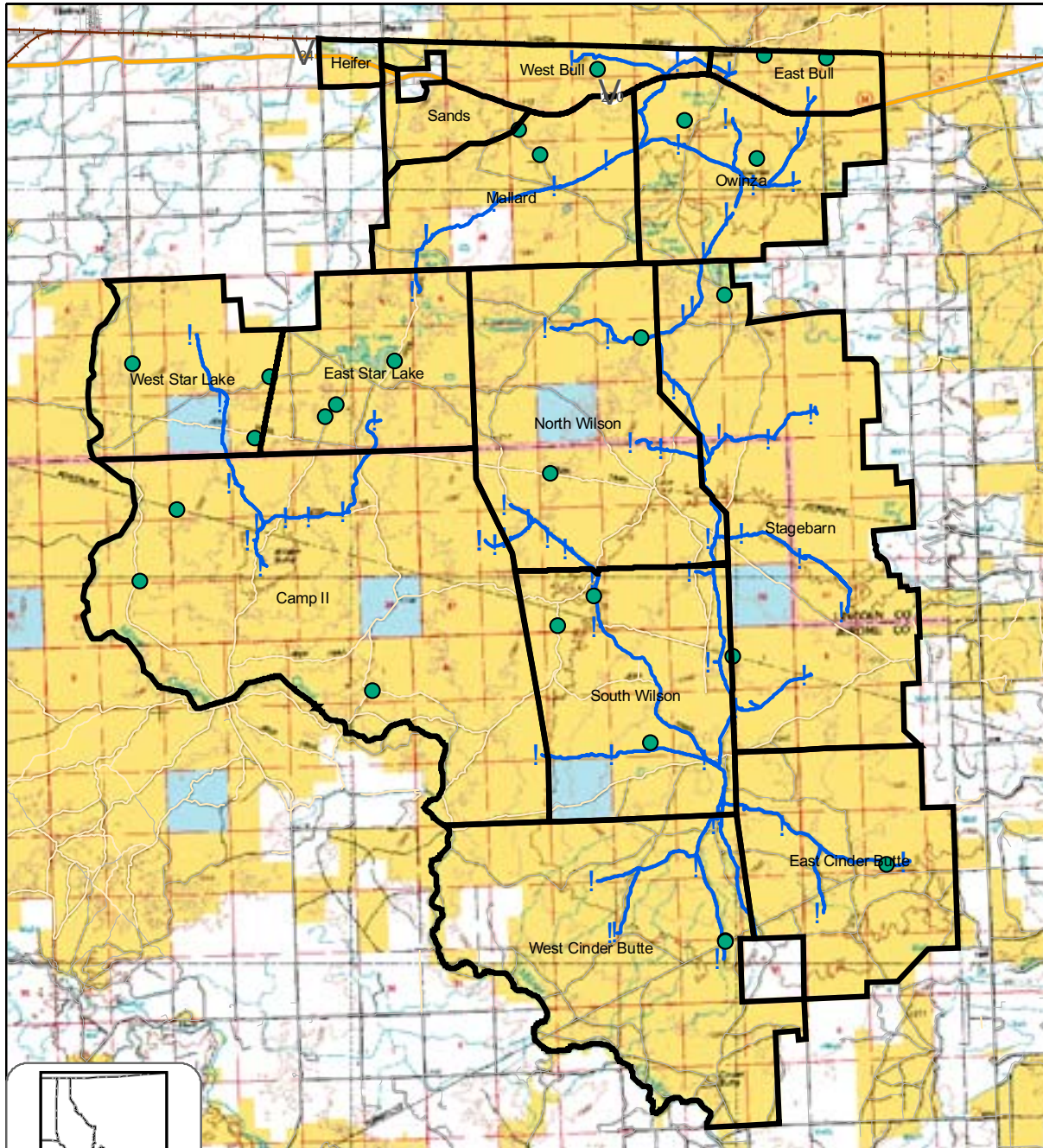


Appendix 1: Maps

Map 1: General Allotment Map

STAR LAKE ALLOTMENT



United States Department of the Interior
Bureau of Land Management
Twin Falls District, Idaho

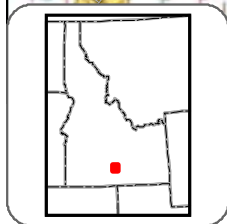
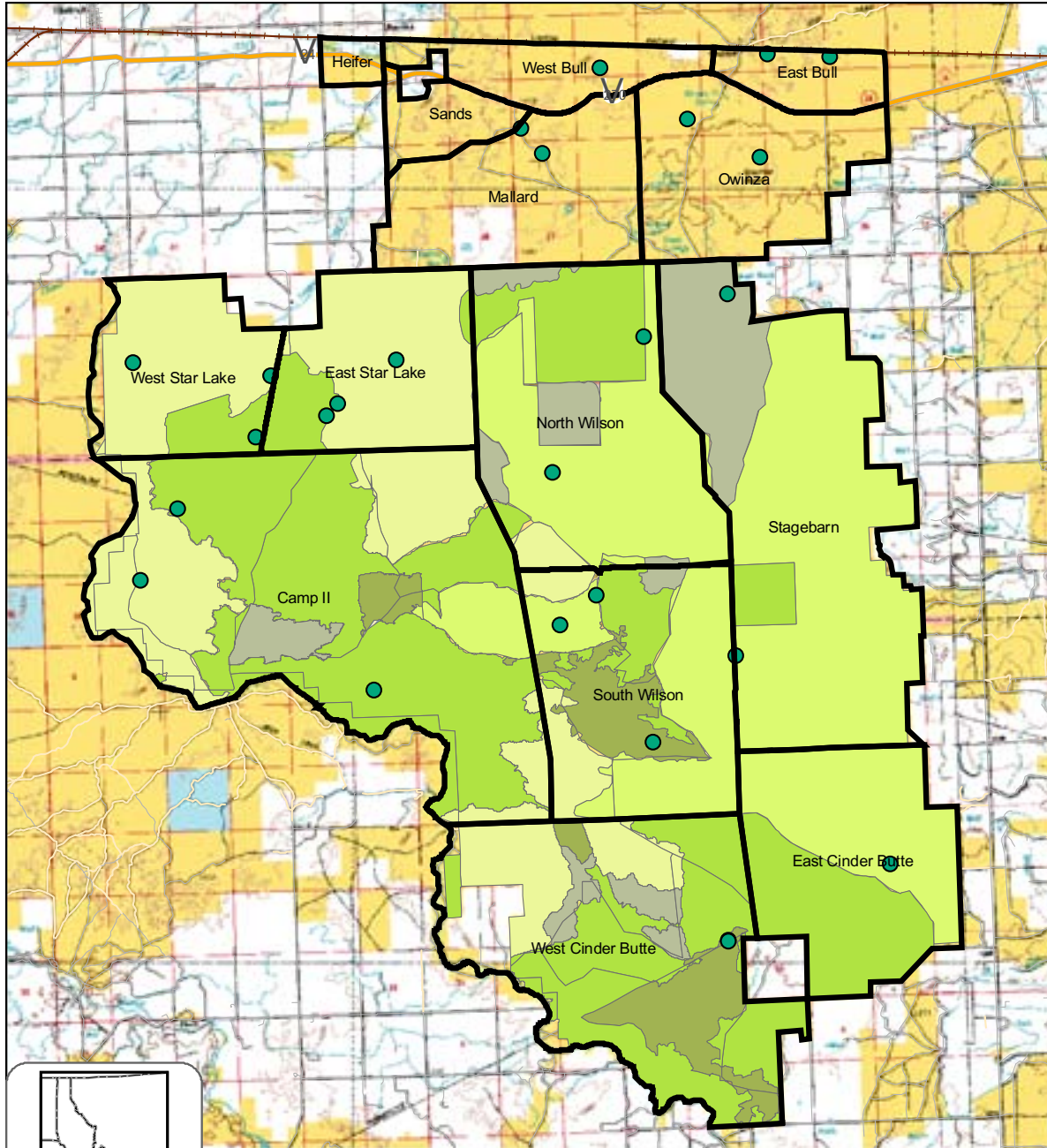
Legend

- | | | | |
|--|--------------------|--|---------------------------|
| | Star Lake Pastures | | Bureau of Land Management |
| | SL Troughs | | Private |
| | SLSGPoints | | State |
| | sl_pipeline | | |
| | Railroads (Local) | | |
| | Major Road | | |
| | Local Road | | |
| | Minor Road | | |
| | Other Road | | |



Tuesday, December 12, 2006 10:38:14 AM
U:\Active S&G\Star Lake\SLSGMap.mxd

STAR LAKE ALLOTMENT VEGETATION SPRING 2005



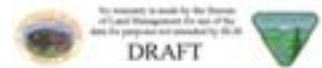
United States Department of the Interior
 Bureau of Land Management
 Twin Falls District, Idaho

Legend

- Star Lake Pastures
- SLSGPoints
- Bureau of Land Management
- Private
- State

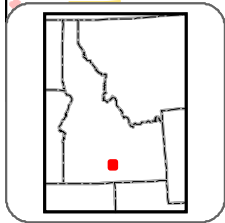
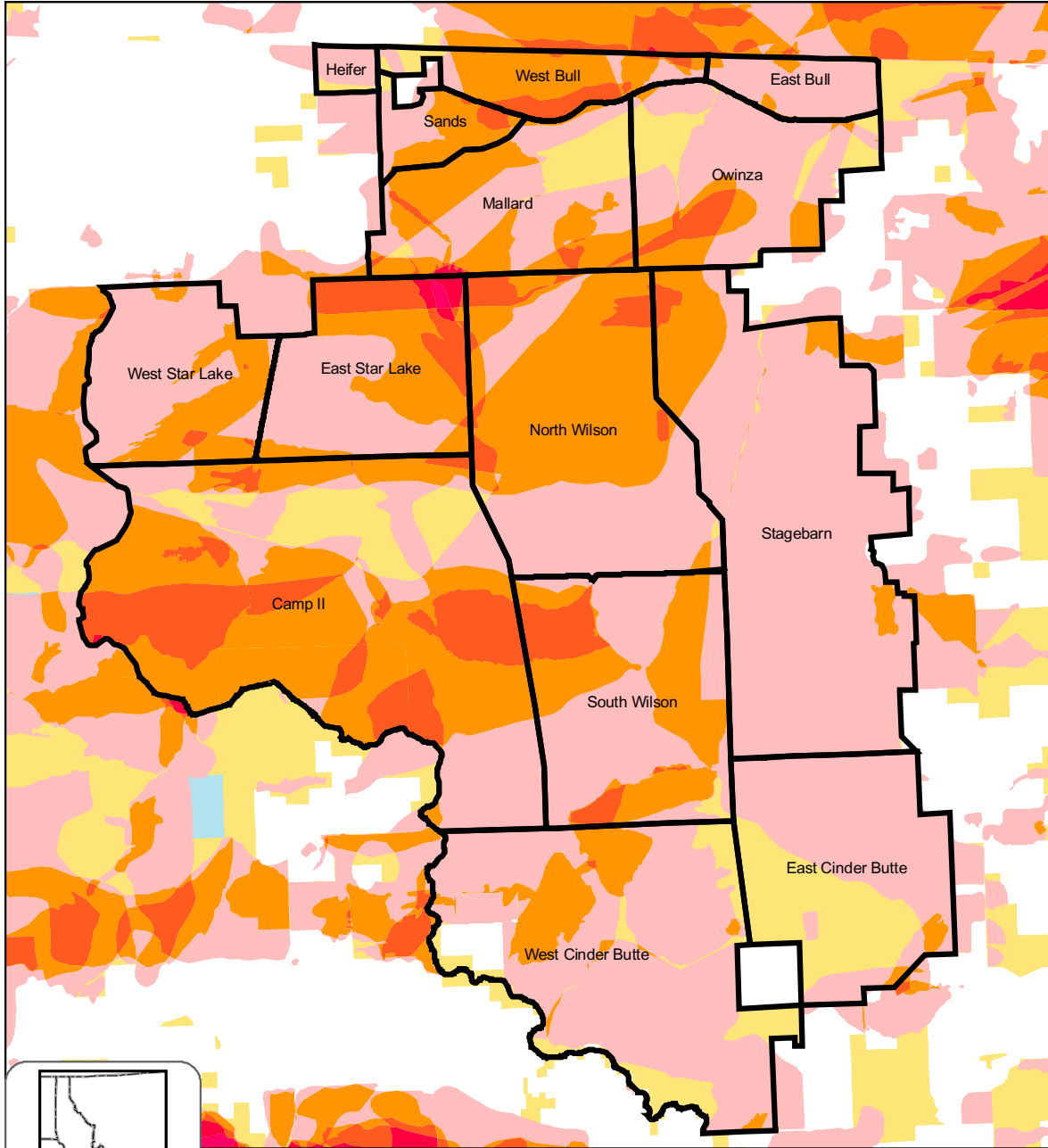
**SLbiopolys
 BIODSCRPT**

- Cheatgrass
- Crested Wheat
- Sage
- Sage/Crested Wheat
- Newer Seed Mix



Tuesday, December 12, 2006 10:38:14 AM
 U:\Active S&G\Star Lake\SLSGMap.mxd

STAR LAKE ALLOTMENT FIRES 1956-2005



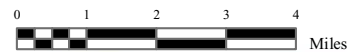
United States Department of the Interior
 Bureau of Land Management
 Twin Falls District, Idaho

Legend

- Star Lake Pastures
- Bureau of Land Management
- Private
- State

**Fire Frequency 1956-2005
 Last 50 Years**

- 1 Time Burned
- 2 Times Burned
- 3 Times Burned
- 4 Times Burned
- 5 Times Burned



Tuesday, December 12, 2006 10:38:14 AM
 U:\Active S&G\Star Lake\SLSGMap.mxd