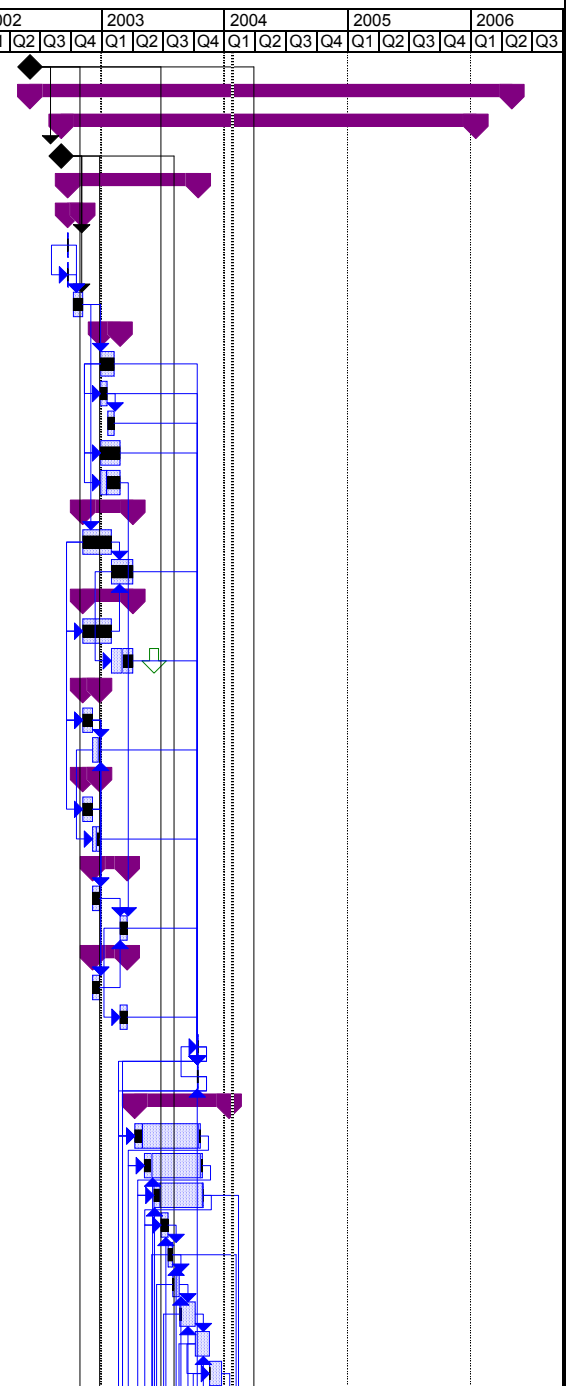
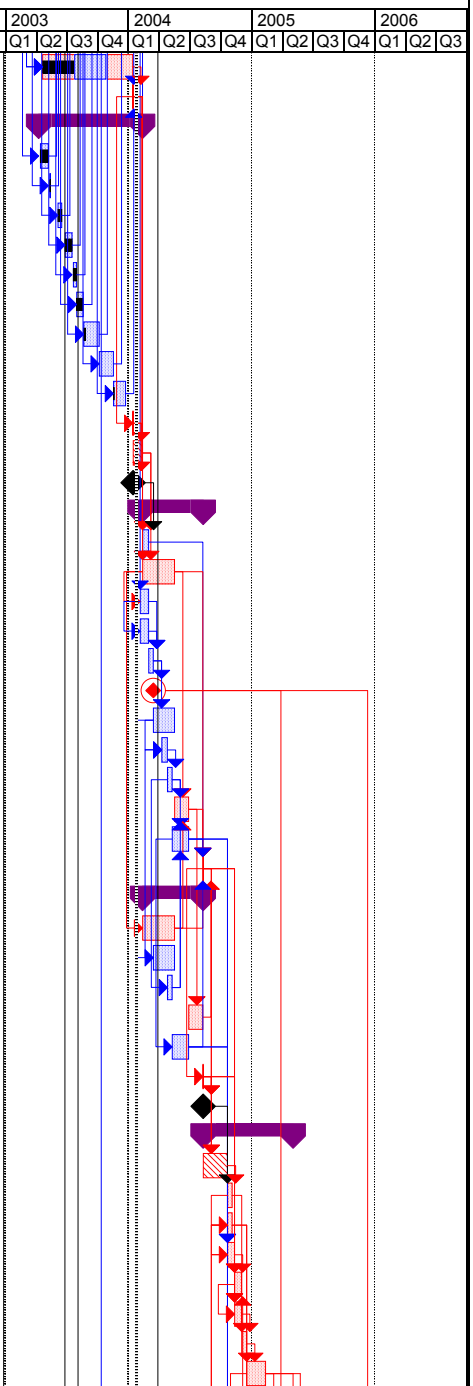


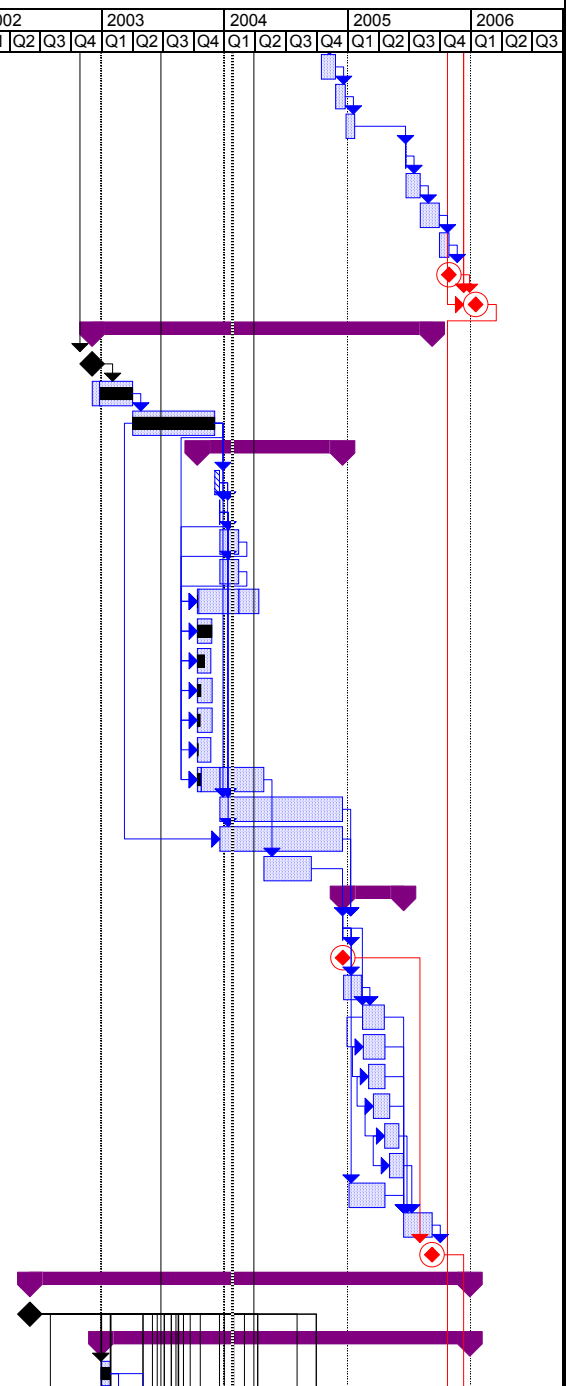
ID	WBS	% Compl	Task Name	Baseline Dur	Start	Finish	Resources	Cost	Cont. \$	M&S Cc	Labor C	2002			2003			2004			2005			2006		
												Q1	Q2	Q3	Q4	Q1	Q2	Q3	Q4	Q1	Q2	Q3	Q4	Q1	Q2	Q3
1	1.31	100%	Start of Run 2b DAQ and Trigger Proj	0 days	Mon 3/4/02	Mon 3/4/02		\$0	0	0	0															
2	1.3	17%	Run 2b DAQ and Trigger Project	971 days	Mon 3/4/02	Tue 1/17/06		\$4,066,079	1204497.45	0	0															
3	1.3.1	34%	Run 2b TDC Project	831 days	Tue 6/4/02	Fri 9/23/05		\$1,200,318	447723.4	0	0															
4	1.3.1.1	100%	Start Run 2b TDC Subproject	0 days	Tue 6/4/02	Tue 6/4/02		\$0	0	0	0															
5	1.3.1.2	100%	Specification & Development	135 days	Mon 6/24/02	Wed 1/8/03		\$50,840	0	0	0															
6	1.3.1.2.1	100%	Formal Specification	32 days	Mon 6/24/02	Wed 8/7/02		\$1,120	0	0	0															
7	1.3.1.2.1.1	100%	Block Diagram (Chica	2 days	Mon 6/24/02	Tue 6/25/02	INKIND[560]	\$560	0	0	0															
8	1.3.1.2.1.3	100%	Block Diagram (FNAL	2 days	Mon 6/24/02	Tue 6/25/02	ANDSPASSL[560]	\$560	0	0	0															
9	1.3.1.2.1.2	100%	Physics Justification	4 wks	Thu 7/11/02	Wed 8/7/02	PostDoc	\$0	0	0	0															
10	1.3.1.2.2	100%	Interface Specification	40 days	Mon 9/30/02	Tue 11/26/02		\$17,800	0	0	0															
11	1.3.1.2.2.1	100%	Trigger	6 wks	Mon 9/30/02	Fri 11/8/02	igF[50%],Physicist	\$6,600	0	0	1															
12	1.3.1.2.2.2	100%	ASDQ	3 wks	Mon 9/30/02	Fri 10/18/02	Physicist	\$0	0	0	1															
13	1.3.1.2.2.3	100%	Crate - Hardware	3 wks	Mon 10/21/02	Fri 11/8/02	Physicist	\$0	0	0	1															
14	1.3.1.2.2.4	100%	Data Transmission (F	8 wks	Mon 9/30/02	Tue 11/26/02	NDSPASSL[5,600]	\$5,600	0	0	0															
15	1.3.1.2.2.5	100%	Data Transmission (C	8 wks	Mon 9/30/02	Tue 11/26/02	INKIND[5,600]	\$5,600	0	0	0															
16	1.3.1.2.3	100%	Front End Timing (FNAL	100 days	Thu 8/8/02	Fri 1/3/03		\$8,960	0	0	0															
17	1.3.1.2.3.1	100%	Simulation	12 wks	Thu 8/8/02	Thu 10/31/02	NDSPASSL[3,360]	\$3,360	0	0	0															
18	1.3.1.2.3.2	100%	Test Board	8 wks	Fri 11/1/02	Fri 1/3/03	NDSPASSL[5,600]	\$5,600	0	0	0															
19	1.3.1.2.4	100%	Front End Timing (Chica	100 days	Thu 8/8/02	Fri 1/3/03		\$8,960	0	0	0															
20	1.3.1.2.4.1	100%	Simulation	12 wks	Thu 8/8/02	Thu 10/31/02	INKIND[3,360]	\$3,360	0	0	0															
21	1.3.1.2.4.2	100%	Test Board	8 wks	Fri 11/1/02	Fri 1/3/03	INKIND[5,600]	\$5,600	0	0	0															
22	1.3.1.2.5	100%	Buffer Management (FNAL	35 days	Thu 8/8/02	Thu 9/26/02		\$3,220	0	0	0															
23	1.3.1.2.5.1	100%	Simulation	4 wks	Thu 8/8/02	Thu 9/5/02	NDSPASSL[1,120]	\$1,120	0	0	0															
24	1.3.1.2.5.2	100%	Trial Implementation	3 wks	Fri 9/6/02	Thu 9/26/02	0],PostDoc[150%]	\$2,100	0	0	0															
25	1.3.1.2.6	100%	Buffer Management (Chica	35 days	Thu 8/8/02	Thu 9/26/02		\$3,220	0	0	0															
26	1.3.1.2.6.1	100%	Simulation	4 wks	Thu 8/8/02	Thu 9/5/02	INKIND[1,120]	\$1,120	0	0	0															
27	1.3.1.2.6.2	100%	Trial Implementation	3 wks	Fri 9/6/02	Thu 9/26/02	INKIND[2,100]	\$2,100	0	0	0															
28	1.3.1.2.7	100%	VME Interface (FNAL)	71 days	Fri 9/6/02	Tue 12/17/02		\$2,940	0	0	0															
29	1.3.1.2.7.2	100%	Simulation	3 wks	Fri 9/6/02	Thu 9/26/02	INKIND[840]	\$840	0	0	0															
30	1.3.1.2.7.1	100%	Trial Implementation	3 wks	Wed 11/27/02	Tue 12/17/02	NDSPASSL[2,100]	\$2,100	0	0	0															
31	1.3.1.2.8	100%	VME Interface (Chicago)	71 days	Fri 9/6/02	Tue 12/17/02		\$2,940	0	0	0															
32	1.3.1.2.8.1	100%	Simulation	3 wks	Fri 9/6/02	Thu 9/26/02	INKIND[840]	\$840	0	0	0															
33	1.3.1.2.8.2	100%	Trial Implementation	3 wks	Wed 11/27/02	Tue 12/17/02	INKIND[2,100]	\$2,100	0	0	0															
34	1.3.1.2.9	100%	Design Review (FNAL)	3 days	Mon 1/6/03	Wed 1/8/03	ANDSPASSL[840]	\$840	0	0	0															
35	1.3.1.2.10	100%	Design Review (Chicago)	3 days	Mon 1/6/03	Wed 1/8/03	ANDSPASSL[840]	\$840	0	0	0															
36	1.3.1.3	68%	Detailed Design (FNAL)	181 days	Thu 1/9/03	Wed 9/24/03		\$76,780	57180	0	0															
37	1.3.1.3.1	100%	Front End	4 wks	Thu 1/9/03	Thu 2/6/03	NDSPASSL[5,600]	\$5,600	0	0	0															
38	1.3.1.3.2	100%	Trigger Interface	4 wks	Fri 2/7/03	Thu 3/6/03	NDSPASSL[5,600]	\$5,600	0	0	0															
39	1.3.1.3.3	100%	Compression	3 wks	Fri 3/7/03	Thu 3/27/03	NDSPASSL[4,200]	\$4,200	0	0	0															
40	1.3.1.3.4	100%	Buffers	3 wks	Fri 3/28/03	Thu 4/17/03	NDSPASSL[4,200]	\$4,200	0	0	0															
41	1.3.1.3.5	90%	VME	2 wks	Fri 4/18/03	Thu 5/1/03	NDSPASSL[2,800]	\$2,800	2800	1	1															
42	1.3.1.3.6	10%	Test Paths	3 wks	Fri 5/2/03	Thu 5/22/03	NDSPASSL[2,800]	\$2,800	2800	1	1															
43	1.3.1.3.7	5%	Board Layout	6 wks	Fri 5/23/03	Mon 7/7/03	NDSPASSL[8,400]	\$8,400	8400	1	1															
44	1.3.1.3.8	0%	Board Simulation	6 wks	Tue 7/8/03	Mon 8/18/03	NDSPASSL[8,400]	\$8,400	8400	1	1															
45	1.3.1.3.9	10%	Documentation	5 wks	Tue 8/19/03	Tue 9/23/03	NDSPASSL[7,000]	\$7,000	7000	1	1															



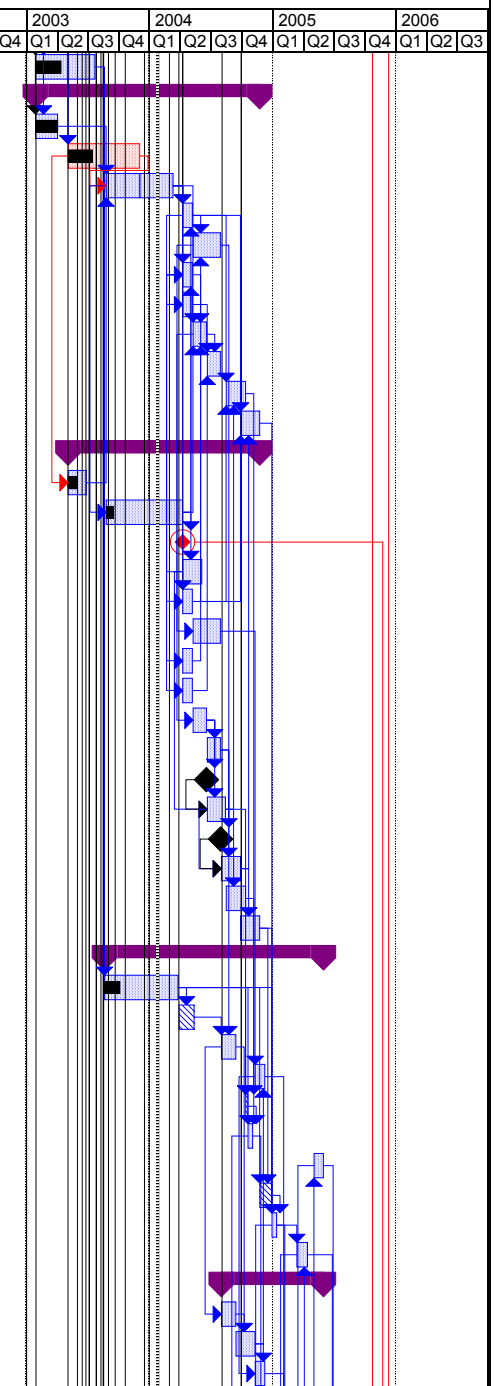
ID	WBS	% Compl	Task Name	Baseline Dur	Start	Finish	Resources	Cost	Cont. \$	M&S Cc	Labor C	2002				2003				2004				2005				2006			
												Q1	Q2	Q3	Q4	Q1	Q2	Q3	Q4	Q1	Q2	Q3	Q4	Q1	Q2	Q3	Q4	Q1	Q2	Q3	Q4
46	1.3.1.3.10	37%	Firmware development	25 wks	Tue 1/21/03	Wed 7/16/03	ElecEngF[50%]	\$27,500	27500	1	1																				
47	1.3.1.3.11	0%	Design Review	1 day	Wed 9/24/03	Wed 9/24/03	ANDSPASSL[280]	\$280	280	1	1																				
48	1.3.1.4	40%	Detailed Design (Chicago)	201 days	Thu 1/9/03	Wed 10/22/03		\$49,280	0	0	0																				
49	1.3.1.4.1	100%	Front End	4 wks	Thu 1/9/03	Thu 2/6/03	INKIND[5,600]	\$5,600	0	0	0																				
50	1.3.1.4.2	100%	Trigger Interface	0.73 wks	Fri 2/7/03	Wed 2/12/03	INKIND[5,600]	\$5,600	0	0	0																				
51	1.3.1.4.3	100%	Compression	1.48 wks	Fri 3/7/03	Tue 3/18/03	INKIND[4,200]	\$4,200	0	0	0																				
52	1.3.1.4.4	100%	Buffers	3 wks	Fri 3/28/03	Thu 4/17/03	INKIND[4,200]	\$4,200	0	0	0																				
53	1.3.1.4.5	88%	VME	2 wks	Fri 4/18/03	Thu 5/1/03	INKIND[2,800]	\$2,800	0	1	1																				
54	1.3.1.4.6	80%	Test Paths	3 wks	Fri 5/2/03	Thu 5/22/03	INKIND[2,800]	\$2,800	0	1	1																				
55	1.3.1.4.7	5%	Board Layout	6 wks	Fri 5/23/03	Mon 7/7/03	INKIND[8,400]	\$8,400	0	1	1																				
56	1.3.1.4.8	0%	Board Simulation	6 wks	Tue 7/8/03	Mon 8/18/03	INKIND[8,400]	\$8,400	0	1	1																				
57	1.3.1.4.9	10%	Documentation	5 wks	Tue 8/19/03	Tue 9/23/03	INKIND[7,000]	\$7,000	0	1	1																				
58	1.3.1.4.10	0%	Design Review	1 day	Wed 9/24/03	Wed 9/24/03	INKIND[280]	\$280	0	1	1																				
59	1.3.1.4.11	0%	TDC Prototype fabricatic	20 days	Thu 9/25/03	Wed 10/22/03		\$0	0	0	0																				
60	1.3.1.5	0%	TDC Design Review	0 days	Wed 9/24/03	Wed 9/24/03		\$0	0	0	0																				
61	1.3.1.6	0%	Prototype - V1.0 (FNAL)	126 days	Thu 10/16/03	Mon 4/19/04		\$126,465	90523.5	0	0																				
62	1.3.1.6.1	0%	ASDQ test stand	2 wks	Thu 10/23/03	Wed 11/5/03	MANDS[35,000]	\$35,000	17500	0.5	0																				
63	1.3.1.6.2	0%	Develop Test Protocols	12 wks	Thu 10/23/03	Fri 1/23/04	DSPASSL[16,800]	\$16,800	16800	1	1																				
64	1.3.1.6.3	0%	Board Fabrication	3 wks	Thu 10/16/03	Wed 11/5/03	NDSPASS[5,055]	\$5,055	1516.5	0.3	0																				
65	1.3.1.6.4	0%	Parts Procurement	3 wks	Thu 10/16/03	Wed 11/5/03	NDSPASS[19,540]	\$19,540	5862	0.3	0																				
66	1.3.1.6.5	0%	First Board Assembly	2 wks	Thu 11/6/03	Wed 11/19/03	MANDSPASS[350]	\$350	105	0.3	0																				
67	1.3.1.6.6	0%	First Prototype TDC avai	0 days	Wed 11/19/03	Wed 11/19/03		\$0	0	0	0																				
68	1.3.1.6.7	0%	Bench Tests	8 wks	Thu 11/20/03	Fri 1/23/04	DSPASSL[23,648]	\$23,648	23648	1	1																				
69	1.3.1.6.8	0%	Multiple Board Assy	2 wks	Mon 12/15/03	Tue 12/30/03	NDSPASS[1,400]	\$1,400	420	0.3	0																				
70	1.3.1.6.9	0%	Bench Tests (multi boards	2 wks	Fri 1/2/04	Thu 1/15/04	NDSPASSL[5,912]	\$5,912	5912	1	1																				
71	1.3.1.6.10	0%	B0 Tests	6 wks	Mon 1/26/04	Fri 3/5/04	NDSPASSL[8,400]	\$8,400	8400	1	1																				
72	1.3.1.6.11	0%	Documentation	7 wks	Fri 1/16/04	Fri 3/5/04	NDSPASSL[9,800]	\$9,800	9800	1	1																				
73	1.3.1.6.12	0%	Design Review	1 day	Mon 4/19/04	Mon 4/19/04	ANDSPASSL[560]	\$560	560	1	1																				
74	1.3.1.7	0%	Prototype - V1.0 (Chicago)	121 days	Thu 10/23/03	Mon 4/19/04		\$16,800	0	0	0																				
75	1.3.1.7.1	0%	Develop Test Protocols	12 wks	Thu 10/23/03	Fri 1/23/04	INKIND[16,800]	\$16,800	0	1	1																				
76	1.3.1.7.2	0%	Bench Tests	8 wks	Thu 11/20/03	Fri 1/23/04	INKIND[0]	\$0	0	1	1																				
77	1.3.1.7.3	0%	Bench Tests (multi boards	2 wks	Fri 1/2/04	Thu 1/15/04	INKIND[0]	\$0	0	1	1																				
78	1.3.1.7.4	0%	B0 Tests	6 wks	Mon 3/8/04	Fri 4/16/04	INKIND[0]	\$0	0	1	1																				
79	1.3.1.7.5	0%	Documentation	7 wks	Fri 1/16/04	Fri 3/5/04	INKIND[0]	\$0	0	1	1																				
80	1.3.1.7.6	0%	Design Review	1 day	Mon 4/19/04	Mon 4/19/04	INKIND[0]	\$0	0	1	1																				
81	1.3.1.8	0%	Design Review Milestone	0 days	Mon 4/19/04	Mon 4/19/04		\$0	0	0	0																				
82	1.3.1.9	0%	Preproduction (FNAL)	181 days	Tue 4/20/04	Mon 1/10/05		\$151,441	63501.1	0	0																				
83	1.3.1.9.1	0%	TDC Preproduction Cont	50 days	Tue 4/20/04	Tue 6/29/04		\$0	0	0	0																				
84	1.3.1.9.2	0%	TDC crate power supplies	2 wks	Wed 6/30/04	Wed 7/14/04	MANDS[2,000]	\$2,000	600	0.3	0																				
85	1.3.1.9.3	0%	Production test equipment	2 wks	Wed 6/30/04	Wed 7/14/04	MANDS[40,000]	\$40,000	20000	0.5	0																				
86	1.3.1.9.4	0%	Layout Modification	3 wks	Wed 6/30/04	Wed 7/21/04	NDSPASSL[8,400]	\$8,400	4200	0.5	0.5																				
87	1.3.1.9.5	0%	Board Fabrication	3 wks	Thu 7/22/04	Wed 8/11/04	MANDS[5,297]	\$5,297	1589.1	0.3	0																				
88	1.3.1.9.6	0%	Parts Procurement	3 wks	Thu 7/22/04	Wed 8/11/04	MANDS[50,800]	\$50,800	15240	0.3	0																				
89	1.3.1.9.7	0%	First Board Assembly	2 wks	Thu 8/12/04	Wed 8/25/04	MANDS[150]	\$150	45	0.3	0																				
90	1.3.1.9.8	0%	Bench Tests	8 wks	Thu 8/26/04	Thu 10/21/04	DSPASSL[23,648]	\$23,648	11824	0.5	0.5																				



ID	WBS	% Compl	Task Name	Baseline Dur	Start	Finish	Resources	Cost	Cont. \$	M&S Cc	Labor C	2002				2003				2004				2005				2006		
												Q1	Q2	Q3	Q4	Q1	Q2	Q3	Q4	Q1	Q2	Q3	Q4	Q1	Q2	Q3	Q4	Q1	Q2	Q3
136	1.3.1.14.2.4	0%	Preproduction fabrica	6 wks	Fri 7/16/04	Thu 8/26/04	MANDS[20,000]	\$20,000	6000	0.3	0																			
137	1.3.1.14.2.5	0%	Preproduction checkc	4 wks	Fri 8/27/04	Fri 9/24/04	PostDoc,Physicist	\$0	0	0	0.5																			
138	1.3.1.14.2.6	0%	Layout modification	4 wks	Mon 9/27/04	Fri 10/22/04	ElecEngF	\$8,800	4400	0	0.5																			
139	1.3.1.14.2.7	0%	Data Concentrator Pr	1 day	Wed 3/23/05	Wed 3/23/05		\$0	0	0	0.5																			
140	1.3.1.14.2.8	0%	Production fabricator	6 wks	Thu 3/24/05	Wed 5/4/05	MANDS[125,000]	\$125,000	37500	0.3	0																			
141	1.3.1.14.2.9	0%	Production checkout	8 wks	Thu 5/5/05	Thu 6/30/05	PostDoc,Physicist	\$0	0	0	0.5																			
142	1.3.1.14.2.10	0%	Purchase optical fiber	4 wks	Fri 7/1/05	Fri 7/29/05	%,MANDS[8,626]	\$8,626	2587.8	0.3	0.5																			
143	1.3.1.14.16	0%	TDC Data Concentrator I	0 days	Fri 7/29/05	Fri 7/29/05		\$0	0	0	0																			
144	1.3.1.16	0%	Run 2b TDC Ready for Install	0 days	Fri 9/23/05	Fri 9/23/05		\$0	0	0	0																			
145	1.3.2	20%	Run 2b Level 2 Project	693 days	Wed 9/4/02	Thu 6/9/05		\$307,819	50792.85	0	0																			
146	1.3.2.1	100%	Start of Run 2b Level 2 Proje	0 days	Wed 9/4/02	Wed 9/4/02		\$0	0	0	0																			
147	1.3.2.2	100%	Testing and Software work exis	4 mons	Thu 9/5/02	Thu 1/2/03	%,PostDoc[250%]	\$0	0	0	0.5																			
148	1.3.2.3	100%	Commission L2 Pulsar for eac	8.5 mons	Fri 1/3/03	Wed 9/3/03	%,PostDoc[50%]	\$0	0	0	0.5																			
149	1.3.2.4	9%	Preproduction run of Pulsar I	261 days	Thu 9/4/03	Thu 9/16/04		\$145,515	26447.25	0	0																			
150	1.3.2.4.1	0%	Preproduction Pulsar L2	10 days	Thu 9/4/03	Wed 9/17/03		\$0	0	0	0																			
151	1.3.2.4.2	0%	Preproduction Readiness I	1 day	Thu 9/18/03	Thu 9/18/03		\$0	0	0	0																			
152	1.3.2.4.3	0%	Engineering on preproduct	2 mons	Fri 9/19/03	Thu 11/13/03	DSPASSL[22,400]	\$22,400	4480	0.2	0.2																			
153	1.3.2.4.4	0%	Engineering on preproduct	2 mons	Fri 9/19/03	Thu 11/13/03	INKIND[0]	\$0	0	0.2	0.2																			
154	1.3.2.4.5	10%	Motherboards Fabrica	8 wks	Fri 11/14/03	Fri 1/16/04	MANDS[18,600]	\$18,600	2790	0.15	0																			
155	1.3.2.4.6	100%	Mezzanine boards Fabrica	6 wks	Tue 11/25/03	Tue 1/13/04	MANDS[13,000]	\$13,000	1950	0.15	0																			
156	1.3.2.4.7	50%	S-link Auxiliary boards	6 wks	Tue 11/25/03	Tue 1/13/04	MANDS[900]	\$900	135	0.15	0																			
157	1.3.2.4.8	25%	LSC/LDL + fiber boards	6 wks	Thu 12/4/03	Wed 1/21/04	MANDS[6,828]	\$6,828	1024.2	0.15	0																			
158	1.3.2.4.9	20%	PCI-> S-link boards	6 wks	Thu 12/11/03	Wed 1/28/04	MANDS[2,574]	\$2,574	386.1	0.15	0																			
159	1.3.2.4.10	10%	S-link -> PCI boards	6 wks	Thu 12/11/03	Wed 1/28/04	MANDS[3,213]	\$3,213	481.95	0.15	0																			
160	1.3.2.4.11	10%	L2 decision processor	19 wks	Fri 9/19/03	Mon 2/9/04	MANDS[8,000]	\$8,000	1200	0.15	0																			
161	1.3.2.4.12	0%	software development/mei	50 wks	Fri 9/19/03	Thu 9/16/04	DSPASSL[70,000]	\$70,000	14000	0.2	0.2																			
162	1.3.2.4.13	0%	software development/mei	50 wks	Fri 9/19/03	Thu 9/16/04	INKIND[0]	\$0	0	0.2	0.2																			
163	1.3.2.5	0%	Vertical Slice Test	5 mons	Tue 2/10/04	Tue 6/29/04	%,PostDoc[50%]	\$0	0	0	0.5																			
164	1.3.2.6	0%	Production run of Pulsar L2 s	122 days	Fri 9/17/04	Wed 3/16/05		\$162,304	24345.6	0	0																			
165	1.3.2.6.1	0%	Production Readiness Rev	1 day	Fri 9/17/04	Fri 9/17/04		\$0	0	0	0																			
166	1.3.2.6.3	0%	Begin production of Lev	0 days	Fri 9/17/04	Fri 9/17/04		\$0	0	0	0																			
167	1.3.2.6.4	0%	L2 Pulsar system - sche	40 days	Mon 9/20/04	Fri 11/12/04		\$0	0	0	0																			
168	1.3.2.6.5	0%	Motherboards Fabrica	8 wks	Mon 11/15/04	Tue 1/18/05	MANDS[80,600]	\$80,600	12090	0.15	0																			
169	1.3.2.6.6	0%	Mezzanine boards Fabrica	8 wks	Wed 11/17/04	Thu 1/20/05	MANDS[32,500]	\$32,500	4875	0.15	0																			
170	1.3.2.6.7	0%	S-link Auxiliary boards	6 wks	Fri 12/3/04	Thu 1/20/05	MANDS[3,900]	\$3,900	585	0.15	0																			
171	1.3.2.6.8	0%	LSC/LDL + fiber boards	6 wks	Fri 12/17/04	Thu 2/3/05	MANDS[29,588]	\$29,588	4438.2	0.15	0																			
172	1.3.2.6.9	0%	PCI-> S-link boards	6 wks	Thu 1/20/05	Wed 3/2/05	MANDS[3,432]	\$3,432	514.8	0.15	0																			
173	1.3.2.6.10	0%	S-link -> PCI boards	6 wks	Thu 2/3/05	Wed 3/16/05	MANDS[4,284]	\$4,284	642.6	0.15	0																			
174	1.3.2.6.11	0%	L2 decision processor	14 wks	Wed 10/6/04	Thu 1/20/05	MANDS[8,000]	\$8,000	1200	0.15	0																			
175	1.3.2.7	0%	System Integration standalone	3 mons	Thu 3/17/05	Thu 6/9/05	%,PostDoc[50%]	\$0	0	0	0.5																			
176	1.3.2.9	0%	Pulsar Level 2 subproject rea	0 days	Thu 6/9/05	Thu 6/9/05		\$0	0	0	0																			
177	1.3.3	11%	Run 2b XFII Project	901 days	Mon 3/4/02	Thu 9/29/05		\$1,529,842	397551.2	0	0																			
178	1.3.3.1	100%	Start of XFII Project	0 days	Mon 3/4/02	Mon 3/4/02		\$0	0	0	0																			
179	1.3.3.2	10%	Finder Boards	753 days	Tue 10/1/02	Thu 9/29/05		\$638,480	182737	0	0																			
180	1.3.3.2.8	100%	Prototype Finder boards	20 days	Tue 10/1/02	Mon 10/28/02		\$0	0	0	0																			



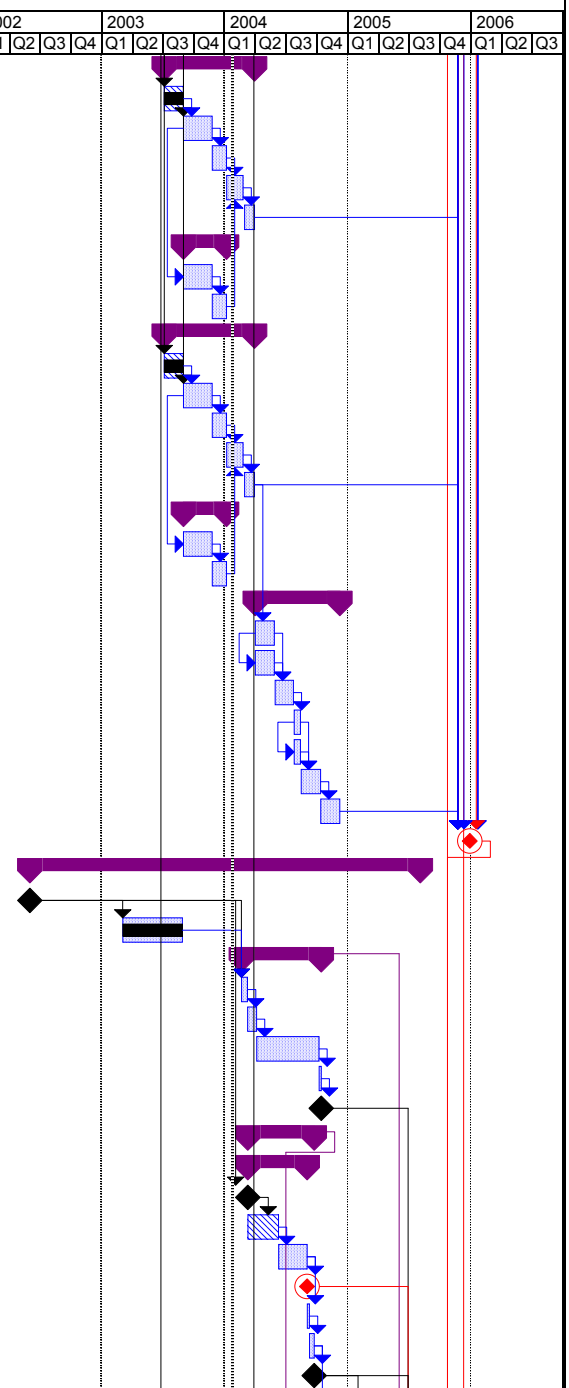
ID	WBS	% Compl	Task Name	Baseline Dur	Start	Finish	Resources	Cost	Cont. \$	M&S Cc	Labor C	2002				2003				2004				2005				2006			
												Q1	Q2	Q3	Q4	Q1	Q2	Q3	Q4	Q1	Q2	Q3	Q4	Q1	Q2	Q3	Q4	Q1	Q2	Q3	Q4
181	1.3.3.2.1	40%	Finder Board FPGA chip F	24 wks	Tue 10/29/02	Wed 4/23/03	Physicist[30%]	\$0	0	0	0.5																				
182	1.3.3.2.2	16%	Prototype Finder boards	457 days	Tue 10/29/02	Tue 8/24/04		\$26,730	0	0	0																				
183	1.3.3.2.2.1	100%	Study existing boards	8.4 wks	Tue 10/29/02	Thu 1/2/03	Physicist[30%]	\$0	0	0.5	0.5																				
184	1.3.3.2.2.2	35%	Prototype Finder 1/3 I	30 wks	Mon 2/3/03	Wed 9/3/03	Physicist[30%]	\$2,640	0	0.5	0.5																				
185	1.3.3.2.2.3	2%	Prototype Finder 1/3	27.72 wks	Tue 5/27/03	Thu 12/11/03	INKIND[11,550]	\$11,550	0	0.5	0.5																				
186	1.3.3.2.2.4	0%	Test Stand Setup	4 wks	Fri 1/9/04	Fri 2/6/04	Physicist[20%]	\$0	0	0.5	0.5																				
187	1.3.3.2.2.5	0%	Finder 1/3 board Pro	12 wks	Mon 2/9/04	Fri 4/30/04	Physicist[200%]	\$0	0	0.5	0.5																				
188	1.3.3.2.2.6	0%	Prototype Finder 2/4 I	4 wks	Fri 1/9/04	Fri 2/6/04	INKIND[1,320]	\$1,320	0	0.5	0.5																				
189	1.3.3.2.2.7	0%	Prototype Finder SL7	4 wks	Fri 1/9/04	Fri 2/6/04	INKIND[1,320]	\$1,320	0	0.5	0.5																				
190	1.3.3.2.2.8	0%	Prototype Finder 2/4 I	6 wks	Mon 2/9/04	Fri 3/19/04	INKIND[4,950]	\$4,950	0	0.5	0.5																				
191	1.3.3.2.2.9	0%	Prototype Finder SL7	6 wks	Mon 3/22/04	Fri 4/30/04	INKIND[4,950]	\$4,950	0	0.5	0.5																				
192	1.3.3.2.2.10	0%	Finder 2/4 board Pro	8 wks	Mon 5/17/04	Tue 7/13/04	Physicist[200%]	\$0	0	0.5	0.5																				
193	1.3.3.2.2.11	0%	Finder SL 7 board Pr	8 wks	Tue 6/29/04	Tue 8/24/04	Physicist[200%]	\$0	0	0.5	0.5																				
194	1.3.3.2.3	6%	Prototype Finder boards	395 days	Mon 2/3/03	Tue 8/24/04		\$106,410	33655	0	0																				
195	1.3.3.2.3.1	50%	Prototype Finder 1/3 I	8 wks	Mon 2/3/03	Fri 3/28/03	NDSPASSL[8,880]	\$8,880	4440	0.5	0.5																				
196	1.3.3.2.3.2	10%	Prototype Finder 1/3	31 wks	Tue 5/27/03	Thu 1/8/04	DSPASSL[10,850]	\$10,850	5425	0.5	0.5																				
197	1.3.3.2.3.4	0%	Fabrication of Proto	0 days	Thu 1/8/04	Thu 1/8/04		\$0	0	0	0																				
198	1.3.3.2.3.5	0%	Fabricate Prototype F	8 wks	Fri 1/9/04	Fri 3/5/04	NDSPASS[12,500]	\$12,500	0	0.3	0																				
199	1.3.3.2.3.6	0%	Test Stand Setup	4 wks	Fri 1/9/04	Fri 2/6/04	ANDSPASSL[400]	\$25,400	12700	0.5	0.5																				
200	1.3.3.2.3.7	0%	Finder 1/3 board Pro	12 wks	Mon 2/9/04	Fri 4/30/04	NDSPASSL[2,400]	\$2,400	1200	0.5	0.5																				
201	1.3.3.2.3.8	0%	Prototype Finder 2/4 I	4 wks	Fri 1/9/04	Fri 2/6/04	NDSPASSL[4,440]	\$4,440	2220	0.5	0.5																				
202	1.3.3.2.3.9	0%	Prototype Finder SL7	4 wks	Fri 1/9/04	Fri 2/6/04	NDSPASSL[4,440]	\$4,440	2220	0.5	0.5																				
203	1.3.3.2.3.10	0%	Prototype Finder 2/4 I	6 wks	Mon 2/9/04	Fri 3/19/04	NDSPASSL[4,650]	\$4,650	2325	0.5	0.5																				
204	1.3.3.2.3.11	0%	Prototype Finder SL7	6 wks	Mon 3/22/04	Fri 4/30/04	NDSPASSL[4,650]	\$4,650	2325	0.5	0.5																				
205	1.3.3.2.3.12	0%	Fabrication of Proto	0 days	Fri 3/19/04	Fri 3/19/04		\$0	0	0	0																				
206	1.3.3.2.3.13	0%	Fabricate Prototype F	8 wks	Mon 3/22/04	Fri 5/14/04	NDSPASS[12,500]	\$12,500	0	0.3	0																				
207	1.3.3.2.3.14	0%	Fabrication of Proto	0 days	Fri 4/30/04	Fri 4/30/04		\$0	0	0	0																				
208	1.3.3.2.3.15	0%	Fabricate Prototype F	8 wks	Mon 5/3/04	Mon 6/28/04	NDSPASS[12,500]	\$12,500	0	0.3	0																				
209	1.3.3.2.3.16	0%	Finder 2/4 board Pro	8 wks	Mon 5/17/04	Tue 7/13/04	NDSPASSL[1,600]	\$1,600	800	0.5	0.5																				
210	1.3.3.2.3.17	0%	Finder SL 7 board Pr	8 wks	Tue 6/29/04	Tue 8/24/04	NDSPASSL[1,600]	\$1,600	0	0.5	0.5																				
211	1.3.3.2.4	9%	Preproduction Finder Bc	444 days	Thu 5/22/03	Tue 3/1/05		\$6,600	0	0	0																				
212	1.3.3.2.4.1	20%	Finder Board FPGA c	30 wks	Thu 5/22/03	Fri 12/26/03	Physicist[10%]	\$0	0	0	0.5																				
213	1.3.3.2.4.10	0%	Preproduction Findk	30 days	Mon 12/29/03	Wed 2/11/04		\$0	0	0	0																				
214	1.3.3.2.4.2	0%	Modification of Finder	6 wks	Mon 5/3/04	Mon 6/14/04	INKIND[4,950]	\$4,950	0	0.5	0.5																				
215	1.3.3.2.4.3	0%	Testing Finder 1/3 pr	4 wks	Wed 8/11/04	Wed 9/8/04	Physicist[200%]	\$0	0	0	0.5																				
216	1.3.3.2.4.8	0%	Preproduction Findk	5 days	Wed 7/14/04	Tue 7/20/04		\$0	0	0	0																				
217	1.3.3.2.4.4	0%	Modification of Finder	2 wks	Wed 7/21/04	Tue 8/3/04	INKIND[1,650]	\$1,650	0	0.5	0.5																				
218	1.3.3.2.4.5	0%	Testing Finder 2/4 pr	4 wks	Wed 2/2/05	Tue 3/1/05	Physicist[200%]	\$0	0	0	0.5																				
219	1.3.3.2.4.9	0%	Preproduction Findk	25 days	Wed 8/25/04	Wed 9/29/04		\$0	0	0	0																				
220	1.3.3.2.4.6	0%	Modification of Finder	2 wks	Thu 9/30/04	Wed 10/13/04		\$0	0	0	0.5																				
221	1.3.3.2.4.7	0%	Testing Finder SL7 pr	4 wks	Mon 12/13/04	Thu 1/13/05	Physicist[200%]	\$0	0	0	0.5																				
222	1.3.3.2.5	0%	Preproduction Finder Bc	207 days	Mon 5/3/04	Tue 3/1/05		\$47,100	16050	0	0																				
223	1.3.3.2.5.1	0%	Modification of Finder	6 wks	Mon 5/3/04	Mon 6/14/04	NDSPASSL[4,650]	\$4,650	2325	0.5	0.5																				
224	1.3.3.2.5.2	0%	Preproduction Finder	8 wks	Tue 6/15/04	Tue 8/10/04	NDSPASS[12,500]	\$12,500	3750	0.3	0																				
225	1.3.3.2.5.3	0%	Testing Finder 1/3 pr	4 wks	Wed 8/11/04	Wed 9/8/04	ANDSPASSL[800]	\$800	400	0.5	0.5																				



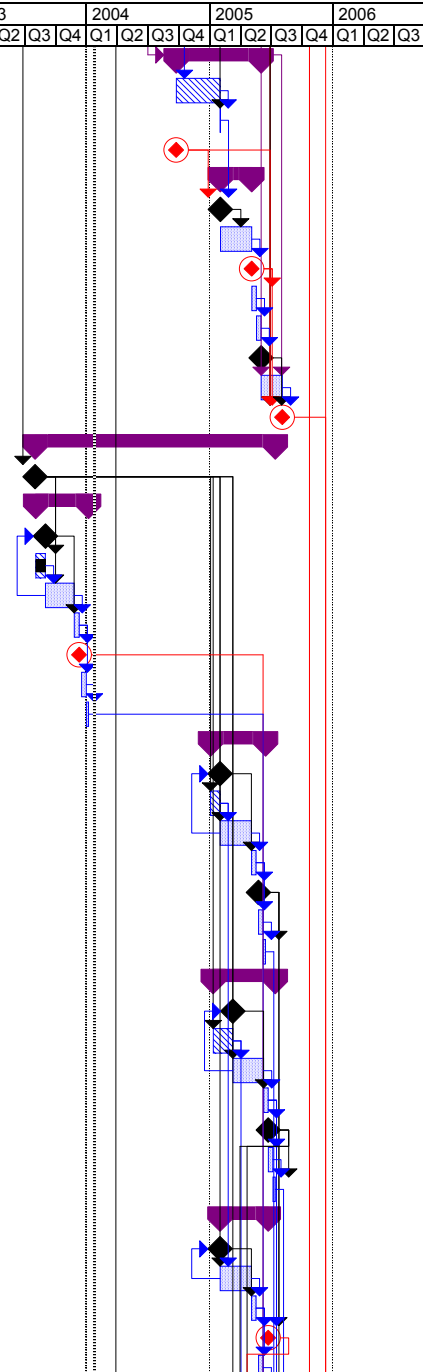
ID	WBS	% Compl	Task Name	Baseline Dur	Start	Finish	Resources	Cost	Cont. \$	M&S Cc	Labor C	2002				2003				2004				2005				2006			
												Q1	Q2	Q3	Q4	Q1	Q2	Q3	Q4	Q1	Q2	Q3	Q4	Q1	Q2	Q3	Q4	Q1	Q2	Q3	Q4
226	1.3.3.2.5.4	0%	Modification of Finder	2 wks	Wed 7/21/04	Tue 8/3/04	NDSPASSL[1,550]	\$1,550	775	0.5	0.5																				
227	1.3.3.2.5.5	0%	Preproduction Finder	8 wks	Wed 8/4/04	Wed 9/29/04	NDSPASS[12,500]	\$12,500	3750	0.3	0																				
228	1.3.3.2.5.6	0%	Testing Finder 2/4 pre	4 wks	Wed 2/2/05	Tue 3/1/05	ANDSPASSL[800]	\$800	400	0.5	0.5																				
229	1.3.3.2.5.7	0%	Modification of Finder	2 wks	Thu 9/30/04	Wed 10/13/04	NDSPASSL[1,000]	\$1,000	500	0.5	0.5																				
230	1.3.3.2.5.8	0%	Preproduction Finder	8 wks	Thu 10/14/04	Fri 12/10/04	NDSPASS[12,500]	\$12,500	3750	0.3	0																				
231	1.3.3.2.5.9	0%	Testing Finder SL7 pr	4 wks	Mon 12/13/04	Thu 1/13/05	ANDSPASSL[800]	\$800	400	0.5	0.5																				
232	1.3.3.2.6	0%	Production Finder board	226 days	Thu 11/4/04	Thu 9/29/05		\$446,640	131832	0	0																				
233	1.3.3.2.6.1	0%	Production Readines	1 day	Thu 11/4/04	Thu 11/4/04		\$0	0	0	0																				
234	1.3.3.2.6.2	0%	Production of Finder	14 wks	Fri 11/5/04	Mon 2/21/05	DSPASS[156,000]	\$156,000	46800	0.3	0																				
235	1.3.3.2.6.3	0%	Test Production Find	12 wks	Tue 2/22/05	Mon 5/16/05	NDSPASSL[2,400]	\$2,400	0	0	0.5																				
236	1.3.3.2.6.4	0%	Production Readines	1 day	Thu 3/31/05	Thu 3/31/05		\$0	0	0	0																				
237	1.3.3.2.6.5	0%	Production of Finder	14 wks	Fri 4/1/05	Mon 7/11/05	DSPASS[174,240]	\$174,240	52272	0.3	0																				
238	1.3.3.2.6.6	0%	Test Production Find	11.4 wks	Tue 7/12/05	Thu 9/29/05	NDSPASSL[2,400]	\$2,400	0	0	0.5																				
239	1.3.3.2.6.7	0%	Production Readines	1 day	Mon 3/28/05	Mon 3/28/05		\$0	0	0	0																				
240	1.3.3.2.6.9	0%	Begin Production XI	0 days	Mon 3/28/05	Mon 3/28/05		\$0	0	0	0																				
241	1.3.3.2.6.10	0%	Production of Finder	14 wks	Tue 3/29/05	Wed 7/6/05	DSPASS[109,200]	\$109,200	32760	0.3	0																				
242	1.3.3.2.6.11	0%	Test Production Find	12 wks	Thu 7/7/05	Thu 9/29/05	NDSPASSL[2,400]	\$2,400	0	0	0.5																				
243	1.3.3.2.7	0%	Finder3D backplane	81 days	Mon 6/23/03	Wed 10/15/03		\$5,000	1200	0	0																				
244	1.3.3.2.7.1	0%	Finder3d backplane L	12 wks	Mon 6/23/03	Tue 9/16/03	NDSPASSL[1,000]	\$1,000	0	0	0.5																				
245	1.3.3.2.7.2	0%	Finder3d Backplane F	1 day	Wed 9/17/03	Wed 9/17/03		\$0	0	0	0																				
246	1.3.3.2.7.3	0%	Finder3d backplane F	4 wks	Thu 9/18/03	Wed 10/15/03	NDSPASS[4,000]	\$4,000	1200	0.3	0																				
247	1.3.3.3	0%	Test equipment	2 wks	Mon 12/1/03	Fri 12/12/03	MANDS[25,000]	\$25,000	0	0.3	0																				
248	1.3.3.4	11%	TDC Transition Module	281 days	Mon 2/3/03	Mon 3/15/04		\$31,400	8700	0	0																				
249	1.3.3.4.4	100%	TDC Transition Module s	15 days	Mon 2/3/03	Fri 2/21/03		\$0	0	0	0																				
250	1.3.3.4.1	0%	TDC Transition Module Pr	1 day	Thu 9/18/03	Thu 9/18/03		\$0	0	0	0																				
251	1.3.3.4.2	0%	TDC Transition Module bo	12 wks	Fri 9/19/03	Mon 12/15/03	NDSPASS[29,000]	\$29,000	8700	0.3	0																				
252	1.3.3.4.3	0%	TDC Transition Module bo	12 wks	Tue 12/16/03	Mon 3/15/04	NDSPASSL[2,400]	\$2,400	0	0	0.5																				
253	1.3.3.5	18%	Finder Transition Module	96 days	Mon 4/28/03	Thu 9/11/03		\$21,600	6000	0	0																				
254	1.3.3.5.4	100%	Finder Transition Modul	15 days	Mon 4/28/03	Fri 5/16/03		\$0	0	0	0																				
255	1.3.3.5.1	5%	Production Readiness Rev	1 day	Mon 5/19/03	Mon 5/19/03		\$0	0	0	0																				
256	1.3.3.5.2	5%	Finder Transition board Fa	8 wks	Tue 5/20/03	Wed 7/16/03	NDSPASS[20,000]	\$20,000	6000	0.3	0																				
257	1.3.3.5.3	0%	Production Finder Transiti	8 wks	Thu 7/17/03	Thu 9/11/03	NDSPASSL[1,600]	\$1,600	0	0	0.5																				
258	1.3.3.6	16%	Finder3D Tester Board	65 days	Mon 4/28/03	Tue 7/29/03		\$13,600	3525	0	0																				
259	1.3.3.6.4	100%	Finder3D tester board sc	15 days	Mon 4/28/03	Fri 5/16/03		\$0	0	0	0																				
260	1.3.3.6.1	0%	Finder3D Tester Board scl	6 wks	Mon 5/19/03	Mon 6/30/03	%,INKIND[4,950]	\$4,950	0	0.5	0.5																				
261	1.3.3.6.2	0%	Finder3D Tester Board scl	6 wks	Mon 5/19/03	Mon 6/30/03	NDSPASSL[4,650]	\$4,650	2325	0.5	0.5																				
262	1.3.3.6.3	0%	Finder3D Tester board fab	4 wks	Tue 7/1/03	Tue 7/29/03	NDSPASS[4,000]	\$4,000	1200	0.3	0																				
263	1.3.3.7	0%	Cables	60 days	Thu 10/2/03	Tue 12/30/03		\$8,000	2400	0	0																				
264	1.3.3.7.4	0%	Cables schedule conting	20 days	Thu 10/2/03	Wed 10/29/03		\$0	0	0	0																				
265	1.3.3.7.1	0%	Finder3D to Stereo Associ	4 wks	Thu 10/30/03	Wed 11/26/03	%,MANDS[4,000]	\$4,000	1200	0.3	0.5																				
266	1.3.3.7.2	0%	Linker Output Module-II to	4 wks	Mon 12/1/03	Tue 12/30/03	%,MANDS[4,000]	\$4,000	1200	0.3	0.5																				
267	1.3.3.8	20%	Linker Modules	749 days	Thu 10/3/02	Tue 9/27/05		\$259,544	73593.2	0	0																				
268	1.3.3.8.1	30%	Prototype Linker Module	369 days	Thu 10/3/02	Fri 3/26/04		\$62,037	15856.1	0	0																				
269	1.3.3.8.1.11	100%	Prototype Linker Mc	20 days	Thu 10/3/02	Wed 10/30/02		\$0	0	0	0																				
270	1.3.3.8.1.1	44%	Prototype Linker Mod	22.5 wks	Thu 10/31/02	Wed 4/16/03	NDSPASSL[6,200]	\$6,200	3100	0.5	0.5																				

ID	WBS	% Compl	Task Name	Baseline Dur	Start	Finish	Resources	Cost	Cont. \$	M&S Cc	Labor C	2002				2003				2004				2005				2006		
												Q1	Q2	Q3	Q4	Q1	Q2	Q3	Q4	Q1	Q2	Q3	Q4	Q1	Q2	Q3	Q4	Q1	Q2	Q3
316	1.3.3.10.3.5	0%	Modification of Schen	3 wks	Tue 11/30/04	Mon 12/20/04	INKIND[2,232]	\$2,232	0	0.5	0.5																			
317	1.3.3.10.3.6	0%	Preproduction Stereo	1 wk	Tue 12/21/04	Wed 12/29/04		\$0	0	0	0																			
318	1.3.3.10.3.7	0%	Preproduction Stereo	4 wks	Thu 12/30/04	Mon 1/31/05	NDSPASS[13,750]	\$13,750	4125	0.3	0																			
319	1.3.3.10.3.8	0%	Preproduction Stereo	4 wks	Tue 2/1/05	Mon 2/28/05	PostDoc	\$0	0	0	0.5																			
320	1.3.3.10.4	0%	Production Stereo Assoc	121 days	Tue 3/1/05	Thu 8/18/05		\$133,080	44540	0	0																			
321	1.3.3.10.4.1	0%	Modification of Schen	4 wks	Tue 3/1/05	Mon 3/28/05	NDSPASSL[1,240]	\$1,240	620	0.5	0.5																			
322	1.3.3.10.4.2	0%	Production Readines	1 day	Tue 3/29/05	Tue 3/29/05		\$0	0	0	0																			
323	1.3.3.10.4.3	0%	Production Stereo As	8 wks	Wed 3/30/05	Tue 5/24/05	DSPASS[110,000]	\$110,000	33000	0.3	0																			
324	1.3.3.10.4.4	0%	Production Stereo As	9 wks	Wed 5/25/05	Thu 7/28/05	DSPASSL[21,840]	\$21,840	10920	0.5	0.5																			
325	1.3.3.10.4.6	0%	XFT Production Ster	0 days	Thu 8/18/05	Thu 8/18/05		\$0	0	0	0																			
326	1.3.3.10.5	0%	Production Stereo Assoc	121 days	Tue 3/1/05	Thu 8/18/05		\$26,040	0	0	0																			
327	1.3.3.10.5.1	0%	Modification of Schen	4 wks	Tue 3/1/05	Mon 3/28/05	INKIND[3,720]	\$3,720	0	0.5	0.5																			
328	1.3.3.10.5.2	0%	Production Stereo As	12 wks	Wed 5/25/05	Thu 8/18/05	%],INKIND[22,320]	\$22,320	0	0.5	0.5																			
329	1.3.3.10.6	0%	Purchase VME crate	4 wks	Wed 7/23/03	Tue 8/19/03	NDSPASS[15,000]	\$15,000	7500	0.5	0																			
330	1.3.3.11	23%	Stereo Association Module C	365 days	Thu 10/3/02	Fri 3/19/04		\$11,540	3770	0	0																			
331	1.3.3.11.6	100%	Stereo Assoc. Module Ci	60 days	Thu 10/3/02	Wed 1/8/03		\$0	0	0	0																			
332	1.3.3.11.1	10%	Stereo Assoc. Module Cus	32 wks	Mon 3/3/03	Wed 10/15/03	ANDSPASSL[744]	\$744	372	0.5	0.5																			
333	1.3.3.11.2	0%	Stereo Association Module	12 wks	Thu 10/16/03	Thu 1/15/04	ANDSPASSL[372]	\$372	186	0.5	0.5																			
334	1.3.3.11.3	0%	Stereo Association Module	4 wks	Fri 1/16/04	Fri 2/13/04	NDSPASS[10,000]	\$10,000	3000	0.3	0																			
335	1.3.3.11.4	0%	Stereo Association Module	1 wk	Mon 2/16/04	Fri 2/20/04	ANDSPASSL[300]	\$300	150	0.5	0.5																			
336	1.3.3.11.5	0%	Stereo Association Module	4 wks	Mon 2/23/04	Fri 3/19/04	ANDSPASSL[124]	\$124	62	0.5	0.5																			
337	1.3.3.12	4%	Stereo Association Module C	265 days	Mon 3/3/03	Fri 3/19/04		\$3,720	0	0	0																			
338	1.3.3.12.1	10%	Stereo Assoc. Module Cus	12 wks	Mon 3/3/03	Fri 5/23/03	INKIND[2,232]	\$2,232	0	0.5	0.5																			
339	1.3.3.12.2	0%	Stereo Association Module	12 wks	Thu 10/16/03	Thu 1/15/04	5%],INKIND[1,116]	\$1,116	0	0.5	0.5																			
340	1.3.3.12.3	0%	Stereo Association Module	4 wks	Mon 2/23/04	Fri 3/19/04	10%],INKIND[372]	\$372	0	0.5	0.5																			
341	1.3.3.13	1%	Stereo Association Module T	270 days	Thu 10/16/03	Wed 11/10/04		\$28,888	11444	0	0																			
342	1.3.3.13.1	5%	Stereo Association Module	16 wks	Thu 10/16/03	Fri 2/13/04	NDSPASSL[2,976]	\$2,976	1488	0.5	0.5																			
343	1.3.3.13.2	0%	Stereo Association Module	8 wks	Mon 2/16/04	Fri 4/9/04	NDSPASSL[3,472]	\$3,472	1736	0.5	0.5																			
344	1.3.3.13.3	0%	Stereo Association Module	8 wks	Mon 4/12/04	Mon 6/7/04	NDSPASS[15,000]	\$15,000	4500	0.3	0																			
345	1.3.3.13.4	0%	Stereo Association Module	20 wks	Mon 4/12/04	Tue 8/31/04	NDSPASSL[1,240]	\$1,240	620	0.5	0.5																			
346	1.3.3.13.5	0%	Stereo Association Module	10 wks	Wed 9/1/04	Wed 11/10/04	NDSPASSL[6,200]	\$6,200	3100	0.5	0.5																			
347	1.3.3.14	1%	Stereo Association Module T	270 days	Thu 10/16/03	Wed 11/10/04		\$41,664	0	0	0																			
348	1.3.3.14.1	5%	Stereo Association Module	16 wks	Thu 10/16/03	Fri 2/13/04	INKIND[8,928]	\$8,928	0	0.5	0.5																			
349	1.3.3.14.2	0%	Stereo Association Module	8 wks	Mon 2/16/04	Fri 4/9/04	%],INKIND[10,416]	\$10,416	0	0.5	0.5																			
350	1.3.3.14.3	0%	Stereo Association Module	20 wks	Mon 4/12/04	Tue 8/31/04	%],INKIND[3,720]	\$3,720	0	0.5	0.5																			
351	1.3.3.14.4	0%	Stereo Association Module	10 wks	Wed 9/1/04	Wed 11/10/04	%],INKIND[18,600]	\$18,600	0	0.5	0.5																			
352	1.3.3.15	22%	Stereo Association Module T	195 days	Mon 3/17/03	Fri 12/19/03		\$16,054	5027	0	0																			
353	1.3.3.15.5	100%	Stereo Assoc. Module Tr	40 days	Mon 3/17/03	Fri 5/9/03		\$0	0	0	0																			
354	1.3.3.15.1	5%	Stereo Association Module	12 wks	Mon 5/12/03	Tue 8/5/03	ANDSPASSL[744]	\$744	372	0.5	0.5																			
355	1.3.3.15.2	0%	Stereo Association Module	5 wks	Wed 8/6/03	Wed 9/10/03	ANDSPASSL[310]	\$310	155	0.5	0.5																			
356	1.3.3.15.3	0%	Stereo Association Module	8 wks	Thu 9/11/03	Wed 11/5/03	NDSPASS[15,000]	\$15,000	4500	0.3	0																			
357	1.3.3.15.4	0%	Stereo Association Module	6 wks	Thu 11/6/03	Fri 12/19/03	PostDoc	\$0	0	0	0.5																			
358	1.3.3.16	4%	Stereo Association Module T	85 days	Mon 5/12/03	Wed 9/10/03		\$3,162	0	0	0																			
359	1.3.3.16.1	5%	Stereo Association Module	12 wks	Mon 5/12/03	Tue 8/5/03	INKIND[2,232]	\$2,232	0	0.5	0.5																			
360	1.3.3.16.2	0%	Stereo Association Module	5 wks	Wed 8/6/03	Wed 9/10/03	itDoc,INKIND[930]	\$930	0	0.5	0.5																			

ID	WBS	% Compl	Task Name	Baseline Dur	Start	Finish	Resources	Cost	Cont. \$	M&S Cc	Labor C	2002				2003				2004				2005				2006			
												Q1	Q2	Q3	Q4	Q1	Q2	Q3	Q4	Q1	Q2	Q3	Q4	Q1	Q2	Q3	Q4	Q1	Q2	Q3	Q4
361	1.3.3.17	22%	Stereo Association Module C	185 days	Mon 4/7/03	Tue 12/30/03		\$13,348	4674	0	0																				
362	1.3.3.17.5	100%	Stereo Assoc. Module CI	40 days	Mon 4/7/03	Mon 6/2/03		\$0	0	0	0																				
363	1.3.3.17.1	0%	Stereo Association Module	12 wks	Tue 6/3/03	Tue 8/26/03	NDSPASSL[1,488]	\$1,488	744	0.5	0.5																				
364	1.3.3.17.2	0%	Stereo Association Module	6 wks	Wed 8/27/03	Wed 10/8/03	NDSPASSL[1,860]	\$1,860	930	0.5	0.5																				
365	1.3.3.17.3	0%	Stereo Association Module	7 wks	Thu 10/9/03	Wed 11/26/03	NDSPASS[10,000]	\$10,000	3000	0.3	0																				
366	1.3.3.17.4	0%	Stereo Association Modul	4 wks	Mon 12/1/03	Tue 12/30/03	PostDoc	\$0	0	0	0.5																				
367	1.3.3.18	0%	Stereo Association Module C	90 days	Tue 6/3/03	Wed 10/8/03		\$10,044	0	0	0																				
368	1.3.3.18.1	0%	Stereo Association Module	12 wks	Tue 6/3/03	Tue 8/26/03	INKIND[4,464]	\$4,464	0	0.5	0.5																				
369	1.3.3.18.2	0%	Stereo Association Module	6 wks	Wed 8/27/03	Wed 10/8/03	oc,INKIND[5,580]	\$5,580	0	0.5	0.5																				
370	1.3.3.19	22%	SAM Clock and Control Trans	185 days	Mon 4/7/03	Tue 12/30/03		\$13,348	4674	0	0																				
371	1.3.3.19.5	100%	SAM Clock and Control T	40 days	Mon 4/7/03	Mon 6/2/03		\$0	0	0	0																				
372	1.3.3.19.1	0%	SAM Clock and Control TM	12 wks	Tue 6/3/03	Tue 8/26/03	NDSPASSL[1,488]	\$1,488	744	0.5	0.5																				
373	1.3.3.19.2	0%	SAM Clock and Control TM	6 wks	Wed 8/27/03	Wed 10/8/03	NDSPASSL[1,860]	\$1,860	930	0.5	0.5																				
374	1.3.3.19.3	0%	SAM Clock and Control TM	7 wks	Thu 10/9/03	Wed 11/26/03	NDSPASS[10,000]	\$10,000	3000	0.3	0																				
375	1.3.3.19.4	0%	SAM Clock and Control T	4 wks	Mon 12/1/03	Tue 12/30/03	PostDoc	\$0	0	0	0.5																				
376	1.3.3.20	0%	SAM Clock and Control Trans	90 days	Tue 6/3/03	Wed 10/8/03		\$10,044	0	0	0																				
377	1.3.3.20.1	0%	SAM Clock and Control TM	12 wks	Tue 6/3/03	Tue 8/26/03	INKIND[4,464]	\$4,464	0	0.5	0.5																				
378	1.3.3.20.2	0%	SAM Clock and Control TM	6 wks	Wed 8/27/03	Wed 10/8/03	oc,INKIND[5,580]	\$5,580	0	0.5	0.5																				
379	1.3.3.21	0%	Level 2 Interface Board	175 days	Fri 1/2/04	Wed 9/8/04		\$47,280	9410	0	0																				
380	1.3.3.21.1	0%	Level 2 Interface Board Sc	8 wks	Fri 1/2/04	Fri 2/27/04	INKIND[14,880]	\$14,880	0	0.5	0.5																				
381	1.3.3.21.2	0%	Level 2 Interface Board Sc	8 wks	Fri 1/2/04	Fri 2/27/04	NDSPASSL[4,960]	\$4,960	2480	0.5	0.5																				
382	1.3.3.21.3	0%	Prototype Level 2 Interfac	8 wks	Mon 3/1/04	Fri 4/23/04	NDSPASS[5,000]	\$5,000	1500	0.3	0																				
383	1.3.3.21.4	0%	Modification Level 2 Interf	3 wks	Mon 4/26/04	Fri 5/14/04	INKIND[5,580]	\$5,580	0	0.5	0.5																				
384	1.3.3.21.5	0%	Modification Level 2 Interf	3 wks	Mon 4/26/04	Fri 5/14/04	NDSPASSL[1,860]	\$1,860	930	0.5	0.5																				
385	1.3.3.21.6	0%	Production Level 2 Interfac	8 wks	Mon 5/17/04	Tue 7/13/04	NDSPASS[15,000]	\$15,000	4500	0.3	0																				
386	1.3.3.21.7	0%	Level 2 Interface Board ch	8 wks	Wed 7/14/04	Wed 9/8/04	Physicist	\$0	0	0	0.5																				
387	1.3.3.23	0%	XFT Ready for Installation at	0 days	Thu 9/29/05	Thu 9/29/05		\$0	0	0	0																				
388	1.3.4	19%	Event-Builder Upgrade	799 days	Mon 3/4/02	Thu 5/5/05		\$414,000	124200	0	0																				
389	1.3.4.1	100%	Start Event-Builder Upgrade	0 days	Mon 3/4/02	Mon 3/4/02		\$0	0	0	0																				
390	1.3.4.2	100%	technology evaluation	6.05 mons	Thu 12/5/02	Fri 5/30/03	PostDoc[40%]	\$0	0	0.3	0																				
391	1.3.4.3	0%	upgrade software	160 days	Fri 11/21/03	Thu 7/15/04		\$0	0	0	0																				
392	1.3.4.3.1	0%	decide on the OS versions	10 days	Fri 11/21/03	Tue 12/9/03	0%],PostDoc[50%]	\$0	0	0	0.5																				
393	1.3.4.3.2	0%	test available drivers for cc	15 days	Tue 12/9/03	Mon 1/5/04	U.CompProfF[0%]	\$0	0	0	0.5																				
394	1.3.4.3.3	0%	adjust drivers for special n	130 days	Mon 1/5/04	Thu 7/8/04	6],CompProfF[0%]	\$0	0	0	0.5																				
395	1.3.4.3.4	0%	adjust remaining software	5 days	Thu 7/8/04	Thu 7/15/04	U.CompProfF[0%]	\$0	0	0	0.5																				
396	1.3.4.3.5	0%	MS: establish general fu	0 days	Thu 7/15/04	Thu 7/15/04		\$0	0	0	0																				
397	1.3.4.4	0%	construct prototype	135 days	Wed 12/10/03	Thu 6/24/04		\$103,500	31050	0	0																				
398	1.3.4.4.1	0%	purchase prototype syst	120 days	Wed 12/10/03	Thu 6/3/04		\$103,500	31050	0	0																				
399	1.3.4.4.1.1	0%	submit PO and impl	0 days	Wed 12/10/03	Wed 12/10/03		\$0	0	0	0																				
400	1.3.4.4.1.5	0%	EVB Construct prot	60 days	Thu 12/11/03	Wed 3/10/04		\$0	0	0	0																				
401	1.3.4.4.1.2	0%	purchase formalities	60 days	Thu 3/11/04	Thu 6/3/04	MANDS[103,500]	\$103,500	31050	0.3	0																				
402	1.3.4.4.1.4	0%	Arrival of the protot	0 days	Thu 6/3/04	Thu 6/3/04		\$0	0	0	0																				
403	1.3.4.4.2	0%	install test stand	5 days	Fri 6/4/04	Thu 6/10/04	oc[20%],StudentU	\$0	0	0	0.5																				
404	1.3.4.4.3	0%	evaluate test stand	10 days	Fri 6/11/04	Thu 6/24/04	ntU,PostDoc[20%]	\$0	0	0	0.5																				
405	1.3.4.4.4	0%	MS: establish functionali	0 days	Thu 6/24/04	Thu 6/24/04		\$0	0	0	0																				



ID	WBS	% Compl	Task Name	Baseline Dur	Start	Finish	Resources	Cost	Cont. \$	M&S Cc	Labor C	2002				2003				2004				2005				2006		
												Q1	Q2	Q3	Q4	Q1	Q2	Q3	Q4	Q1	Q2	Q3	Q4	Q1	Q2	Q3	Q4	Q1	Q2	Q3
406	1.3.4.5	0%	construct full size system	171 days	Thu 6/24/04	Thu 3/3/05		\$310,500	93150	0	0																			
407	1.3.4.5.8	0%	EVB construct full size s	90 days	Fri 6/25/04	Mon 11/1/04		\$0	0	0	0																			
408	1.3.4.5.1	0%	Production Readiness Rev	1 day	Tue 11/2/04	Tue 11/2/04		\$0	0	0	0																			
409	1.3.4.5.3	0%	Event Builder Production	0 days	Thu 6/24/04	Thu 6/24/04		\$0	0	0	0																			
410	1.3.4.5.4	0%	purchase remaining hard	60 days	Tue 11/2/04	Thu 2/3/05		\$310,500	93150	0	0																			
411	1.3.4.5.4.1	0%	submit PO and impl	0 days	Tue 11/2/04	Tue 11/2/04		\$0	0	0	0																			
412	1.3.4.5.4.2	0%	purchase formalities	60 days	Wed 11/3/04	Thu 2/3/05	MANDS[310,500]	\$310,500	93150	0.3	0																			
413	1.3.4.5.4.4	0%	Arrival of the Event	0 days	Thu 2/3/05	Thu 2/3/05		\$0	0	0	0																			
414	1.3.4.5.5	0%	assemble new hardware ir	10 days	Fri 2/4/05	Thu 2/17/05	oc[20%],StudentU	\$0	0	0	0.5																			
415	1.3.4.5.6	0%	evaluate the new hardwar	10 days	Fri 2/18/05	Thu 3/3/05	ntU,PostDoc[20%]	\$0	0	0	0.5																			
416	1.3.4.5.7	0%	MS: establish functionali	0 days	Thu 3/3/05	Thu 3/3/05		\$0	0	0	0																			
417	1.3.4.6	0%	commissioning of hardware and	45 days	Fri 3/4/05	Thu 5/5/05		\$0	0	0.3	0.5																			
418	1.3.4.8	0%	Finish Event-Builder Upgrad	0 days	Thu 5/5/05	Thu 5/5/05		\$0	0	0	0																			
419	1.3.5	4%	Computer for Level3 PC Farm / D	489 days	Fri 5/2/03	Thu 4/14/05		\$382,500	114750	0	0																			
420	1.3.5.1	100%	Start Computers for Level3 P	0 days	Fri 5/2/03	Fri 5/2/03		\$0	0	0	0																			
421	1.3.5.2	19%	replace 10 DAQ PCs (2003)	110 days	Mon 5/5/03	Wed 10/8/03		\$15,000	4500	0	0																			
422	1.3.5.2.1	0%	submit PO and implemei	0 days	Tue 6/3/03	Tue 6/3/03		\$0	0	0	0																			
423	1.3.5.2.8	100%	Replace 10 DAQ PCs scl	20 days	Mon 5/5/03	Mon 6/2/03		\$0	0	0	0																			
424	1.3.5.2.2	0%	purchase formalities	60 days	Tue 6/3/03	Tue 8/26/03	MANDS[15,000]	\$15,000	4500	0.3	0																			
425	1.3.5.2.3	0%	install and test one prototy	10 days	Wed 8/27/03	Wed 9/10/03	oc[20%],StudentU	\$0	0	0	0.5																			
426	1.3.5.2.5	0%	Arrival of 0/10 PCs from	0 days	Wed 9/10/03	Wed 9/10/03		\$0	0	0	0																			
427	1.3.5.2.6	0%	burn in phase	10 days	Thu 9/18/03	Wed 10/1/03	StudentU[50%]	\$0	0	0	0.5																			
428	1.3.5.2.7	0%	installation into the DAQ s	5 days	Thu 10/2/03	Wed 10/8/03	oc[20%],StudentU	\$0	0	0	0.5																			
429	1.3.5.3	0%	replace 15 DAQ PCs (2004)	110 days	Tue 10/5/04	Wed 3/16/05		\$22,500	6750	0	0																			
430	1.3.5.3.1	0%	submit PO and implemei	0 days	Tue 11/2/04	Tue 11/2/04		\$0	0	0	0																			
431	1.3.5.3.8	0%	Replace 15 DAQ PCs scl	20 days	Tue 10/5/04	Mon 11/1/04		\$0	0	0	0																			
432	1.3.5.3.2	0%	purchase formalities	60 days	Tue 11/2/04	Wed 2/2/05	MANDS[22,500]	\$22,500	6750	0.3	0																			
433	1.3.5.3.3	0%	install and test one prototy	10 days	Thu 2/3/05	Wed 2/16/05	oc[20%],StudentU	\$0	0	0	0.5																			
434	1.3.5.3.4	0%	arrival of 15 DAQ PCs fr	0 days	Wed 2/23/05	Wed 2/23/05		\$0	0	0	0																			
435	1.3.5.3.5	0%	burn in phase	10 days	Thu 2/24/05	Wed 3/9/05	StudentU[50%]	\$0	0	0	0.5																			
436	1.3.5.3.6	0%	installation into the DAQ s	5 days	Thu 3/10/05	Wed 3/16/05	oc[20%],StudentU	\$0	0	0	0.5																			
437	1.3.5.4	0%	replace 20 DAQ PCs (2005)	125 days	Wed 10/13/04	Thu 4/14/05		\$30,000	9000	0	0																			
438	1.3.5.4.1	0%	submit PO and implemei	0 days	Fri 12/10/04	Fri 12/10/04		\$0	0	0	0																			
439	1.3.5.4.8	0%	Replace 20 DAQ PCs scl	40 days	Wed 10/13/04	Thu 12/9/04		\$0	0	0	0																			
440	1.3.5.4.2	0%	purchase formalities	60 days	Fri 12/10/04	Thu 3/10/05	MANDS[30,000]	\$30,000	9000	0.3	0																			
441	1.3.5.4.3	0%	install and test one prototy	10 days	Fri 3/1/05	Thu 3/24/05	oc[20%],StudentU	\$0	0	0	0.5																			
442	1.3.5.4.4	0%	arrival of 20 DAQ PCs fr	0 days	Thu 3/24/05	Thu 3/24/05		\$0	0	0	0																			
443	1.3.5.4.5	0%	burn in phase	10 days	Fri 3/25/05	Thu 4/7/05	StudentU[50%]	\$0	0	0	0.5																			
444	1.3.5.4.6	0%	installation into the DAQ s	5 days	Fri 4/8/05	Thu 4/14/05	ntU,PostDoc[20%]	\$0	0	0	0.5																			
445	1.3.5.5	0%	replace 70 Level 3 PCs (2004)	96 days	Tue 11/2/04	Thu 3/24/05		\$105,000	31500	0	0																			
446	1.3.5.5.1	0%	submit PO and implemei	0 days	Tue 11/2/04	Tue 11/2/04		\$0	0	0	0																			
447	1.3.5.5.2	0%	purchase formalities	60 days	Tue 11/2/04	Wed 2/2/05	MANDS[105,000]	\$105,000	31500	0.3	0																			
448	1.3.5.5.3	0%	install and test one prototy	10 days	Thu 2/3/05	Wed 2/16/05	oc[20%],StudentU	\$0	0	0	0.5																			
449	1.3.5.5.5	0%	Arrival of 70 Level3 and	0 days	Thu 3/24/05	Thu 3/24/05		\$0	0	0	0																			
450	1.3.5.5.6	0%	burn in phase	10 days	Thu 2/24/05	Wed 3/9/05	StudentU[50%]	\$0	0	0	0.5																			



ID	WBS	% Compl	Task Name	Baseline Dur	Start	Finish	Resources	Cost	Cont. \$	M&S Cc	Labor C	2002				2003				2004				2005				2006		
												Q1	Q2	Q3	Q4	Q1	Q2	Q3	Q4	Q1	Q2	Q3	Q4	Q1	Q2	Q3	Q4	Q1	Q2	Q3
451	1.3.5.5.7	0%	installation into the DAQ s	5 days	Thu 3/10/05	Wed 3/16/05	oc[20%],StudentU	\$0	0	0	0.5																			
452	1.3.5.6	0%	replace 140 Level 3 PCs (200	85 days	Fri 12/10/04	Thu 4/14/05		\$210,000	63000	0	0																			
453	1.3.5.6.1	0%	submit PO and implemei	0 days	Fri 12/10/04	Fri 12/10/04		\$0	0	0	0																			
454	1.3.5.6.2	0%	purchase formalities	60 days	Fri 12/10/04	Thu 3/10/05	MANDS[210,000]	\$210,000	63000	0.3	0																			
455	1.3.5.6.3	0%	install and test one prototy	10 days	Fri 3/11/05	Thu 3/24/05	oc[20%],StudentU	\$0	0	0	0.5																			
456	1.3.5.6.5	0%	Arrival of 140/20 PCs fro	0 days	Thu 3/24/05	Thu 3/24/05		\$0	0	0	0																			
457	1.3.5.6.6	0%	burn in phase	10 days	Fri 3/25/05	Thu 4/7/05	StudentU[50%]	\$0	0	0	0.5																			
458	1.3.5.6.7	0%	installation into the DAQ s	5 days	Fri 4/8/05	Thu 4/14/05	ntU,PostDoc[20%]	\$0	0	0	0.5																			
459	1.3.5.8	0%	Finish Purchase of Computei	0 days	Thu 4/14/05	Thu 4/14/05		\$0	0	0	0																			
460	1.3.6	0%	SVT upgrade	220 days	Mon 2/2/04	Mon 12/13/04		\$231,600	69480	0	0																			
461	1.3.6.1	0%	Start of SVT upgrade	0 days	Mon 2/2/04	Mon 2/2/04		\$0	0	0	0																			
462	1.3.6.2	0%	trackfitter boards	220 days	Tue 2/3/04	Mon 12/13/04		\$161,600	48480	0	0																			
463	1.3.6.2.3	0%	SVT Trackfitter boards s	100 days	Tue 2/3/04	Tue 6/22/04		\$0	0	0	0																			
464	1.3.6.2.1	0%	Upgrade SVT trackfitters (6 mons	Wed 6/23/04	Mon 12/13/04	DSPASSL[33,600]	\$161,600	48480	0.3	0.5																			
465	1.3.6.2.2	0%	Upgrade SVT trackfitters (6 mons	Wed 6/23/04	Mon 12/13/04	INKIND[0]	\$0	0	0.5	0.5																			
466	1.3.6.3	0%	Merger boards	100 days	Tue 2/3/04	Tue 6/22/04		\$70,000	21000	0	0																			
467	1.3.6.3.1	0%	Upgrade SVT merger boar	100 days	Tue 2/3/04	Tue 6/22/04	INKIND[70,000]	\$70,000	21000	0.3	0.3																			
468	1.3.6.5	0%	SVT ready for installation	0 days	Mon 12/13/04	Mon 12/13/04		\$0	0	0	0																			
469	1.3.8	0%	Finish Run 2b Trigger DAQ projec	0 days	Fri 9/30/05	Fri 9/30/05		\$0	0	0	0																			
470	1.3.9	0%	Data Acquisition and Trigger Upg	0 days	Tue 1/17/06	Tue 1/17/06		\$0	0	0	0																			

