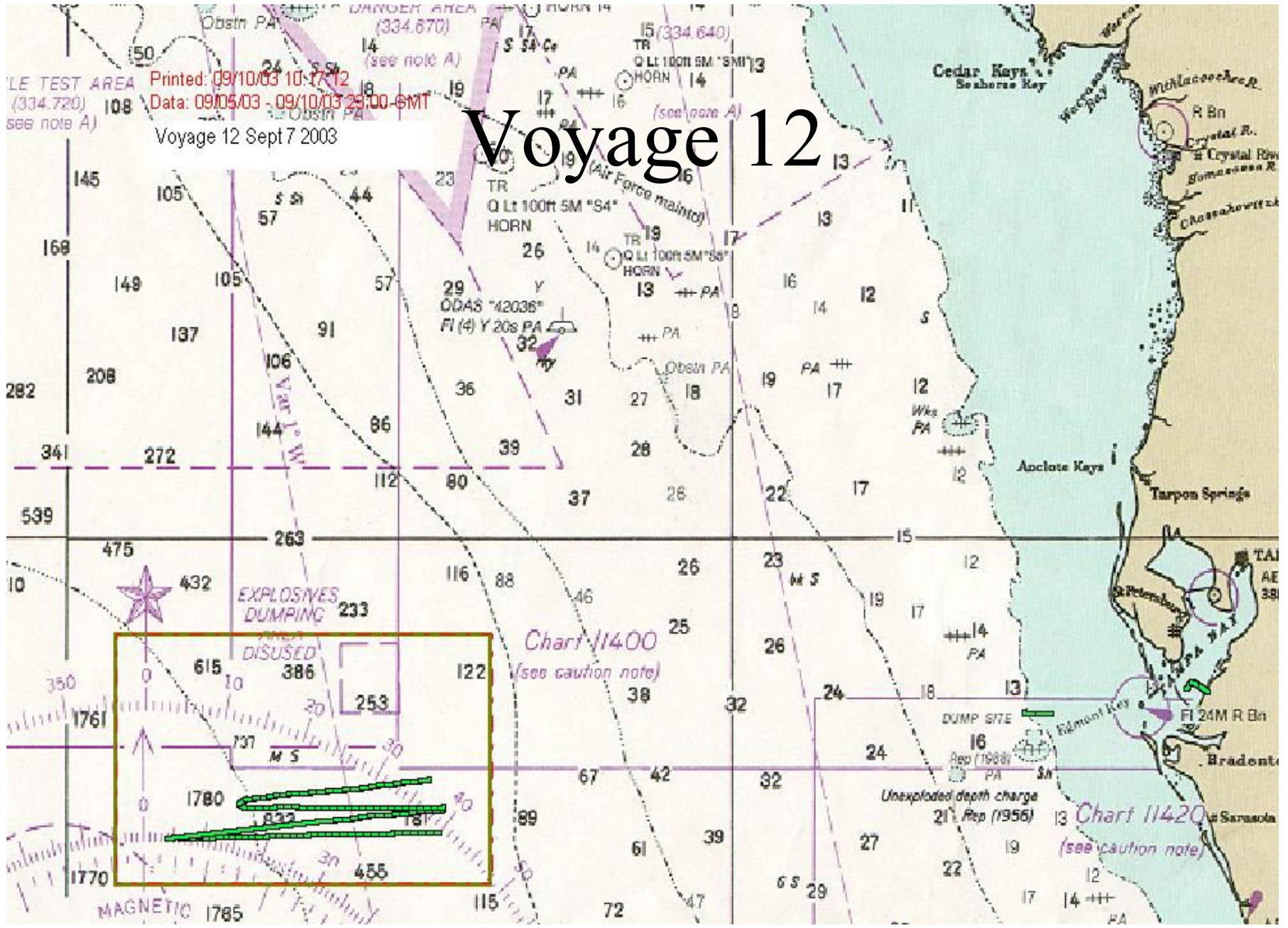
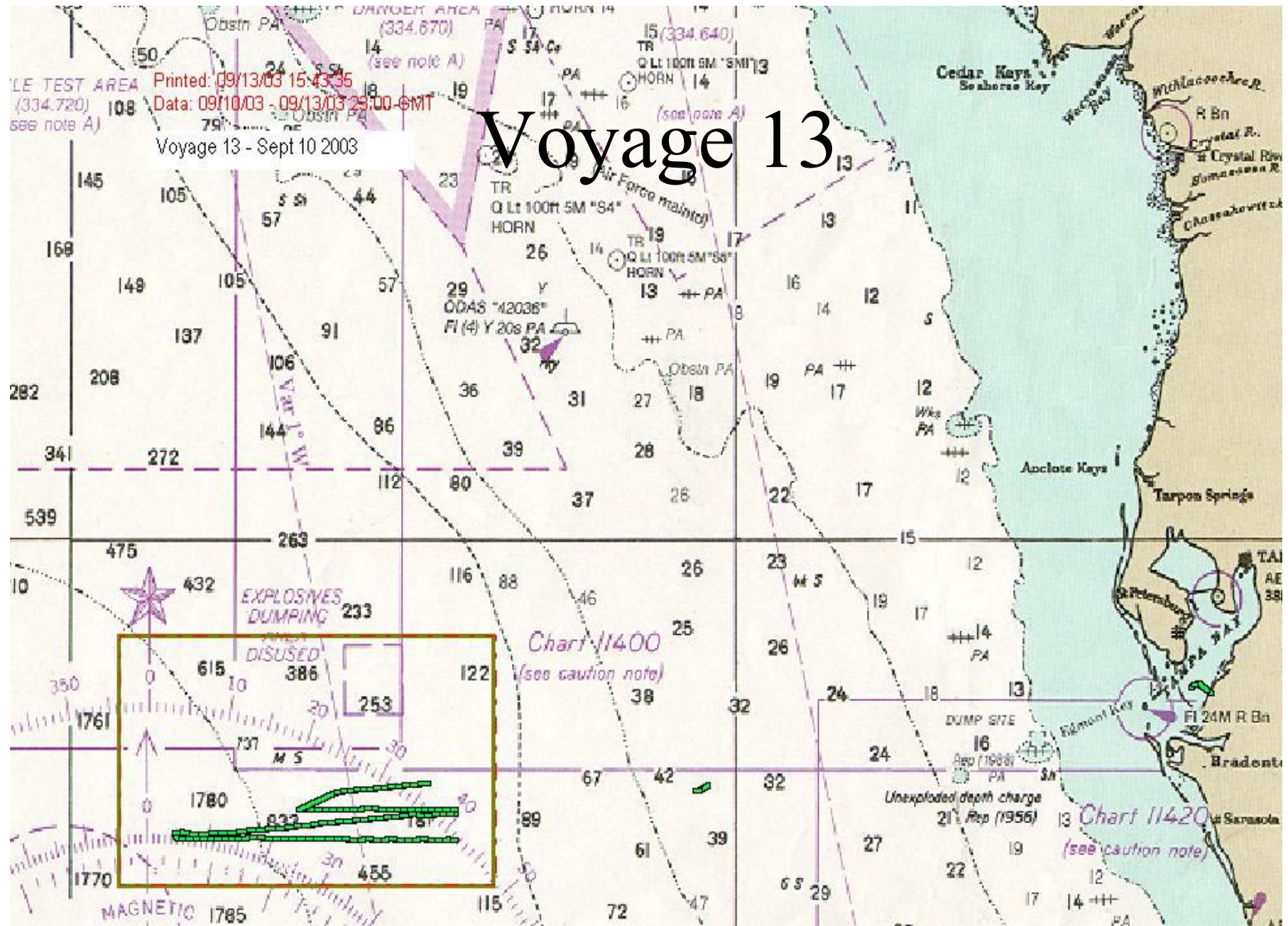


LE TEST AREA
(334.720)
see note A)

Printed: 09/10/03 10:17:12
Data: 09/05/03 - 09/10/03 23:00 GMT
Voyage 12 Sept 7 2003

Voyage 12





LE TEST AREA
(334.720)
see note A)

Printed: 09/13/03 15:43:35
Data: 09/10/03 - 09/13/03 23:00 GMT
Voyage 13 - Sept 10 2003

Voyage 13

Chart 11400
(see caution note)

Chart 11420
(see caution note)

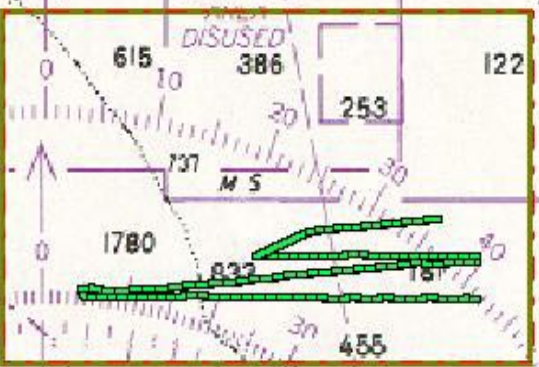
MAGNETIC 1785

Unexploded depth charge
21' Rep (1956)

DUMP SITE
16
Rep (1988)

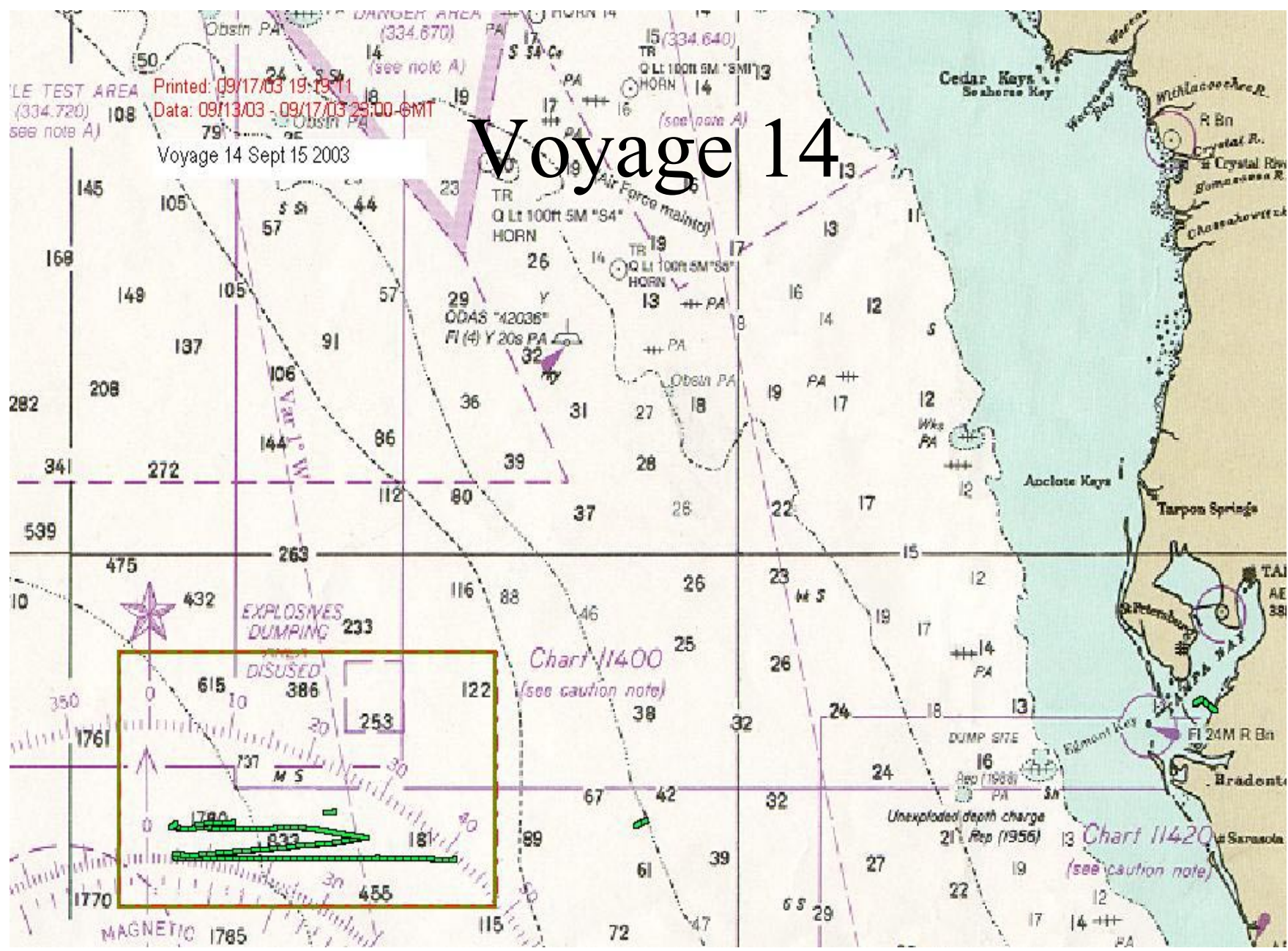
EXPLOSIVES
DUMPING

DISUSED



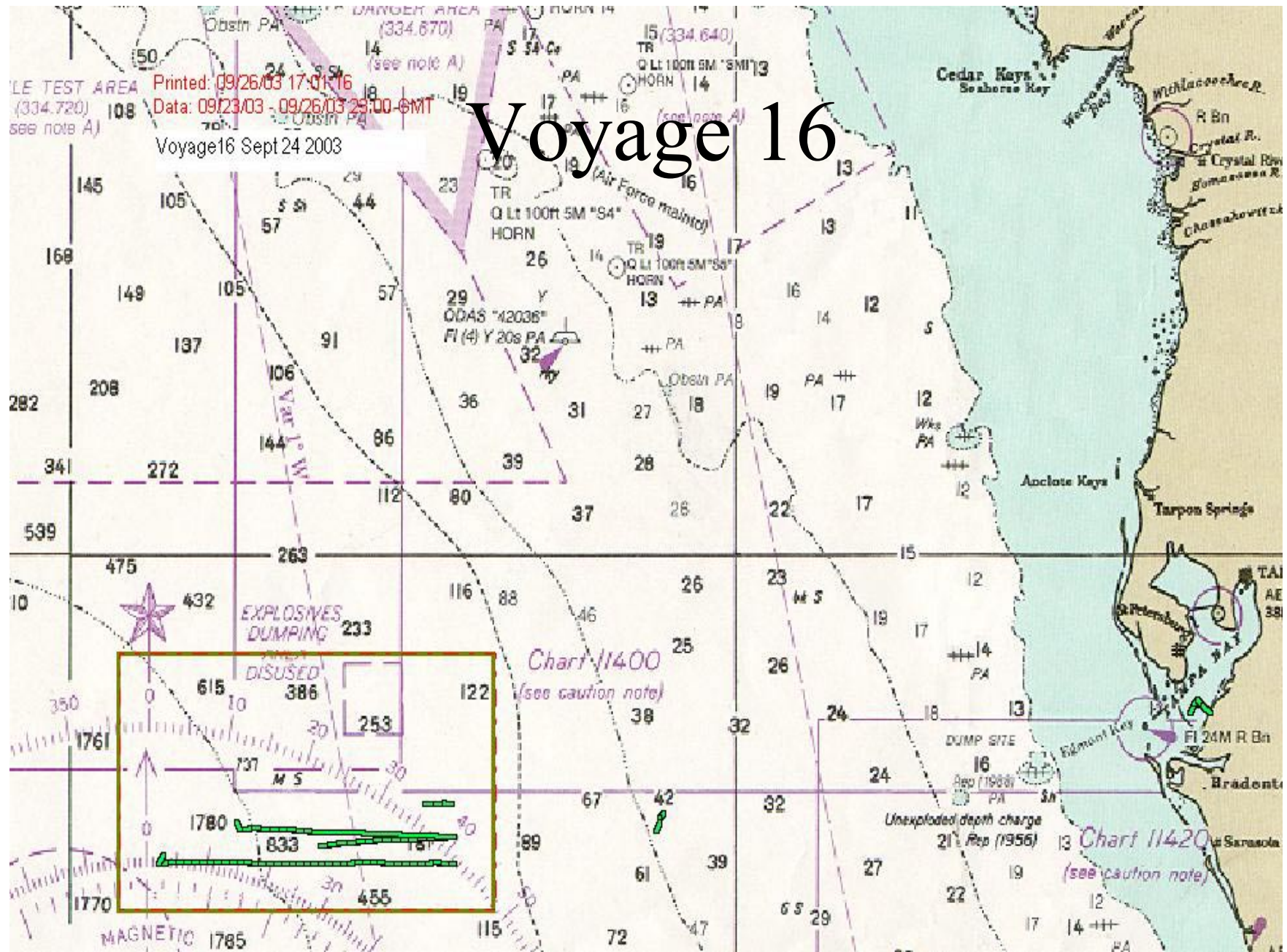
Voyage 14

Printed: 09/17/03 19:19:11
Data: 09/13/03 - 09/17/03 23:00 GMT
Voyage 14 Sept 15 2003



Voyage 16

Printed: 09/26/03 17:01:16
Data: 09/23/03 - 09/26/03 23:00 GMT
Voyage 16 Sept 24 2003



Special Condition 19 A

Time & Date Vessel Loading Begins and Ends

Voyage	Date	Time @ Start	Date	Time @ Stop
11	08/29/03	10:42	08/31/03	2:18
12	09/02/03	20:48	09/04/03	13:36
13	09/08/03	23:30	09/09/03	00:12
14	09/13/03	10:54	09/15/03	3:24
15	09/17/03	18:00	09/19/03	12:30
16	09/22/03	04:42	09/23/03	20:54

Special Condition 19 B

Volume of Load

Voyage	Volume (Gallons)
11	6,911,853
12	6,912,200
13	6,895,684
14	6,895,082
15	6,942,704
16	6,922,424

Special Condition 19 C

Time, Position and Water Depth When Each Dispersion Begins and Ends

Voyage	Date	Time	Start			Depth (Fathoms)	Date	Time	End		Depth (Fathoms)
			Lat.	Lon.	Lat.				Lon.		
11	08/31/03	20:30	27-17.57	84-50.00	900	#####	6:30	27-26.18	84-48.32	900	
12	09/07/03	01:15	27-18.21	84-52.51	1080	#####	9:00	27-25.73	85-54.06	900	
13	09/11/03	11:30	27-17.43	84-50.66	780	#####	20:00	27-25.97	84-50.40	1050	
14	09/15/03	19:45	27-17.48	84-51.91	780	#####	03:00	27-25.48	84-56.34	1200	
15	09/20/03	07:45	27-17.60	84-49.15	1050	#####	13:42	27-25.52	85-53.67	1140	
16	09/24/03	17:15	27-17.48	84-49.96	900	#####	23:15	27-25.65	84-50.39	880	

Special Condition 19 D

Date, Time, Position, Water Depth, Vessel Speed & Course, Wind Speed & Direction, Discharge Rate and Comments During Disper

Voyage	Date	Time	Lat.	Lon.	Depth (Fathoms)	Vessel Speed (Knots)	Course	Wind Speed Direction	Discharge Rate (GPM)	Comments	Discharge Rate (GPH)
11	08/31/03	2030	27 17.57	84 50.00	900	5.6	270	E 10-15	0		
	08/31/03	2045	27-17.49	84-51.57	1140	5.6	270	E 10-15	3458		207480
	08/31/03	2100	27-17.37	84-53.80	1140	5.6	270	E 10-15	3659.6		219576
	08/31/03	2115	27-17.28	84-55.62	1140	5.6	270	E 10-15	3231.2		193872
	08/31/03	2130	27-17.26	84-56.01	1380	5.6	270	E 10-15	3270.4		196224
	08/31/03	2145	27-17.28	84-58.22	1380	5.5	270	E 10-15	3710.8		222611
	08/31/03	2200	27-17.17	85-00.26	1380	5.4	270	E 10-15	3743.6		224616
	08/31/03	2215	27-17.19	85-02.87	1380	5.4	270	E 10-15	3981.6		238896

08/31/03	2230	27-17.30	85-03.00	1380	5.3	270	E 10-15	3990	239400
08/31/03	2245	27-17.42	85-04.89	1380	5.2	270	E 10-15	3908.8	234528
08/31/03	2300	27-17.51	85-05.61	1380	5.2	270	E 10-15	3872.4	232344
08/31/03	2315	27-17.40	85-07.41	3000	5.2	270	E 10-15	3696	221760
08/31/03	2330	27-17.38	85-08.82	3000	5.2	270	E 10-15	3673.6	220416
08/31/03	2345	27-17.35	85-10.59	3000	5.2	270	E 10-15	3911.6	234696
09/01/03	0000	27-17.32	85-12.47	3000	5.2	270	E 10-15	3900.4	234024
09/01/03	0015	27-17.41	85-14.00	3000	5.2	270	E 10-15	3670.8	220248
09/01/03	0030	27-17.51	85-15.98	3000	5.2	270	E 10-15	3514	210840
09/01/03	0045	27-17.56	85-17.76	3000	5.2	270	E 10-15	3312.4	198744
09/01/03	0100	27-17.61	85-19.27	3000	5.2	270	E 5-10	2623.6	157416
09/01/03	0115	27-17.69	85-20.92	3300	5.3	270	E 5-10	3169.6	190176
09/01/03	0130	27-17.72	85-22.19	3300	5.3	270	E 5-10	3428.3	205698
09/01/03	0145	27-17.70	85-24.25	3300	5.3	270	E 5-10	3894.8	233688
09/01/03	0200	27-17.65	85-25.32	4800	5.2	270	E 5-10	3911.6	234696
09/01/03	0215	27-17.51	85-26.23	4800	5.2	270	E 5-10	3584	215040
09/01/03	0230	27-17.25	85-27.15	4800	5.1	270	E 5-10	3612	216720
09/01/03	0245	27-17.18	85-28.69	4800	5.1	270	E 5-10	3586.8	215208
09/01/03	0300	27-17.10	85-29.32	10668	5.1	270	E 5-10	3609.2	216552
09/01/03	0315	27-17.12	85-30.78	10668	5.2	270	E 5-10	3906	234360
09/01/03	0330	27-17.21	85-32.87	10668	5.2	270	E 5-10	3928.4	235704
09/01/03	0345	27-17.69	85-34.38	10668	5.3	270	E 5-10	3782.8	226968
09/01/03	0400	27-17.82	85-36.02	10668	5.3	270	E 5-10	3673.6	220416
09/01/03	0415	27-17.47	85-37.93	10680	5.2	270	E 5-10	3782.8	226968
09/01/03	0430	27-17.49	85-39.02	10680	5.2	270	E 5-10	3752	225120
09/01/03	0445	27-17.50	85-39.36	10680	5.1	270	E 5-10	3614.8	216888
09/01/03	0500	27-17.51	85-39.71	10680	5.1	270	E 5-10	3554.3	213258
09/01/03	0515	27-17.52	85-40.00	10680	5.0	270	E 5-10	3906	234360
09/01/03	0530	27-17.67	85-40.16	10750	5.3	270	E 5-10	3917.2	235032
09/01/03	0545	27-17.81	85-41.23	10750	5.3	270	E 5-10	3102.4	186144
09/01/03	0600	27-17.41	85-42.61	10750	5.3	085	E 5-10	3273.2	196392
09/01/03	0615	27-17.60	85-42.82	10750	5.3	085	E 5-10	3480.4	208824
09/01/01	0630	27 18.08	85 42.29	10800	5.7	087	E 5-10	3547.6	212856
09/01/03	0645	27 18,10	85 40.70	10800	5.6	085	E 5-10	3679.2	220752
09/01/03	0700	27 18.17	85 39.05	10800	5.6	085	E 5-10	3830.4	229824
09/01/03	0715	27 18.20	85 37.54	10800	5.6	085	E 5-10	3964.8	237888
09/01/03	0730	27 18.31	85 35.98	10800	5.5	085	E 5-10	3992.8	239568
09/01/03	0745	27-18.39	85-34.43	10800	5.5	085	E 5-10	3628.8	217728
09/01/03	0800	27-18.48	85-32.90	10668	5.5	085	E 5-10	3634.4	218064
09/01/03	0815	27-18.56	85-31.36	10668	5.5	085	E 5-10	3614.8	216888
09/01/03	0830	27-18.68	85-29.83	9850	5.5	085	E 5-10	3668	220080
09/01/03	0845	27-18.83	85-28.31	6000	5.5	085	E 5-10	3903.2	234192
09/01/03	0900	27-19.00	85-26.81	6084	5.4	085	E 5-10	3976	238560
09/01/03	0915	27-19.19	85-25.30	4998	5.4	085	E 5-10	3771.6	226296
09/01/03	0930	27-19.40	85-23.84	5000	5.3	085	E 5-10	3780	226800
09/01/03	0945	27-19.62	85-22.38	4200	5.3	085	E 5-10	3858.4	231504
09/01/03	1000	27-19.90	85-20.95	4740	5.3	085	E 5-10	3917.2	235032
09/01/03	1015	27-20.14	85-19.50	3600	5.3	085	E 5-10	3469.2	208152
09/01/03	1030	27-20.25	85-18.03	2940	5.4	085	E 5-10	3533.6	212016
09/01/03	1045	27-20.40	85-16.56	2838	5.2	085	E 5-10	3732.4	223944
09/01/03	1100	27-20.53	85-15.12	2838	5.2	085	E 5-10	3752	225120
09/01/03	1115	27-20.62	85-13.68	2838	5.1	085	E 5-10	3959.2	237552
09/01/03	1130	27-20.72	85-12.22	1950	5.2	085	E 5-10	3978.8	238728
09/01/03	1145	27-20.81	85-10.74	1950	5.3	085	E-5-7	3925.6	235536
09/01/03	1200	27-20.87	85-09.24	3000	5.4	085	E 5-7	3855.6	231336
09/01/03	1215	27-20.89	85-07.71	3000	5.2	085	E 5-7	3850	231000
09/01/03	1230	27-20.94	85-06.19	1800	5.5	085	E 5-7	3838.8	230328

09/01/03	1245	27-20.98	85-04.65	1800	5.5	085	E 5-7	3886.4	233184
09/01/03	1300	27-20.97	85-03.10	1800	5.4	085	E 5-7	3948	236880
09/01/03	1315	27-20.97	85-01.56	1800	5.1	085	E 5-10	3894.8	233688
09/01/03	1330	27-21.00	85-00.15	1800	5.1	085	E 10-15	3908.8	234528
09/01/03	1345	27-21.04	85-58.63	1500	5.4	085	E 10-15	3782.8	228968
09/01/03	1400	27-21.12	85-57.11	1500	5.2	085	E 10-15	3012.8	180768
09/01/03	1415	27-21.18	84-55.62	1200	5.4	085	E 5-10	3060.4	183624
09/01/03	1430	27-21.26	84-54.07	1200	5.4	085	E 5-10	3071.6	184296
09/01/03	1445	27-21.25	84-52.52	1200	5.4	085	E5-10	3430	205800
09/01/03	1500	27-21.24	84-51.02	1200	5.4	085	E 5-10	3497.2	209832
09/01/03	1515	27-21.69	84-49.90	1200	5.4	340	E5-10	3603.6	216216
09/01/03	1530	27-21.93	84-51.12	900	5.0	270	E 5-10	3628.8	217728
09/01/03	1545	27-21.93	84-52.54	1080	5.1	270	E 5-10	3894.8	233688
09/01/03	1600	27-21.85	84-53.95	1080	5.0	270	SE 10	3956.4	237384
09/01/03	1615	27-21.87	84-55.38	1200	5.1	270	SE 10	2996	179760
09/01/03	1630	27-21.87	84-56.80	1200	5.1	270	SE 10	2898	173880
09/01/03	1645	27-21.87	84-58.25	1500	5.2	270	SE 10	3329.2	199752
09/01/03	1700	27-21.90	84-59.73	1500	5.3	270	SE 10	3494.4	209664
09/01/03	1715	27-21.93	85-01.23	1700	5.3	270	SE 10	3570	214200
09/01/03	1730	27-21.92	85-02.70	1800	5.3	270	SE 10	3659.6	219576
09/01/03	1745	27-21.87	85-04.22	1800	5.5	270	SE 10	3704.4	222264
09/01/03	1800	27-21.85	85-05.78	2100	5.6	270	SE 10	3416	204960
09/01/03	1815	27-21.89	85-07.36	2400	5.6	270	SE 10	3914.4	234864
09/01/03	1830	27-21.93	85-08.90	2400	5.5	270	SE 10	4026.4	241584
09/01/03	1845	27-21.94	85-10.47	2700	5.6	270	SE 10	3782.8	226968
09/01/03	1900	27-21.87	85-12.04	2880	5.6	270	SE 10	3738	224280
09/01/03	1915	27-21.84	85-13.60	2880	5.7	270	SE 10	3696	221760
09/01/03	1930	27-21.80	85-15.23	2980	5.9	270	SE 10	3746.4	224784
09/01/03	1945	27-21.82	85-16.87	3150	5.9	270	SE10	3810.8	228648
09/01/03	2000	27-21.88	85-18.55	4800	5.9	270	SE10	3886.4	233184
09/01/03	2015	27-21.94	85-20.22	4850	6.0	270	SE10	3928.4	235704
09/01/03	2030	27-21.85	85-21.84	4850	5.6	270	SE10	4029.2	241752
09/01/03	2045	27-21.73	85-23.40	4300	5.6	270	SE10	3914.4	234864
09/01/03	2100	27-21.69	85-24.97	6000	5.7	270	SE10	3878	232680
09/01/03	2115	27-21.64	85-26.54	6040	5.5	270	SE10	3920	235200
09/01/03	2130	27-21.57	85-28.08	10200	5.5	270	SE10	3970.4	238224
09/01/03	2145	27-21.60	85-29.68	10680	5.5	270	SE10	3956.4	237384
09/01/03	2200	27-21.63	85-31.15	10680	5.5	270	ESE10/15	3978.8	238728
09/01/03	2215	27-21.69	85-32.67	10680	5.3	270	ESE10/15	3668	220080
09/01/03	2230	27-21.71	85-34.15	10680	5.5	270	ESE10/15	3606.4	216384
09/01/03	2245	27-22.57	85-33.69	10680	5.9	085	ESE10/15	3374	202440
09/01/03	2300	27-22.73	85-32.03	10680	5.5	085	ESE10/15	3360	201600
09/01/03	2315	27-22.86	85-30.48	9000	5.6	085	ESE10/15	3430	205800
09/01/03	2330	27-22.98	85-28.95	9000	5.3	085	ESE10/15	3614.8	216888
09/01/03	2345	27-23.00	85-27.49	9000	5.1	085	ESE10/15	3808	228480
09/01/03	2400	27-23.03	85-25.95	4200	5.2	085	ESE10/15	3819.2	229152
09/02/03	0015	27-23.11	85-24.55	4200	5.2	085	ESE10/15	3813.6	228816
09/02/03	0030	27-23.22	85-23.06	4200	5.2	085	ESE10/15	3883.6	233016
09/02/03	0045	27-23.35	85-21.70	3000	5.2	085	ESE10/15	3939.6	236376
09/02/03	0100	27-23.49	85-20.30	3000	5.2	085	ESE10/15	3950.8	237048
09/02/03	0115	27-23.74	85-18.93	3120	4.7	085	ESE10/15	3892	233520
09/02/03	0130	27-23.84	85-17.48	3000	5.2	085	ESE10/15	3906	234360
09/02/03	0145	27-23.93	85-16.10	3000	5.2	085	ESE10/15	3390.8	203448
09/02/03	0200	27-23.99	85-14.63	3000	5.2	085	ESE10/15	795.2	47712
09/02/03	0215	27-24.08	85-13.16	3000	5.2	085	ESE10/15	2830.8	169848
09/02/03	0230	27-24.19	85-11.66	3000	5.2	085	ESE10/15	2889.6	173376
09/02/03	0245	27-24.28	85-10.12	2100	5.2	085	ESE10/15	3948	236880

09/02/03	0300	27-24.34	85-08.60	2100	5.2	085	ESE10/15	3959.2	237552
09/02/03	0315	27-24.38	85-07.12	2100	5.4	085	ESE10/15	3628.8	217728
09/02/03	0330	27-24.51	85-05.59	1920	5.4	085	ESE10/15	3640	218400
09/02/03	0345	27-24.67	85-04.05	1920	5.5	085	ESE10/15	2506	150360
09/02/03	0400	27-24.80	85-02.54	1680	5.5	085	ESE10/15	2175.6	130536
09/02/03	0415	27-24.92	85-01.00	1500	5.4	085	ESE10/15	722.4	43344
09/02/03	0430	27-25.05	84-59.49	1500	5.4	085	ESE10/15	722.4	43344
09/02/03	0445	27-25.16	84-58.00	1200	5.1	085	ESE10/15	826	49560
09/02/03	0500	27-25.25	84-56.51	1200	5.3	085	ESE10/15	826	49560
09/02/03	0515	27-25.37	84-55.14	1080	4.7	085	ESE10/15	823.2	49392
09/02/03	0530	27-25.51	84-53.83	1080	4.7	085	ESE10/15	820.4	49224
09/02/03	0545	27-25.68	84-52.48	900	5.0	085	ESE10/15	910	54600
09/02/03	0600	27-25.89	84-51.08	900	5.0	085	ESE10/15	896	53760
09/02/03	0615	27-26.06	84-49.71	900	5.0	085	ESE10/15	882	52920
09/02/03	0630	27-26.18	84-48.32	900	5.0	085	ESE10/15	814.8	48888
09/02/03	0630	FINISH CARGO							

av bbl gross 4896.68

av gal. gross 205660.41

Voyage	Date	Time	Lat.	Lon.	Depth (Fathoms)	Vessel Speed (Knots)	Course	Wind Speed Direction	Discharge Rate (GPM)	Comments	Discharge Rate (GPH)
12	09/07/03	0115	27-18.21	84-52.51	1080	5.1	270	NW 5-10	0		
	09/07/03	0130	27-18.15	84-53.98	1080	5.0	270	NW 5-10	2982		178920
	09/07/03	0145	27-18.09	84-55.43	1200	5.0	270	NW 5-10	3152.8		189168
	09/07/03	0200	27-18.11	84-56.92	1320	4.9	270	NW 5-10	3161.2		189672
	09/07/03	0215	27-18.08	84-58.38	1500	5.0	270	NW 5-10	3642.8		218568
	09/07/03	0230	27-18.05	84-59.82	1620	5.1	270	NW 5-10	3704.4		222264
	09/07/03	0245	27-18.03	85-01.53	1740	5.1	270	NW 5-10	3368.4		202104
	09/07/03	0300	27-18.01	85-02.41	1800	5.2	270	NW 5-10	2744		164640
	09/07/03	0315	27-18.00	85-03.89	2100	5.1	270	NW 5-10	3981.6		238896
	09/07/03	0330	27-17.99	85-05.62	2340	5.0	270	NW 5-10	3990		239400
	09/07/03	0345	27-18.98	85-07.37	2520	5.0	270	NW 5-10	3970.4		238224
	09/07/03	0400	27-17.96	85-08.09	2800	5.0	270	NW 5-10	3948		238880
	09/07/03	0415	27-17.43	85-09.48	2850	4.9	270	NW 5-10	3329.2		199752
	09/07/03	0430	27-17.96	85-10.87	2880	4.9	270	NW 5-10	3276		198560
	09/07/03	0445	27-17.97	85-12.25	3000	4.8	270	NW 5-10	3752		225120
	09/07/03	0500	27-17.99	85-13.61	3000	4.8	270	NW 5-10	4018		241080
	09/07/03	0515	27-17.97	85-14.92	3600	4.7	270	NW 5-10	3976		238560
	09/07/03	0530	27-17.97	85-16.27	3600	4.7	270	W-5	3984.4		239064
	09/07/03	0545	27-17.93	85-17.50	4200	4.5	270	W-5	3841.6		230496
	09/07/03	0600	27-17.88	85-18.78	4200	4.4	270	W-5	3808		228480
	09/07/03	0615	27-17.91	85-20.00	4200	4.4	270	W-5	3830.4		229824
	09/07/03	0630	27-17.90	85-21.24	4800	4.5	270	W-5	3847.2		230832
	09/07/03	0645	27-17.88	85-22.47	4800	4.4	270	W-5	3645.6		218736
	09/07/03	0700	27-17.81	85-23.72	5000	4.5	270	W-5	3343.2		200592
	09/07/03	0715	27-17.72	85-24.97	5400	4.4	270	W-5	3382.4		202944
	09/07/03	0730	27-17.65	85-26.19	6000	4.4	270	W-5	3418.8		205128
	09/07/03	0745	27-17.64	85-27.42	10668	4.4	270	W-5	3312.4		198744
	09/07/03	0800	27-17.64	85-28.62	10668	4.3	270	W-5	3365.6		201936
	09/07/03	0815	27-17.65	85-29.80	10620	4.2	270	W-5	3418.8		205128
	09/07/03	0830	27-17.64	85-30.96	10620	4.1	270	W-5	3511.2		210672
	09/07/03	0845	27-17.60	85-32.08	10620	4.1	270	W-5	3788.4		227304
	09/07/03	0900	27-17.47	85-33.25	10600	4.2	270	W-5	3866.8		232008
	09/07/03	0915	27-17.43	85-34.44	10600	4.2	270	W-5	3869.6		232176
	09/07/03	0930	27-17.49	85-35.64	10680	4.5	270	W-5	3892		233520
	09/07/03	0945	27-17.50	85-36.82	10680	4.4	270	W-5	3928.4		235704
	09/07/03	1000	27-17.51	85-38.16	10680	4.4	270	W-5	3945.2		236712
	09/07/03	1015	27-17.52	85-39.41	10710	4.5	270	W-5	3796.8		227808

09/07/03	1030	27-17.54	85-40.73	10710	4.5	270	W-5	3757.6	225456
09/07/03	1045	27-17.49	85-41.91	10710	4.5	270	W-5	3984.4	239064
09/07/03	1100	27-17.50	85-43.16	10710	4.4	270	W-5	3995.6	239736
09/07/03	1115	27-18.01	85-44.04	10710	5.3	085	W-5	3992.8	239568
09/07/03	1130	27-17.91	85.42.36	10710	5.2	085	W-5	3976	238560
09/07/03	1145	27-17.90	85-40.27	10710	6.7	085	W-5	3726.8	223608
09/07/03	1200	27-17.87	85-38.51	10710	6.1	085	W-5	3738	224280
09/07/03	1215	27-18.00	85-36.78	10710	6.1	085	W-5	3676.4	220584
09/07/03	1230	27-18.16	85-35.02	10680	6.2	085	W-5	3684.8	221088
09/07/03	1245	27-18.30	85-33.24	10680	6.2	085	W-5	3682	220920
09/07/03	1300	27-18.46	85-31.52	10680	6.2	085	W-5	3684.8	221088
09/07/03	1315	27-18.61	85-29.81	10680	6.2	085	W-5	3785.6	227136
09/07/03	1330	27-18.77	85-28.18	5400	5.7	085	W-5	3992.8	239568
09/07/03	1345	27-18.98	85-26.55	5400	5.7	085	W-5	3726.8	223608
09/07/03	1400	27-21.11	85-25.01	5400	5.8	085	W-5	3715.6	222936
09/07/03	1415	27-19.20	85-28.38	5400	5.7	085	W-5	3808	228480
09/07/03	1430	27-19.31	85-21.85	4998	5.6	085	W-5	3819.2	229152
09/07/03	1445	27-19.40	85-20.27	4998	5.6	085	W 8-10	3729.6	223776
09/07/03	1500	27-19.52	85-18.73	3600	5.6	085	W 8-10	3696	221760
09/07/03	1515	27-19.63	85-17.17	3600	5.6	085	W 8-10	3864	231840
09/07/03	1530	27-19.71	85-15.60	3600	5.6	085	W 8-10	3878	232680
09/07/03	1545	27-19.81	85-14.05	3000	5.6	085	W 8-10	3651.2	219072
09/07/03	1600	27-19.89	85-12.45	2880	5.6	085	W 8-10	3626	217560
09/07/03	1615	27-20.04	85-10.92	2800	5.5	085	W 8-10	3536.4	212184
09/07/03	1630	27-20.21	85-09.40	2520	5.5	085	W 8-10	3502.8	210168
09/07/03	1645	27-20.35	85-07.88	2800	5.5	085	W 8-10	3900.4	234024
09/07/03	1700	27-20.48	85-06.34	2800	5.5	085	W 5-8	3931.2	235872
09/07/03	1715	27-20.60	85-04.81	2200	5.5	085	W 5-8	3740.8	224448
09/07/03	1730	27-20.70	85-03.29	1800	5.4	085	W 5-8	3712.8	222768
09/07/03	1745	27-20.79	85-01.79	1800	5.3	085	W 5-8	3738	224280
09/07/03	1800	27-.20.87	85-00.31	1700	5.3	085	W 5-8	3757.6	225456
09/07/03	1815	27-21.01	84-58.66	1380	5.2	085	W 5-8	3791.2	227472
09/07/03	1830	27-21.14	84-57.37	1260	5.2	085	W 5-8	3805.2	228312
09/07/03	1845	27-21.27	84-55.93	1200	5.1	085	W 5-8	3656.8	219408
09/07/03	1900	27-21.36	84-54.50	1080	5.2	085	W 5-8	3640	218400
09/07/03	1915	27-21.31	84-53.03	1080	5.2	085	W 5-8	3623.2	217392
09/07/03	1930	27-21.31	84-51.56	900	5.2	085	W 5-8	3603.6	216216
09/07/03	1945	27-22.00	84-51.48	1086	4.5	270	W 5-8	3466.4	207984
09/07/03	2000	27-21.83	84-52.68	1074	4.4	270	W 5-8	3418.8	205128
09/07/03	2015	27-21.78	84-53.93	1074	4.6	270	W 5-8	2858.8	171528
09/07/03	2030	27-21.76	84-55.24	1074	4.6	270	W 5-8	2898	173880
09/07/03	2045	27-21.79	84-56.50	1320	4.5	270	W 5-8	3136	188160
09/07/03	2100	27-21.78	84-57.77	1380	4.6	270	W 5-8	3166.8	190008
09/07/03	2115	27-21.75	84-59.10	1400	4.6	270	W 5-8	3964.8	237888
09/07/03	2130	27-21.74	85-00.42	1650	4.6	270	W 5-8	3987.2	239232
09/07/03	2145	27-21.79	85-01.71	1675	4.6	270	W 5-8	3676.4	220584
09/07/03	2200	27-21.79	85-03.01	1962	4.7	270	W 5-8	3614.8	216888
09/07/03	2215	27-21.76	85-04.32	2090	4.6	270	W 5-8	3914.4	234864
09/07/03	2230	27-21.73	85-05.85	2400	4.6	270	W 5-8	3934	236040
09/07/03	2245	27-21.69	85-06.93	2838	4.6	270	W 5-8	3925.6	235536
09/07/03	2300	27-21.69	85-08.23	2838	4.7	270	W 5-8	3917.2	235032
09/07/03	2315	27-21.70	85-09.52	2838	4.6	270	W 5-8	3911.6	234696
09/07/03	2330	27-21.70	85-10.82	2838	4.6	270	W 5-8	3934	236040
09/07/03	2345	27-21.69	85-12.16	2838	4.8	270	Lt.	3256.4	195384
09/08/03	2400	27-21.72	85-13.50	2838	4.8	270	Lt.	3259.2	195552
09/08/03	0015	27-21.74	85-14.87	2838	5.0	270	Lt.	3964.8	237888
09/08/03	0030	27-21.77	85-16.23	3000	4.8	270	Lt.	3987.2	239232

09/08/03	0045	27-27.79	85-17.65	3000	4.9	270	Lt.	3973.2	238392	
09/08/03	0100	27-21.81	85-18.97	3000	5.0	270	Lt.	3956.4	237384	
09/08/03	0115	27-21.81	85-20.38	3600	5.0	270	Lt.	3939.6	236376	
09/08/03	0130	27-21.81	85-21.75	3600	5.0	270	Lt.	3889.2	233352	
09/08/03	0145	27-21.80	85-23.10	3600	4.7	270	Lt.	3497.2	209832	
09/08/03	0200	27-21.77	85-24.42	4200	4.5	270	Lt.	3460.8	207648	
09/08/03	0215	27-21.75	85-25.61	4200	5.0	270	Lt.	3393.6	203616	
09/08/03	0230	27-21.75	85-26.98	4200	5.0	270	Lt.	3231.2	193872	
09/08/03	0245	27-21.79	85-28.38	4200	5.1	270	Lt.	3477.6	208656	
09/08/03	0300	27-22.73	85-28.86	4200	6.2	085	Lt.	3808	228480	
09/08/03	0315	27-22.99	85-27.16	4200	5.8	085	Lt.	3581.2	214872	
09/08/03	0330	27-23.17	85-25.56	4200	5.8	085	Lt.	3589.6	215376	
09/08/03	0345	27-23.31	85-24.13	4200	4.3	085	Lt.	3589.6	215376	
09/08/03	0400	27-23.41	85-22.97	4200	4.1	085	Lt.	3584	215040	
09/08/03	0430	27-23.64	85-20.73	3600	4.0	085	Lt.	3698.8	221928	
09/08/03	0445	27-23.71	85-19.61	3600	4.0	085	Lt.	3651.2	219072	
09/08/03	0500	27-23.80	85-18.49	3000	4.0	085	Lt.	3623.2	217392	
09/08/03	0515	27-23.89	85-17.11	3000	5.7	085	Lt.	3687.6	221256	
09/08/03	0530	27-23.98	85-15.53	3000	5.8	085	Lt.	3710	222600	
09/08/03	0545	27-25.10	85-13.96	2700	5.5	085	Lt.	3799.6	227976	
09/08/03	0600	27-24.21	85-12.41	2700	5.6	085	Lt.	3830.4	229824	
09/08/03	0615	27-24.31	85-10.86	2460	5.6	085	Lt.	3696	221760	
09/08/03	0630	27-24.42	85-09.29	2400	5.5	085	Lt.	3656.8	219408	
09/08/03	0645	27-24.52	85-07.75	2100	5.5	085	Lt.	3640	218400	
09/08/03	0700	27-24.68	85-06.23	2100	5.5	085	Lt.	3623.2	217392	
09/08/03	0715	27-24.82	85-04.73	1800	5.5	085	Lt.	3472	208320	
09/08/03	0730	27-24.95	85-03.19	1680	5.5	085	Lt.	3505.6	210336	
09/08/03	0745	27-25.11	85-01.68	1250	5.4	085	Lt.	3584	215040	
09/08/03	0800	27-25.27	85-00.19	1300	5.4	085	Lt.	3640	218400	
09/08/03	0815	27-25.38	85-58.68	1086	5.4	085	Lt.	3648.4	218904	
09/08/03	0830	27-25.48	85-57.16	1086	5.4	085	Lt.	3575.6	214536	
09/08/03	0845	27-25.60	85-55.62	1086	5.6	085	Lt.	2805.6	168336	
09/08/03	0900	27-25.73	85-54.06	900	5.5	085	Lt.	3053.8	183228	
09/08/03	0900	FINISH DISCHARGE								

Voyage	Date	Time	Lat.	Lon.	Depth (Fathoms)	Vessel Speed (Knots)	Course	Wind Speed Direction	Discharge Rate (GPM)	Comments	Discharge Rate (GPH)
13	09/11/03	1130	27-17.43	84-50.66	780	5.8	270	NE-10	0		START
	09/11/03	1145	27-17.42	84-52.22	1500	5.2	270	NE-10	352.8		21168
	09/11/03	1200	27-17.44	84-53.51	1500	4.6	270	NE-10	1125.6		67536
	09/11/03	1215	27-17.40	84-55.00	1500	4.9	270	NE-10	3116.4		186984
	09/11/03	1230	27-17.44	84-56.23	1800	5.1	270	NE-10	3192		191520
	09/11/03	1245	27-17.48	84-57.61	1800	4.8	270	NE-10	3267.6		196056
	09/11/03	1300	27-17.46	84-58.47	1800	4.8	270	NE-10	3449.6		206976
	09/11/03	1315	27-17.49	85-00.35	1800	4.8	270	NE-10	3410.4		204624
	09/11/03	1330	27-17.53	85-01.74	1800	4.8	270	NE-10	3424.4		205464
	09/11/03	1345	27-17.56	85-03.17	1800	5.3	270	NE-10	3416		204960
	09/11/03	1400	27-17.51	85-04.63	1800	5.3	270	NE-10	3421.6		205296
	09/11/03	1415	27-17.45	85-06.00	1800	5.1	270	NE-10	3463.6		207816
	09/11/03	1430	27-17.50	85-07.39	1800	5.1	270	NE-10	3536.4		212184
	09/11/03	1445	27-17.50	85-08.04	3600	5.2	270	NE-10	3721.2		223272
	09/11/03	1500	27-17.51	85-10.30	3600	5.3	270	NE-10	3841.6		230496
	09/11/03	1515	27-17.53	85-11.78	3600	5.3	270	NE-10	3883.6		233016
	09/11/03	1530	27-17.55	85-13.15	3600	5.2	270	NE-10	3897.6		233856
	09/11/03	1545	27-17.56	85-14.72	3600	5.2	270	NE-10	3813.6		228816
	09/11/03	1600	27-17.56	85-16.17	3600	5.2	270	NE-10	3805.2		228312
	09/11/03	1615	27-17.57	85-17.67	4200	5.2	270	ENE-10	3346		200760

09/11/03	1630	27-17.58	85-19.17	4500	5.2	270	ENE-10	3262	195720
09/11/03	1645	27-17.58	85-20.62	4500	5.1	270	ENE-10	3939.6	236376
09/11/03	1700	27-17.57	85-22.06	4800	5.2	270	ENE-10	3970.4	238224
09/11/03	1715	27-17.62	85-23.45	5000	5.2	270	ENE-10	3962	237720
09/11/03	1730	27-17.67	85-24.97	5400	5.2	270	ENE-10	3934	236040
09/11/03	1745	27-17.71	85-26.42	6000	5.2	270	ENE-10	3939.6	236376
09/11/03	1800	27-17.67	85-27.82	9000	4.9	270	ENE-10	3894.8	233688
09/11/03	1815	27-17.65	85-29.20	9000	4.9	270	ENE-10	3648.4	218904
09/11/03	1830	27-17.61	85-30.51	10680	4.6	270	ENE-10	3676.4	220584
09/11/03	1845	27-17.60	85-31.68	10680	4.3	270	ENE-10	3768.8	226128
09/11/03	1900	27-17.60	85-32.91	10680	4.5	270	ENE-10	3948	236880
09/11/03	1915	27-17.57	85-34.21	10680	4.6	270.0	ENE-10	3920	235200
09/11/03	1930	27-17.56	85-35.48	10680	4.5	270.0	ENE-10	3836	230160
09/11/03	1945	27-17.58	85-36.74	10680	4.6	270.0	ENE-10	3088.4	185304
09/11/03	2000	27-17.50	85-38.03	10680	4.6	270.0	ENE-10	2973.6	178416
09/11/03	2015	27-17.59	85-39.35	10680	4.5	270.0	ENE-10	3550.4	213024
09/11/03	2030	27-17.62	85-40.61	10680	4.5	270.0	ENE-10	3612	216720
09/11/03	2045	27-18.03	85-41.64	10680	6.4	085	ENE-10	3670.8	220248
09/11/03	2100	27-18.56	85-40.16	10680	5.7	085	ENE-10	3710	222600
09/11/03	2115	27-18.16	85-38.61	10680	5.9	085	ENE-10	3945.2	236712
09/11/03	2130	27-18.17	85-36.93	10680	6.1	085	ENE-10	3967.6	238056
09/11/03	2145	27-18.30	85-35.21	10668	6.2	085	ENE-10	3959.2	237552
09/11/03	2200	27-18.38	85-33.45	10668	6.1	085	ENE-10	3942.4	236544
09/11/03	2215	27-18.47	85-31.75	10668	6.1	085	ENE-10	3752	225120
09/11/03	2230	27-18.57	85-30.03	10550	6.1	085	ENE-10	3690.4	221424
09/11/03	2245	27-18.70	85-28.30	6000	6.1	085	ENE-10	3726.8	223608
09/11/03	2300	27-18.80	85-26.59	4998	6.1	085	ENE-10	3824.8	229488
09/11/03	2315	27-18.90	85-24.87	4200	6.1	085	ENE-10	3614.8	216888
09/11/03	2330	27-19.04	85-23.14	4150	6.1	085	ENE-10	3628.8	217728
09/11/03	2345	27-19.19	85-21.45	4150	6.1	085	NE-10	3558.8	213528
09/11/03	2400	27-19.32	85-19.80	4800	6.1	085	NE-10	3502.8	210168
09/12/03	0015	27-19.47	85-18.18	4800	5.6	085	NE-10	3617.6	217056
09/12/03	0030	27-19.59	85-16.60	4800	5.6	085	NE-10	4914.8	294888
09/12/03	0045	27-19.71	85-15.05	4800	5.6	085	NE-10	3886.4	233184
09/12/03	0100	27-19.84	85-13.55	4800	5.6	085	NE-10	3897.6	233856
09/12/03	0115	27-19.98	85-12.05	3000	5.3	085	NE-5-7	3850	231000
09/12/03	0130	27-20.09	85-10.56	3000	5.3	085	NE-5-7	3784.6	227080
09/12/03	0145	27-20.20	85-09.08	3000	5.3	085	NE-5-7	3847.2	230832
09/12/03	0200	27-20.33	85-07.50	3000	5.3	085	NE-5-7	3855.6	231336
09/12/03	0215	27-20.47	85-06.07	3000	5.1	085	NE-5-7	3654	219240
09/12/03	0230	27-20.56	85-04.73	3000	5.2	085	NE 5-7	3634.4	218064
09/12/03	0245	27-20.64	85-03.28	1500	5.1	085	NE-5-7	3970.4	238224
09/12/03	0300	27-20.75	85-01.83	1200	5.1	085	NE 5-7	3981.6	238896
09/12/03	0315	27-20.88	85-00.41	1200	5.2	085	NE 5-7	3858.4	231504
09/12/03	0330	27-21.00	84-58.97	1200	5.1	085	NE 5-7	3788.4	227304
09/12/03	0345	27-21.05	84-57.53	1200	5.2	090	NE 5-7	3864	231840
09/12/03	0400	27-20.99	84-56.06	1200	5.2	030	NE 5-7	3897.6	233856
09/12/03	0415	27-20.98	84-54.57	1140	5.3	090	NE 5-7	3780	226800
09/12/03	0430	27-21.04	84-53.18	1140	4.7	090	NE 5-7	3712.8	222768
09/12/03	0445	27-21.05	84-51.89	900	4.6	090	NE 5-7	3696	221760
09/12/03	0500	27-21.06	84-50.60	900	4.6	090	NE 5-7	3670.8	220248
09/12/03	0515	27-21.63	84-50.05	900	4.1	320	NE 5-7	3808	228480
09/12/03	0530	27-21.65	84-51.43	900	5.2	270	NE 5-7	3872.4	232344
09/12/03	0545	27-21.66	84-52.83	900	5.1	270	NE 5-7	3444	206640
09/12/03	0600	27-21.71	84-54.29	1140	4.8	270	NE 5-7	3416	204960
09/12/03	0615	27-21.67	84-55.59	1140	4.3	270	NE 5-7	3939.6	236376
09/12/03	0630	27-21.72	84-56.76	1200	4.3	270	NE 5-7	3962	237720

09/12/03	0645	27-21.76	84-57.96	1320	4.5	270	NE 5-7	3917.2	235032
09/12/03	0700	27-21.76	84-59.45	1320	4.4	270	NE 5-7	3892	233520
09/12/03	0715	27-21.75	85-00.46	1680	4.5	270	NE 5-7	2637.6	158256
09/12/03	0730	27-21.74	85-01.73	2400	4.5	270	NE 5-7	2612.4	156744
09/12/03	0745	27-21.77	85-03.00	2450	4.5	270	NE 5-7	2951.2	177072
09/12/03	0800	27-21.83	85-04.31	2100	4.9	270	NE 5-7	3015.6	180936
09/12/03	0815	27-21.85	85-05.66	3000	4.7	270	NE 5-7	3970.4	238224
09/12/03	0830	27-21.87	85-06.93	3010	4.5	270	NE 5-7	3984.4	239064
09/12/03	0845	27-21.81	85-08.21	3000	4.5	270	NE 5-7	3978.8	238728
09/12/03	0900	27-21.76	85-09.48	2838	4.6	270	NE 5-7	3973.2	238392
09/12/03	0915	27-21.74	85-10.78	2838	4.5	270	NE 5-7	3766	225960
09/12/03	0930	27-21.75	85-12.06	2838	4.5	270	NE 5-7	3749.2	224952
09/12/03	0945	27-21.76	85-13.37	2838	4.7	270	NE 5-7	3858.4	231504
09/12/03	1000	27-21.75	85-14.64	2858	4.3	270	NE 5-7	3875.2	232512
09/12/03	1015	27-21.76	85-15.94	3129	4.9	270	NE 5-7	3323.6	199416
09/12/03	1030	27-21.74	85-17.31	3140	4.8	270	NE 5-7	3304	198240
09/12/03	1045	27-21.73	85-18.69	4500	4.7	270	NE 5/7	3808	228480
09/12/03	1100	27-21.74	85-19.97	4800	4.6	270	NE 5/7	3903.2	234192
09/12/03	1115	27-21.77	85-21.26	4998	4.6	270	NE 5/7	3869.6	232176
09/12/03	1130	27-21.84	85-22.54	4998	4.5	270	NE 5/7	3855.6	231336
09/12/03	1145	27-21.84	85-23.82	6000	4.6	270	NE 5/7	3662.4	219744
09/12/03	1200	27-21.84	85-25.11	6000	4.6	270	NE 5/7	3640	218400
09/12/03	1215	27-21.85	85-26.41	6000	4.6	270	NE 5/7	3600.8	216048
09/12/03	1230	27-21.83	85-27.79	6000	5.4	270	NE 5/7	3586.8	215208
09/12/03	1245	27-21.78	85-29.31	6000	5.3	270	NE 5/7	3752	225120
09/12/03	1300	27-21.75	85-30.82	6000	5.3	270	NE 5/7	3766	225960
09/12/03	1315	27-22.66	85-30.85	6000	5.8	085	NE 5/7	3816.4	228984
09/12/03	1330	27-22.89	85-29.13	6000	6.2	085	NE 5/7	3808	228480
09/12/03	1345	27-22.90	85-27.12	6000	6.2	085	NE 5/7	3852.8	231168
09/12/03	1400	27-22.96	85-25.27	3500	5.6	085	NE 5/7	3883.6	233016
09/12/03	1415	27-22.89	85-23.56	3500	5.4	085	NE 5/7	3729.6	223776
09/12/03	1430	27-23.41	85-22.68	3000	5.2	085	NE 5/7	3662.4	219744
09/12/03	1445	27-23.52	85-21.18	3000	5.2	085	NE 5/7	3572.8	214368
09/12/03	1500	27-23.65	85-19.62	3000	5.5	085	NE 5/7	3558.8	213528
09/12/03	1515	27-23.77	85-18.01	3000	5.8	085	NE 5/7	3304	198240
09/12/03	1530	27-13.89	85-16.41	3000	5.6	085	NE 5/7	2438.8	146328
09/12/03	1545	27-23.98	85-14.87	2700	5.6	085	NE 5/7	1153.6	69216
09/12/03	1600	27-24.09	85-13.28	2700	5.6	085	NE 5/7	1159.2	69552
09/12/03	1615	27-24.20	85-11.68	2580	5.0	085	NE 5/7	2214.8	132888
09/12/03	1630	27-24.33	85-10.50	2400	4.1	085	NE 5/7	2660	159600
09/12/03	1645	27-24.43	85-09.28	2400	4.5	085	NE 5/7	3584	215040
09/12/03	1700	27-24.52	85-08.05	2280	4.4	085	NE 5/7	3690.4	221424
09/12/03	1715	27-24.59	85-06.81	2100	4.3	085	NE 5/7	3637.2	218232
09/12/03	1730	27-24.64	85-05.62	2000	4.5	085	NE 5/7	3626	217560
09/12/03	1745	27-24.72	85-04.39	1800	4.4	085	NE 5/7	3584	215040
09/12/03	1800	27-24.82	85-03.14	1800	4.5	085	NE 5/7	3550.4	213024
09/12/03	1815	27-24.93	85-01.85	1620	4.7	085	NE 5/7	3802.4	228144
09/12/03	1830	27-25.03	85-00.57	1500	4.5	085	NE 5/7	3830.4	229824
09/12/03	1845	27-25.12	85-58.27	1320	4.8	085	NE 5/7	3836	230160
09/12/03	1900	27-25.21	84-57.93	1320	4.8	085	NE5/10	3816.4	228984
09/12/03	1915	27-25.36	84-56.42	1200	6.0	085	NE5/10	3861.2	231672
09/12/03	1930	27-25.51	84-54.79	1080	5.8	085	NE5/10	3838.8	230328
09/12/03	1945	27-25.71	84-52.70	1090	8.4	085	NE5/10	2489.2	149352
09/12/03	2000	27-25-97	84-50.40	1050	8.6	085	NE5/10	2248.4	134904
09/12/03	2000	FINISH DISCHARGE							

Voyage	Date	Time	Lat.	Lon.	Depth (Fathoms)	Vessel Speed (Knots)	Course	Wind Speed Direction	Discharge Rate (GPM)	Comments	Discharge Rate (GPH)
14	09/15/03	1945	27-17.48	84-51.91	780	4.5	270	CALM	0		
	09/15/03	2000	27-17.46	84-53.38	1362	5.0	270	CALM	3377		202624
	09/15/03	2015	27-17.54	84-54.54	1362	5.0	270	CALM	3102.4		186144
	09/15/03	2030	27-17.56	84-56.00	1800	4.8	270	NNW/5	3413.2		204792
	09/15/03	2045	27-17.54	84-57.29	1850	5.1	270	NNW/5	2226		133560
	09/15/03	2100	27-17.52	84-58.72	1920	5.1	270	NNW/5	2122.4		127344
	09/15/03	2115	27-17.54	85-00.16	1920	5.1	270	NNW/5	3376.8		202608
	09/15/03	2130	27-17.57	85-01.62	2400	5.2	270	NNW/5	3458		207480
	09/15/03	2145	27-17.64	85-02.58	2440	5.2	270	NNW/5	3354.4		201264
	09/15/03	2200	27-17.68	85-04.55	2900	5.2	270	NNW/5	3379.6		202776
	09/15/03	2215	27-17.61	85-05.94	2880	4.8	270	NNW/5	3500		210000
	09/15/03	2230	27-17.55	85-07.26	3312	4.9	270	NNW/5	3536.4		212184
	09/15/03	2245	27-17.54	85-08.60	3327	4.6	270	NNW/5	3578.4		214704
	09/15/03	2300	27-17.51	85-09.90	3357	4.7	270	NNW/5	3640		218400
	09/15/03	2315	27-17.44	85-11.21	3372	4.7	270	NNW/5	3645.6		218736
	09/15/03	2330	27-17.44	85-12.54	3500	4.8	270	NNW/5	3670.8		220248
	09/15/03	2345	27-17.48	85-13.89	3600	4.9	270	NW 5	3438.4		206304
	09/15/03	2400	27-17.53	85-15.86	3600	4.9	270	NE 5	3402		204120
	09/16/03	0015	27-17.57	85-16.61	3600	4.9	270	NE 5	3442.6		206556
	09/16/03	0030	27-17.61	85-17.96	4200	4.9	270	NE 5	3487.4		209244
	09/16/03	0045	27-17.59	85-19.30	4200	4.9	270	NE 5	3544.8		212688
	09/16/03	0100	27-17.52	85-20.62	4200	4.4	270	NE 5	3556		213360
	09/16/03	0115	27-17.46	85-21.63	4200	4.5	270	NE 5	3550.4		213024
	09/16/03	0130	27-17.48	85-22.71	5000	4.5	270	NE 5	3166.8		190008
	09/16/03	0145	27-17.45	85-24.46	5000	4.5	270	NE 5	3924.2		235452
	09/16/03	0200	27-17.49	85-25.76	6000	4.6	270	NE5-7	3952.2		237132
	09/16/03	0215	27-17.51	85-27.05	6000	4.6	270	NE5-7	3976		238560
	09/16/03	0230	27-17.52	85-28.38	9000	4.7	270	NE5-7	3981.6		238896
	09/16/03	0245	27-17.54	85-29.67	9000	4.5	270	NE5-7	3953.6		237216
	09/16/03	0300	27-17.57	85-30.99	9600	4.5	270	NE 10	3920		235200
	09/16/03	0315	27-17.54	85-32.31	9600	4.7	270	NE5-7	3838.8		230328
	09/16/03	0330	27-17.56	85-33.64	10680	4.7	270	NE5-7	3847.2		230832
	09/16/03	0345	27-17.54	85-34.95	10680	4.9	270	NE5-7	3670.8		220248
	09/16/03	0400	27-17.48	85-36.37	10680	4.9	270	NE5-7	3628.8		217728
	09/16/03	0415	27-17.46	85-37.78	10680	5.2	270	NE5-10	3679.2		220752
	09/16/03	0430	27-17.51	85-39.22	10680	5.2	270	NE-5/10	3740.8		224448
	09/16/03	0445	27-17.51	85-40.72	10680	5.3	270	NE-10	3662.4		219744
	09/16/03	0500	27-17.49	85-42.20	10680	5.3	270	NE-10	3642.8		218568
	09/16/03	0515	27-18.18	85-41.76	10680	6.0	090	NE-10	3668		220080
	09/16/03	0530	27-18.06	85-40.13	10680	5.6	090	NE-10	3718.4		223104
	09/16/03	0545	27-18.02	85-38.52	10680	5.6	085	NE-10	3763.2		225792
	09/16/03	0600	27-18.07	85-36.99	10680	5.6	085	NE-10	3813.6		228816
	09/16/03	0615	27-18.17	85-35.44	10680	5.6	085	NE-10	3777.2		226632
	09/16/03	0630	27-18.29	85-33.88	10680	5.6	085	NE-10	3701.6		222096
	09/16/03	0645	27-18.41	85-32.32	10680	5.6	085	NE-10	3936.8		236208
	09/16/03	0700	27-18.53	85-30.75	10200	5.6	085	NE-10	3973.2		238392
	09/16/03	0715	27-18.64	85-29.18	10200	5.7	085	NE-10/15	3922.8		235368
	09/16/03	0730	27-18.75	85-27.56	9000	5.8	085	NE-10/15	3914.4		234864
	09/16/03	0745	27-18.73	85-25.95	4998	5.8	085	NE-10/15	3962		237720
	09/16/03	0800	27-18.93	85-25.31	4650	5.9	085	NE-10/15	3978.8		238728
	09/16/03	0815	27-19.06	85-22.68	3750	5.8	085	NE-10/15	3936.8		236208
	09/16/03	0830	27-19.17	85-21.03	3120	5.9	085	NE-10/15	3903.2		234192
	09/16/03	0845	27-19.30	85-19.40	3060	5.8	085	NE-10/15	3869.6		232176
	09/16/03	0900	27-19.40	85-17.76	3000	5.9	085	NE-10/15	3889.2		233352

09/16/03	0915	27-19.56	85-15.57	3015	5.9	085	NE-10/15	3964.8	237888
09/16/03	0930	27-19.66	85-14.48	3030	6.2	085	NE-10/15	3990	239400
09/16/03	0945	27-19.83	85-12.85	3000	5.2	085	NE-10/15	3925.6	235536
09/16/03	1000	27-20.02	85-11.51	3015	5.2	085	NE-10/15	3892	233520
09/16/03	1015	27-20.18	85-09.83	3000	5.2	085	NE-10/15	3964.8	237888
09/16/03	1030	27-20.31	85-08.39	2400	5.1	085	NE-10/15	3987.2	239232
09/16/03	1045	27-20.44	85-06.97	2100	5.1	085	NE-10/15	3875.2	232512
09/16/03	1100	27-20.58	85-05.59	1800	4.9	085	NE-10/15	3838.8	230328
09/16/03	1115	27-20.69	85-04.19	1800	5.0	085	NE-10/15	3861.2	231672
09/16/03	1130	27-20.79	85-02.76	1800	5.2	085	NE-10/15	3880.8	232848
09/16/03	1145	27-20.92	85-01.31	1800	5.2	085	NE-10/15	3950.8	237048
09/16/03	1200	27-21.02	84-59.83	1200	5.0	085	NE-10/15	3967.6	238056
09/16/03	1215	27-21.19	84-58.37	1200	5.0	085	NE-10/15	3939.6	236376
09/16/03	1230	27-21.48	84-57.06	1200	4.8	270	NE-10/15	3925.6	235536
09/16/03	1245	27-21.92	84-57.97	1200	5.0	270	NE-10/15	3934	236040
09/16/03	1300	27-21.83	84-59.58	1500	5.3	270	NE-10/15	3948	236880
09/16/03	1315	27-21.74	85-01-09	1500	5.4	270	NE-10/15	3962	237720
09/16/03	1330	27-21.69	85-02.54	1800	5.2	270	NE-10/15	3936.8	236208
09/16/03	1345	27-21.69	85-04.07	1800	5.3	270	NE-10/15	3948	236880
09/16/03	1400	27-21.73	85-05.50	1800	5.4	270	NE-10/15	3908.8	234528
09/16/03	1415	27-21.75	85-07.03	2820	5.6	270	NE-10	3978.8	238728
09/16/03	1430	27-21.76	85-08.55	2820	5.4	270	NE-10	3990	239400
09/16/03	1445	27-21.75	85-10.01	2820	5.2	270	NE-10	3869.6	232176
09/16/03	1500	27-21.73	85-11.41	2820	4.6	270	NE-10	3850	231000
09/16/03	1515	27-21.73	85-12.67	2820	4.5	270	NE-10	3914.4	234864
09/16/03	1530	27-21.75	85-14.09	2820	5.0	270	NE-10	3934	236040
09/16/03	1545	27-21.80	85-15.48	3000	4.9	270	NE-10	3939.6	236376
09/16/03	1600	27-21.81	85-16.92	3200	5.1	270	NE-10	3956.4	237384
09/16/03	1615	27-21.82	85-18.33	3600	5.1	270	NE-10	3931.2	235872
09/16/03	1630	27-21.85	85-19.79	4200	5.2	270	NE-10	3914.4	234864
09/16/03	1645	27-21.84	85-21.11	4200	4.5	270	NE-10	3925.6	235536
09/16/03	1700	27-21.84	85-22.11	4800	4.6	270	NE-10	3920	235200
09/16/03	1715	27-21.77	85-23.67	5400	4.5	270	NE-10	3967.6	238056
09/16/03	1730	27-21.74	85-24.87	6000	4.3	270	NE-10	3987.2	239232
09/16/03	1745	27-21.73	85-26.11	6600	4.3	270	NE-10	3922.8	235368
09/16/03	1800	27-21.73	85-27.28	8400	4.2	270	NE-10	3810.8	228648
09/16/03	1815	27-21.72	85-28.42	9000	4.2	270	NE-10	3833.2	229992
09/16/03	1830	27-21.73	85-29.75	9600	4.9	270	NE-10	3894.8	233688
09/16/03	1845	27-21.75	85-31.16	10200	4.9	270	NE-10	3830.4	229824
09/16/03	1900	27-21.75	85-32.52	10600	4.9	270	NE-10	3768.8	226128
09/16/03	1915	27-21.76	85-33.87	10600	4.9	270	NE-10	3950.8	237048
09/16/03	1930	27-21.78	85-35.29	10600	5.0	270	NE-10	3987.2	239232
09/16/03	1945	27-21.79	85-36.70	10600	5.1	270	NE-10	3942.4	236544
09/16/03	2000	27-21.78	85-38.11	10620	5.2	270	NE-10	3906	234360
09/16/03	2015	27-21.75	85-39.60	10630	5.3	270	NE-10	3886.4	233184
09/16/03	2030	27-21.78	85-42.50	10690	5.3	270	NE-10	3855.6	231336
09/16/03	2045	27-21.70	85-42.47	10690	5.3	270	NE-10	3833.2	229992
09/16/03	2100	27-22.52	85-42.42	10690	6.2	085	NE-10	3794	227640
09/16/03	2115	27-22.43	85-40.57	10690	6.8	085	NE-10	3780	226800
09/16/03	2130	27-22.30	85-38.65	10690	6.8	085	NE-10	0	DOWN
09/16/03	2145	27-22.39	85-36.86	10680	5.8	085	NE-10	4539.4	272368
09/16/03	2200	27-22.52	85-35.18	10680	5.9	085	NE-10	3763.2	225792
09/16/03	2215	27-22.56	85-33.54	10680	6.0	085	NE-10	3777.2	226632
09/16/03	2230	27-22.65	85-32.81	10650	6.2	085	NE-10	3808	228480
09/16/03	2245	27-22.76	85-30.06	9860	6.3	085	NE-10	3889.2	233352
09/16/03	2300	27-22.88	85-28.32	7500	6.4	085	NE-10	3948	236880
09/16/03	2315	27-23.05	85-26.50	4250	6.4	085	NE-10	3791.2	227472

09/16/03	2330	27-23.17	85-24.52	4250	6.6	085	NE-10	3752		225120
09/16/03	2345	27-27.31	85-22.55	3000	6.6	085	NE-10	3634.4		218064
09/16/03	2400	27-23.41	85-20.82	3000	6.6	085	NE-10	3575.6		214536
09/17/03	0015	27-23.57	85-19.12	3000	6.6	085	NE-10	3950.8		237048
09/17/03	0030	27-23.75	85-17.29	3000	6.6	085	NE-10	3959.2		237552
09/17/03	0045	27-23.95	85-15.49	3000	6.6	085	NE-10	3613.8		216828
09/17/03	0100	27-24.12	85-12.06	2100	6.0	085	NE-10	3628.8		217728
09/17/03	0115	27-24.25	85-12.06	2100	6.0	085	NE-10	3922.8		235368
09/17/03	0130	27-24.38	85-10.25	2100	7.2	085	NE 10-15	3931.2		235872
09/17/03	0145	27-24.55	85-08.14	2100	7.5	085	NE 10-15	3976		238560
09/17/03	0200	27-24.71	85-05.98	2100	8.1	085	NE 10-15	3987.2		239232
09/17/03	0215	27-24.93	85-03.69	2100	8.5	085	NE 10-15	3939.6		236376
09/17/03	0230	085-25.15	85-01.36	2100	8.4	085	NE 10-15	3928.4		235704
09/17/03	0245	27-25.31	84-58.92	1200	9.0	085	NE10-12	3242.4		194544
09/17/03	0300	27-25.48	84-56.34	1200	9.0	085	NE10-12		FINISH	FINISH

Voyage	Date	Time	Lat.	Lon.	Depth (Fathoms)	Vessel Speed (Knots)	Course	Wind Speed Direction	Discharge Rate (GPM)	Comments	Discharge Rate (GPH)
15	09/20/03	0745	27 17.60	84 49.15	1050	8.0KT	270	NE 10			START
	09/20/03	0800	27 17.52	84 51.11	1100	5.2	270	NE 10	3822		229320
	09/20/03	0815	27 17.54	84 52.49	1102	4.2	270	NE 10	3864		231840
	09/20/03	0830	27 17.53	84 53.46	1120	4.5	270	NE 10	3897.6		233856
	09/20/03	0845	27 17.47	84 54.77	1190	4.5	270	NE 10	3922.8		235368
	09/20/03	0900	27 17.49	84 56.09	1230	4.8	270	NE 10	3945.2		236712
	09/20/03	0915	27 17.44	84 57.29	1362	4.3	270	NE 10	3869.6		232176
	09/20/03	0930	27 17.38	84 58.50	1413	4.5	270	NE 10	3894.8		233688
	09/20/03	0945	27 17.38	84 59.73	1580	4.5	270	NE 10	3956.4		237384
	09/20/03	1000	27 17.39	85 00.98	1740	4.5	270	NE 10	3976		238560
	09/20/03	1015	27 17.42	85 02.43	1800	4.5	270	NE 10	3945.2		236712
	09/20/03	1030	27 17.49	85 03.47	2098	4.7	270	NE 10	3917.2		235032
	09/20/03	1045	27 17.56	85 04.58	2308	4.7	270	NE 10	3928.4		235704
	09/20/03	1100	27 17.61	85 06.13	2400	5.0	270	NE 10	3945.2		236712
	09/20/03	1115	27 17.58	85 07.58	2415	4.7	270	NE 10	3931.2		235872
	09/20/03	1130	27 17.58	85 08.55	2778	4.5	270	NE 10	3914.4		234864
	09/20/03	1145	27-17.59	85-10.06	3600	4.8	270	NE 10	3967.6		238056
	09/20/03	1200	27-17.56	85-11.42	3600	4.9	270	NE 10	3970.4		238224
	09/20/03	1215	27-17.64	85-12.80	3600	5.1	270	NE 5-7	3766		225960
	09/20/03	1230	27-17.68	85-14.20	3600	4.9	270	NE 5-7	3452.4		207144
	09/20/03	1245	27-17.68	85-15.60	3600	4.9	270	NE 5-7	3578.4		214704
	09/20/03	1300	27-17.68	85-17.01	3600	5.0	270	NE 5-7	3732.4		223944
	09/20/03	1315	27-17.77	85-18.45	4800	5.1	270	NE 5-7	3813.6		228816
	09/20/03	1330	27-17.72	85-19.76	4800	5.1	270	NE 5-7	3880.8		232848
	09/20/03	1345	27-17.64	85-21.30	4800	5.2	270	NE 5-7	3995.6		239736
	09/20/03	1400	27-17.62	85-22.74	4800	5.2	270	NE 5-7	3998.4		239904
	09/20/03	1415	27-17.62	85-24.19	4800	5.2	270	NE 5-7	3995.6		239736
	09/20/03	1430	27-17.66	85-25.63	6000	5.2	270	NE 5-7	3987.2		239232
	09/20/03	1445	27-17.70	85-27.10	7200	5.1	270	NE 5-7	3981.6		238896
	09/20/03	1500	27-17.73	85-28.58	9000	5.2	270	NE 5-7	3964.8		237888
	09/20/03	1515	27-17.69	85-30.04	9000	5.2	270	NE 5-7	3942.4		236544
	09/20/03	1530	27-17.69	85-35.52	9000	5.0	270	NE 5-7	3903.2		234192
	09/20/03	1545	27-17.66	85-32.92	9000	5.0	270	NE 5-7	3911.6		234696
	09/20/03	1600	27-17.64	85-34.36	10680	5.0	270	NE 5-10	3945.2		236712
	09/20/03	1615	27-17.61	85-35.74	10680	4.9	270	NE 5-10	3973.2		238392
	09/20/03	1630	27-17.58	85-37.12	10680	5.0	270	NE 5-10	3984.4		239064
	09/20/03	1645	27-17.49	85-38.58	10680	5.5	270	NE 5-10	3970.4		238224
	09/20/03	1700	27-17.52	85-40.18	10680	5.8	270	NE 5-10	3948		236880
	09/20/03	1715	27-17.50	85-41.86	10680	5.7	270	NE 5-10	3973.2		238392

09/20/03	1730	27-17.48	85-43.45	10680	5.7	270	NE 5-10	3970.4	238224
09/20/03	1745	27-18.58	85-43.34	10680	7.3	270	NE 5-10	3981.6	238896
09/20/03	1800	27-18.66	85-41.55	10680	5.8	090	NE 5-10	3984.4	239064
09/20/03	1815	27-18.65	85-39.95	10680	5.9	090	NE 5-10	3967.6	238056
09/20/03	1830	27-18.63	85-38.23	10680	6.2	090	NE 5-10	3948	238880
09/20/03	1845	27-18.64	85-36.56	10600	5.9	090	NE 5-10	3953.6	237216
09/20/03	1900	27-18.63	85-34.89	10600	6.0	090	NE 5-10	3967.6	238056
09/20/03	1915	27-18.60	85-33.17	10600	6.2	090	NE 5-10	3962	237720
09/20/03	1930	27-18.62	85-31.41	10600	6.6	085	NE 5-10	3948	236880
09/20/03	1945	27 18.72	85 29.55	10668	6.6	085	NE 5-10	3962	237720
09/20/03	2000	27 16.76	85 27.67	8900	5.6	085	NE 5-10	3973.2	238392
09/20/03	2015	27 18.88	85 25.19	6000	6.6	085	NE 5-10	3942.4	236544
09/20/03	2030	27 18.99	85 24.06	5200	6.5	085	NE 5-10	3914.4	234864
09/20/03	2045	27 19.07	85 22.04	4800	6.5	085	NE 5-10	3925.6	235536
09/20/03	2100	27 19.20	85 20.43	4225	6.5	085	NE 5-10	3950.8	237048
09/20/03	2115	2719.31	85 18.58	3800	6.5	085	NE 5-10	3987.2	239232
09/20/03	2130	27 19.46	85 16.91	3200	6.3	085	NE 5-10	3959.2	237552
09/20/03	2145	27 19.56	85 15.58	3100	6.1	085	NE 5-10	3934	236040
09/20/03	2200	27 19.75	85 13.28	2838	6.2	085	NE 5-10	3953.6	237216
09/20/03	2215	27 19.84	85 11.63	2670	6.2	085	NE 5-10	3942.4	236544
09/20/03	2230	27 19.92	85 09.65	2500	6.2	085	NE 5-10	3925.6	235536
09/20/03	2245	27 20.06	85 08.15	2480	6.0	085	NE 5-10	3942.4	236544
09/20/03	2300	27 20.25	85 06.52	2280	5.8	085	NE 5-10	3967.6	238056
09/20/03	2315	27 20.46	85-04.54	1920	6.0	085	NE 5-10	3990	239400
09/20/03	2330	27 20.63	85-03.59	1800	5.9	085	NE 5-10	3967.6	238056
09/20/03	2345	27-20.79	85-01.59	1500	5.9	085	NE 5-10	3948	236880
09/21/03	0000	27-20.93	84-59.93	1200	5.9	085	NE 5-10	3950.8	237048
09/21/03	0015	27-21.05	84-58.29	1200	5.9	085	ESE 5-10	3970.4	238224
09/21/03	0030	27-21.14	84-56.67	1200	5.7	085	ESE 5-10	3970.4	238224
09/21/03	0045	27-21.22	84-55.05	1200	5.6	085	ESE 5-10	3945.2	236712
09/21/03	0100	27-21.25	85-53.51	900	5.6	085	ESE 5-10	3950.8	237048
09/21/03	0115	27-21.31	84-51.94	900	5.6	085	ESE 5-10	3964.8	237888
09/21/03	0130	27-21.76	84-50.99	900	4.8	270	ESE 5-10	3970.4	238224
09/21/03	0145	27-21.83	84-52.84	900	5.5	270	ESE 5-10	3948	236880
09/21/03	0200	27-21.81	84-53.92	1200	5.5	270	ESE 5-10	3950.8	237048
09/21/03	0215	27-21.77	84-55.50	1200	5.6	270	ESE 5-10	3967.6	238056
09/21/03	0230	27-21.81	84-57.06	1200	5.5	270	ESE 5-10	3987.2	239232
09/21/03	0245	27-21.87	84-58.56	1500	5.5	270	ESE 5-10	3917.2	235032
09/21/03	0300	27-21.92	85-00.09	1500	5.5	270	ESE 5-10	3928.4	235704
09/21/03	0315	27-21.97	85-01.60	1800	5.5	270	ESE 5-10	3920	235200
09/21/03	0330	27-21.94	85-03.12	1800	5.3	270	ESE 5-10	3922.8	235368
09/21/03	0345	27-21.00	85-04.59	2400	5.3	270	E 5-10	3925.6	235536
09/21/03	0400	27-21.86	85-06.08	2400	5.3	270	E 5-10	3914.4	234864
09/21/03	0415	27-21.81	85-07.56	2400	5.2	270	E 5-10	3917.2	235032
09/21/03	0430	27-21.81	85-09.03	2400	5.2	270	E 5-10	3928.4	235704
09/21/03	0445	27-21.81	85-10.51	2700	5.2	270	E 5-10	3973.2	238392
09/21/03	0500	27-21.82	85-11.95	2700	5.2	270	E 5-10	3981.6	238896
09/21/03	0515	27-21.86	85-13.42	2880	5.2	270	E 5-10	3981.6	238896
09/21/03	0530	27-21.88	85-14.89	3000	5.3	270	E 5-10	3976	238560
09/21/03	0545	27-21.93	85-16.36	3000	5.3	270	E 5-10	3978.8	238728
09/21/03	0600	27-21.94	85-17.83	3600	5.3	270	E 5-10	3967.6	238056
09/21/03	0615	27-21.92	85-19.35	4200	5.4	270	E 5-10	3925.6	235536
09/21/03	0630	27-21.90	85-20.84	4200	5.3	270	E 5-10	3897.6	233856
09/21/03	0645	27-21.88	85-22.34	4800	5.3	270	E 5-10	3911.6	234696
09/21/03	0700	27-21.87	85-23.81	5400	5.3	270	E 5-10	3934	236040
09/21/03	0715	27-21.88	85-25.29	6000	5.2	270	E 5-10	3925.6	235536
09/21/03	0730	27-21.84	85-26.73	9000	5.2	270	E 5-10	3920	235200

09/21/03	0745	27 21.83	85 28.21	9025	5.3	270	E 5-10	3967.6	238056
09/21/03	0800	27 21.86	85 29.69	9000	5.3	270	E 5-10	3987.2	239232
09/21/03	0815	27 22.95	85 29.51	9000	6.7	085	E15-18	3939.6	236376
09/21/03	0830	27 23.26	85 27.68	6050	5.7	085	E15-18	3906	234360
09/21/03	0845	27 23.42	85 26.53	4800	6.2	085	E15-18	3956.4	237384
09/21/03	0900	27 23.53	85 24.26	4200	6.5	085	E15-18	3984.4	239064
09/21/03	0915	27 23.66	85 22.64	3600	5.3	085	E15-18	3990	239400
09/21/03	0930	27 23.75	85 21.12	3400	5.4	085	E15-18	3970.4	238224
09/21/03	0945	27 23.81	85 19.63	3200	5.0	085	E15-18	3953.6	237216
09/21/03	1000	27 23.88	85 18.09	3000	5.4	085	E15-18	3981.6	238896
09/21/03	1015	27 23.91	85 16.85	2900	5.4	085	E15-18	3970.4	238224
09/21/03	1030	27 23.96	85 15.12	2810	5.5	085	E15-18	3939.6	236376
09/21/03	1045	27 24.04	85 13.95	2800	5.5	085	ESE10-15	3978.8	238728
09/21/03	1100	27 24.12	85 12.04	2700	5.8	085	ESE10-15	3950.8	237048
09/21/03	1115	27 24.20	85 10.40	2460	5.7	085	ESE10-15	3925.6	235536
09/21/03	1130	27 24.32	85 08.82	2340	5.7	085	ESE10-15	3872.4	232344
09/21/03	1145	27-24.42	85-07.25	2100	5.7	085	E-15-20	3861.2	231672
09/21/03	1200	27-17.52	85-11.41	2100	6.0	085	E 15-20	3892	233520
09/21/03	1215	27-24.53	85-05.69	1200	6.0	085	E 15-20	3693.2	221592
09/21/03	1230	27-24.75	85-02.26	1200	5.6	085	E15-18	3668	220080
09/21/03	1245	27-24.91	85-00.72	1200	5.6	085	E 15-20	3102.4	186144
09/21/03	1300	27-25.07	85-59.23	1200	6.2	085	E 15-20	3071.6	184296
09/21/03	1315	27-25.25	85-57.54	1200	6.5	085	E 15-20	3024	181440
09/21/03	1330	27-25.39	85-55.38	1140	7.0	085	E 15-20	2914.8	174888
09/21/03	1342	27-25.52	85-53.67	1140	8.0	085	E 15-20	2582.5	154955

FINISH

Voyage	Date	Time	Lat.	Lon.	Depth (Fathoms)	Vessel Speed (Knots)	Course	Wind Speed Direction	Discharge Rate (GPM)	Comments	Discharge Rate (GPH)
16	09/24/03	1715	27 17.48	84 49.96	900	8.0	270	SE 10			Start
	09/24/03	1730	27 17.48	84 51.77	1020	5.2	270	SE 10	3747.9		224876
	09/24/03	1745	27 17.51	84 53.20	1080	4.9	270	SE 10	3976		238560
	09/24/03	1800	27 17 50	84 54.59	1080	5.1	270	SE 10	3987.2		239232
	09/24/03	1815	27 17.49	84 56.19	1362	5.1	270	SE 10	3984.4		239064
	09/24/03	1830	27 17.47	84 57.45	1380	4.9	270	SE 10	3978.8		238728
	09/24/03	1845	27 17.44	84 58.85	1500	5.0	270	SE 10	3942.4		236544
	09/24/03	1900	27 17.44	85 00.26	1680	5.1	270	SE 10	3914.4		234864
	09/24/03	1915	27 17.46	85 01.75	1800	5.2	270	SE 10	3925.6		235536
	09/24/03	1930	27 17.49	85 03.16	1980	5.2	270	SE 10	3945.2		236712
	09/24/03	1945	27 17.52	85 04.54	2160	4.9	270	SE 10	3934		236040
	09/24/03	2000	27 17.54	85 06.06	2400	5.0	270	SE 10	3928.4		235704
	09/24/03	2015	27 17.52	85 07.44	2460	4.9	270	SE 10	3917.2		235032
	09/24/03	2030	27 17.49	85 08.80	2760	4.9	270	SE 10	3942.4		236544
	09/24/03	2045	27 17.45	85 10.09	2850	4.5	270	SE 10	3953.6		237216
	09/24/03	2100	27 17.40	85 11.36	3010	4.8	270	SE 10	3903.2		234192
	09/24/03	2115	27 17.38	85 12.76	3318	4.8	270	SE 10	3892		233520
	09/24/03	2130	27 17.34	84 14.10	3450	4.9	270	SE 10	3959.2		237552
	09/24/03	2145	27 17.33	85 15.49	3650	4.8	270	SE 10	3945.2		236712
	09/24/03	2200	27 17.34	85 16.81	3750	4.8	270	SE 10	3914.4		234864
	09/24/03	2215	27 17.35	85 18.10	4000	4.5	270	SE 10	3936.8		236208
	09/24/03	2230	27 17.35	85 19.34	4260	4.3	270	SE 10	3914.4		234864
	09/24/03	2245	27 17.34	85 20.61	4500	4.9	270	SE 10	3894.8		233688
	09/24/03	2300	27 17.35	85 22.01	4750	5.1	270	SE 10	3920		235200
	09/24/03	2315	27 17.36	85 23.44	4800	5.0	270	SE 10	3931.2		235872
	09/24/03	2330	27 17.38	85 24.32	4890	4.8	270	SE 10	3950.8		237048
	09/24/03	2345	27 17.44	85 26.17	6005	4.7	270	SE 10	3928.4		235704
	09/25/03	0000	27 17.47	85 27.44	10200	5.0	270	SE 10	3900.4		234024

09/25/03	0015	27 17.48	85 28.77	10200	5.0	270	SE 10	3942.4	236544
09/25/03	0030	27 17.49	85 30.03	10200	4.9	270	SE 10	3956.4	237384
09/25/03	0045	27 17 55	85 31.41	10680	4.8	270	SE 10	4448	266880
09/25/03	0100	27 17.53	85 32.77	10680	4.9	270	SE 10	3950.8	237048
09/25/03	0115	27 17.51	85 34.12	10680	4.9	270	SE 10	3962	237720
09/25/03	0130	27 17.56	85 34.71	10680	4.8	270	SE 10	3939.6	236376
09/25/03	0145	27 17.58	85 36.84	10680	5.0	270	SE 10	3992.8	239568
09/25/03	0200	27 17.57	85 38.28	10680	5.1	270	SE 10	3998.4	239904
09/25/03	0215	27 17.71	85 39.68	10680	4.9	270	SE 10	3978.8	238728
09/25/03	0230	27 17.51	85 41.04	10680	4.9	270	SE 10	3967.6	238056
09/25/03	0245	27 17.46	85 42.37	10680	4.8	270	SE 10	3998.4	239904
09/25/03	0300	27 17.31	85 43.73	10680	4.9	270	SE 10	3992.8	239568
09/25/03	0315	27 18.33	85 43.76	10680	7.2	085	SE 10	3953.6	237216
09/25/03	0330	27 18.26	85 41.66	10680	7.0	085	SE 10	3948	236880
09/25/03	0345	27 18.14	85 39.62	10680	7.6	085	SE 10	3956.4	237384
09/25/03	0400	27 18.45	85 37.50	10680	7.6	085	SE 10	3962	237720
09/25/03	0415	27 18.67	85 35.51	10680	6.8	085	SE 10-15	3950.8	237048
09/25/03	0430	27 18.83	85 33.64	10680	6.6	085	SE 10-15	3931.2	235872
09/25/03	0445	27 18.96	85 31.79	10680	6.5	085	SE 10-15	3950.8	237048
09/25/03	0500	27 19.05	85 29.98	10680	6.4	085	SE 10-15	3970.4	238224
09/25/03	0515	27 19.15	85 28.19	9000	6.4	085	SE 10-15	3964.8	237888
09/25/03	0530	27 19.24	85 26.41	7200	6.5	085	SE 10-15	3978.8	238728
09/25/03	0545	27 19.32	85 24.56	4998	6.5	085	SE 10-15	3973.2	238392
09/25/03	0600	27 19.38	85 22.73	4800	6.6	085	SE 10-15	3964.8	237888
09/25/03	0615	27 19.49	85 20.87	3450	6.7	085	SE 10-15	3967.6	238056
09/25/03	0630	27 19.59	85 19.00	3360	6.7	085	SE 10-15	3976	238560
09/25/03	0645	27 19.74	85 17.16	3318	6.5	085	SE 10-15	3970.4	238224
09/25/03	0700	27 19.87	85 15.37	3120	6.3	085	SE 10-15	3962	237720
09/25/03	0715	27 19.99	85 13.60	2880	6.2	085	SE 10-15	3967.6	238056
09/25/03	0730	27 20.12	85 11.88	2850	6.2	085	SE 10-15	3978.8	238728
09/25/03	0745	27 20.26	85 10.16	2808	6.1	085	SE 10-15	3970.4	238224
09/25/03	0800	27 20.41	85 08.46	2580	5.9	085	SE 10-15	3956.4	237384
09/25/03	0815	27 20.48	85 06.01	2388	5.9	085	SE 10-15	3945.2	236712
09/25/03	0830	27 20.52	85 05.17	2080	5.6	085	SE 10-15	3978.7	238726
09/25/03	0845	27 20.56	85 03.55	1890	5.6	085	SE 10-15	3967.6	238056
09/25/03	0900	27 20.61	85 02.01	1740	5.6	085	E - 10-15	3939.6	236376
09/25/03	0915	27 20.65	85 00.43	1590	5.7	085	E - 10-15	3953.6	237216
09/25/03	0930	27 20.70	84 58.82	1380	5.7	085	E - 10-15	3928.4	235704
09/25/03	0945	27 20.73	84 57.17	1362	5.6	085	E - 10-15	3914.4	234864
09/25/03	1000	27 20.77	84 55.55	1200	5.7	085	E - 10-15	3942.4	236544
09/25/03	1015	27 20.87	84 54.04	1080	5.6	085	E - 10-15	3959.2	237552
09/25/03	1030	27 20.97	84 52.51	900	5.6	085	E - 10-15	3925.6	235536
09/25/03	1045	27 21.06	84 50.86	840	5.6	085	E - 10-15	3906	234360
09/25/03	1100	27 21.84	84 49.92	786	4.9	270	E - 10-15	3956.4	237384
09/25/03	1115	27 22.07	84 51.01	880	4.7	270	E - 10-15	3841.6	230496
09/25/03	1130	27 21.92	84 52.35	900	4.6	270	E - 10-15	4802.4	288144
09/25/03	1145	27 21.81	84 53.61	1020	4.6	270	E - 10-15	3908.8	234528
09/25/03	1200	27 21.82	84 54.91	1020	4.6	270	E 10	3939.6	236376
09/25/03	1215	27 21.82	84 56.24	1200	4.7	270	E 10	3948	236880
09/25/03	1230	27 21.84	84 57.54	1200	4.7	270	E 10	3903.2	234192
09/25/03	1245	27 21.81	84 58.81	1200	4.7	270	E 10	3892	233520
09/25/03	1300	27 21.78	85 00.09	1800	4.7	270	E 10	3956.4	237384
09/25/03	1315	27 21.75	85 01.33	1800	4.7	270	E 10	3939.6	236376
09/25/03	1330	27 21.74	85 02.61	1800	4.7	270	E 10	3906	234360
09/25/03	1345	27 21.82	85 03.87	1800	4.7	270	E 10	3799.6	227976
09/25/03	1400	27 21.71	85 05.11	2400	5.0	270	E 10	3822	229320
09/25/03	1415	27 12.68	85 06.04	2400	5.0	270	E 10	3914.4	234864

09/25/03	1430	27 21.64	85 07.88	2400	5.0	270	E 10	3925.6	235536
09/25/03	1445	27 21.63	85 09.25	2700	4.8	270	E 10	3922.8	235368
09/25/03	1500	27 21.66	85 10.05	2820	4.8	270	E 10-12	3928.4	235704
09/25/03	1515	27 21.69	85 11.95	2820	5.1	270	E 10-15	3964.8	237888
09/25/03	1530	27 21.74	85 13.21	2820	5.0	270	E 10-15	3992.8	238568
09/25/03	1545	27 21.77	85 14.71	2838	5.0	270	E 10-15	3984.4	239064
09/25/03	1600	27 21.83	85 16.03	3000	4.9	270	NW 15	3967.6	238056
09/25/03	1615	27 21.88	85 17.41	3300	5.0	270	NW 15	3973.2	238392
09/25/03	1630	27 21.93	85 18.83	3600	5.1	270	NW 10 - 15	3978.8	238728
09/25/03	1645	27 22.01	85 20.27	3900	5.2	270	NW 10 - 15	3981.6	238896
09/25/03	1700	27 20.04	85 21.76	3966	5.7	270	NE 10 - 15	3970.4	238224
09/25/03	1715	27 22.09	85 23.37	4800	5.7	270	NE 10 - 15	3976	238560
09/25/03	1730	27 22.13	85 24.96	4998	5.8	270	NE 10 - 15	3959.2	237552
09/25/03	1745	27 22.16	85 26.57	7200	5.7	270	E 10-15	3981.6	238896
09/25/03	1800	27 22.17	85 28.23	9000	5.7	270	E 10-15	3959.2	237552
09/25/03	1815	27 22.17	85 29.78	9126	6.0	290	NE 10 - 15	3964.8	237888
09/25/03	1830	27 23.32	85 29.24	9000	7.4	085	NE 10 - 15	3978.8	238728
09/25/03	1845	27 23.53	85 27.13	6000	7.6	085	NE 10 - 15	3936.8	236208
09/25/03	1900	27 23.76	85 25.03	4200	7.5	085	NE 10 - 15	3908.8	234528
09/25/03	1915	27 23.98	85 23.00	3900	7.4	085	NE 10 - 15	3936.8	236208
09/25/03	1930	27 24.19	85 20.93	3600	7.5	085	NE 10 - 15	3962	237720
09/25/03	1945	27 24.39	85 18.82	3156	7.5	085	NE 10 - 15	3953.6	237216
09/25/03	2000	27 24.97	85 16.66	2940	7.7	085	NE 10 - 15	3936.8	236208
09/25/03	2015	27 24.75	85 15.40	2820	7.7	085	NE 10 - 15	3892	233520
09/25/03	2030	27 24.92	85 12.28	2700	7.8	085	NE 10 - 15	3858.4	231504
09/25/03	2045	27 25.07	85 10.16	2400	7.8	085	NE 10 - 15	3875.2	232512
09/25/03	2100	27 25.19	85 08.13	2100	7.7	085	NE 10 - 15	3920	235200
09/25/03	2115	27 29.29	85 05.80	1920	7.7	085	NE 10 - 15	3911.6	234696
09/25/03	2130	27 25.31	85 03.65	1560	7.8	085	NE 10 - 15	3942.4	236544
09/25/03	2145	27 25.44	85 01.46	1490	7.6	085	NE 10 - 15	3889.2	233352
09/25/03	2200	27 25.47	84 59.34	1350	7.6	085	NE 10 - 15	3864	231840
09/25/03	2215	27 25.47	84 57.12	1225	7.5	085	NE 10 - 15	3682	220920
09/25/03	2230	27 25.57	84 55.29	1080	6.2	085	NE 10 - 15	3606.4	216384
09/25/03	2245	27 25.65	84 53.56	900	6.2	085	NE 10 - 15	2794.4	167664
09/25/03	2300	27 25.88	84 51.90	890	5.5	085	NE 10 - 15	2002	120120
09/25/03	2315	27 25.65	84 50.39	880	5.3	085	NE 10 - 15	140	8400

FINISH

Special Condition 19 E

Volume Discharged

Voyage	Volume (Gallons)
11	6,911,853
12	6,912,200
13	6,895,684
14	6,895,082
15	6,942,704
16	6,922,424

Special Condition 19 G

Wave Height @ Beginning and End of Each Trip

Voyage	Wave Height @ Beginning, ft.	Wave Height @ End, ft.
11	3 to 4	3
12	2	2
13	2 to 3	2 to 3
14	2	4 to 6
15	2 to 3	4 to 5
16	1	2 TO 3

Special Condition 19 H

Time and Position of Floatable Matter

Voyage	Date	Time	Lat.	Lon.
11	None Noted			
12	None Noted			
13	None Noted			
14	None Noted			
15	None Noted			
16	None Noted			

Special Condition 19 I

Time and Position of Sea Turtle or Marine Mammal Sightings

Voyage	Date	Time	Lat.	Lon.	Comments	
11	None Noted					
12	Dolphin	9/7/03	18:40	27.35.10	83.07.31	5-10 dolphins appeared for several seconds, at random times and random locations around the tug, during a period of about 2 minutes. No direction or pumping rate changes were necessary.
	Black Fin Tuna	9/8/03	10:12	27.27.20	84.36.81	Appeared for several seconds, about 50 feet from starboard bow of barge. No directions or pumping rate changes were necessary.
13	None Noted					
14	None Noted					
15	None Noted					

16 None Noted

Special Condition 19 J

Unusual Occurrences

Voyage

- 11 09/01/03 06:18hrs, Computer problems with log. Subsequently able to retrieve log data.
- 12 Delay due to weather Tropical Storm Henri - 09/04/03 to 09/06/03-1036 Total delay 43.3hrs
- 13 Coast Guard performed an unannounced petroleum spill drill, deploying booms around the tug and barge. Coast Guard relayed no comments or concerns to Captain.

- 14 Delay: Hose problem, shut down discharge 2115- 2135 09/16/03
- 15 None Noted
- 16 The "push pad" on barge caused a small gash (2 feet long, 1 inch wide, at 19-foot level on starboard bow above the load line) in barge on return from dispersion area. It occurred during maneuvering operations in Tampa Bay, switching from towing to pushing mode. Repairs made at Port Manatee.