



U.S. Department  
of Homeland Security  
**United States  
Coast Guard**

**LOCAL NOTICE TO MARINERS**

**District: 9**

**Week: 15/08**

Issued by: Commander (dpw)  
Ninth Coast Guard District  
1240 East Ninth Street,  
Cleveland, OH 44199-2060  
Telephone: (216) 902-6074

Direct questions about this LNM to the above address.

\*District Nine Internet Address\* <http://www.uscg.mil/d9/uscgd9.html>

\*\* Navigation Information Service watchstander, 24 hours a day at (703) 313-5900 \*\* \*\*Internet Address\*\* <http://www.navcen.uscg.gov/>

Light List Reference: Commandant Publication P16502.7, VOL VII, 2007 Edition

Coast Pilot Reference: 2007 U.S. Coast Pilot 6 Great Lakes 35th Edition

Coast Pilot Corrections Reference download web page: <http://nauticalcharts.noaa.gov/nsd/cpdownload.htm>

The Local Notice to Mariners is available on the Internet at <http://www.navcen.uscg.gov/lnm/d9/default.htm>. You will also have links to other government agencies- web pages including the US Army Corps of Engineers and the National Ocean Service.

REPORT DISCREPANCIES IN AIDS TO NAVIGATION TO THE NEAREST COAST GUARD UNIT

The Ninth District and all Sector offices for their areas of responsibility issue a BROADCAST NOTICE TO MARINERS.

The following Broadcast Notice to Mariners have been incorporated into this week's Local Notice to Mariners:

Sector Buffalo, NY - B008-08 through B013-08

Ninth District - C028-08 through C036-08

Sector Detroit, MI - D020-08 through D029-08

Sector Lake Michigan, WI - M099-08 through M114-08

Sector Sault Ste Marie, MI - S039-08 through S061-08

**ABBREVIATIONS**

**A through I**

ACOE - Army Corps of Engineers  
ADRIFT - Buoy Adrift  
AICW - Atlantic Intracoastal Waterway  
B - Buoy  
BKW - Breakwater  
B - Refer to Light List  
BNM - Broadcast Notice to Mariner  
CG - Refer to Light List  
CHAN - Channel  
CGD - Coast Guard District  
CR - Refer to Light List  
C/O - Cut Off  
CONT - Contour  
CONSTR - Construction  
CRK - Creek  
CONST - Construction  
DBN - Daybeacon  
DBD/DAYBD - Dayboard  
DBN/DEST - Daybeacon Destroyed  
DBN IMCH - Daybeacon Improper Characteristic  
DISCON - Discontinued  
DMGD - Daybeacon Damaged  
EST - Established Aid  
EVAL - Evaluation  
EXT - Extinguished  
FL - Flashing  
FS - Fog Signal

**K through M**

KBG - Refer to Light List  
KBG-I - Refer to Light List  
KBR - Refer to Light List  
KBR-I - Refer to Light List  
KBW - Refer to Light List  
KGB - Refer to Light List  
KGB-I - Refer to Light List  
KGR - Refer to Light List  
KGR-I - Refer to Light List  
KGW - Refer to Light List  
KGW-I - Refer to Light List  
KRB - Refer to Light List  
KRB-I - Refer to Light List  
KRG - Refer to Light List  
KRG-I - Refer to Light List  
KRW - Refer to Light List  
KWB - Refer to Light List  
KWB-I - Refer to Light List  
KWG - Refer to Light List  
KWG-I - Refer to Light List  
KWR - Refer to Light List  
KWR-I - Refer to Light List  
LAT - Latitude  
LB - Lighted Buoy  
LBB - Lighted Bell Buoy  
LHB - Lighted Horn Buoy  
LGB - Lighted Gong Buoy  
LONG - Longitude

**N through Z**

NB - Refer to Light List  
N/C - Not Charted  
ND - Refer to Light List  
NG - Refer to Light List  
NGA - National Geospatial-Intelligence Agency  
NL - Refer to Light List  
NO - Number  
NOS - National Ocean Service  
NR - Refer to Light List  
NW - Refer to Light List  
NW - Notice Writer  
NY - Refer to Light List  
OBSCU - Obscured  
OBST - Obstruction  
OFF STA - Off Station  
OBSTR - Obstruction  
PRIV - Private Aid  
RBN - Radio Beacon  
REBUILT - Aid Rebuilt  
RECOVERED - Aid Recovered  
RED - Red Buoy  
REDINT - Reduced Intensity  
RRL - Range Rear Light  
RELIGHTED - Aid Relighted  
RELOC - Relocated  
RESET ON STATION - Aid Reset on Station  
RFL - Range Front Light  
RIV - River

HAZ - Hazard to Navigation  
HBR - Harbor  
HOR - Horizontal Clearance  
HT - Height  
ICW - Intracoastal Waterway  
IMCH - Improper Characteristic  
INL - Inlet  
INOP - Not Operating  
INT - Intensity  
ISL - Islet

LNM - Local Notice to Mariners  
LT - Light  
LT CONT - Light Continuous  
LWB - Lighted Whistle Buoy  
LWP - Left Watching Properly  
MISS - Missing  
MR - Refer to Light List  
MR-I - Refer to Light List

SEC - Section  
SG - Green Square  
SG-SY - Green Square with Yellow Square  
SHL - Shoaling  
SND - Sound  
SS - Sound Signal  
TEMP - Temporary Aid Change  
TMK - Topmark  
St M - Statute Mile  
TR - Red Triangle  
TRLB - Temporarily Replaced by Lighted Buoy  
TRLT - Temporarily Replaced by Light  
TR-TY - Red Triangle with Yellow Triangle  
TRUB - Temporarily Replaced by Unlighted Buoy

Additional Abbreviations Specific to this LNM Edition:

DMGD - Damaged  
MSLD SIG - Misleading Signal  
REDUCED INT DAY - Burning During the Day  
SS - Sound Signal

---

---

## SECTION I - SPECIAL NOTICES

This section contains information of special concern to the Mariner.

---

### USACOE NOTICE TO NAVIGATION INTERESTS

All recent Federal Channels conditions that have conditional surveys can be found can be seen at the USACE Detroit District web site at: <http://www.lre.usace.army.mil/who/operationsofficehomepage/latestnotices/index.cfm?> and <http://www.lre.usace.army.mil/who/operationsofficehomepage/noticetonavigationinterest/>, the USACE Chicago District website at: [http://www.lrc.usace.army.mil/co%2Do/Nav\\_Notice.htm](http://www.lrc.usace.army.mil/co%2Do/Nav_Notice.htm), and the USACE Buffalo District website at: <http://www.lrb.usace.army.mil/>

LNM: 11/07

### ST LAWRENCE SEAWAY - NAVIGATION NOTICES

All recent notices that have been created by the St Lawrence Seaway System can be found at the following web addresses: <http://www.greatlakes-seaway.com/en/seaway/index.html>

LNM: 13/07

### The Dates of Latest Editions, Nautical Charts and Miscellaneous Maps

The Dates of Latest Editions, Nautical Charts and Miscellaneous Maps, dated October 1, 2007, published by the National Ocean Service, is available for issue. It may be obtained for free by mail from the FAA/National Aeronautical Charting Office, Distribution Division AVN-530, 10201 Good Luck Road, Glenn Dale MD, 20769-9700, by telephone at 1-800-638-8972, or from your local authorized nautical chart sales agent. This is a quarterly publication listing the most recent editions of nautical charts, miscellaneous maps and publications relating to navigation, weather, etc. with brief descriptions and newly updated prices for most of the publications listed. Much of this information may also be obtained online at: <http://chartmaker.ncd.noaa.gov/mcd/dole.htm>

LNM: 43/07

### GREAT LAKES - Great Lakes Water Levels

The expected water levels on the Great Lakes for April 20, 2008. Connecting Channels and the St. Lawrence River, given in inches above (+) or below (-) Low Water Datum (LWD). LWD is a plane of reference used on a navigation chart. It is also known as chart Datum.

Great Lakes:

Lake Ontario +34, Lake Erie +34, Lake St. Clair +21, Lake Michigan-Huron -5, Lake Superior -7.

St Lawrence River:

Above Long Sault Dam +46, Above Iroquois Dam +36, Ogdensburg +40, Alexandria Bay +35, Head of River at Cape Vincent +34.

Detroit River:

Lake Erie at Pelee Passage +34, Mouth of River at Gibraltar +31, Head of River above Belle Isle +21

St. Clair River:

Mouth of River at St. Clair Flats +21, Algonac +15, St. Clair +6, Blue Water Bridge 0, Head of River at Fort Gratiot -5,

Lake Huron Approach Channel -5.

St. Marys River:

Mouth of River at Detour -5, West and Middle Neebish 0, Head of Little Rapids +2, U.S. Slip 0 Above Locks -4,

Head of River at Point Iroquois -7.

Available water depth is determined for a location by adding (if +) or subtracting (if -) the amount from the above to the water depth shown on National Oceanic and Atmospheric Administration (NOAA) navigational charts. Caution: Depths so determined are representative of a still water surface elevation, disturbed by neither wind nor other causes. Depth, however, may be reduced or increased as much as several feet for short periods of time due to these disturbances, or when sections of channels develop shoals. Vessel masters should refer to the Local Notice to Mariners for extent of shoaling and scattered bedrock projections in all channels. For further information direct inquires to: Department of the Army, Detroit District Corps of Engineers P. O. Box 1027, Detroit, MI 48231, (313) 226-6443. Additional information can be found on the U.S. Army Corps of Engineers Information Center website at <http://www.lre.usace.army.mil/greatlakes/hh/greatlakeswaterlevels/waterlevelforecasts/connectingchannelsforecasts/index.cfm?>.

LNM: 15/08

**NEW YORK STATE CANAL SYSTEM - NOTICE TO MARINERS - Champlain Canal - Chart 14786**

Mariners are advised that shoaling to 6.5' has been reported between red buoys 72 and 72A, just to the south of Lock C-4 on the Champlain Canal. This shoaling has been reported and confirmed at a time when flashboards adjacent to Lock C-3 were fully deflated for maintenance, decreasing water levels to "normal pool" but much lower than typical for this area. At normal pool elevation of 67.5', vessels exceeding a 6.5' draft should not transit this area.

Typical navigation season elevation for this level is 73.5' due to inflatable flashboards maintained for the purpose of hydropower generation by a private company. Therefore, depth usually encountered in this area will be approximately 6' deeper than reported above. With flashboards fully inflated on this level, controlling minimum depth is approximately 12.5'.

Mariners requiring a controlling depth of greater than 6.5' should call ahead to verify pool levels prior to transiting this area.

For updates and information on Canal conditions please call 1-800-4CANAL4 or visit [www.nyscanals.gov](http://www.nyscanals.gov).

LNM: 39/07

**NEW YORK STATE CANAL SYSTEM NOTICE TO MARINERS - Champlain Canal -Chart 14786**

Mariners are advised that a strong crosscurrent may affect vessel maneuverability immediately above Lock C-2 in Mechanicville. This crosscurrent is related to operations at an adjacent hydroelectric facility not under ownership or control of the Canal Corporation. Vessels should remain mid channel and stay well clear of cribbing clusters when transiting this area. Work has been completed at Lock E-28A in Lyons. The lock is open for navigation.

LNM: 32/07

**LAKE ONTARIO - Irondequoit Bay - Shoaling - Chart 14804**

Heavy shoaling has been reported in Irondequoit Bay near the Bay Entrance Channel.

LNM: 34/07

**LAKE ERIE - OH, Port Clinton - Rock Hazard - Chart 14846**

The Coast Guard has received a report of a rock in the water located 260 yards off shore in 3 feet of water at postion 41-31-24N 082-57-34.2W. Mariners are urged to use caution when transiting this area.

LNM: 43/07

**DETROIT RIVER - East Outer Channel - Chart 14848**

East Outer Lighted Buoy 16 (LLNR 6960) has been changed to a year round lighted buoy. Range of the light is 3 miles.

LNM: 52/07

**LAKE ST CLAIR - Chart 14850**

Lake St. Clair Lighted Buoy "7" (LLNR 8445) has been changed to a year round lighted buoy. Range of the light is 3 miles.

LNM: 52/07

**LAKE ST CLAIR - MI, St Clair Cut Off Channel - Chart 14850**

Severe Shoaling has been reported in the vicinity of Pier Lighted Buoy X32 (LLNR 8600). All mariners are advised to use caution while transiting the area.

LNM: 15/08

**LAKE ST CLAIR - St. Clair Cut-Off Channel - Severe Shoaling - Charts 14850, and 14853**

Severe shoaling has been confirmed inside the St. Clair cut-off channel in the vicinity of Pier Lighted Buoy X32 (LLNR 8600). See enclosure (4) for charted depth soundings.

LNM: 14/08

**LAKE HURON - Lake Huron Cut - Chart 14862**

Lake Huron Cut Lighted Buoy "1" (LLNR 10035) has been changed to a year round lighted buoy. Range of the light is 3 miles.

Lake Huron Cut Lighted Buoy "11" (LLNR 10085) has been changed to a year round lighted buoy. Range of the light is 3 miles.

LNM: 52/07

**LAKE HURON - Lexington Harbor, MI - Shoaling - Chart 14862**

Surveys performed during July 2007 indicate shoaling in the Federal navigation channel at Lexington Harbor, Michigan. The surveys are available on internet address: <http://www.lre.usace.army.mil/who/operationsofficehomepage/> Mariners are urged to use extreme caution in the area.

LNM: 31/07

**ILLINOIS WATER WAY - IL, Illinois River - Shoaling**

Shoaling has been reported near the left descending bank of the Illinois River at MM 200. All mariners use caution when transiting this area.

LNM: 47/07

**LAKE MICHIGAN - Bay of Green Bay - Ice Breaking**

Beginning on March 22nd 2008 the Coast Guard Cutter Mobile Bay will conduct ice breaking operations in the lower half of Green Bay including Fox River, the Port Of Green Bay, Sturgeon Bay Ship Canal, Little Bay De Noc, and the entrance channel to Marinette and Menominee. All ice fishermen should remove any ice shacks. All snowmobiles, ATV operators, and any other recreational ice users should avoid shipping channels, plan their activities carefully, and use caution near the ice. Further inquires can be made by phone to Soo Vessel Traffic Services at 906-635-3232.

LNM: 13/08

**LAKE MICHIGAN - Grand Traverse Bay - Aid Reduced Intensity - Chart 14913**

Grand Traverse Light (LLNR 18110) has a range reduced from 24 Miles to 18 Miles.

LNM: 42/07

**LAKE MICHIGAN - IN - Portage Burns Waterway**

Shoaling has been reported at the entrance to and within the channel of the Portage - Burns Waterway.

LNM: 15/08

**LAKE MICHIGAN - MI, Arcadia - Shoaling - Hazard to Navigation**

The Coast Guard has received a report of shoaling in the vicinity of Arcadia channel entrance. All mariners are urged to use caution when transiting the channel.

LNM: 43/07

**LAKE MICHIGAN - MI, Pentwater Harbor - Shoaling - Chart 14907**

Shoaling has been reported perpendicular to the entrance of Pentwater Harbor. All mariners use caution while transiting the area.

LNM: 29/07

**LAKE MICHIGAN - Muskegon - Unpublished Winter mark - Chart 14934**

A winter mark was placed in position of Muskegon Lake Lighted Buoy 3 (18750) 43-13-55.050N 086-18-04.217W. This winter mark is not published in the Great Lakes Light List. Mariners are urged to use caution while transiting this area.

LNM: 50/07

**LAKE MICHIGAN - New Buffalo Harbor Entrance, MI - Severe Shoaling - Chart 14905**

The Coast Guard has received a report of severe shoaling at the New Buffalo Harbor Entrance. All Mariners are urged to use caution when transiting the area.

LNM: 45/07

**LAKE MICHIGAN - Waugoshance Point to Seul Choix Point - Chart 14911**

White Shoal Light (LLNR 17750) The characteristic has been changed to Fl W 4s. The range of the light has been reduced from 17 to 11 miles. The fog signal will be secured for the winter navigation season.

LNM: 01/08

**LAKE MICHIGAN - Ludington Harbor - Shoaling - Chart 14937**

Shoaling has been reported in Ludington Harbor Channel, in view of Ludington South Pierhead Light 6 (LLNR 18560). Depths were reported as shallow as 14 feet along the south edge of the channel and 24 feet mid-channel.

LNM: 27/06

**LAKE MICHIGAN - Waukegan Harbor, IL - Shoaling - Chart 14904**

Shoaling has been reported in the Waukegan Harbor Channel. The shoaling protrudes approximately 200 feet into the channel from the north.

Available depths have been reduced to 10 feet southeast of the Waukegan North Breakwater.

LNM: 38/06

**LAKE MICHIGAN - Shoaling - Illinois Waterway - Calumet River - Chart 14929**

Shoaling has been reported in the vicinity of Acme Steel Been at Mile Marker 321 in the Calumet River. All mariners are to use caution when transiting this area.

LNM: 49/07

**LAKE MICHIGAN - MI, Holland Harbor - Shoaling - Chart 14932**

Shoaling has been reported in Holland Harbor. Depths of less than 16 feet were reported at the entrance to the channel.

LNM: 50/06

**ST MARYS RIVER - De Tour Passage to Munuscong Lake - Chart 14882**

Pipe Island Lighted Buoy "1" (LLNR 12865) has been changed to a year round lighted buoy.

LNM: 52/07

**ST MARYS RIVER - Head of Nicolet to Whitefish Bay - Chart 14884**

Pt. Iroquois Lighted Buoy 33 (LLNR 14465) has been changed to a year round lighted buoy. Range of the light is 3 miles.

Pt. Iroquois Lighted Buoy 39 (LLNR 14490) has been changed to a year round lighted buoy. Range of the light is 3 miles.

LNM: 52/07

**ST MARYS RIVER - Sault Ste Marie - Ice Fields - Chart 14884**

To keep adjacent ice fields intact, mariners transiting the St. Mary's River are asked to monitor the wake and displacement of their vessels to prevent incidental icebreaking. This is especially true in the West and Middle Neebish Channels, and in the vicinity of the ferries.

LNM: 50/07

**LAKE SUPERIOR - Chequamegon Bay - Temporary Aid Established - Chart 14974**

A temporary white styrofoam aid has been established to mark the end of underwater cabling in position 46-48.5N 090-47.9W.

LNM: 45/07

**LAKE SUPERIOR - Isle Royale - EMERGENCY RESTRICTIVE ORDER - Chart 14976**

Effective Tuesday September 18, 2007, the National Park Service instituted an Emergency Restrictive Order under 36 CFR 1.5(a)(2) prohibiting the discharge of untreated ballast water within Isle Royale National Park waters. This order affects vessels intending to transit within four and one half miles of the shore of Isle Royale and immediately surrounding islands, including Passage Island and Gull Islands. Please contact the National Park Service at 219-926-7561 Ext. 311 for more information.

LNM: 39/07

**LAKE SUPERIOR - MI, Marquette Harbor - Shoaling - Chart 14970**

Surveys performed during July 2007 indicate shoaling in the federal navigation channel at Marquette Harbor, MI. Mariners are urged to use extreme caution in the area. Questions regarding this notice may be directed to the Army Corps of Engineers Operation Office.

LNM: 32/07

**LAKE SUPERIOR - St Louis River - Shoaling - Chart 14975**

Shoaling has been reported near River buoys 58-61 (LLNR 16385, 16390, 16395, 16400) in the St Louis River. All mariners are recommend to use extreme caution when transiting this area as water depths are as low as 4 feet.

LNM: 19/07

**LAKE SUPERIOR - Duluth Harbor - Chart 14975**

Minnesota Channel (Eastern Section) Lighted Buoy "14" (LLNR 16235) will be temporarily relocated to position 46-43'11"N 092-09'38"W approximately 80 yards inside the channel to facilitate the Tar Coal cleanup Safety Zone until the summer of 2009.

LNM: 22/07

---

## SECTION II - DISCREPANCIES

This section lists all reported and corrected discrepancies related to Aids to Navigation in this edition. A discrepancy is a change in the status of an aid to navigation that differs from what is published or charted.

---

### DISCREPANCIES (FEDERAL AIDS)

LLNR	Aid Name	Status	Chart No.	BNM Ref.	LNM St	LNM End
<b>2315</b>	<b>Irondequoit Bay Light 8</b>	<b>LT EXT</b>	<b>14804</b>	<b>B012-08</b>	<b>15/08</b>	
6340	Maumee River Turning Basin Buoy 56	OFF STA	14847	D017-08	13/08	
6580	Monroe Harbor Buoy 3	OFF STA	14846	D010-08	08/08	
7380	Point Mouillee Access Channel Buoy 3	OFF STA	14854	D165-07	52/07	
8880	St Clair Shores Breakwater Daybeacon 1	SINKING	14853	D015-08	10/08	
8885	St Clair Shores Breakwater Light 2	SINKING	14853	D014-07	10/08	
10375	Sand Point Midchannel Buoy S	OFF STA	14863	D003-08	03/08	
10740	Saginaw Bay Channel Lighted Buoy 28	OFF STA	14867		14/08	
11405	Alpena Channel Buoy 3	OFF STA	14864	D018-08	13/08	
11410	Alpena Channel Buoy 4	OFF STA	14864	D019-08	13/08	
<b>12907</b>	<b>Lime Island Lighted Buoy 14</b>	<b>OFF STA</b>	<b>14882</b>	<b>S050-08</b>	<b>15/08</b>	
13525	West Neebish Channel (Downbound) Lighted Buoy 46	OFF STA	14883	S047-08	14/08	
13530	West Neebish Channel (Downbound) Light 45	LT EXT	14883	S043-08	14/08	
13565	West Neebish Channel (Downbound) Lighted Buoy 38	OFF STA	14883	S044-08	14/08	
13955	Upper Nicolet Range Front Light	DBN DEST	14883	S027-08	11/08	
<b>14265</b>	<b>Big Point Lighted Buoy 7</b>	<b>MISSING</b>	<b>14884</b>	<b>S058-08</b>	<b>15/08</b>	
<b>14450</b>	<b>Round Island Buoy 30</b>	<b>MISSING</b>	<b>14884</b>	<b>S059-08</b>	<b>15/08</b>	
<b>14730</b>	<b>Huron Island Light</b>	<b>LT EXT</b>	<b>14964</b>	<b>S057-08</b>	<b>15/08</b>	
14760	L'Anse Buoy 1	OFF STA	14964	S195-07	51/07	
16835	Passage Island Light	RAC INOP	14968	S199-07	52/07	
<b>17780</b>	<b>Grays Reef Passage Channel Lighted Buoy 7</b>	<b>MISSING</b>	<b>14911</b>	<b>S060-08</b>	<b>15/08</b>	
<b>18375</b>	<b>Frankfort North Breakwater Light</b>	<b>SS INOP</b>	<b>14939</b>		<b>15/08</b>	
<b>18415</b>	<b>Portage Lake North Pierhead Light</b>	<b>SS INOP</b>	<b>14939</b>		<b>15/08</b>	
<b>18530</b>	<b>Ludington North Breakwater Light</b>	<b>SS INOP</b>	<b>14937</b>		<b>15/08</b>	
<b>18620</b>	<b>Pentwater North Pierhead Light 3</b>	<b>SS INOP</b>	<b>14907</b>		<b>15/08</b>	
<b>18965</b>	<b>Grand Haven South Pierhead Entrance Light</b>	<b>SS INOP</b>	<b>14933</b>		<b>15/08</b>	
<b>19285</b>	<b>Holland Harbor South Breakwater Light</b>	<b>SS INOP</b>	<b>14932</b>		<b>15/08</b>	
<b>19515</b>	<b>St Joseph North Pierhead Light</b>	<b>SS INOP</b>	<b>14930</b>		<b>15/08</b>	
19525	St Joseph South Pierhead Light	REDUCED INT	14930	M095-08	13/08	
<b>19545</b>	<b>Michigan City East Pierhead Light</b>	<b>SS INOP</b>	<b>14905</b>		<b>15/08</b>	
21255	Cana Island Light	LT EXT	14909	M105-08	14/08	
21290	Rowley Bay Buoy 3	MISSING	14909	M027-08	05/08	
21295	Rowley Bay Buoy 4	OFF STA	14909	M028-08	05/08	
21305	Plum Island Range Front Light	REDUCED INT	14909	M023-08	04/08	
21335	Waverly Shoal Lighted Bell Buoy 5	MISSING	14909	M073-08	08/08	
21340	Detroit Island Passage Buoy 2	MISSING	14909	M073-08	08/08	
21345	Plum Island Lighted Buoy 1	OFF STA	14909	M034-08	06/08	
<b>21630</b>	<b>Little Bay De Noc Lighted Buoy 8</b>	<b>MISSING</b>	<b>14915</b>	<b>M106-08</b>	<b>15/08</b>	

**DISCREPANCIES (FEDERAL AIDS) CORRECTED**

LLNR	Aid Name	Status	Chart No.	BNM Ref.	LNM St	LNM End
5870	Port Clinton East Pierhead Light 1	WATCHING PROPERLY	14842	D027-08	14/08	15/08
7745	Fighting Island Channel Buoy 88	WATCHING PROPERLY	14853	D013-08	09/08	15/08
8065	Trenton Channel Lighted Buoy 25	WATCHING PROPERLY	14853	D005-08	04/08	15/08
8410	Peche Island Range Rear Light	WATCHING PROPERLY	14853	D026-08	14/08	15/08
20995	Sturgeon Bay Ship Canal Light	WATCHING PROPERLY	14919	M112-08	15/08	15/08

**DISCREPANCIES (PRIVATE AIDS)**

LLNR	Aid Name	Status	Chart No.	BNM Ref.	LNM St	LNM End
------	----------	--------	-----------	----------	--------	---------

7390	South Huron Valley Outfall West Lighted Buoy	MISSING	14853		38/07
7395	South Huron Valley Outfall Center Lighted Buoy	MISSING	14853		38/07
7400	South Huron Valley Outfall East Lighted Buoy	MISSING	14853		38/07
8140	Great Lakes Steel Shoal Lighted Buoy 1	MISSING	14853		38/07
8145	Great Lakes Steel Shoal Lighted Buoy 3	MISSING	18453		38/07
8150	Detroit Edison Cell Light South	LT EXT	14853		38/07
8155	Detroit Edison Cell Light North	LT EXT	14853		38/07
8735	Crescent Sail Yacht Club Breakwater South Light	LT EXT	14853		38/07
8745	Municipal Pier South Basin Light	MISSING	14853		38/07
8940	Black Creek Lighted Buoy 1	MISSING	14853		21/07
9840	Recors Point Dock Lower Light	LT EXT	14853	D080-06	25/06
15420	Washburn Harbor South Breakwater Light 2	DBN IMCH/NUM MSNG/DAMGD	14974		29/07
15425	Washburn Harbor North Breakwater Light 1	DBN IMCH/NUM MSNG/DAMGD	14974		29/07
19925	Four-Mile Crib Light	LT EXT	14927	M477-07	40/07
20390	Northpoint Marina Entrance Light 1	LT EXT	14904		47/07
<b>20490</b>	<b>Racine East Harbor Entrance Light 2</b>	<b>LT EXT</b>	<b>14925</b>	<b>M110-08</b>	<b>15/08</b>
20775	Port Washington South Projection Jetty Light	LT IMCH	14904	M542-07	46/07
22055.4	Suamico Lighted Buoy 4	LT EXT	14918	M328-07	30/07

**DISCREPANCIES (PRIVATE AIDS) CORRECTED**

LLNR	Aid Name	Status	Chart No.	BNM Ref.	LNM St	LNM End
------	----------	--------	-----------	----------	--------	---------

None

**PLATFORM DISCREPANCIES**

Name	Status	Position	BNM Ref.	LNM St	LNM End
------	--------	----------	----------	--------	---------

None

**PLATFORM DISCREPANCIES CORRECTED**

Name	Status	Position	BNM Ref.	LNM St	LNM End
------	--------	----------	----------	--------	---------

None

**SECTION III - TEMPORARY CHANGES and TEMPORARY CHANGES CORRECTED**

This section contains temporary changes and corrections to Aids to Navigation for this edition. When charted aids are temporarily relocated for dredging, testing, evaluation, or marking an obstruction, a temporary correction shall be listed in Section IV giving the new position.

**TEMPORARY CHANGES**

LLNR	Aid Name	Status	Chart No.	BNM Ref.	LNM St	LNM End
15525	Bayfield Municipal Breakwater Light	DISCONTINUED	14973	S158-07	44/07	
20680	Menomonee River Obstruction Lighted Buoy	ESTABLISHED	14924		31/06	

**TEMPORARY CHANGES CORRECTED**

LLNR	Aid Name	Status	Chart No.	BNM Ref.	LNM St	LNM End
9575	St Clair Flats Light 2	LWP	14853		21/07	29/08

**PLATFORM TEMPORARY CHANGES**

Name	Status	Position	BNM Ref.	LNM St	LNM End
------	--------	----------	----------	--------	---------

None

PLATFORM TEMPORARY CHANGES CORRECTED

Name	Status	Position	BNM Ref.	LNM St	LNM End
None					

SECTION IV - CHART CORRECTIONS

This section contains corrections to federally and privately maintained Aids to Navigation, as well as NOS corrections.

This section contains corrective actions affecting chart(s). Corrections appear numerically by chart number, and pertain to that chart only. It is up to the mariner to decide which chart(s) are to be corrected. The following example explains individual elements of a typical chart correction.

Chart Number	Chart Edition	Edition Date	Last Local Notice to Mariners	Horizontal Datum Reference	Source of Correction	Current Local Notice to Mariners
12327	91st Ed.	19-APR-97	Last LNM: 26/97	NAD 83		27/97
Chart Title: NY-NJ-NEW YORK HARBOR - RARITAN RIVER						
Main Panel 2245 NEW YORK HARBOR					CGD01	
(Temp) ADD	NATIONAL DOCK CHANNEL BUOY 3				at 40-41-09.001N 074-02-48.001W	
	Green can					
Corrective Action	Object of Corrective Action				Position	

(Temp) indicates that the chart correction action is temporary in nature. Courses and bearings are given in degrees clockwise from 000 true. Bearings of light sectors are toward the light from seaward. The nominal range of lights is expressed in nautical miles (NM) unless otherwise noted.

14846 13th Ed. 01-OCT-05 Last LNM: 07/08 NAD 83 15/08

Chart Title: SMALL-CRAFT BOOK CHART - West End of Lake Erie from Perrysburg, OH., of the Maumee R. to Huron R., Mich., and Bar Pt., Ont. (book of 34 charts)

Extension 1213 WEST END OF LAKE ERIE PAGE 4. Page/Side: 4

DELETE	Pipeline Area L PT 1 OF 2; Pipeline & Cable Area Chart No. 1: L40.2 (NOS NW-15506)	NOS	41-39-10.860N	083-31-35.080W
DELETE	Pipeline Area L PT 2 OF 2; Pipeline & Cable Area Chart No. 1: L40.2 (NOS NW-15506)	NOS	41-39-05.720N	083-31-33.400W
ADD	Pipeline Area M PT 1 OF 2; Pipeline & Cable Area Chart No. 1: L40.2 (NOS NW-15506)	NOS	41-39-10.860N	083-31-29.500W
ADD	Pipeline Area M PT 2 OF 2; Pipeline & Cable Area Chart No. 1: L40.2 (NOS NW-15506)	NOS	41-39-09.140N	083-31-28.210W

Extension 1214 WEST END OF LAKE ERIE PAGE 5. Page/Side: 5

DELETE	Pipeline Area N PT 1 OF 2; Pipeline & Cable Area Chart No. 1: L40.2 (NOS NW-15506)	NOS	41-39-14.800N	083-31-37.100W
DELETE	Pipeline Area N PT 2 OF 2; Pipeline & Cable Area Chart No. 1: L40.2 (NOS NW-15506)	NOS	41-39-05.800N	083-31-34.100W
ADD	Pipeline Area O PT 1 OF 2; Pipeline & Cable Area Chart No. 1: L40.2 (NOS NW-15506)	NOS	41-39-17.500N	083-31-34.000W
ADD	Pipeline Area O PT 2 OF 2; Pipeline & Cable Area Chart No. 1: L40.2 (NOS NW-15506)	NOS	41-39-09.100N	083-31-28.200W

14847 31st Ed. 01-FEB-05 Last LNM: 22/07 NAD 83 15/08

Chart Title: Toledo Harbor; Entrance Channel to Harbor

Main Panel 1250 TOLEDO HARBOR OHIO. Page/Side: N/A

DELETE	Pipeline Area Q PT 1 OF 2; Pipeline & Cable Area Chart No. 1: L40.2 (NOS NW-15506)	NOS	41-39-14.800N	083-31-37.100W
		NOS		



DELETE	Pipeline Area Q PT 2 OF 2; Pipeline & Cable Area Chart No. 1: L40.2 (NOS NW-15506)	41-39-05.800N	083-31-34.100W
		NOS	
ADD	Pipeline Area R PT 1 OF 2; Pipeline & Cable Area Chart No. 1: L40.2 (NOS NW-15506)	41-39-17.400N	083-31-34.300W
		NOS	
ADD	Pipeline Area R PT 2 OF 2; Pipeline & Cable Area Chart No. 1: L40.2 (NOS NW-15506)	41-39-08.700N	083-31-28.300W

**14853**      **17th Ed.**      **01-MAR-08**      **Last LNM: 11/08**      **NAD 83**      **15/08**

*ChartTitle: SMALL-CRAFT BOOK CHART - Detroit River, Lake St. Clair and St. Clair River (book of 47 charts)*

**Main Panel 1263 DETROIT RIVER, PAGE 2. Page/Side: 2**

NEW EDITION	Scale 1: VARIOUS; New edition (17 ed, 3/1/2008) due to numerous Notice to Mariner changes and topographic changes. This NOAA chart is now available in both the Print-on Demand and digital raster formats. See <a href="http://nauticalcharts.noaa.gov/mcd/dole.htm">http://nauticalcharts.noaa.gov/mcd/dole.htm</a> for details. The corresponding traditional paper chart will be available in two to eight weeks.	NOS --	--
-------------	---	-----------	----

**14883**      **43rd Ed.**      **01-JAN-04**      **Last LNM: 44/07**      **NAD 83**      **15/08**

*ChartTitle: St. Marys River - Munuscong Lake to Sault Ste. Marie*

**Main Panel 1342 ST MARYS RIVER MUNUSCONG LAKE TO SAULT STE MARIE . Page/Side: N/A**

CHANGE	Dark Hole East Range Front Light (LLNR 13170) To F G 5 St M 28ft	CGD09 at 46-15-53.800N	084-06-54.700W
CHANGE	Harwood Point East Range Front Light (LLNR 13190) To F R 5 St M 30ft	CGD09 at 46-19-17.198N	084-07-12.121W

**14901**      **15th Ed.**      **01-AUG-06**      **Last LNM: 12/08**      **NAD 83**      **15/08**

*ChartTitle: Lake Michigan (Mercator Projection)*

**Main Panel 1361 LAKE MICHIGAN. Page/Side: N/A**

RELOCATE	South Manitou Island Lighthouse (LLNR 18357) F W 12 St M 54ft	CGD09 from 45-00-44.880N to 45-00-27.654N	086-05-41.280W 086-05-37.620W
----------	--	---	----------------------------------

**14902**      **29th Ed.**      **01-JAN-05**      **Last LNM: 12/08**      **NAD 83**      **15/08**

*ChartTitle: North end of Lake Michigan, including Green Bay*

**Main Panel 1362 NORTH END OF LAKE MICHIGAN INCLUDING GREEN BAY. Page/Side: N/A**

RELOCATE	South Manitou Island Lighthouse (LLNR 18357) F W 12 St M 54ft	CGD09 from 45-00-44.880N to 45-00-27.654N	086-05-41.280W 086-05-37.620W
----------	--	---	----------------------------------

**14912**      **17th Ed.**      **01-MAY-03**      **Last LNM: 12/08**      **NAD 83**      **15/08**

*ChartTitle: Platte Bay to Leland;Leland;South Manitou Harbor*

**Inset 1396 SOUTH MANITOU HARBOR MICHIGAN. Page/Side: N/A**

RELOCATE	South Manitou Island Lighthouse (LLNR 18357) F W 12 St M 54ft	CGD09 from 45-00-44.880N to 45-00-27.654N	086-05-41.280W 086-05-37.620W
----------	--	---	----------------------------------

**Main Panel 1394 PLATTE BAY TO LELAND . Page/Side: N/A**

RELOCATE	South Manitou Island Lighthouse (LLNR 18357) F W 12 St M 54ft	CGD09 from 45-00-44.880N to 45-00-27.654N	086-05-41.280W 086-05-37.620W
----------	--	---	----------------------------------

**SECTION V - ADVANCE NOTICES**

This section contains advance notice of approved projects, changes to aids to navigation, or upcoming temporary changes such as dredging, etc. Mariners are advised to use caution while transiting these areas.

SUMMARY OF ADVANCED APPROVED PROJECTS

<u>Approved Project(s)</u>	<u>Project Date</u>	<u>Ref. LNM</u>
None		

Advance Notice(s)

**LAKE ERIE - Port Clinton - Chart 14846**

Port Clinton Light "2" (LLNR 5865) increase the range of the light from 6 miles to 9 miles.

LNM: 51/07

**LAKE ERIE - Sandusky River - Chart 14842**

Discontinue the following aids to navigation due to shoaling, low lake levels and inaccessability by servicing personal:

- Muddy Creek Bay Buoy 2 (LLNR 5057)
- Muddy Creek Bay Buoy 6 (LLNR 5065)
- Sandusky River Buoy 14 (LLNR 5070)
- Muddy Creek Bay Buoy 9 (LLNR 5056)
- Sandusky River Buoy 46 (LLNR 5095)
- Sandusky River Buoy 42 (LLNR 5102)
- Sandusky River Buoy 44 (LLNR 5110)
- Sandusky River Buoy 40 (LLNR 5111)
- Sandusky River Buoy 37 (LLNR 5115)
- Sandusky River Buoy 38 (LLNR 5120)
- Sandusky River Buoy 32 (LLNR 5129)
- Sandusky River Buoy 36 (LLNR 5133)
- Sandusky River Buoy 34 (LLNR 5137)
- Sandusky River Buoy 30 (LLNR 5141)
- Sandusky River Buoy 28 (LLNR 5145)
- Sandusky River Buoy 26 (LLNR 5149)
- Sandusky River Buoy 24 (LLNR 5153)
- Sandusky River Buoy 23 (LLNR 5157)
- Sandusky River Buoy 18 (LLNR 5161)
- Sandusky River Buoy 22 (LLNR 5163)
- Sandusky River Buoy 21 (LLNR 5166)
- Muddy Creek Bay Buoy 1 (LLNR 5169)

LNM: 12/08

**DETROIT RIVER - Livingston Channel - Chart 14848**

Propose to change the lantern from the existing incandescent lamps to an energy efficient LED, this will reduce the range of the light from 4 to 3 miles:

- Livingston Channel Light "21" (LLNR 7260)
- Livingston Channel Light "23" (LLNR 7250)
- Livingston Channel Light "24" (LLNR 7255)
- Livingston Channel Light "25" (LLNR 7240)
- Livingston Channel Light "26" (LLNR 7245)

LNM: 09/07

**LAKE ST CLAIR - St Clair Cut-Off Channel - Chart 14852**

Establish a temporary lighted buoy inside the channel in the vicinity of Light "X32/2" (LLNR 8595) to mark shoaling. The buoy will be St. Clair Cut-Off Channel Lighted Buoy "32" (LLNR 8600.1) with a characteristic of Q R and a 3 mile range. The approximate position is 42-30.969N 082-41.171W.

LNM: 15/08

**ST CLAIR RIVER - Chart 14852**

Propose to change the lantern from the existing incandescent lamps to an energy efficient LED, this will reduce the range of the light from 4 to 3 miles:

- Fawn Island Upper End LB "42" (LLNR 9825)

LNM: 09/07

**LAKE ST. CLAIR - Charts 14850, 14853**

Lake St. Clair Light (LLNR 8525) discontinue the higher intensity beam upstream. Increase the range of the light from 6 to 9 miles.

LNM: 23/07

**LAKE HURON - Chart 14860**

Change the commissioning date of the following buoy to 28 April:

- NOAA Lighted Weather Buoy -45008- (LLNR 10010)

LNM: 12/08

**LAKE HURON - Harrisville to Forty Mile Point - Chart 14864**

Sturgeon Point Light (LLNR 11345) change to private aid. Characteristics and range will remain the same.

LNM: 01/07

**STRAITS OF MACKINAC - Cheboygan River - Chart 14881**

Propose to change the lantern from the existing incandescent lamps to an energy efficient LED, this will reduce the range of the light from 4 to 3 miles:

Cheboygan Entrance Light Buoy 2 (LLNR 11780)

LNM: 27/07

**LAKE MICHIGAN - Chart 14904**

Change the commissioning date of the following buoys to 21 April:

NOAA Lighted Weather Buoy "45007" (LLNR 20595)

NOAA Lighted Weather Buoy "45002" (LLNR 18310)

LNM: 12/08

**LAKE MICHIGAN - Grand Traverse Bay - Chart 14913**

Change the commissioning date of the following buoy to 21 April:

South Point Lighted Bell Buoy "2" (LLNR 18100)

LNM: 12/08

**LAKE MICHIGAN - Lake Charlevoix - Chart 14942**

Charlevoix South Pier head Light (LLNR 17925) change the color of the day mark from white to red.

LNM: 51/07

**LAKE MICHIGAN - Menominee and Marinette Harbors - Chart 14917**

Establish the following buoys to mark the Regulated Navigation Area (RNA) on the Menominee River. The buoys will be maintained from 14 April to 07 November.

Menominee River RNA Buoy "A" (LLNR 21943) Yellow Nun with a black letter "A" in position 45-05-59.5N and 087-36-48.6W

Menominee River RNA Buoy "B" (LLNR 21956) Yellow Can with a black letter "B" in position 45-06-03.5N and 087-37-14.5W

LNM: 05/07

**LAKE MICHIGAN - Milwaukee Harbor - Chart 14924**

Texas Rock Buoy "2" (LLNR 20735) change the buoy from a Red Nun "2" to a white and orange regulatory marker with black letters "DANGER ROCKS".

LNM: 31/07

**LAKE MICHIGAN - Platte Bay to Leland - Chart 14912**

Change the commissioning date of the following buoys to 21 April:

Pyramid Point Shoal Lighted Buoy "5" (LLNR 18350)

South Manitou Island Lighted Gong Buoy "8" (LLNR 18360)

Sleeping Bear Lighted Bell Buoy "7" (LLNR 18365)

LNM: 12/08

**LAKE MICHIGAN - Port Washington to Waukegan - Chart 14904**

Change the commissioning date of the following buoy to 21 April:

Milwaukee South Point Lighted Bell Buoy "1" (LLNR 20630)

LNM: 12/08

**LAKE MICHIGAN - Sheboygan - Chart 14922**

Sheboygan Breakwater Light (LLNR 20820) Install a user activated fog signal system; to operate the fog signal by keying the microphone on VHF Marine radio channel 79 five times.

LNM: 12/08

**LAKE MICHIGAN - St. Joseph - Chart 14930**

St. Joseph North Pier Inner Light (LLNR 19520) move light to rail and reduce range to 9 miles.

LNM: 49/06

**LAKE MICHIGAN - St. Joseph and Benton Harbor - Chart 14930**

Discontinue the following aids to navigation due to shoaling and low water levels:

- St. Joseph River Buoy -4- (LLNR 19531)
- St. Joseph River Buoy -4A- (LLNR 19531.1)
- St. Joseph River Buoy -6- (LLNR 19532)
- St. Joseph River Buoy -8- (LLNR 19533)
- St. Joseph River Buoy -10- (LLNR 19533.1)
- St. Joseph River Buoy -12- (LLNR 19533.2)
- St. Joseph River Buoy -13- (LLNR 19533.3)

LNM: 12/08

**LAKE MICHIGAN - Upper Green bay - Chart 14909**

Little Gull Island LBB2 (LLNR 21445) Move Aid Position further off of the shoal.

LNM: 51/07

**LAKE MICHIGAN- Chicago Lake Front - Chart 14927**

Change the commissioning date of the following buoys to 21 April:

- Indiana Shoal Lighted Gong Buoy "2" (LLNR 19625)
- Chicago Lake Front Northeast Shoal Lighted Buoy "2" (LLNR 19790)

LNM: 12/08

**LAKE MICHIGAN - Algoma to Sheboygan - Chart 14903**

Two Rivers North Pierhead light (LLNR 20925) change the characteristic from F R to FI R 2.5s. Increase the range of the light from 9 to 12 miles. Install a user activated fog signal; to operate the fog signal by keying the microphone on VHF Marine radio channel 79 five times.

LNM: 27/07

**LAKE MICHIGAN - Waugoshance Point to Seul Point - Chart 14911**

Seul Choix Point Light (LLNR 21490) reduce the range of the light from 26 miles to 15 miles.

LNM: 27/07

**LAKE MICHIGAN - Waukegan to South Haven - Chart 14905**

Michigan City East Pierhead Light (LLNR 19545) change the operation of the Fog Signal to a user activated system. Install a user activated fog signal system; to operate the fog signal by keying the microphone on VHF Marine radio channel 79 five times.

LNM: 49/06

**LAKE MICHIGAN - Manitowoc Harbor - Chart 14922**

Manitowoc Breakwall Light ( LLNR 20860) Reduce the range of the light from 15 to 12 miles. Install a user activated fog signal system; to operate the fog signal by keying the microphone on VHF Marine radio channel 79 five times.

LNM: 01/07

**LAKE MICHIGAN - Milwaukee Harbor - Chart 14924**

Milwaukee Breakwater Light (LLNR 20635) Discontinue the floodlights. Install a user activated fog signal system; to operate the fog signal by keying the microphone on VHF Marine radio channel 79 five times.

LNM: 01/07

**LAKE MICHIGAN - Port Washington to Waukegan - Chart 14904**

Waukegan Harbor Light (LLNR 20315) Reduce the range of the light from 14 to 12 miles. Install a user activated fog signal system; to operate the fog signal by keying the microphone on VHF Marine radio channel 79 five times.

LNM: 01/07

**LAKE MICHIGAN - Indiana Harbor - Charts 14926, and 14929**

Indiana Harbor East Breakwater Light (LLNR 19675) reduce the range of the light from 20 to 12 miles. Install a user activated fog signal system; to operate the fog signal by keying the microphone on VHF Marine radio channel 79 five times.

LNM: 11/07

**ST MARYS RIVER - Munuscong Lake to Sault Ste. Marie - Chart 14883**

Change the lantern from the existing incandescent lamps to an energy efficient LED, this will reduce the range of the light from 4 to 3 miles:

- Munuscong Channel (Upbound) Lighted Buoy 5 (LLNR 13050)
- Sailors Encampment Channel Lighted Buoy 17 (LLNR 13115)
- Middle Neebish Channel Lighted Buoy 43 (LLNR 13285)
- Middle Neebish Channel Lighted Buoy 59 (LLNR 13345)
- Lake Nicolet Lighted Buoy 63 (LLNR 13380)
- West Neebish Channel (Downbound) Lighted Buoy 53 (LLNR 13485)
- Bayfield Channel Lighted Buoy 107 (LLNR 14170)
- Munuscong Channel Lighted Buoy 29 (LLNR 13217)
- Lake Nicolet Lighted Buoy 66 (LLNR 13395)
- Pipe Island Lighted Buoy 12 (LLNR 12880)
- Round Island Lighted Buoy 25 (LLNR 13740)
- Cedar Point Lighted Bouy 23 (LLNR 14410)
- Big Point Lighted Buoy 7 (LLNR 14265)
- Lake Nicolet Lighted Buoy 83 (LLNR 13970)
- West Neebish Channel (Downbound) Lighted Buoy 46 (LLNR 13525)
- West Neebish Channel (Downbound) Light 16 (LLNR 13680)
- Lake Nicolet Light 80 (LLNR 13465)
- West Neebish Channel (Downbound) Light 28 (LLNR 13615)
- West Neebish Channel (Downbound) Light 27 (LLNR 13620)
- West Neebish Channel (Downbound) Light 14 (LLNR 13690)

LNM: 43/07

**LAKE SUPERIOR - Beaver Bay to Pigeon Point - Chart 14967**

Grand Portage Bay Entrance Light (LLNR 16635) increase the range of the light from 7 to 9 miles.

LNM: 23/07

**LAKE SUPERIOR - Apostle Islands - Chart 14973**

Michigan Island Light (LLNR 15275) increase the range of the light from 11 to 12 miles

LNM: 41/07

**SECTION VI - PROPOSED CHANGES**

Periodically, the Coast Guard evaluates its system of aids to navigation to determine whether the conditions for which the aids to navigation were established have changed. When changes occur, the feasibility of improving, relocating, replacing, or discontinuing aids are considered. This section contains notice(s) of non-approved, proposed projects open for comment. SPECIAL NOTE: Mariners are requested to respond in writing to the District office unless otherwise noted (see banner page for address).

**PROPOSED WATERWAY PROJECTS OPEN FOR PUBLIC COMMENT**

<u>Proposed Project(s)</u>	<u>Closing</u>	<u>Docket No.</u>	<u>Ref. LNM</u>
None			

Proposed Change Notice(s)

**LAKE ERIE - West End of Sandusky Bay - Chart 14842**

- Muddy Creek
- Squaw Island Light 12 (LLNR 5085) change flash characteristic to QW and day board to read "Danger Shoal"
- Sandusky River
- Sandusky River Daybeacon 13 (LLNR 5090) change day board to white with orange bands and to read "Danger Rock"
- Sandusky River Daybeacon 15 (LLNR 5096) change day board to white with orange bands and to read "Danger Rock"
- Sandusky River Daybeacon 17 (LLNR 5100) change day board to white with orange bands and to read "Danger Rock"

LNM: 13/08

**LAKE ERIE - Black Rock Canal / Niagara River - Chart 14832, 14833**

Propose to change the lantern from its current incandescent lamps to an energy efficient LED which will reduce the range of the lantern form 4 to 3 miles.

- Black Rock Canal LB "1" (LLNR 2785)
- Black Rock Canal LB "3" (LLNR 2795)
- Black Rock Canal LB "9" (LLNR 2825)
- Black Rock Canal LB "10" (LLNR 2830)
- Strawberry Island LB "7" (LLNR 3025)
- Tonawanda Channel LB "28" (LLNR 3155)

LNM: 11/08

**LAKE ST. CLAIR - Charts 14850 and 14843**

Propose to change the lantern from its current incandescent lamps to an energy efficient LED which will reduce the range of the lantern from 4 to 3 miles.

Clinton River Entrance LB "CR" (LLNR 8975)  
Clinton River Entrance LB "1" (LLNR 8980)  
Clinton River Entrance LB "2" (LLNR 8985)  
North Channel Entrance LB "2NC" (LLNR 9305)  
Middle Channel Entrance LB "1MC" (LLNR 9435)  
Point Huron LB "1PH" (LLNR 8925)  
St. Clair Flats Old Channel LB "2OC" (LLNR 9530)  
Gaukler Shoal Junction LB (LLNR 8855)  
Gahkler Shoal LB "1" (LLNR 8850)

LNM: 10/08

**LAKE HURON - Lexington Harbor - Chart 14862**

Discontinue the following aids to navigation due to shoaling and low water levels:

LLNR	Aid Name
10105	Lexington Harbor Buoy -5-
10110	Lexington Harbor Buoy -6-

LNM: 03/08

**LAKE HURON - Harrisville to Forty Mile Point - Chart 14864**

Presque Isle Light (LLNR 11550) Change the aid from a federal aid to navigation to a private aid to navigation. The characteristic will remain the same.

LNM: 20/07

**STRAITS OF MACKINAW - Michigan Inland Route - Chart 14886**

Propose to change the lantern from the existing incandescent lamps to an energy efficient LED, this will reduce the range of the light from 4 to 3 miles on the following aids:

Pickereel Channel Entrance Light "2" (LLNR 12135)  
Crooked Lake Light "77" (LLNR 12120)

LNM: 12/08

**LAKE MICHIGAN - Port Washington - Chart 14901**

Port Washington Breakwater Light (LLNR 20770) Install a user activated fog signal system; to operate the fog signal key the microphone on VHF Marine Radio channel 79 five times.

LNM: 15/08

**ST MARYS RIVER - De Tour to Munuscong Lake - Chart 14882**

Propose to change the lantern from the existing incandescent lamps to an energy efficient LED, this will reduce the range of the light from 4 to 3 miles.:

Lime Island Lighted Buoy "14A" (LLNR 12910)  
Lime Island Lighted Buoy "16" (LLNR 12935)  
Point Aux Frenes Lighted Buoy "22" (LLNR 12980)  
Point Aux Frenes Lighted Buoy "24" (LLNR 12990)  
Hay Point Reef Lighted Buoy "18A" (LLNR 12955)  
Munuscong Lake Lighted Buoy "25" (LLNR 13005)  
Munuscong Lake Lighted Buoy "26" (LLNR 13010)

LNM: 05/08

**LAKE SUPERIOR - Apostle Islands - Chart 14973**

Sand Island Buoy "2" (LLNR 15575) change to a seasonal buoy from 21 May to 14 October. No winter mark.

LNM: 13/08

**LAKE SUPERIOR - Apostle Islands - Chart 14973**

Outer Island Light (LLNR 15255) Propose to change the lantern from the existing incandescent lamps to an energy efficient LED this will reduce the range of the light from 15 to 12 miles.

Devils Island Light (LLNR 15565) Propose to change the lantern from the existing incandescent lamps to an energy efficient LED this will reduce the range of the light from 15 to 12 miles.

LNM: 07/08

**LAKE SUPERIOR - Big Bay Point to Redridge - Chart 14964**

Huron Island Light (LLNR 14730) Propose to change the lantern from the existing incandescent lamps to an energy efficient LED this will reduce the range of the light from 15 to 12 miles.

Manitou Island Light (LLNR 15170) Propose to change the lantern from the existing incandescent lamps to an energy efficient LED this will reduce the range of the light from 18 to 12 miles.

LNM: 07/08

**LAKE SUPERIOR - Duluth Superior Harbor - Chart 14975**

Propose to change the lantern from the existing incandescent lamps to an energy efficient LED, this will reduce the range of the light from 4 to 3 miles:

Superior Front Channel Lighted Buoy "2" (LLNR 15705)

Superior Front Channel Lighted Buoy "14" (LLNR 15805)

Superior Front Channel Lighted Buoy "18" (LLNR 15820)

St. Louis Bay South Channel Western Section Lighted Buoy "13" (LLNR 16165)

LNM: 05/08

**LAKE SUPERIOR - Isle Royale - Chart 14976**

Passage Island Light (LLNR 16835) Propose to change the lantern from the existing incandescent lamps to an energy efficient LED this will reduce the range of the light from 17 to 12 miles.

Rock of Ages Light (LLNR 16655) Propose to change the lantern from the existing incandescent lamps to an energy efficient LED this will reduce the range from 17 to 12 miles.

LNM: 07/08

**For any comments or questions on these proposed changes please contact**

Doug Sharp of the Ninth District Aids to Navigation office at (216) 902-6070.

---

## SECTION VII - GENERAL

This section contains information of general concern to the Mariners. Mariners are advised to use caution while transiting these areas.

---

**Waterways Analysis and Management System Study - 2008**

The Coast Guard is conducting a Waterways Analysis and Management System Study on the following waterways during 2008. The study focuses on the area's aid to navigation system, waterborne commerce, marine casualty information, emergency response plans, routine and emergency communication capabilities, and future development projects. Any company or individual wishing to provide comments or participate in a user survey should contact the office listed below each study area.

Lake Erie - Conneaut Harbor - Chart 14824

Contact: Commanding Officer

USCG Sector Buffalo

1 Fuhrmann Blvd.

Buffalo, N.Y. 14203

(716) 813-9524

Lake Erie - Erie Islands - Chart 14844

Contact: Commanding Officer

USCG Sector Detroit

110 Mt. Elliot Ave.

Detroit, MI 48207

(313) 568-9523

Lake Huron - Saginaw Bay - Chart 14863, 14867

Contact: Commanding Officer

USCGC Hollyhock (WLB 214)

2700 Omar Street

Port Huron, MI 48060

(810) 982-2684

Lake Superior - Whitefish Bay - Chart 14884

Contact: Commanding Officer

USCGC Alder (WLB 216)

1201 Minnesota Avenue

Duluth, MN 55802-2492

(218) 529-3131

Lake Michigan - Northern Green Bay, Little Bay De Noc - Chart 14908, 14909, 14915

**Waterways Analysis and Management System Study - 2008**

Contact: Commanding Officer  
USCGC Mobile Bay (WTGB 103)  
P.O. Box 287  
Sturgeon Bay, Wi. 54235

Lake Michigan - Manitowoc and Sheboygan - Chart 14922

Contact: Commanding Officer  
USCG Sector Lake Michigan  
2420 South Lincoln Memorial Drive  
Milwaukee, Wi. 53207  
(414) 741-7188

Lake Huron - Tawas Bay - chart 14863

Contact: Commander (Aid to Navigation Officer)  
U.S. Coast Guard Sector Detroit  
110 Mt. Elliot Ave.  
Detroit, Michigan 48207-4380  
(313) 568-9523

Lake Huron/Lake Michigan - Mackinaw Straits - chart 14881

Contact: Commanding Officer  
USCGC Mackinaw (WLBB 30)  
632 Coast Guard Drive  
Cheboygan, Michigan 49783-9501  
(231) 596-2030

LNM: 07/08

**LAKE ERIE - OH - Cleveland Harbor, Scheduled Lighting Outage, Chart 14839**

The red navigation lights on the eastern side of the Eagle Street Bridge at Mile 2.80 over the Cuyahoga River will be extinguished from 1400 through 2200 on April 19, 2008.

LNM: 15/08

**LAKE ERIE - OH - Lorain Harbor, Scheduled Bridge (Sheet Pile) Replacement, Chart 14841**

Contractors will remove and replace bulkhead materials (sheet pile) at the OH-6 (Erie Avenue) Bridge at Mile 0.6 over the Black River from May 1 through July 1, 2008. A tug (50' x 16') and barge (70' x 30') may be in the vicinity of the bridge abutments from 0700 through 1500, Monday through Friday. The tug will move the barge for transiting marine traffic with 15-minute advance notice and may be contacted via Marine Radio, Channel 16 or cellular phone: 216-857-4152. When not in use, the tug and barge will be moored well clear of the navigation channel. Mariners are urged to transit with caution.

LNM: 15/08

**\*\*\*\*\* REVISED LNM 15/08 \*\*\*\*\***

**LAKE MICHIGAN - WI-- Sturgeon Bay Harbor, Bridge Construction, Chart 14919**

Construction of the new Maple-Oregon Bridge at Mile 4.17 over the Sturgeon Bay Ship Canal will continue through October 2008. Presently, two 14-foot sections of the new bascule leafs extend over the channel from both the east and west sides. Three work barges (80- X 60-) may be in the vicinity of the navigation channel from 0600 through 1700, Monday through Saturday. Mariners who require the barge to move must provide at least twelve-hours advance notice prior to arrival via Marine Radio, Channel 16 or by calling (920) 858-3570 (24-hours) or (920) 286-2876 (24-hours). At night, the work barges will be clear of the navigation channel and lighted in accordance with navigation rules. The new components of the bridge structure will also be lighted. Mariners are urged to pass the construction area with extreme caution. [43/06] [12/07] [27/07] [34/07] [49/07] [03/08] [04/08] [13/08] [15/08]

LNM: 15/08

**LAKE MICHIGAN - IL - Calumet Harbor, Scheduled Electrical Maintenance, Chart 14926, Page 25**

The 100th Street Bridge at Mile 1.78 over the Calumet River will be painted from 0700 on April 7 through 2400 on July 1, 2008. During this period, a work barge (70' x 35') will be positioned at various locations below the bridge. Work hours may be 24 hours a day, 7 days a week. The barge will move for transiting marine traffic with 2-hour advance notice which can be provided via Marine Radio, Channel 16 or cell phone: 219-730-9422. When not in use, the barge will be removed from beneath the bridge; moored clear of the navigation channel and lighted in accordance with navigation rules.

LNM: 15/08

**LAKE MICHIGAN - IL - Chicago Harbor, Scheduled Mechanical Repair, Chart 14926, Page 23**

Electrical repairs will be conducted on the Columbus Drive Bridge at Mile 0.67 over the Main Branch of the Chicago River from 0700 on April 9 through 0700 on April 10, 2008. During this period, the bridge will not open for masted navigation.

LNM: 15/08

**LAKE MICHIGAN - IL - Chicago Harbor, Scheduled Structural Maintenance, Chart 14926, Page 23**

The north leaf of the State Street Bridge at Mile 1.05 over the Main Branch of the Chicago River will be inoperable through April 17, 2008. The south leaf will open upon signal. Mariners are urged to pass with caution



**GREAT LAKES - GENERAL - MARINE EVENTS - SAFETY ZONES - SECURITY ZONES**

Events listed below are those events that may have accompanying special local regulations. Mariners transiting these areas should contact the U.S. Coast Guard with any questions and are asked to exercise caution when navigating through the area of the event. Summary located in Enclosure (2)

**Lake Michigan**

Safety Zones

The event: Michigan Aerospace Challenge  
 Location: Lake Michigan, Muskegon, MI  
 Date/Time: 26 April 08, 0800-1800 Sponsor or POC: VHF-FM 16 or Sector Lake Michigan at (414) 747-7182

The event: Tulip Time Festival  
 Location: Lake Michigan, Holland, MI  
 Date/Time: 02 May 08, 1900-2300 Sponsor or POC: VHF-FM 16 or Sector Lake Michigan at (414) 747-7182

The event: Rockets For Schools  
 Location: Lake Michigan, Sheboygan, WI  
 Date/Time: 10 May 08, 1200-1800 Sponsor or POC: VHF-FM 16 or Sector Lake Michigan at (414) 747-7182

The event: Celebrate DePere  
 Location: Fox River, DePere, WI  
 Date/Time: 24 May 08, 1200-2100 Sponsor or POC: VHF-FM 16 or Sector Lake Michigan at (414) 747-7182

The event: River Splash  
 Location: Milwaukee River, Milwaukee, WI  
 Date/Time: 30 May 08, 1930-2100 Sponsor or POC: VHF-FM 16 or Sector Lake Michigan at (414) 747-7182

The event: Pride Fest  
 Location: Milwaukee River, Milwaukee, WI  
 Date/Time: 30 May 08, 1930-2100 Sponsor or POC: VHF-FM 16 or Sector Lake Michigan at (414) 747-7182

The event: Port Washington Pirate Fest  
 Location: Lake Michigan, Port Washington, WI  
 Date/Time: 7 June 08, 1900-2100 Sponsor or POC: VHF-FM 16 or Sector Lake Michigan at (414) 747-7182

The event: Spring Lake Heritage Fest  
 Location: Grand River, Spring Lake, MI  
 Date/Time: June 16, 2200-2300 Sponsor or POC: VHF-FM 16 or Sector Lake Michigan at (414) 747-7182

The event: Racine Harbor Fest  
 Location: Lake Michigan, Racine, WI  
 Date/Time: 20 June 08, 2130-2200 Sponsor or POC: VHF-FM 16 or Sector Lake Michigan at (414) 747-7182

The event: Elberta Solstice Fest  
 Location: Lake Michigan, Elberta, MI  
 Date/Time: 20 June 08, 2130-2300 Sponsor or POC: VHF-FM 16 or Sector Lake Michigan at (414) 747-7182

The event:  
 Location: Milwaukee River, Milwaukee, WI  
 Date/Time: 30 May 08, 1930-2100 Sponsor or POC: VHF-FM 16 or Sector Lake Michigan at (414) 747-7182

**SECTION VIII - LIGHT LIST CORRECTIONS**

An Asterisk \*, indicates the column in which a correction has been made to new information

(1) No.	(2) Name and Location	(3) Position	(4) Characteristic	(5) Height	(6) Range	(7) Structure	(8) Remarks
18357	South Manitou Island Lighthouse	45-00-27.654N 086-05-37.620W	F W	54 16			Private aid. 15/08
		*					

## SECTION VIII - LIGHT LIST CORRECTIONS (Continued)

(1) No.	(2) Name and Location	(3) Position	(4) Characteristic	(5) Height	(6) Range	(7) Structure	(8) Remarks
21595	Big Bay De Noc Shoal Buoy 1 Marks south side of shoal.	45-44-42.017N 086-42-20.294W				Green can.	15/08
		*					

---



---

**PUBLICATION CORRECTIONS**


---

None

---



---

**ENCLOSURES**


---

**(1) Summary of Dredging**[SUMMARY OF DREDGIN2.pdf](#)

Construction Operations in Effect

**(2) Great Lakes - General - Marine Events**[GREAT LAKES.pdf](#)

Summary of Marine Events

**(3) LAKE MICHIGAN - Sturgeon Bay and Canal**[sturgeon bay wisconsin3.pdf](#)

Proposed Changes to Navigation

**(4) LAKE ST CLAIR - St. Clair Cut-Off Channel**[mapstclaircut21.pdf](#)

- Severe Shoaling - Charts 14850, and 14853

---



---

John E. Crowley, JR  
Rear Admiral, U. S. Coast Guard  
Commander, Ninth Coast Guard District

**SUMMARY OF DREDGING/CONSTRUCTION OPERATIONS IN EFFECT**

The LNM column is where the entry originally appeared and where detailed information may be obtained. The dates listed for completions are tentative.

<b>Location</b>	<b>LNM</b>	<b>Subject</b>	<b>Hours / Days</b>	<b>Until</b>
<b><u>LAKE ERIE</u></b>				
Toledo Harbor, OH	12/08	CONTINUATION OF BRIDGE REHABILITATION	VARIOUS	31 MAY 08
Ashtabula Harbor, OH	09/08, 14/08	BRIDGE RESURFACED	0700-1700 / 7 DAYS	11 APR 08
Lorain Harbor, OH	15/08	SCHEDULED BRIDGE REPLACEMENT	0700-1500/ MON-FRI	01 JUL 08
Cleveland Harbor, OH	15/08	SCHEDULED LIGHTING OUTAGE	1400-2200	19 APR 08
<b><u>DETROIT RIVER</u></b>				
Trenton Channel, MI	51/07	SCHEDULED BRIDGE MAINTENANCE	0600-1430 /MON-FRI	TBD
Pte Mouille Access Channel	10/08	MAINTENANCE DREDGING	24 HRS A DAY/ 7 DAYS	30 AUG 08
<b><u>STRAITS OF MACKINAC</u></b>				
Cheboygan Harbor, MI	44/07	DAM REHABILITATION	0700-2200/ 7 DAYS	30 OCT 08
Mackinac Island, MI	35/07	HARBOR REPAIRS AND RENOVATIONS	0800-2000/ MON-SAT	15 MAY 08
Mackinac Island, MI	15/08	HARBOR REPAIRS AND RENOVATIONS	0800-2000/ MON-SAT	15 JUN 08
<b><u>LAKE MICHIGAN</u></b>				
Chicago Harbor, IL	37/07	BRIDGE UNABLE TO OPEN	24 HRS A DAY/ 7 DAYS	TBD
Milwaukee Harbor, WI	40/07	WINTER BRIDGE OPERATING SCHEDULE	24 HRS A DAY/ 7 DAYS	12 APR 08
Two Rivers Harbor, WI	40/07	SCHEDULED BRIDGE DEMOLITION & CONSTRUCTION	24 HRS A DAY/ 7 DAYS	30 JUN 08
Wilmette Harbor, IL	07/08	MAINTENANCE DREDGING	24 HRS A DAY/ 7 DAYS	01 JUN 08
Holland Harbor	07/08	MAINTENANCE DREDGING	24 HRS A DAY/ 7 DAYS	30 MAY 08
Grand Haven Harbor	07/08	MAINTENANCE DREDGING	24 HRS A DAY/ 7 DAYS	30 MAY 08
Milwaukee Harbor, WI	10/08	BRIDGE REHABILITATION	0700-1600/ MON-SAT	31 MAY 08
Chicago Harbor, IL	11/08	BRIDGE CLOSURES	VARIOUS	27 NOV 08
Milwaukee Harbor, WI	11/08	BRIDGE REHABILITATION	0700-1630/ MON-SAT	31 MAY 08
Milwaukee Harbor, WI	11/08	BRIDGE REHABILITATION	VARIOUS	14 APR 08
Chicago Harbor, IL	13/08	INOPERABLE STATUS	VARIOUS	TBD
Sturgeon Bay Harbor, WI	13/08	BRIDGE CONSTRUCTION	VARIOUS	OCT 2008
Chicago Harbor, IL	11/08, 14/08	BRIDGE MAINTENANCE	VARIOUS	16 APR 08
Calumet Harbor, IL	15/08	SCHEDULED ELECTRICAL MAINTENANCE	VARIOUS	01 JUL 2008
Chicago Harbor, IL	15/08	SCHEDULED MECHANICAL REPAIR	VARIOUS	10 APR 2008
Chicago Harbor, IL	15/08	SCHEDULED STRUCTURAL MAINTENANCE	VARIOUS	17 APR 2008
Sturgeon Bay Harbor, WI	13/08, 15/08	BRIDGE CONSTRUCTION	0600-1700/ MON-SAT	OCTOBER 08
<b><u>LAKE SUPERIOR</u></b>				
Ashtabula River	13/08	DREDGING	24 HRS/ 7 DAYS	15 JUN 08
<b><u>FOX RIVER</u></b>				
Oshkosh Harbor, WI	37/07	BRIDGE REPAIRS	VARIOUS	01 MAY 08

**GREAT LAKES - GENERAL - MARINE EVENTS – SAFETY ZONES – SECURITY ZONES**

Events listed below are those events that may have accompanying special local regulations. Mariners transiting these areas should contact the U.S. Coast Guard with any questions and are asked to exercise caution when navigating through the area of the event.

<u>Location</u>	<u>LNM</u>	<u>Events</u>	<u>Dates</u>	<u>Time (Local)</u>	<u>POC or Sponsor</u>	<u>Number</u>
-----------------	------------	---------------	--------------	---------------------	-----------------------	---------------

**LAKE ERIE - MARINE EVENTS**

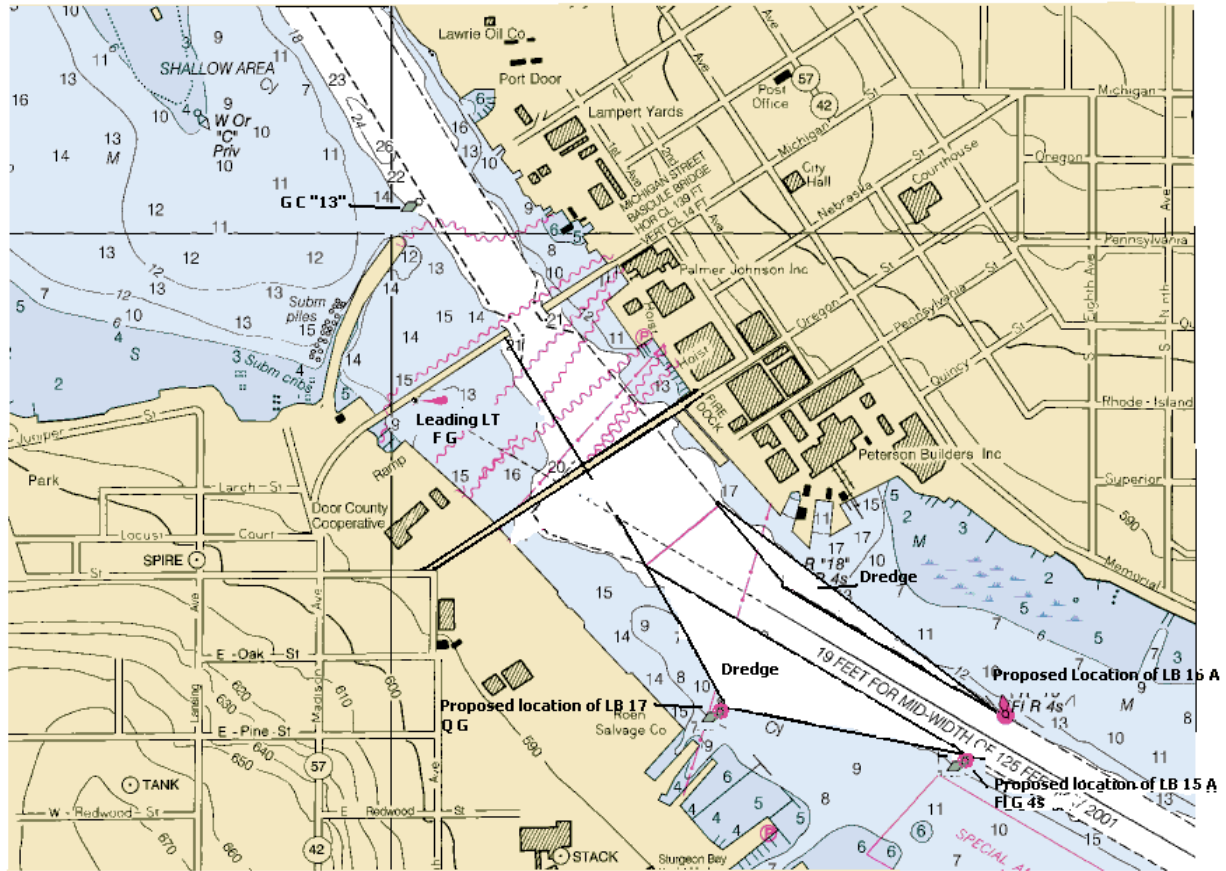
Mentor Headlands, OH	07/08	Triathlon	10 Aug 08	0600-1100	Mickey Rzymek	
Cleveland, OH	08/08	FLW Fishing Tournament	24-27 Sep 08	0700-1500	Kevin Hunt	
Cleveland, OH	08/08	Y-ME Breast Cancer Walk	11 May 08	0900-1030	Darby Bentoff O'Brien	

**LAKE ERIE - SAFTY ZONE**

Cleveland , OH	08/08	Queens Cup Canoe Race	06 Jun 08	1230-1700	John Harkness	
----------------	-------	-----------------------	-----------	-----------	---------------	--

**LAKE MICHIGAN - SAFTY ZONE**

Muskegon, MI	15/08	Michigan Aerospace Challenge	26 April 08	0800-1800	Sector Lake Michigan	(414) 747-7182
Holland, MI	15/08	Tulip Time Festival	02 May 08	1900-2300	Sector Lake Michigan	(414) 747-7182
Sheboygan, MI	15/08	Rockets For Schools	10 May 08	1200-1800	Sector Lake Michigan	(414) 747-7182
DePere, WI	15/08	Celebrate DePere	24 May 08	1200-2100	Sector Lake Michigan	(414) 747-7182
Milwaukee, WI	15/08	River Splash	30 May 08	1930-2100	Sector Lake Michigan	(414) 747-7182
Milwaukee, WI	15/08	Pride Fest	30 May 08	1930-2100	Sector Lake Michigan	(414) 747-7182
Port Washington, WI	15/08	Port Washington Pirate Fest	07 June 08	1900-2100	Sector Lake Michigan	(414) 747-7182
Spring Lake, MI	15/08	Spring Lake Heritage Fest	16 June 08	2200-2300	Sector Lake Michigan	(414) 747-7182
Racine, WI	15/08	Racine Harbor Fest	20 June 08	2130-2200	Sector Lake Michigan	(414) 747-7182
Elberta, MI	15/08	Elberta Solstice Fest	20 June 08	2130-2300	Sector Lake Michigan	(414) 747-7182

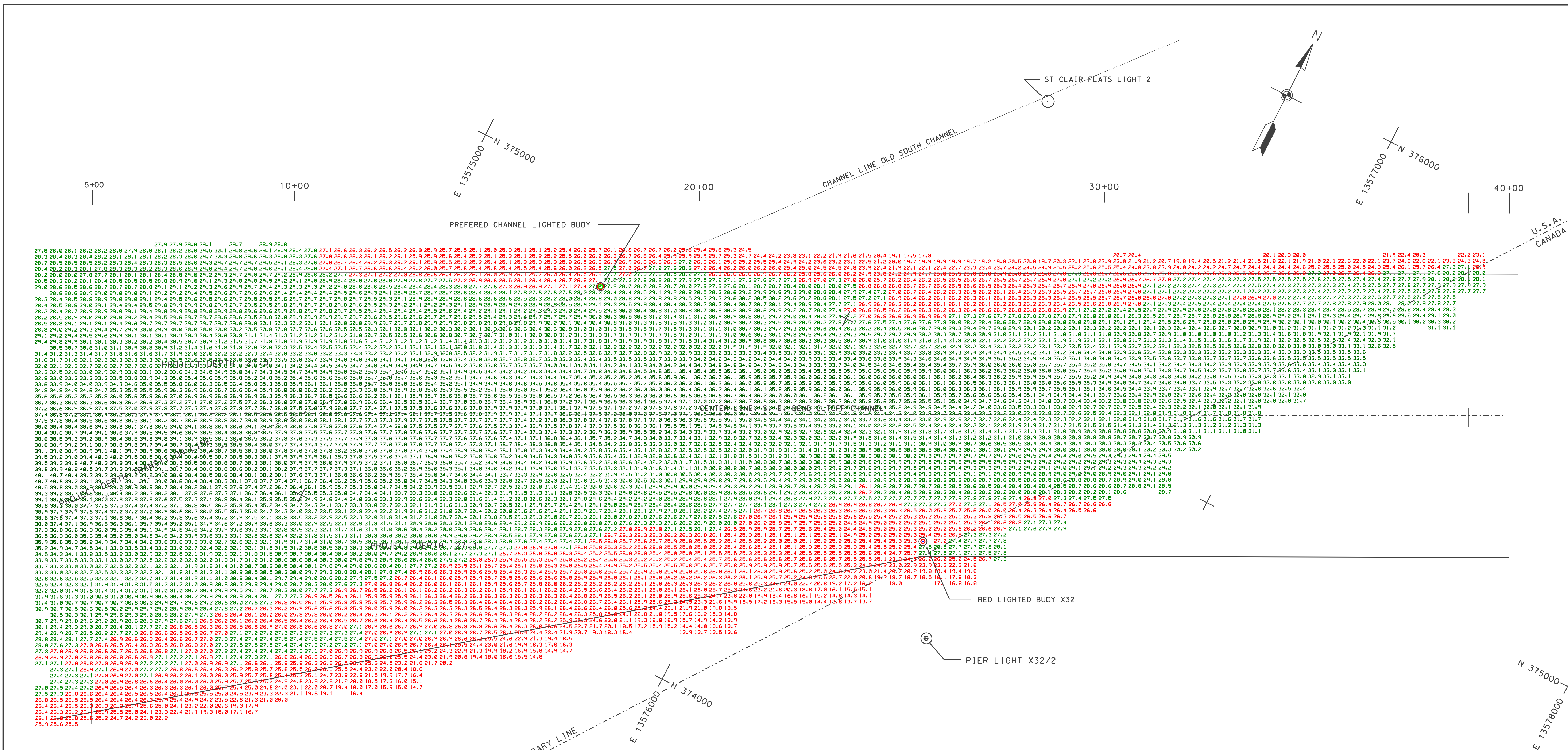


**STURGEON BAY  
WISCONSIN**

Scale 1:10,000  
SOUNDINGS IN FEET



**NOT FOR NAVIGATIONAL USE**



L.W.D. 572.3'

**LEGEND**

THE INFORMATION DEPICTED ON THIS MAP IS REFLECTIVE OF THE DATA OBTAINED ON THE DATES INDICATED AND CAN ONLY BE CONSIDERED AS INDICATING THE GENERAL CONDITIONS AT THE TIME.

LOW WATER DATUM  
ELEVATIONS AND PROJECT DEPTHS ARE REFERRED TO INTERNATIONAL GREAT LAKES DATUM, (1985)

GRID COORDINATES  
GRIDS SHOWN ARE BASED ON NATIONAL GEODETIC SURVEY PROJECTION TABLES, STATE OF MICHIGAN, SOUTH ZONE (2113), LAMBERT PROJECTION, 1983 NORTH AMERICAN DATUM.

**DIRECTIONS**

ALL DIRECTIONS ARE GRID AZIMUTHS REFERRED TO NORTH ZERO.

PROJECT DEPTHS ARE AS INDICATED ABOVE.

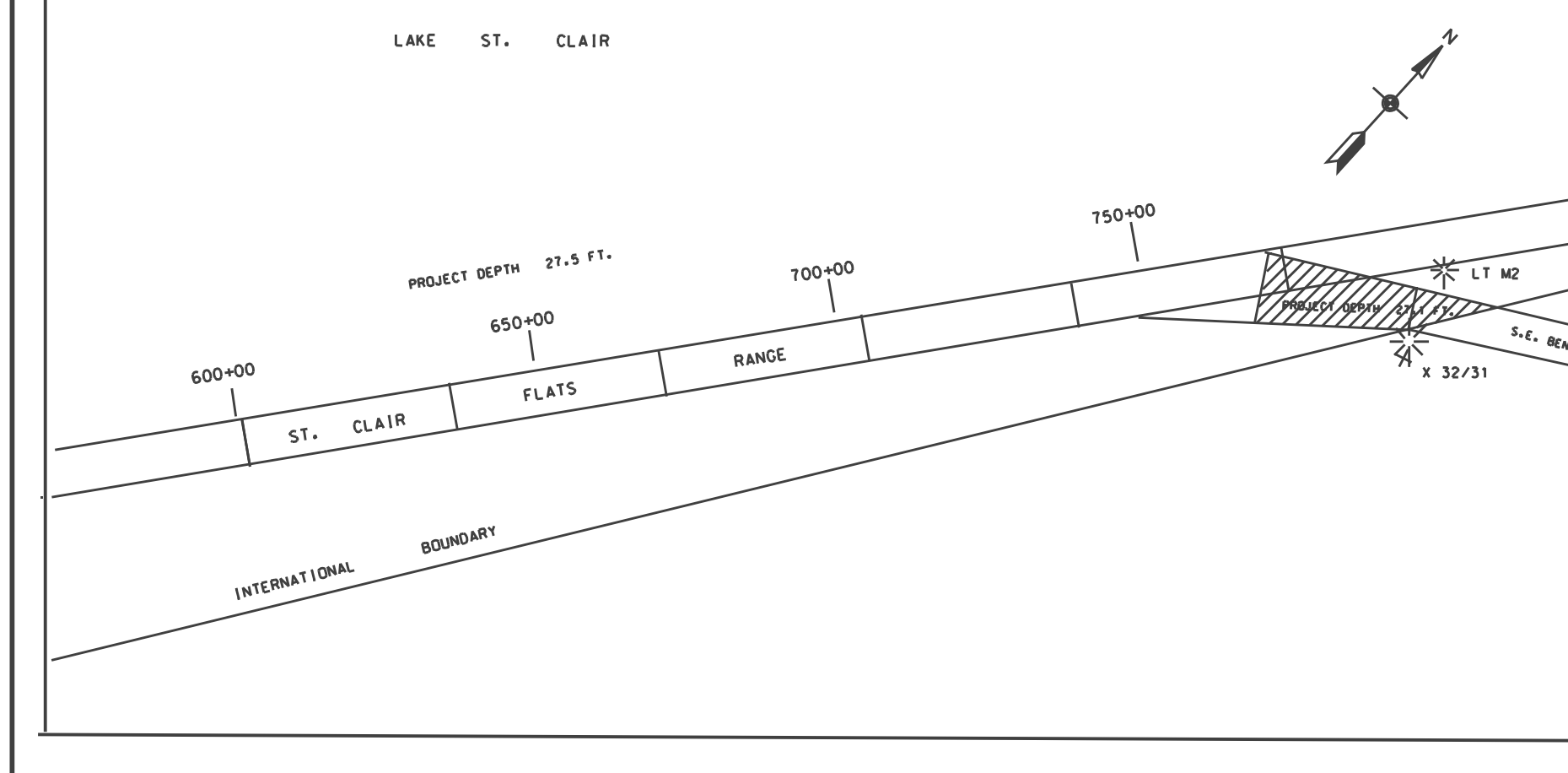
THE AUTOMATED ELECTRONIC SURVEY WAS CONDUCTED BY JAMES BYRNE, ENCLAB, ABOARD THE USACE SURVEY VESSEL WHEELER

**AUTOMATED EQUIPMENT USED**

POSITIONING: TSS POS-MV  
DATA PROCESSOR: DELL 330 PC  
SOFTWARE: HYDRA  
PLOTTER: ENCAD, CADJET 2  
SONIC SOUNDER: RESON SEABAT 8125

**NOTES**

- GAGES USED WERE OBTAINED ELECTRONICALLY FROM NOAA GAGE AT ST. CLAIR SHORES, MICHIGAN, VIA THE INTERNET.
- POSITIONS WERE DETERMINED BY GPS REFERENCE BEACON FREQUENCY 319 KHZ @ 200 FPS.
- DEPTH MEASURED USING RESON SEABAT 8125 ULTRA HIGH RESOLUTION FOCUSED MULTIBEAM SOUNDER SYSTEM AND GOOD DIGIBAR PRO DR200 VELOCITY PROFILER.
- EDITED MULTIBEAM SOUNDINGS WERE SORTED INTO A 37 FT. BY 15 FT. MATRIX; THE AVERAGE OF THE SOUNDINGS LOCATED IN THE CELL CENTER.



NO.	DATE	REVISION	BY

**U.S. ARMY ENGINEER DISTRICT, DETROIT**  
**CORPS OF ENGINEERS**  
**DETROIT, MICHIGAN**

DESIGNED BY: DETROIT AREA OFFICE 15 OCTOBER 2007

DRAWN BY: J.B.

CHECKED BY:

REVIEWED BY:

**LAKE ST. CLAIR, MICHIGAN**  
**TRANSITION TO CUTOFF CHANNEL**  
**CS 5+00 TO CS 39+00**  
**MULTI-BEAM SWEEP SURVEY**  
**AVERAGE DEPTH PLOT**

APPROVAL RECOMMENDED: P.E. DATE

CHIEF, PROJ./OPNS-SECT CHIEF, OPS BRANCH

APPROVED: P.E. DATE

CHIEF, CONST - OPNS DIVISION

SCALE AS SHOWN  
DRAWING NUMBER: 1sc23s1007.dgn  
SHEET 23 OF 23