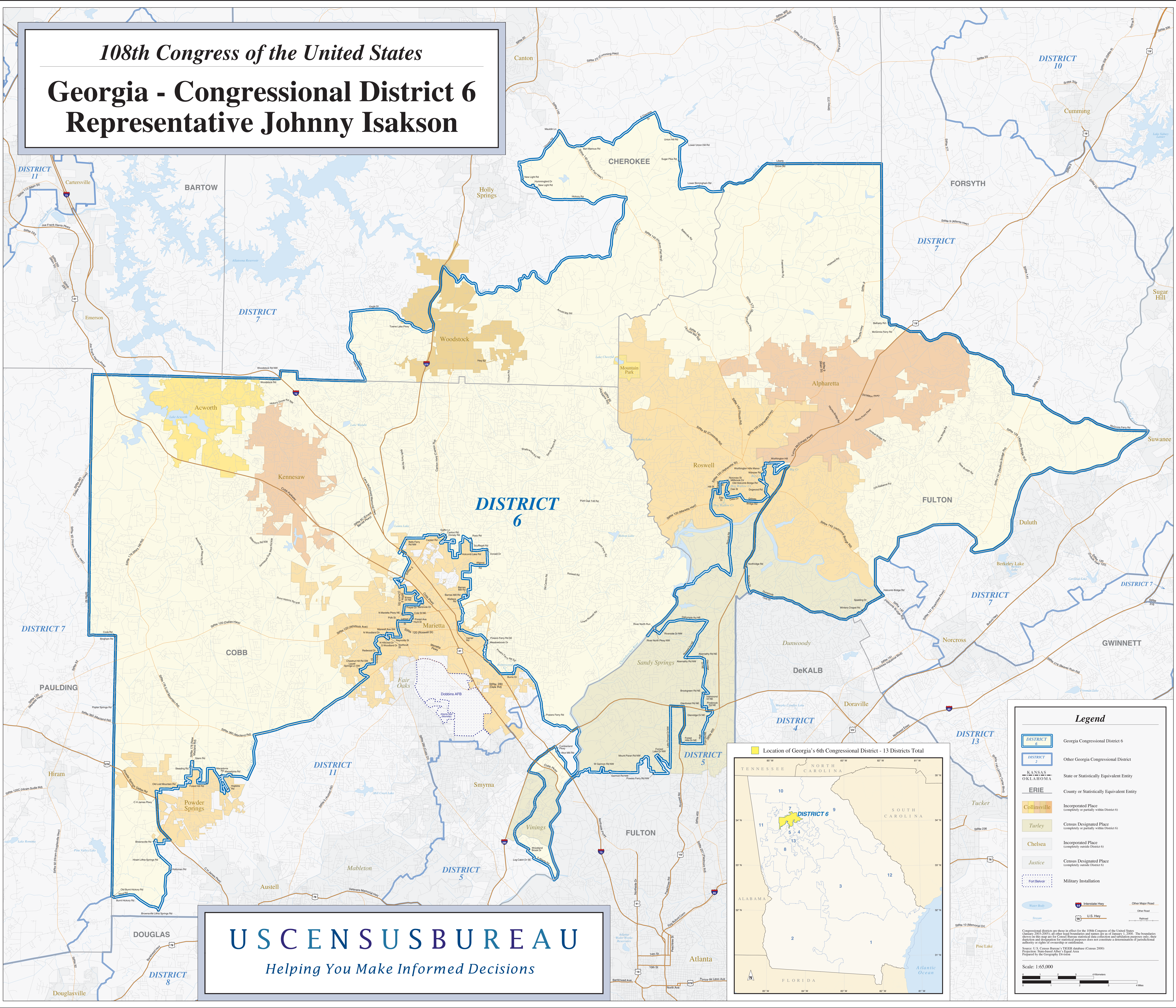


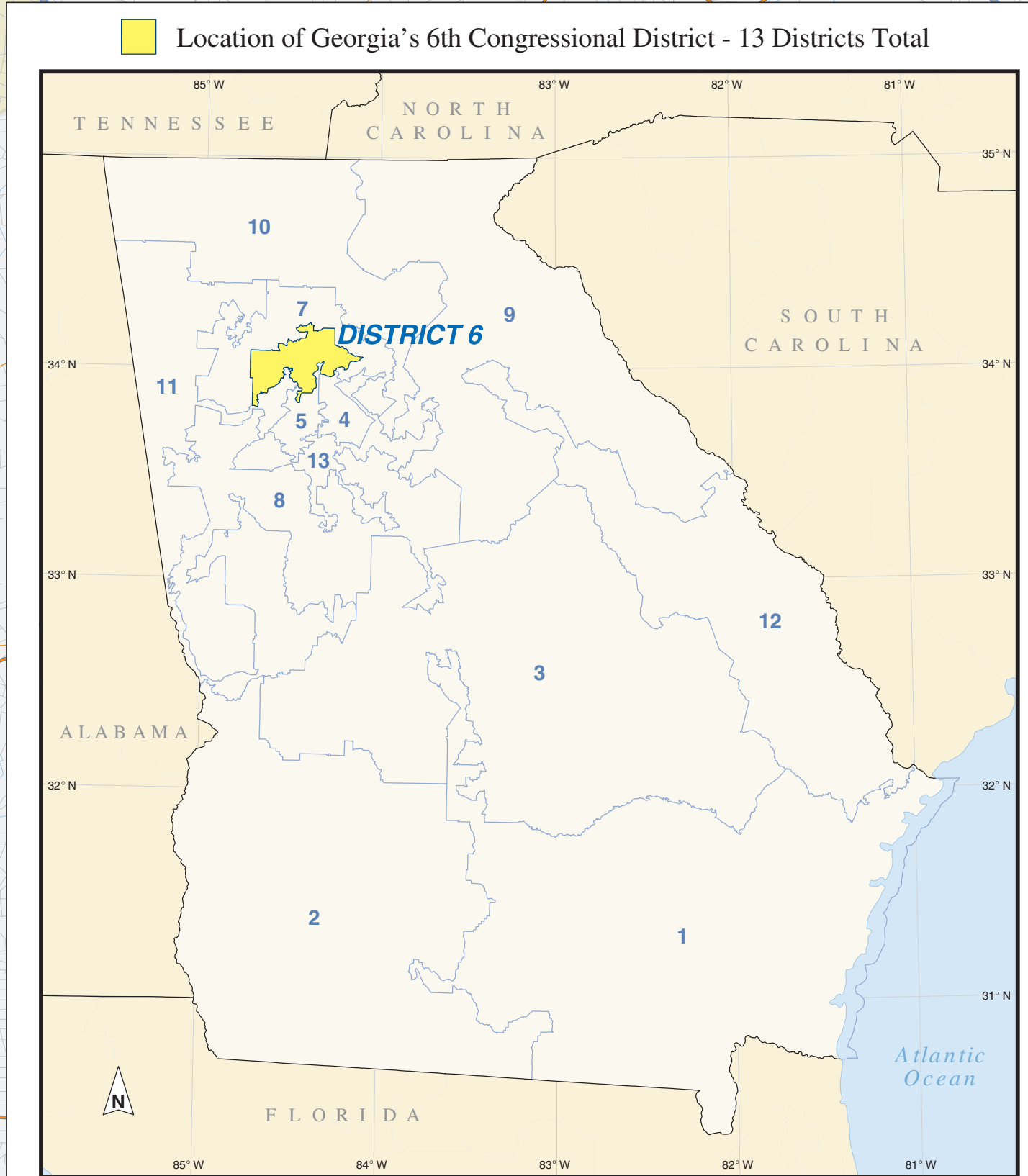
108th Congress of the United States

Georgia - Congressional District 6

Representative Johnny Isakson



USCENSUS BUREAU
Helping You Make Informed Decisions



Legend

- DISTRICT 6 Georgia Congressional District 6
- DISTRICT 2 Other Georgia Congressional District
- KANSAS, OKLAHOMA State or Statistically Equivalent Entity
- ERIE County or Statistically Equivalent Entity
- Collinsville Incorporated Place (completely or partially within District 6)
- Turley Census Designated Place (completely or partially within District 6)
- Chelsea Incorporated Place (completely outside District 6)
- Justice Census Designated Place (completely outside District 6)
- Fort Belvoir Military Installation
- Water Body Water Body
- Interstate Hwy Interstate Hwy
- U.S. Hwy U.S. Hwy
- Other Major Road Other Major Road
- Other Road Other Road
- Railroad Railroad

Congressional districts are shown in effect for the 108th Congress of the United States (January 2005) and are based on the 2000 Census. The boundaries shown on this map are for Census Bureau statistical data collection and tabulation purposes only; they do not constitute a determination of jurisdictional authority or rights of ownership or entitlement.

Source: U.S. Census Bureau, 2000 Census of Population and Housing, Census 2000

Prepared by the Geography Division

Scale: 1:65,000