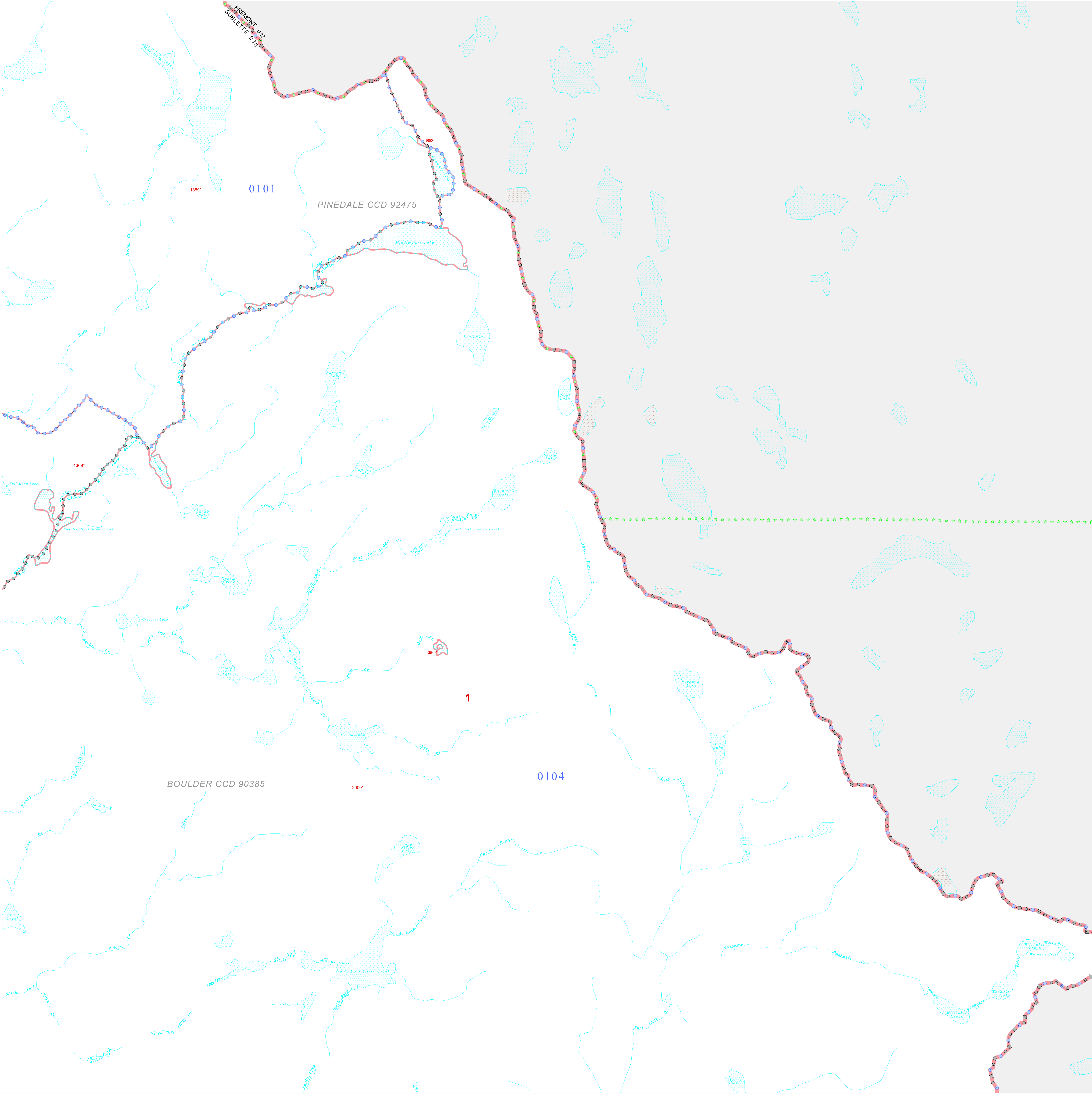


P. L. 94-171 COUNTY BLOCK MAP (CENSUS 2000)

42 955223N  
109 461639W

42 955223N  
109 213770W



**GEOGRAPHIC AREAS LEGEND**

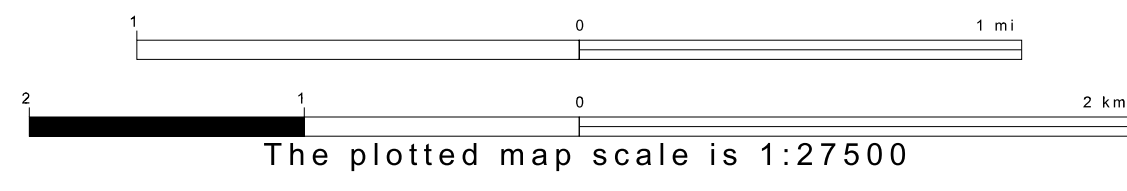
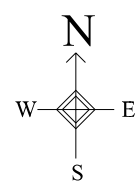
SYMBOL	NAME STYLE
*****	INTERNATIONAL
*****	AIR (FEDERAL)
*****	Trust Land
*****	STATE
*****	COUNTY
*****	CENSUS COUNTY DIV.
*****	Incorporated Place
*****	Census Designated Place
*****	Corporate Offset Boundary
*****	Voting District
*****	Census Tract
*****	BLOCK

Military     Inset     Out Area

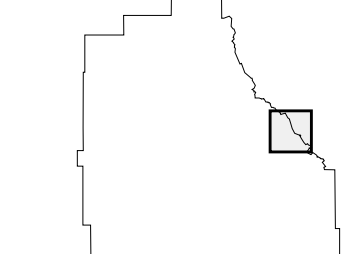
Abbreviation Reference: AIR = American Indian Reservation; Trust Land = Off-Reservation Trust Land  
 1 A "\*" following a VTD code indicates an actual voting district. Its absence indicates that the VTD is a pseudo-voting district or no information is available as to its status.  
 2 A "\*" following a block number indicates that the block number is repeated elsewhere on the block.

42 772878N  
109 461639W

42 772878N  
109 213770W



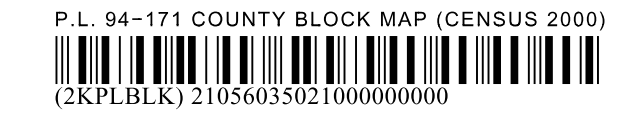
Sheet Location within County



Key to Adjacent Sheets

14	15
20	21 22
27	28 29

ST: Wyoming (56)  
 COU: Sublette (035)  
 SHEET 21 OF 43 PARENT SHEETS



All legal boundaries and names are as of January 1, 2000. The boundaries shown on this map are for Census Bureau statistical data collection and tabulation purposes only; their depiction and designation for statistical purposes does not constitute a determination of jurisdictional authority or rights of ownership or entitlement. U.S. DEPARTMENT OF COMMERCE Economics and Statistics Administration U.S. Census Bureau