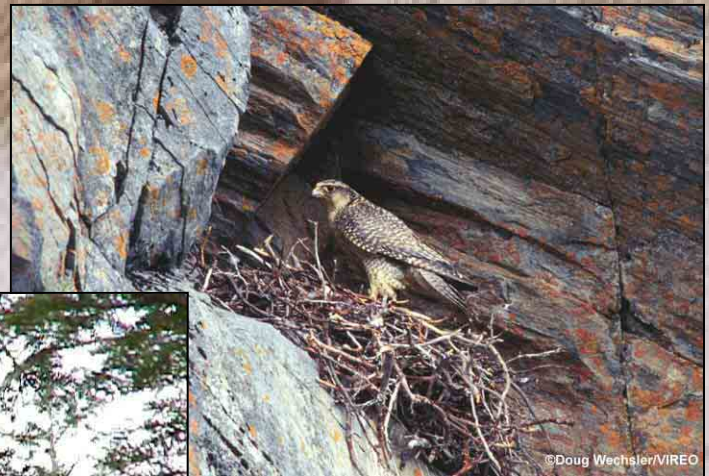


Current Projects

USFWS Raptor Project



Bald Eagle Surveys

- Seymour Canal

Long-term site – 30 years

- Averages since 1989, $n = 72$ nests, 37% active, 0.88 yg/active nest

- Lynn Canal

Cooperative project with ADOT, 1997-2003

Surveying proposed R-O-W

$n = 83(e)/53(w)$, 40/42% active, 0.55/0.64 yg/active nest

- Other nest surveys

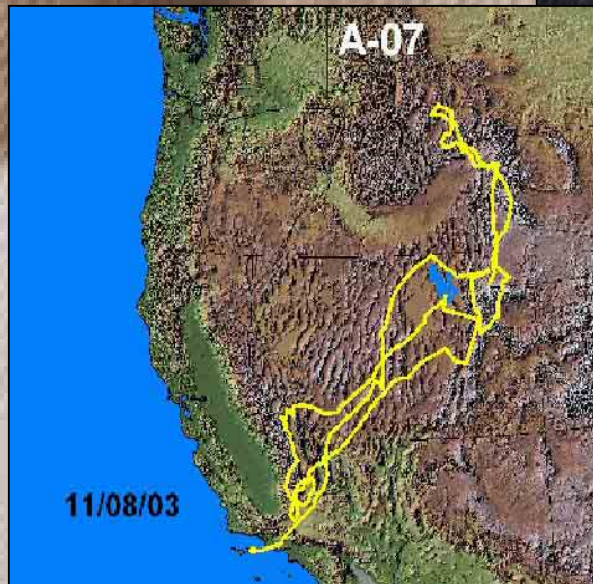


Bald Eagle Translocation

- **Re-introduction to California Channel Islands**

5 year project, initiated 2001

Eaglets released on Catalina and Santa Cruz



Cavity Nesting Owls

- **Western Screech Owl**
Identified as a species of concern
in Land Bird Conservation Plan



Cavity Nesting Owls

- Western Screech Owl
- **Queen Charlotte Saw-whet Owl**

Endemic to Queen Charlotte Islands

May occur in southeastern Alaska



Photo: R. Krahe

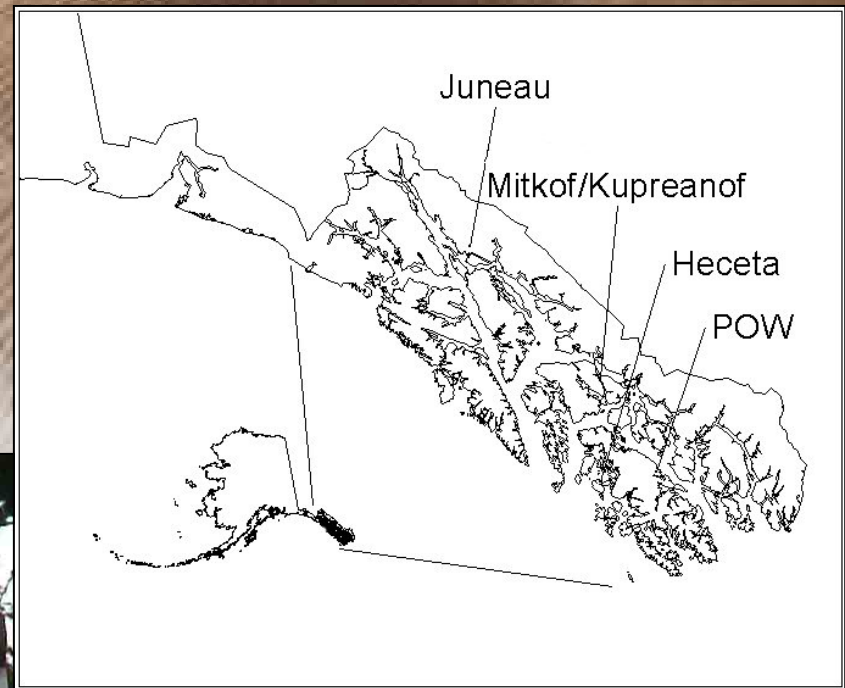
Cavity Nesting Owls

- Western Screech Owl
- Queen Charlotte Saw-whet Owl
- **Northern Pygmy Owl**
Poorly known species studied
incidental to others



Current Owl Studies

- Sporadic spring call surveys
- Nest box study
 - Heceta (48 boxes)
 - POW (54 boxes)
 - Mitkof/Kupreanof (57 boxes)
 - Juneau (20 boxes, more to be added)



Gyr Falcon Studies

- Initial field work

Cooperative work between
FWS, BLM, ADF&G

- Workshop

Draft plan for 2004 to be
circulated by the end of
December



Overall future direction for raptor work in Alaska

“The future just isn’t what it used to be”

