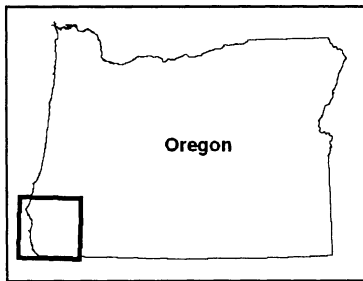
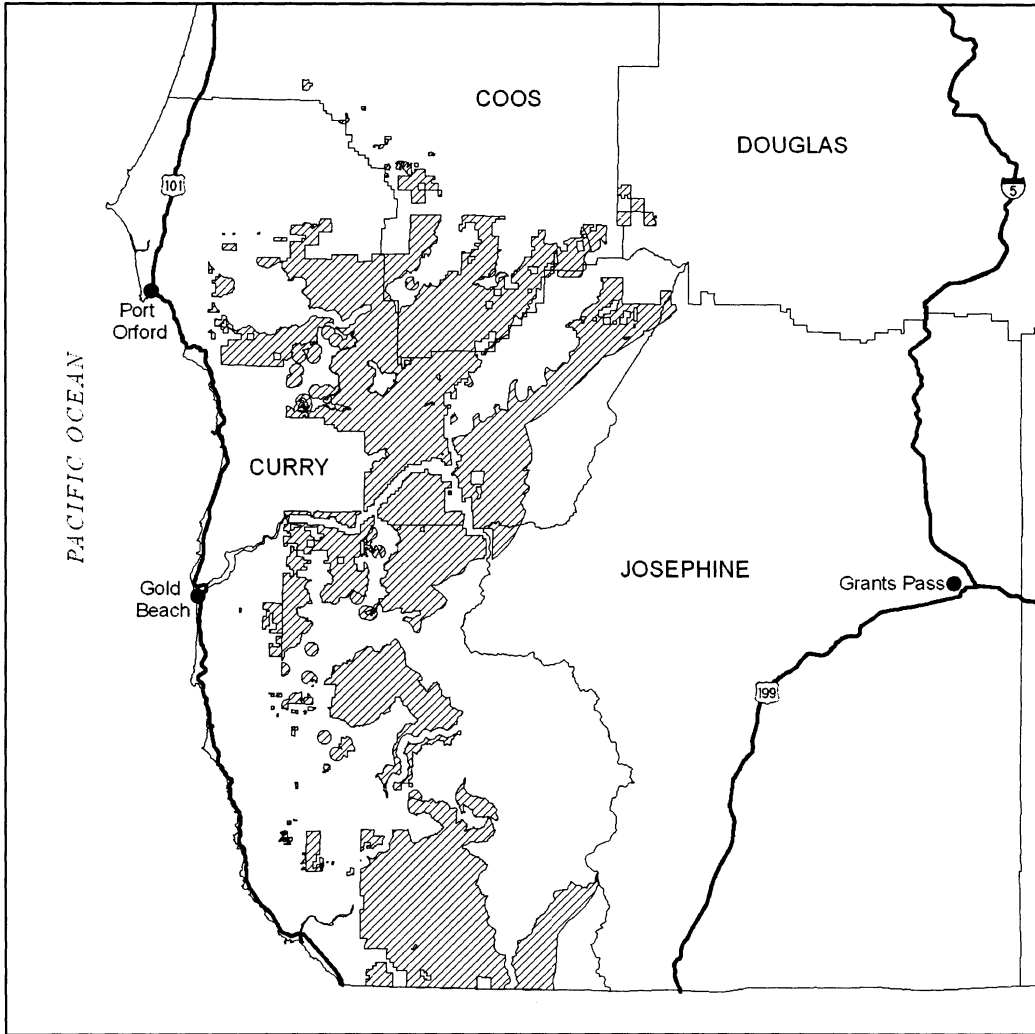


(14) Southwest Oregon Unit, Oregon. Coos, Curry, Douglas, and Josephine counties, Oregon. From USGS 1:24,000 scale quadrangles: Agness, Barklow Mountain, Big Craggies, Biscuit Hill, Bosley Butte, Brandy Peak, Brookings, Brushy Bald Mountain, Buckskin Peak, Bunker Creek, Calf Ranch Mountain,


Carpenterville, Chetco Peak, China Flat, Collier Butte, Dement Creek, Dutchman Butte, Eden Valley, Father Mountain, Fourth of July Creek, High Divide, High Plateau Mountain, Horse Sign Butte, Illahe, Kelsey Peak, Marial, Mount Bolivar, Mount Butler, Mount Emily, Ophir Mountain, Port Orford, Powers,

Quail Prairie Mountain, Quosatana Butte, Signal Buttes, Silver Peak, Sixes, Smith River, Soldier Camp Mountain, Sundown Mountain. Note: Map of Southwest Oregon Unit (Map 10) follows:

Map 10. Southwest Oregon Proposed Critical Habitat Unit, Oregon




Legend

 Marbled Murrelet Proposed 4(b)(2) Exclusion

0 5 10 15 20 25 30 35 Kilometers

0 4 8 12 16 20 24 28 Miles



(15) Del Norte/Northern Humboldt County Unit, California. Del Norte, Siskiyou, and Humboldt counties, California. From USGS 1:24,000 scale quadrangles: Bark Shanty Gulch, Blue Creek Mountain, Board Camp Mountain, Broken Rib Mountain, Cant Hook Mountain, Childs Hill, Chimney Rock, Devils Punchbowl, Dillon Mountain, Fish Lake, Gasquet, Grouse Mountain, Hennessy Peak, High Divide, High Plateau Mountain, Hiouchi, Hupa Mountain, Hurdygurdy Butte, Iaqua Buttes, Johnsons, Klamath Glen, Lonesome Ridge, Lord-Ellis Summit, Mad River Buttes, Orleans, Requa, Shelly Creek Ridge, Ship Mountain, Sims Mountain, Summit Valley, Weitchpec, and Willow Creek.

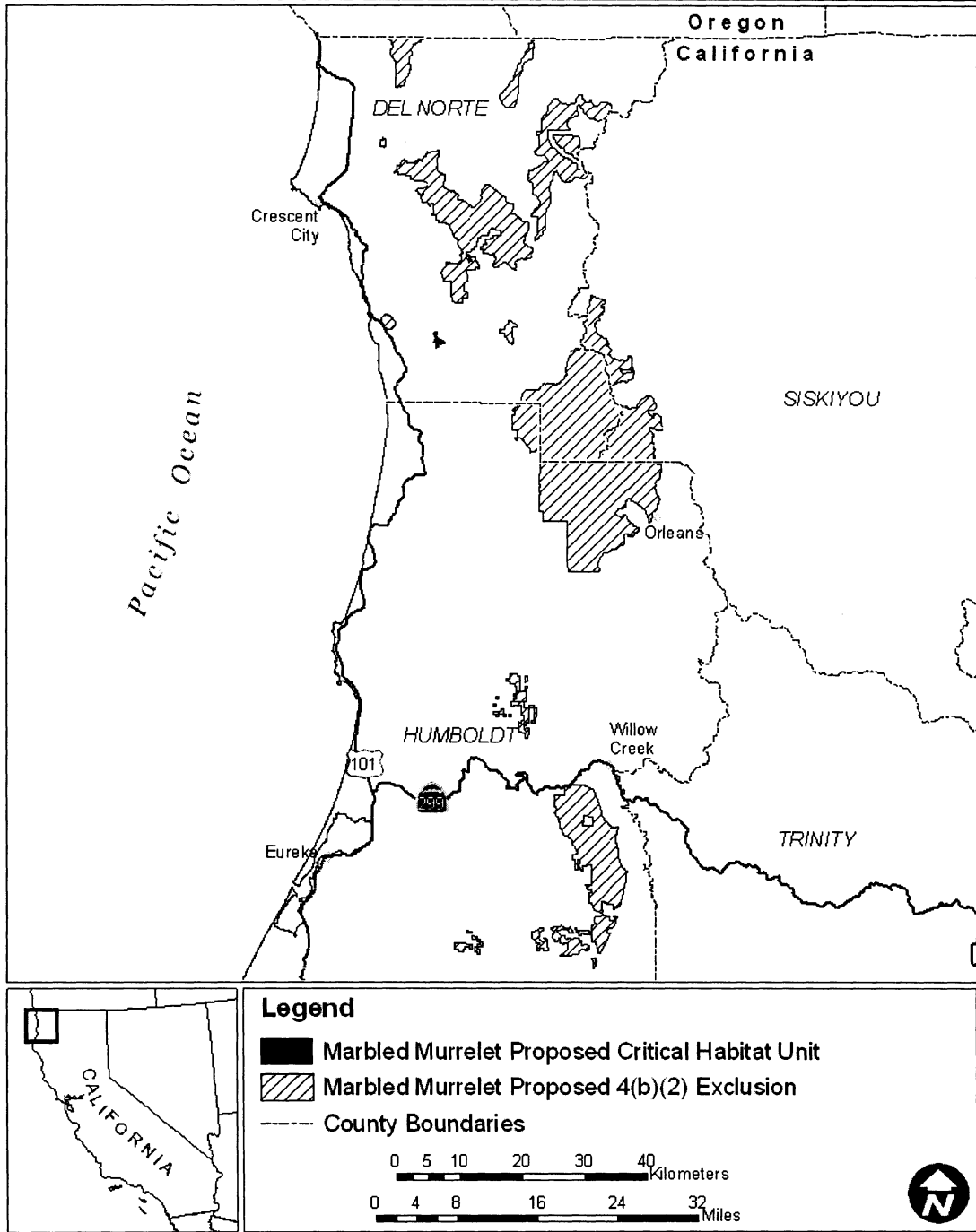
(i) Land bounded by the following UTM Zone 10, NAD83 coordinates (E,N): 419614, 4601273; 419709, 4601147; 419754, 4601055; 419755, 4600985; 419846, 4600998; 419972, 4600992; 420015, 4600937; 420114, 4600899; 420237, 4600819; 420369, 4600772; 420465, 4600640; 420476, 4600549; 420472, 4600447; 420449, 4600374; 420361, 4600247; 420264, 4600209; 420144, 4600227; 420079, 4600217; 420029, 4600177; 419974, 4600148; 419919, 4600119; 419825, 4600094; 419709, 4600166; 419604, 4600227; 419524, 4600208; 419546, 4600110; 419539, 4600022; 419496,

4599906; 419430, 4599637; 419373, 4599622; 419293, 4599602; 419173, 4599534; 419140, 4599438; 419072, 4599385; 418969, 4599417; 418865, 4599526; 418938, 4599680; 418930, 4599740; 418984, 4599793; 418973, 4599943; 419023, 4599985; 418941, 4600060; 418912, 4600113; 418845, 4600153; 418751, 4600196; 418696, 4600265; 418739, 4600309; 418852, 4600315; 418837, 4600388; 418720, 4600435; 418638, 4600452; 418601, 4600507; 418593, 4600566; 418604, 4600775; 418541, 4600798; 418555, 4600856; 418599, 4600913; 418708, 4600992; 418768, 4601040; 418814, 4601076; 418813, 4601194; 418722, 4601190; 418672, 4601267; 418696, 4601350; 418690, 4601433; 418668, 4601499; 418619, 4601572; 418629, 4601643; 418668, 4601696; 418748, 4601732; 418562, 4601858; 418543, 4601912; 418564, 4602001; 418605, 4602056; 418683, 4602139; 418754, 4602208; 418788, 4602256; 418818, 4602313; 418930, 4602380; 419036, 4602406; 419151, 4602366; 419263, 4602328; 419233, 4602259; 419177, 4602166; 419201, 4602066; 419244, 4602004; 419230, 4601947; 419227, 4601795; 419057, 4601609; 419065, 4601530; 419211, 4601491; 419337, 4601430; 419515, 4601362; 419614, 4601273;

(ii) Land bounded by the following UTM Zone 10, NAD83 coordinates (E,N): 411443, 4602664; 411303, 4602652; 411163, 4602664; 411046, 4602706; 410944, 4602743; 410888, 4602830; 410726, 4602901; 410570, 4602954; 410547, 4603069; 410402, 4603110; 410463, 4603225; 410511, 4603317; 410383, 4603395; 410345, 4603528; 410307, 4603652; 410207, 4603741; 410229, 4603919; 410159, 4604016; 410171, 4604156; 410207, 4604292; 410267, 4604419; 410217, 4604532; 410277, 4604659; 410357, 4604774; 410456, 4604873; 410571, 4604953; 410698, 4605012; 410834, 4605049; 410973, 4605061; 411113, 4605049; 411249, 4605012; 411376, 4604953; 411491, 4604873; 411590, 4604773; 411670, 4604658; 411811, 4604603; 411910, 4604503; 411990, 4604388; 412050, 4604261; 412137, 4604207; 412270, 4604058; 412330, 4603931; 412366, 4603796; 412378, 4603656; 412366, 4603516; 412329, 4603381; 412270, 4603254; 412190, 4603139; 412000, 4603054; 411920, 4602939; 411800, 4602895; 411706, 4602759; 411578, 4602700; 411443, 4602664;

(iii) Note: Map of Del Norte/Northern Humboldt County Unit (Map 11) follows:

Map 11. Del Norte/Northern Humboldt County Proposed Critical Habitat Unit, California



(16) Southern Humboldt County Unit, California. Humboldt County, California. From USGS 1:24,000 scale quadrangles: Bull Creek, Ettersburg, Garberville, Hydesville, Iaqua Buttes, McWhinney Creek, Miranda, Myers Flat, Owl Creek, Redcrest, Scotia, and Weott.

(i) Land bounded by the following UTM Zone 10, NAD83 coordinates (E,N): 418955, 4481893; 418976, 4481781; 418880, 4481785; 418855, 4481617; 418845, 4481422; 418725, 4481292; 418672, 4481226; 418614, 4481167; 418551, 4481121; 418492, 4481081; 418452, 4481043; 418425, 4480971; 418337, 4480967; 417888, 4481482; 417959, 4481512; 418018, 4481543; 418076, 4481570; 418121, 4481613; 418150, 4481660; 418289, 4481888; 418314, 4481944; 418344, 4481998; 418414, 4482053; 418491, 4482077; 418570, 4482080; 418650, 4482063; 418719, 4482053; 418781, 4482044; 418847, 4482015; 418919, 4481955; 418955, 4481893;

(ii) Land bounded by the following UTM Zone 10, NAD83 coordinates (E,N): 422100, 4482717; 422124, 4482238; 422304, 4482268; 422422, 4482295; 423021, 4482425; 423381, 4482507; 423592, 4482475; 423749, 4482382; 423844, 4482338; 423882, 4482231; 424500, 4481760; 424493, 4481416; 424175, 4481586; 423922, 4481777; 423916, 4481520; 423901, 4480854; 422986, 4480884; 422734, 4480908; 422683, 4480920; 422626, 4480915; 422566, 4480896; 422474, 4480915; 422371, 4480953; 422291, 4480971; 422185, 4480932; 422114, 4480920; 422010, 4480903; 421929, 4480892; 421829, 4480866; 421732, 4480863; 421665, 4480814; 421588, 4480845; 421537, 4480913; 421505, 4480951; 421433, 4481191; 421336, 4481219; 421261, 4481216; 421203, 4481173; 421143, 4481164; 421054, 4481062; 420868, 4480936; 420783, 4480933; 420664, 4480942; 420595, 4480922; 420503, 4480899; 420420, 4480901; 420386, 4481036; 420380, 4481095; 420396, 4481187; 420389, 4481269; 420370, 4481334; 420333, 4481412; 420335, 4481535; 420337, 4481597; 420379, 4481675; 420435, 4481753; 419585, 4481905; 419660, 4482319; 420022, 4482609; 420443, 4482626; 420562, 4482619; 421384, 4482608; 421426, 4483393; 421502, 4483395; 421549, 4483403; 421597, 4483403; 421626, 4483330; 421690, 4483283; 421742, 4483226; 421834, 4483192; 421873, 4483157; 421916, 4483093; 421986, 4483038; 421974, 4482944; 422016, 4482884; 422037, 4482818; 422072, 4482771; 422100, 4482717;

(iii) Land bounded by the following UTM Zone 10, NAD83 coordinates (E,N): 421212, 4491071; 421389, 4490882; 421557, 4491066; 422042, 4491037; 422086, 4490732; 422120, 4490500; 422638, 4490499; 422618, 4490138; 422116, 4490120; 422101, 4489625; 422085, 4488901; 421546, 4488919; 420468, 4488479; 420142, 4488865; 420106, 4489051; 420592, 4489744; 420644, 4490007; 420771, 4490064; 420696, 4490358; 420848, 4490940; 421069, 4491085; 421212, 4491071;

(iv) Land bounded by the following UTM Zone 10, NAD83 coordinates (E,N): 416595, 4492164; 416620, 4491340; 413541, 4490437; 412936, 4490263; 412834, 4490331; 412798, 4490388; 412700, 4490450; 412599, 4490478; 412510, 4490450; 412427, 4490440; 412361, 4490455; 412250, 4490481; 412198, 4490394; 411786, 4490933; 411540, 4491466; 411538, 4491955; 411534, 4493086; 412112, 4493135; 412290, 4493100; 412942, 4492823; 413190, 4492461; 413441, 4492384; 413531, 4492356; 413599, 4492427; 413691, 4492409; 413722, 4492504; 413808, 4492534; 413917, 4492509; 413948, 4492461; 413942, 4492308; 413956, 4492215; 413887, 4492130; 413927, 4492036; 413965, 4491912; 413967, 4491768; 413917, 4491627; 413924, 4491567; 414194, 4491845; 414240, 4491947; 414310, 4491954; 414488, 4491927; 414408, 4492150; 414413, 4492223; 414465, 4492317; 414526, 4492330; 414617, 4492305; 414669, 4492265; 414727, 4492168; 414808, 4492068; 414879, 4492033; 414966, 4492084; 415089, 4492171; 415199, 4492199; 415269, 4492243; 415359, 4492282; 415910, 4492564; 415960, 4492624; 416007, 4492815; 416117, 4492924; 416264, 4493015; 416360, 4493056; 416433, 4493149; 416529, 4493023; 416472, 4492943; 416455, 4492898; 416467, 4492847; 416502, 4492816; 416555, 4492795; 416676, 4492743; 416721, 4492664; 416795, 4492444; 416595, 4492164;

(v) Land bounded by the following UTM Zone 10, NAD83 coordinates (E,N): 419536, 4497885; 419627, 4497885; 419870, 4497885; 420278, 4497866; 420266, 4497651; 420258, 4497500; 420252, 4497399; 420233, 4497068; 420545, 4497069; 420644, 4497069; 420642, 4496998; 420612, 4496861; 420543, 4496798; 420468, 4496762; 420412, 4496747; 420366, 4496732; 420330, 4496678; 420224, 4496663; 420187, 4496601; 420111, 4496564; 420049, 4496554; 420037, 4496497; 420028, 4496441; 420013, 4496393; 420017, 4496335; 419982, 4496256; 419901, 4496199; 419828,

4496210; 419774, 4496266; 419698, 4496330; 419592, 4496328; 419525, 4496357; 419492, 4496428; 419492, 4496502; 419405, 4496575; 419372, 4496642; 419365, 4496688; 419361, 4496733; 419334, 4496766; 419293, 4496795; 419225, 4496829; 419160, 4496857; 419095, 4496881; 419012, 4496916; 418953, 4496894; 418908, 4496879; 418864, 4496875; 418799, 4496871; 418727, 4496885; 418669, 4496856; 418602, 4496818; 418549, 4496813; 418490, 4496815; 418448, 4496785; 418426, 4496739; 418419, 4496674; 418416, 4496623; 418392, 4496552; 418382, 4496475; 418404, 4496410; 418403, 4496360; 418390, 4496312; 417528, 4496343; 416526, 4495967; 414911, 4496782; 414884, 4496995; 415118, 4497334; 416149, 4497231; 416526, 4496747; 417063, 4496755; 417434, 4497020; 417408, 4497400; 417580, 4497577; 417914, 4497565; 418376, 4497388; 418739, 4497394; 418897, 4497663; 419135, 4497836; 419139, 4497899; 419161, 4497942; 419203, 4497969; 419290, 4497976; 419365, 4497975; 419461, 4497973; 419538, 4497965; 419536, 4497885;

(vi) Land bounded by the following UTM Zone 10, NAD83 coordinates (E,N): 420485, 4503921; 420464, 4503516; 420259, 4503513; 420097, 4503511; 420177, 4502917; 420192, 4502811; 420261, 4502297; 420383, 4502293; 420393, 4502133; 420498, 4501991; 420599, 4501903; 420685, 4501875; 420753, 4501829; 420771, 4501774; 420774, 4501707; 420778, 4501609; 420785, 4501434; 420799, 4501043; 420782, 4500999; 420731, 4500964; 420651, 4500960; 420417, 4500965; 420400, 4500679; 420395, 4500601; 419871, 4500619; 419778, 4501126; 418859, 4501160; 418832, 4501225; 418772, 4501249; 418725, 4501274; 418665, 4501326; 418601, 4501350; 418548, 4501374; 418484, 4501437; 418410, 4501449; 418356, 4501481; 418314, 4501539; 418248, 4501603; 418180, 4501676; 418133, 4501740; 418085, 4501773; 418014, 4501844; 418101, 4501988; 418090, 4502265; 418216, 4502354; 418252, 4502688; 418410, 4502721; 418587, 4502533; 418806, 4502813; 418019, 4503653; 418037, 4503908; 418123, 4503886; 418176, 4503888; 418278, 4503871; 418487, 4503674; 418493, 4503616; 418512, 4503554; 418687, 4503553; 418738, 4503126; 418947, 4503128; 418897, 4503551; 419318, 4503542; 419695, 4503935; 420336, 4503923; 420485, 4503921;

(vii) Land bounded by the following UTM Zone 10, NAD83 coordinates (E,N): 412789, 4504410; 412670, 4504207; 412552, 4503913; 412505,

4503696; 412340, 4503502; 412288, 4503466; 412221, 4503380; 412151, 4503250; 412063, 4503184; 412009, 4503164; 411955, 4503126; 411909, 4503086; 411848, 4503089; 411802, 4503105; 411771, 4503135; 411729, 4503167; 411660, 4503208; 411590, 4503256; 411518, 4503296; 411473, 4503348; 411441, 4503422; 411393, 4503474; 411356, 4503497; 411306, 4503528; 411254, 4503562; 411197, 4503598; 411136, 4503627; 411088, 4503647; 411016, 4503686; 410942, 4503671; 410871, 4503688; 410821, 4503724; 410752, 4503785; 410706, 4503825; 410656, 4503842; 410615, 4503880; 410575, 4503964; 410553, 4504024; 410518, 4504075; 410471, 4504108; 410428, 4504134; 410372, 4504143; 410307, 4504183; 410279, 4504240; 410279, 4504290; 410311, 4504347; 410374, 4504378; 410446, 4504380; 410501, 4504385; 410567, 4504394; 410627, 4504437; 410669, 4504450; 410732, 4504477; 410845, 4504483; 410905, 4504435; 410953, 4504407; 411016, 4504434; 411076, 4504419; 411121, 4504352; 411195, 4504319; 411253, 4504329; 411299, 4504356; 411351, 4504352; 411425, 4504357; 411513, 4504316; 411659, 4504411; 412411, 4504370; 412520, 4504553; 412660, 4504610; 412789, 4504410;

(viii) Land bounded by the following UTM Zone 10, NAD83 coordinates (E,N): 403246, 4505264; 403317, 4505245; 403356, 4505263; 403428, 4505286; 403500, 4505307; 403522, 4505250; 403626, 4505229; 403785, 4505191; 404762, 4504850; 405216, 4504101; 405573, 4503970; 406133, 4503689; 406298, 4503671; 406361, 4503481; 407232, 4503199; 407294, 4503109; 407624, 4503310; 408033, 4503452; 408383, 4503257; 409062, 4503106; 409430, 4502905; 409682, 4502464; 410064, 4502168; 410319, 4501930; 410451, 4501686; 410939, 4501227; 410976, 4500862; 411246, 4500718; 411396, 4500526; 411778, 4500328; 411945, 4500219; 412059, 4500227; 412946, 4500468; 412992, 4500490; 413091, 4500478; 413195, 4500423; 413288, 4500396; 413360, 4500304; 413447, 4500298; 413486, 4500273; 413525, 4500224; 413545, 4500177; 413558, 4500060; 413615, 4500033; 413677, 4499991; 413733, 4499940; 413762, 4499890; 413777, 4499831; 413788, 4499782; 413804, 4499707; 413805, 4499625; 413789, 4499564; 413761, 4499505; 413709, 4499435; 413631, 4499341; 413571, 4499297; 413504, 4499277; 413426, 4499268; 413373, 4499247; 413369, 4499195; 413365, 4499122; 413371, 4499034; 413376, 4498965; 413364,

4498908; 413324, 4498849; 413362, 4498787; 413412, 4498766; 413459, 4498746; 413508, 4498698; 413540, 4498632; 413571, 4498597; 413607, 4498530; 413679, 4498471; 413711, 4498435; 413745, 4498394; 413806, 4498370; 413843, 4498339; 413867, 4498290; 413868, 4498245; 413838, 4498180; 413763, 4498103; 413725, 4498065; 413687, 4498002; 413639, 4497914; 413595, 4497873; 413532, 4497873; 413436, 4497808; 413293, 4497669; 413196, 4497589; 413037, 4497521; 412868, 4497493; 412658, 4497464; 412683, 4497231; 412491, 4497225; 412428, 4497231; 412373, 4497204; 412302, 4497128; 412232, 4496917; 412209, 4496875; 412047, 4496758; 411856, 4496230; 411827, 4496193; 411632, 4496045; 411609, 4495925; 411587, 4495854; 411371, 4495676; 411301, 4495657; 411283, 4495551; 411309, 4495500; 411381, 4495469; 411414, 4495374; 411347, 4495336; 411277, 4495310; 411239, 4495249; 411210, 4495145; 411281, 4495046; 411335, 4494995; 411372, 4494923; 411425, 4494896; 411480, 4494842; 411533, 4494727; 411506, 4494687; 411481, 4494648; 411423, 4494613; 411192, 4494556; 411016, 4494597; 410915, 4494670; 410754, 4494559; 410657, 4494553; 410664, 4494450; 410612, 4493971; 410564, 4493797; 410116, 4493363; 409963, 4493411; 409905, 4493500; 409842, 4494398; 409815, 4494450; 409805, 4494552; 409871, 4494643; 409888, 4494685; 409903, 4494792; 409904, 4494896; 409890, 4494962; 409865, 4495074; 409797, 4495172; 409795, 4495277; 409825, 4495350; 409749, 4495382; 409702, 4495458; 409706, 4495522; 409502, 4495658; 409473, 4495841; 409441, 4496167; 409340, 4496278; 409285, 4496506; 409096, 4496589; 409056, 4496718; 408831, 4496879; 408287, 4496799; 408243, 4496813; 407931, 4497063; 407744, 4497113; 407700, 4497152; 407691, 4497221; 407516, 4497380; 407381, 4497664; 407137, 4497685; 406911, 4497662; 406401, 4497797; 405980, 4497674; 405988, 4498015; 406003, 4498793; 406013, 4499604; 406859, 4499542; 406875, 4500352; 406847, 4501217; 406845, 4502033; 406776, 4502816; 406782, 4502877; 406631, 4502879; 406628, 4503111; 406144, 4503336; 406080, 4503486; 405265, 4503864; 405037, 4503889; 404683, 4504354; 404292, 4504696; 403187, 4505177; 403224, 4505334; 403246, 4505264; and excluding land bound by 4110376, 4499670; 411337, 4499381; 411585, 4499164; 411590, 4500200; 411521, 4500221; 411413, 4500254; 411265, 4500458; 411202, 4500545;

411168, 4500635; 410872, 4500806; 410839, 4501170; 410435, 4501532; 410241, 4501858; 409916, 4502109; 409616, 4502357; 409396, 4502792; 408989, 4503012; 408404, 4503109; 408215, 4503176; 408027, 4503281; 407808, 4503233; 407603, 4503051; 407335, 4502974; 407805, 4502560; 408217, 4502452; 408436, 4502267; 408740, 4501482; 409127, 4501305; 409261, 4501089; 409568, 4500687; 409740, 4500254; 410032, 4500224; 410376, 4499670;

(ix) Land bounded by the following UTM Zone 10, NAD83 coordinates (E,N): 403634, 4505355; 403622, 4505305; 403589, 4505338; 403634, 4505355;

(x) Land bounded by the following UTM Zone 10, NAD83 coordinates (E,N): 425763, 4461725; 425364, 4461722; 425351, 4461349; 425742, 4461330; 425763, 4461725; 426147, 4461709; 426140, 4461336; 426503, 4461341; 426503, 4461147; 426503, 4460609; 426887, 4460582; 426867, 4459808; 427691, 4459805; 428140, 4459795; 428142, 4459298; 428135, 4459227; 428357, 4459370; 428570, 4459369; 428564, 4459077; 428116, 4459033; 428080, 4458671; 428085, 4458425; 428487, 4458448; 428485, 4458375; 428473, 4458009; 428462, 4457598; 428688, 4457585; 428691, 4457139; 428882, 4457187; 428885, 4457595; 429004, 4457570; 429292, 4457567; 429287, 4456754; 429723, 4456730; 430528, 4456749; 430546, 4455898; 430552, 4455081; 430446, 4454678; 430385, 4454679; 430304, 4454783; 430160, 4454796; 430149, 4454680; 430011, 4454679; 429866, 4454423; 429801, 4454468; 429794, 4454314; 429746, 4454281; 429722, 4454181; 429692, 4453947; 429201, 4453959; 429141, 4454068; 429482, 4454686; 429734, 4454684; 429726, 4454879; 429834, 4454989; 429839, 4455483; 428885, 4455488; 428885, 4455829; 428607, 4455838; 428544, 4455912; 427670, 4455916; 427655, 4456390; 427247, 4456394; 427254, 4455918; 426865, 4455930; 426851, 4455541; 425615, 4455621; 425614, 4455210; 425160, 4455167; 425169, 4455604; 424829, 4455596; 424817, 4455165; 424042, 4455140; 424036, 4455768; 424034, 4455902; 422835, 4455925; 422830, 4456714; 422435, 4456708; 422433, 4457111; 421423, 4457031; 421234, 4457023; 420902, 4457009; 420852, 4456655; 420611, 4456639; 420230, 4456648; 419186, 4456671; 419222, 4457914; 417582, 4457874; 417221, 4457853; 417233, 4459548; 415977, 4459502; 415975, 4461233; 414226, 4461259; 414253, 4462105; 412681, 4462186; 412713, 4463847; 412717, 4464643; 412730,

4466291; 412791, 4467963; 412817, 4469631; 412822, 4470171; 412987, 4470093; 413106, 4470040; 413181, 4470017; 413321, 4470000; 413519, 4469995; 413613, 4469994; 413725, 4470018; 413822, 4470037; 413933, 4470008; 414030, 4469989; 414123, 4470001; 414211, 4470051; 414272, 4470042; 414363, 4470011; 414483, 4469971; 414621, 4469896; 414705, 4469855; 414790, 4469810; 414846, 4469779; 415009, 4469749; 415297, 4469746; 415319, 4469909; 415954, 4469961; 416618, 4470334; 417398, 4470347; 417826, 4470718; 418646, 4470735; 418687, 4470103; 418764, 4470056; 418828, 4470031; 418911, 4470003; 419002, 4469990; 419089, 4469954; 419208, 4469963; 419327, 4469958; 419378, 4469927; 419480, 4469898; 419478, 4469797; 419556, 4469667; 419602, 4469596; 419675, 4469483; 420280, 4469463; 420270, 4470244; 421279, 4470275; 421297, 4470574; 421298, 4470681; 421269, 4470782; 421232, 4470907; 421228, 4470987; 421234, 4471091; 421224, 4471159; 421177, 4471261; 421102, 4471370; 421104, 4471480; 420922, 4471646; 420833, 4471732; 420798, 4471788; 420713, 4471902; 420651, 4471993; 420580, 4472027; 420245, 4472101; 420083, 4472123; 419991, 4472137; 419835, 4472212; 419721, 4472246; 419614, 4472268; 419515, 4472309; 419515, 4472374; 419415, 4472453; 419325, 4472572; 419250, 4472676; 419192, 4472811; 417854, 4472818; 417858, 4473633; 418613, 4473603; 418556, 4473681; 418468, 4473799; 418406, 4473919; 418298, 4474047; 418217, 4474104; 418017, 4474157; 417861, 4474168; 417760, 4474177; 417699, 4474160; 417597, 4474141; 417382, 4474179; 417202, 4474237; 417134, 4474275; 417060, 4474315; 417015, 4474355; 416918, 4474456; 416842, 4474596; 416768, 4474806; 416742, 4474958; 416684, 4475262; 416657, 4475394; 416643, 4475515; 416606, 4475633; 416577, 4475718; 416294, 4475731; 416291, 4475953; 416080, 4476160; 416451, 4476165; 416409, 4476280; 416302, 4476375; 416306, 4476456; 416246, 4476508; 416026, 4476571; 415848, 4476604; 415711, 4476625; 415557, 4476703; 415436, 4476766; 415290, 4476896; 415214, 4476983; 415159, 4477030; 415092, 4477060; 415018,

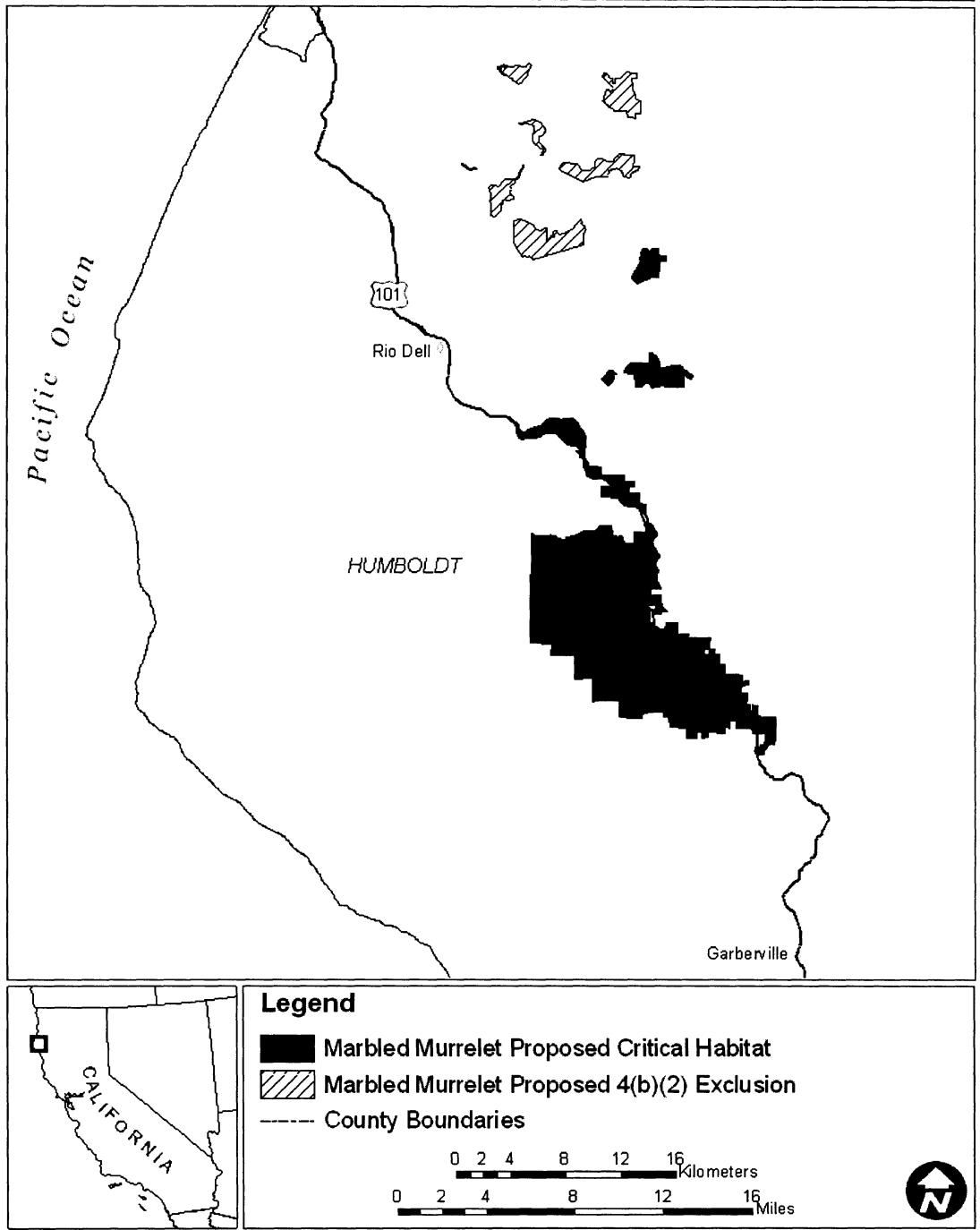
4477208; 414951, 4477309; 414890, 4477399; 414798, 4477478; 414668, 4477536; 414548, 4477573; 414426, 4477566; 414296, 4477559; 414181, 4477557; 414026, 4477568; 413901, 4477561; 413770, 4477529; 413667, 4477475; 413582, 4477424; 413463, 4477358; 413355, 4477294; 413244, 4477251; 413147, 4477210; 413029, 4477165; 412893, 4477150; 412763, 4477131; 412569, 4477120; 412465, 4477146; 412374, 4477158; 412267, 4477168; 412164, 4477199; 412091, 4477249; 412014, 4477299; 411987, 4477371; 411972, 4477481; 411941, 4477574; 411966, 4477720; 412079, 4477703; 412146, 4477612; 412185, 4477545; 412266, 4477527; 412360, 4477528; 412430, 4477574; 412469, 4477629; 412522, 4477697; 412561, 4477747; 412621, 4477784; 412729, 4477822; 412837, 4477862; 412911, 4477891; 413027, 4477939; 413124, 4477972; 413206, 4477973; 413305, 4477994; 413382, 4478002; 413471, 4478028; 413582, 4478132; 413659, 4478209; 413701, 4478259; 413743, 4478311; 413782, 4478354; 413855, 4478408; 413940, 4478451; 414040, 4478498; 414090, 4478532; 414146, 4478549; 414202, 4478565; 414267, 4478586; 414333, 4478597; 414425, 4478593; 414511, 4478591; 414605, 4478565; 414713, 4478561; 414808, 4478548; 414868, 4478521; 414938, 4478505; 415031, 4478499; 415109, 4478544; 415201, 4478565; 415273, 4478580; 415357, 4478591; 415457, 4478593; 415573, 4478613; 415644, 4478597; 415778, 4478564; 415839, 4478556; 415943, 4478491; 416026, 4478417; 416086, 4478362; 416137, 4478298; 416202, 4478223; 416259, 4478101; 416318, 4478001; 416315, 4477940; 416447, 4477846; 416541, 4477721; 416592, 4477627; 416640, 4477540; 416687, 4477465; 416717, 4477402; 416770, 4477311; 416819, 4477189; 416818, 4477074; 416802, 4476976; 416786, 4476884; 416780, 4476787; 416760, 4476687; 416750, 4476579; 416746, 4476509; 416736, 4476421; 416717, 4476319; 416723, 4476195; 416733, 4476096; 416731, 4476002; 416720, 4475887; 416693, 4475774; 416753, 4475650; 416801, 4475567; 416872, 4475476; 416911, 4475375; 416933, 4475319; 416973, 4475215; 417029, 4475100; 417101, 4475067; 417182, 4475078; 417246,

4475064; 417307, 4475061; 417431, 4475051; 417558, 4475051; 417675, 4475019; 417740, 4474997; 417816, 4474972; 417913, 4474942; 417903, 4474447; 419536, 4474426; 419530, 4473978; 420333, 4473972; 420333, 4473564; 419907, 4473558; 419907, 4473187; 420687, 4473187; 420687, 4472365; 421116, 4472352; 421106, 4471636; 421105, 4471561; 421183, 4471454; 421219, 4471386; 421274, 4471276; 421328, 4471174; 421345, 4471089; 421438, 4470960; 421488, 4470903; 421551, 4470830; 421604, 4470761; 421657, 4470700; 421694, 4470654; 421737, 4470568; 421781, 4470472; 421849, 4470380; 421912, 4470313; 421944, 4470251; 421951, 4470156; 421940, 4470039; 421870, 4469895; 421797, 4469852; 421751, 4469806; 421721, 4469736; 421695, 4469668; 421642, 4469607; 421633, 4469547; 421642, 4469432; 421679, 4469339; 421724, 4469274; 421776, 4469193; 421829, 4469081; 421909, 4468999; 421998, 4468880; 422067, 4468751; 422107, 4468656; 422120, 4468568; 422126, 4468507; 422135, 4468440; 422065, 4468375; 422020, 4468322; 421991, 4468254; 421924, 4468124; 421875, 4468047; 421846, 4467972; 421831, 4467901; 421884, 4467728; 421919, 4467676; 421957, 4467591; 421961, 4467497; 422024, 4467489; 422072, 4467438; 422032, 4467301; 421966, 4467158; 421921, 4467016; 421950, 4466913; 421992, 4466757; 422217, 4466132; 421498, 4466153; 421474, 4465668; 422280, 4465692; 422223, 4465270; 422320, 4464868; 422672, 4464467; 422269, 4464481; 422254, 4464376; 422229, 4464306; 422193, 4464254; 422055, 4464274; 421933, 4464304; 421877, 4464278; 421816, 4464297; 421807, 4464412; 421843, 4464901; 421147, 4464906; 421397, 4464511; 421378, 4463623; 421469, 4463625; 421523, 4463667; 421731, 4463665; 421786, 4463512; 421813, 4463458; 421848, 4463392; 421883, 4463321; 422012, 4463240; 422141, 4463208; 422557, 4463210; 422563, 4463605; 423432, 4463595; 423400, 4462806; 424256, 4462814; 424190, 4462480; 425804, 4462518; 425781, 4462081; 425763, 4461725;

(xi) Note: Map of Southern Humboldt County Unit (Map 12) follows:

BILLING CODE 4310-55-P

Map 12. Southern Humboldt County Proposed Critical Habitat Unit, California



(17) Mendocino County Unit, California. Humboldt, Trinity, and Mendocino counties, California. From USGS 1:24,000 scale quadrangles: Bailey Ridge, Bell Springs, Burbeck, Cahto Peak, Cold Springs, Comptche, Dutchmans Knoll, Eureka Hill, Fort Bragg, Garberville, Greenough Ridge, Hales Grove, Harris, Iron Peak, Jewett Rock, Laytonville, Leggett, Lincoln Ridge, Mallo Pass Creek, Mathison Peak, Mendocino, Noble Butte, Northspur, Noyo Hill, Ornbaun Valley, Orrs Springs, Philo, Piercy, Point Arena, Sherwood Peak, and Tan Oak Park.

(i) Land bounded by the following UTM Zone 10, NAD83 coordinates (E,N): 445341, 4377851; 445485, 4377643; 445667, 4377448; 445896, 4377271; 446192, 4377152; 446289, 4377165; 446378, 4377161; 446454, 4377131; 446518, 4377118; 446569, 4377080; 446628, 4377042; 446700, 4377025; 446770, 4377057; 446899, 4377135; 446966, 4377194; 447038, 4377211; 447127, 4377185; 447246, 4377118; 447272, 4377013; 447280, 4376919; 447224, 4376847; 447144, 4376797; 447051, 4376790; 446941, 4376792; 446868, 4376734; 446793, 4376665; 446687, 4376665; 446560, 4376665; 446450, 4376775; 446387, 4376822; 446251, 4376805; 445985, 4376869; 445811, 4376979; 445743, 4376995; 445663, 4376991; 445574, 4377089; 445392, 4377313; 445130, 4377453; 445045, 4377512; 444960, 4377525; 444740, 4377461; 444723, 4377364; 444626, 4377245; 444452, 4377233; 444330, 4377288; 444219, 4377355; 444192, 4377487; 444224, 4377584; 444249, 4377647; 444346, 4377783; 444430, 4377808; 444520, 4377812; 444622, 4377728; 444741, 4377765; 444909, 4377817; 445026, 4377862; 445117, 4377897; 445235, 4377910; 445341, 4377851;

(ii) Land bounded by the following UTM Zone 10, NAD83 coordinates (E,N): 447288, 4388698; 447278, 4388627; 447203, 4388647; 447149, 4388622; 447132, 4388567; 447114, 4388514; 447040, 4388541; 446981, 4388558; 446927, 4388573; 446866, 4388610; 446827, 4388645; 446780, 4388662; 446721, 4388655; 446628, 4388656; 446541, 4388730; 446507, 4388799; 446547, 4388843; 446607, 4388844; 447392, 4388808; 447319, 4388760; 447288, 4388698;

(iii) Land bounded by the following UTM Zone 10, NAD83 coordinates (E,N): 444965, 4317817; 445053, 4317788; 445160, 4317802; 445245, 4317799; 445327, 4317773; 445386, 4317740; 445458, 4317710; 445526, 4317673; 445583, 4317651; 445625, 4317634; 445667, 4317657; 445699, 4317705; 445736, 4317753; 445803,

4317787; 445859, 4317777; 445910, 4317741; 445964, 4317658; 445994, 4317579; 446032, 4317494; 446073, 4317429; 446144, 4317334; 446230, 4317262; 446299, 4317228; 446359, 4317213; 446441, 4317198; 446524, 4317202; 446586, 4317203; 446690, 4317215; 446789, 4317220; 446883, 4317173; 446918, 4317095; 446892, 4317028; 446855, 4316984; 446784, 4316935; 446732, 4316886; 446639, 4316852; 446506, 4316833; 446408, 4316842; 446311, 4316845; 446236, 4316872; 446118, 4316931; 446042, 4316971; 445954, 4317038; 445870, 4317101; 445755, 4317207; 445655, 4317287; 445562, 4317390; 445423, 4317519; 445298, 4317592; 445218, 4317608; 445157, 4317621; 445067, 4317587; 445011, 4317541; 444977, 4317448; 444958, 4317390; 444922, 4317345; 444876, 4317306; 444779, 4317251; 444697, 4317189; 444661, 4317108; 444687, 4317014; 444719, 4316952; 444734, 4316879; 444761, 4316803; 444764, 4316714; 444749, 4316636; 444717, 4316588; 444659, 4316531; 444588, 4316507; 444506, 4316523; 444430, 4316540; 444387, 4316465; 444380, 4316387; 444385, 4316260; 444408, 4316129; 444455, 4316022; 444510, 4315970; 444590, 4315961; 444676, 4315965; 444784, 4315955; 444890, 4315940; 444950, 4315917; 445000, 4315875; 445055, 4315809; 445045, 4315690; 445041, 4315630; 445002, 4315566; 444985, 4315495; 444977, 4315420; 444933, 4315361; 444873, 4315324; 444797, 4315306; 444723, 4315305; 444646, 4315295; 444506, 4315309; 444370, 4315347; 444269, 4315416; 444251, 4315472; 444254, 4315558; 444286, 4315664; 444323, 4315831; 444288, 4315897; 444226, 4316003; 444169, 4316085; 444138, 4316169; 444109, 4316245; 444074, 4316297; 444026, 4316337; 443933, 4316400; 443874, 4316443; 443843, 4316500; 443792, 4316427; 443711, 4316369; 443608, 4316338; 443511, 4316326; 443435, 4316335; 443361, 4316356; 443294, 4316364; 443257, 4316283; 443215, 4316210; 443145, 4316171; 443042, 4316191; 442959, 4316221; 442898, 4316243; 442824, 4316295; 442768, 4316333; 442681, 4316373; 442586, 4316347; 442539, 4316315; 442438, 4316297; 442344, 4316250; 442224, 4316154; 442154, 4316236; 442163, 4316301; 442149, 4316400; 442162, 4316492; 442216, 4316555; 442277, 4316591; 442367, 4316602; 442461, 4316553; 442530, 4316571; 442586, 4316607; 442670, 4316672; 442715, 4316695; 442795, 4316665; 442877, 4316600; 442935, 4316499; 443031, 4316459; 443105, 4316508; 443130,

4316580; 443179, 4316642; 443249, 4316652; 443314, 4316643; 443390, 4316609; 443450, 4316587; 443538, 4316593; 443641, 4316642; 443702, 4316706; 443787, 4316734; 443796, 4316780; 443798, 4316847; 443810, 4316937; 443843, 4317019; 443818, 4317076; 443774, 4317127; 443729, 4317169; 443708, 4317224; 443744, 4317317; 443864, 4317414; 443965, 4317472; 444041, 4317505; 444091, 4317530; 444145, 4317563; 444214, 4317550; 444282, 4317539; 444242, 4317643; 444367, 4317705; 444489, 4317739; 444560, 4317740; 444615, 4317798; 444711, 4317805; 444817, 4317793; 444916, 4317821; 444965, 4317817;

(iv) Land bounded by the following UTM Zone 10, NAD83 coordinates (E,N): 466182, 4344237; 466174, 4343546; 466572, 4343546; 467349, 4343536; 467776, 4343584; 467828, 4343082; 467357, 4343083; 467366, 4342680; 467354, 4342274; 467784, 4342269; 467793, 4341460; 468193, 4341456; 468190, 4341064; 468396, 4341050; 468404, 4340286; 468186, 4340275; 468187, 4340652; 467795, 4340654; 467319, 4340662; 467322, 4341047; 467325, 4341465; 465421, 4341491; 465402, 4341892; 465389, 4342765; 465260, 4342773; 465070, 4342847; 464992, 4342913; 464884, 4343017; 464826, 4343091; 465398, 4343091; 465684, 4343089; 466183, 4343099; 466187, 4343331; 465677, 4343339; 465650, 4344221; 465839, 4344227; 466182, 4344237;

(v) Land bounded by the following UTM Zone 10, NAD83 coordinates (E,N): 430432, 4353114; 430354, 4353081; 430334, 4353131; 430432, 4353114;

(vi) Land bounded by the following UTM Zone 10, NAD83 coordinates (E,N): 430432, 4353114; 430507, 4353125; 430565, 4353163; 430635, 4353123; 430690, 4353187; 430771, 4353060; 430819, 4352975; 430882, 4352884; 430917, 4352756; 430868, 4352685; 430755, 4352746; 430706, 4352762; 430631, 4352855; 430568, 4352926; 430521, 4352985; 430458, 4352999; 430456, 4353066; 430432, 4353114;

(vii) Land bounded by the following UTM Zone 10, NAD83 coordinates (E,N): 434539, 4353054; 434563, 4353487; 435260, 4353471; 435875, 4353457; 435708, 4353661; 435696, 4353836; 435263, 4353842; 435158, 4353843; 435157, 4354249; 434746, 4354253; 434752, 4354685; 433978, 4354716; 433970, 4355131; 433180, 4355137; 433187, 4355558; 432375, 4355554; 432369, 4355952; 431980, 4355966; 431982, 4356764; 432168, 4356757; 432173, 4356922; 431977,

4356959; 431972, 4357173; 433156, 4357151; 433145, 4357514; 432742, 4357542; 432738, 4357928; 431957, 4358182; 431963, 4358493; 432547, 4358484; 433625, 4357590; 433980, 4357467; 434346, 4357450; 438552, 4357094; 438542, 4352945; 435161, 4353027; 435160, 4353214; 434771, 4353209; 434785, 4353017; 434539, 4353054;

(viii) Land bounded by the following UTM Zone 10, NAD83 coordinates (E,N): 434746, 4354253; 435157, 4354249; 435158, 4353843; 435263, 4353842; 435696, 4353836; 435708, 4353661; 435875, 4353457; 435260, 4353471; 434563, 4353487; 434539, 4353054; 434364, 4353056; 433569, 4353076; 433468, 4353079; 432774, 4353081; 432771, 4353486; 431176, 4353519; 430663, 4353533; 430636, 4353589; 430639, 4353635; 430631, 4353695; 430616, 4353775; 430605, 4353830; 430594, 4353945; 430600, 4354039; 430607, 4354099; 430913,

4354131; 430925, 4354435; 431166, 4354548; 431975, 4354521; 431972, 4354316; 434746, 4354253;

(ix) Land bounded by the following UTM Zone 10, NAD83 coordinates (E,N): 430720, 4353224; 430779, 4353146; 430809, 4353078; 430927, 4352765; 430873, 4352729; 430845, 4352776; 430729, 4352869; 430664, 4352843; 430625, 4352867; 430581, 4352868; 430576, 4352910; 430547, 4352959; 430474, 4352977; 430462, 4353049; 430414, 4353081; 430342, 4353077; 430310, 4353120; 430371, 4353140; 430420, 4353152; 430475, 4353146; 430543, 4353158; 430586, 4353189; 430641, 4353145; 430703, 4353173; 430720, 4353224;

(x) Land bounded by the following UTM Zone 10, NAD83 coordinates (E,N): 430720, 4353224; 430685, 4353254; 430669, 4353309; 430617, 4353358; 430541, 4353389; 430493, 4353406; 430448, 4353446; 430468, 4353484; 430533, 4353526; 430606,

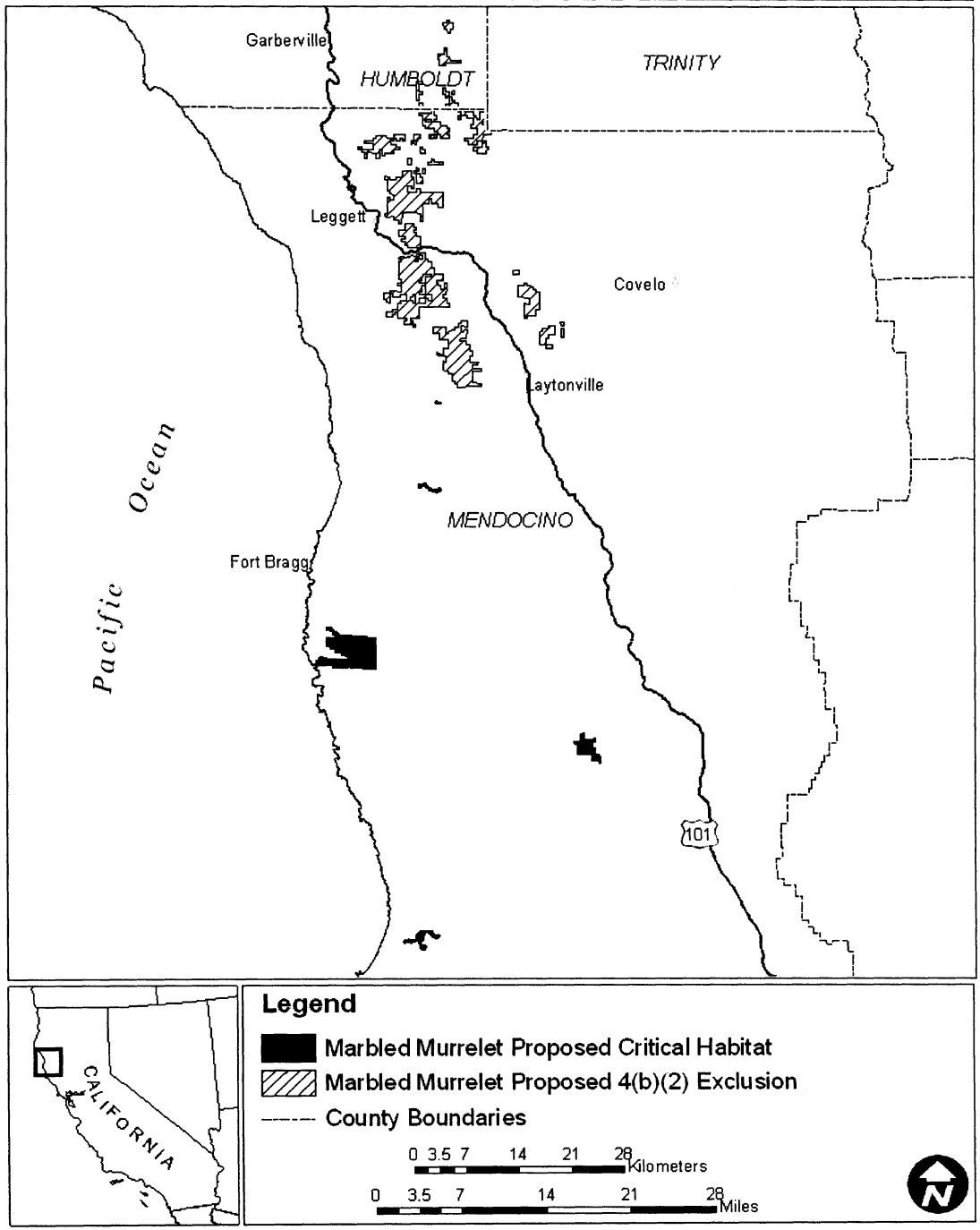
4353551; 430636, 4353589; 430663, 4353533; 430678, 4353392; 430720, 4353224;

(xi) Land bounded by the following UTM Zone 10, NAD83 coordinates (E,N): 430616, 4353775; 430631, 4353695; 430639, 4353635; 430540, 4353650; 430439, 4353640; 430319, 4353564; 430248, 4353545; 430218, 4353485; 430165, 4353419; 430086, 4353442; 430078, 4353513; 430039, 4353564; 429966, 4353624; 429947, 4353702; 430005, 4353740; 430055, 4353767; 429994, 4353813; 430017, 4353846; 430179, 4353909; 430179, 4353709; 430332, 4353709; 430337, 4353998; 430439, 4354016; 430528, 4354035; 430533, 4353947; 430594, 4353945; 430605, 4353830; 430616, 4353775;

(xii) Note: Map of Mendocino County Unit (Map 13) follows:

BILLING CODE 4310-55-P

Map 13. Mendocino County Proposed Critical Habitat Unit, California



(18) Santa Cruz Mountains Unit, California. San Mateo and Santa Cruz counties, California. From USGS 1:24,000 scale quadrangles: Ano Nuevo, Big Basin, Davenport, Felton, Franklin Point, La Honda, Mindego Hill, Montara Mtn, and Woodside.

(i) Land bounded by the following UTM Zone 10, NAD83 coordinates (E,N): 579268, 4098531; 579407, 4098464; 579497, 4098504; 579604, 4098552; 579643, 4098660; 579699, 4098686; 579823, 4098622; 579972, 4098463; 580097, 4098296; 580237, 4098172; 580845, 4098254; 580965, 4098242; 581491, 4097603; 581778, 4097265; 581753, 4097412; 581385, 4097802; 582283, 4097868; 582493, 4098177; 582797, 4098054; 583646, 4099108; 583862, 4099066; 583999, 4098888; 584127, 4098741; 584193, 4098710; 584330, 4098711; 584407, 4098766; 584492, 4098889; 584532, 4099021; 584561, 4099099; 584653, 4099149; 584958, 4099143; 585055, 4099144; 585165, 4099154; 585244, 4099052; 585260, 4098884; 585319, 4098734; 585646, 4097883; 585904, 4096965; 585229, 4096828; 584564, 4096511; 584296, 4096390; 583666, 4096381; 584003, 4096145; 584184, 4095611; 582831, 4094864; 582817, 4094745; 582795, 4094653; 582739, 4094531; 582792, 4094351; 582808, 4094161; 582834, 4093969; 582765, 4093736; 582642, 4093324; 582593, 4093001; 582510, 4093061; 582133, 4093665; 581594, 4093686; 581489, 4093438; 581612, 4093078; 581616, 4092933; 581524, 4092580; 581616, 4092384; 581562, 4092166; 581658, 4091917; 581420, 4091909; 581401, 4092174; 581443, 4092388; 581371, 4092499; 581321, 4092798; 581190, 4093040; 581037, 4093327; 580922, 4093481; 580776, 4093588; 580615, 4093760; 580428, 4093879; 580240, 4093944; 580029, 4093944; 579879, 4093967; 579722, 4093987; 579488, 4093952; 579373, 4093883; 579178, 4093783; 578944, 4093676; 578829, 4093828; 578944, 4093868; 579079, 4093967; 579305, 4094065; 579338, 4094127; 579440, 4094182; 579722, 4094167; 580328, 4094021; 581068, 4093929; 581225, 4094132; 581202, 4094792; 581079, 4095297; 581027, 4095462; 580354, 4095743; 580609, 4096827; 579427, 4096712; 579219, 4098038; 578226, 4097905; 578422, 4099474; 578836, 4099494; 578906, 4098691; 579198, 4098689; 579243, 4098643; 579268, 4098531; and excluding land bound by 581789, 4096557; 581792, 4095827; 582203, 4095827; 582228, 4095747; 582685, 4095782; 582784, 4096432; 582685, 4096581; 581789, 4096557;

(ii) Land bounded by the following UTM Zone 10, NAD83 coordinates (E,N): 577402, 4105312; 577416, 4104868; 578648, 4104912; 578654, 4104526; 579075, 4104536; 579089, 4104148; 579489, 4104159; 579514, 4103279; 579929, 4103309; 579952, 4102912; 580773, 4102941; 580773, 4102508; 581154, 4102511; 581165, 4102152; 581613, 4101404; 581784, 4101392; 581787, 4101043; 581720, 4101016; 581788, 4100939; 581601, 4100820; 580795, 4100771; 580798, 4101152; 579539, 4101121; 579546, 4100723; 578766, 4100699; 578735, 4101106; 579162, 4101114; 579153, 4101555; 578320, 4101523; 578293, 4102369; 578702, 4102389; 578691, 4102822; 577893, 4102818; 577881, 4103138; 577720, 4103132; 577707, 4103307; 577465, 4103300; 577461, 4103438; 577287, 4103437; 577245, 4103480; 577365, 4103553; 577366, 4103659; 577158, 4103660; 577157, 4103743; 576983, 4103860; 576974, 4105307; 577402, 4105312;

(iii) Land bounded by the following UTM Zone 10, NAD83 coordinates (E,N): 567487, 4110615; 567497, 4110384; 567275, 4110398; 567270, 4110630; 567487, 4110615;

(iv) Land bounded by the following UTM Zone 10, NAD83 coordinates (E,N): 571899, 4112993; 571920, 4112850; 572009, 4112838; 572185, 4112839; 572161, 4113167; 572279, 4113193; 572327, 4112964; 572455, 4112839; 572526, 4111866; 572092, 4111860; 572146, 4111230; 571354, 4111217; 571347, 4112672; 571300, 4112923; 571543, 4112894; 571735, 4112872; 571734, 4113149; 571850, 4113230; 572012, 4113251; 572012, 4113146; 572011, 4112998; 571899, 4112993;

(v) Land bounded by the following UTM Zone 10, NAD83 coordinates (E,N): 563342, 4125352; 561676, 4125345; 561641, 4126126; 563133, 4126120; 563154, 4125779; 563210, 4125768; 563274, 4125659; 563322, 4125573; 563336, 4125489; 563348, 4125420; 563342, 4125352;

(vi) Land bounded by the following UTM Zone 10, NAD83 coordinates (E,N): 565654, 4127384; 565827, 4127390; 565895, 4127298; 565989, 4127296; 566063, 4127354; 566067, 4127430; 566068, 4127557; 566434, 4127553; 566452, 4127723; 566820, 4127708; 566808, 4126121; 568376, 4126163; 568369, 4126557; 569167, 4126582; 569197, 4125392; 569196, 4124988; 569602, 4124967; 569599, 4124586; 569958, 4124574; 569971, 4123809; 571150, 4123789; 571152, 4125393; 570378, 4125390; 570775, 4126127; 570776, 4126572; 571340, 4126565; 571472, 4126152; 571553,

4126123; 571549, 4125385; 571940, 4125385; 571957, 4124549; 572301, 4124547; 572585, 4124546; 574375, 4124540; 574367, 4124197; 573513, 4124197; 573513, 4123754; 573312, 4123770; 572702, 4123770; 572711, 4122943; 571955, 4122968; 571954, 4123370; 571562, 4123334; 571517, 4122605; 571151, 4122627; 571149, 4122245; 571159, 4121430; 570750, 4121417; 570361, 4121764; 569234, 4121772; 569220, 4121614; 569026, 4121355; 568817, 4121350; 568815, 4121290; 568813, 4121200; 568811, 4121113; 568809, 4121037; 568684, 4121041; 568630, 4121004; 568589, 4120938; 568520, 4120921; 568384, 4120804; 568318, 4120913; 568198, 4120994; 568137, 4120992; 568044, 4121011; 567978, 4121077; 567903, 4121183; 567780, 4121279; 567671, 4121354; 567578, 4121429; 567462, 4121517; 567420, 4121586; 567389, 4121742; 567205, 4121840; 567205, 4121939; 566978, 4122029; 566839, 4122051; 566755, 4122095; 566655, 4122292; 566540, 4122268; 566424, 4121833; 566440, 4121117; 566732, 4120862; 566723, 4120701; 567133, 4120524; 567368, 4120140; 567363, 4119487; 567190, 4119092; 567213, 4118546; 568038, 4118576; 568017, 4118993; 568603, 4118999; 568905, 4119001; 569312, 4118992; 569926, 4118979; 570022, 4118977; 570295, 4118973; 570345, 4118089; 570459, 4118055; 570513, 4117914; 570589, 4117845; 570541, 4117695; 570589, 4117644; 570644, 4117595; 570692, 4117481; 571976, 4117486; 571982, 4115898; 572794, 4115899; 572745, 4115633; 572795, 4115437; 572780, 4115198; 572004, 4115192; 572023, 4114482; 572017, 4114087; 571606, 4114131; 571538, 4113422; 570813, 4113472; 570785, 4113190; 570752, 4112987; 570181, 4113020; 570171, 4113452; 569972, 4113444; 570006, 4113016; 569238, 4113009; 569214, 4112093; 568806, 4112121; 568808, 4111166; 567853, 4111321; 567855, 4111193; 568004, 4111105; 568066, 4110325; 568314, 4110451; 568531, 4110400; 568831, 4110165; 568856, 4109801; 568757, 4109584; 568595, 4109419; 568295, 4109164; 568184, 4109035; 568958, 4108899; 568987, 4108423; 568625, 4108478; 568606, 4108081; 568934, 4108042; 568894, 4107666; 568944, 4106867; 567387, 4106927; 566522, 4105709; 566588, 4105607; 566631, 4105352; 566624, 4104959; 566471, 4104951; 566129, 4105192; 565881, 4105702; 565655, 4105753; 565400, 4105876; 565039, 4106017; 564884, 4106015; 564842, 4105747; 564251, 4105772; 564255, 4105699; 564259, 4105632; 564263,

4105568; 564249, 4105401; 564214, 4105451; 564210, 4105545; 564182, 4105598; 564126, 4105651; 564047, 4105709; 563883, 4105902; 563650, 4106174; 563599, 4106270; 563523, 4106412; 563454, 4106476; 563387, 4106517; 563326, 4106596; 563278, 4106649; 563167, 4106699; 563017, 4106822; 562908, 4106903; 562847, 4106974; 562902, 4107152; 563492, 4107165; 563512, 4106534; 563606, 4106476; 563671, 4106393; 563739, 4106387; 563705, 4107630; 563107, 4107612; 562676, 4107733; 562600, 4107800; 562484, 4107953; 562433, 4108044; 562316, 4108064; 562189, 4108115; 562143, 4108252; 562108, 4108344; 562093, 4108399; 562022, 4108460; 561945, 4108542; 561925, 4108638; 561879, 4108765; 561839, 4108856; 561829, 4108973; 561758, 4109060; 561686, 4109151; 561752, 4109288; 561824, 4109359; 561925, 4109395; 562057, 4109557; 562093, 4109618; 562291, 4109677; 562296, 4109801; 562306, 4109918; 562372, 4110019; 562463, 4110035; 562504, 4110161; 562595, 4110263; 562707, 4110400; 562778, 4110475; 562853, 4110568; 562923, 4110655; 562954, 4110730; 562983, 4110846; 562972, 4110956; 562923, 4111051; 562951, 4111130; 563027, 4111115; 563067, 4111054; 563128, 4110973; 563166, 4110921; 563229, 4110936; 563256, 4111034; 563290, 4111095; 563383, 4111112; 563470, 4111112; 563533, 4111147; 563577, 4111202; 563586, 4111300; 563610, 4111462; 562403, 4111438; 562402, 4111034; 562063, 4110979; 562109, 4110724; 561596, 4110601; 561102, 4110308; 560959, 4110456; 560817, 4110404; 560729, 4110591; 560830, 4110668; 560872, 4110719; 560905, 4110791; 560932, 4110834; 560922, 4110925; 560868, 4110996; 560807, 4111069; 560739, 4111162; 560680, 4111263; 560651, 4111324; 560598, 4111411; 560548, 4111531; 560774, 4111868; 560140, 4111943; 559799, 4112283; 559707, 4112264; 559686, 4112185; 559334, 4112431; 559327, 4112492; 559316, 4112581; 559308, 4112649; 559388, 4112721; 559472, 4112795; 559408, 4112820; 559311, 4112812; 559221, 4112780; 558808, 4113129; 558676, 4113093; 558597, 4113062; 558510, 4113140; 558453, 4113225; 558404, 4113352; 558356, 4113434; 558289, 4113409; 558254, 4113333; 558239, 4113277; 558232, 4113218; 558233, 4113132; 558226, 4113051; 558216, 4112977; 558181, 4112924; 558108, 4112915; 558051, 4112963; 558043, 4113052; 558042, 4113188; 558031, 4113283; 558045, 4113349; 558080, 4113504; 558117, 4113618; 558139, 4113720; 558174, 4113819; 558203, 4113969; 558201, 4114147; 558231, 4114319; 558207, 4114433; 558193, 4114535; 558192, 4114687; 558170, 4114816; 558093, 4115001; 558059, 4115097; 557969, 4115205; 557933, 4115266; 557864, 4115318; 557790, 4115322; 557741, 4115325; 557717, 4115400; 557725, 4115495; 557775, 4115528; 557834, 4115562; 557977, 4115685; 558046, 4115693; 558094, 4115744; 558165, 4115775; 558262, 4115730; 558346, 4115670; 558406, 4115676; 558491, 4115702; 558565, 4115697; 558621, 4115693; 558672, 4115688; 558795, 4115675; 558893, 4115644; 558965, 4115627; 559021, 4115613; 559097, 4115631; 559168, 4115664; 558807, 4117154; 558678, 4117202; 558597, 4117213; 558504, 4117245; 558494, 4117313; 558401, 4117340; 558741, 4117699; 558842, 4117858; 558889, 4117962; 558917, 4118025; 558946, 4118106; 558985, 4118283; 558932, 4118350; 558621, 4118744; 558620, 4119164; 558624, 4119479; 558714, 4119538; 558745, 4119605; 558941, 4119652; 559082, 4119710; 559102, 4119840; 559176, 4119950; 559247, 4119875; 559325, 4119969; 559400, 4120032; 559533, 4120087; 559380, 4120165; 559482, 4120330; 559615, 4120389; 559600, 4120465; 559647, 4120596; 559248, 4120598; 559253, 4121245; 558635, 4121220; 558642, 4122131; 558638, 4123018; 558634, 4123726; 560093, 4123720; 560065, 4124443; 562457, 4124517; 562456, 4123759; 563228, 4123761; 563327, 4124541; 564063, 4124524; 564062, 4126545; 564894, 4126584; 564868, 4126984; 565657, 4126995; 565654, 4127384; and excluding land bound by 566684, 4111815; 566682, 4111408; 566402, 4111407; 566398, 4111625; 566094, 4111625; 566074, 4111406; 566097, 4111205; 566439, 4111157; 566502, 4110653; 566872, 4110605; 566875, 4110844; 567096, 4110839; 567099, 4110277; 567278, 4110215; 567288, 4109828; 567770, 4109677; 567632, 4111002; 566904, 4111098; 566868, 4111411; 566792, 4111410; 566783, 4111829; 566684, 4111815; and excluding land bound by 564223, 4107246; 564226, 4106829; 564642, 4106861; 564529, 4106773; 564427, 4106686; 564332, 4106603; 564230, 4106536; 564231, 4106460; 564367, 4106384; 564409, 4106297; 564451, 4106220; 564453, 4106151; 564362, 4106153; 564238, 4106013; 564246, 4105863; 564679, 4106013; 564716, 4106458; 564890, 4107049; 564781, 4107392; 564732, 4107538; 564651, 4107555; 564539, 4107566; 564484, 4107425; 564483, 4107351; 564467, 4107295; 564223, 4107246;

(vii) Land bounded by the following UTM Zone 10, NAD83 coordinates (E,N): 565654, 4127384; 564866, 4127346; 564840, 4127718; 564475, 4127748; 564423, 4128565; 564058, 4128567; 563283, 4129036; 563306, 4129845; 563374, 4129839; 563473, 4129812; 563521, 4129750; 563558, 4129666; 563585, 4129569; 563661, 4129545; 563792, 4129516; 563873, 4129456; 564057, 4129415; 564308, 4129321; 564376, 4129269; 564521, 4129211; 564634, 4129149; 564780, 4129005; 564843, 4128946; 564904, 4128787; 564942, 4128726; 564965, 4128562; 565074, 4128562; 565136, 4128380; 565246, 4128277; 565324, 4128212; 565442, 4128102; 565541, 4128103; 565648, 4128056; 565654, 4127384;

(viii) Land bounded by the following UTM Zone 10, NAD83 coordinates (E,N): 558364, 4144497; 558453, 4144378; 558384, 4144283; 558185, 4144276; 558364, 4144497;

(ix) Land bounded by the following UTM Zone 10, NAD83 coordinates (E,N): 558178, 4145107; 558255, 4144970; 558422, 4145077; 558477, 4145077; 558515, 4145012; 558556, 4144947; 558472, 4144894; 558405, 4144849; 558481, 4144771; 558481, 4144624; 558503, 4144564; 558583, 4144567; 558644, 4144534; 558688, 4144510; 558798, 4144508; 558889, 4144495; 558968, 4144422; 559044, 4144398; 559063, 4144230; 558962, 4144230; 558984, 4143766; 559289, 4143768; 559287, 4143427; 559685, 4143408; 559682, 4143110; 559655, 4143080; 560449, 4143074; 560412, 4143275; 561026, 4143393; 561340, 4143684; 561322, 4143786; 561335, 4143880; 561402, 4144004; 561441, 4144124; 561469, 4144239; 561520, 4144300; 561603, 4144385; 561668, 4144514; 561687, 4144584; 561756, 4144632; 561850, 4144618; 561906, 4144638; 562026, 4144687; 562143, 4144704; 562237, 4144698; 562343, 4144676; 562407, 4144652; 562470, 4144636; 562556, 4144640; 562626, 4144680; 562678, 4144580; 562720, 4144526; 562775, 4144434; 562871, 4144361; 562941, 4144277; 562998, 4144189; 563043, 4144105; 563077, 4143962; 563144, 4143860; 563192, 4143778; 563267, 4143711; 563350, 4143628; 563413, 4143540; 563475, 4143469; 561713, 4142207; 561325, 4142700; 561200, 4142621; 561120, 4142756; 560910, 4142697; 560475, 4142400; 560388, 4142339; 560303, 4142285; 560256, 4142246; 560199, 4142199; 560136, 4142169; 560111, 4142104; 560122, 4142012; 560165, 4141844; 560141, 4141747; 560078,

4141712; 560034, 4141779; 560016,
4141831; 559969, 4141859; 559893,
4141873; 559869, 4141936; 559820,
4141970; 559777, 4142016; 559720,
4142050; 559681, 4141958; 559669,
4141892; 559615, 4141876; 559563,
4141901; 559502, 4141944; 559438,
4141990; 559391, 4141984; 559413,
4141915; 559432, 4141874; 559383,
4141835; 559305, 4141808; 559292,
4141756; 559257, 4141716; 559177,
4141739; 559097, 4141790; 558959,
4141797; 558888, 4141796; 558833,
4141817; 558748, 4141866; 558651,
4141896; 558580, 4141938; 558521,
4141994; 558408, 4142028; 558323,
4142001; 558283, 4142029; 558233,

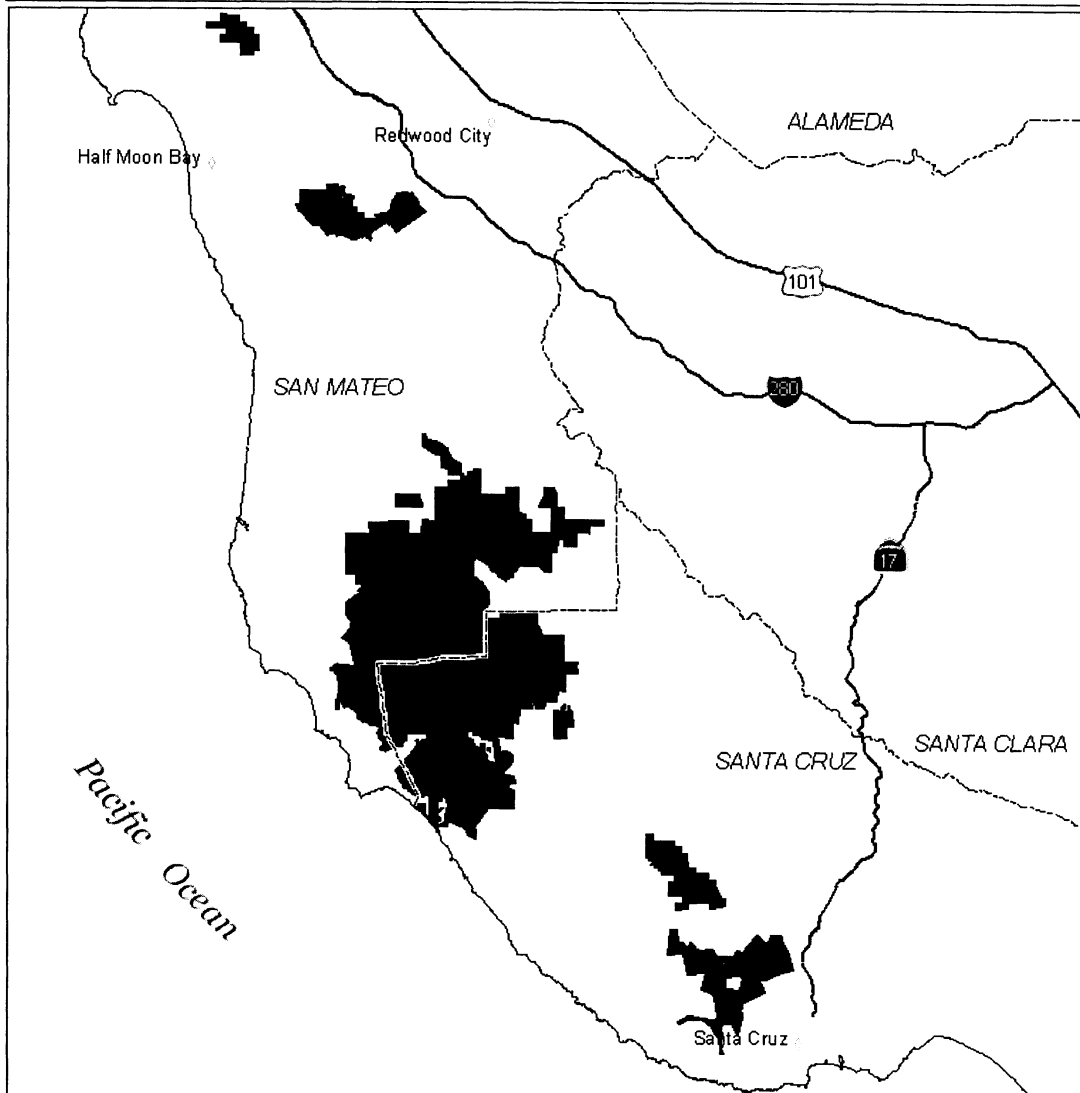
4142044; 558178, 4142040; 558128,
4141997; 558077, 4141972; 558043,
4142023; 557991, 4142074; 557932,
4142102; 557864, 4142129; 557792,
4142116; 557732, 4142097; 557673,
4142072; 557429, 4142055; 556983,
4142628; 556591, 4142629; 555786,
4143480; 555701, 4143495; 555684,
4143555; 555676, 4143603; 555558,
4143941; 555813, 4143948; 555812,
4144736; 557412, 4144753; 557412,
4145098; 558178, 4145107; and
excluding land bound by 558364,
4144497; 558185, 4144276; 558384,
4144283; 558453, 4144378; 558364,
4144497;

(x) Land bounded by the following
UTM Zone 10, NAD83 coordinates
(E,N): 552129, 4155086; 552527,
4155069; 552529, 4154673; 552930,
4154673; 552928, 4154265; 553333,
4154264; 553337, 4153875; 553338,
4153353; 552993, 4153353; 552993,
4153029; 552167, 4153030; 552148,
4153872; 550972, 4153866; 550958,
4154258; 551327, 4154256; 551318,
4154667; 550140, 4154662; 550137,
4155080; 550944, 4155073; 550930,
4155530; 551731, 4155498; 552125,
4155497; 552129, 4155086;

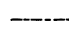
(xi) Note: Map of Santa Cruz
Mountains Unit (Map 14) follows:

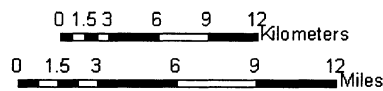
BILLING CODE 4310-55-P

Map 14. Santa Cruz Mountains Proposed Critical Habitat Unit, California



Legend

-  Marbled Murrelet Proposed Critical Habitat Unit
-  County Boundaries



* * * * *

Dated: August 30, 2006.
David M. Verhey,
*Acting Assistant Secretary for Fish and
Wildlife and Parks.*
[FR Doc. 06-7437 Filed 9-11-06; 8:45 am]
BILLING CODE 4310-55-P