

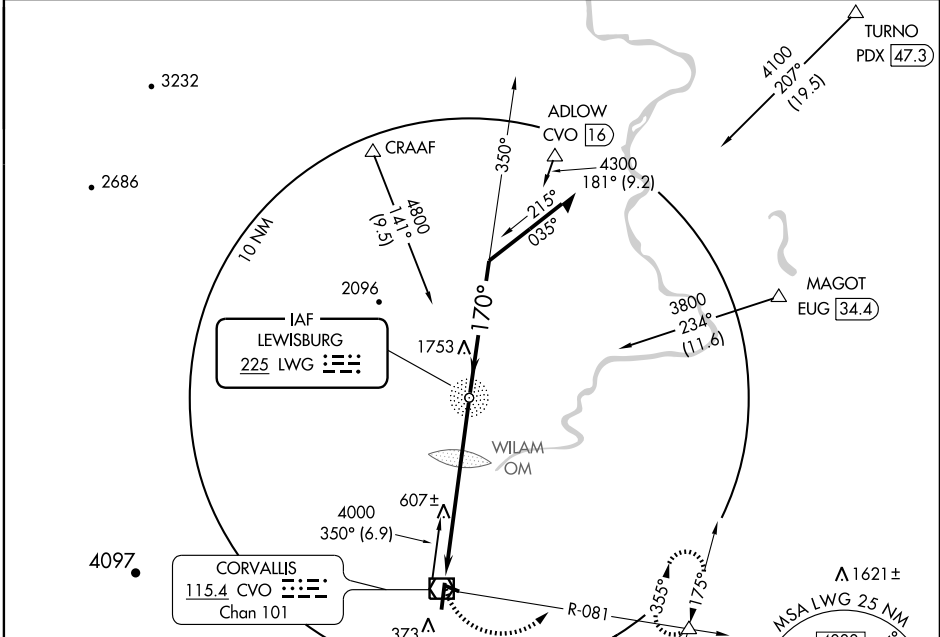
# NDB RWY 17

CORVALLIS MUNI (CVO)

NDB LWG <b>225</b>	APP CRS <b>170°</b>	Rwy ldg TDZE Apt Elev	<b>5900</b> <b>244</b> <b>246</b>
-----------------------	------------------------	-----------------------------	---

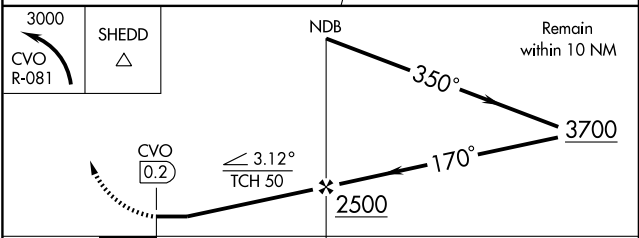
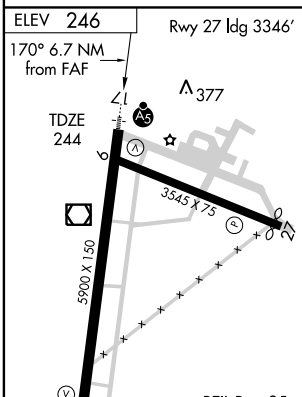
NA	MALSR 	MISSED APPROACH: Climbing left turn to 3000 via the CVO R-081 to SHEDD Int/EUG 22.1 DME and hold.
----	-----------	---

AWOS-3 <b>135.775</b>	CASCADE APP CON* <b>127.5 348.7</b>	UNICOM <b>123.0 (CTAF)</b>
--------------------------	--	-------------------------------



NW-1, 09 APR 2009 to 07 MAY 2009

NW-1, 09 APR 2009 to 07 MAY 2009



	FAF to MAP 6.7 NM		REIL Rwy 35 MIRL Rwy 9-27 MIRL Rwy 17-35			
	60	90	120	150	180	
Knots	60	90	120	150	180	
Min:Sec	6:42	4:28	3:21	2:41	2:14	

	CVO R-081		NDB			
	A	B	C	D		
S-17	960-3/4	716 (800-3/4)	960-1 1/2 716 (800-1 1/2)	960-2 716 (800-2)		Remain within 10 NM
CIRCLING	960-1	714 (800-1)	960-2 714 (800-2)	960-2 1/4 714 (800-2 1/4)		