



Battelle President, CEO Kohrt Talks on Battelle, BNL, 2/17

Carl Kohrt, President and CEO of Battelle and the current BSA Board Chair, will give a talk on "Battelle's Vision and Its Relevance to BNL," on Tuesday, February 17, at 1 p.m., in Berkner Hall. All are invited. Kohrt will focus on Battelle's strategic purposes in operating laboratories, the strength of its partnership with Stony Brook University and affiliated universities, and the benefits that can occur at BNL from this.

Kohrt began his tenure at Battelle in 2001 after a distinguished 29-year career at Kodak, where his work was nearly equally divided among research and development, global technical management, and international business.

Battelle, a global science and technology enterprise, oversees 16,000 staff members and conducts \$2.7 billion in annual research and development. This area of responsibility includes

four national laboratories that Battelle manages or co-manages for DOE: BNL, National Renewable Energy Laboratory, Oak Ridge National Laboratory, and Pacific Northwest National Laboratory.

A native of central Illinois, Kohrt earned a B.S. in chemistry from Furman University, a Ph.D. in physical chemistry from the University of Chicago, and an M.S. in management science from the Massachusetts

Institute of Technology. He serves on the boards of numerous business and civic organizations, including the Board of Directors of Scram Technologies, Inc; Pharos, LLC; Battelle for Kids; Project GRAD-Columbus; COSI Columbus; Brookhaven Science Associates, LLC; UT-Battelle, LLC; Furman University Board of Trustees; Ohio Business Roundtable; and Greater Columbus Chamber of Commerce. — Liz Seubert

BNL Honors 14 for Science & Technology, Engineering, Support

At the BNL Employee Recognition Award Ceremony on February 2, 14 Lab employees were rewarded with BNL's highest honors. This Bulletin features the employees who won the Science & Technology Award, a \$5,000 prize given to recognize distinguished contributions to the Lab's science and technology mission over one or more years. The prize may be won in any scientific or technical discipline other than engineering and computing. Future Bulletins will focus on the five \$5,000 Engineering Award winners and the four Brookhaven Award winners.

At the ceremony, the Science & Technology Awards were presented by Peter Paul, Deputy Laboratory Director for Science & Technology. The five winners are: Robert Bari, Energy Sciences & Technology Department; Louis DiMauro, Chemistry Department; Jan Hrbek, Chemistry; Gene-Jack Wang, Medical Department, and Anatoli Zelenski, Collider-Accelerator Department. A summary of their achievements follows.

— Liz Seubert



Pictured with BNL Director Praveen Chaudhari (back, second from left), Deputy BNL Director for Science & Technology Peter Paul (back, left), and Interim Deputy BNL Director for Operations Mike Bebon (back, right) are the recipients of BNL's 2003 Science & Technology Award: (back, from left) Anatoli Zelenski, Collider-Accelerator Department; Jan Hrbek, Chemistry Department; (front, from left) Louis DiMauro, Chemistry; Gene-Jack Wang, Medical Department; and Robert Bari, Energy Sciences & Technology Department.

Robert Bari

Robert Bari, Energy Sciences & Technology Department, is internationally known for outstanding contributions to the development and application of probabilistic risk assessment (PRA) methods to nuclear reactors, nuclear materials and waste management, and electrical power system reliability. Under his leadership, BNL became recognized as a world leader in PRA methodologies. A Fellow of the American Nuclear Society (ANS), he was honored in 2003

(continued on page 2)

Louis DiMauro

Louis DiMauro, Chemistry Department has been recognized for his pioneering work in applying and improving ultrafast laser technology to characterize the response of atoms and molecules to intense, nonperturbative electromagnetic fields. Among his experiments of particular note are studies of the double ionization of helium, with results that ultimately led to the development of a rescattering model that reproduces the observed helium

(continued on page 2)

Jan Hrbek

Jan Hrbek, Chemistry Department, has made landmark contributions to the characterization and understanding of catalysts on surfaces, vital to the improvement of catalyst design. He is internationally recognized not only for his application of synchrotron radiation and scanning tunneling microscopy to catalysis and surface science systems but also for his leadership in nanoscale catalysis research, now a major theme at the BNL Center for Functional Nanomaterials.

(continued on page 2)

Gene-Jack Wang

Gene-Jack Wang, Medical Department, has made outstanding, original and creative contributions to the field of brain imaging, particularly in the field of obesity. In a landmark study, published in *The Lancet*, he used Positron Emission Tomography (PET) imaging to document for the first time that obese individuals experience reduced brain dopamine activity.

Dopamine is the main chemical messenger for transmitting signals of reward and well-being. Prior studies by Wang and Nora Volkow had shown that other forms of addiction like cocaine, alcohol,

(continued on page 3)

Anatoli Zelenski

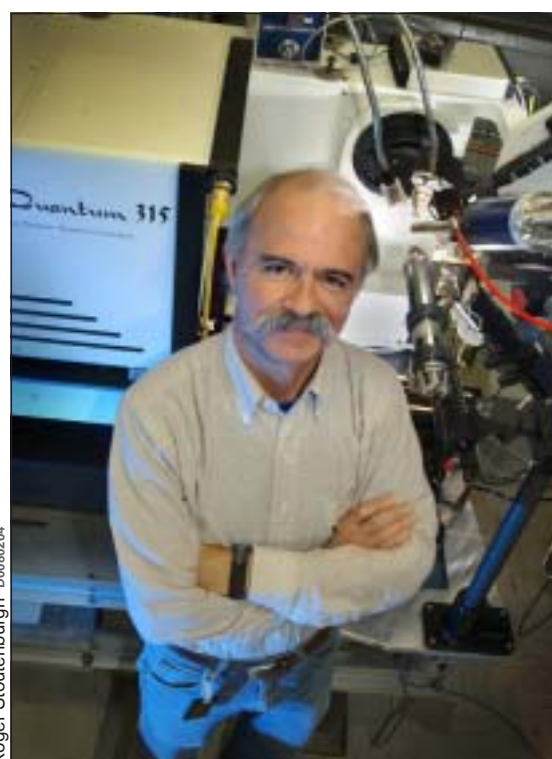
Anatoli Zelenski, Collider-Accelerator Department, has been recognized for his pioneering work in the design and development of a very high intensity, optically pumped, polarized negative hydrogen ion source — the starting point for the polarized beams used for polarized proton collisions at BNL's Relativistic Heavy Ion Collider (RHIC).

Zelenski's state-of-the-art source is ten times more intense than the previous polarized source used at the Alternating Gradient Synchrotron and is an essential addition to the RHIC polarization facilities, making it possible to measure proton spin

(continued on page 3)

391st Brookhaven Lecture

'Cultivating Crystallography: A Research Resource for Biomolecular Structures at the NSLS,' 2/25



Researchers who attempt to design drugs, produce vaccines, and modify the biosynthesis of natural products have a powerful tool in the National Synchrotron Light Source (NSLS). They can get direct information and graphical guidance on a range of life processes from images of biological macromolecules, images that have extremely high — atomic level — resolution.

To help obtain these images, Robert Sweet and a team of biophysicists from the Biology Department, in collaboration with NSLS researchers, operate workstations using short-wavelength (x-ray) light from the NSLS. From these workstations, they, plus academic and industrial users, can visualize crystalline specimens of large biological molecules and viruses.

To describe the work he and his colleagues have done in the develop-

(Left) Robert Sweet at the NSLS.

ment and operation of the NSLS stations where the data that produce these images are obtained, Sweet will give the 391st Brookhaven Lecture, "Cultivating Crystallography: A Research Resource for Biomolecular Structures at the NSLS."

The talk will begin at 4 p.m. in Berkner Hall on Wednesday, February 25. Sweet will be introduced by Biology Department Chair Carl Anderson.

In addition to describing how the crystallography method works, Sweet will discuss how several results obtained using the NSLS have impacted biological science.

This research includes work on the ribosome — the cell's protein-synthesis factory — and on the ion-pore research by 2003 Nobel Prize winner Rod McKinnon of Rockefeller University. Sweet will also describe how BNL researchers meet the needs of investigators who come from all over the world to use the NSLS.

Sweet received his 1970 Ph.D. in

physical chemistry from the University of Wisconsin. He came to Brookhaven in 1983, to develop NSLS beam line X12C. In 2000, he was a co-recipient of BNL's Science & Technology Award for contributions to the development and use of NSLS protein crystallography beam lines. He is currently the principal investigator of the Macromolecular Crystallography Research Resource, which provides facilities and support at the NSLS for the benefit of outside and in-house investigators.

Brookhaven lectures are free and open to the public. Visitors to the Lab ages 16 and over must have photo identification. — John Galvin

To join Sweet at an off-site restaurant after the lecture, contact Denise Kranz Robinson, Ext 5055, or kranz@bnl.gov.

Calendar of Laboratory Events

- The BERA Sales Office is located in Berkner Hall and is open weekdays from 9 a.m. to 3 p.m. For more information on BERA events, contact Andrea Dehler, Ext. 3347; or Chris Carter, Ext. 2873.
- Additional information for Hospitality Committee events can be found at the Lollipop House and the laundry in the apartment area.
- The Recreation Building (Rec. Hall) is located in the apartment area.
- Contact names are provided for most events for more information.
- Calendar events flagged with an asterisk (*) have an accompanying story in this week's Bulletin.

— EACH WEEK —

Mondays: BNL Gospel Choir

5:15-7 p.m. Berkner Hall. All faiths are welcome. www.bnl.gov/bera/activities/choir/.

Weekdays: Free English for Speakers of Other Languages Classes

Beginner, Intermediate, and Advanced classes. Various times. All are welcome. Learn English, make friends. See www.bnl.gov/esol/schedule.html for schedule. Jen Lynch, Ext. 4894.

Mon., Tues., & Thurs.: Kickboxing

\$5 per class. Mon. & Thurs. noon-1 p.m. in the gym; Tues., 5:15-6:15 p.m. in the gym; Thurs., 5:15-6:15 p.m. in Brookhaven Ctr. Registration is required. Christine Carter, Ext. 2873.

Monday & Friday: Jazzercise

Noon-1 p.m., Rec. Hall. Pre-registration is required. Christine Carter, Ext. 5090.

Mon., Thurs., & Fri.: Tai Chi

Noon-12:45 p.m., Brookhaven Center North Room. Adam Rusek, Ext. 5830 or rusek@bnl.gov.

Tuesdays: Welcome Coffee

10-11:30 a.m. Rec. Hall. Hospitality event. Come and meet friends. The first Tuesday of every month is special for Lab newcomers and leaving guests. Hospitality Chair Monique de la Beij, 399-7656.

Tuesdays: BNL Music Club

Noon, North Room, Brookhaven Center. Come hear live music. Joe Vignola, Ext. 3846.

Tuesdays: Jiu Jitsu Club

6:30-7:30 p.m. in the gym. All levels, ages 6 and above. \$10 per class. Tom, Ext. 4556.

Tuesdays: Toastmasters

1st and 3rd Tuesday of each month, 5:30 p.m., Bldg. 463, room 160. Guests, visitors always welcome. www.bnl.gov/bera/activities/toastmasters/default.htm.

Tuesdays & Thursdays: Aerobics

5:15-6:30 p.m., \$4 per class. Rec. Hall. Pat Flood, Ext. 7886.

Tuesdays & Thursdays: Aqua Aerobics

5:15-6:15 p.m. Eight-week session. \$20 to attend once a week; \$40 to attend twice a week. Ext. 2873 for more information.

Tues. & Thurs: Upton Nursery School

9-11:30 a.m. in the Rec. Hall. For 3 & 4 year olds. Alison Tilp, Ext. 4465, or tilp@bnl.gov.

Wednesdays: On-Site Play Group

10 a.m.-noon. Rec. Hall. An infant/toddler drop-in event. Parents meet while children play. Cindy Otteman, 821-4482.

Wednesdays: Weight Watchers

Noon-1 p.m. Michael Thorn, Ext. 8612.

Wednesdays: Yoga Practice

Noon-1 p.m., Brookhaven Center. Free. Ila Campbell, Ext. 2206.

Wednesdays: Open Chess Night

5-8 p.m., Rec. Hall. Christine Carter, Ext. 5090.

Wednesdays: Dance Lessons

6-8 p.m., North Ballroom, Brookhaven Ctr. John Millener, Ext. 3853.

Fridays: Family Swim Night

5-8 p.m. at the BNL Pool. \$5 per family.

Fridays: BNL Social & Cultural Club

6-9 p.m. North Ballroom, Brookhaven Ctr., dance lessons, 9-11:30 p.m. general dancing. Rudy Alforque, Ext. 4733, rudy@bnl.gov.

February is Black History Month

See the Black History Month poster exhibit on display during the month of February in Berkner Hall.

Additional events commemorating Black History Month are included in the calendar below.

— THIS WEEKEND —

Friday, 2/13

*Blood Drive

9:30 a.m.-3 p.m., Brookhaven Center. BNLers from age 17 to 75, in good health, and weighing over 110 pounds are welcome. All donors must have photo ID and know their social security number. Make an appointment through Susan Foster, Ext. 2888 or donateblood@bnl.gov.

*Valentine's Eve Dance Party

7 p.m. Complimentary hustle dance lesson. 8 p.m. ACCENT rock band will play. Jointly sponsored by BNL Social & Cultural Club and BNL Ballroom Dance Club. \$8, buy tickets at the door only. See notice, page 4.

Invasive Plant Awareness Week, 2/21-28

BNLers, Join the Weed Watchers!

A little-known BNL group, the volunteer Weed Watchers, is hoping to attract more members. But why watch weeds?

"Invasive plant species are taking over our native ecosystems," says Tim Green, BNL's Cultural and Natural Resources Manager, in the Environmental & Waste Management Services Division. "This is resulting in a dramatic loss of habitat and biodiversity across the country."

Green explains that the invaders are non-native species of plants that have the ability to grow quickly, produce prolific seeds, and out-compete the native species. Through its Natural Resource Management Program, BNL has identified invasive species as one of the concerns for the integrity of the Pine Barrens ecosystem.

"To help in the detection effort, we have established a volunteer Weed Watchers group comprised of concerned BNL employees," says Green. "The group is led by Maureen Dunn of the Department of Environmental Sciences."

Says Dunn, "We started small, last April, and the volunteer Weed Watchers group now has about 15 members. Nine of us are trained in identifying invasive weeds. With help from student interns, we have begun mapping all the known invasive species located on BNL's site, which is 5,265 acres. So far, we've identified a number of different species that threaten habitats on site."

BNL's site invaders include Japanese Barberry, which was originally planted in gardens as an ornamental shrub and has now escaped and grows wild, displacing native vegetation and changing the soil pH; Oriental bittersweet, an extremely invasive woody vine, common at BNL, which inhibits photosynthesis in native trees and quickly destroys the tree as it wraps around it; Phragmites or common reed, which has displaced acres of native reeds and cattail marshes in freshwater and estuarine wetlands across the country, "and the list goes on and on," says Green.

"We've mapped the locations

With Tim Green (right), BNL's Cultural & Natural Resources Manager, are the volunteers who form the BNL Weed Watchers: (from left) Ernie Lewis, Mary Lynn Heinrich, Tom Lambertson, Rolf Beutenmuller, Nicole Bernholz, Maureen Dunn, and Jerry Granzen. Not pictured are Liz Bradley, Elaine Dimasi, Jennifer Higbie, and Barbara Hoffheins.



Roger Stoutenburgh ds020104



These beautiful Phragmites, photographed on BNL site by Roger Stoutenburgh in 1989, are one of the invasive weeds that could displace the native reeds of Long Island.

Roger Stoutenburgh 12-2986-88

of all known infestations of weeds and we're maintaining them as a layer within the Geographic Information System used by BNL," says Dunn.

National Community Effort

BNL is not alone in weed watching. Nationally, the Invasive Weeds Management Council is working to coordinate efforts of federal agencies and states to reduce the threat of the invaders. Regionally, the Long Island Weed Management Area (LIWMA), established in 2002, is working to form a partnership between local landowners to locate, map, and identify weed-free areas in order to protect them from invasive weeds. BNL is a member of the LIWMA.

"One of the most interesting aspects of watching for these weeds is the community spirit it involves," says Dunn. "It's to everyone's advantage that all

areas of land are protected, because seeds can migrate from one place to another so quickly. We have found that BNL is comparatively free of invasive weeds, but that's not the case everywhere. This is a situation that needs constant surveillance, for our own sakes and for our neighbors' sakes too."

What can be done to help? Says Green, "When planting your gardens and flowerbeds, take the time to learn whether the plants you are going to use

are invasive or not. Then, once you know which plants are invasive, ask your greenhouse to discontinue the sale of these common plants. Many horticulturists are joining the growing coalition to stop invasive weeds. See if yours will, too."

Finally, anyone wanting to help repel the invaders can join either BNL's Weed Watchers group (see box) or the Long Island Weed Watchers coordinated by the Long Island Chapter of The Nature Conservancy.

Get to Know Your Lab!

Visit the Radiation Calibration Facility, 2/27

On Friday, February 27, all are invited to visit the Radiation Calibration Facility, operated by the Radiological Control Division's (RCD) Instrumentation & Calibration Group. The facility provides calibration, maintenance, and repair for over 1,400 monitoring instruments used at BNL. Meet at noon in the upper lobby of Berkner Hall. Elaine Lowenstein of Community Involvement will take the group to Bldg. 348 where Paul Zahra, RCD, will explain work done at the facility. The group will return to Berkner by 1 p.m.

BNL Honors 14 for Science & Technology, Engineering, Support

(cont'd.)

Bari

(cont'd.)

by the Society's Tommy Thompson prize for contributions to nuclear safety research.

Bari, who joined BNL in 1971, had received his Ph.D. in physics from Brandeis University. He has more than 100 technical publications on risk assessment and nuclear safety, and has been extremely active in related professional areas, such as serving on the ANS Board of Directors, 1994-99. At BNL, he was Deputy Chair, then Chair of the Department of Advanced Technology, 1988-95, 1995-2000, and in 1999 also served as an Interim Associate Laboratory Director.

In recent work, Bari has been applying probabilistic risk techniques to relatively uncharted areas: the reliability of electrical grid systems, the safety of nuclear waste and non-reactor materials, and the evaluation of nonproliferation characteristics and physical protection of reactor and other nuclear facility designs. He currently serves as U.S. Co-chair of the Generation IV nuclear reactor international experts group that is tasked with developing nonproliferation evaluation methodologies for the next generation of nuclear power plants worldwide.

DiMauro

(cont'd.)

double ionization yields and accounts for observed high-energy cutoff for ejected electrons, and the unexpected plateau and cut-off energies for high-harmonic, photon emission. The rescattering model provides a unified description of intense field interactions for effects such as multiple electron ejection and high-harmonic generation, and opens the door to deeper exploration into laser-atom interactions.

DiMauro has also contributed substantially to the success of the Free Electron Laser (FEL) program at BNL, from its inception to his present involvement with the crucial area of laser beam metrology. His outstanding work has strengthened BNL's position as a leader in laser-accelerator physics. In recognition, in addition to his having tenure in Chemistry, he was appointed to the tenured staff of the National Synchrotron Light Source Department.

DiMauro, who joined the Lab in 1988, received his Ph.D. in chemistry at the University of Connecticut. He is a Fellow of the American Physical Society and of the Optical Society of America.

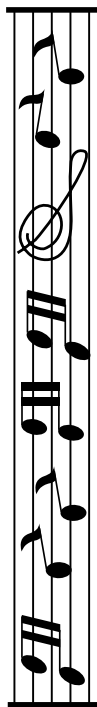
Hrbek

(cont'd.)

Catalysts, which accelerate and direct chemical reactions without themselves reacting, are critical in the chemical and petrochemical industries and essential for keeping the environment clean. Through Hrbek's work, notable advances have been made in the understanding, for example, of sulfur poisoning, which improves the poison resistance of catalysts for transformation of oil to valuable chemicals; alkali promoters, which help produce ammonia, ethylene oxide, etc. In his nanoscience research he discovered that sulfur atoms structurally self-assemble and transform the substrate structure with minor changes in sulfur coverage or temperature; he obtained time-resolved images of adsorbates on surfaces that demonstrate the dynamic nature of ordered adlayers; and he has developed a way to prepare a model catalyst that allows the study of the relationship between nanoscale structures and reactivity.

Hrbek received his Ph.D. in chemistry at the Czechoslovak Academy of Sciences. He joined BNL in 1984, and was Interim Department Chair 2001-2003.

'The Gathering of the Slides II,' Sonny Landreth at BNL, 2/20



"The Gathering of the Slides II," a concert featuring Sonny Landreth, will be held in Berkner Hall on Friday, February 20, at 8 p.m. Sponsored by the BNL Music Club and the Long Island Blues Society, the concert will be open to the public. All visitors to the Laboratory age 16 and over must bring a photo ID.

Born in Canton, Mississippi, Sonny Landreth started his own band when he was about 13 years old. His recording, "The Road We're On," from Sugar Hill Records, has been nominated for a Grammy Award for the best contemporary blues album of 2003.

In addition, guest artists include the Kerry Kearney Band and Little Toby Walker. The Kearney band includes Eileen "Little Steamroller" Murphy on drums, Frank Celenze on bass, and Tony Campo on keyboards.

Tickets for the show cost \$20 in advance at the BERA Sales Office or \$30 at the door. The BNL Music Club requests that each audience member bring a nonperishable food item to the concert for the Lab's food drive to benefit local food pantries.

Arrivals & Departures

Arrivals

Joanna Ingraham EENS

Departures

Michael Verderosa QM

Hospitality Party, 2/14

The BNL Hospitality Committee invites all BNLers to attend a Valentine's Day party on Saturday, February 14, at 5:30 p.m. in the Recreation Hall. Food, beverages, and DJ music will be provided. Children are welcome provided that they have parental supervision. For more information, contact Monique de la Beij, 399-7656.

ASAP Happenings

Students & Postdocs — These events are for you! All events are in the ASAP lounge — under the dome, Bldg. 750.

- Tuesdays, noon
Lunch Discussions
- Wednesdays, 7 p.m.
Movie Night
- Thursdays, 5 p.m.
Free coffee and snacks

Wang

(cont'd.)

and heroin show low brain dopamine activity, indicating that addiction is characterized by an under-stimulated reward system. The obesity study that Wang designed was recognized as innovative and technically challenging, and its results, also showing that obese people have activated mouth area function, were published in *NeuroReport*.

His research has also included brain imaging of effects of physical exercise, sex differences in drug effects, and drug cravings. Recently, he spearheaded a new study on aggression and violence.

With an MD from Kaihsung Medical University, Taiwan, and a master's degree from The Johns Hopkins University, Wang joined BNL in 1990. Among his 145 peer-reviewed publications, he is first author on 31 articles since 1992. In addition, he serves as the responsible physician for the PET Imaging Program. His organizational skills have been a key element of the high productivity of the BNL PET Program.

Give Life Today Blood Drive, 2/13

Those eligible to donate are people in good health between the ages of 17 and 75 who weigh at least 110 pounds. Contact Susan Foster at Ext. 2888, or e-mail donateblood@bnl.gov.

Softball Captains, 2/25

A meeting for all softball captains will be held at noon on Wednesday, February 25, in Berkner Hall, Room D. At least one representative from each team that plans to play this season should attend. League fee and structure will be discussed and each team should bring a \$50 team deposit to this meeting. For more information, contact Rich Scheidet, Ext. 5284.

Daffodil Days

BERA will again be selling daffodils to benefit the American Cancer Society. A bunch of ten fresh cut flowers is \$7. Pick up your spring bouquet during the week of March 22. Paid reservations are being taken at the BERA Sales Office, Bldg. 488, Monday-Friday, 9 a.m.-3 p.m.

Zelenski

(cont'd.)

structure functions and the gluon contribution to proton spin using high-energy polarized proton collisions.

Zelenski's development of polarized sources is recognized worldwide. He received his Ph.D. in physics at the Moscow Institute for Nuclear Research, Russia, for developing one of the world's first optically pumped polarized sources.

Later, working at TRIUMF, Vancouver, he started on a new source for RHIC using KEK optically pumped source hardware at the suggestion of Y. Mori, KEK, Japan. He continued developing the source at BNL, joining the Lab in May 2000. In September, the source was used for RHIC spin commissioning and continued to operate very reliably under further development during the 2001-03 polarized runs.

Currently, Zelenski has a leading role in the successful construction of a polarized hydrogen jet polarimeter to measure the absolute polarization of the high-energy proton beams in RHIC.

Poems It's Time to Hear

It's Time is the title of Robert "Bob" Brown's book of collected poetry, and also words he likes to live by. Brown, who retired from BNL in 2001, has been writing poetry for as long as he can remember.

"Writing poems has been a favorite hobby of mine all my life, and I thought it was time to share some of them," says Brown. He has given poetry readings at the East Enders Coffee House in Riverhead and to Long Island East End senior citizen groups.

Brown's poems show life and change, family situations that are relevant to everyone, a father's abiding love for his child, a man's lyric love for his bride. He sees parallels to human characteristics in nature: "Are we leaves or flowers or trees." He talks about growing old, about current affairs, about his commitment to Christianity.

"I always get such a positive response when I share my poems with other people. There is nothing better than sharing my experiences as a black person growing up and living in Riverhead," he says.

Because his poems are expressed so simply, sincerely, and with such honesty, Brown's experiences as a black person can be truly shared. A stunningly powerful example is found in "Where Go Ye Bigot," in which he shows his belief that prejudice is not just against a particular race, and that modern times, "When blood's put in a blender, When transplants are commonplace," will eventually leave bigots behind:

*Where go ye now oh Bigot
What place do you call home
Some time in this land
Which is close at hand
You'll find you're standing all alone.*

Black History Month Event

Brown Reads His Poetry, 2/18

Bob Brown will be reading from his poems on February 18, noon-1 p.m. in Berkner Hall. Copies of his book and CD are available in the BERA store.

BSA Noon Recital Music From Russia, 2/25

On Wednesday, February 25, at noon in Berkner Hall, Mazaika — Russian singer and accordion maestro Igor Outkine and stunning virtuoso violinist Sarah Harrison — will present a magical and exhilarating program of colorful music from the heart of Russia. They will perform pieces ranging from traditional Russian folk songs and romances to dazzling gypsy fiddle showpieces and thrilling gypsy songs.

All are welcome to BSA Noon Recitals, which are free and open to the public. Visitors of 16 and over must carry a photo ID.

Experience the Toastmasters Tradition! International Speech and Evaluation Contest, 2/17

All are invited to the next Toastmasters Club meeting, on Tuesday, February 17, at 5:30 p.m., when the club members will hold an international speech and evaluation contest. Refreshments, coffee and tea will be served. The event will take place in Room 160, Bldg. 463. For more information, contact Beth Lin, 344-3372, bylin@bnl.gov and visit www.bnl.gov/bera/activities/toastmstrs/.



Roger Stoulenburgh 00271203

Bob Brown

This optimism for the future is seen repeatedly in the poems, as, for example, in

*It's Time
The time for revenge and blame
has passed*

*Let's look to the future anew
God has led us safely thus far
Now it's time to do our just due.*

*It's time for my young brothers
To stand tall with pride and grace
And to be a living hero to
Some child of this proud race.*

Brown feels strongly that Martin Luther King Jr. made great contributions to African Americans' destiny, but that much work is needed to carry on King's legacy. In another poem, Brown honors King:

*Our Debt to Dr. King
Never was and never will be
An easy thing to arrange
To alter a course, without brute
force
To inflict a culture change.
Attend a school board meeting
Visit town hall once in awhile
Really rock the boat, each
election vote
And feel King's heavenly smile . . .*

Says Brown, "My true motto in life is that there is nothing you can't do if you want to do it badly enough." — Jane Koropsak

Calendar

(continued)

Saturday, 2/14

*Valentine's Day Party

5:30 p.m., Rec. Hall. All are welcome to attend this Hospitality-Committee-sponsored party. See notice below, left. Monique de la Beij, 399-7656.

— WEEK OF 2/16 —

Wednesday, 2/18

Thermo Vacuum Generators Demo

10 a.m.-2 p.m., Berkner Hall. Representatives from Thermo Vacuum Generators will present BNLers with special discounts on their products and services. Tom, 617-471-3888, tommurphy@thermo.com.

*Poetry Reading

Noon, Berkner Hall. Poetry reading featuring Robert "Bob" Brown. BNL African-American Culture Club-sponsored Black History Month event. Barbara Simpson, Ext. 7643. See story, left.

Black History Brain Quiz

Noon, Berkner Hall. BNL African-American Culture Club-sponsored Black History Month event. Barbara Simpson, Ext. 7643.

Thursday, 2/19

BERA Bridge Club

7 p.m., Brookhaven Center, South Room. Morris Strongson, Ext. 4192, mms@bnl.gov.

Friday, 2/20

*Blues Concert

8 p.m. Berkner Hall. Sonny Landreth and "The Gathering of the Slides II." Tickets cost \$20 in advance, \$30 at the door. See announcement at left.

Fri., 2/20 - Sun. 2/22

BERA Ski Weekend to Gore Mountain

Some seats remain. Bus departs BNL 2/20, 5 p.m. and departs Lake George at 5 p.m., 2/22. Prices from \$195 pp-quad, \$215 pp-triple, \$225 pp-double. Call Christine Carter, 5090. See www.adventureunlimited.com.

— WEEK OF 2/23 —

Monday, 2/23

IBEW Meeting

6 p.m. Knights of Columbus Hall, Railroad Ave., Patchogue. A meeting for shift workers will be held at 3 p.m. in the union office. The agenda includes regular business, committee reports, and the president's report.

Thursday, 2/26

African Dance & Drum Circle

Noon, Berkner Hall Lobby. One of the BNL African-American Culture Club-Sponsored Black History Month events. Barbara Simpson, Ext. 7643.

— WEEK OF 3/1 —

Tuesday, March 2

Caring Friends Meet

Noon, Berkner Hall, Room D. All are welcome to join an informal support group serving as a resource for individuals experiencing grief following the loss of a loved one. For more information, call Pat Hein, Ext. 3962, or Gerry Van Derlaske, Ext. 3476.

Thursday, 3/4

Vegetarian Cooking Talk

Noon, Berkner Hall, Room B. Talk by Deanne Brandstetter, nutrition specialist, of Flik International Corp., includes vegetarian lunch buffet. \$10/person, buy ticket from BNL Cafeteria cashiers. Space is limited.

BERA Bridge Club

7 p.m., Brookhaven Center, South Room. Morris Strongson, Ext. 4192, mms@bnl.gov.

— WEEK OF 3/15 —

Thursday, 3/18

Summer Camp Expo

11:30 a.m.-1:30 p.m., Berkner Hall. Local Long Island summer camps will provide BNLers with information about summer camp opportunities, facilities, and registration information. Liz Gilbert, Ext. 2315.

Note: This calendar is updated continuously and will appear in the Bulletin whenever space permits. Submissions must be received by the preceding Friday at noon to appear in the following week's Bulletin. Enter information for each event in the order listed above (date, event name, description, and cost) and send it to bulletin@bnl.gov. Write "Bulletin Calendar" in the subject line.



Sarah Harrison and Igor Outkine

