

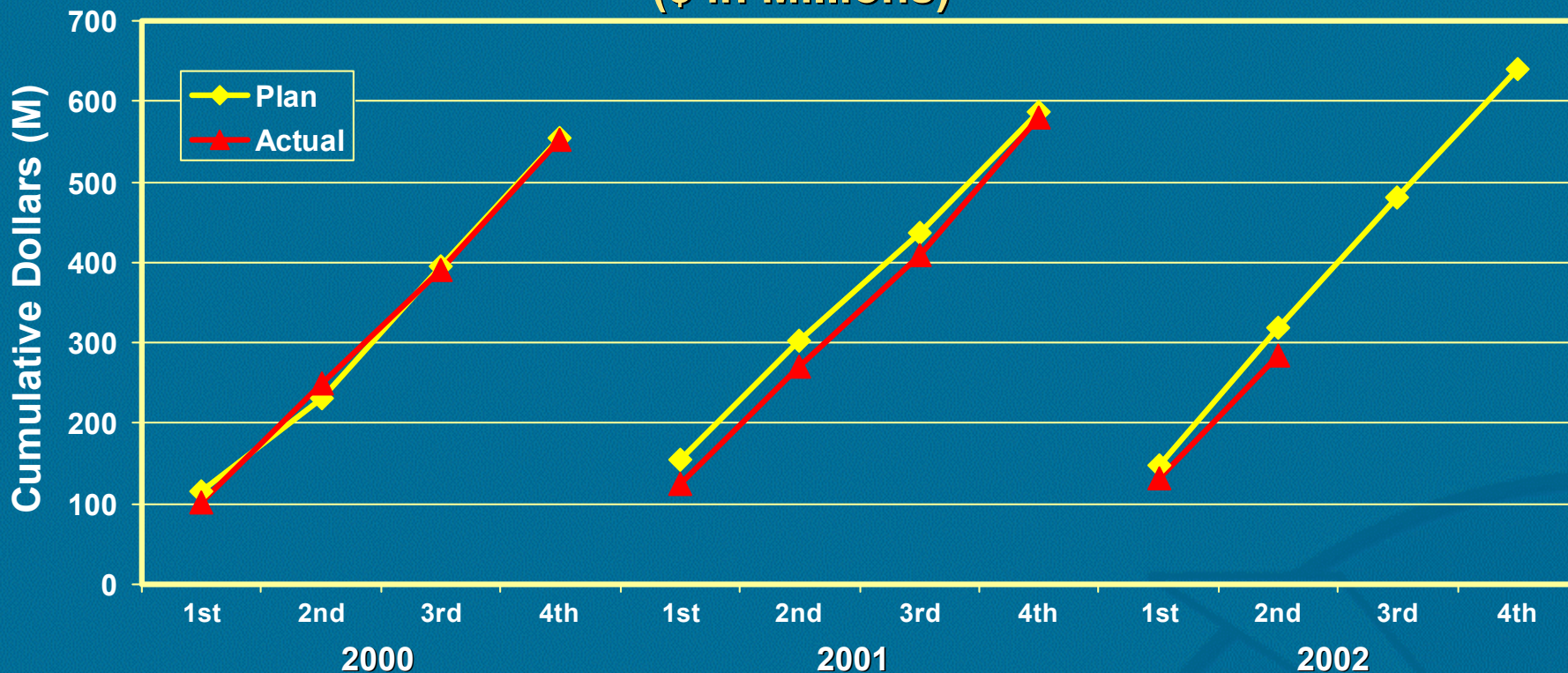


National Weather Service ***2nd Quarter Review***

June 28, 2002

National Weather Service Spending Plan-OR&F

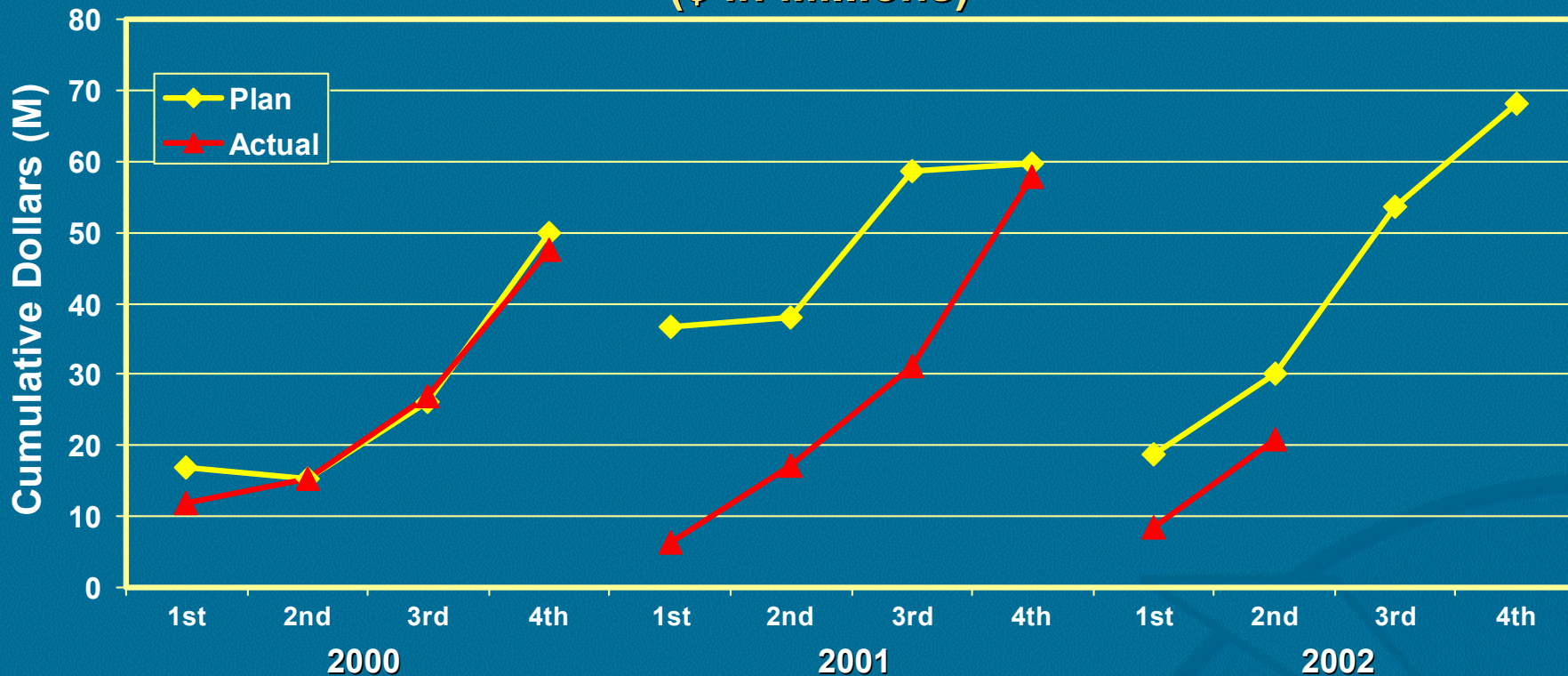
Plan vs. Actual Obligations (\$ in Millions)



Plan	114.6	232.0	395.3	554.0	154.4	303.3	437.2	586.0	148.6	319.2	479.6	640.0
Actual	101.7	250.6	389.7	552.2	125.6	271.4	409.5	580.0	132.3	285.1		
% Variance	11.2%	-8.0%	1.4%	0.3%	18.7%	10.5%	6.4%	1.0%	10.9%	10.7%		

National Weather Service Spending Plan-PAC

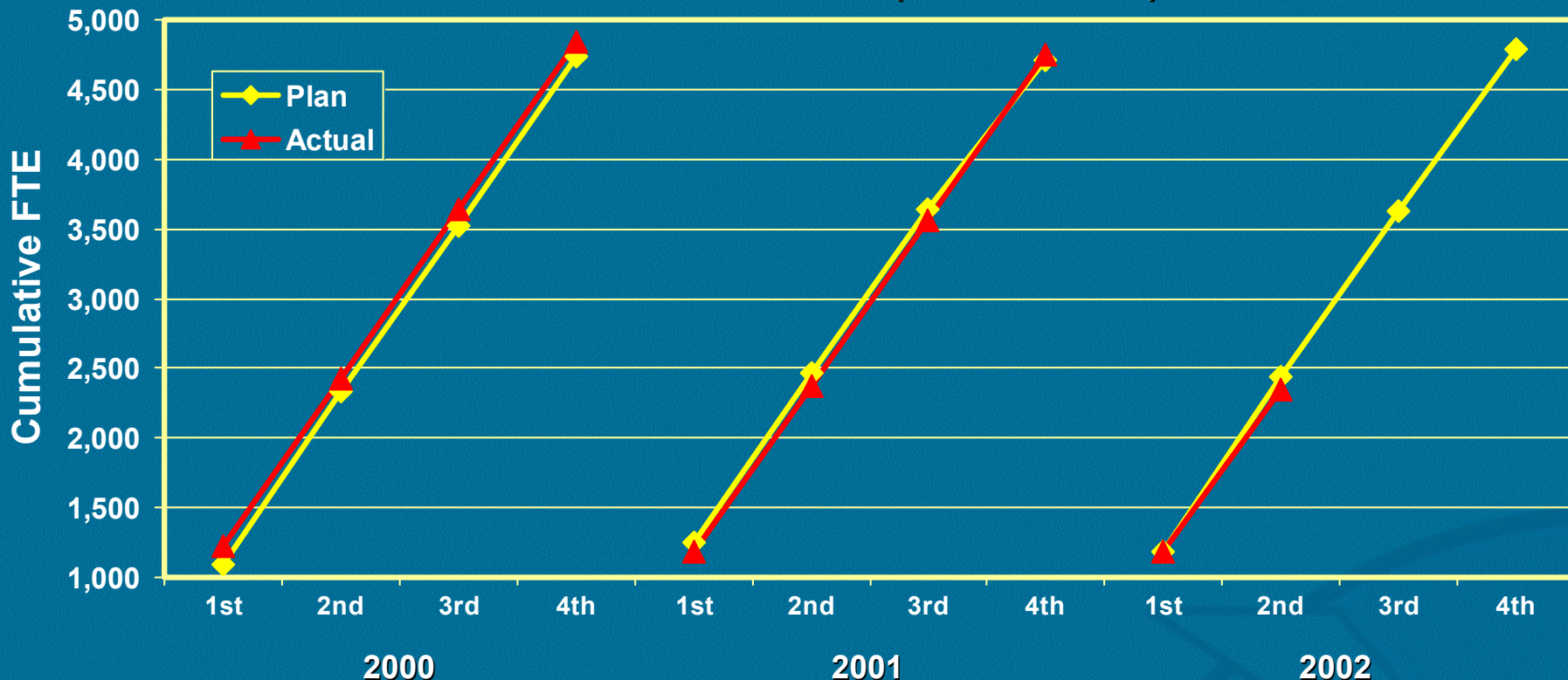
Plan vs. Actual Obligations
(\$ in Millions)



Plan	16.8	15.3	26.1	50.0	36.7	38.1	58.7	59.7	18.8	30.1	53.7	68.0
Actual	11.9	15.4	27.0	47.4	6.4	17.1	31.2	57.8	8.4	20.9		
% Variance	29.0%	-0.8%	-3.6%	5.3%	82.6%	55.1%	46.8%	3.3%	55.3%	30.6%		

National Weather Service FTE

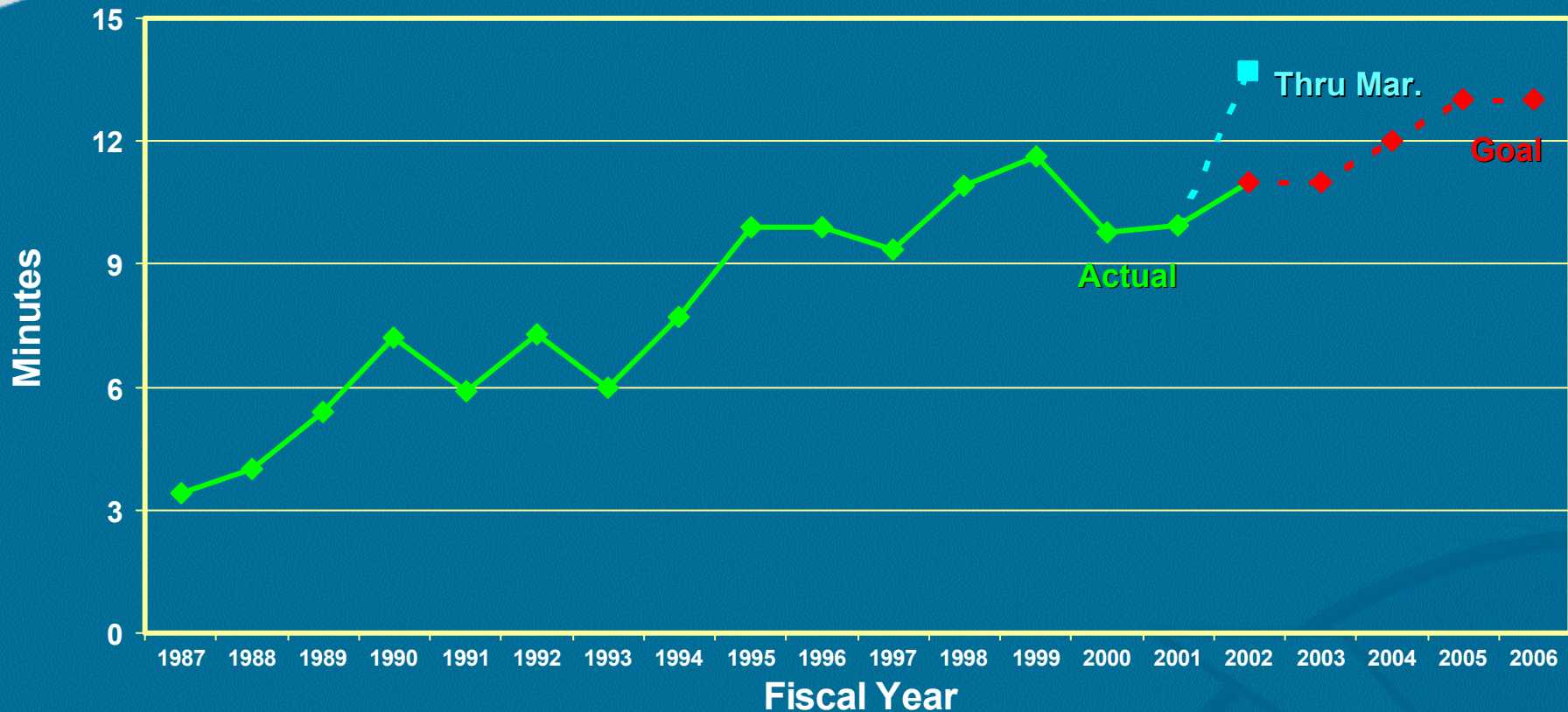
Plan vs. Actual (all sources)



	2000				2001				2002			
Plan	1,090	2,337	3,524	4,739	1,246	2,466	3,641	4,703	1,181	2,445	3,629	4,792
Actual	1,223	2,432	3,643	4,848	1,185	2,371	3,555	4,743	1,186	2,343		
% Variance	12.2%	4.1%	3.4%	2.3%	-4.9%	-3.9%	-2.4%	0.8%	0.5%	-4.2%		

National Weather Service Performance Metrics

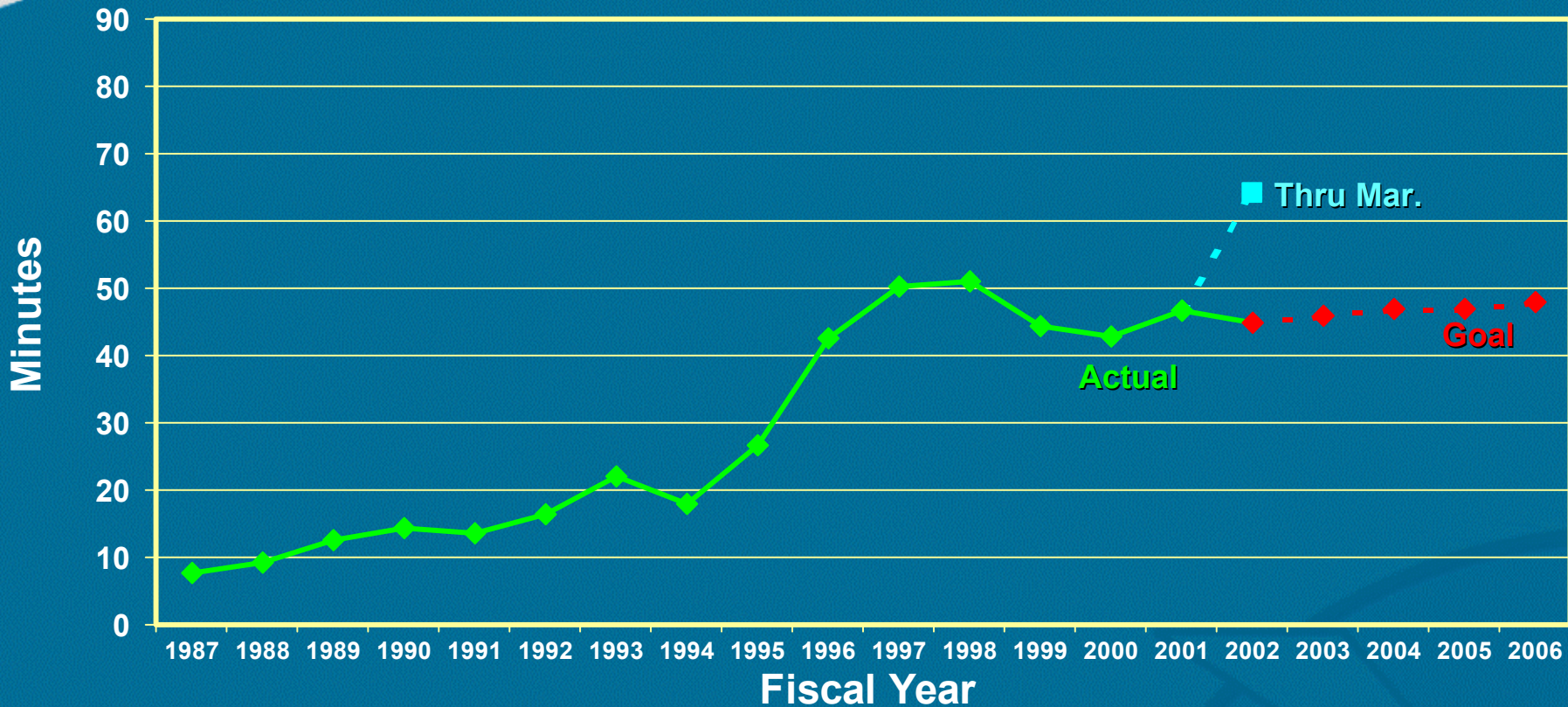
Tornado Lead Time



Goal																11.0	11.0	12.0	13.0	13.0
Actual	3.4	4	5.4	7.2	5.9	7.3	6.0	7.7	9.9	9.9	9.36	10.9	11.6	9.8	10.0					
# Events	667	661	1009	1261	1252	1189	1421	1128	1244	1269	1176	1544	1603	1045	1205					

National Weather Service Performance Metrics

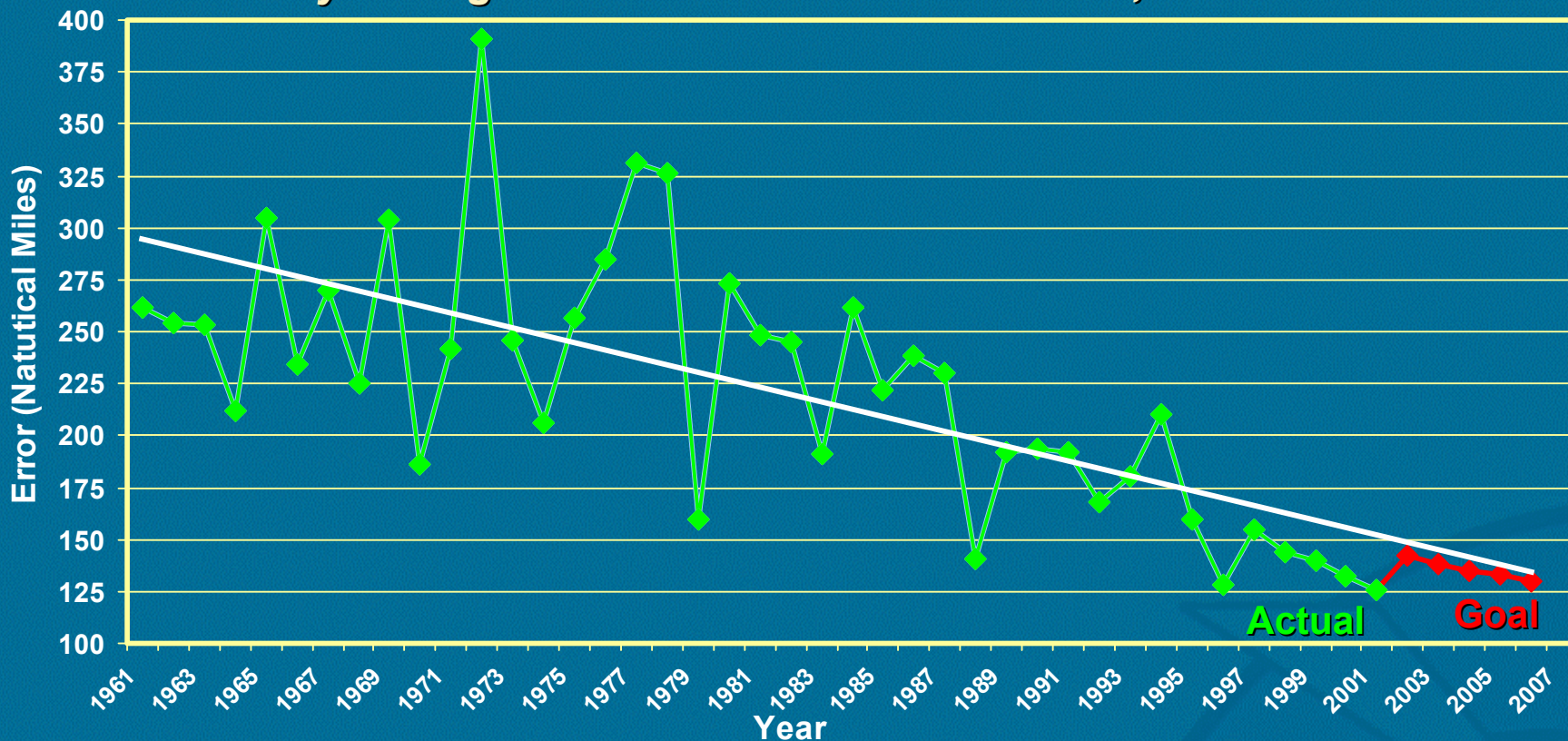
Flash Flood Lead Time



Goal																45.0	46.0	47.0	47.0	48.0
Actual	7.8	9.2	12.5	14.3	13.5	16.5	22.0	17.9	26.6	42.6	50.3	51.0	44.3	42.7	46.6					
# Events	934	436	1367	2320	2015	1722	2108	2190	2437	2793	3229	3142	2713	2324	2779					

National Weather Service Performance Metrics Tropical Prediction Center

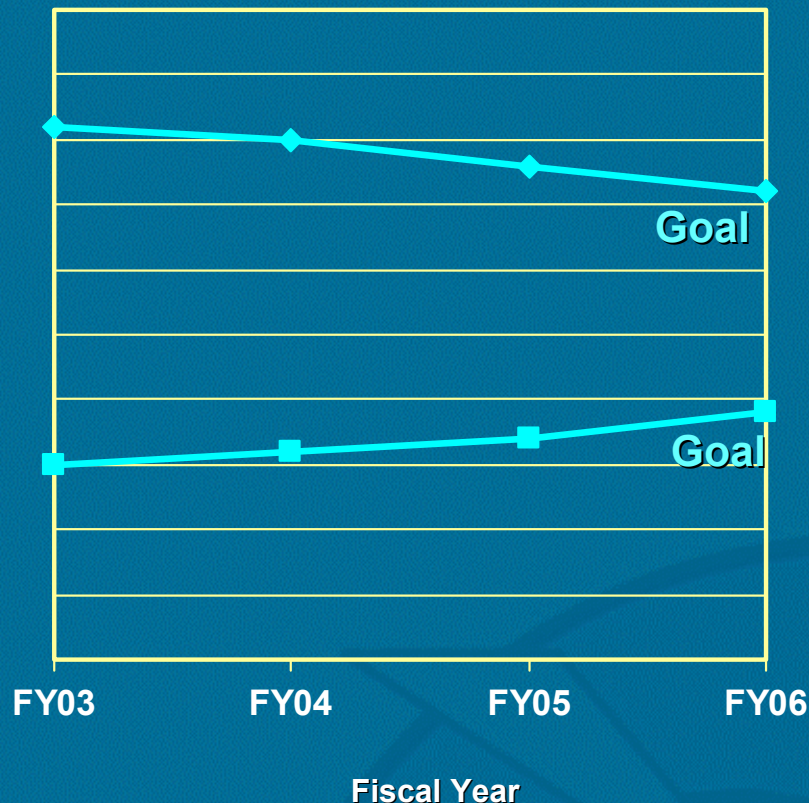
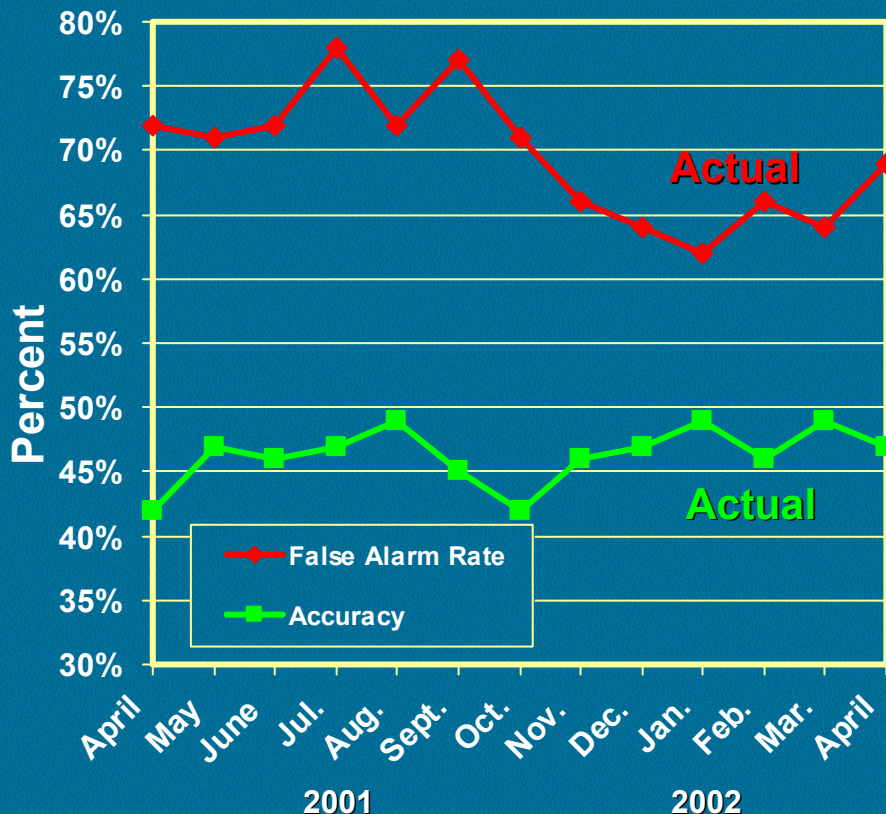
Yearly average 48 Hour Track Forecast Error, Atlantic Basin



	1997	1998	1999	2000	2001	2002	2003	2004	2005	2006
Goal						142	138	135	133	130
Actual	155	144	140	132	126					

National Weather Service Performance Metrics

Aviation Ceiling and Visibility Forecast for Instrument Flight Rules
(500- 1000 ft. ceiling/ 1-3 miles visibility)



FAR	72	71	72	78	72	77	71	66	64	62	66	64	69
POD	42	47	46	47	49	45	42	46	47	49	46	49	47

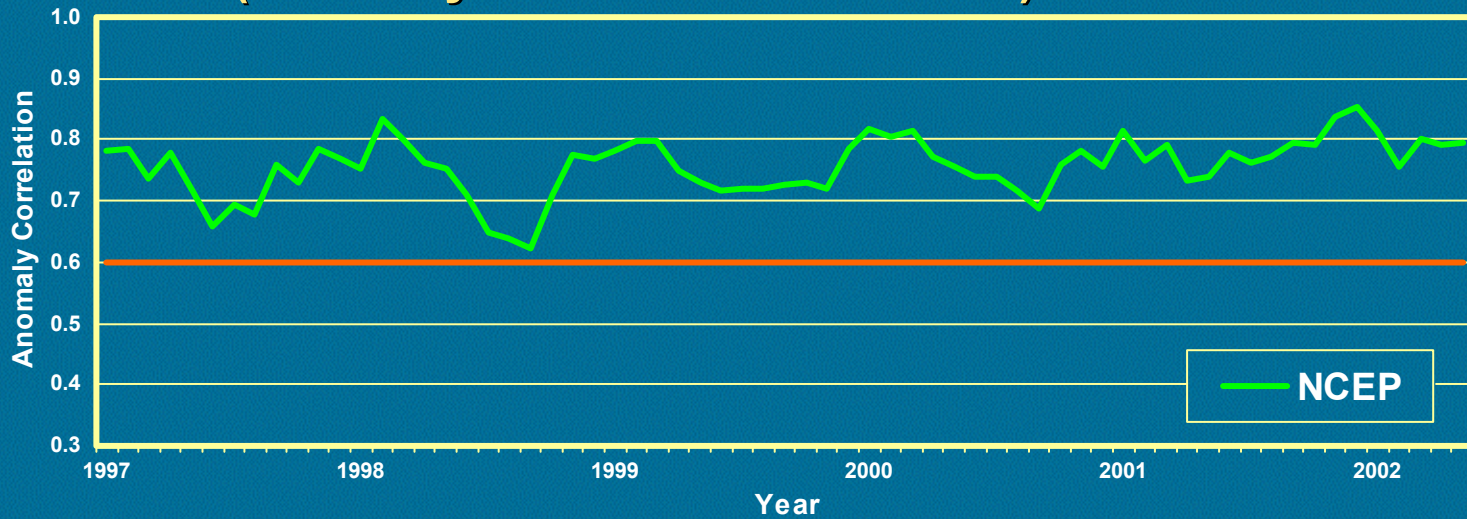
Fiscal Year			
71	70	68	66
45	46	47	49

National Weather Service

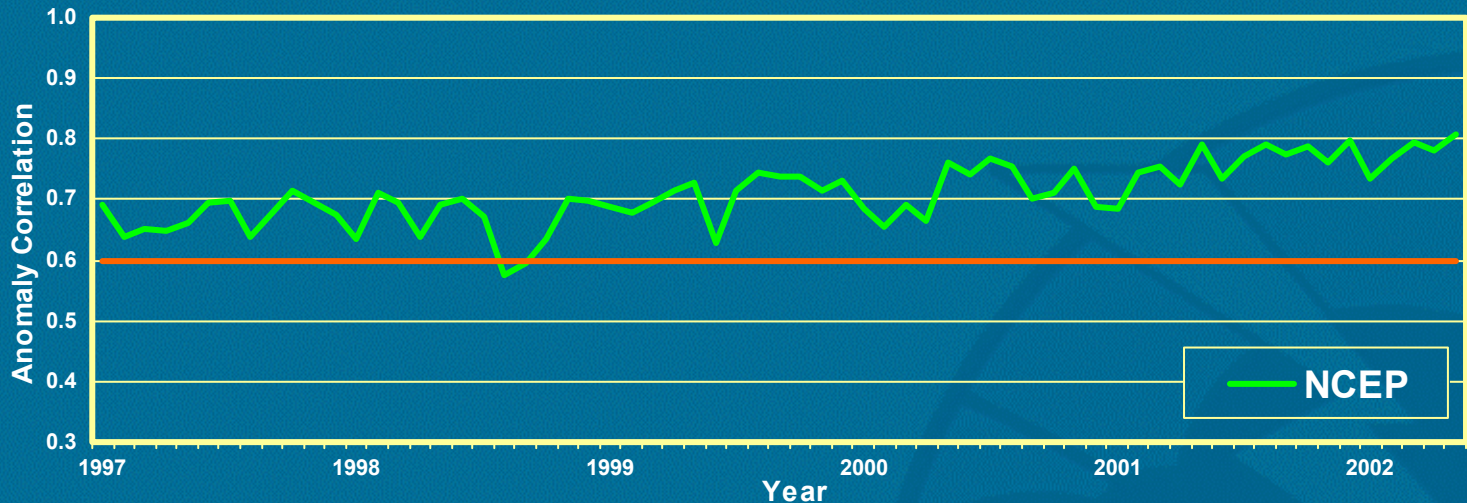
Performance Metrics

Global Weather Model Performance (Anomaly Correlation at 500mb)

Northern Hemisphere



Southern Hemisphere



1= Perfect
0.6= No skill

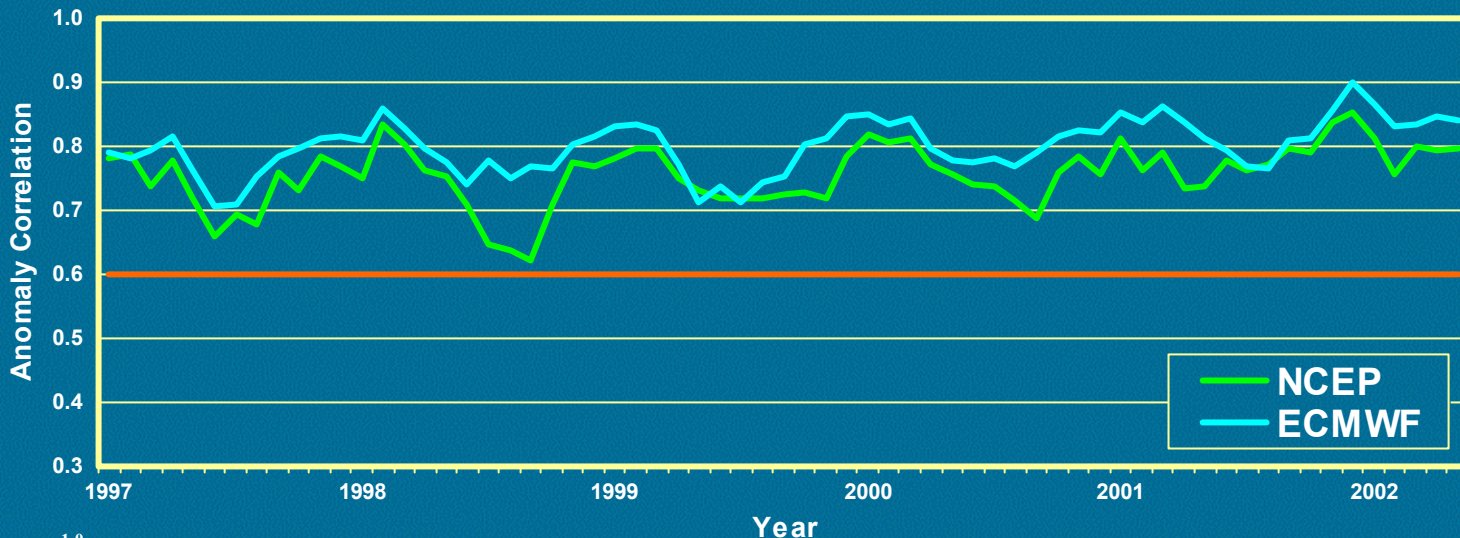
National Weather Service

Performance Metrics

Global Weather Model Performance

(Anomaly Correlation at 500mb)

Northern Hemisphere



Southern Hemisphere



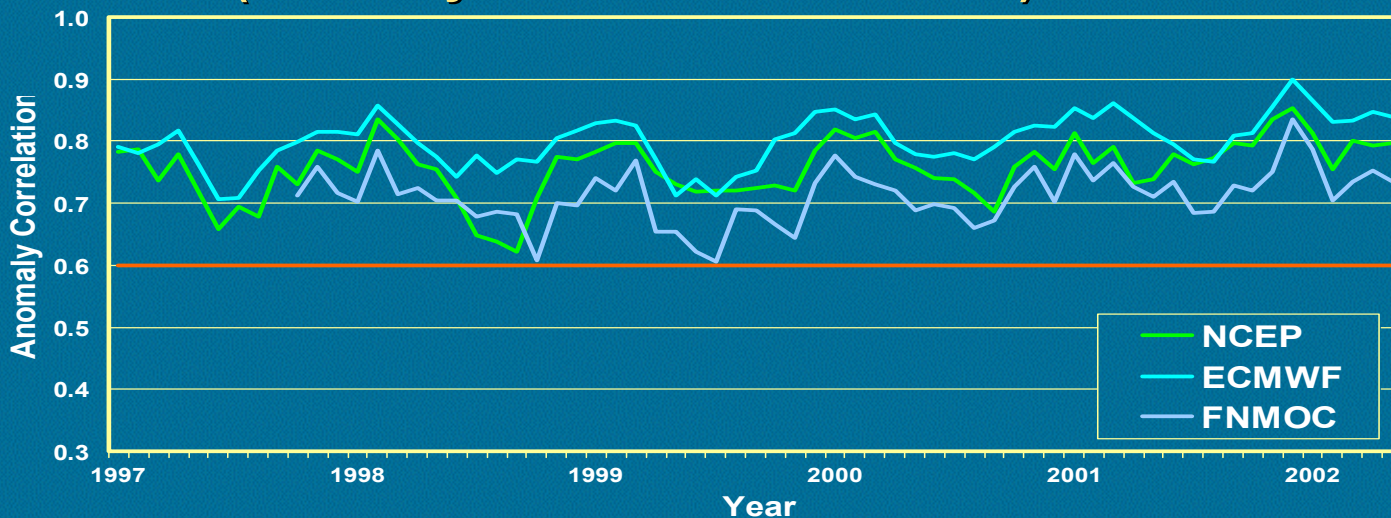
National Weather Service

Performance Metrics

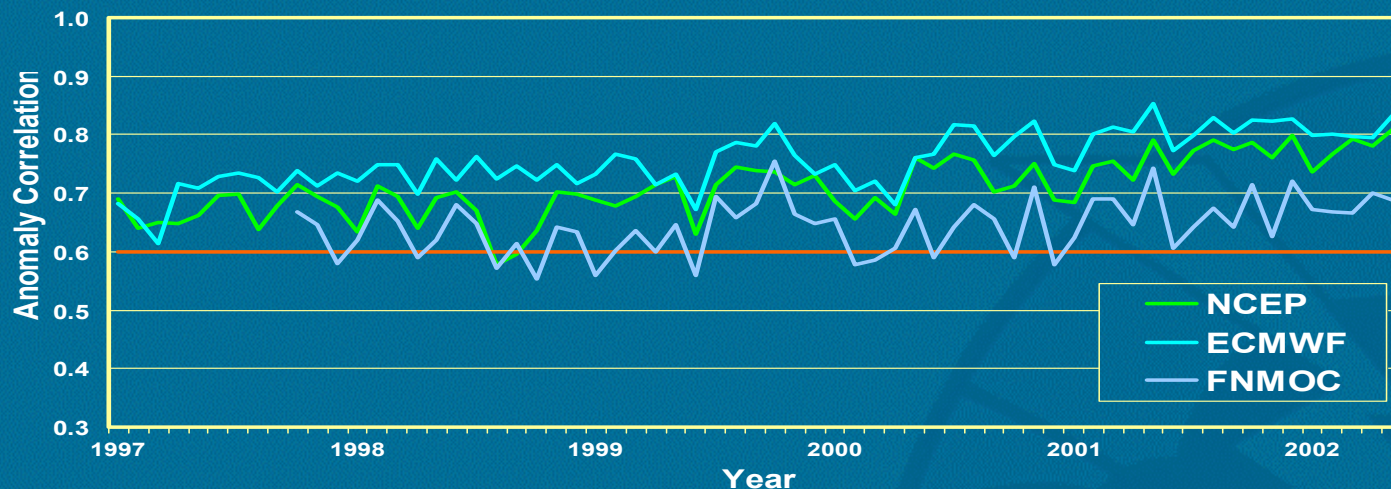
Global Weather Model Performance

(Anomaly Correlation at 500mb)

Northern Hemisphere

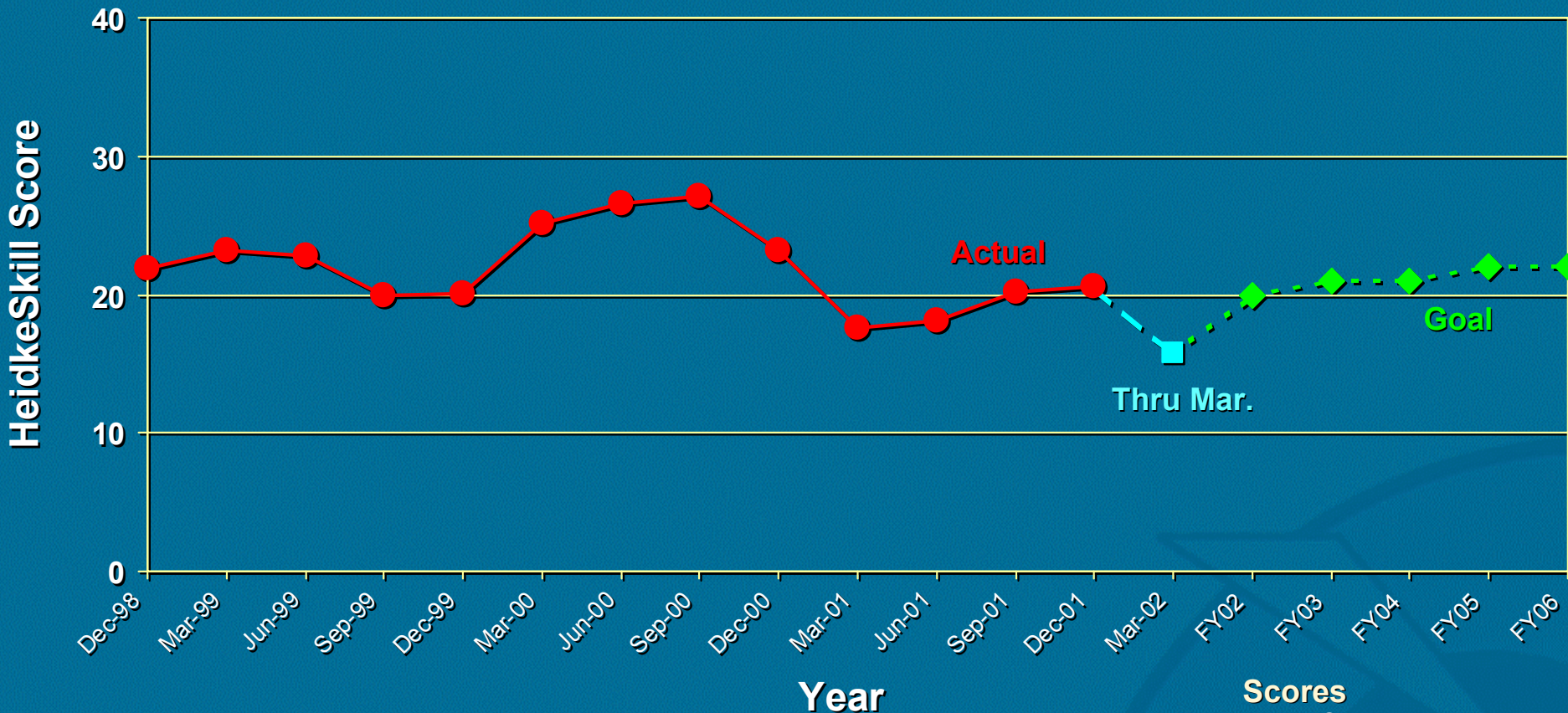


Southern Hemisphere



National Weather Service Performance Metrics

Climate Seasonal Temperature-Forecast Skill



Scores

- 0: Chance
- 20: Good
- ≥ 30: Outstanding

National Weather Service

Safety and Environmental Compliance

Overall Accomplishments

- Established safety and environmental compliance as a top priority for NWS managers and employees
- Reallocated resources in FY01 and FY02 to fund safety and environmental compliance needs

Safety Accomplishments

- Published NWS Safety Policy and Procedures (FY01)
- Completing Safety and Fall Protection/Rescue Training in FY02

Environmental Compliance Accomplishments

- Published NWS Environmental Policy & Completed Training (FY01)
- Updating Oil Spill Prevention Plans for 113 NWS Sites by FY03.
As of May 2002, 34% Complete.

National Weather Service

Safety and Environmental Compliance

Program Spending

- 40% spending increase from FY00 to FY02:
 - FY 2000: \$1.99M
 - FY 2001: \$3.04M
 - FY 2002: \$3.36M



Performance Measures

Audits: Average Findings Per Site

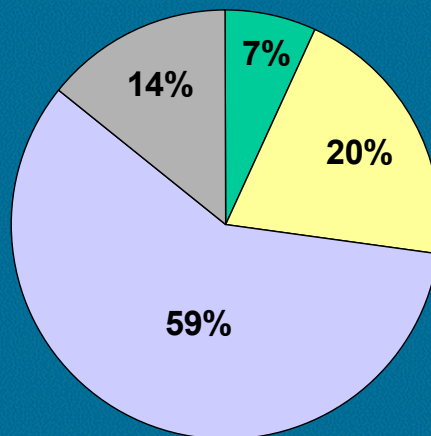
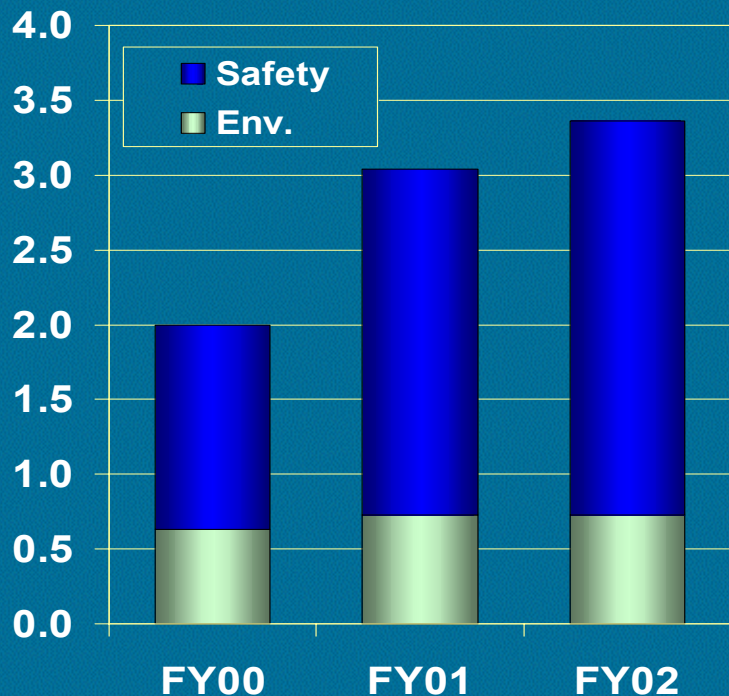
	FY99	FY00	FY01	FY02 thru May 31	Goal by FY05
Safety	9.20	9.00	9.25	4.50 *2 of 8 FY02 sites	4.50
Environmental	1.60	.70	.75	3.00	1.00

Safety-Employee Accidents Per Year

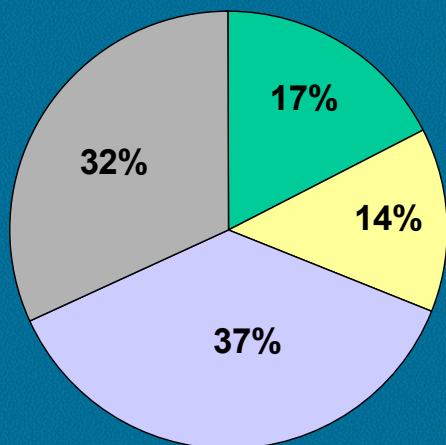
Accident	47	27	44	32	TBD
----------	----	----	----	----	-----

National Weather Service

Safety and Environmental Compliance



Safety:
\$2.658 M



Environmental:
\$0.701 M

National Weather Service

Safety and Environmental Compliance

Challenges

- *Culture*
- *Resources*
- *Data Reporting - Accidents*