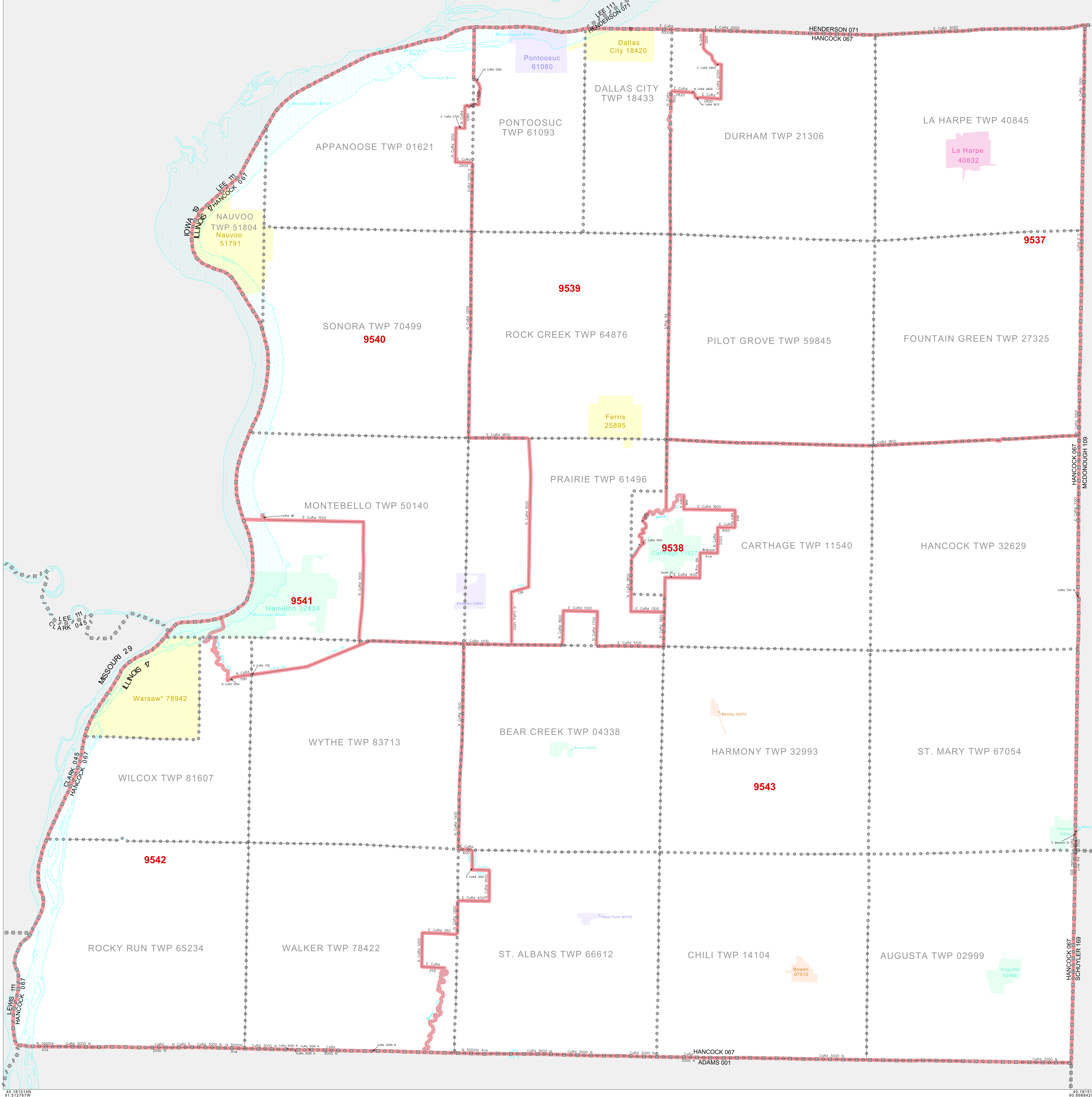


CENSUS TRACT OUTLINE MAP (CENSUS 2000)

40.650776N
91.512767W

40.650776N
90.898427W



ABBREVIATED LEGEND

SYMBOL	NAME STYLE
☆☆☆☆	INTERNATIONAL
*****	AIR (FEDERAL)
*****	Trust Land
*****	OTSA / TDSA
*****	TRIBAL SUBDIVISION
*****	AIR (State)
*****	SDA/SA
*****	STATE
*****	COUNTY
*****	MINOR CIVIL DIV' Consolidated City
*****	Incorporated Place'
*****	Census Designated Place'
*****	Census Tract

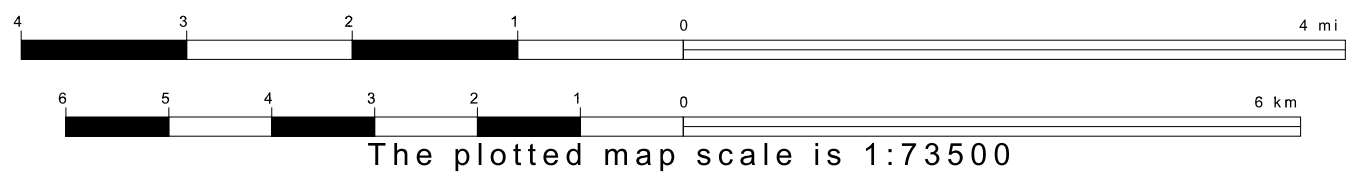
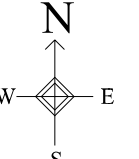
Abbreviation Reference: AIR = American Indian Reservation; Trust Land = OIP-Reservation Trust Land; OTSA = Oklahoma Tribal Statistical Area; TDSA = Tribal Designated Statistical Area; Tribal Subdivision = American Indian Tribal Subdivision; SDA/SA = State Designated American Indian Statistical Area

1 "A" following a place name indicates that the place is coterminous with a MCD. "A'" indicates that the place is also a false MCD. In both cases, the MCD name is shown only when it differs from the place name.

FEATURES	FEATURES
All Roads	Stream/Shellline
Railroad	Intermittent Stream
Place/Place Line	River/Lake
Physical Feature	Glacier
Visible Boundary	

40.181514N
91.512767W

40.181514N
90.898427W



All legal boundaries and names are as of January 1, 2000. The boundaries shown on this map are for Census Bureau statistical data collection and tabulation purposes only; their depiction and designation for statistical purposes does not constitute a determination of jurisdictional authority or rights of ownership or entitlement. U.S. DEPARTMENT OF COMMERCE Economics and Statistics Administration U.S. Census Bureau

ST: Illinois (17)
COU: Hancock (067)
SHEET 1 OF 1 PARENT SHEET

