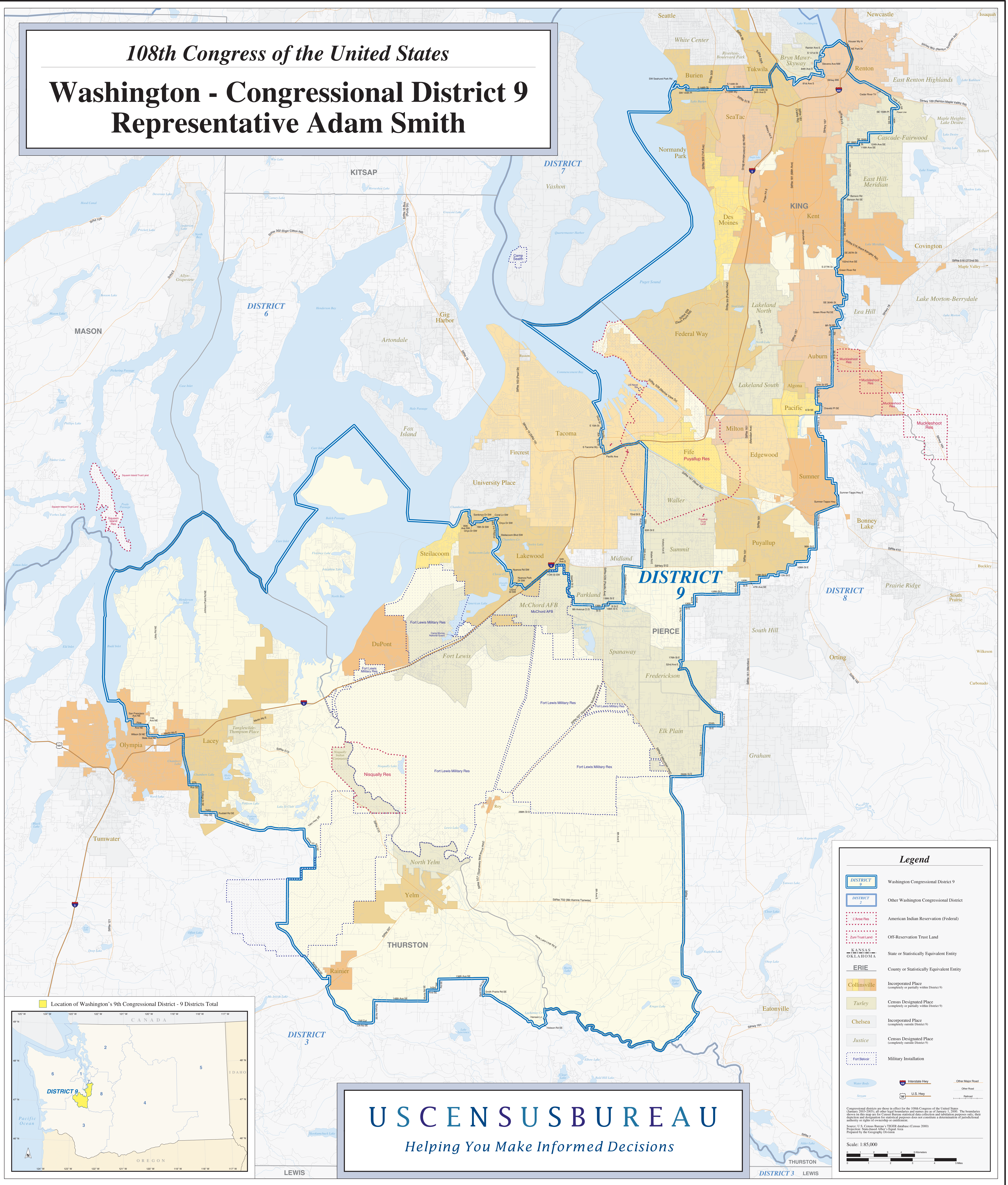


108th Congress of the United States

Washington - Congressional District 9 Representative Adam Smith



USCENSUSBUREAU
Helping You Make Informed Decisions

Legend

- DISTRICT 9** Washington Congressional District 9
- DISTRICT 3** Other Washington Congressional District
- L'Arrée Res** American Indian Reservation (Federal)
- Zuni Trust Land** Off-Reservation Trust Land
- KANSAS OKLAHOMA** State or Statistically Equivalent Entity
- ERIE** County or Statistically Equivalent Entity
- Collinsville** Incorporated Place (completely or partially within District 9)
- Turley** Census Designated Place (completely or partially within District 9)
- Chelsea** Incorporated Place (completely outside District 9)
- Justice** Census Designated Place (completely outside District 9)
- Fort Belvoir** Military Installation
- Water Body** Water Body
- Stream** Stream
- Interstate Hwy** Interstate Highway
- U.S. Hwy** U.S. Highway
- Other Major Road** Other Major Road
- Other Road** Other Road
- Railroad** Railroad

Congressional districts are those in effect for the 108th Congress of the United States (January 2003-2005); all other legal boundaries and names are as of January 1, 2000. The boundaries shown on this map are for Census Bureau statistical data collection and tabulation purposes only; their accuracy and suitability for statistical purposes does not constitute a determination of jurisdictional authority or rights of ownership or control.

Source: U.S. Census Bureau's TIGER database (Census 2000) Projected Subcounty Other Features
Prepared by the Geography Division

Scale: 1:85,000

0 1 2 3 4 Kilometers
0 1 2 3 4 Miles

