

RNAV (GPS) RWY 28

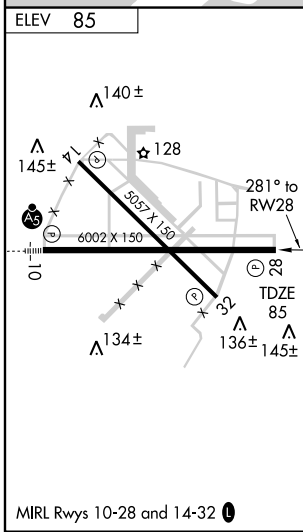
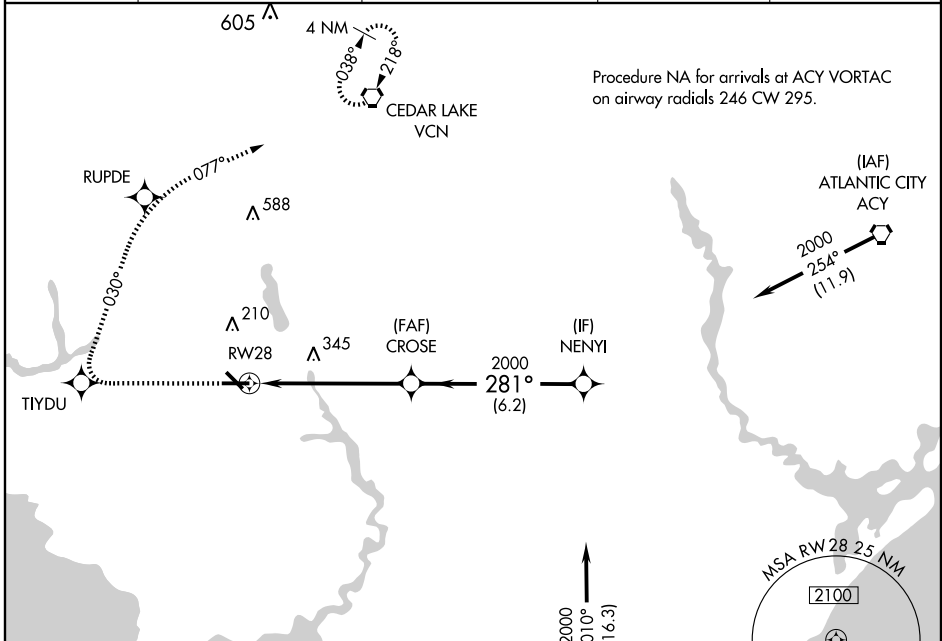
MILLVILLE MUNI (MIV)

WAAS Ch 42700 W28A	APP CRS 281°	Rwy Idg TDZE Apt Elev	6002 85 85
--	------------------------	-----------------------------	---------------------------------------

▼ DME/DME RNP-0.3 NA.
For uncompensated Baro-VNAV systems, LNAV/VNAV NA below -15°C (5°F) or above 49°C (120°F).

MISSED APPROACH: Climb to 2000 direct TIYDU and right turn via 030° track to RUPDE and right turn 077° track to VCN VORTAC and hold.

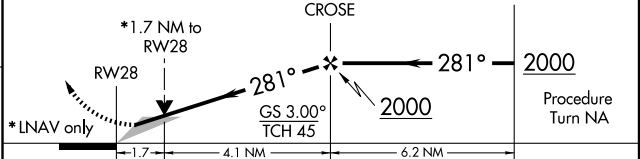
ASOS 128.125	ATLANTIC CITY APP CON 124.6 327.125	MILLVILLE RADIO 123.65	UNICOM 123.0	(CTAF) 123.65
------------------------	---	----------------------------------	------------------------	----------------------



Procedure NA for arrivals at SIE VORTAC on airway radials 333 CW 059.

(IAF) SEA ISLE SIE

2000 TIYDU	RUPDE	VCN	VSGI and RNAV glidepath not coincident.
030° TRK	077° TRK		



CATEGORY	A	B	C	D
LPV DA		344-1	259 (300-1)	
LNAV/VNAV DA		405-1	320 (400-1)	
LNAV MDA	640-1	555 (600-1)	640-1½ 555 (600-1½)	640-1¾ 555 (600-1¾)
CIRCLING	640-1	555 (600-1)	640-1½ 555 (600-1½)	640-2 555 (600-2)

NE-2, 15 JAN 2009 to 12 FEB 2009

NE-2, 15 JAN 2009 to 12 FEB 2009