

LUFKIN, TEXAS

AL-870 (FAA)

RNAV (GPS) RWY 33

LUFKIN/ ANGELINA COUNTY (L.F.K)

APP CRS 335°	Rwy Idg TDZE Apt Elev	4204 286 296
------------------------	-----------------------------	---

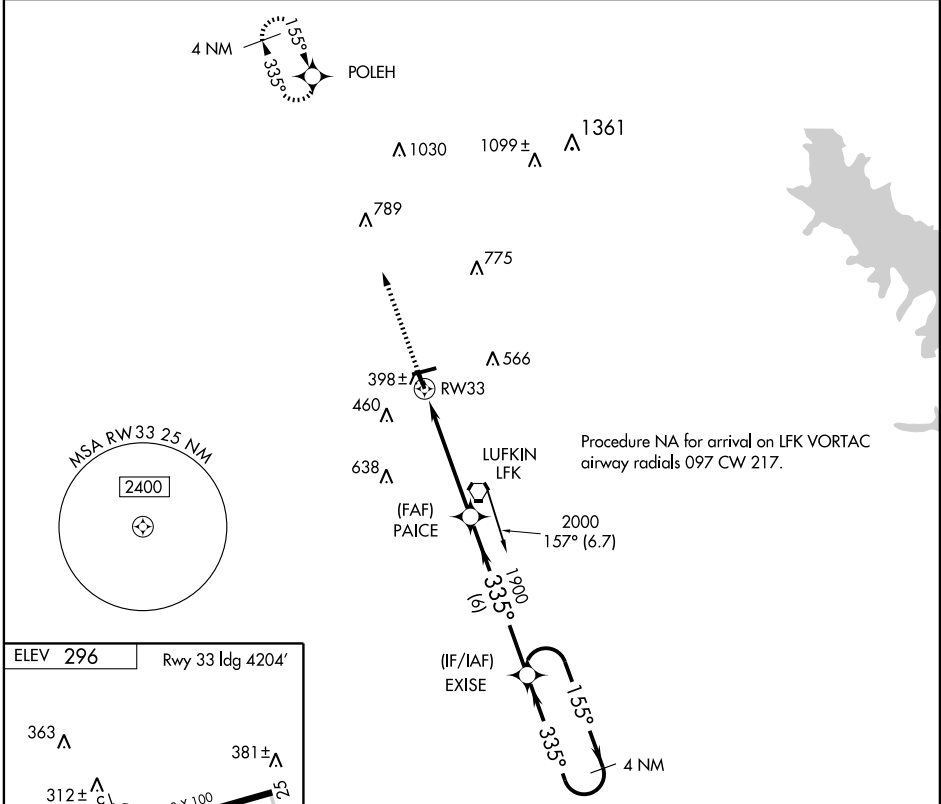
DME/DME RNP- 0.3 NA.

MISSED APPROACH: Climb to 2100 direct POLEH and hold.

ASOS
120.625

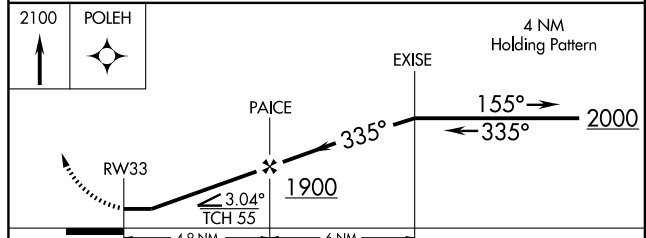
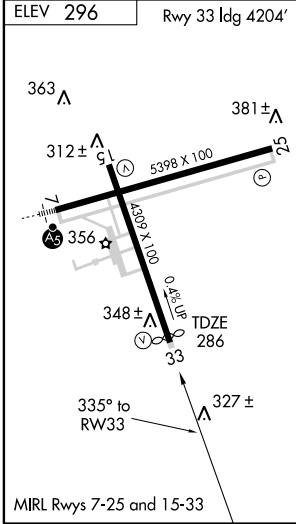
HOUSTON CENTER
125.17 285.57

UNICOM
123.0 (CTAF) **0**



SC-5, 28 AUG 2008 to 25 SEP 2008

SC-5, 28 AUG 2008 to 25 SEP 2008



CATEGORY	A	B	C	D
LNAV MDA	660-1 374 (400-1)			NA
CIRCLING	740-1 444 (500-1)	760-1 464 (500-1)	760-1½ 464 (500-1½)	NA

LUFKIN, TEXAS
Amdt 1 08157

31° 14' N-94° 45' W

LUFKIN/ ANGELINA COUNTY (L.F.K)
RNAV (GPS) RWY 33