



---

ARMYTEK CATALOGUE

---

2017





# Contents



<b>Armytek Company History</b> .....	<b>5</b>	<b>Searchlights</b> .....	<b>24</b>
<b>Multi-flashlights</b> .....	<b>8</b>	Barracuda .....	25
Tiara C1 / Tiara A1 .....	9	Barracuda Pro .....	26
Tiara C1 Pro / Tiara A1 Pro .....	10	<b>Every Day Carry Lights</b> .....	<b>27</b>
Wizard .....	11	Prime C1 / Prime A1 / Prime A2 .....	28
Wizard Pro .....	12	Prime C2 .....	29
<b>Tactical Flashlights</b> .....	<b>13</b>	Prime C1 Pro / Prime A1 Pro / Prime A2 Pro .....	30
Predator .....	14	Prime C2 Pro .....	31
Predator Pro .....	15	<b>Accessories</b> .....	<b>32</b>
Viking .....	16	Mounts / Remote switch .....	33
Viking Pro .....	17	Filters / Grease .....	34
Dobermann .....	18	Rechargeable and non-rechargeable batteries .....	35
Dobermann Pro .....	19	<b>How To Choose A Flashlight Easily</b> .....	<b>37</b>
Partner C1 / Partner A1 / Partner A2 .....	20	<b>Comparison tables:</b>	
Partner C1 Pro / Partner A1 Pro / Partner A2 Pro ..	21	Multi-flashlights .....	39
Partner C2 / Partner C4 .....	22	Tactical Flashlights .....	40
Partner C2 Pro / Partner C4 Pro .....	23	Tactical Flashlights / Searchlights .....	41
		Every Day Carry Lights .....	42



*Our Mission is to provide people  
with the most reliable and technically  
advanced light in the world.*

Canada

USA

Europe

Russia

China





—since—  
**2007** Armytek  
Optoelectronics Inc.  
Ontario, Canada



# History of the Armytek Company

**L**et's start from the middle. Legally **Armytek Optoelectronics Inc.** was registered by Olga Khanoutin, the company's President, in the beginning of the 2010 in Ontario, **Canada**.

But everything began much earlier. Starting from **2007** we have taken part in more than 50 international exhibitions in different continents. Now our product line consists of **32 models** which are represented in **32 countries** of the world, but in the nearest future there will be more than **40 models of flashlights and 12 kinds of original accessories**, which altogether will cover every significant sphere. Our corporation has multiple patents worldwide.

And you are able to throw almost all our flashlights from **10<sup>th</sup> floor** height and submerge them at **50 meters**.

**Why?** We've just put in such great margin of safety. **10 year no-hassle warranty**.

We bust myths. No more compromises. Forget everything you've known about flashlights before.

## So what distinguishes us from other companies?

- Canadian manufacturer and own factory.
- Designed especially for your needs.
- The team of scientists and engineers engaged in military and space industry.
- The best and tried-and-true components by the USA and Japan.
- Particular attention to durability and technologies, not only to external design.

Our Mission is to provide people with the most reliable and technically advanced light in the world.

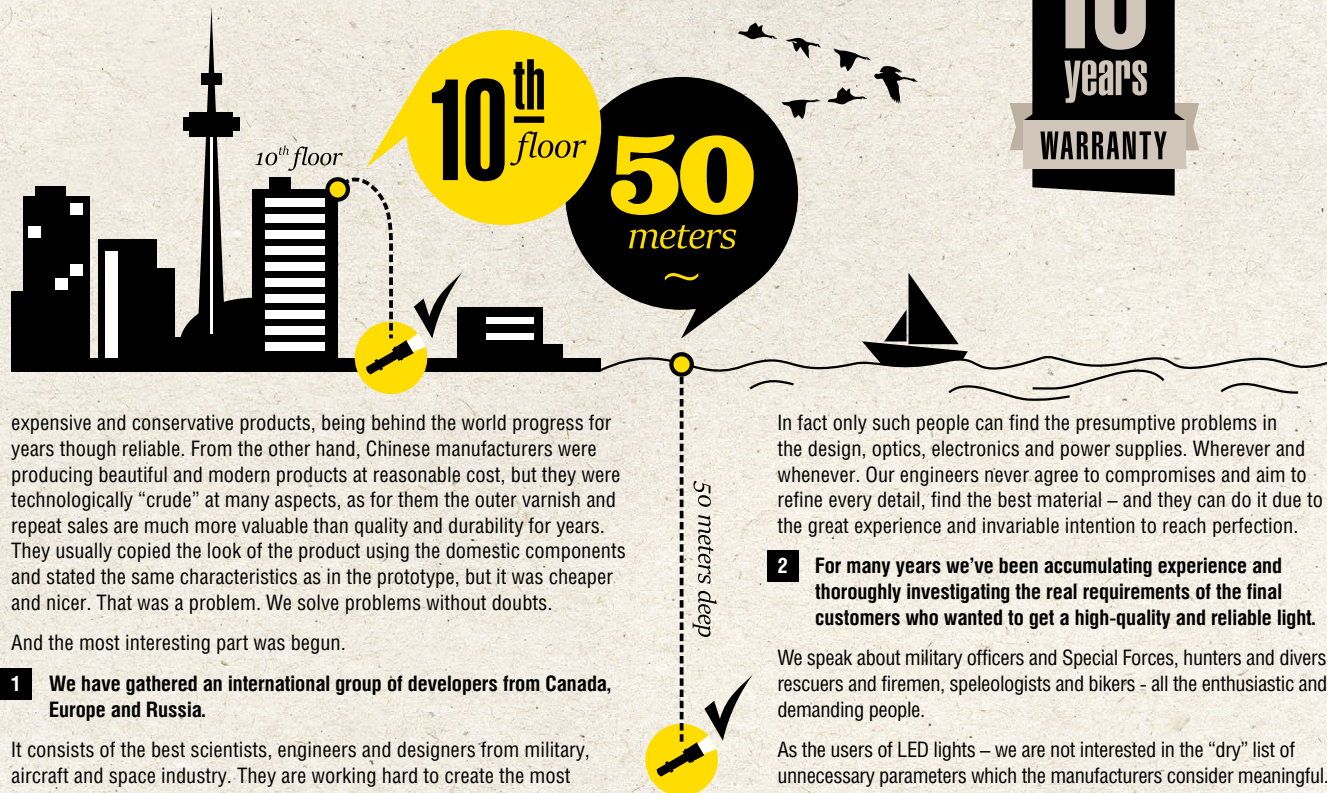
## How it was made?

We've got interested in LED lighting in 2007 and just like everyone – have become its active users because of its efficiency and convenience. But European and American companies present at that time at LED market offered



# 10 years

## WARRANTY



expensive and conservative products, being behind the world progress for years though reliable. From the other hand, Chinese manufacturers were producing beautiful and modern products at reasonable cost, but they were technologically “crude” at many aspects, as for them the outer varnish and repeat sales are much more valuable than quality and durability for years. They usually copied the look of the product using the domestic components and stated the same characteristics as in the prototype, but it was cheaper and nicer. That was a problem. We solve problems without doubts.

And the most interesting part was begun.

### **1 We have gathered an international group of developers from Canada, Europe and Russia.**

It consists of the best scientists, engineers and designers from military, aircraft and space industry. They are working hard to create the most innovative and technically advanced flashlights in the world. It's amazing that secret military technologies can uncompromisingly serve the humanity.

In fact only such people can find the presumptive problems in the design, optics, electronics and power supplies. Wherever and whenever. Our engineers never agree to compromises and aim to refine every detail, find the best material – and they can do it due to the great experience and invariable intention to reach perfection.

### **2 For many years we've been accumulating experience and thoroughly investigating the real requirements of the final customers who wanted to get a high-quality and reliable light.**

We speak about military officers and Special Forces, hunters and divers, rescuers and firemen, speleologists and bikers - all the enthusiastic and demanding people.

As the users of LED lights – we are not interested in the “dry” list of unnecessary parameters which the manufacturers consider meaningful. The product we need has to fit our real-world requirements and embrace the features that are valuable and unique especially for us.



more than  
**50**  
international  
exhibitions  
— ★ ★ ★ —

- 3** To create reliable lighting products we completely refused to apply Chinese components from the domestic market i.e. cheap analogs of well-known brands.

We decided to implement in our products only the best LEDs and cutting-edge electronics made in Japan and the USA to obtain the revolutionary and unprecedented results.

We've created our first tactical flashlight "Predator" from the ground up, and it has compiled in itself a plenty of innovative solutions (in which at the beginning many people even refused to believe). Leaping ahead we may say that Chinese manufacturers haven't even been able to replicate our technologies using cheap components so they've just copied its names without real implementing in the products (e.g. Firefly Technology). Meanwhile we started the hard tests of Predator in severe conditions of torrid the USA deserts and frosts of north Canada and Russia.

- 4** In 2009 we have made a strategically right decision to open an own factory in China.

It was made to enable us to provide our customers all over the world with robust and submersible high-tech flashlights at the best prices and in the shortest time. The great characteristics of our lights are for years confirmed by the reviewers' measurement, opinions of real users and positive feedback of Special Forces.

Nowadays our manufacture is a 6-floor building containing all the modern production facilities, high-end equipment, ultra reliable materials and special system of quality-control.



REPRESENTED IN  
**32**  
COUNTRIES

- 5** Our name "Armytek" wasn't chosen accidentally. It's the reflection of the main idea: the army requirements to the reliability of our products and the latest world technologies in use.

Here's an amazing fact – when we use the most advanced technologies on the edge of possibilities we discover the real engineers' art – to find the ideal solution that will give the highest possible features, valuable to each customer group.

Branches of our corporation are scattered all over the world. This is because a small group of professionals turned into a solid team of likeminded people, active and ambitious. We are totally sure in the result we reach and are really interested in the thing we do for you.

These advantages that distinguish us from our competitors enabled us to enter the new stage in the development and take a worthy place at the LED lighting market.

We successfully maintain the sale of our products made with advanced technologies. For the past few years we've established contacts with clients on more than 30 countries. Armytek bases the partnership upon trust and tries to satisfy the most daring requirements of its customers. Constant and continuous feedback enables us to react fast to the customers' needs and improve our products each time overriding ourselves.

Our team is totally goal-oriented, that allows us to look forward straightly and confidently and not only to keep pace with the time, but to move ahead, setting the trend.

more than  
**40**  
models  
of flashlights





*Multi-flashlights*



# Tiara C1

## MULTI-FLASHLIGHT

Modes: 6 • Head: 29 mm • Body: 24.5 mm

Cree XP-L

LED

White or warm light

800 lumens • 93 meters

Length: 72 mm • Weight: 45 g  
1x18350 Li-Ion • 1xR123 Li-Ion • 1xCR123A

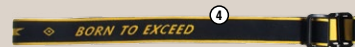


NEW electronics, optics and construction!



### What's included:

- 1 - clip
- 2 - silicone holder
- 3 - 2 spare O-rings
- 4 - headband



### OPTICS TYPE & HOTSPOT-SPILL



### PEAK BEAM INTENSITY



### BRIGHTNESS STABILIZATION



### RUNTIME MIN & MAX



### WATERPROOF & SUBMERSIBLE



### IMPACT RESISTANCE



## Light-weight, durable & waterproof

Made of aircraft-grade aluminum using the Slim Profile Technology in combination with functional ergonomic design. Guaranteed durability – stands up harsh impacts and falling from 10 meters height. The flashlight works for 2.5 hours at 10 meters depth.

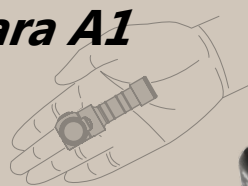
## Efficient TIR-optics & impressive brightness

Compact-sized flashlight with powerful light powered by only one AA / CR123A battery. Effective TIR-optics for even area illumination at the distance and no effect of «tunnel vision» even during continuous use.

## Easy operation & 6 brightness modes

Side switch on the head for quick and easy one-hand operation. Wide output choice for various spheres of application: from ultra-bright Maximum mode to ultra-low Firefly.

# Tiara A1



600 lumens • 86 meters

Length: 86 mm • Weight: 48 g  
1xAA • 1x14500 Li-Ion



# Tiara C1 PRO

## MULTI-FLASHLIGHT

Modes: 10 • Head: 29 mm • Body: 24.5 mm

Cree XP-L

LED

White or warm light

800 lumens • 93 meters

Length: 79 mm • Weight: 56 g

1x18350 Li-Ion • 1xR123 Li-Ion • 1xCR123A



NEW electronics, optics and construction!



### What's included:

- 1 - clip
- 2 - silicone holder
- 3 - 2 spare O-rings
- 4 - headband
- 5 - handband
- 6 - lanyard
- 7 - lanyard ring
- 8 - magnet

## Multi-flashlights

### OPTICS TYPE & HOTSPOT-SPILL



### PEAK BEAM INTENSITY



### BRIGHTNESS STABILIZATION



### RUNTIME MIN & MAX



### WATERPROOF & SUBMERSIBLE



### IMPACT RESISTANCE



## Designed for at least 10 applications

Multi-flashlights "10 in 1": car, fishing, hunting, home, work, city, picnic, bike, outdoor, travel. Removable clip and magnet in the tailcap, strong lanyard, convenient headband and possibility of tail-stand for comfortable multipurpose use.

## Efficient TIR-optics & constant bright light

Wide light without sharp edges due to TIR-optics. No "tunnel vision" effect after continuous use. Flat Runtime Technology for constant brightness even in -25°C or with almost discharged batteries.

## Low battery indication

Multicolor Warning Indication provides information about low battery level and high temperature. Multicolor State Indication and ultra low current drain in OFF-state is more than 25 years.

# Tiara A1 PRO

600 lumens • 86 meters

Length: 93 mm • Weight: 59 g

1xAA • 1x14500 Li-Ion







**NEW** electronics, optics and construction!

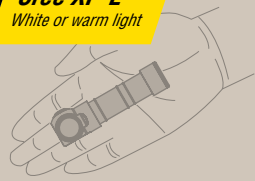
Multi-flashlights

# Wizard Magnet USB

**MULTI-FLASHLIGHT**

Modes: 6 • Length: 101 mm • Head: 29 mm • Body: 24.5 mm • Weight: 48 g

**LED** Cree XP-L  
White or warm light



**What's included:**

- 1 - clip
- 2 - plastic holder
- 3 - magnet USB charger
- 4 - 2 spare O-rings
- 5 - 18650 Li-Ion battery
- 6 - headband



**1250 lumens**

1x18650 Li-Ion • 2x18350 Li-Ion • 2xCR123A

**119 meters**

**Extreme light brightness**

The use of unique electronics enabled us to create the world's first headlamp with 1250 LED lm brightness, which remains constant during the whole operation time of the flashlight.

**USB-rechargeable, but IP68 waterproof and dustproof**

Made of aircraft-grade aluminum using the Slim Profile Technology in combination with functional ergonomic design. Guaranteed durability – stands up harsh impacts and falling from 10 meters height. The flashlight can work for more than 2 hours at 10 meters depth.

**Efficient TIR-optics**

The most efficient TIR-optics provides even wide light at the distance up to 119 meters and perfectly suits for either close application or a huge area illumination. Continuous use without an effect of "tunnel vision".

**Reliable mount & comfortable operation**

Comfortable headband for reliable fixation of the flashlight – it won't slip even while you're running. Side switch and the function of quick access to the main modes guarantees a simple one-hand operation. The flashlight won't shift or slide down from the head.

OPTICS TYPE & HOTSPOT-SPILL    PEAK BEAM INTENSITY    BRIGHTNESS STABILIZATION



**RUNTIME MIN & MAX**

**WATERPROOF & SUBMERSIBLE**

**IMPACT RESISTANCE**





**NEW** electronics, optics  
and construction!

Multi-flashlights

# Wizard PRO Magnet USB

**MULTI-FLASHLIGHT**

Modes: 11 • Length: 108 mm • Head: 29 mm • Body: 24.5 mm • Weight: 59 g

**LED** Cree XHP50  
White or warm light

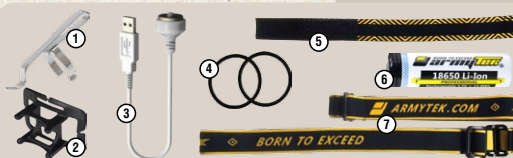


**2300 lumens**  
1x18650 Li-Ion

130 meters

## What's included:

- 1 - clip
- 2 - plastic holder
- 3 - magnet USB charger
- 4 - 2 spare O-rings
- 5 - handband
- 6 - 18650 Li-Ion battery
- 7 - headband



## Extreme light brightness

The use of unique electronics enabled us to create the world's first headlamp with 2300 LED lm brightness, which remains constant during the whole operation time of the flashlight.

## USB-rechargeable, but IP68 waterproof and dustproof

Made of aircraft-grade aluminum using the Slim Profile Technology in combination with functional ergonomic design. Guaranteed durability – stands up harsh impacts and falling from 10 meters height. The flashlight can work for more than 2 hours at 10 meters depth.

## Efficient TIR-optics

The most efficient TIR-optics provides even wide light at the distance up to 130 meters and perfectly suits for either close application or a huge area illumination. Continuous use without an effect of "tunnel vision".

## Reliable mount & comfortable operation

Comfortable headband for reliable fixation of the flashlight – it won't slip even while you're running. Side switch and the function of quick access to the main modes guarantees a simple one-hand operation. The flashlight won't shift or slide down from the head.

OPTICS TYPE & HOTSPOT-SPILL



PEAK BEAM INTENSITY



BRIGHTNESS STABILIZATION



RUNTIME MIN & MAX



WATERPROOF & SUBMERSIBLE



IMPACT RESISTANCE







# *Tactical Flashlights*



**NEW** electronics, optics and construction!

Tactical Flashlights

# Predator

**EXTREME DISTANCE**

Modes: 6 • Length: 154 mm • Head: 41 mm • Body: 25.4 mm • Weight: 135 g

**LED Cree XP-L HI**  
White or warm light



## What's included:

- 1 - holster
- 2 - lanyard
- 3 - clip
- 4 - rubber grip
- 5 - 2 rubber rings
- 6 - rubber button
- 7 - 2 spare O-rings



**1200 lumens**

1x18650 Li-Ion • 2x18350 Li-Ion • 2xCR123A

**437 meters**



## Extreme beam distance

Due to Long-Range Optics Technology the target is detectable at 437 meters distance. Distinct hotspot and minimal spill guarantee directed aim illumination. New XP-L HI LED provides impressive brightness 1200 lumens.

## Designed for weapon mounting

Standard 1" body diameter matches up with most weapon mounts. Reliable body, red / green / blue filters and original remote switches for comfortable Hunting and secure Military application.

## Durable & waterproof

Made of aircraft-grade aluminum using the Slim Profile Technology. Guaranteed durability – stands up the recoil of any gun gauge, harsh impacts, vibrations and falling from 30 meters height. The flashlight works more than 5 hours at 50 meters depth.

## Up to 18 days of light

Continuous runtime with 18650 Li-Ion battery due to the Firefly technology. Compatible with rechargeable 18650 Li-Ion, 18350 Li-Ion, R123 Li-Ion and non-rechargeable CR123A batteries.

OPTICS TYPE & HOTSPOT: SPILL



TIR  
5°-40°

PEAK BEAM INTENSITY



47750  
candelas

BRIGHTNESS STABILIZATION



DIGITAL  
CPU control

RUNTIME  
MIN & MAX



1.5t hours &  
18 days

WATERPROOF & SUBMERSIBLE



50 meters  
5 hours

IMPACT RESISTANCE



30  
meters





**NEW** electronics, optics and construction!

# Predator PRO

## EXTREME DISTANCE

Modes: 9 • Length: 154 mm • Head: 41 mm • Body: 25.4 mm • Weight: 135 g

**LED Cree XHP35 HI**  
White or warm light



**1700 lumens**

1x18650 Li-Ion • 2x18350 Li-Ion • 2xCR123A

451 meters



### What's included:

- 1 - holster
- 2 - lanyard
- 3 - clip
- 4 - rubber grip
- 5 - 2 rubber rings
- 6 - rubber button
- 7 - 2 spare O-rings



### Extreme beam distance

Due to Long-Range Optics Technology even with a compact-size reflector your target is detectable at 451 meters distance. Distinct hotspot and minimal spill guarantee directed aim illumination. New XHP35 HI LED provides impressive brightness 1700 lumens.

### Constant ultra bright Light

Due to FLAT Runtime Technology the brightness remains constant even in -25°C frost or with almost discharged batteries. Even in Maximal mode the brightness is the same for the whole operation time.

### Designed for weapon mounting

Standard 1" body diameter matches up with most weapon mounts. Reliable body, red/green/blue filters and original remote switches for comfortable Hunting and secure Military application. No failures while shooting.

### Light-weight, durable & waterproof

Made of aircraft-grade aluminium using the Slim Profile Technology. Guaranteed durability — stands up the recoil of any gun gauge and falling from 30 meters height. The flashlight works for more than 5 hours at 50 meters depth.

OPTICS TYPE & HOTSPOT-SPILL



TIR 5°-40°

PEAK BEAM INTENSITY



50750 candelas

BRIGHTNESS STABILIZATION



FULL 100%

RUNTIME MIN & MAX



1 hour & 200 days

WATERPROOF & SUBMERSIBLE



50 meters 5 hours

IMPACT RESISTANCE



30 meters



**NEW** electronics, optics  
and construction!

## Tactical Flashlights

# Viking

**EXTRABRIGHT**

Modes: 6 • Length: 154 mm • Head: 41 mm • Body: 25.4 mm • Weight: 126 g

**LED Cree XP-L**  
White or warm light



**1250 lumens**

1x18650 Li-Ion • 2x18350 Li-Ion • 2xCR123A

**366 meters**

### What's included:

- 1 - holster
- 2 - lanyard
- 3 - clip
- 4 - rubber grip
- 5 - 2 rubber rings
- 6 - rubber button
- 7 - 2 spare O-rings



### Extreme beam distance

Due to Long-Range Optics Technology the target is detectable at 366 meters distance. Distinct hotspot and minimal spill guarantee directed aim illumination. XP-L LED provides impressive brightness 1250 lumens.

### Designed for weapon mounting

Standard 1" body diameter matches up with most weapon mounts. Reliable body, red / green / blue filters and original remote switches for comfortable hunting and secure Military application.

### Durable & waterproof

Made of aircraft-grade aluminum using the Slim Profile Technology. Guaranteed durability – stands up the recoil of any gun gauge, harsh impacts, vibrations and falling from 30 meters height. The flashlight works more than 5 hours at 50 meters depth.

### Up to 18 days of light

Continuous runtime with 18650 Li-Ion battery due to the Firefly technology. Compatible with rechargeable 18650 Li-Ion, 18350 Li-Ion, R123 Li-Ion and non-rechargeable CR123A batteries.

**OPTICS TYPE & HOTSPOT:SPILL**



**PEAK BEAM INTENSITY**



**BRIGHTNESS STABILIZATION**



**RUNTIME MIN & MAX**



**WATERPROOF & SUBMERSIBLE**



**IMPACT RESISTANCE**







**NEW** electronics, optics  
and construction!

Tactical Flashlights

# Viking PRO

**EXTRABRIGHT**

Modes: 9 • Length: 154 mm • Head: 41 mm • Body: 25.4 mm • Weight: 126 g

**LED Cree XHP50**  
White or warm light



**2300 lumens**

1x18650 Li-Ion • 2x18350 Li-Ion • 2xCR123A

**286 meters**



## What's included:

- 1 - holster
- 2 - lanyard
- 3 - clip
- 4 - rubber grip
- 5 - 2 rubber rings
- 6 - rubber button
- 7 - 2 spare O-rings



## Extreme beam distance

Due to Long-Range Optics Technology the target is detectable at 286 meters distance. Distinct hotspot and minimal spill guarantee directed aim illumination. XHP50 LED provides impressive brightness 2300 lumens.

## Designed for weapon mounting

Standard 1" body diameter matches up with most weapon mounts. Reliable body, red / green / blue filters and original remote switches for comfortable Hunting and secure Military application.

## Durable & waterproof

Made of aircraft-grade aluminum using the Slim Profile Technology. Guaranteed durability – stands up the recoil of any gun gauge, harsh impacts, vibrations and falling from 30 meters height. The flashlight works more than 5 hours at 50 meters depth.

## Constant ultra bright light

Due to Flat Runtime Technology the brightness remains constant even in -25°C or with almost discharged batteries. Even in Maximal mode the brightness is the same for the whole operation time.

OPTICS TYPE & HOTSPOT-SPILL



PEAK BEAM INTENSITY



BRIGHTNESS STABILIZATION



RUNTIME MIN & MAX



WATERPROOF & SUBMERSIBLE



IMPACT RESISTANCE





**NEW** electronics, optics  
and construction!

Tactical Flashlights

# Dobermann

**ROBUST & SUPERBRIGHT**

Modes: 6 • Length: 140 mm • Head: 34 mm • Body: 25.4 mm • Weight: 115 g

**LED Cree XP-L HI**  
White or warm light



## What's included:

- 1 - holster
- 2 - lanyard
- 3 - clip
- 4 - rubber grip
- 5 - 2 rubber rings
- 6 - rubber button
- 7 - 2 spare O-rings



**1200 lumens**

1x18650 Li-Ion • 2x18350 Li-Ion • 2xCR123A

**381 meters**



## Bright and focused light

Marvelous brightness 1200 lumens and special optics to ensure narrow and centered light for aiming at the distance up to 381 m: the diameter of the spot is 8 m at the distance of 100 m.

## Durable & waterproof

Made of aircraft-grade aluminum using the Slim Profile Technology. Guaranteed durability – stands up the recoil of 12 gauge shotgun, harsh impacts, vibrations and falling from 30 meters height. The flashlight works for 5 hours at 50 meters depth.

## Cost effective tactical flashlight

Outstanding light characteristics, robust construction and tested quality at available price for those who need simple and truly reliable weapon light. Compatible with additional original accessories: remote switches, color filters, mounts for different types of weapon.

## Up to 18 days of light

Continuous runtime with 1x18650 Li-Ion battery due to the Firefly technology. Compatible with rechargeable 18650 Li-Ion, 18350 Li-Ion, R123 Li-Ion and non-rechargeable CR123A batteries.

OPTICS TYPE & HOTSPOT-SPILL



PEAK BEAM INTENSITY



BRIGHTNESS STABILIZATION



RUNTIME MIN & MAX



WATERPROOF & SUBMERSIBLE



IMPACT RESISTANCE







**NEW** electronics, optics  
and construction!

Tactical Flashlights

# Dobermann PRO

**ROBUST & SUPERBRIGHT**

Modes: 9 • Length: 140 mm • Head: 34 mm • Body: 25.4 mm • Weight: 115 g

**LED** Cree XHP35 HI  
White or warm light



**1700 lumens**

1x18650 Li-Ion • 2x18350 Li-Ion • 2xCR123A

**395 meters**



## What's included:

- 1 - holster
- 2 - lanyard
- 3 - clip
- 4 - rubber grip
- 5 - 2 rubber rings
- 6 - rubber button
- 7 - 2 spare O-rings



## Extreme beam distance

Due to Long-Range Optics Technology the target is detectable at 395 meters distance. Distinct hotspot guarantees perfect illumination of distance up to a required object. Focused narrow light with impressive brightness 1700 lumens for precise aiming.

## Highly reliable

The highest standards of durability: solid-state construction and efficient protection of internal components guarantee no-break work of the flashlight - it stands up to recoil of 12 gauge shotgun and falling from 30 meters.

## Easy to carry and operate

Compact size and light weight for using on the weapon. Steel bezel protect the glass from fallings and impacts. Several brightness modes for multipurpose use in different situations and simple user-interface for comfortable one-hand operation of the flashlight.

## Designed for weapon mounting

Standard 1" body diameter matches up with most weapon mounts. Underbarrel flashlight with reliable body and original remote switches for comfortable Hunting and secure Military application.

OPTICS TYPE & HOTSPOT-SPILL



RUNTIME  
MIN & MAX



PEAK BEAM INTENSITY



WATERPROOF & SUBMERSIBLE



BRIGHTNESS STABILIZATION



IMPACT RESISTANCE



# Partner C1

## TACTICAL & COMPACT

Modes: 6 • Head: 24.4 mm • Body: 25.4 mm

Cree XP-L

LED

White or warm light

800 lumens • 131 meters

Length: 88 mm • Weight: 55 g

1x18650 Li-Ion • 1xR123 Li-Ion • 1xCR123A



NEW electronics, optics and construction!

Tactical Flashlights



OPTICS TYPE & HOTSPOT-SPILL	PEAK BEAM INTENSITY	BRIGHTNESS STABILIZATION
TIR 20°-80°	4320 candelas	FULL 100%
RUNTIME MIN & MAX	WATERPROOF & SUBMERSIBLE	IMPACT RESISTANCE
40 minutes & 13 days	10 meters 2.5 hours	10 meters

## Impressive brightness & efficient TIR-optics

Compact and bright flashlights with TIR-optics for smooth light beam without sharp edges. Distinct hotspot and wide spill guarantee perfect territory illumination and precise aiming.

## Designed for weapon mounting

Standard 1" body diameter matches up with most weapon mounts. Reliable body and original remote switches for comfortable Hunting and secure Military application.

## Durable & waterproof

Made of aircraft-grade aluminum using the Slim Profile Technology in combination with functional ergonomic design. Guaranteed durability – stands up the recoil of 12 gauge shotgun, harsh impacts, vibrations and falling from 10 meters height. The flashlight works for 2.5 hours at 10 meters depth.

## Partner A1

600 lumens • 115 meters

Length: 104 mm • Weight: 59 g

1xAA • 1x14500 Li-Ion

## Partner A2

850 lumens • 131 meters

Length: 150 mm • Weight: 58 g

2xAA





# Partner C1 PRO

## TACTICAL & COMPACT

Modes: 8 • Head: 24.5 mm • Body: 25.4 mm

Cree XP-L

LED

White or warm light

800 lumens • 131 meters

Length: 105 mm • Weight: 65 g  
1x18350 Li-Ion • 1xR123 Li-Ion • 1xCR123A



NEW electronics, optics and construction!



### What's included:

- 1 - holster
- 2 - lanyard
- 3 - clip
- 4 - rubber button
- 5 - 2 spare O-rings

## Tactical Flashlights

OPTICS TYPE & HOTSPOT-SPILL  
PEAK BEAM INTENSITY  
BRIGHTNESS STABILIZATION



RUNTIME MIN & MAX

WATERPROOF & SUBMERSIBLE

IMPACT RESISTANCE



## Impressive brightness & efficient TIR-optics

Compact-size flashlights with amazing light output and prominent beam distance. TIR-optics provides smooth light beam without sharp edges and opportunity to light into the distance for efficient area illumination.

## Durable & waterproof

Made of aircraft-grade aluminum using the Slim Profile Technology. Guaranteed durability – stands up the recoil of 12 gauge shotgun, harsh impacts, vibrations and falling from 10 meters height. The flashlight works for 2.5 hours at 10 meters depth.

## Advanced & easy operation

Additional side button for easy one-hand operation even by wet hands or with gloves. Simple one-click mode changing for quick access to the desired output. Tactical tailcap switch for convenient underbarrel application with a remote switch.

## Partner A1 PRO

600 lumens • 115 meters

Length: 121 mm • Weight: 69 g  
1xAA • 1x14500 Li-Ion



## Partner A2 PRO

850 lumens • 143 meters

Length: 167 mm • Weight: 76 g  
2xAA



# Partner C2

## TACTICAL & COMPACT

Modes: 6 • Head: 25.4 mm • Body: 25.4 mm

Cree XP-L

LED

White or warm light

1250 lumens • 174 meters

Length: 119 mm • Weight: 61 g

1x18650 Li-Ion • 2x18350 Li-Ion • 2xCR123A



NEW electronics, optics and construction!



### What's included:

- 1 - holster
- 2 - lanyard
- 3 - clip
- 4 - rubber button
- 5 - 2 spare O-rings

## Tactical Flashlights

### OPTICS TYPE & HOTSPOT-SPILL



### PEAK BEAM INTENSITY



### BRIGHTNESS STABILIZATION



### RUNTIME MIN & MAX



### WATERPROOF & SUBMERSIBLE



### IMPACT RESISTANCE



## Impressive brightness & TIR optics

Compact-size flashlight with amazing light output 1250 lumens and 174 meters beam distance. Distinct hotspot and wide spill guarantees thorough area illumination. TIR-optics provides not only comfortable wide light, but also suits for distant application.

## Durable & waterproof

Guaranteed durability – stands up harsh impacts and falling from 10 meters height. Total water resistance protects the flashlight from rain, dirt and dust. Water won't leak into the flashlight even during submersion to the depth of 10 meters.

## Compact and light-weight

Compact size and small weight of flashlights with such brightness are perfect for constant carrying in the bag, pocket or on the belt. It won't burden you or create additional weight.

# Partner C4



1450 lumens • 193 meters

Length: 205 mm • Weight: 82 g

2x18650 Li-Ion • 4x18350 Li-Ion





# Partner C2 PRO

## TACTICAL & COMPACT

Modes: 8 • Head: 25.4 mm • Body: 25.4 mm

Cree XHP35

LED

White or warm light

2100 lumens • 192 meters

Length: 136 mm • Weight: 71 g  
1x18650 Li-Ion • 2x18350 Li-Ion • 2xCR123A

No Hassle  
10 years  
Warranty

NEW electronics, optics  
and construction!



### What's included:

- 1 - holster
- 2 - lanyard
- 3 - clip
- 4 - rubber button
- 5 - 2 spare O-rings

## Tactical Flashlights

### OPTICS TYPE & HOTSPOT-SPILL



### PEAK BEAM INTENSITY



### BRIGHTNESS STABILIZATION



### RUNTIME MIN & MAX



### WATERPROOF & SUBMERSIBLE



### IMPACT RESISTANCE



## Impressive brightness & special TIR-optics

Incredible light brightness 2100 lumens and beam distance up to 192 meters. TIR-optics provides not only comfortable wide light, but also suits for distant application. What is more, you won't have an effect of «tunnel vision» even after continuous use.

## Durable reliable body & absolute water resistance

Ultra protection from scratches, harsh impacts and fallings from 10 meter height. Total water resistance completely protects the flashlight from rain, dirt and dust penetration. Submersible to the depth of 10 meters for more than 2 hours.

## Compact and light-weight

Perfect design for constant carrying in the bag, pocket or on the belt. You can put it into the pocket or fix on your clothes with the help of a removable clip.

# Partner C4 PRO



2300 lumens • 215 meters

Length: 205 mm • Weight: 82 g  
2x18650 Li-Ion • 4x18350 Li-Ion





*Searchlights*



No Hassle  
10 years  
Warranty

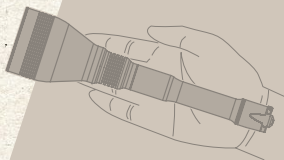
**NEW** electronics, optics  
and construction!

# Barracuda

## ULTIMATE DISTANCE

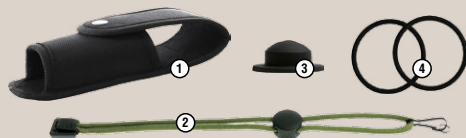
Modes: 6 • Length: 262 mm • Head: 64 mm • Body: 25.4 mm • Weight: 303 g

**LED Cree XP-L HI**  
White or warm light



### What's included:

- 1 - holster
- 2 - lanyard
- 3 - rubber button
- 4 - 2 spare O-rings



**1350 lumens**

2x18650 Li-Ion • 4x18350 Li-Ion • 4xCR123A

**775 meters**



### Impressively bright light & 775 m beam distance

Extreme brightness 1350 lumens and unprecedented beam distance up to 775 meters for efficient illumination of large areas. Constant brightness even when the batteries are nearly empty or at -25°C temperature.

### Unsurpassed reliability

Ultra-strong materials and thoroughly thought-out construction guarantees total protection from faulty operation, which can be caused by harsh impacts or vibrations. The flashlight withstands a fall from the 10<sup>m</sup> floor and even a direct shot.

### Light-weight but durable construction

Due to extremely lightweight construction, the flashlight has minimal weight saving its excellent light characteristics and fail-proof reliability. It permits to use the flashlight during long foot-mobile searching and forced marches.

### Simple operation & continuous runtimes

The flashlight has easy operation and 6 brightness modes. Advanced electronic driver enables to get record runtimes with two 18650 Li-Ion batteries – 1 hour 40 minutes at maximal mode 1450 lumen and 17 hours at middle mode 170 lumen.

OPTICS TYPE & HOTSPOT-SPILL



TIR  
5°-40°

PEAK BEAM INTENSITY



150000  
candelas

BRIGHTNESS STABILIZATION



FULL  
100%

RUNTIME MIN & MAX



1.7 hours &  
30 days

WATERPROOF & SUBMERSIBLE



50 meters  
& 2 hours

IMPACT RESISTANCE



30  
meters

No Hassle  
10 years  
Warranty

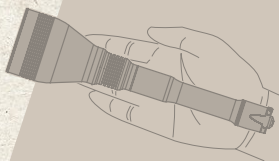
**NEW** electronics, optics  
and construction!

# Barracuda PRO

## ULTIMATE DISTANCE

Modes: 9 • Length: 262 mm • Head: 64 mm • Body: 25.4 mm • Weight: 303 g

**LED** Cree XHP35 HI  
White or warm light



**1850 lumens**

2x18650 Li-Ion • 4x18350 Li-Ion • 4xCR123A

**800 meters**



### What's included:

- 1 - holster
- 2 - lanyard
- 3 - rubber button
- 4 - 2 spare O-rings
- 5 - body 1x18650
- 6 - clip
- 7 - rubber grip
- 8 - 2 rubber rings



### Impressively bright light & 800 m beam distance

Extreme brightness 1850 lumens and unprecedented beam distance up to 800 meters for efficient illumination of large areas. Full brightness stabilization - you can be sure that even during continuous use light brightness will not decrease with time.

### Unsurpassed reliability

Ultra-strong materials and thoroughly thought-out construction guarantees total protection from faulty operation, which can be caused by harsh impacts or vibrations. The flashlight withstands a fall from the 10<sup>m</sup> floor and even a direct shot.

### Light-weight but durable construction

Due to extremely lightweight construction, the flashlight has minimal weight saving its excellent light characteristics and fail-proof reliability. It permits to use the flashlight during long foot-mobile searching and forced marches.

### Up to 500 days of light

Record runtime with 2x18650 Li-Ion batteries due to the Firefly technology. Compatible with rechargeable 18650 Li-Ion, R123 Li-Ion and non-rechargeable CR123A batteries.

OPTICS TYPE & HOTSPOT-SPILL



RUNTIME  
MIN & MAX



PEAK BEAM INTENSITY



WATERPROOF & SUBMERSIBLE



BRIGHTNESS STABILIZATION



IMPACT RESISTANCE







*Every Day Carry Lights*



**NEW** electronics, optics  
and construction!

# Prime C1

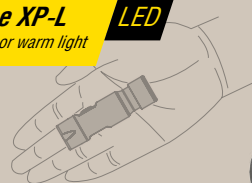
**BRIGHTEST FOR CITY**

Modes: 6 • Head: 24.5 mm • Body: 24.5 mm

**Cree XP-L**

**LED**

White or warm light



**800 lumens • 131 meters**

Length: 87 mm • Weight: 52 g

1x18650 Li-Ion • 1xR123 Li-Ion • 1xCR123A



**What's included:**

- 1 - holster
- 2 - clip
- 3 - 2 spare O-rings



**OPTICS TYPE &  
HOTSPOT-SPILL**



TIR  
20°-80°

**PEAK BEAM  
INTENSITY**



4320  
candelas

**BRIGHTNESS  
STABILIZATION**



FULL  
100%

**RUNTIME  
MIN & MAX**



40 minutes &  
140 days

**WATERPROOF &  
SUBMERSIBLE**



10 meters  
2 hours

**IMPACT  
RESISTANCE**



10  
meters

## Impressive brightness & TIR-optics

Compact-size flashlights with amazing light output. Effective TIR-optics with wide light angle 20:80 for even area illumination at the distance and no effect of "tunnel vision" even during continuous use of the flashlight.

## Durable & waterproof

Guaranteed durability – stands up harsh impacts and falling from 10 meters height. Total water resistance, which completely protects the flashlight from rain, dirt and dust penetration. Submersible to the depth of 10 meters for more than 2 hours.

## Compact & light-weight

Compact size and great brightness make this flashlight perfect for constant carrying in the bag, pocket or on the belt. You can put it into the pocket or fix on your clothes with the help of a removable clip.

## Prime A1

**600 lumens • 115meters**

Length: 103 mm • Weight: 54 g

1xAA • 1x14500 Li-Ion



## Prime A2

**850 lumens • 143 meters**

Length: 149 mm • Weight: 58 g

2xAA







**NEW** electronics, optics  
and construction!

# Prime C2

**BRIGHTEST FOR CITY**

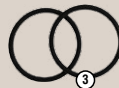
Modes: 6 • Length: 118 mm • Head: 24.5 mm • Body: 24.5 mm • Weight: 56 g

**LED Cree XP-L**  
White or warm light



What's included:

- 1 - holster
- 2 - clip
- 3 - 2 spare O-rings



**1250 lumens**

1x18650 Li-Ion • 2x18350 Li-Ion • 2xCR123A

**174 meters**



## Impressive brightness & special TIR-optics

Compact-size flashlight with amazing light output 1250 lumens and 174 meters beam distance. Distinct hotspot and wide spill guarantees thorough area illumination. TIR-optics provides not only comfortable wide light, but also suits for distant application.

## Durable & waterproof

Guaranteed durability – stands up harsh impacts and falling from 10 meters height. Total water resistance, which completely protects the flashlight from rain, dirt and dust penetration. Water won't leak into the flashlight even during submersion to the depth of 10 meters.

## Compact & light-weight

Compact size and small weight of flashlights with such brightness are perfect for constant carrying in the bag, pocket or on the belt. The flashlight won't burden you or create additional weight. You can put it into the pocket or fix on your clothes with the help of a removable clip.

## Various brightness modes & easy operation

Perfectly selected brightness modes and simple operation by side switch button for comfortable everyday use in various situations. Record runtimes – from 1,5 hours in Turbo mode to 100 days in Firefly mode.

OPTICS TYPE & HOTSPOT-SPILL



PEAK BEAM INTENSITY



BRIGHTNESS STABILIZATION



RUNTIME MIN & MAX



WATERPROOF & SUBMERSIBLE



IMPACT RESISTANCE



# Prime C1 PRO



**NEW** electronics, optics and construction!

## BRIGHTEST FOR CITY

Modes: 11 • Head: 24.5 mm • Body: 24.5 mm

Cree XP-L

LED

White or warm light

800 lumens • 131 meters

Length: 93 mm • Weight: 64 g  
1x18350 Li-Ion • 1xR123 Li-Ion • 1xCR123A



### What's included:

- 1 - holster
- 2 - clip
- 3 - 2 spare O-rings
- 4 - lanyard
- 5 - lanyard ring
- 6 - magnet

OPTICS TYPE & HOTSPOT-SPILL	PEAK BEAM INTENSITY	BRIGHTNESS STABILIZATION
TIR 20°-80°	4320 candelas	FULL 100%
RUNTIME MIN & MAX	WATERPROOF & SUBMERSIBLE	IMPACT RESISTANCE
40 minutes & 140 days	10 meters 2 hours	10 meters

## Impressive brightness & TIR-optics

Compact-size flashlights with amazing light output. TIR-optics provides not only comfortable wide light, but also suits for distant application. What is more, you won't have an effect of «tunnel vision» even after continuous use.

## Durable reliable body & absolute water resistance

Ultra protection from scratches, harsh impacts and fallings from 10 meters height. Total water resistance - water won't leak into the flashlight even during submersion to the depth of 10 meters.

## Low battery indication

Multicolor Warning Indication provides information about low battery level and high temperature. Multicolor State Indication and ultra low current drain in OFF-state is more than 25 years.

## Prime A1 PRO

600 lumens • 115 meters

Length: 108 mm • Weight: 48 g  
1xAA • 1x14500 Li-Ion



## Prime A2 PRO

850 lumens • 143 meters

Length: 155 mm • Weight: 70 g  
2xAA







**NEW** electronics, optics  
and construction!

# Prime C2 PRO

**BRIGHTEST FOR CITY**

Modes: 11 • Length: 124 mm • Head: 24.5 mm • Body: 24.5 mm • Weight: 68 g

**LED Cree XHP35**  
White or warm light



**2100 lumens**

1x18650 Li-Ion • 2x18350 Li-Ion • 2xCR123A

**192 meters**



**What's included:**

- 1 - holster
- 2 - clip
- 3 - 2 spare O-rings
- 4 - lanyard
- 5 - lanyard ring
- 6 - magnet



## Impressive brightness and special TIR-optics

Incredible light brightness 1200 lumens and beam distance up to 188 meters. TIR-optics provides not only comfortable wide light, but also suits for distant application. What is more, you won't have an effect of «tunnel vision» even after continuous use.

## Durable reliable body & absolute water resistance

Ultra protection from scratches, harsh impacts and fallings from 10 meter height. Total water resistance, which completely protects the flashlight from rain, dirt and dust penetration. Water won't leak into the flashlight even during submersion to the depth of 10 meters.

## Compact and light-weight

Compact size and small weight of flashlights with such brightness are perfect for constant carrying in the bag, pocket or on the belt. The flashlight won't burden you or create additional weight. You can put it into the pocket or fix on your clothes with the help of a removable clip.

## Low battery indication

Multicolor Warning Indication provides information about low battery level and high temperature. Multicolor State Indication and ultra low current drain in OFF-state is more than 25 years.

**OPTICS TYPE &  
HOTSPOT-SPILL**



TIR  
20°-80°

**PEAK BEAM  
INTENSITY**



9200  
candelas

**BRIGHTNESS  
STABILIZATION**



FULL  
100%

**RUNTIME  
MIN & MAX**



1 hour &  
200 days

**WATERPROOF &  
SUBMERSIBLE**



10 meters  
2 hours

**IMPACT  
RESISTANCE**



10  
meters



*Accessories*

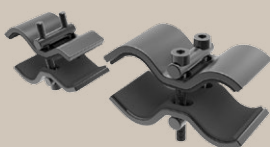




**NEW** electronics, optics  
and construction!

## Armytek Weapon Mounts

### AWM-01



- 2 mounts in the set
- Diameter range:  
8 – 23.5 mm and  
10.5 – 26 mm\*
- For flashlights with  
the head diameter  
up to 42 mm



### AWM-02



- Diameter range:  
19.5 – 35 mm\*
- For flashlights with  
the head diameter up  
to 64 mm



## Remote Switch for Armytek Flashlights



### Compatible with:

- Barracuda / Barracuda Pro
- Predator / Predator Pro
- Viking / Viking Pro
- Dobermann / Dobermann Pro
- Partner / Partner Pro

Specially designed remote switch with curl cord allows you to use your flashlight with most types of weapon. The length of cord can vary from 25 to 70 cm.

- For mounting on shotguns and rifles
- Made of durable steel for maximal reliability
- Heat-resistant silicone inside to avoid scratching and flashlight falling caused by recoil
- Extended screws for mounting on barrel of larger diameter
- Thoroughly designed construction for mounting on almost all types of weapons, including side-by-side and over and under double barrels





**NEW** electronics, optics  
and construction!

## Color filters & Diffusers

Filters for flashlights are developed and designed to extend the opportunities of usage and in fact make your device multifunctional and more efficient.

### Compatible with:

- Predator / Predator Pro
- Viking / Viking Pro



**Green Filters** are used mostly in hunting and tactics. Green light doesn't frighten animals and its beam can't be seen from aside so it makes impossible to disclose your location.

**Red Filter** is good for reading maps and navigating. It doesn't disturb night vision and can be used as signal light. Has the same features as the green filter.



**Blue Filter** is the best for navigating and reading because you can better distinguish lines and marks in blue light. Can also be used with night vision equipment.

**White Diffuser** for flashlights converts the focused light into a flood beam. Wider beam angle is better for close-distance applications as reading, lightening a tent or a small room, car repair and so on. The beam covers larger area and provides clear and comfortable lighting.



## Grease

### NyoGel 760G



Multipurpose silicone grease for lubrication and protection of electrical contacts and connections. Ideal for flashlights' threads and O-rings.



- Thick and dense, doesn't flow under its own weight
- High thermal resistance (-40...+135°C)
- Doesn't dry out and is fully waterproof
- Doesn't dissolve in water and other liquids
- Reliably protects all parts of flashlight from wearing out





**NEW** electronics, optics  
and construction!

## Armytek 18650 Li-Ion batteries 3.7V *Rechargeable, protected*



2800 mAh • 3100 mAh • 3400 mAh

- **Made in Japan high-grade ICs (Seiko).**  
They are notable for low power requirement and high reliability. It means you get more advanced device performance.
- **The best chemistry in the world - Panasonic (Japan).**  
Stands out for high discharge rates and long life span.
- **Possibility to work even under heavy loading.**  
You will appreciate high battery discharge rate – up to 7.5 Amperes. We use quadruple brand MOSFET's! You can use them in severe conditions – they won't let you down even if you give up.
- **Triple protection against short, over-discharge, over-charge.**  
You get the power supply, which is totally protected from any damage and enjoy its maximal performance and improved voltage stability. Certainly you won't face battery failure.
- **304 Stainless steel plate reinforced bottom.**  
This unique structural design provides better impact-resistance.



## Armytek CR123A lithium battery *Non-rechargeable*



- Ideal for LED flashlights, photo equipment, cameras, optics and other high current digital devices
- PCT protection for safety
- 10 years – ultra long shelf life with low discharge
- Voltage 3.0V
- Capacity 1600 mAh









# How to choose a flashlight easily

**O**ur engineers and designers in **Armytek** thoroughly consider the application sphere for each flashlight model. That's why it's rather easy to select the most suitable variant for you. Just follow 3 simple steps and decide what flashlight is the best for you! Additionally you'll find some tables at the next pages that will make your choice even easier.

*By the way, when choosing the flashlight remember, that all our flashlights are available with warm or white light. Warm light is better for distinguishing colors and applying in the conditions of rain and fog in comparison with white light, which is in its turn 7% brighter.*

## STEP 1

What tasks do you need a flashlight for?

## STEP 2

What brightness & power source suit better?

## STEP 3

Do you need a basic or advanced Pro-version?

### Multi-flashlights

Fully aluminum and water-resistant solid body without long wires, weak rubber connectors and unnecessary boxes. Customized with TIR-optics with comfortable wide light. Go with reliable headbands for applying as headlamps.

**Wizard Pro** and **Wizard** are the most comfortable multi-flashlights with **2300** lumens brightness powered by **1x18650** Li-Ion battery.

**Tiara A1 Pro** and **Tiara A1** are the brightest flashlights powered by very popular **AA** or powerful **14500** Li-Ion batteries. Their output reaches up to **600** lumens.

**Tiara C1 Pro** and **Tiara C1** are the most compact ones working on powerful lithium **CR123A** battery and that's why extremely bright – **800** lumens.

♦ *For differences in Pro & Regular versions see the comparison charts at the next pages.*

### Every Day Carry Lights

All EDC flashlights have a removable clip, a holster and a robust lanyard for easy carry and application.

If you prefer to operate a flashlight with a tail tactical switch choose reliable tactical lights with TIR-optics – **Partner** models with different power sources: **1xAA, 2xAA, 1xCR123A, 1x18650, 2x18650**. You decide either you want to get availability of AA battery or better brightness on lithium 18650 / CR123A battery.

EDC flashlights with TIR-optics specially created for the lovers of side switch operation are **Prime Pro** and **Prime**.



**Prime A1 Pro** and **Prime A1** powered by wide-spread **AA** batteries provide **600** lumens brightness and **115** meters beam distance. **Prime A2 Pro** and **Prime A2** with **2xAA** batteries show the results of **850** lumens and **143** meters.

**Prime C1 Pro** and **Prime C1** are the smallest bright EDC lights working on **1xCR123A** battery for great output values – **800** lumens & prominent beam distance – **131**. **Prime C2 Pro** and **Prime C2** are powered by **1x18650** battery and create a perfect combination of a compact body with extreme power – **2100** lumens brightness & **192** meters beam distance.

♦ *For differences in Pro & Regular versions see the comparison charts at the next pages.*

## Tactical flashlights

**Far-throwing** and robust flashlight submersible to 50 meters and impact-resistant to 30 meters.

For using with rifles: **Predator** or **Predator Pro** – they provide **451** meters of excellent bright light – **1250** lumens.

For applying with shotguns: **Viking** or **Viking Pro** that guarantee **286** meters beam throw with amazing brightness – **2300** lumens.

Cost-effective choice for weapon application is **Dobermann** with **1200** lumens and **381** meters throw or **Dobermann Pro** with **395** meters of directed light and **1700** lumens brightness.

Based on **Dobermann** model we offer also far-throwing flashlights with **green** and **red** light. They don't frighten the game or reveal your location.

The best choice for applying with shotguns are **also compact tactical flashlights** with TIR-optics – **Partners**.

**Partner A1 Pro** and **Partner A1** are compact-size bright flashlights powered by very popular **AA** batteries. They provide **600** lumens output and **115** meters

throw. **Partner A2 Pro** and **Partner A2** work on **2xAA** batteries to achieve **850** lumens brightness and **143** meters beam distance.

**Partner C1 Pro** and **Partner C1** are the smallest but bright tactical lights powered by **1xCR123A** battery: you get **800** lumens output & **131** meters throw with these small ones. **Partner C2 Pro** and **Partner C2** are the best combination of size and power: working on **1x18650** they compile in themselves the compact body with extreme power – **2100** lumens & **188** meters throw. And if you want to get the brightest of compact weapon lights choose **Partner C4 Pro** or **Partner C4** – with **2x18650** you get **2300** lumens & **215** meters beam distance.

♦ *For differences in Pro & Regular versions see the comparison charts at the next pages.*

## Searchlights

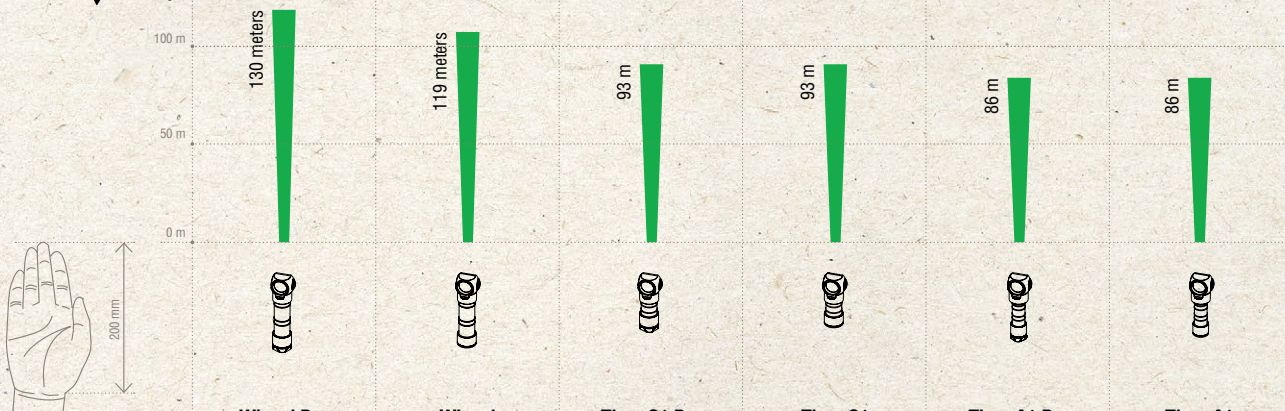
The most powerful and throwing flashlights: **Barracuda** and **Barracuda Pro** powered by **2x18650** batteries offer amazing **800** meters beam distance with **1850** lumens brightness. There is also a possibility of attaching a remote switch and using these "monster-flashlights" at weapon.

♦ *For differences in Pro & Regular versions see the comparison charts at the next pages.*

Premium  
Quality



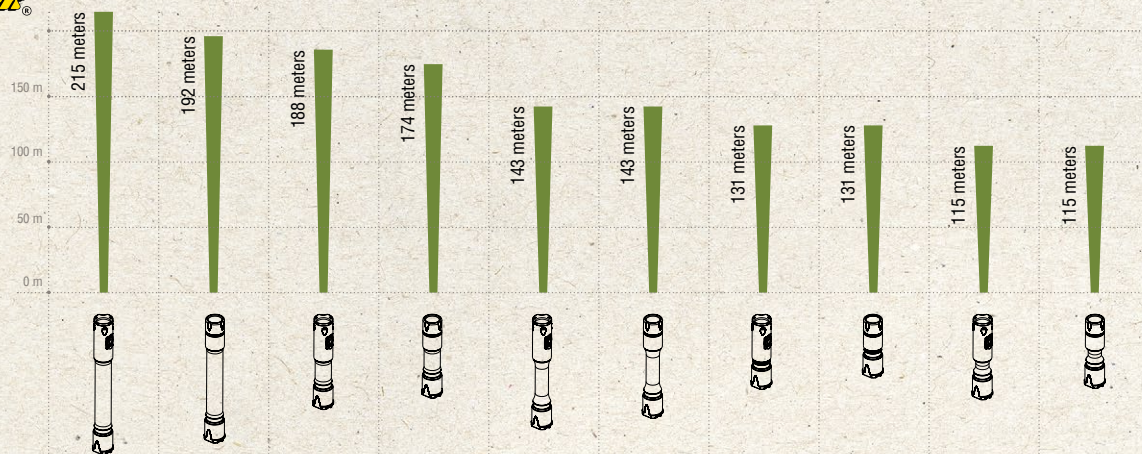
## Multi-flashlights



	Wizard Pro	Wizard	Tiara C1 Pro	Tiara C1	Tiara A1 Pro	Tiara A1
Maximum Light Output	2300 lm	1250 lm	800 lm	800 lm	600 lm	600 lm
LED	XHP50	XP-L	XP-L	XP-L	XP-L	XP-L
Power source	1x18650 Li-Ion	1x18650 Li-Ion	1xCR123A	1xCR123A	1xAA	1xAA
Number of modes	11	6	10	6	10	6
Runtime in Max mode	1 h	1,5 h	40 min	40 min	50 min	50 min
Runtime in Min mode	200 days	100 days	140 days	130 days	90 days	90 days
Hotspot / spill	70° / 120°	70° / 120°	70° / 120°	70° / 120°	70° / 120°	70° / 120°
Brightness stabilization	FULL	DIGITAL	FULL	FULL	FULL	FULL
Active temperature control	+	+	-	-	-	-
Multi-color indication	+	-	+	-	+	-
Removable magnet	+	-	+	-	+	-
Lanyard ring + lanyard	+	-	+	-	+	-
Stainless steel front bezel	+	-	+	-	+	-
Advanced mode control	+	-	+	-	+	-
Power source settings	+	-	+	-	+	-

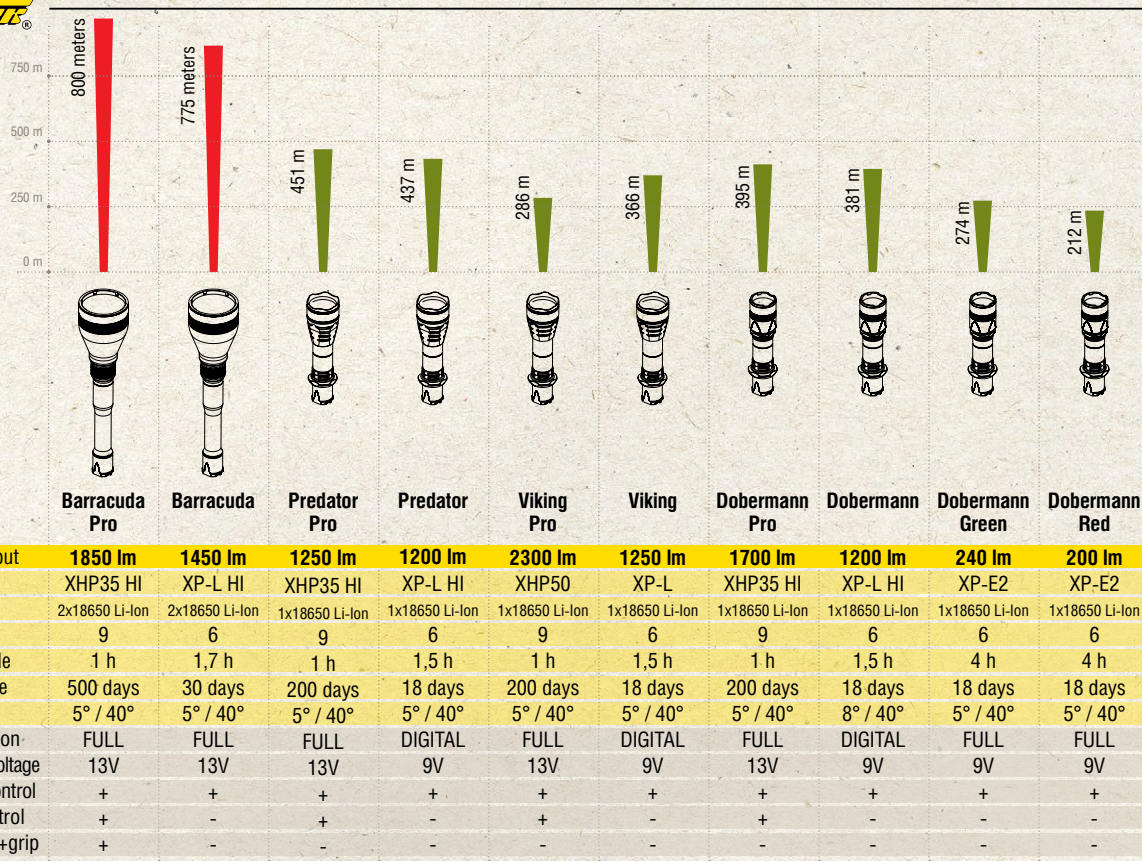


# Tactical Flashlights



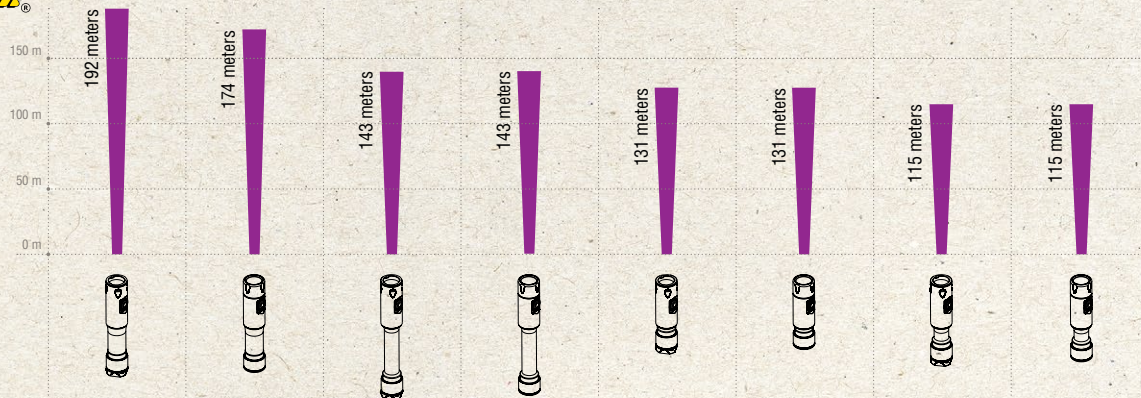
	Partner C4 Pro	Partner C4	Partner C2 Pro	Partner C2	Partner A2 Pro	Partner A2	Partner C1 Pro	Partner C1	Partner A1 Pro	Partner A1
Maximum Light Output	2300 lm	1450 lm	2100 lm	1250 lm	850 lm	850 lm	800 lm	800 lm	600 lm	600 lm
LED	XHP35	XP-L	XHP35	XP-L	XP-L	XP-L	XP-L	XP-L	XP-L	XP-L
Power source	2x18650 Li-Ion	2x18650 Li-Ion	1x18650 Li-Ion	1x18650 Li-Ion	2xAA	2xAA	1xCR123A	1xCR123A	1xAA	1xAA
Number of modes	8	6	8	6	8	6	8	6	8	6
Runtime in Max mode	1.7 h	1.7 h	1 h	1.5 h	0.8 h	0.8 h	40 min	40 min	0.8 h	0.8 h
Runtime in Min mode	30 days	30 days	40 days	18 days	17 days	17 days	13 days	13 days	8 days	8 days
Hotspot / spill	20° / 80°	20° / 80°	20° / 80°	20° / 80°	20° / 80°	20° / 80°	20° / 80°	20° / 80°	20° / 80°	20° / 80°
Brightness stabilization	FULL	FULL	FULL	DIGITAL	FULL	FULL	FULL	FULL	FULL	FULL
Active temperature control	+	+	+	+	-	-	-	-	-	-
Multi-color indication	+	-	+	-	+	-	+	-	+	-
Stainless steel front bezel	+	-	+	-	+	-	+	-	+	-
Additional side button	+	-	+	-	+	-	+	-	+	-







## Every Day Carry Lights



	Prime C2 Pro	Prime C2	Prime A2 Pro	Prime A2	Prime C1 Pro	Prime C1	Prime A1 Pro	Prime A1
Maximum Light Output	2100 lm	1250 lm	850 lm	850 lm	800 lm	800 lm	600 lm	600 lm
LED	XHP35	XP-L	XP-L	XP-L	XP-L	XP-L	XP-L	XP-L
Power source	1x18650 Li-Ion	1x18650 Li-Ion	2xAA	2xAA	1xCR123A	1xCR123A	1xAA	1xAA
Number of modes	11	6	11	6	11	6	11	6
Runtime in Max mode	1 h	1.5 h	0.8 h	0.8 h	40 min	40 min	0.8 h	0.8 h
Runtime in Min mode	200 days	100 days	200 days	200 days	140 days	140 days	90 days	90 days
Hotspot / spill	20° / 80°	20° / 80°	20° / 80°	20° / 80°	20° / 80°	20° / 80°	20° / 80°	20° / 80°
Brightness stabilization	FULL	DIGITAL	FULL	FULL	FULL	FULL	FULL	FULL
Active temperature control	+	+	-	-	-	-	-	-
Multi-color indication	+	-	+	-	+	-	+	-
Removable magnet	+	-	+	-	+	-	+	-
Lanyard ring + lanyard	+	-	+	-	+	-	+	-
Stainless steel front bezel	+	-	+	-	+	-	+	-
Advanced mode control	+	-	+	-	+	-	+	-
Power source settings	+	-	+	-	+	-	+	-





Graphic design and layout by **NUMZ Graphics**, Canada



Armytek Optoelectronics Inc.  
13-85 West Wilmot St, Richmond Hill  
Ontario, L4B 1K7, Canada

Phone: +1 (905) 597-7478  
E-mail: [world@armytek.com](mailto:world@armytek.com)  
[www.armytek.com](http://www.armytek.com)