

# S<sup>3</sup>E EVALUATION PACKAGE

## GENERAL

Our evaluation package consists of a stereo camera head of your choice and the S<sup>3</sup>E software. To achieve the highest possible accuracy the stereo head has to be configured to meet the geometric requirements of your target application. We provide a .xls spreadsheet which helps you to configure the ideal setup for your application. Do not hesitate to ask for further assistance including trial programs and pricing.

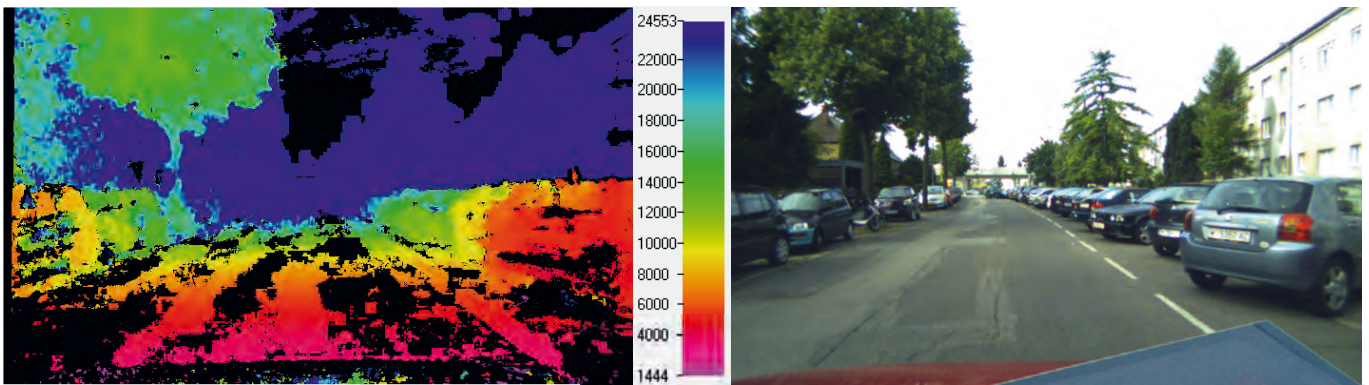


Fig. 3: Left: Depth map; Middle: Color legend; Right: Color image of the middle camera.

## PACKAGE DETAILS

- ▶ Stereo head with 2 (grayscale) or 3 (2 grayscale, 1 color) cameras
- ▶ Lenses with focal length of your choice
- ▶ S<sup>3</sup>E Software Stereo Engine
- ▶ Graphical User Interface for visualization of stereo data (PfeRtdxHost) in 2D and 3D (OpenSceneGraph)
- ▶ Source-code-example to describe the integration of stereo image data into an own application
- ▶ Calibration data for the selected stereo head
- ▶ Calibration software for re-calibration of the stereo head (2 or 3 cameras)
- ▶ Documentation, USB-cable

## HARDWARE

- ▶ Custom stereo cameras for evaluation and prototyping in rugged housing
- ▶ 2 or 3 cameras in horizontal or L-shape alignment
- ▶ The L-shaped stereo camera uses the horizontal and the vertical baseline for stereo matching and combines the results afterwards, which ensures less occlusions and more reliable data.
- ▶ IDS cameras with USB interface (bus powered) ([www.ids-imaging.de](http://www.ids-imaging.de))



Fig. 4: Different stereo camera configurations.