



Please keep this document until the end of your trip.

Sec. nr.:KL1018: 014, KL0889: 005

Name \_\_\_\_\_  
Passport \_\_\_\_\_  
E-ticket # \_\_\_\_\_



FOLD LINE

FLIGHT	DATE	FROM	TO	DEPARTURE	GATE	BOARDING	CLASS	SEAT
KL1018	02APR	LONDON	AMSTERDAM	14:50	unknown	14:20	M ECONOMY	
KL0889	02APR	AMSTERDAM	HONG KONG	21:25	unknown		M ECONOMY	

Verify terminal and gate at airport



**BAGGAGE DROP-OFF**

at least 60 min prior to departure

Baggage for flights to/via Amsterdam: please go to the AIR FRANCE KLM drop-off points



**BOARDING**

Starts at 14:20 hours

If you have hand-baggage only you may go straight to the gate.



**LAST CALL**

Check the gate closing time

Please note that after the gate closing time, passengers can no longer board the aircraft. Any check-in baggage will be offloaded.

We wish you a very nice flight!

FOLD LINE

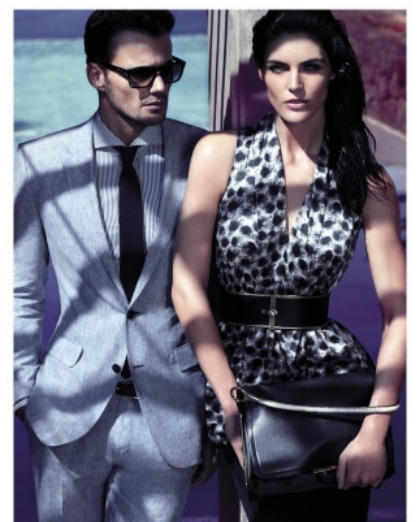
**Important departure information please read all instructions carefully!**

1. Check in your baggage at least 180 minutes prior to departure for intercontinental flights and 150 minutes for European flights.
2. The check-in desk and luggage drop-off open at 04:30 AM.
3. If your baggage weighs more than 23 kg, you will have to pay an excess baggage fee. The maximum baggage weight is 32 kg. Read more about baggage on KLM.com
4. At London Heathrow Terminal 4, KLM and SkyTeam partners operate check-in zone F for Economy Class passengers. Check-in zone H is reserved for Business Class passengers, as well as SkyTeam Elite and Elite Plus cardholders. KLM Europe Business Class passengers can now use the departure security fast-track lane upon presentation of their boarding pass.

Sec. nr.:KL1018: 014, KL0889: 005



AIR FRANCE KLM



BOSS  
HUGO BOSS