



New Process for Taking Packet Tracer Assessments

Frequently Asked Questions

Last Updated 26 October 2015

FAQ Table of Contents

Q1. Why is there a new process?	2
Q2. What are the new software requirements to take or preview exams that include Packet Tracer simulations items such as PTSAs and PTMOs?	2
Q3. When do these requirements go into effect?	2
Q4. How can I check to see if I have all of the necessary software?	2
Q5. Where do I get the latest version of Java?	2
Q6. How do I associate .jnlp filetype with the Java WebStart Program?.....	2
Q7. Where can I download the latest PTSA .jar file?	3
Q8. What is the new process for launching assessments with PT items?	3
Q9. What if I don't want to take Packet Tracer Exams?	3

Q1. Why is there a new process?

- A.** Google announced that the Chrome browser will no longer support the NPAPI plugin that is used to run many Java Programs globally. This will impact Packet Tracer Skills Assessments (PTSA), Packet Tracer simulations (PTMO) and NetLab functionality. As a result, a new process is required to run Packet Tracer in the Networking Academy Assessments. This new process will be required for all browsers that will be used to take assessments that contain Packet Tracer.

Q2. What are the new software requirements to take or preview exams that include Packet Tracer simulations items such as PTSAs and PTMOs?

- A.** There are four new requirements for all browsers on all computers:
1. Java 7 - Java Runtime Environment (JRE) 7 or above must be installed.
 2. All ports on the PC between 39000 and 39009 must be open for localhost access.
 3. All browsers on the computer must have the “.jnlp” filetype associated with the Java Web Start Launcher program.
 4. The latest ptsa jar files must be installed on the computer.

Q3. When do these requirements go into effect?

- A.** October 2015

Q4. How can I check to see if I have all of the necessary software?

- A.** The Cisco Packet Tracer Environment Checker can help detect any potential areas that require more attention. Go to <https://assessment.netacad.net/check/check.html>. This link is also located in the student and instructor resources in each course.

Q5. Where do I get the latest version of Java?

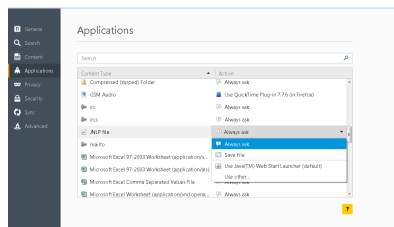
- A.** Go to www.java.com/verify to verify that you have the latest version of Java.

Q6. How do I associate .jnlp filetype with the Java WebStart Program?

This association may be automatically created in IE and Chrome. This mostly applies to Firefox and other OSes.

In Firefox – Click on the Firefox Menu → Options → Applications. For more information see:

<https://support.mozilla.org/en-US/kb/applications-panel-set-how-firefox-handles-files>



Q7. Where can I download the latest PTSA .jar file?

- A. When performing an environment check, the latest .jar files will download to your machine. Go to <https://assessment.netacad.net/check/check.html> to launch the Cisco Packet Tracer Environment Checker.

Q8. What is the new process for launching assessments with PT items?

- A. When a PT exam is launched, a very small file will be downloaded and may need to be manually clicked in order to launch the assessment. This file has a '.JNLP' extension and is should be associated with the JRE on the local computer. Chrome may not automatically recognize the file association. If that is the case, clicking the JNLP file from the Downloads folder or from the Chrome Download Bar will launch the assessment.



The JNLP file is unique to the assessment and cannot be reused, even to continue an assessment that was previously started and left.

Instructors will need to follow these same steps to preview a PT assessment or to review a PT assessment submitted by a student.

Q9. What if I don't want to take Packet Tracer Exams?

- A. In addition to the PTSAs, chapter and pretest exams may contain PTMOs. If you do not want the simulation to load in your exam, you can press the "Skip" button at the beginning of the exam to prevent PT from loading. However, you will still be scored for your response or lack of response to the PTMO questions.