

Satellite / Browser's SSO

Issues with Chrome and IE

10/25/2017

Waldiro M Pinheiro

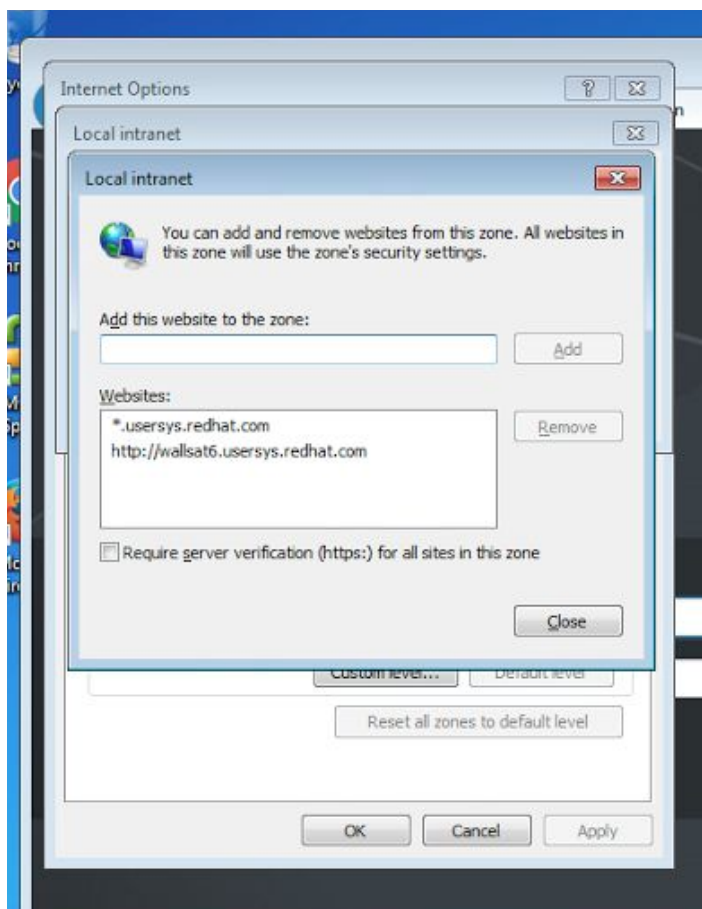
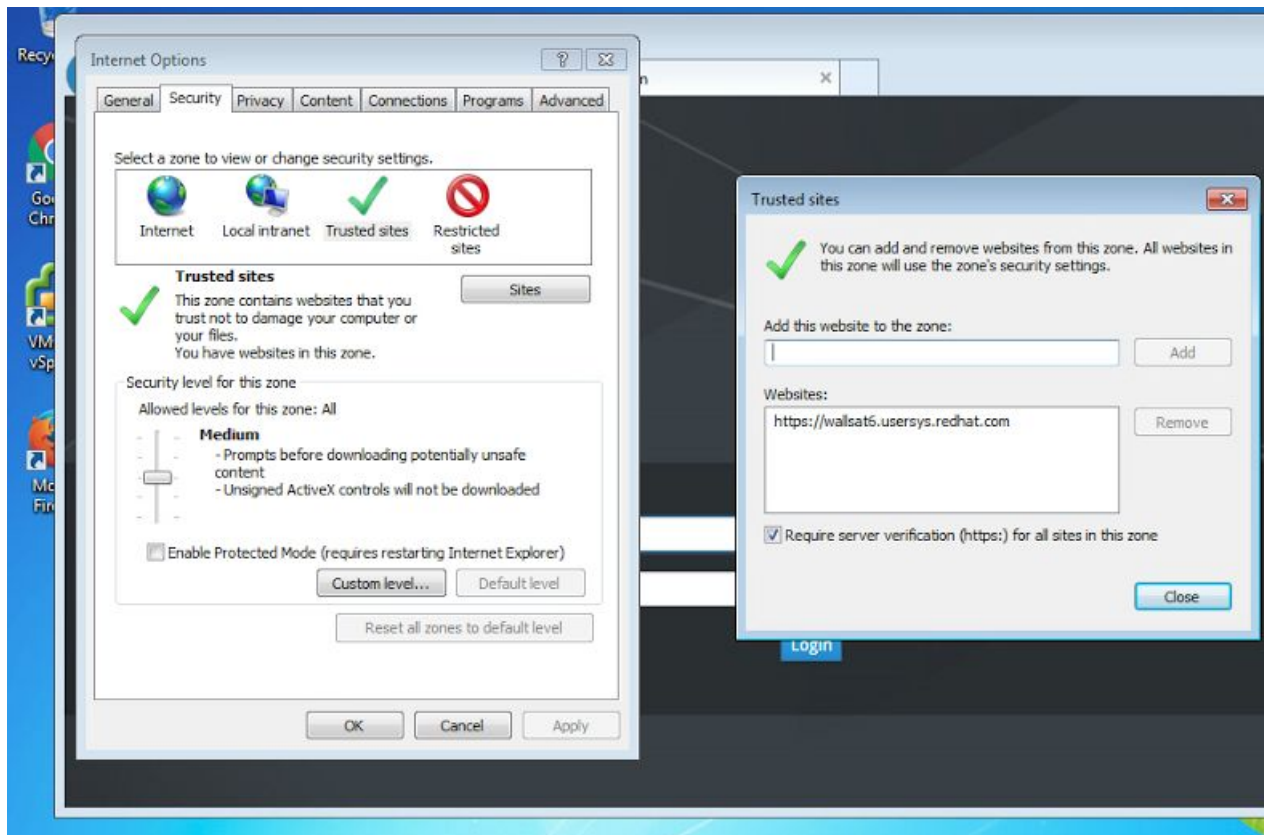
waldirio@redhat.com

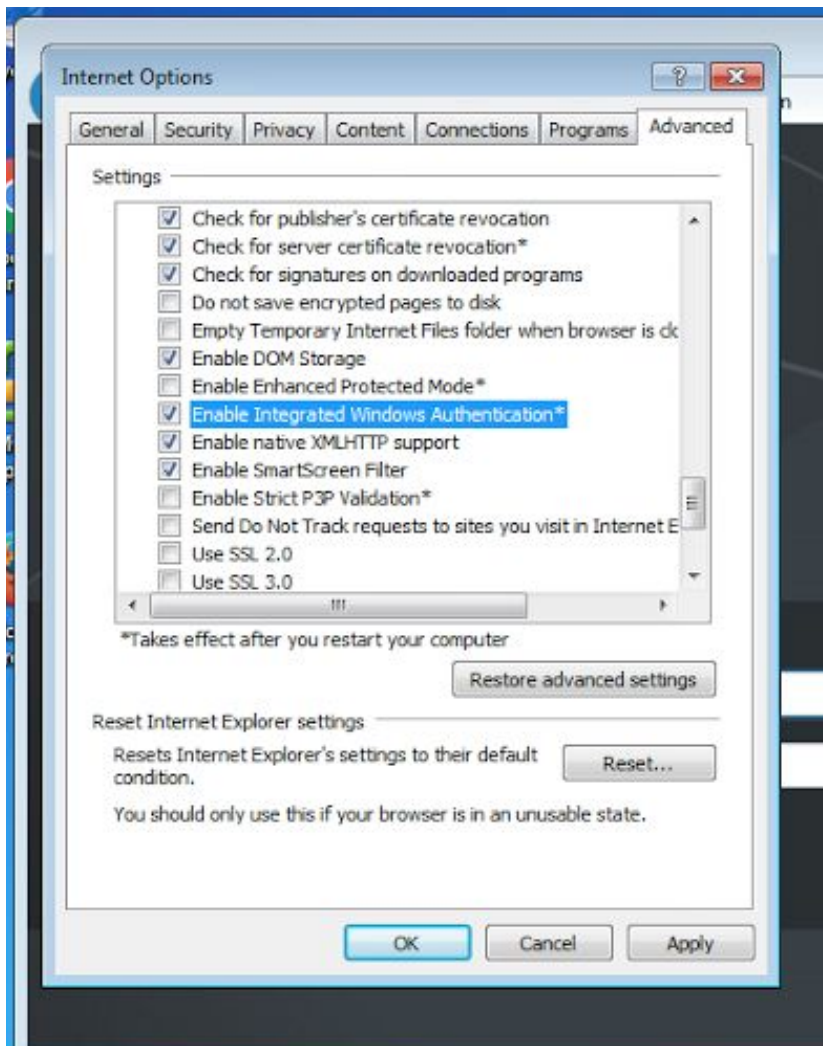
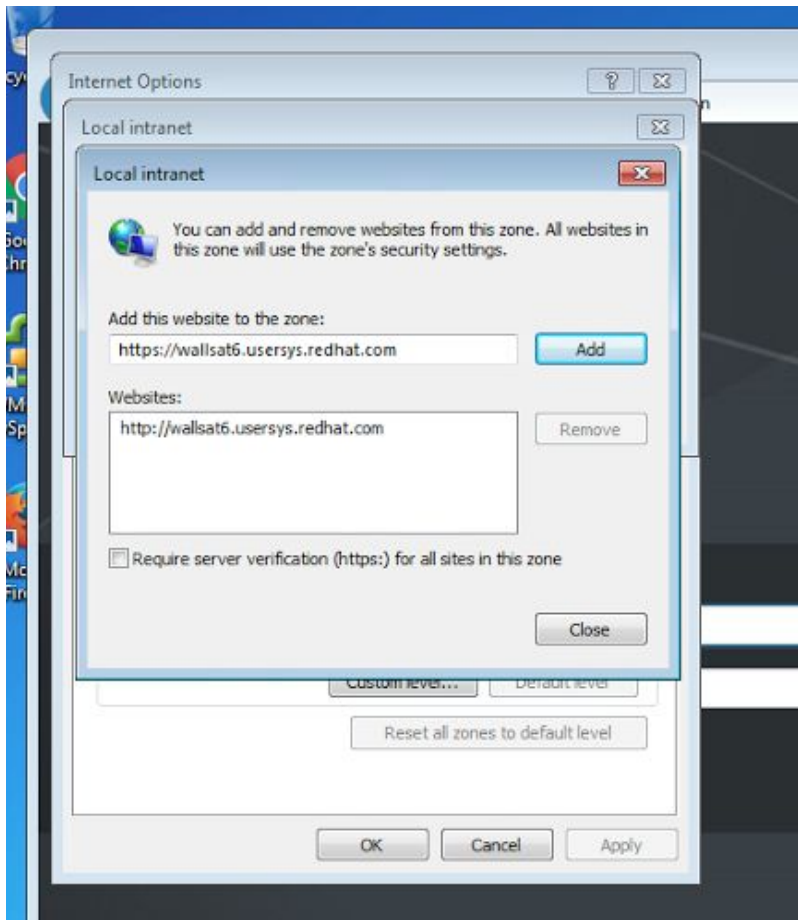
Index

Internet Explorer	3
Firefox	8
Chrome	10

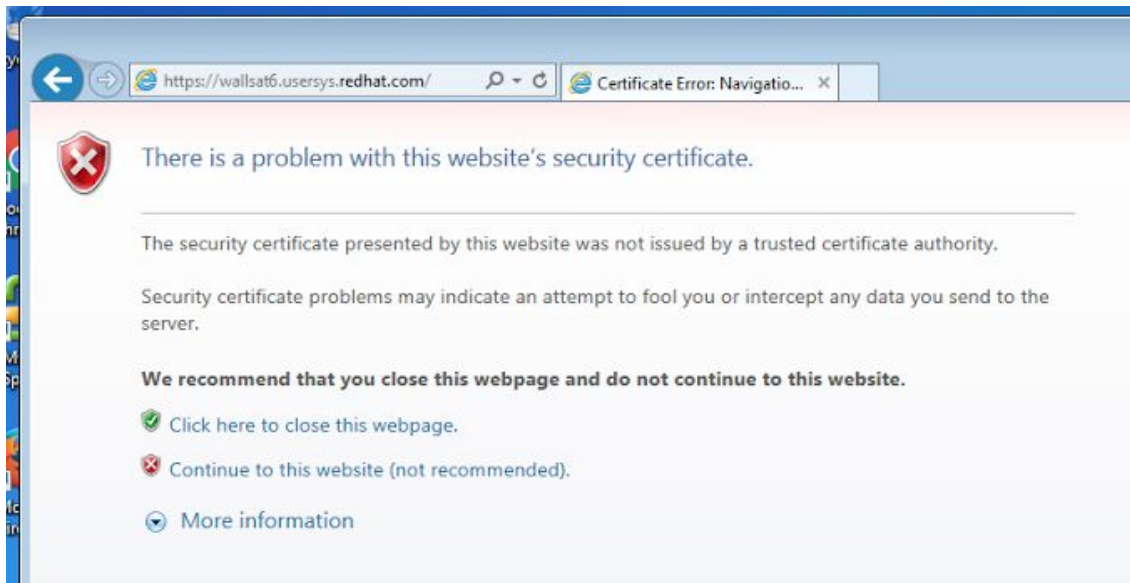
Internet Explorer

According recommended by our official documentation, steps below should enable IE to do the SSO

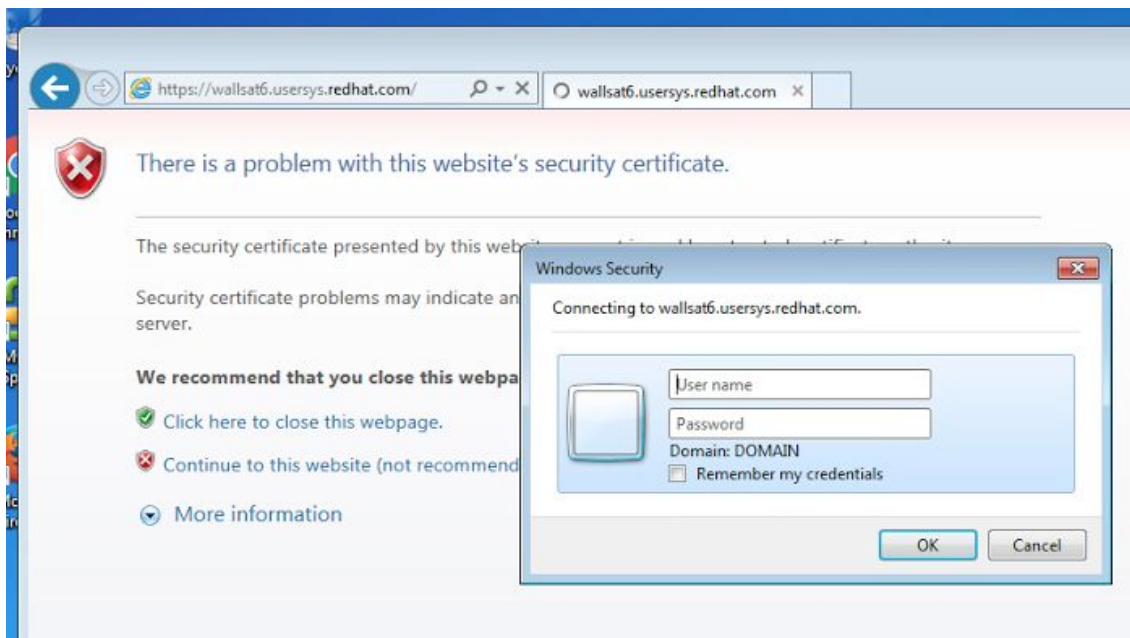




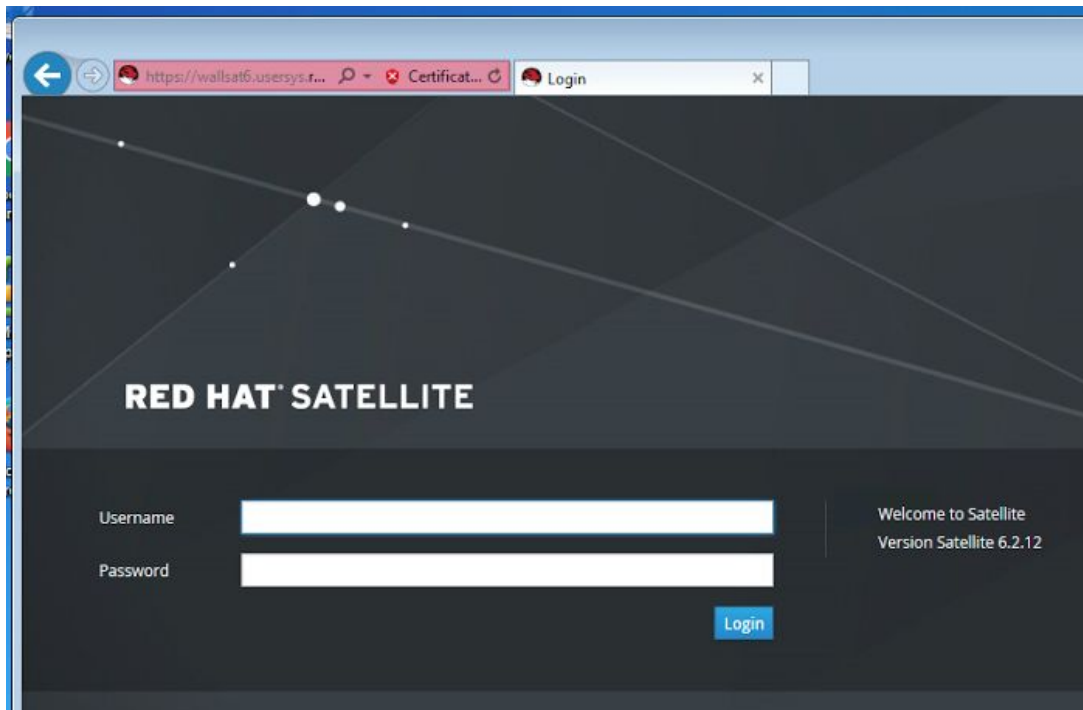
Then when I try to reach the Satellite via webUI I can see message below



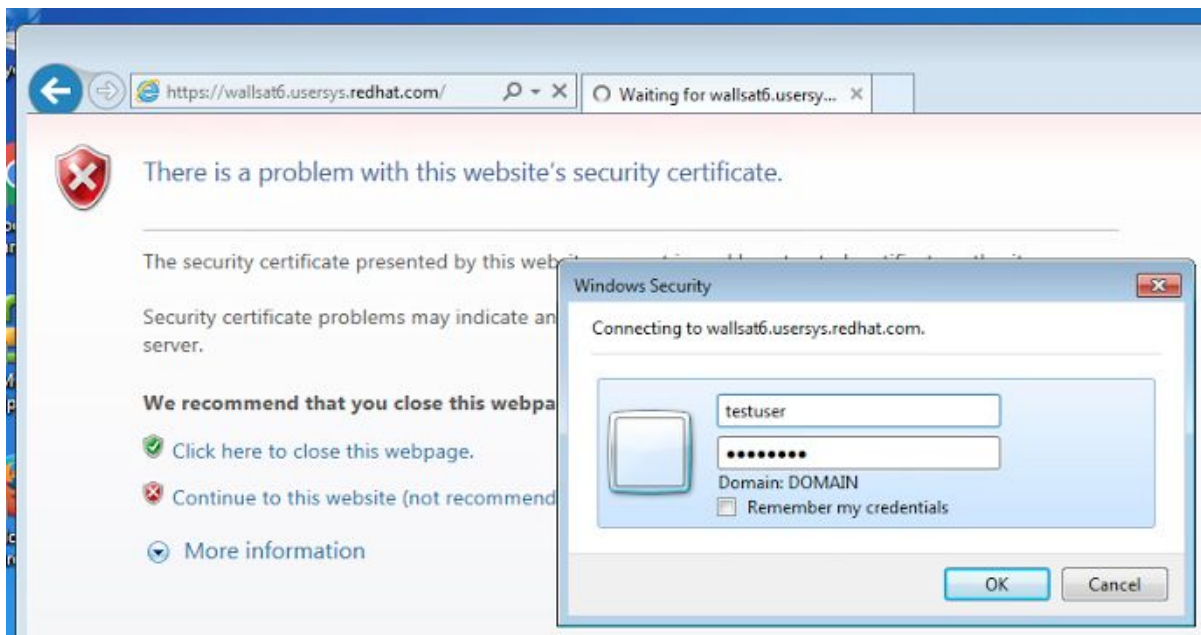
And the prompt from user and password of AD domain *DOMAIN*



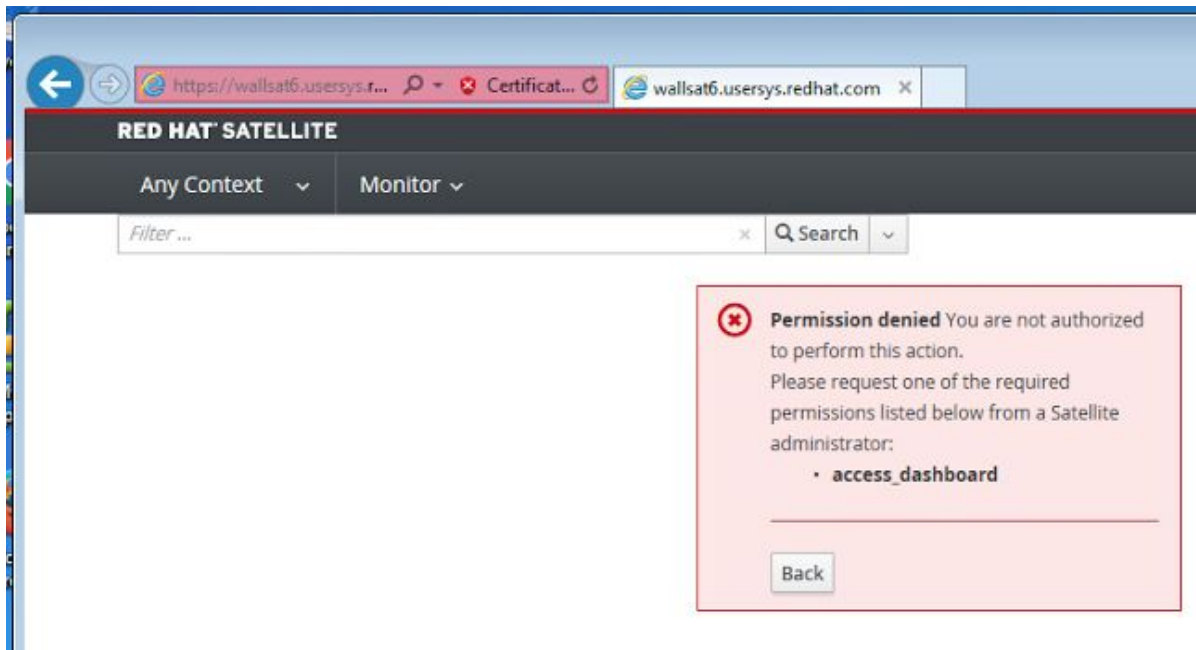
If cancel this page, Satellite will not login and will come back to the main login page.



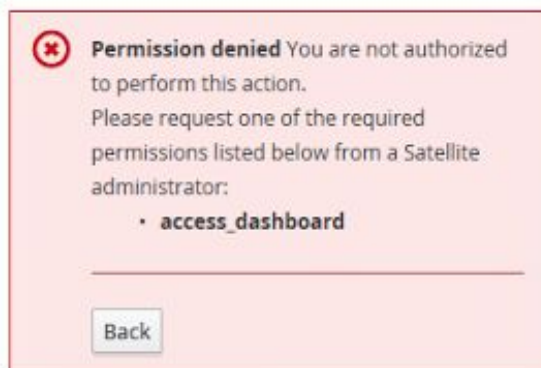
If we type the user and password of AD domain



The login works as expected.



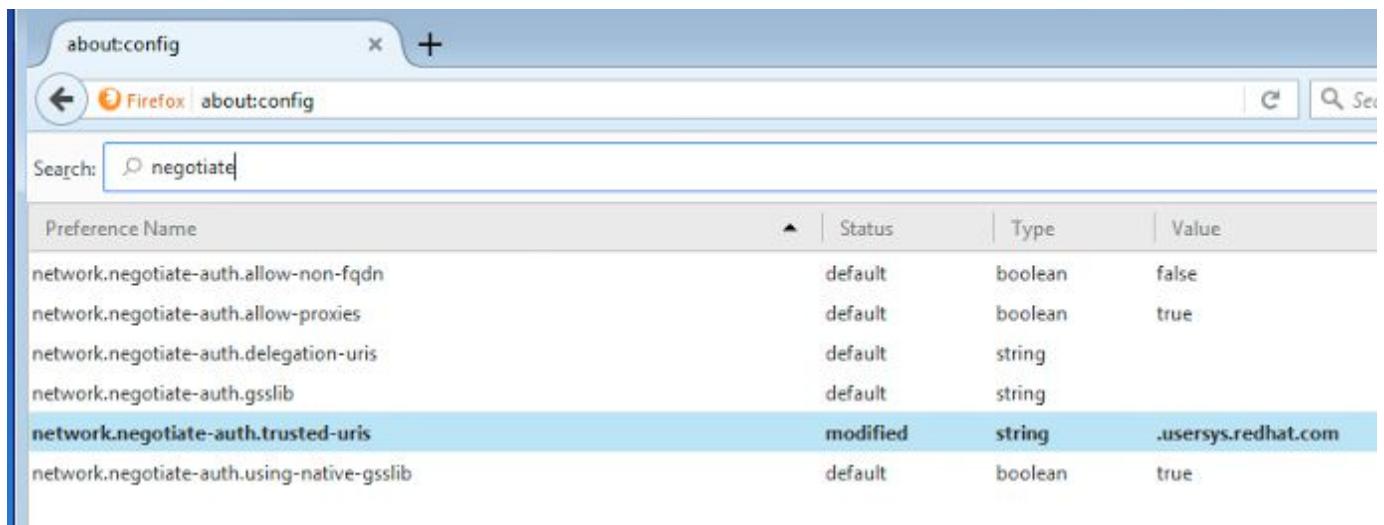
Here the IE version.



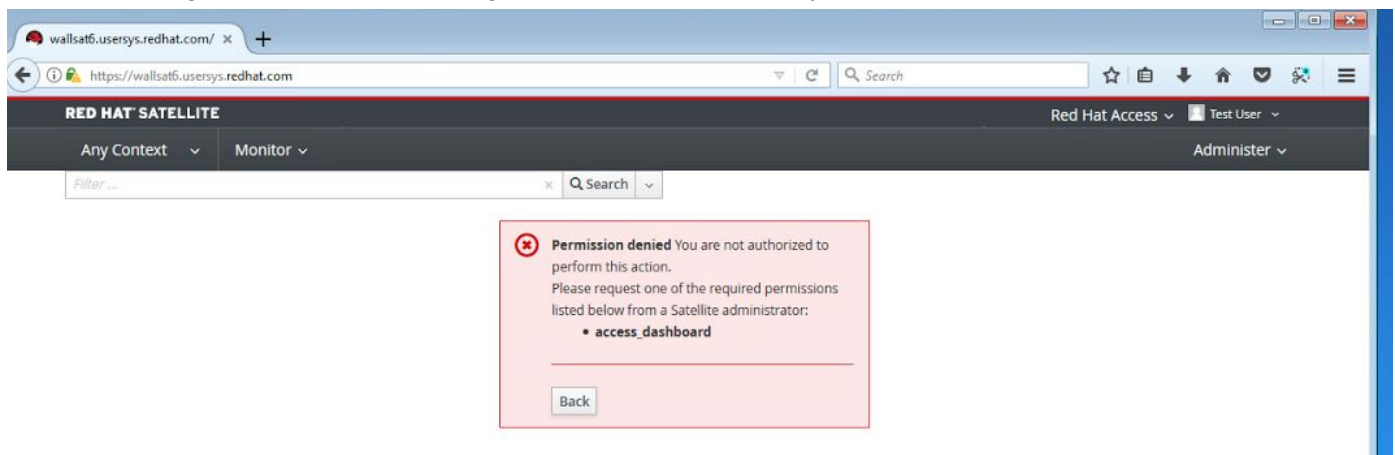
Just to complement, IE is not logging automatically as expected.

Firefox

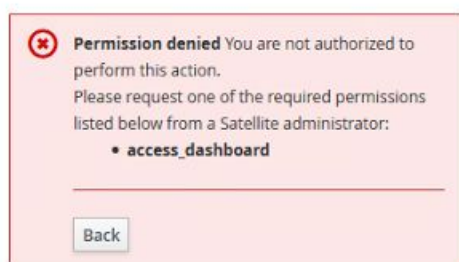
Again the configuration as recommended in our official docs



When reaching Satellite webUI the login happens automatically, as expected.

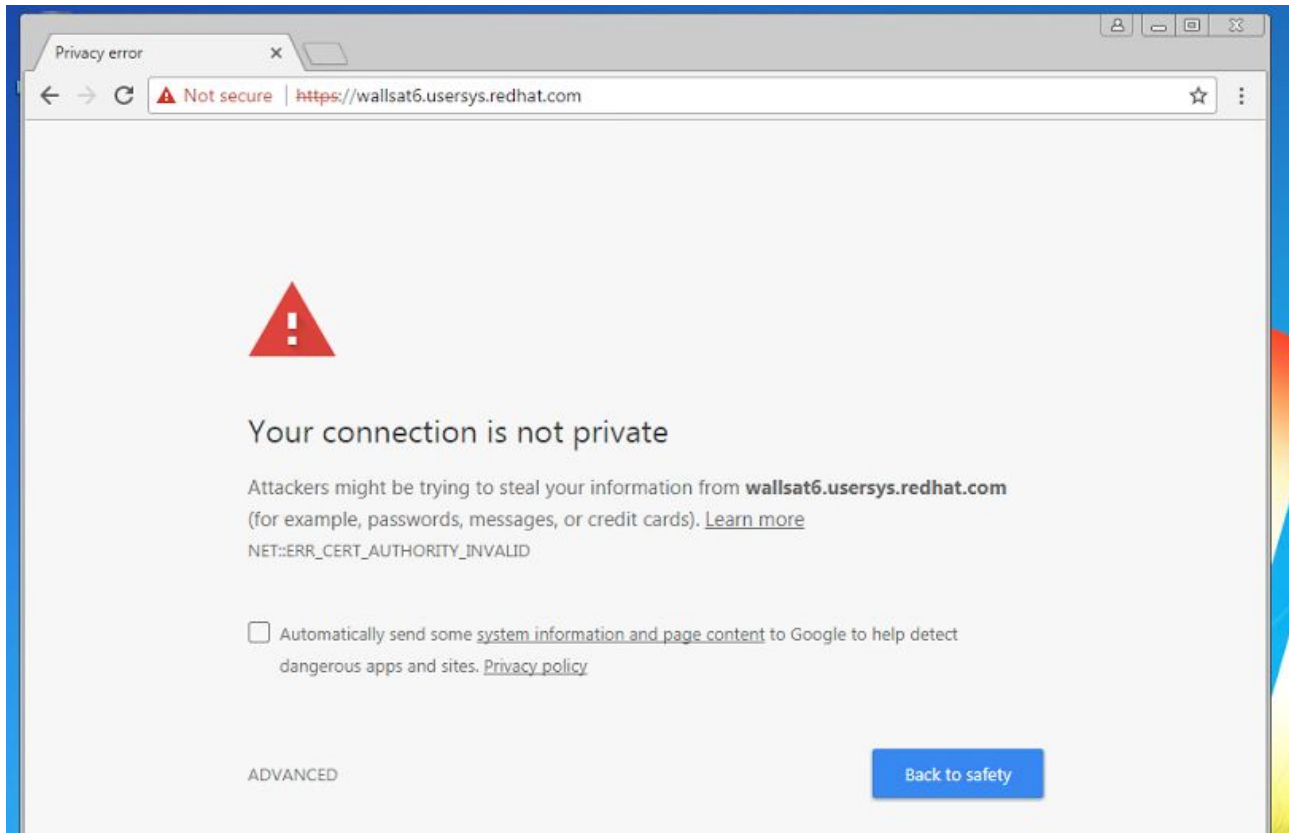


Firefox Version

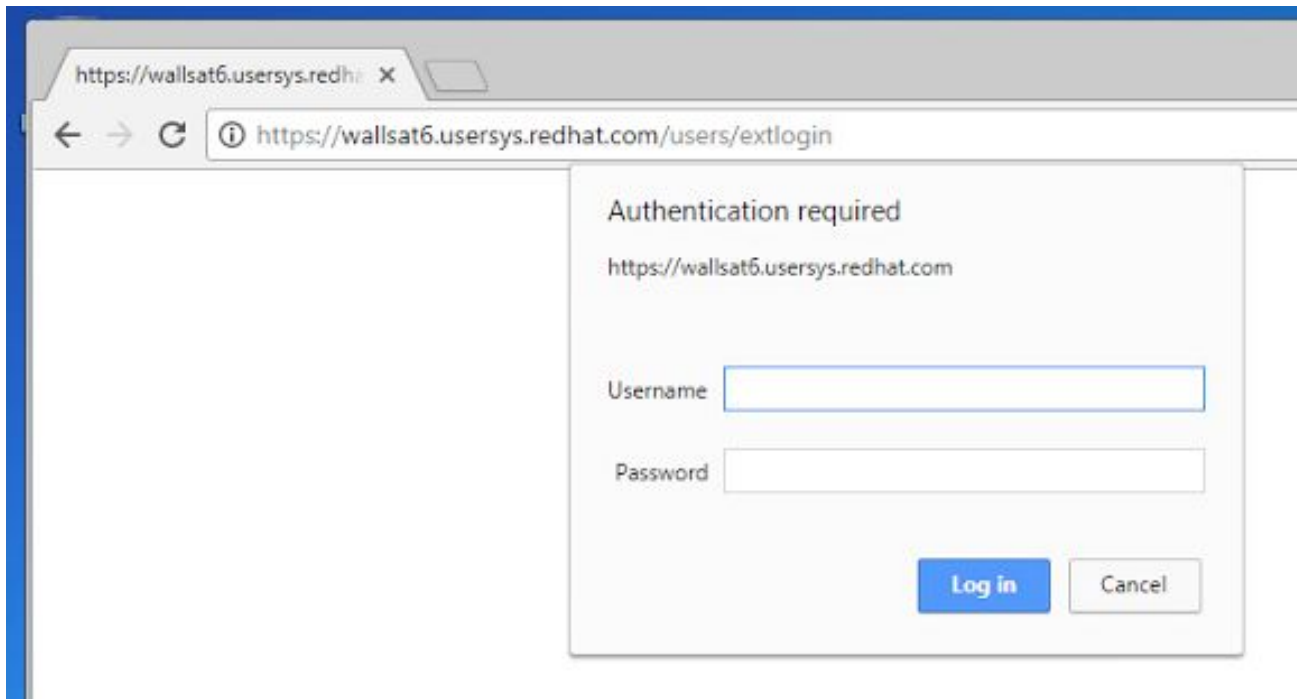


Chrome

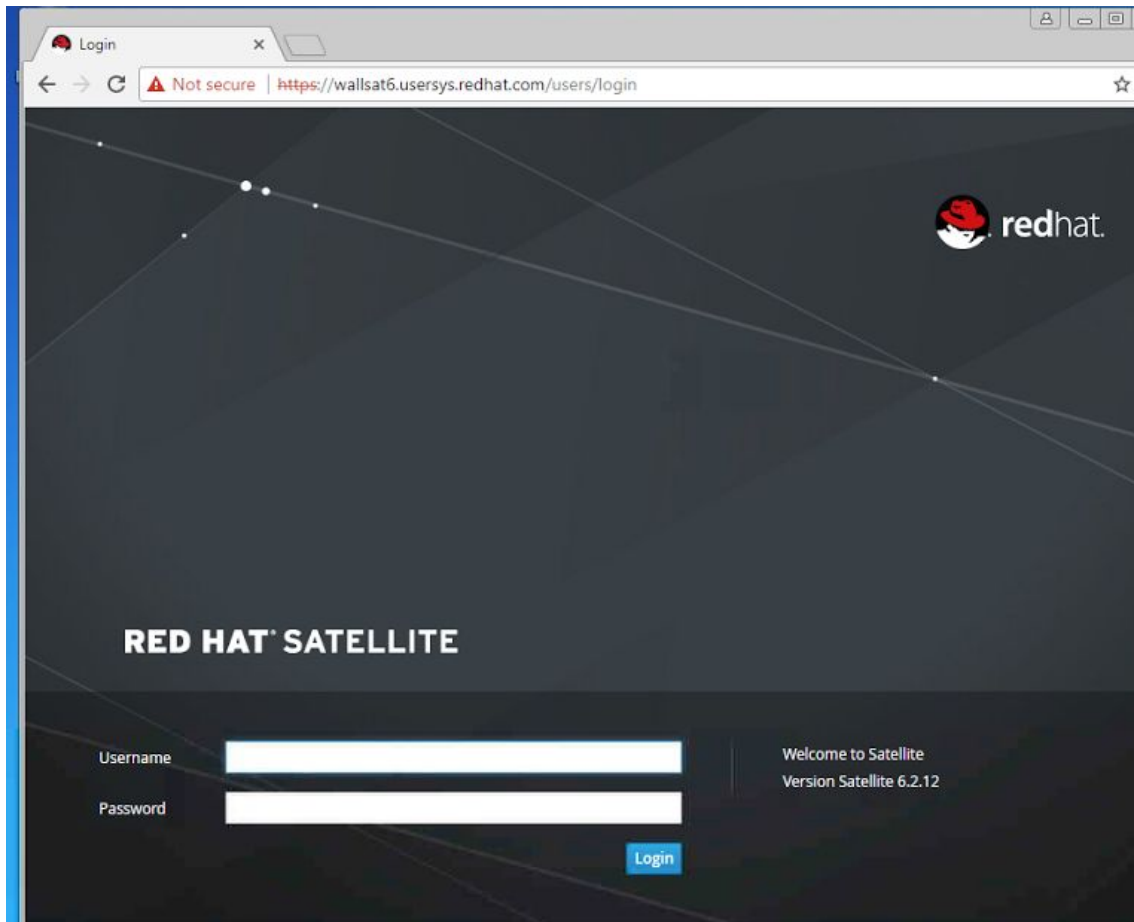
I believe chrome is not supported but let's check the behavior.



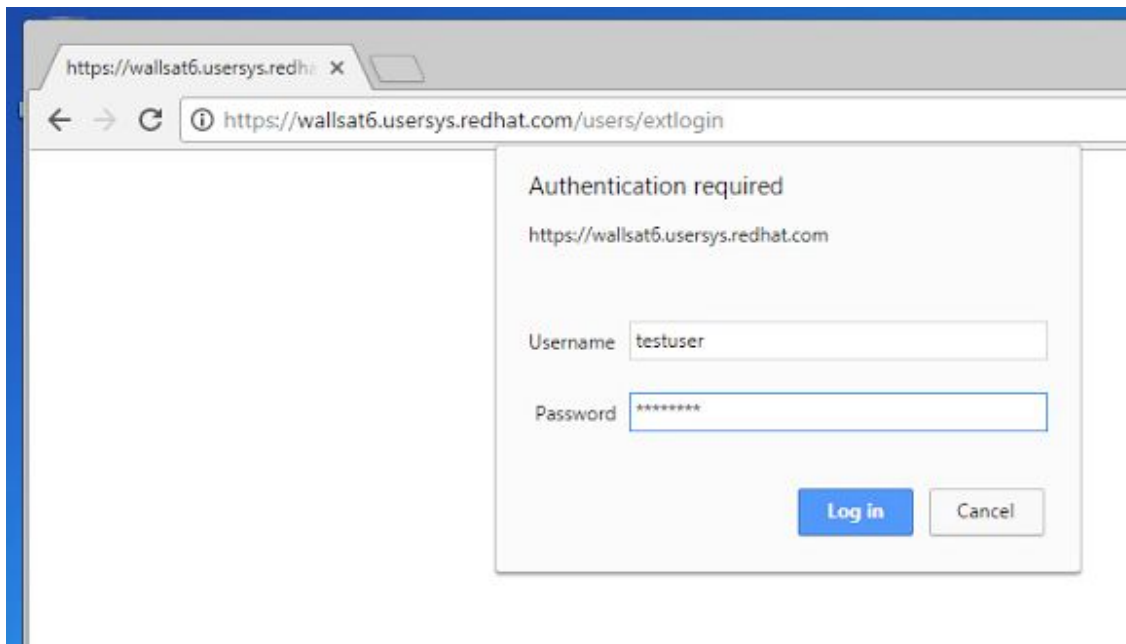
When accessing the login page



If we cancel will be redirected to the main Satellite page.



If we type user and password from AD



Will be redirected to the main Satellite page too.

