

# RHV 4 Installation Errors

## Hardware

Installing RHV 4 on a Cisco UCS C220 - Runs RHEVH 3.6 flawlessly

### Physical Display



### Properties

ID : 3  
Product Name : **Cisco UCS C220 M4S**  
Vendor : **Cisco Systems Inc** PID : **UCSC-C220-M4S**  
Revision : 0 Serial : **FCH1907V1U6**  
Name :   
User Label :   
Unique Identifier : **7edb1dc8-0b18-11e6-0000-000000000004**  
Service Profile : [org-root/ls-RHEV-Rack-Infra-3](#)  
Locator LED :

### Summary

Number of Processors : 2 Cores Enabled : 24  
Cores : 24 Threads : 48  
Effective Memory (MB) : 262144 Total Memory (MB) : 262144  
Operating Memory Speed : 2133 Operating Memory Voltage : **Regular Voltage**  
Adapters : 1  
NICs : 7 HBAs : 0  
Original UUID : **096eacb6-5e32-41d4-95eb-87da8c8130c4**

## Red Hat Software

rhevms-appliance-20160818.0-1.x86\_64.rhevms.ova  
RHVH-4.0-20160817.1-RHVH-x86\_64-dvd1.iso

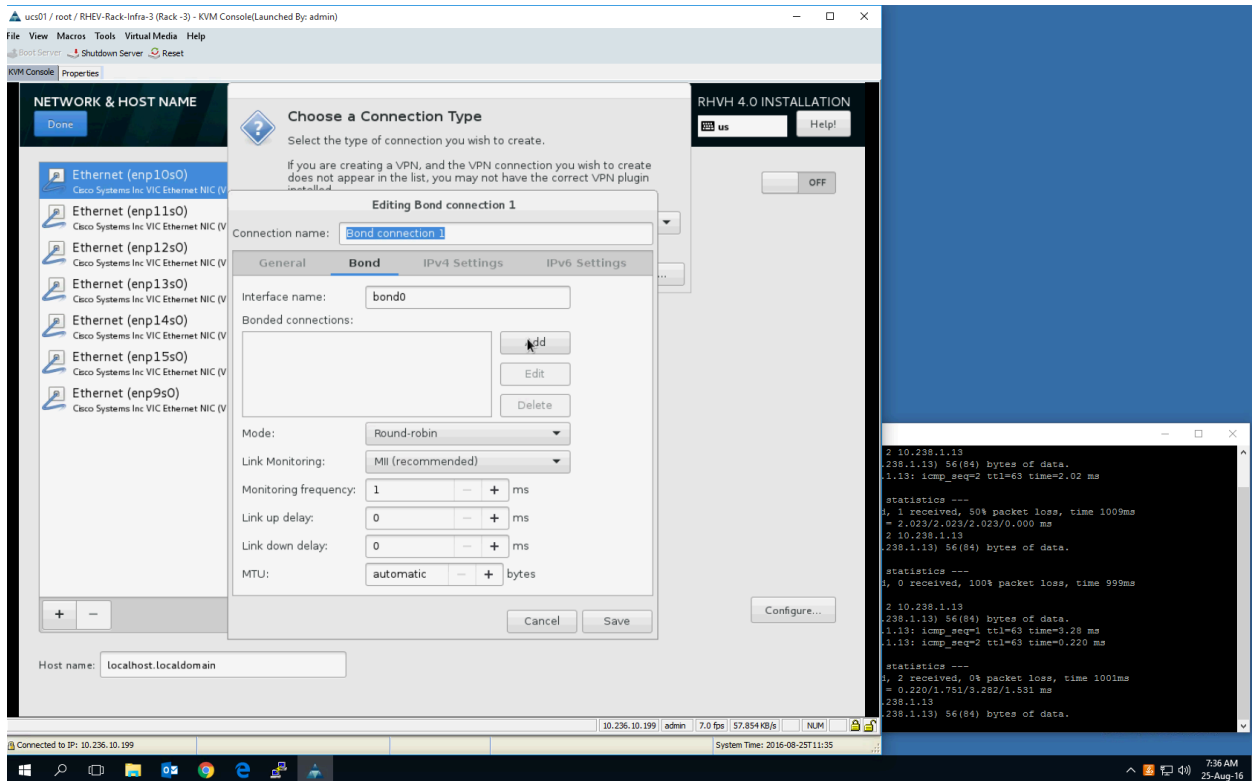
---

## INSTALLATION

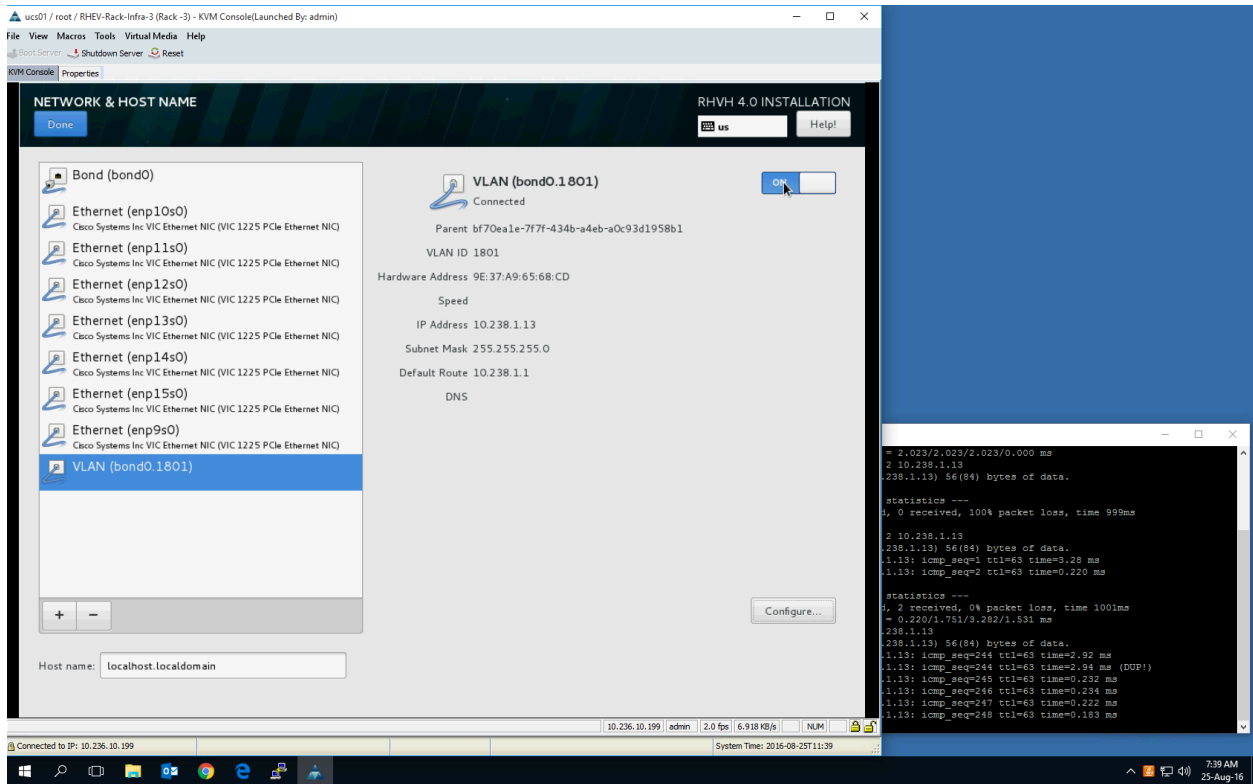
Initial boot, set up

**Issue #1, Network GUI**, have to enter information gradually and save as the windows suddenly close losing all information. This happens all the time.

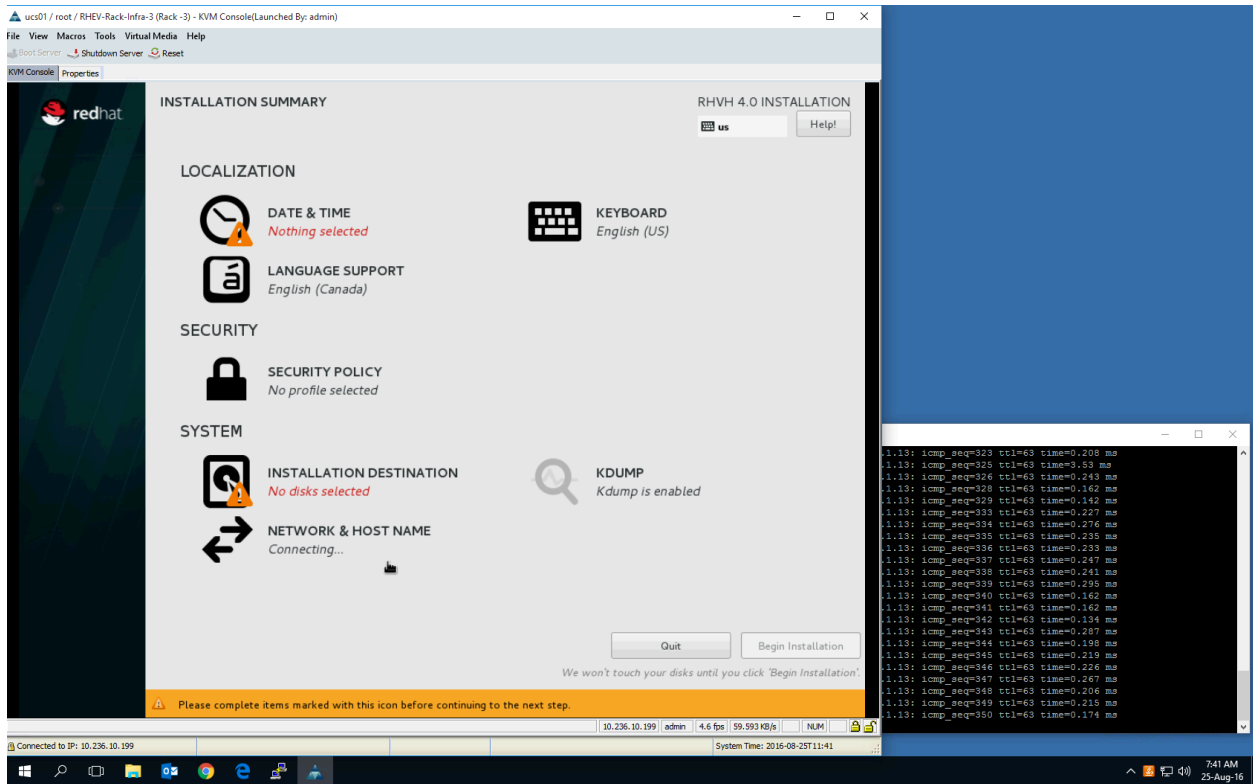
Create bond:



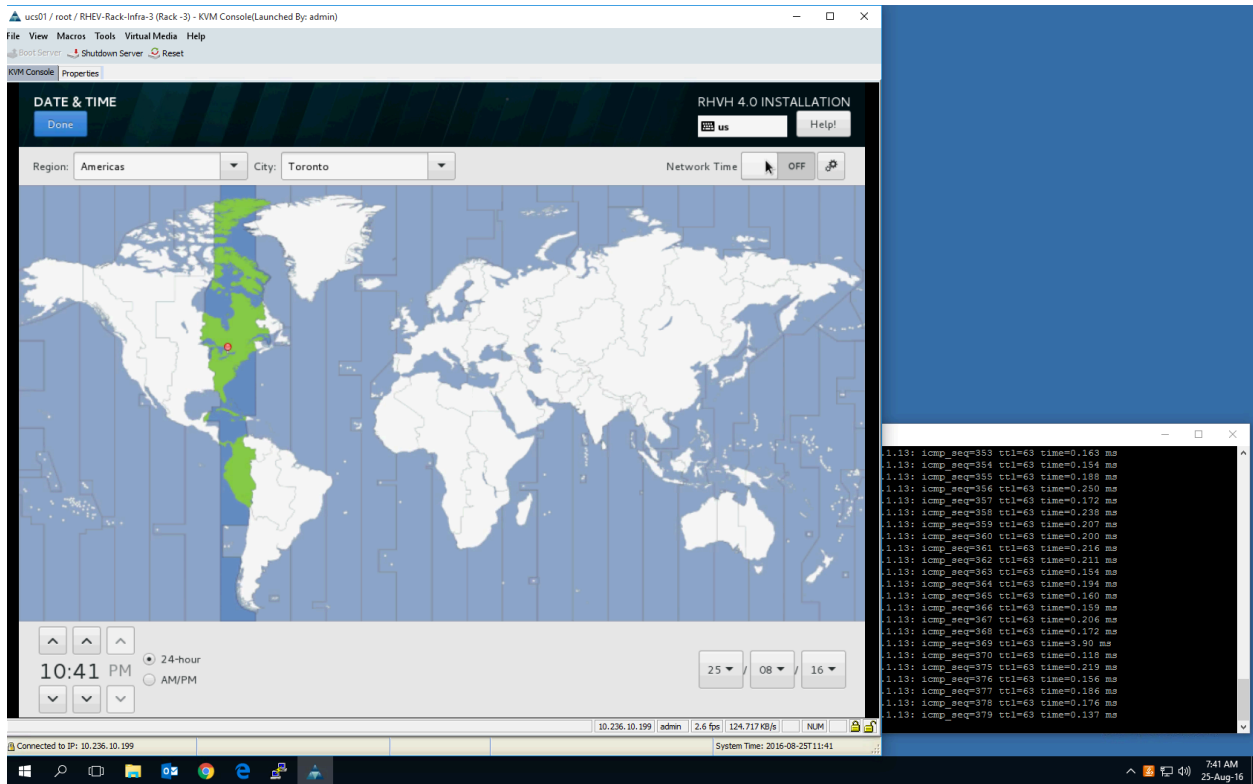
**Issue #2 Bond shows as disconnected**, even though it can be pinged (shown in PuTTY window)



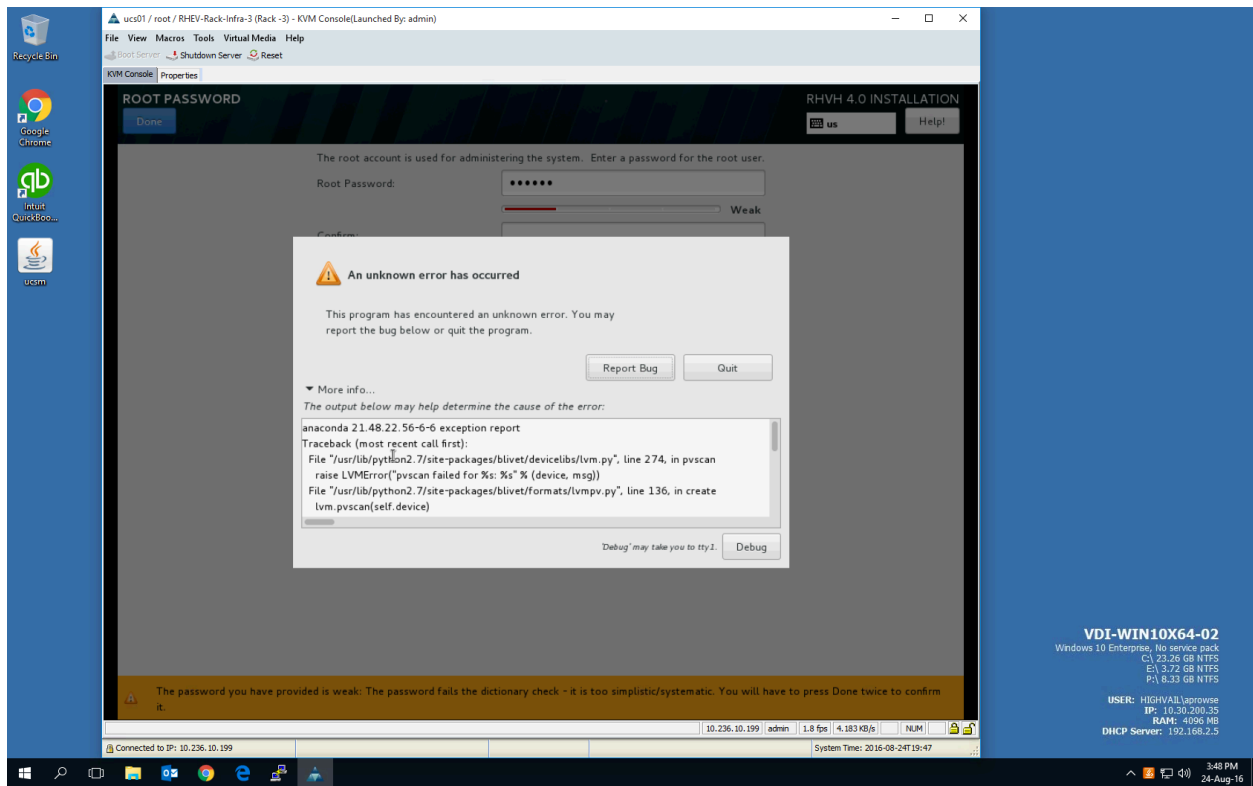
**Issue #3 Network shows as connecting,** even though it is reachable, and returns ping requests



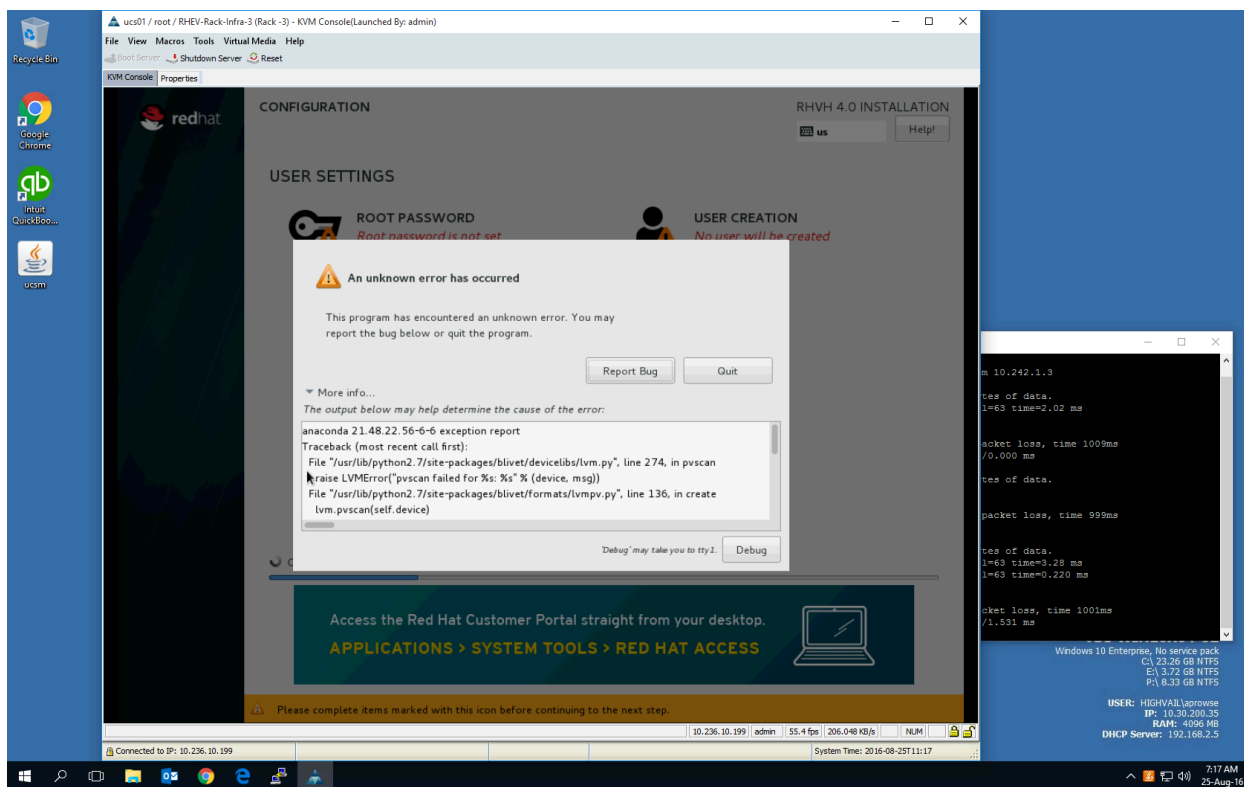
Issue #4 Cannot enable NTP



**Issue #5 Installation Fails when selecting LVM Thin Provisioning (4 attempts, all failed)**



## Issue #6 Installation Fails when selecting Regular LVM



Issue #7 Installation Fails when selecting regular partitions

ucsd1 / root / RHEV-Rack-Infra-3 (Rack -3) - KVM Console(Launched By: admin)

File View Macros Tools Virtual Media Help

Boot Server Shutdown Server Reset

KVM Console Properties

### MANUAL PARTITIONING

Done

RHVH 4.0 INSTALLATION

us Help!

**New RHVH 4.0 Installation**

**SYSTEM**

- /boot sda1 1024 MiB
- /var sda2 15 GiB
- / sda5 258.46 GiB
- swap sda3 4096 MiB

AVAILABLE SPACE: 1274.5 KiB TOTAL SPACE: 278.46 GiB

1 storage device selected

**sda1**

Mount Point: /boot Device(s): Cisco UCSC-MRAID12G (sda)

Desired Capacity: 1024 MiB

Device Type: Standard Partition  Encrypt

File System: ext4  Reformat

Label: Name: sda1

Update Settings

Note: The settings you make on this screen will not be applied until you click on the main menu's 'Begin Installation' button.

Reset All

Connected to IP: 10.236.10.199 | 10.236.10.199 | admin | 2.6 fps | 56.54 KB/s | NUM | System Time: 2016-08-25T11:42

7:42 AM 25-Aug-16

```

1.13: icmp_seq=405 ttl=63 time=0.227 ms
1.13: icmp_seq=406 ttl=63 time=0.146 ms
1.13: icmp_seq=407 ttl=63 time=0.240 ms
1.13: icmp_seq=408 ttl=63 time=0.208 ms
1.13: icmp_seq=409 ttl=63 time=0.146 ms
1.13: icmp_seq=410 ttl=63 time=0.172 ms
1.13: icmp_seq=411 ttl=63 time=2.22 ms
1.13: icmp_seq=412 ttl=63 time=0.195 ms
1.13: icmp_seq=413 ttl=63 time=0.155 ms
1.13: icmp_seq=414 ttl=63 time=0.209 ms
1.13: icmp_seq=415 ttl=63 time=0.145 ms
1.13: icmp_seq=416 ttl=63 time=0.246 ms
1.13: icmp_seq=417 ttl=63 time=0.246 ms
1.13: icmp_seq=418 ttl=63 time=0.246 ms
1.13: icmp_seq=419 ttl=63 time=0.246 ms
1.13: icmp_seq=420 ttl=63 time=0.228 ms
1.13: icmp_seq=421 ttl=63 time=0.163 ms
1.13: icmp_seq=422 ttl=63 time=0.165 ms
1.13: icmp_seq=423 ttl=63 time=0.226 ms
1.13: icmp_seq=424 ttl=63 time=0.163 ms
1.13: icmp_seq=425 ttl=63 time=0.236 ms
1.13: icmp_seq=426 ttl=63 time=0.179 ms
1.13: icmp_seq=427 ttl=63 time=0.171 ms
1.13: icmp_seq=428 ttl=63 time=0.169 ms
1.13: icmp_seq=429 ttl=63 time=0.159 ms
1.13: icmp_seq=430 ttl=63 time=0.196 ms
1.13: icmp_seq=431 ttl=63 time=0.261 ms

```

ucsd1 / root / RHEV-Rack-Infra-3 (Rack -3) - KVM Console(Launched By: admin)

File View Macros Tools Virtual Media Help

Boot Server Shutdown Server Reset

KVM Console Properties

### CONFIGURATION

RHVH 4.0 INSTALLATION

us Help!

**USER SETTINGS**

ROOT PASSWORD: Root password is set

USER CREATION: No user will be created

**An unknown error has occurred**

This program has encountered an unknown error. You may report the bug below or quit the program.

Report Bug Quit

More info...

The output below may help determine the cause of the error:

```

anaconda 21.48.22.56-6-6 exception report
Traceback (most recent call first):
  File "/usr/lib64/python2.7/site-packages/pyanaconda/nm.py", line 125, in _get_property
    raise UnknownMethodGetError
  File "/usr/lib64/python2.7/site-packages/pyanaconda/nm.py", line 182, in nm_devices
    device_type = _get_property(device, "DeviceType", "Device")

```

Debug may take you to tty1. Debug

Writing network configuration

**ANSWERS IN AN INSTANT**

RECOMMENDATIONS POWERED BY ANDREAS

access.redhat.com/support/cases/

Connected to IP: 10.236.10.199 | 10.236.10.199 | admin | 1.6 fps | 2.91 KB/s | NUM | System Time: 2016-08-25T11:44

7:45 AM 25-Aug-16

```

1.13: icmp_seq=513 ttl=63 time=0.185 ms
1.13: icmp_seq=514 ttl=63 time=0.168 ms
1.13: icmp_seq=515 ttl=63 time=0.160 ms
1.13: icmp_seq=516 ttl=63 time=0.223 ms
1.13: icmp_seq=517 ttl=63 time=3.60 ms
1.13: icmp_seq=518 ttl=63 time=0.223 ms
1.13: icmp_seq=519 ttl=63 time=0.137 ms
1.13: icmp_seq=520 ttl=63 time=0.234 ms
1.13: icmp_seq=521 ttl=63 time=0.216 ms
1.13: icmp_seq=522 ttl=63 time=0.222 ms
1.13: icmp_seq=523 ttl=63 time=0.146 ms
1.13: icmp_seq=524 ttl=63 time=0.207 ms
1.13: icmp_seq=525 ttl=63 time=0.134 ms
1.13: icmp_seq=526 ttl=63 time=0.266 ms
1.13: icmp_seq=527 ttl=63 time=0.189 ms
1.13: icmp_seq=528 ttl=63 time=0.169 ms
1.13: icmp_seq=529 ttl=63 time=0.177 ms
1.13: icmp_seq=530 ttl=63 time=0.222 ms
1.13: icmp_seq=531 ttl=63 time=0.189 ms
1.13: icmp_seq=532 ttl=63 time=0.246 ms
1.13: icmp_seq=533 ttl=63 time=0.234 ms
1.13: icmp_seq=534 ttl=63 time=0.306 ms
1.13: icmp_seq=535 ttl=63 time=0.151 ms

```



Did anyone test this?