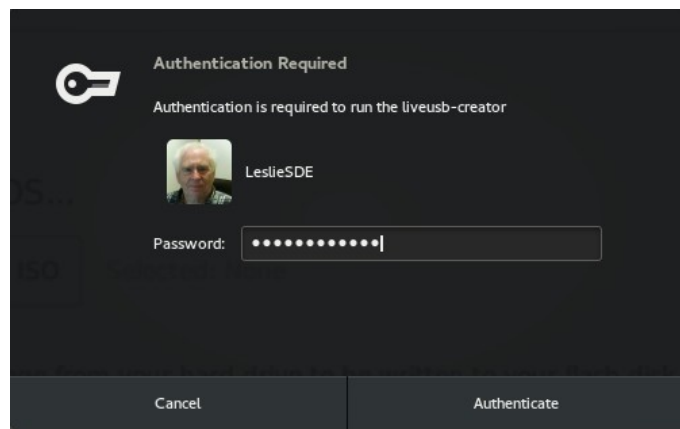
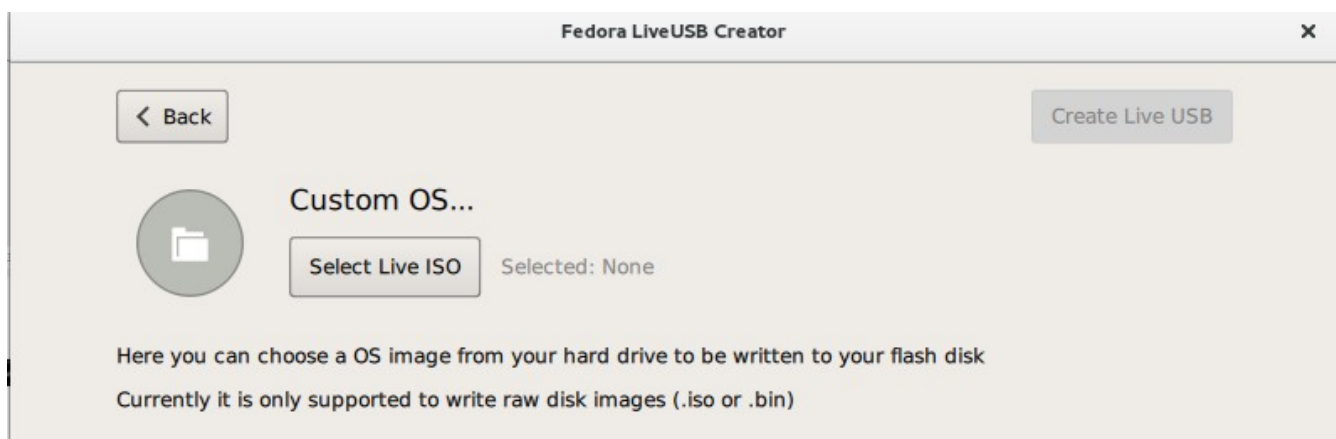


View image first and then read the comments.



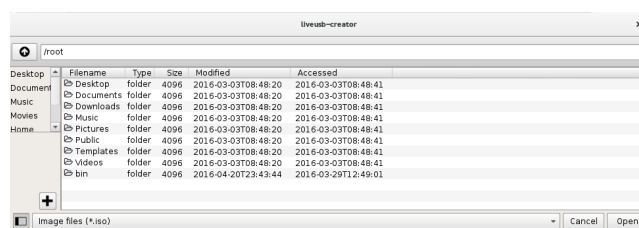
**The first Issue/Problem begins NOW. This request for password is too soon. The reason is simple, the home directory presented (see below) is not that of the user.**

**Second test: There is no flash drive as yet installed. Much of the first tests were done with the flashdrive pre-installed.**



**Leading to the Problem**

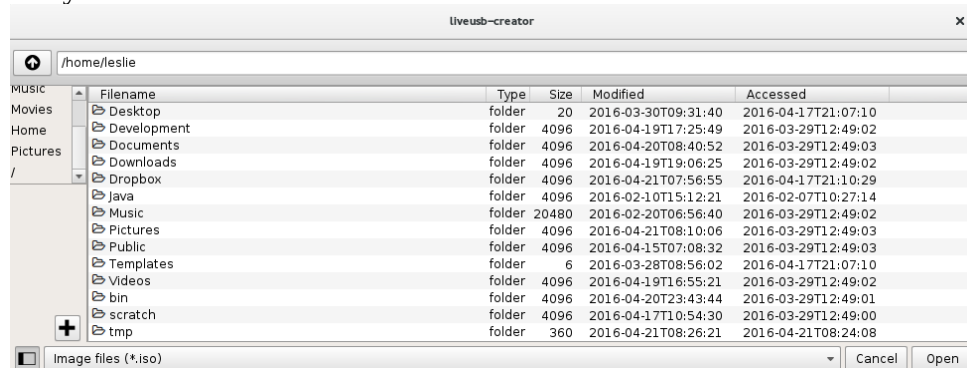
**The Second Issue/Problems.**



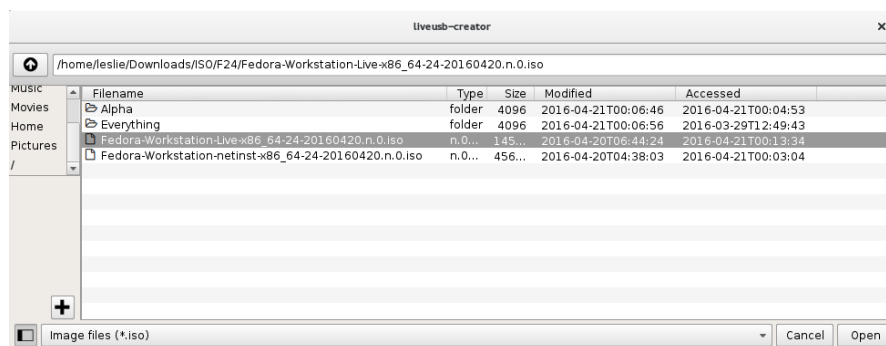
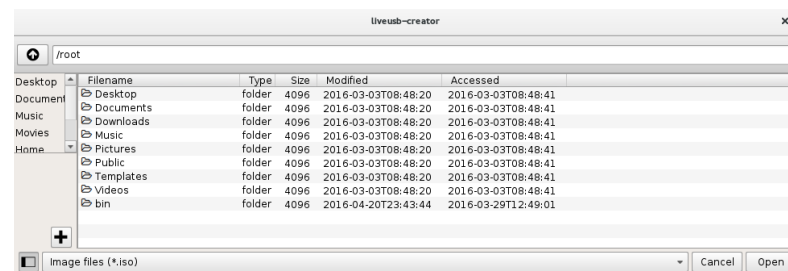
**The output is too small and not expandable.** I wear bifocals, and even when I enlarge the image and slide the bar over to show me filename I have problems to read the text. The text does not enlarge.

It is also the wrong view.

The window shown above is that from ROOT and NOT FROM THE NORMAL USER  
Corrected view My ~ Folder



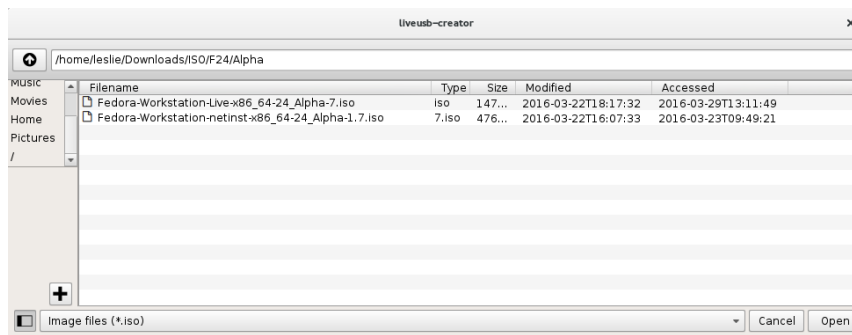
The adjusted window presenting the filename is truncating the name on the right. I manually increased the width given for the filename area. Nevertheless, the text on my 23inch Samsung monitor is very small and almost illegible.



I still have not been asked to insert a flashdrive.

Note my directory structure /home/leslie/downloads/ISO/F24 . My iso download was done to my Downloads subdirectory, and not to root's.

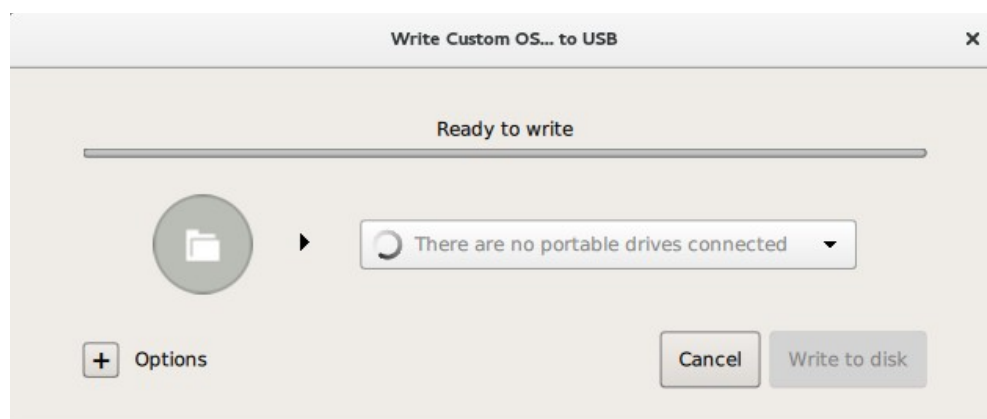
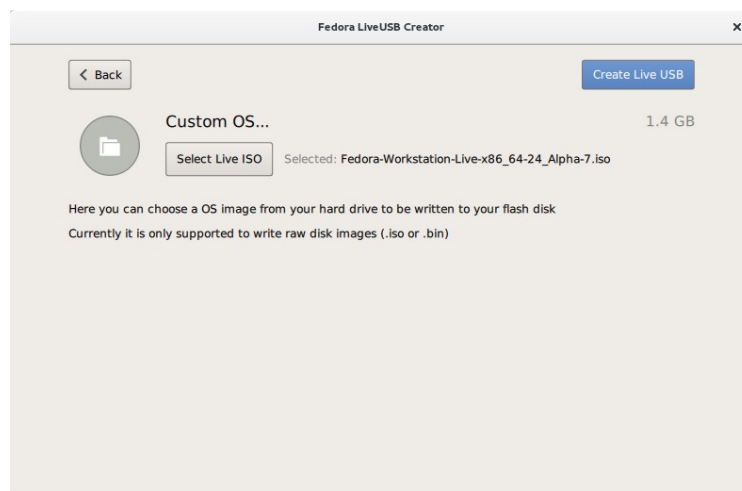
After placing the cursor and highlighting the line Live version and clicking Open



**My ISO was not selected, instead, I am propelled into the very first Directory (ALPHA). Refer to the previous PrintScreen.**

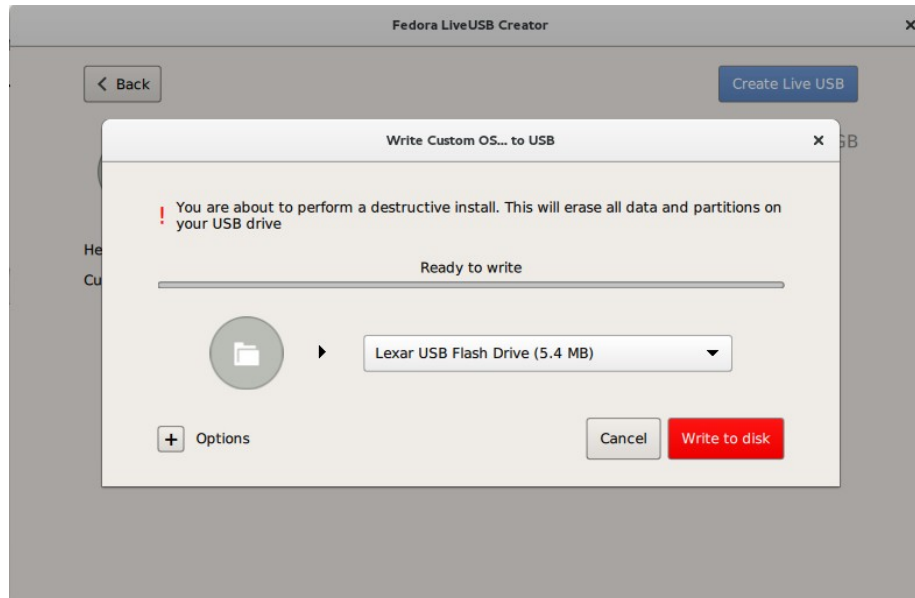
**This is a BUG.**

If I remove the Sub-Directories I am returned to this screen. So far, no FlashDrive was installed into a USB port. (I let the choice of the wrong ISO to pass so as to continue testing )



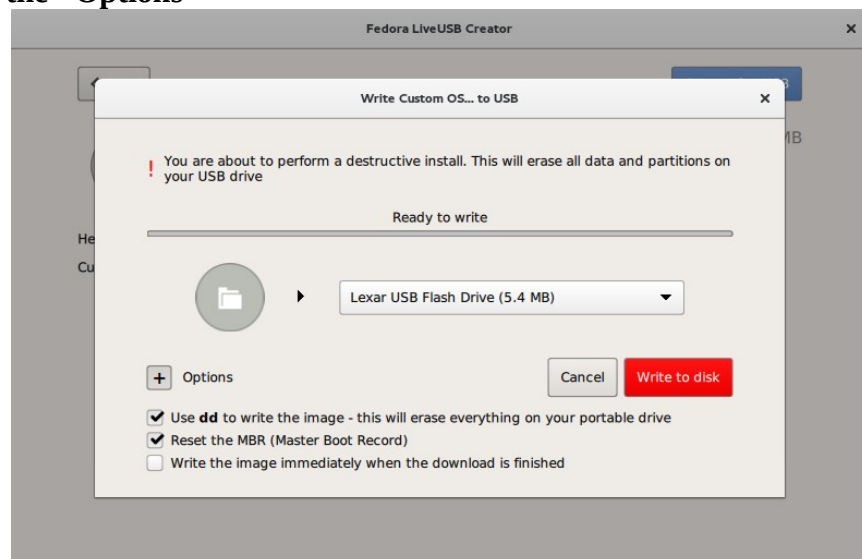
Where is the instruction to insert a FLASH DRIVE.

Next



If I hit cancel Now (The wrong ISO was chosen) We are back to the selection screen.  
But when I click onto the select Live ISO, I can't get to write the live ISO, even though the flashdrive is installed.

**And what about the +Options**

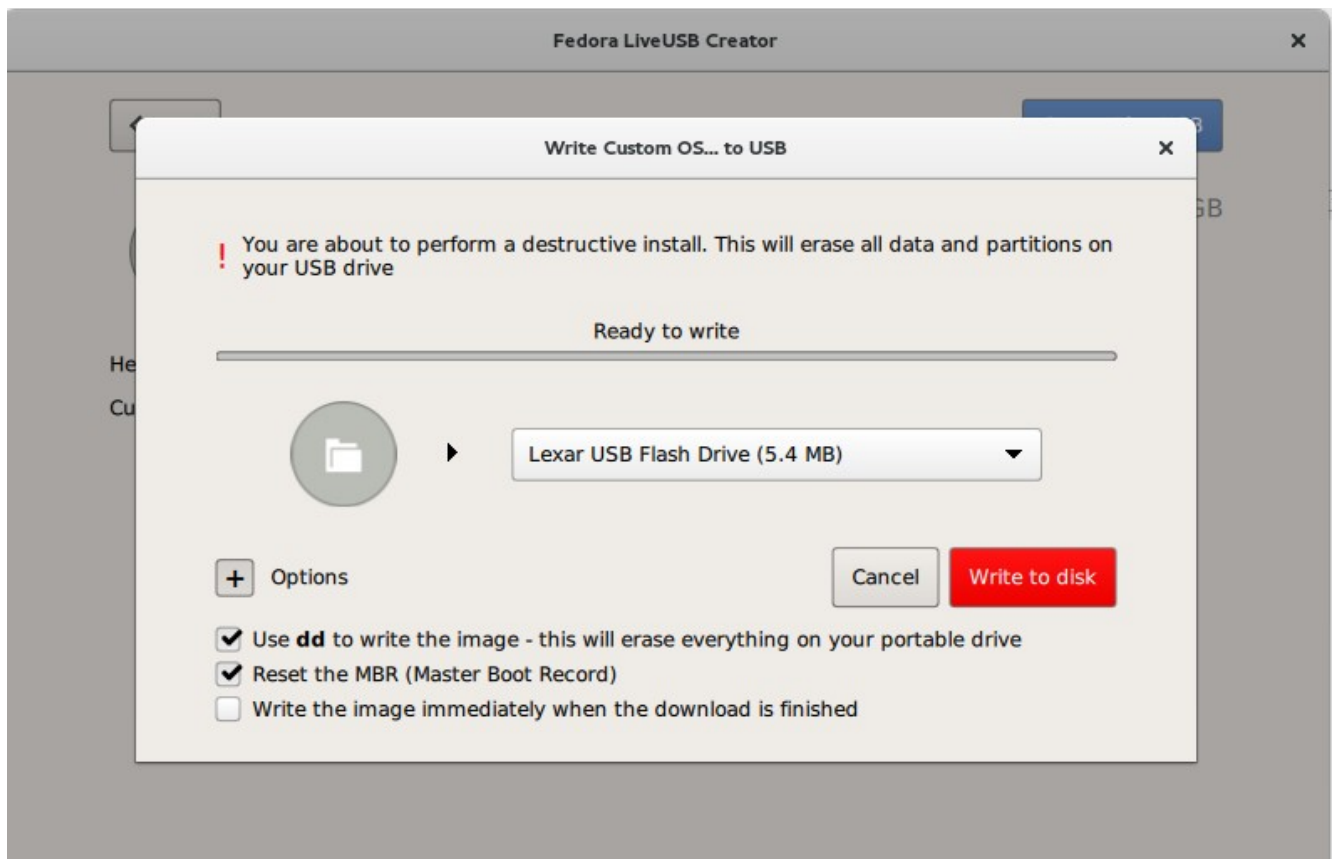


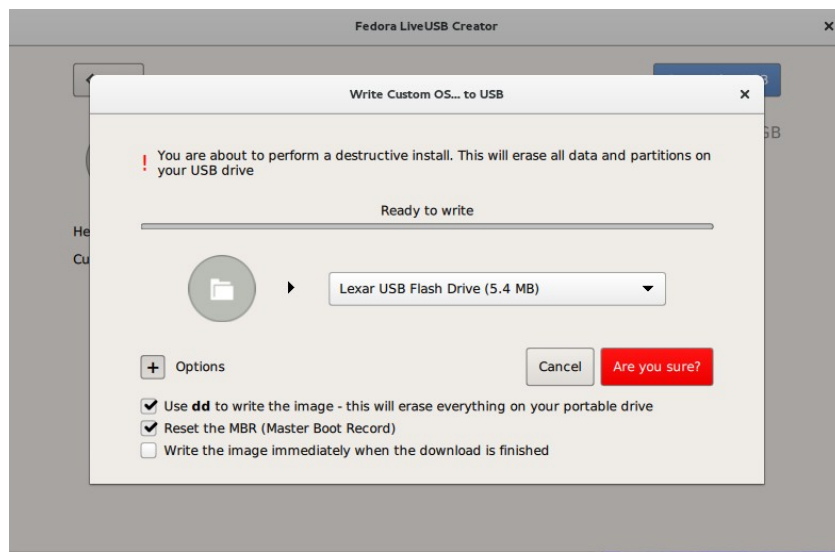
1. To what is the difference between “Portable drive and Flash Drive?”
2. To what does the second checkbox line refer? Is it the flashdrive or is it the target hard disk?
3. To what does the third checkbox line refer. Does that mean boot boot the flash drive and proceed? Does it mean “Save the image downloaded?” But I did not perform a download, I started with the Custom which allows me to choose an ISO file from a directory.

## Other

**Backing out one or two levels of folders and returning ends me up in some directory that I did not select. This part of the program (directory traversal) needs debugging as well.**

My Downloads contain sub-directories. Eg. Downloads/ISO holds a few other sub-directories vis: F23 , F24, Centos, SL, (Scientific Linux) . F24 has an Everything and an Alpha (version 7) directory

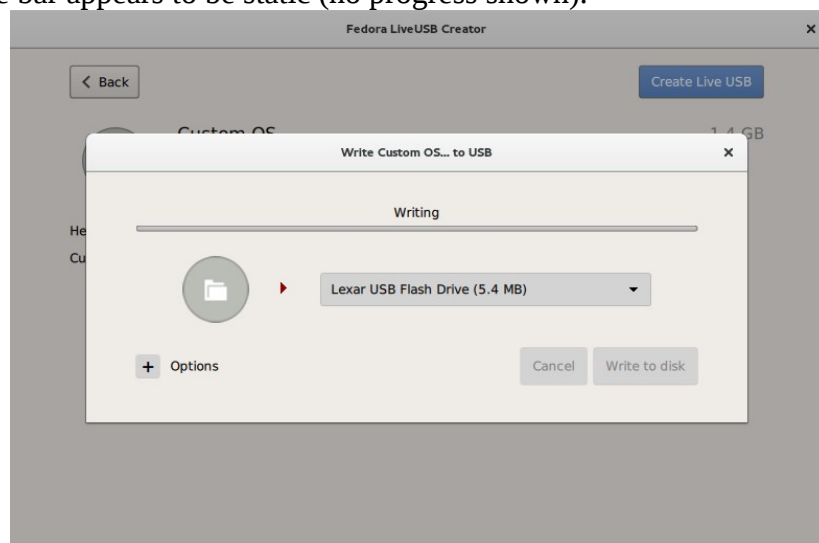




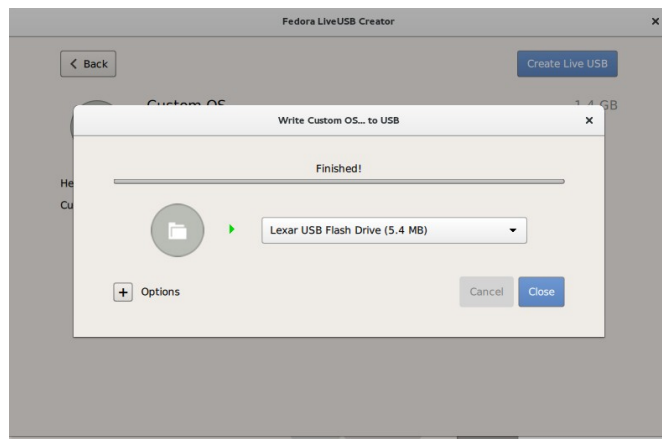
Which ISO image am I about to burn to the flashdrive?

Your asking me if I am sure? Show me the ISO file name or Custom Path. That way I will be sure

After the software started the writing. The progress bar moved very slowly. It is difficult to tell if it is writing at all, as the bar appears to be static (no progress shown).



As the flashdrive is to be overwritten, the 5.4mb message is wrong. This flashdrive is 15gigs in size. (I see the hard disk light flashing. Lexar and other companies sell flashdrives without lights. The particular flashdrive has no light. It appears to me that **the program does not issue a sync call after the flashdrive has been created and before I exited the program?** It must issue a sync call. When finished appeared, I exited the program. It appeared to me that the dd command buffers were not flushed, resulting in a corrupted flashdrive. Do not issue "Finished" message before the sync call has completed.



The finished message. Note that the progress bar was never advanced. As well.

The software has a lot of “refining” to make it a worthwhile product.

Hope this feedback helps.

Leslie Satenstein  
Montreal Quebec, Canada  
leslie.satenstein@yahoo.com