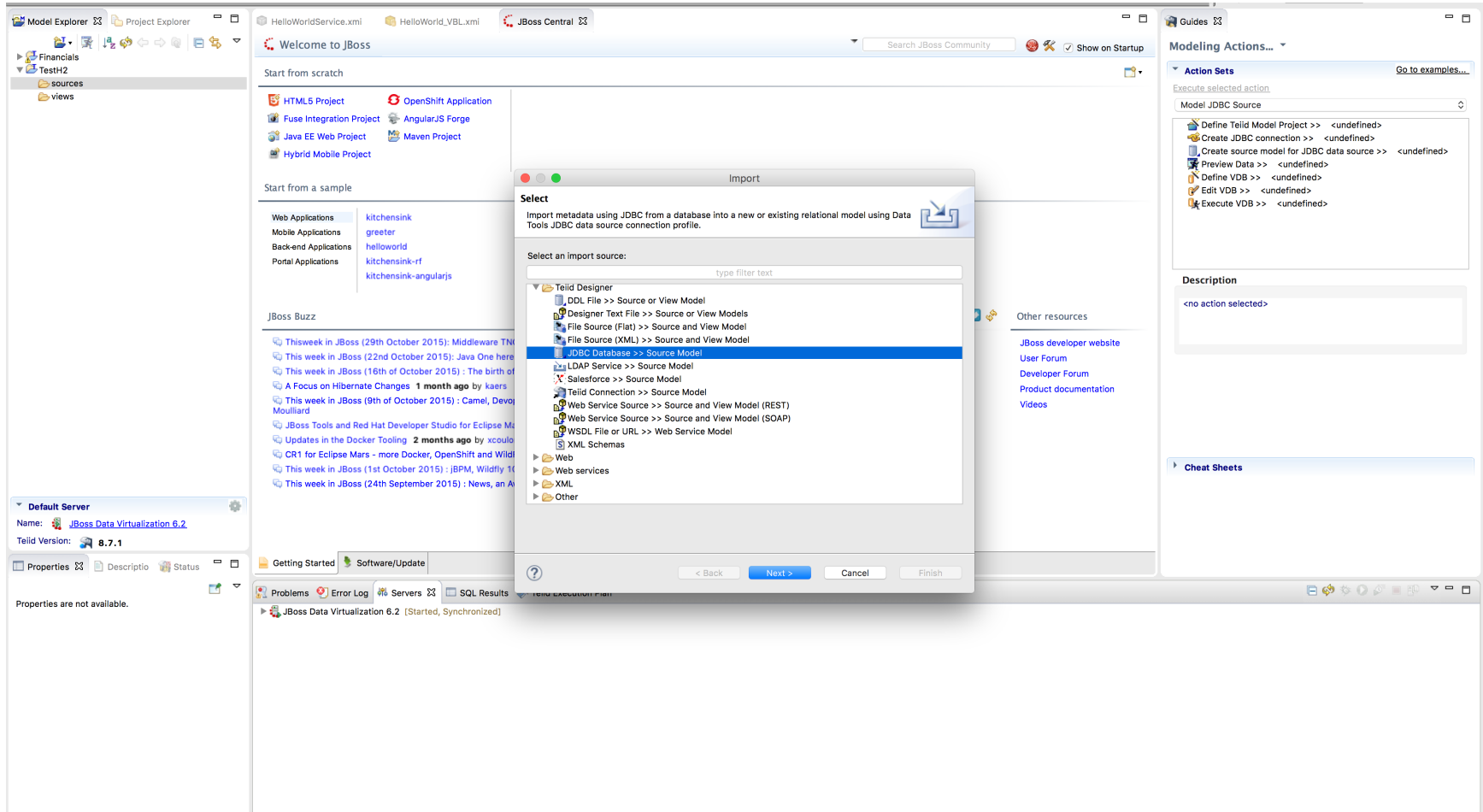
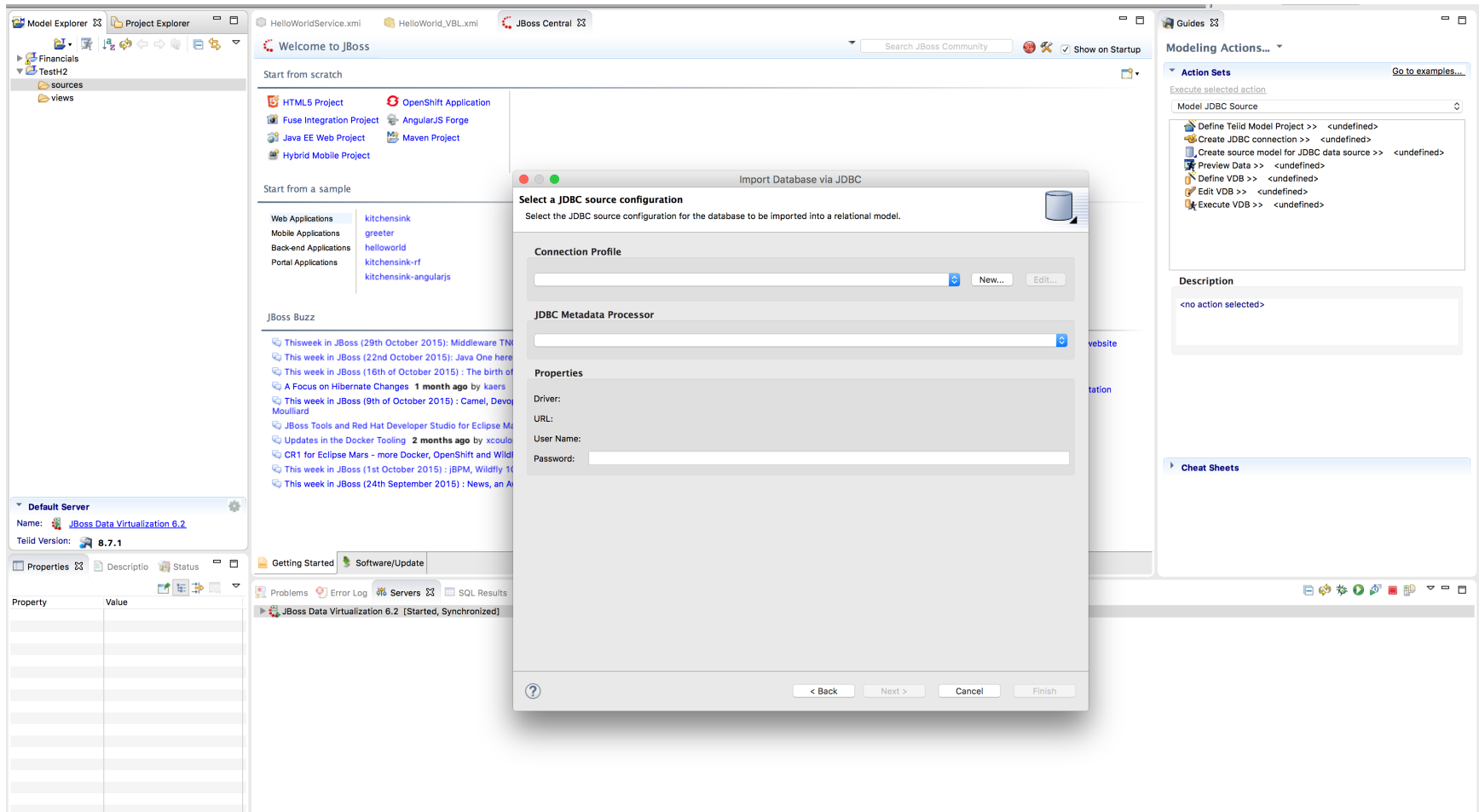


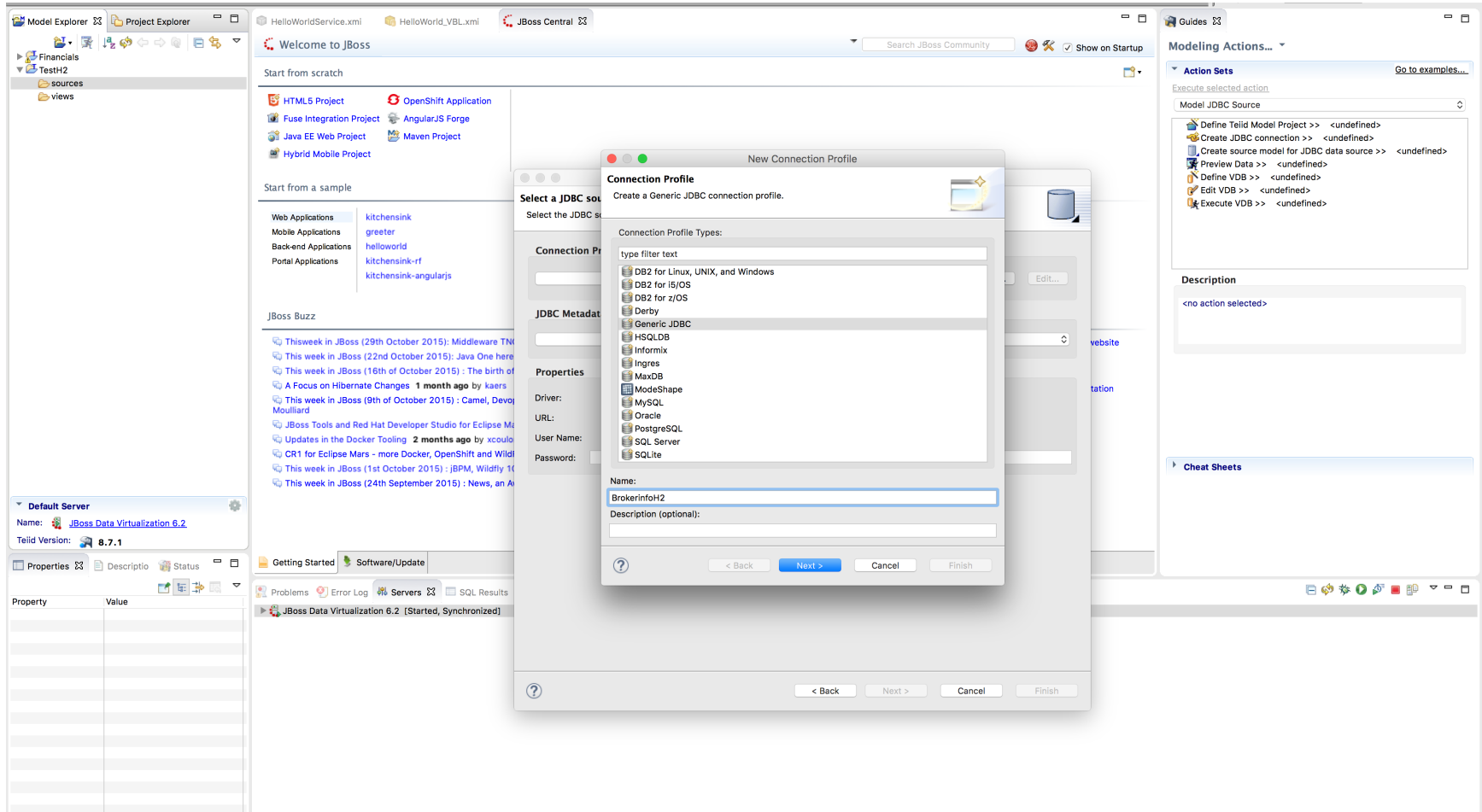
Step 1



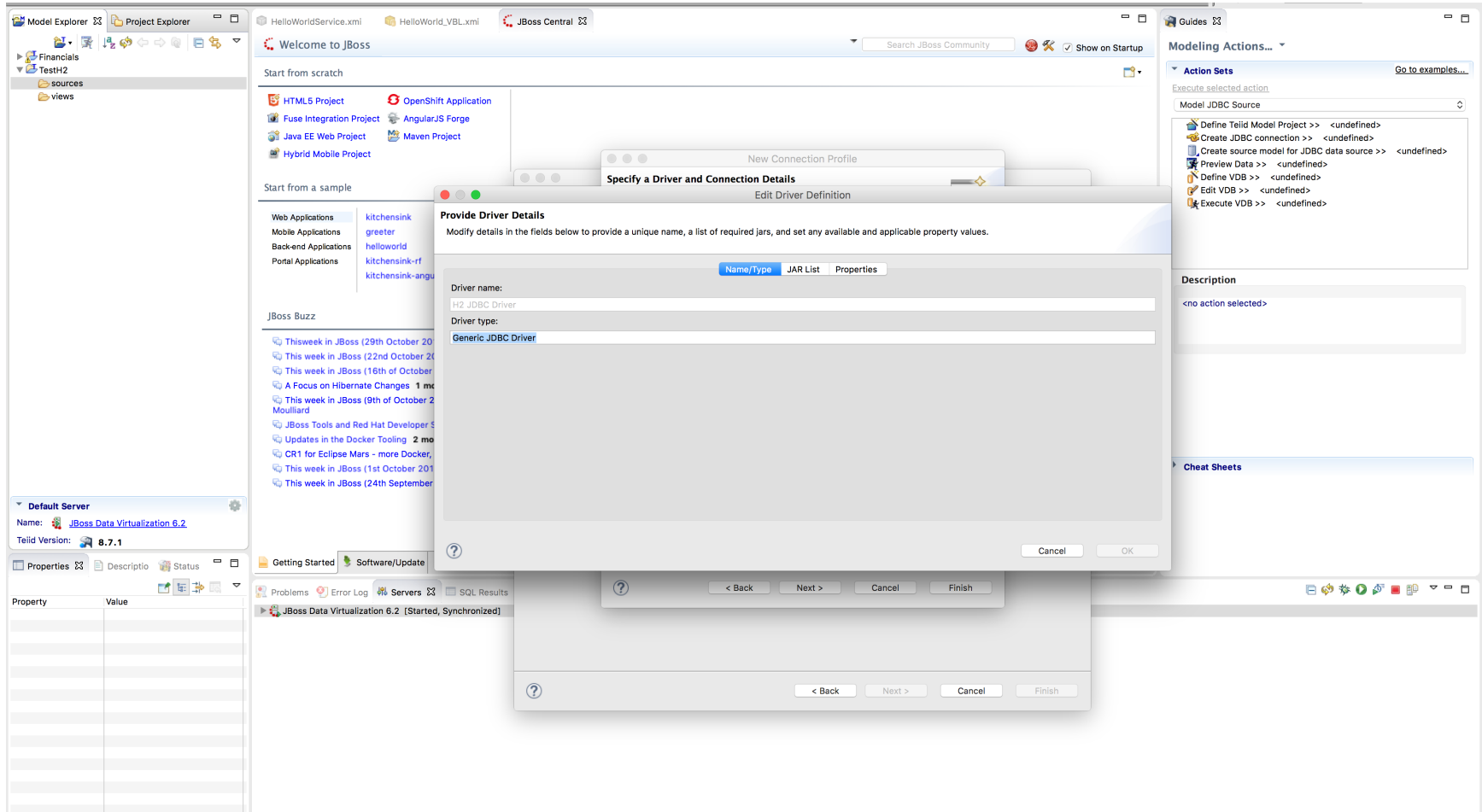
Step 2



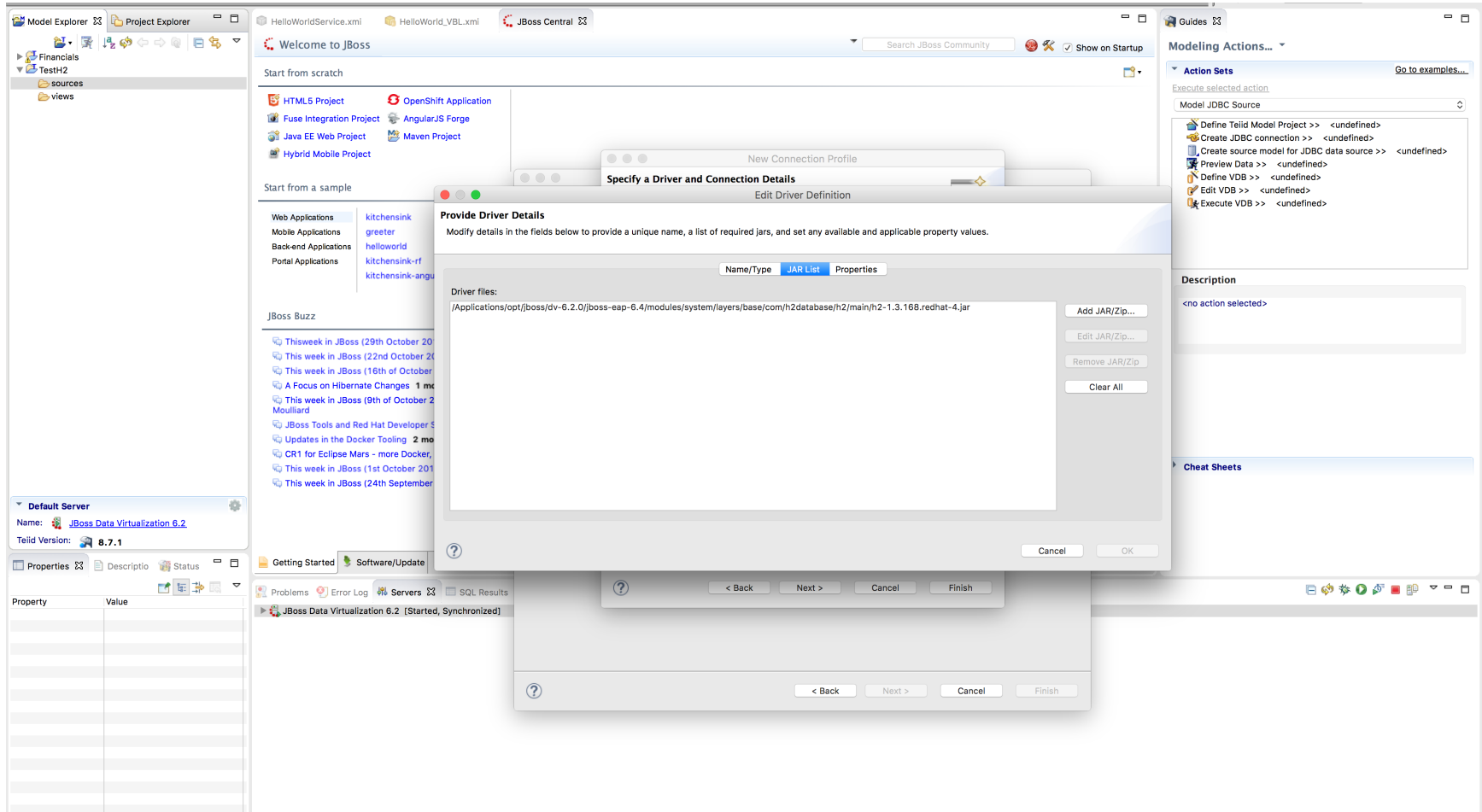
Step 3



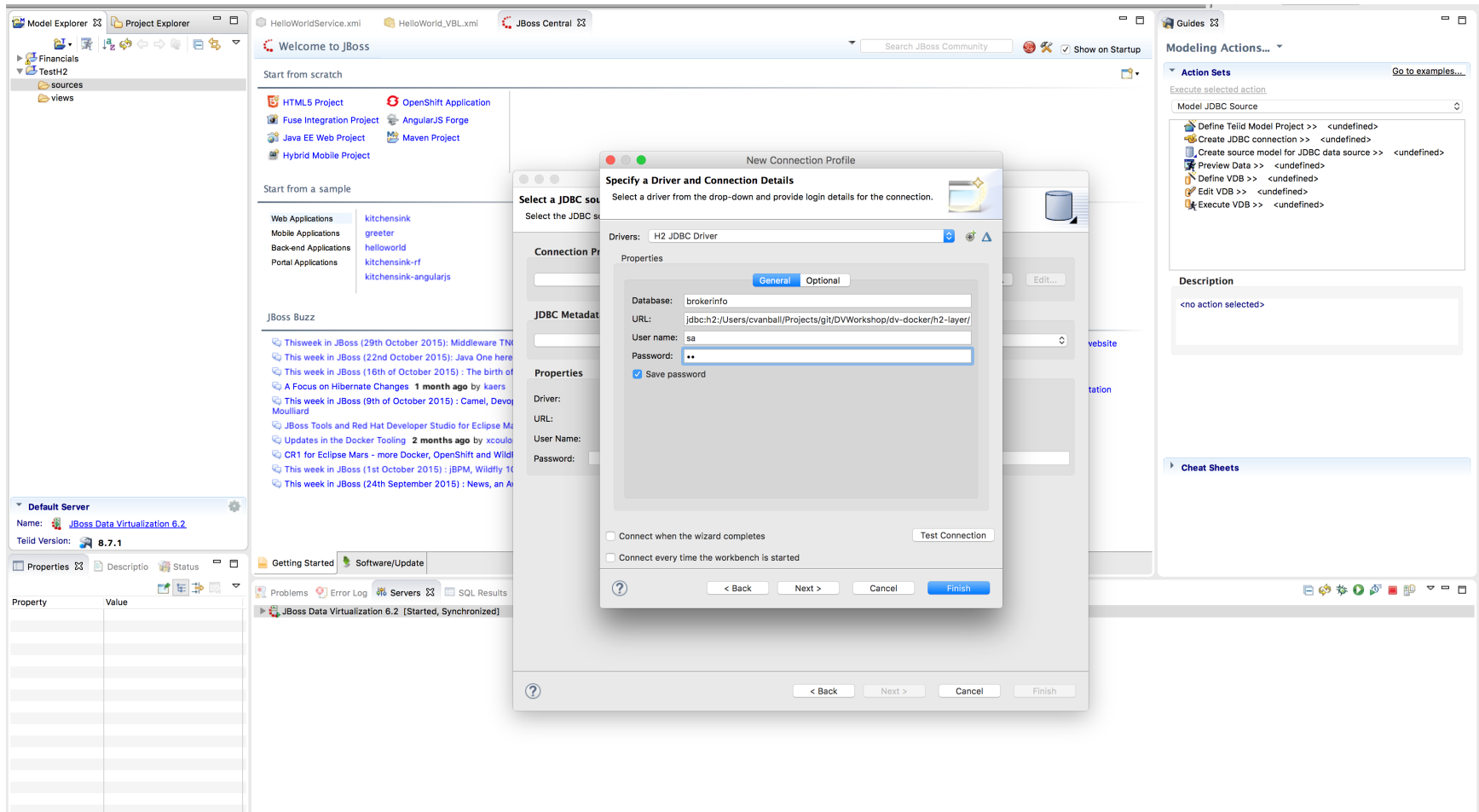
Step 4



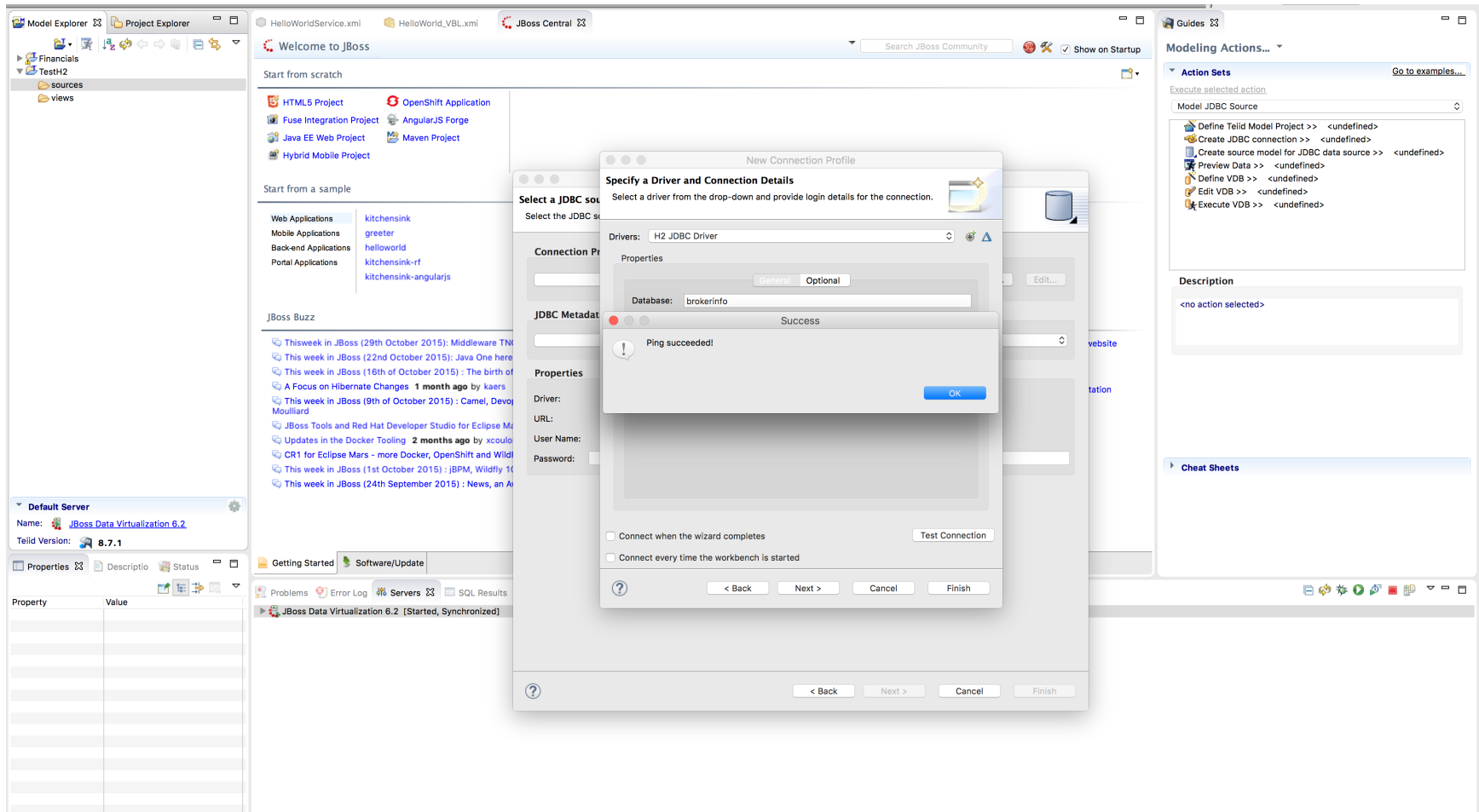
Step 5



Step 6



Step 7



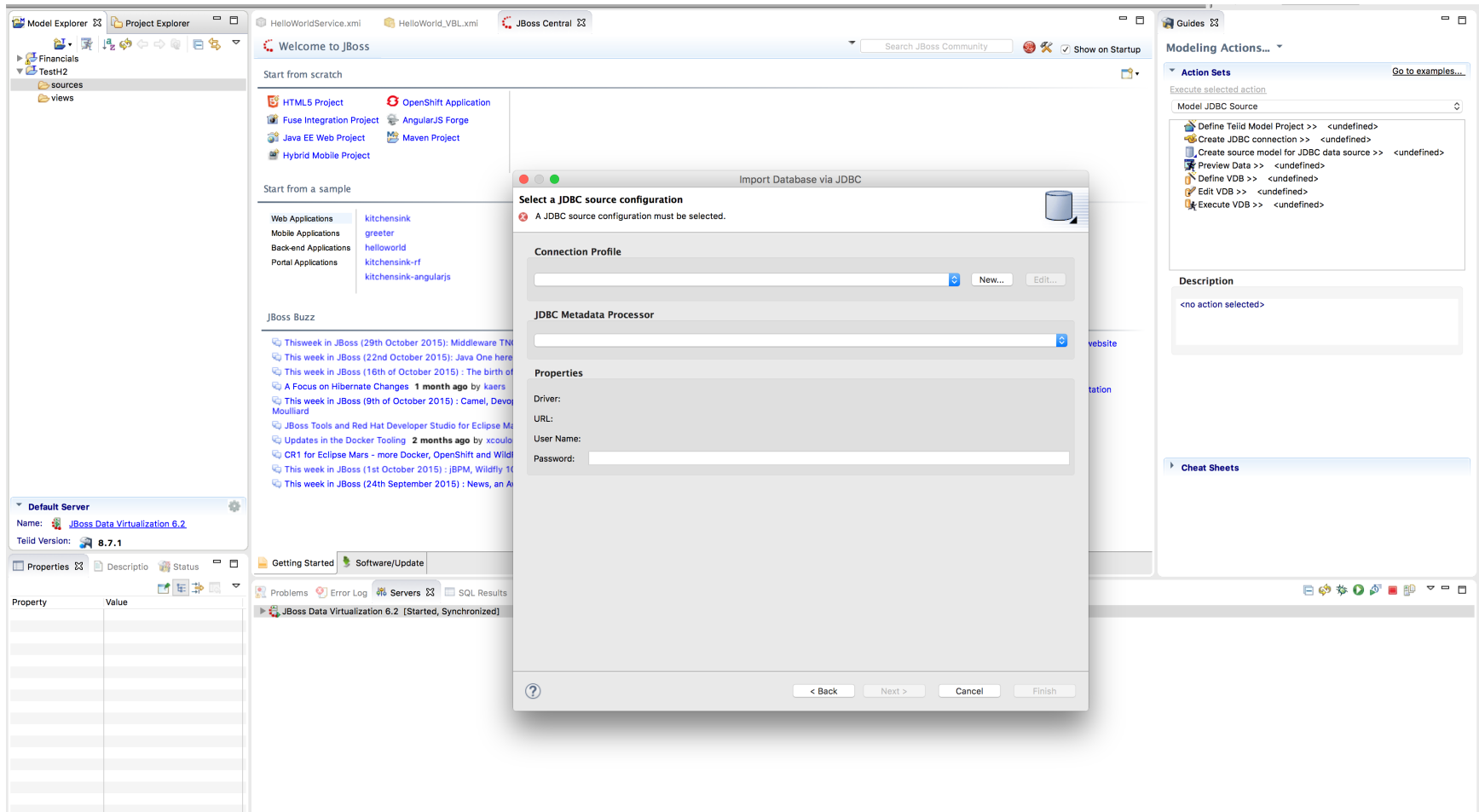
Step 8

The screenshot displays the JBoss Developer Studio interface. A 'New Connection Profile' dialog box is open, showing a summary of the configuration. The dialog has a title bar with standard window controls and a 'Summary' tab. Below the title bar, it says 'Information gathered from previous pages.' A table lists the following properties and values:

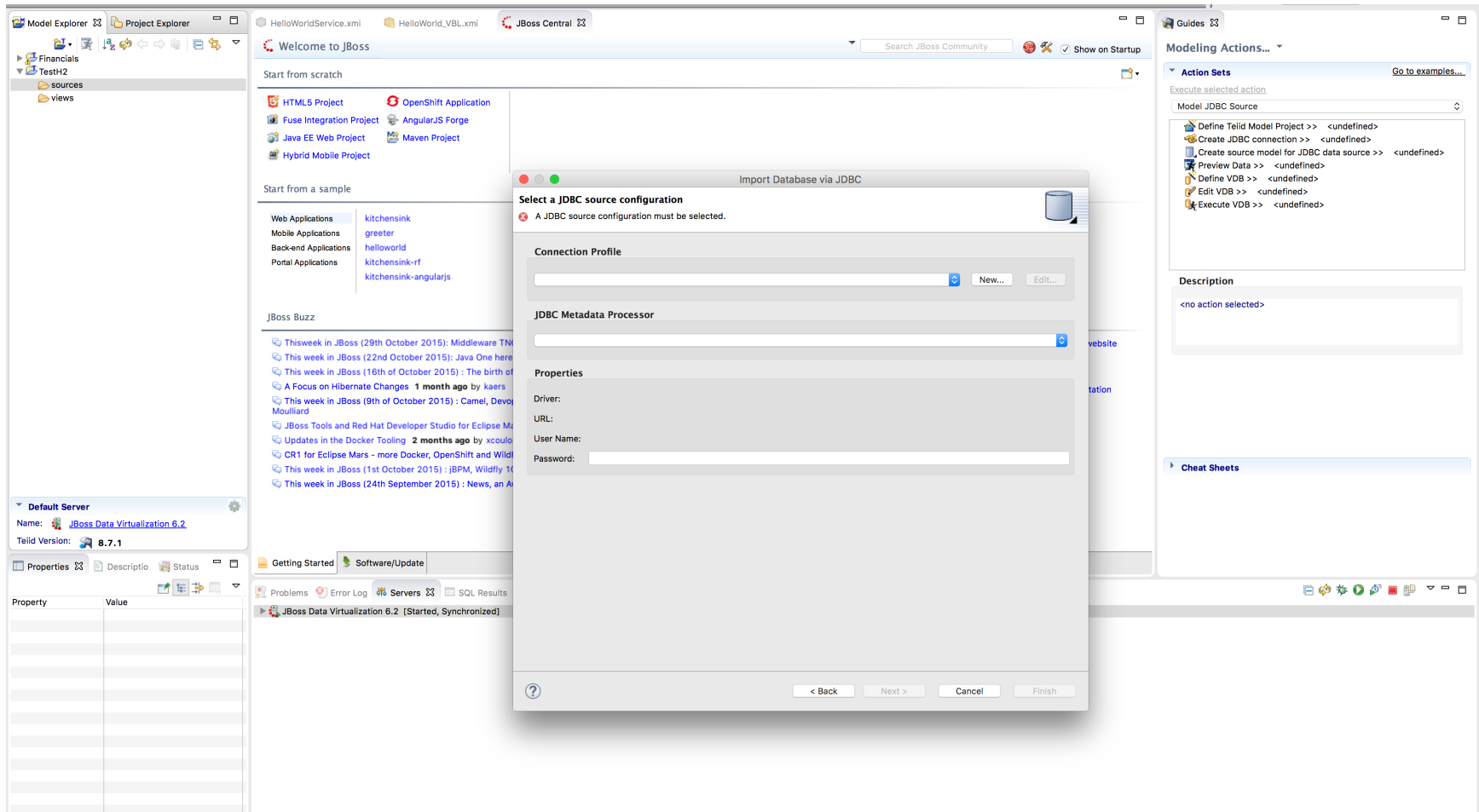
Property	Value
Name	BrokerInfoH2
Description	
Auto connect at startup	false
Auto connect on finish	false
Database	brokerInfo
User name	sa
URL	jdbc:h2:/Users/cvanball/Projects/git/DVWor...
Save Password	true

Below the table, there are sections for 'Properties', 'Driver:', 'URL:', 'User Name:', and 'Password:'. At the bottom of the dialog, there are navigation buttons: '< Back', 'Next >', 'Cancel', and 'Finish'. The background shows the IDE with a 'Welcome to JBoss' page, a 'Model Explorer' on the left, and a 'Modeling Actions...' panel on the right.

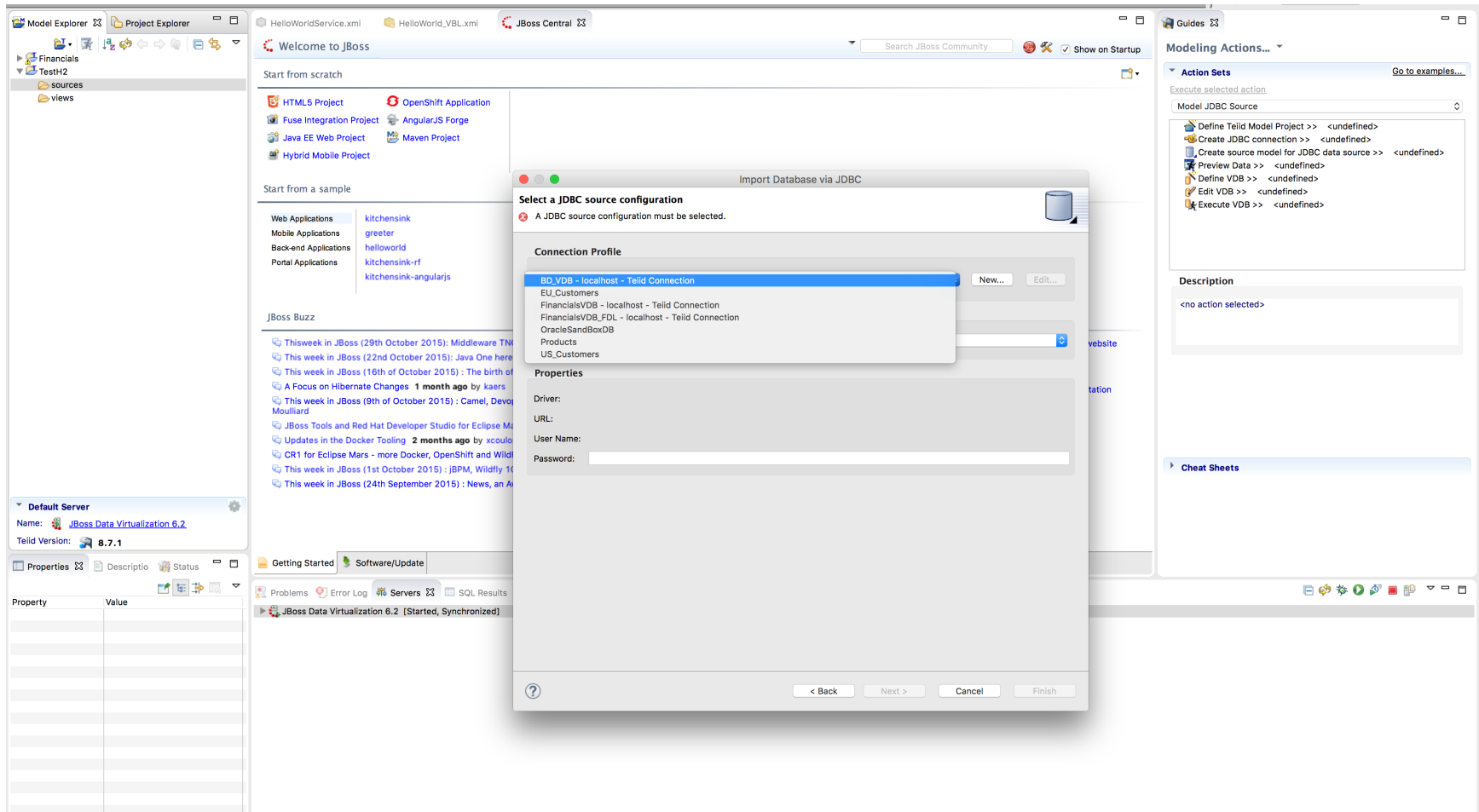
Step 9



Step 10



Step 11



Step 13

- Restart JBDS

Step 14

