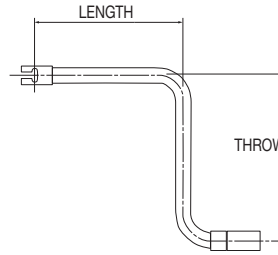
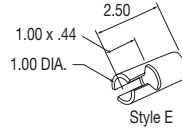


Removable Cranks & Accessories

Features

- Metal handle
- Steel construction
- Black primer finish
- Handle is 3.75" long

Dimension Diagram



Specifications

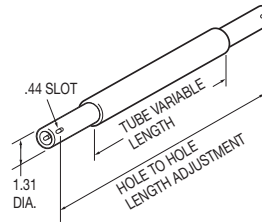
part no.	weight (lbs.)	pop. code	description	length (in.)	throw (in.)	cross reference
013-00496	2.70	C	crank	7.50	13.50	LG0082.01
013-00498	3.10	C	crank	11.50	13.50	LG0082.02
013-00500	3.50	C	crank	16.25	13.50	
013-00501	4.10	C	crank	20.00	13.50	

Adjust-a-Shaft Bulk Kits & Component Parts

Features

- Tubular steel construction
- Black primer finish
- Adjustable to reduce inventory requirements
- Component parts available separately
- Kits consist of two ends to fit over 1.00" shafting, choice of five middle tubes to cover all normal mounting lengths, and hardware

Dimension Diagram



Specifications

part no.	weight (lbs.)	popularity code	description	length adjustment (in.)	cross reference
012-00001	4.26	C	bulk kit	21.00 to 39.00	
012-00002	5.60	C	bulk kit	37.00 to 55.00	04-536-X
012-00003	6.90	A	bulk kit	53.00 to 71.00	04-552X
012-00914	7.90	B	bulk kit	69.00 to 87.00	
012-00915	9.60	C	bulk kit	85.00 to 103.00	
012-00011	1.30	A	end	11.00	
012-00004	1.66	C	tube	20.00	
012-00005	2.80	C	tube	36.00	
012-00006	4.10	C	tube	52.00	
012-00008	5.30	C	tube	68.00	
012-00009	6.97	C	tube	84.00	

Custom One-Piece Braces

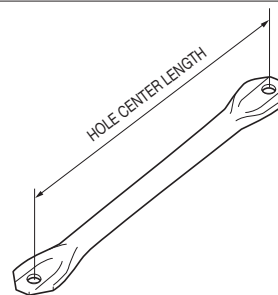
Features

- Black primer finish
- .66" diameter mounting holes

How to Order

- Choose desired pipe or tube size then specify hole center length
- Side loaded ends

Dimension Diagram



Specifications

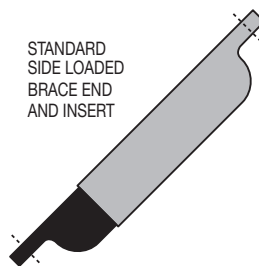
materials (in.)	popularity code	hole center length
1.25 pipe	C	per customer specification
1.50 pipe	C	per customer specification
1.63 tube	C	per customer specification
2.00 pipe	C	per customer specification

Two-Piece Adjust-a-Brace Packaged Sets

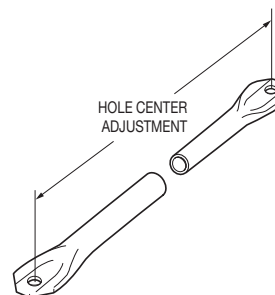
Features

- High strength steel tubing with reinforced end sections for greater tear-out resistance
- Black E-coat finish
- Pkg. set includes one side loaded end and one side loaded insert with 15.00" adjustment
- .66" diameter mounting holes

Installation Diagram



Dimension Diagram



Specifications

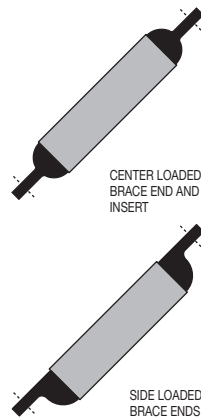
part no.	weight (lbs.)	pop. code	description	hole center adjustment (in.) /component length	brace end O.D. (in.)	insert end O.D. (in.)	brace wall thickness (gauge)	insertwall thickness (gauge)	cross reference
013-00991	6.76	A	heavy-duty pkg. set	26.00 to 41.00	1.88	1.63	14	12	04-40-26-41, 1613
013-00992	8.88	A	heavy-duty pkg. set	42.00 to 57.00	1.88	1.63	14	12	04-40-42-57, 1614
013-00993	10.86	A	heavy-duty pkg. set	58.00 to 72.00	1.88	1.63	14	12	04-40-56-72, 1615
013-00996	12.98	A	heavy-duty pkg. set	73.00 to 88.00	1.88	1.63	14	12	
013-00997	15.10	A	heavy-duty pkg. set	89.00 to 104.00	1.88	1.63	14	12	
013-01601	5.38	A	standard pkg. set	26.00 to 41.00	1.75	1.50	14	14	04-10-26-41
013-01602	7.18	A	standard pkg. set	42.00 to 57.00	1.75	1.50	14	14	04-10-42-57
013-01603	8.96	A	standard pkg. set	58.00 to 72.00	1.75	1.50	14	14	04-10-56-72
013-01655	10.49	A	standard pkg. set	73.00 to 88.00	1.75	1.50	14	14	
013-01656	13.30	A	standard pkg. set	89.00 to 104.00	1.75	1.50	14	14	

LE Three-Piece Adjust-a-Brace Bulk Kits & Component Parts

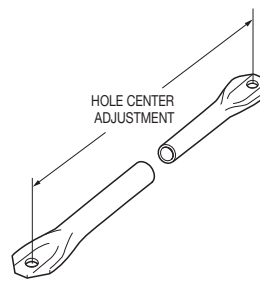
Features

- High strength steel tubing with reinforced end pieces for greater tear-out resistance
- Black primer finish
- .66" diameter mounting holes
- Kits adjustable up to 6.00"
- Available with side loaded or center loaded end pieces
- Component parts also sold separately

Installation Diagram



Dimension Diagram



Specifications

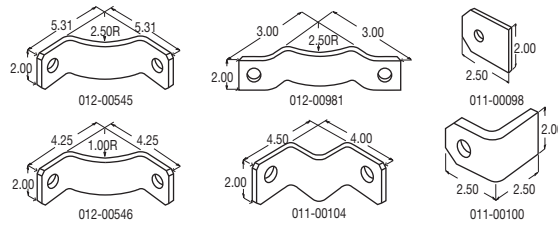
part no.	weight (lbs.)	pop. code	description	hole center adjustment (in.) / component length	end type	tube O.D. (in.)	end O.D. (in.)	tube wall thickness (gauge)	end wall thickness (gauge)
013-01094	4.15	C	bulk kit	18.00 to 24.00	center loaded	1.88	1.63	14	12
013-01095	4.80	C	bulk kit	24.00 to 30.00	center loaded	1.88	1.63	14	12
013-01096	5.60	C	bulk kit	30.00 to 36.00	center loaded	1.88	1.63	14	12
013-01097	6.60	C	bulk kit	36.00 to 42.00	center loaded	1.88	1.63	14	12
013-01098	7.00	C	bulk kit	42.00 to 48.00	center loaded	1.88	1.63	14	12
013-01099	7.70	C	bulk kit	48.00 to 54.00	center loaded	1.88	1.63	14	12
013-01100	8.50	C	bulk kit	54.00 to 60.00	center loaded	1.88	1.63	14	12
013-01101	9.10	C	bulk kit	60.00 to 66.00	center loaded	1.88	1.63	14	12
013-01102	9.95	C	bulk kit	66.00 to 72.00	center loaded	1.88	1.63	14	12
012-00418	1.40	C	end	9.00	center loaded	-	1.63	-	12
012-00476	1.40	C	end	9.00	side loaded	-	1.63	-	12
012-00352	1.35	C	tube	10.00	-	1.88	14	-	-
012-00353	2.00	C	tube	16.00	-	1.88	14	-	-
012-00354	2.80	C	tube	22.00	-	1.88	14	-	-
012-00355	3.80	C	tube	28.00	-	1.88	14	-	-
012-00356	4.20	C	tube	34.00	-	1.88	14	-	-
012-00357	4.90	C	tube	40.00	-	1.88	14	-	-
012-00358	5.70	C	tube	46.00	-	1.88	14	-	-
012-00359	6.30	C	tube	52.00	-	1.88	14	-	-
012-00360	7.14	C	tube	58.00	-	1.88	14	-	-

Brace Lugs

Features

- .38" thick steel construction
- Black primer finish
- .66" diameter mounting holes

Dimension Diagram



Specifications

part no.	weight (lbs.)	popularity code	cross reference
011-00098	.50	C	02-10-A, 1364
011-00100	.80	B	02-13-A
011-00104	1.30	A	1306
012-00545	1.60	A	Holland BL-4 and Austin J-4154
012-00546	1.40	C	Holland BL-11
012-00981	2.30	B	1382, 1381

