



# Welcome to OOo-dev

Create a new document



Text Document



Spreadsheet



Presentation



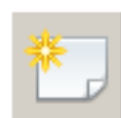
Drawing



Database



Formula



Templates...

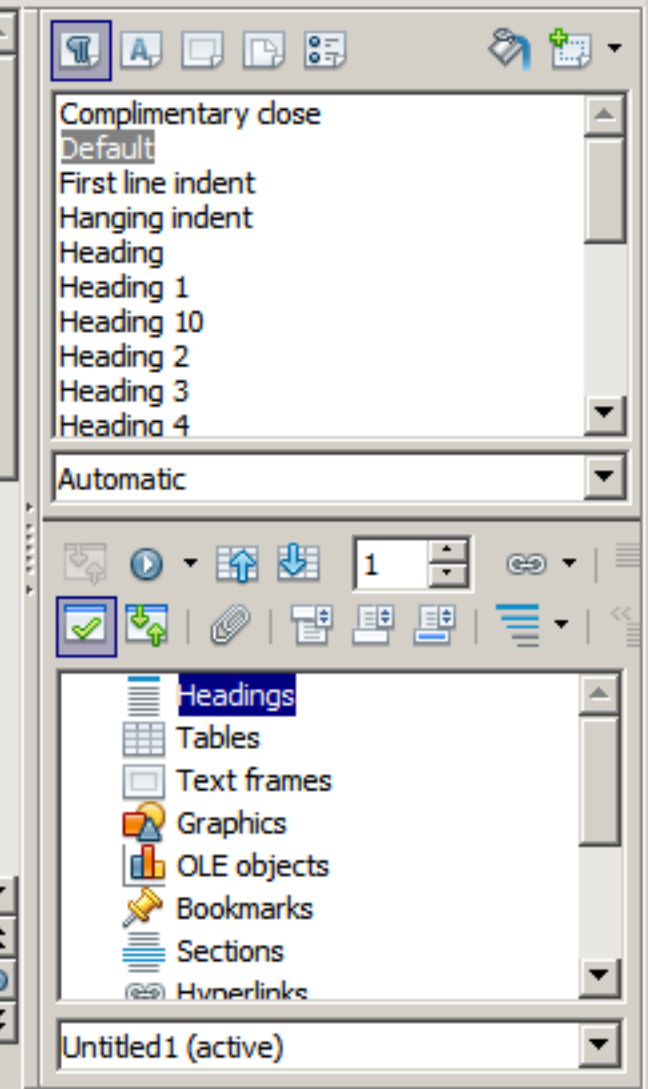
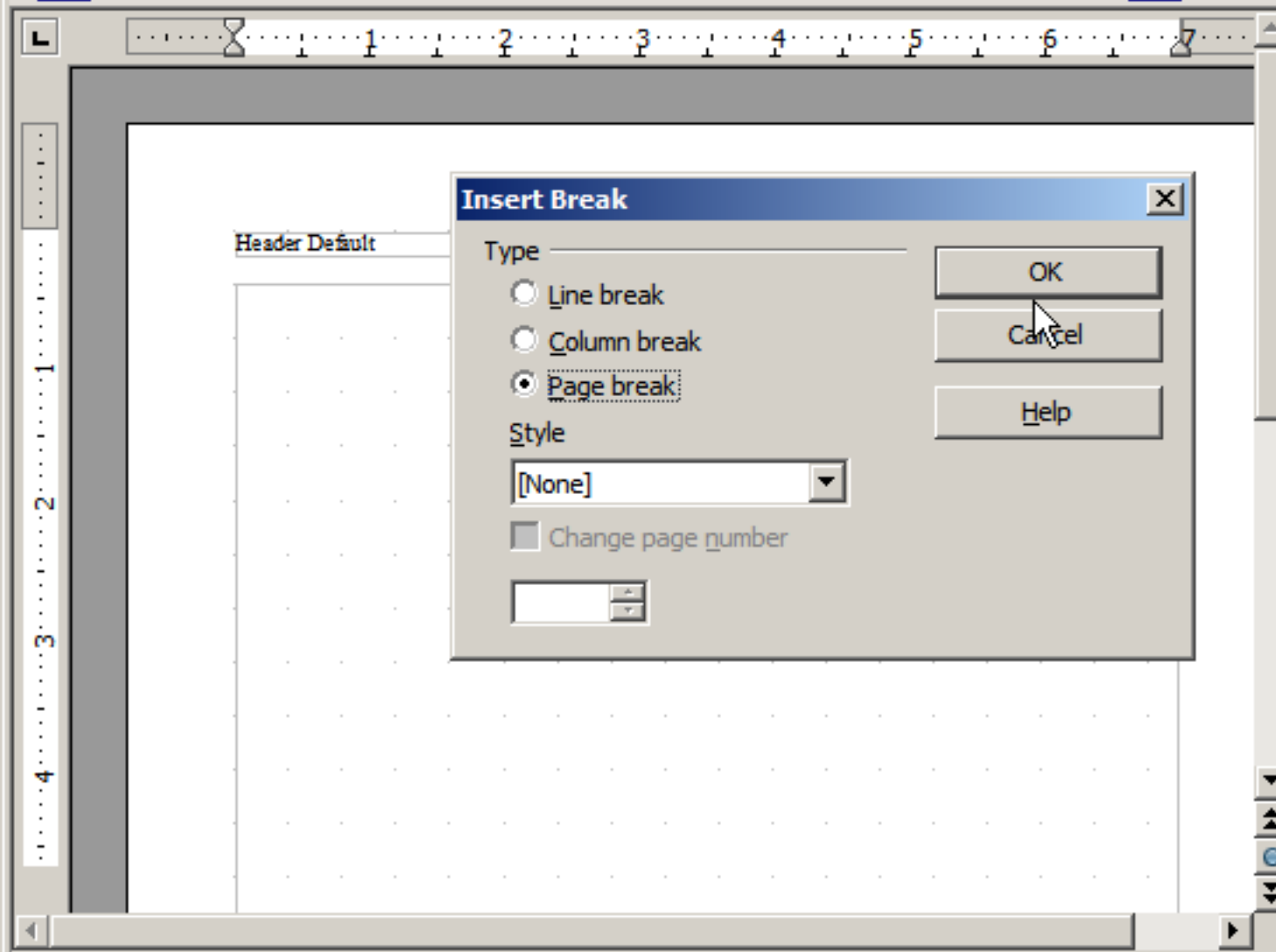


Open a document...

Click an icon to open a new document, to open a file dialog, or to browse to a featured web page.







Default Times New Roman 12 B I U

Header Default Page 1 / 2

Complimentary close  
Default  
First line indent  
Hanging indent  
Heading  
Heading 1  
Heading 10  
Heading 2  
Heading 3  
Heading 4  
Automatic

1

Headings  
Tables  
Text frames  
Graphics  
OLE objects  
Bookmarks  
Sections  
Hyperlinks

Untitled1 (active)




Default Times New Roman 12 **B** *I* U

Header Default

1 2 3 4 5 6 7

1 2 3 4

I

Complimentary close

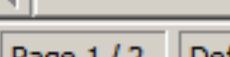
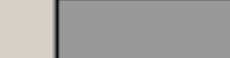
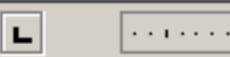
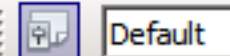
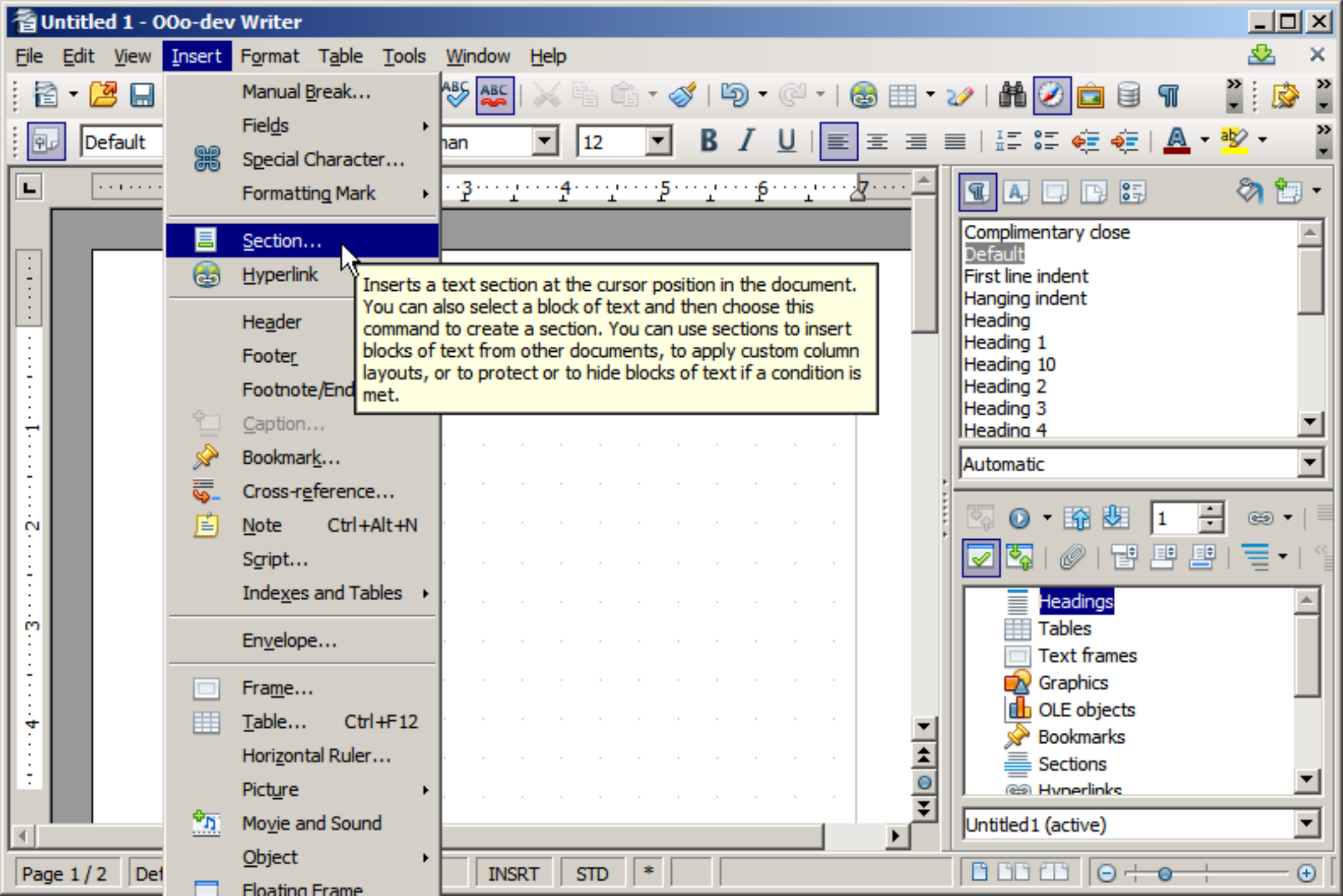
- Default
- First line indent
- Hanging indent
- Heading
- Heading 1
- Heading 10
- Heading 2
- Heading 3
- Heading 4

Automatic

1

- Headings
- Tables
- Text frames
- Graphics
- OLE objects
- Bookmarks
- Sections
- Hyperlinks

Untitled1 (active)



- Manual Break...
- Fields
- Special Character...
- Formatting Mark
- Section...**
- Hyperlink
- Header
- Footer
- Footnote/End
- Caption...
- Bookmark...
- Cross-reference...
- Note Ctrl+Alt+N
- Script...
- Indexes and Tables
- Envelope...
- Frame...
- Table... Ctrl+F12
- Horizontal Ruler...
- Picture
- Movie and Sound
- Object
- Floating Frame

Inserts a text section at the cursor position in the document. You can also select a block of text and then choose this command to create a section. You can use sections to insert blocks of text from other documents, to apply custom column layouts, or to protect or to hide blocks of text if a condition is met.

Complimentary close

- Default
- First line indent
- Hanging indent
- Heading
- Heading 1
- Heading 10
- Heading 2
- Heading 3
- Heading 4

Automatic

1

- Headings**
- Tables
- Text frames
- Graphics
- OLE objects
- Bookmarks
- Sections
- Hyperlinks

Untitled1 (active)

### Insert Section

Section Columns Indents Background Footnotes/Endnotes

New section: Section1

Link:  Link  DDE

File name: [text box] ...

Section: [dropdown]

Write protection:  Protect  With password ...

Hide:  Hide

With Condition: [text box]

Properties:  Editable in read-only document

Buttons: Insert Cancel Help Reset

plementary close

line indent

ng indent

ng

ng 1

ng 10

ng 2

ng 3

na 4

matic

1

Headings

Tables

Text frames

Graphics

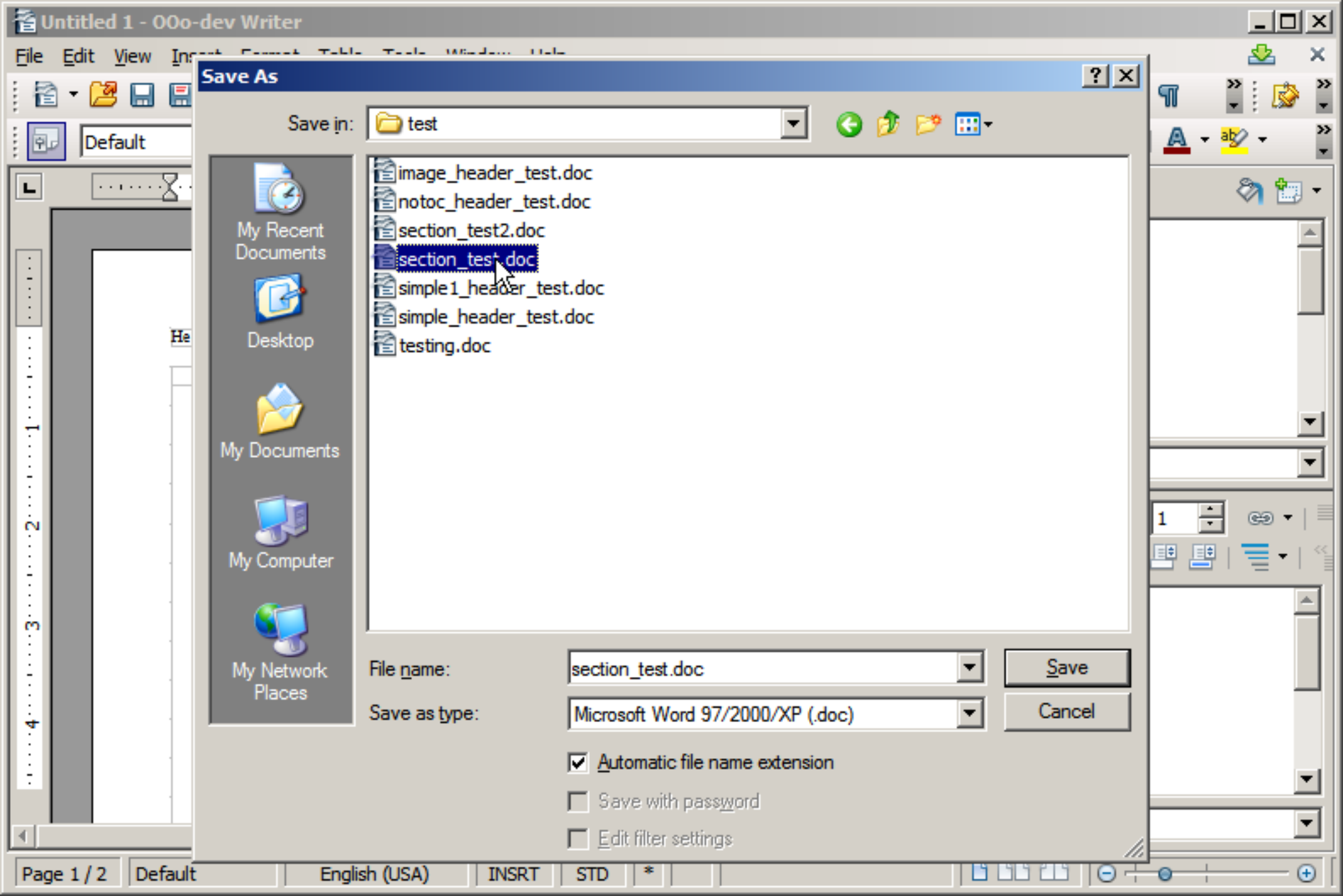
OLE objects

Bookmarks

Sections

Hyperlinks





Save As

Save in: test

- My Recent Documents
- Desktop
- My Documents
- My Computer
- My Network Places

- image\_header\_test.doc
- notoc\_header\_test.doc
- section\_test2.doc
- section\_test.doc
- simple1\_header\_test.doc
- simple\_header\_test.doc
- testing.doc

File name: section\_test.doc

Save as type: Microsoft Word 97/2000/XP (.doc)

Save

Cancel

- Automatic file name extension
- Save with password
- Edit filter settings

Default Times New Roman 12 **B** *I* U

Header Default

1 2 3 4 5 6 7

1 2 3 4

Complimentary close

- Default
- First line indent
- Hanging indent
- Heading
- Heading 1
- Heading 10
- Heading 2
- Heading 3
- Heading 4

Automatic

1

- Headings
- Tables
- Text frames
- Graphics
- OLE objects
- Bookmarks
- Sections
- Section 1

section\_test (active)

Default Times New Roman 12 B I U

1 2 3 4 5 6 7

Page 1 / 2

Header Default

Complimentary close  
Default  
First line indent  
Hanging indent  
Heading  
Heading 1  
Heading 10  
Heading 2  
Heading 3  
Heading 4

Automatic

1

Headings  
Tables  
Text frames  
Graphics  
OLE objects  
Bookmarks  
Sections  
Section 1

section\_test (active)



# Welcome to OOo-dev

Create a new document



Text Document



Spreadsheet



Presentation



Drawing



Database



Formula



Templates...



Open a document...

# Open

Look in: test

- My Recent Documents
- Desktop
- My Documents
- My Computer
- My Network Places

- image\_header\_test.doc
- notoc\_header\_test.doc
- section\_test2.doc
- section\_test.doc**
- simple1\_header\_test.doc
- simple\_header\_test.doc
- testing.doc

File name: section\_test.doc

Open

Files of type: All files (\*.\*)

Cancel

Version:

Read-only



