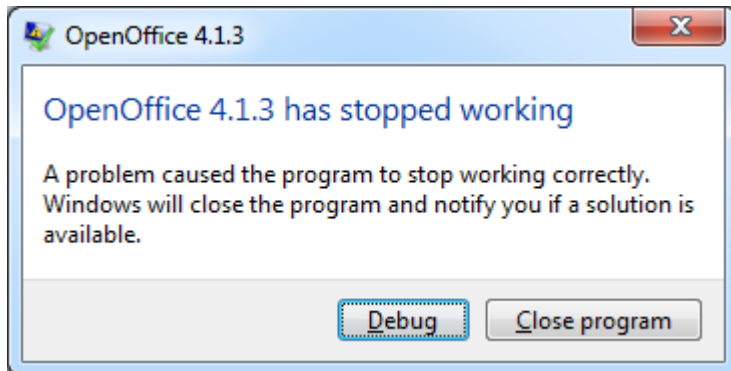
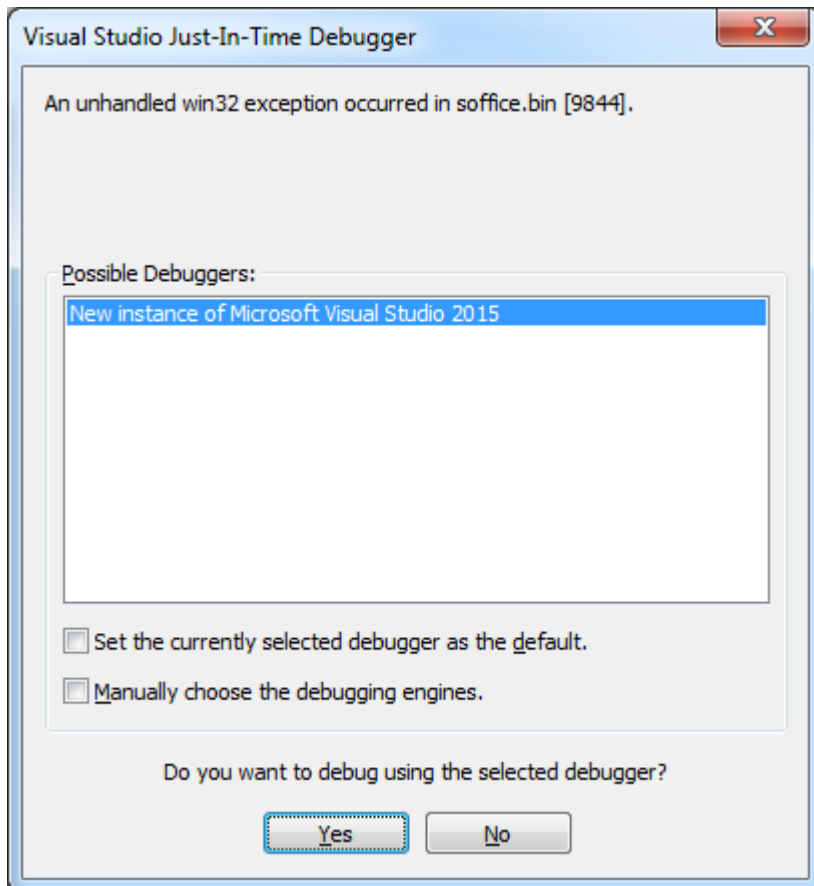


Envelope Addressee Error

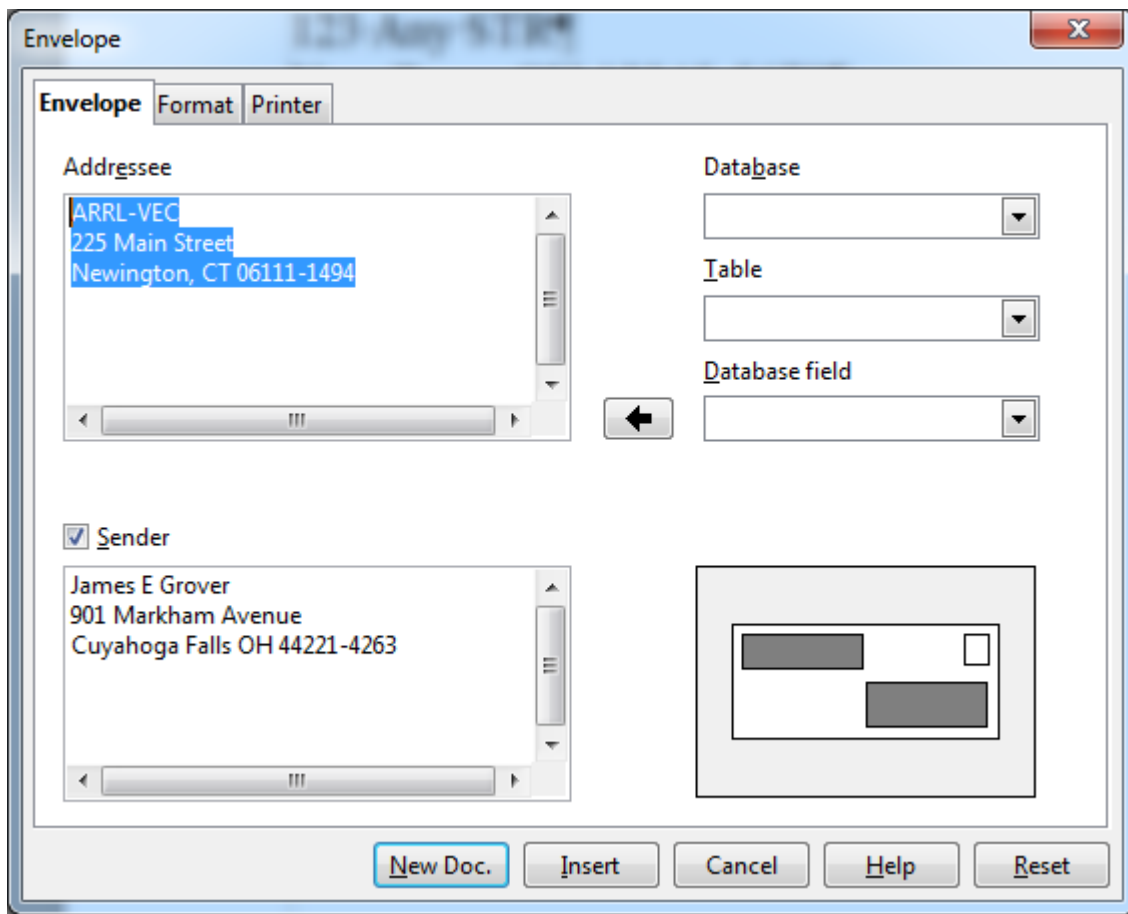
Attempting to delete multiple line of addressee in textbox of Envelope window causes Writer to crash. Attempting to do a select and paste also causes the same problem. See figure below for crash message:



By selecting debug instead of close program yields the following Visual Studio JIT Debugger message. See figure below.



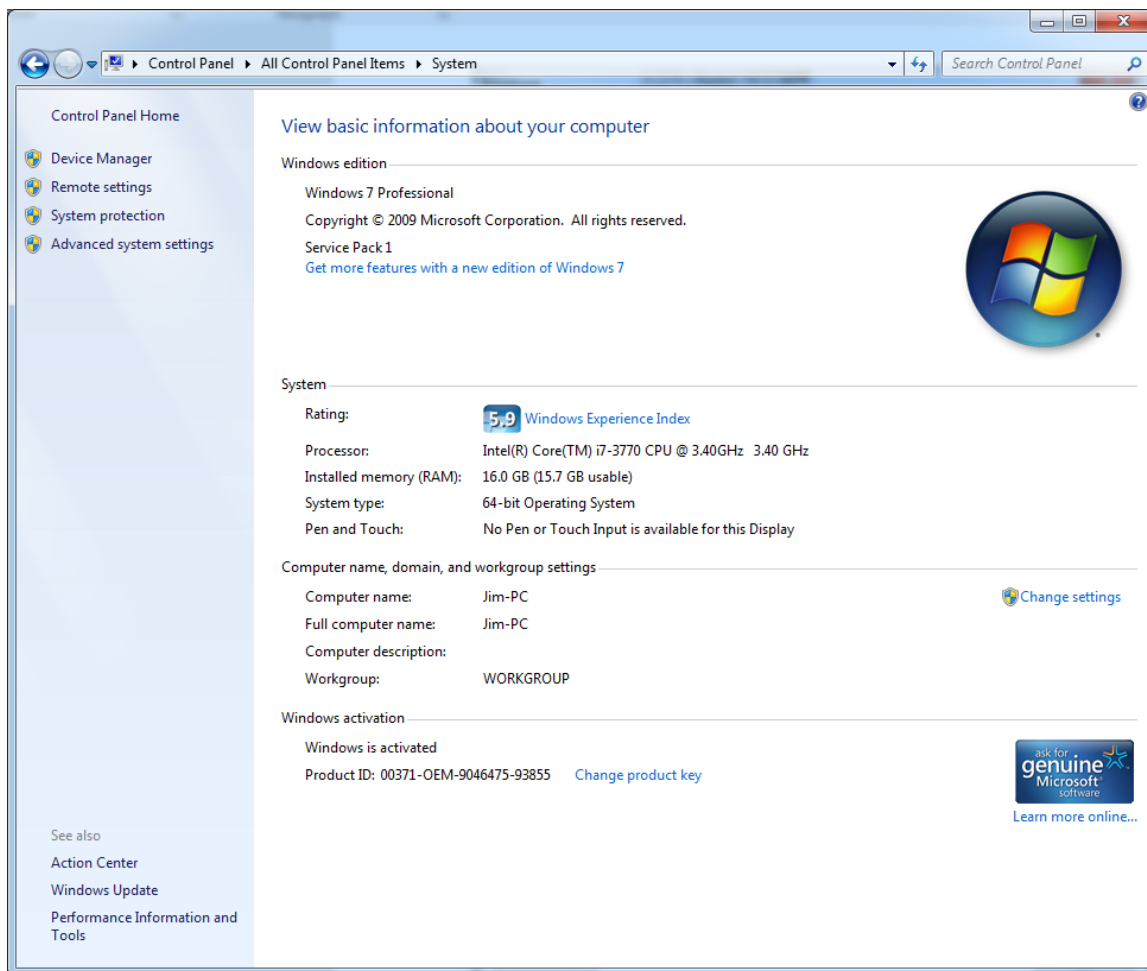
By selecting all within Addressee textbox of Envelope window and tab and then trying to delete or paste causes Write to crash. See example of a select in figure below.



The figure below shows the version and build number that has problem. Actually this problem has existed for several releases of Write back at least to 3.x.x.



I am currently running Windows 7 Professional as shown in the figure below:



Work around is to carefully delete each line in addressee character by character in given line. Then retype new address on that line. Repeat for name, street address and city and state with zip.